

# SoLID PVDIS picture WIREFRAME style

Lorenzo Zana, Syracuse University

August 31, 2012

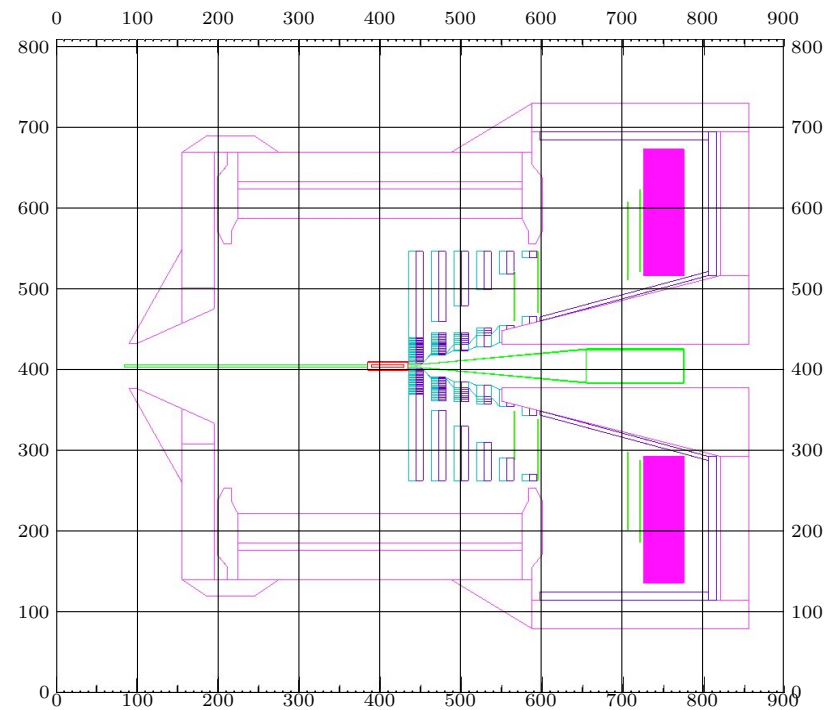
## 1 Using Latex and Overpic

One can use the overpic ( a package in latex: more info [here](#) ) in order to create a grid and insert text or pictures in the wireframe picture of SoLID previously create.

- One can then set up the scale with the picture that utilize the ruler as one of the visible volumes (picture on page 2). A slightly scale difference whenever OpenGL draws a circular shape, is expected, because OpenGL approximates the circular shape with a polygon ([here](#)).
- With the scale fixed one can then (as preference) omit the ruler volume and insert just the grid ([here](#)).
- ... then one can get fancy... ([here](#)).

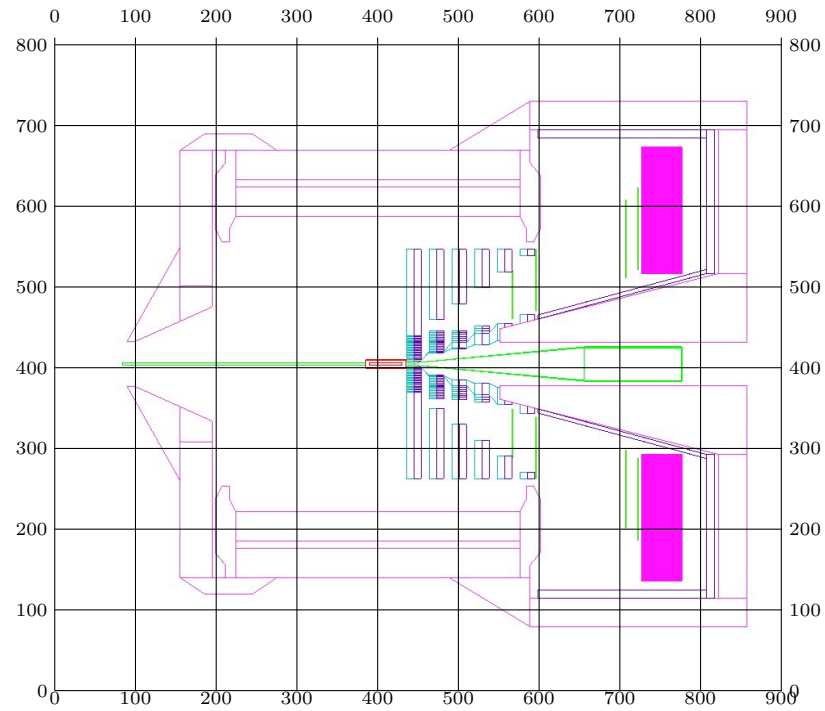
It is important in the overpic definition to keep ratio  $\frac{scale}{unit} = 3.7437$  in order to have the correct scaling of the grid (with my gcard and macro).

```
\begin{overpic}[scale=.4,grid,tics=100,unit=0.1068mm]  
{solid_PVDIS_G4ruler.jpeg}  
\end{overpic}
```



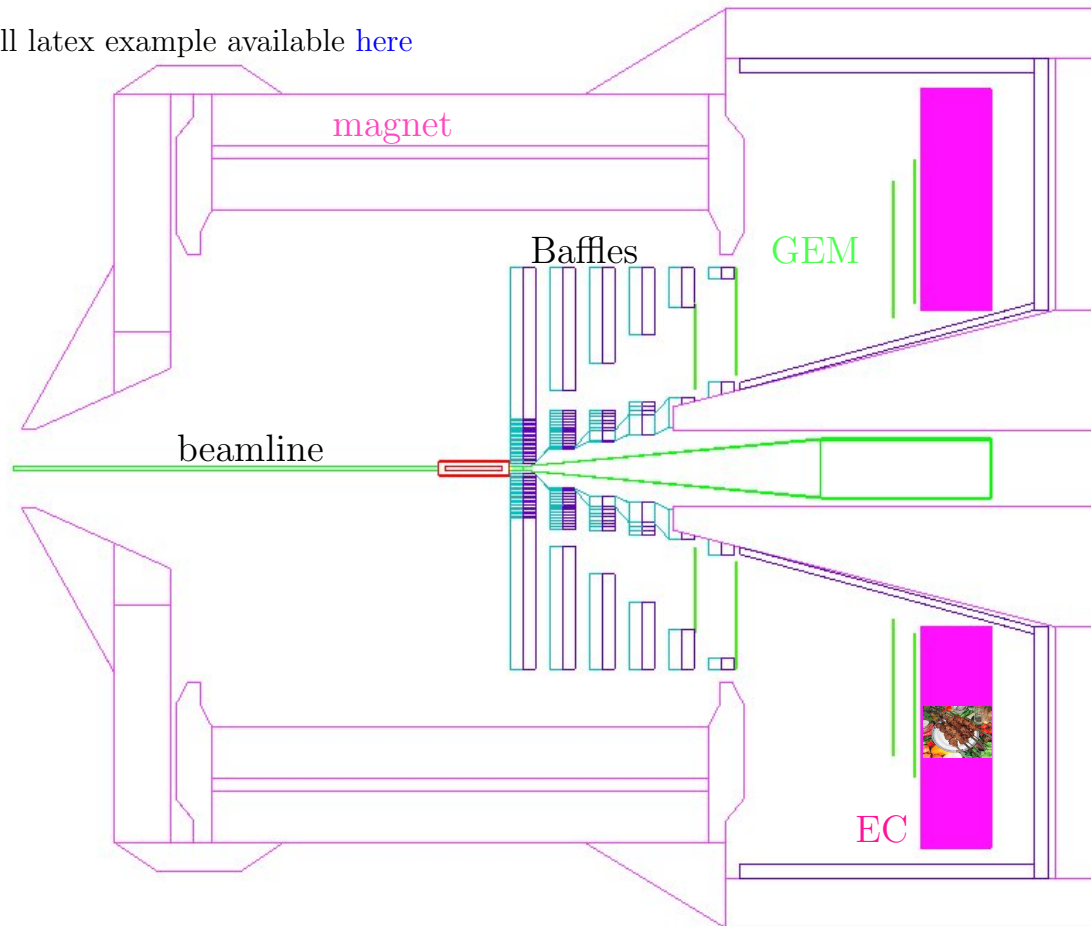
Then one can use the picture without the ruler volume.

```
\begin{overpic}[scale=.4,grid,tics=100,unit=0.1068mm]  
{solid_PVDIS_G4noruler.jpeg}  
\end{overpic}
```



Then one can incorporate links, text, pictures, etc. in the picture.

Full latex example available [here](#)



Back to picture with the grid