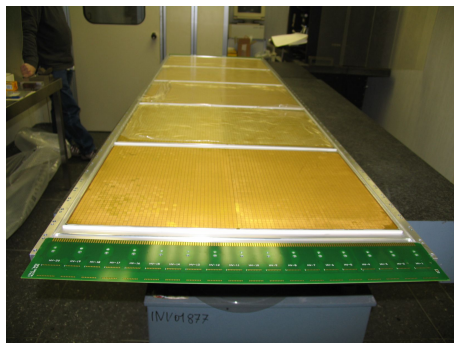


RICH Upgrade Status / 17 March 2008

- New RICH frames delivered end of February
- Work in progress:
 - ▶ Wire stretching
 - ▶ Gas tubes installation (test gas tight)
 - ▶ External mechanical frame for support
 - ▶ RICH handling stand
 - ▶ Front End electronics (old/new) mechanical support



Installation Plan and JLab resources

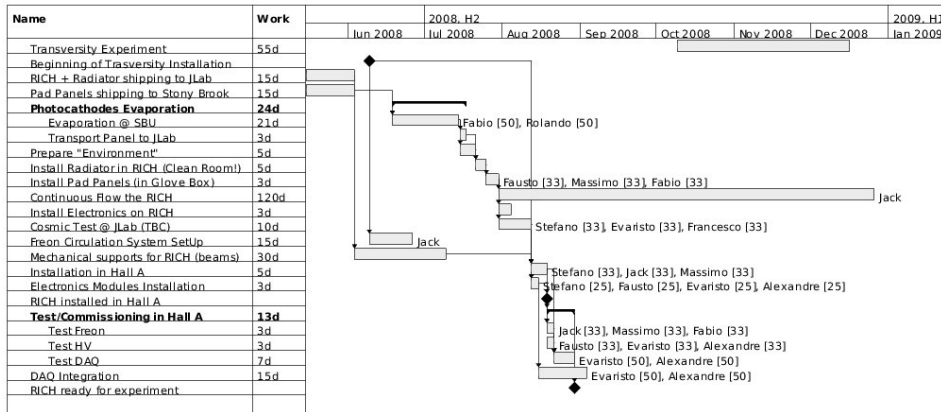
Preliminary plan

- Rome (before mid May): Deliver the pad panels to Stony Brook
- Rome (before mid May): Deliver the RICH to JLab
- SB (mid June): Evaporate the Csl on pad panels
- SB-JLab: Transport the evaporated pad panels to JLab
- JLab (mid July): Install the radiator on the RICH (clean room!)
- JLab: Install the evaporated pad panels (glove box!)
- JLab: Cosmic Ray test
- JLab (after mid August): Install in HRS
- JLab: Install Front-end electronics

JLab resources

- Clean Room (approx. 1 week)
- Glove Box and some space around + crane (1 month at least)
- Mechanics beams (possibly reuse existing ones)
- Freon Circulation system
- Gases: Nitrogen (Argon, CO₂), and CH₄
- Support for logistic

Detailed - preliminary - Installation plan



- Evaporation + Installation expected to take ~ 2 months
- Reasonable start time: mid of June