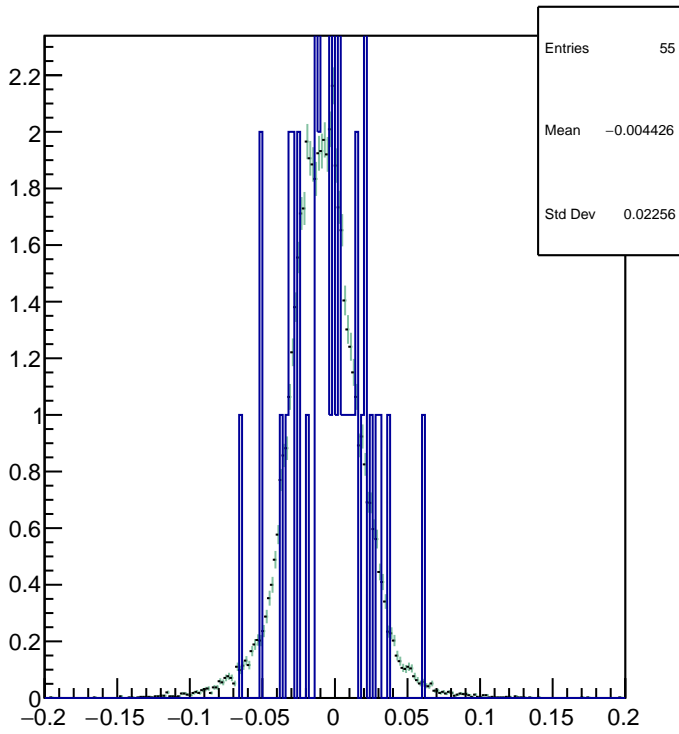


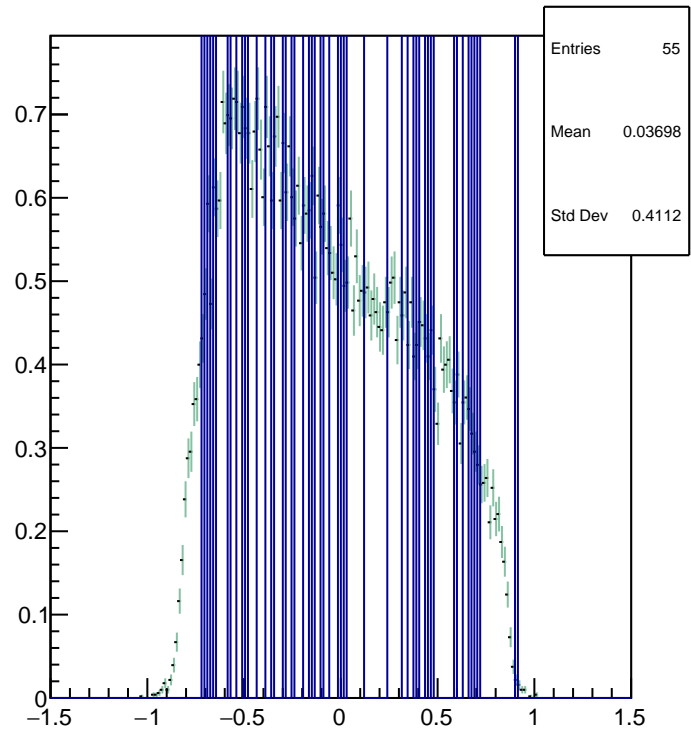
Run #111843

FP Variables (Detector Coord.)

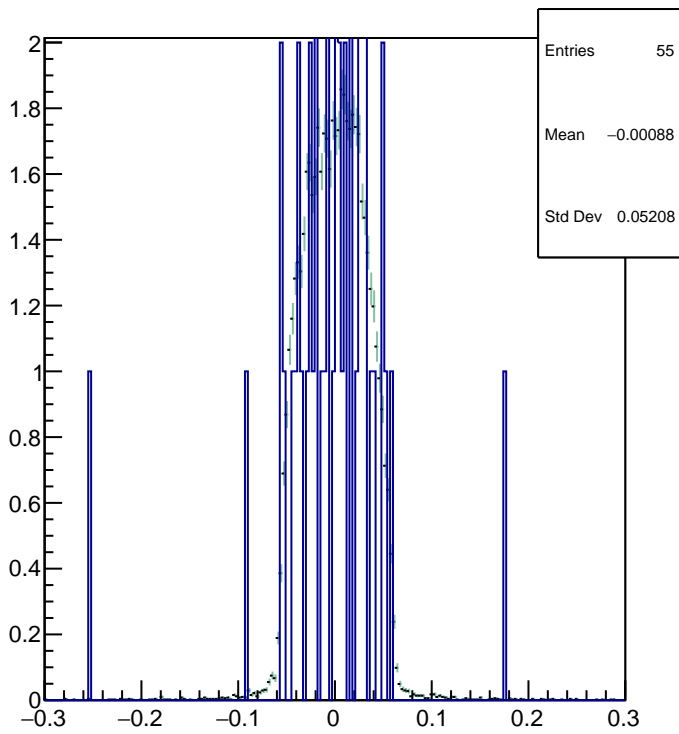
R-arm FP Detector y



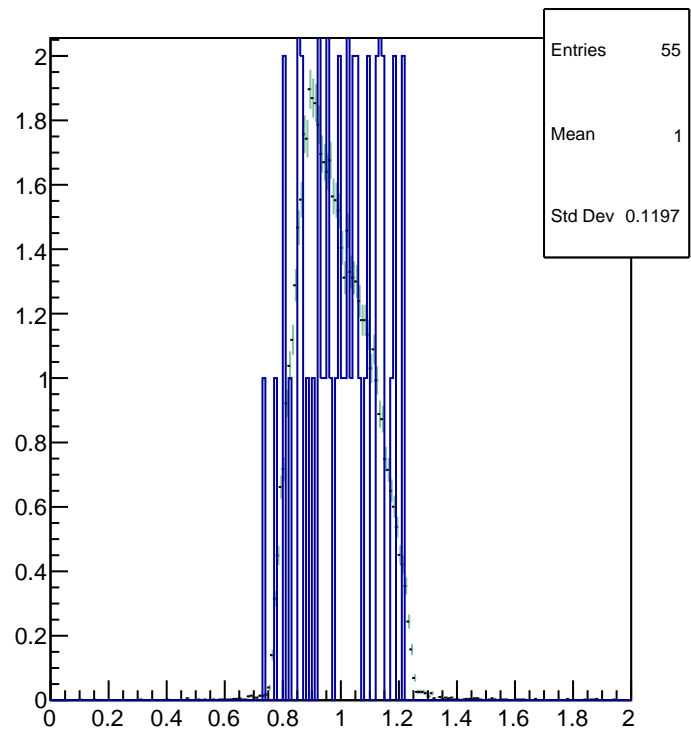
R-arm FP Detector x



R-arm FP Detector phi

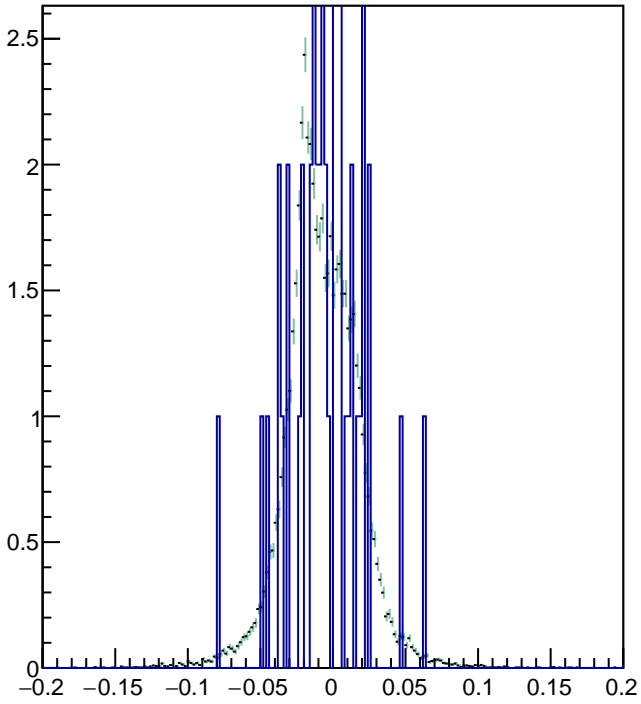


R-arm FP Detector theta

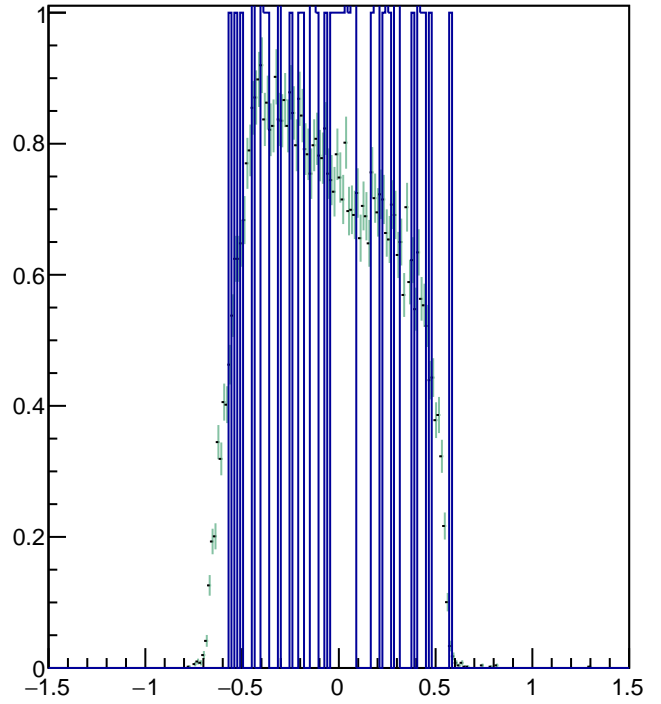


FP Variables (Transport Coord.)

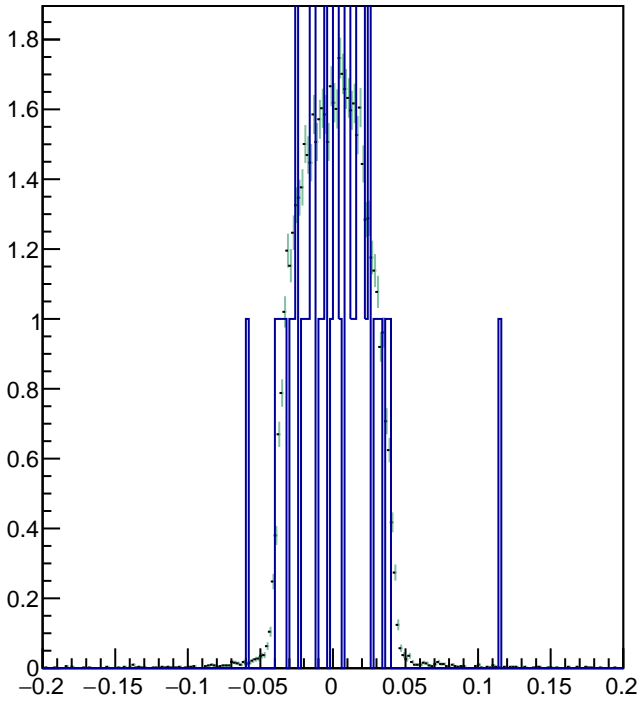
R-arm FP Transport y



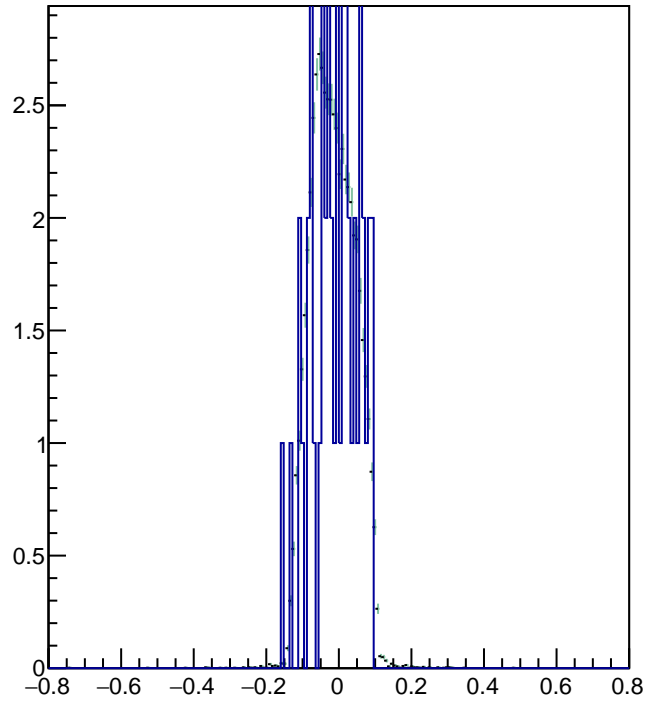
R-arm FP Transport x



R-arm FP Transport phi

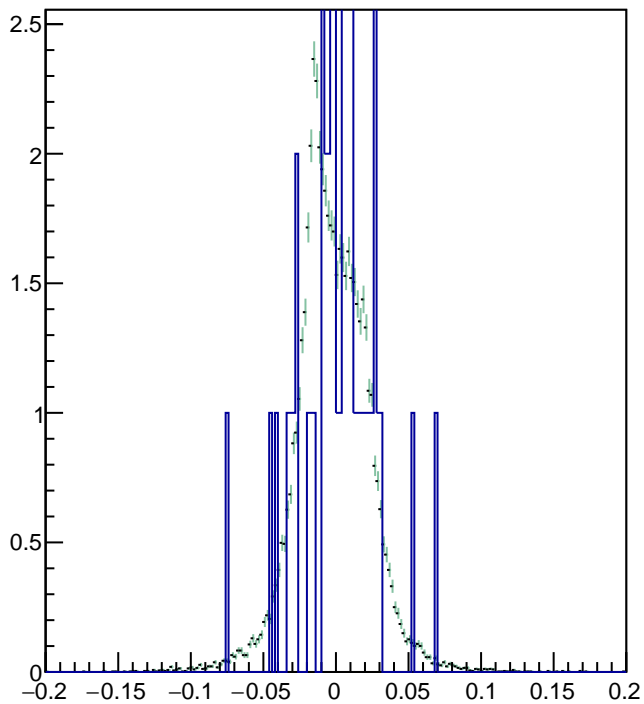


R-arm FP Transport theta

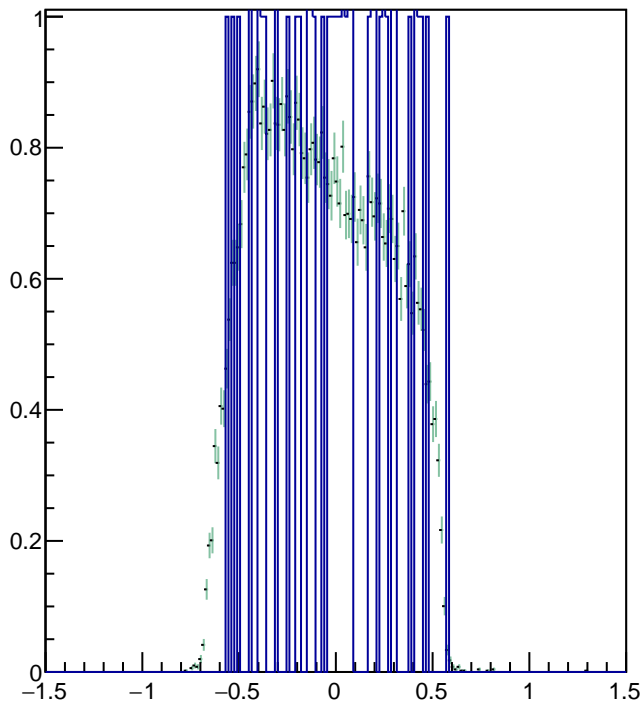


FP Variables (Rotated Coord.)

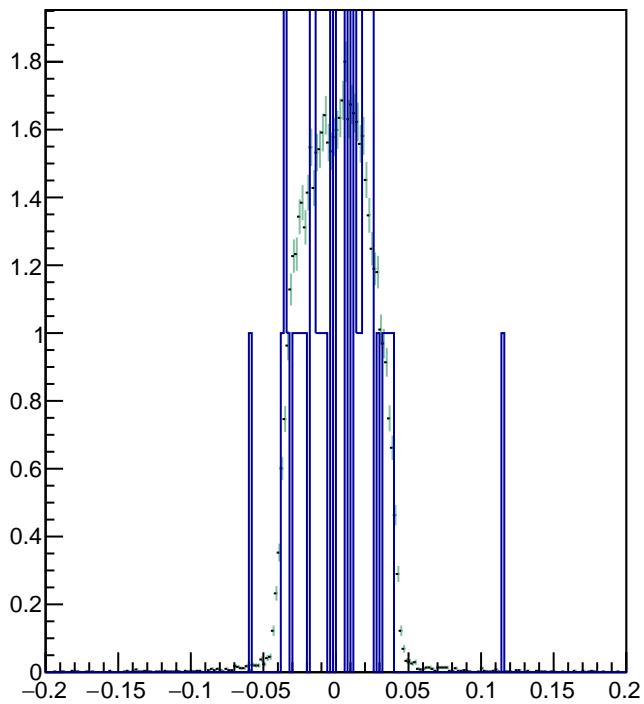
R-arm FP Rotated y



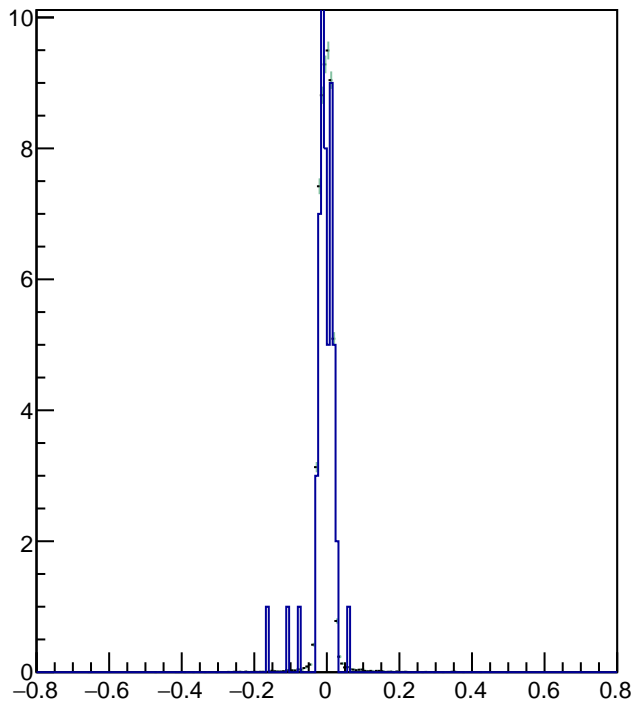
R-arm FP Rotated x



R-arm FP Rotated phi

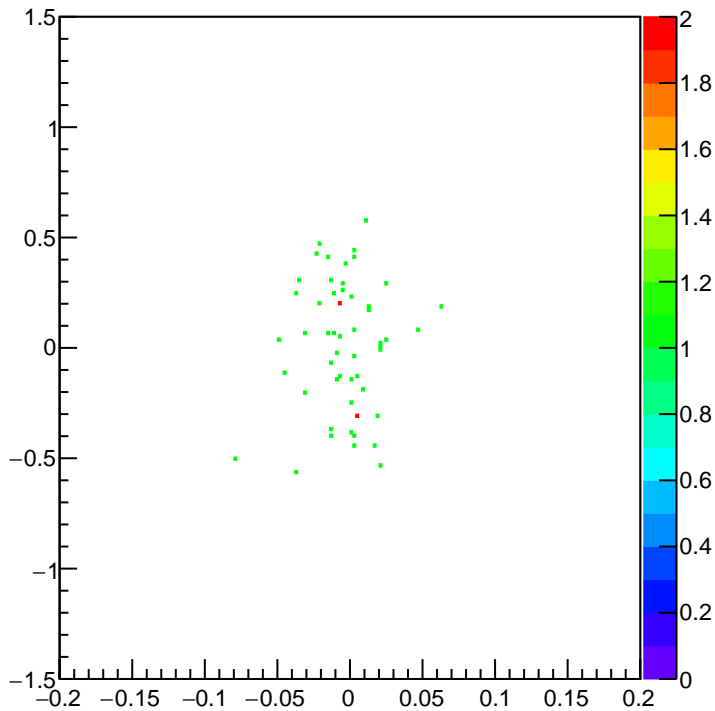


R-arm FP Rotated theta

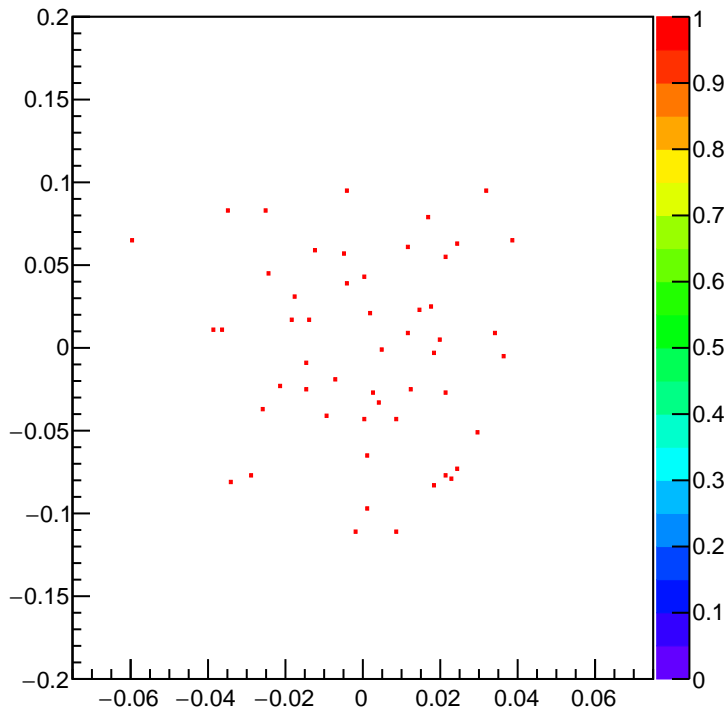


FP Variables (2-d)

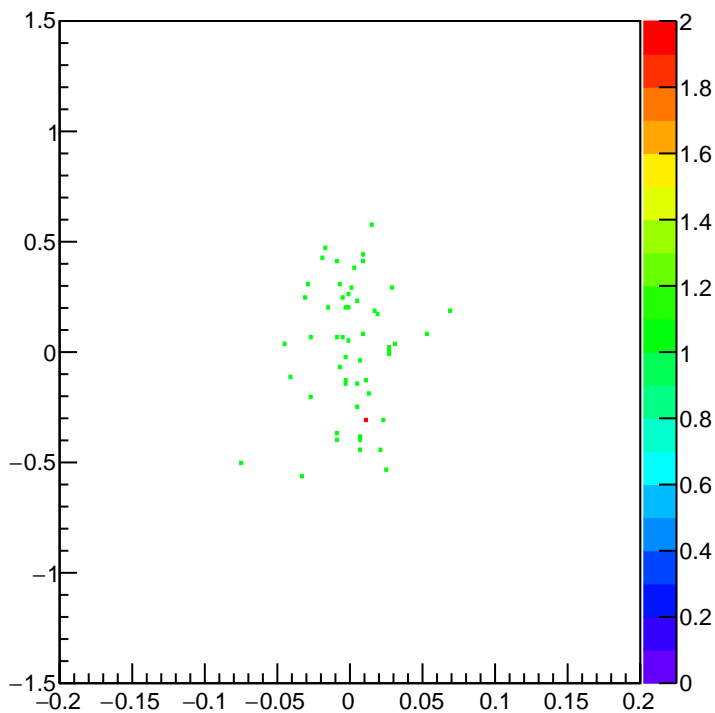
R-arm FP Transport x vs. y



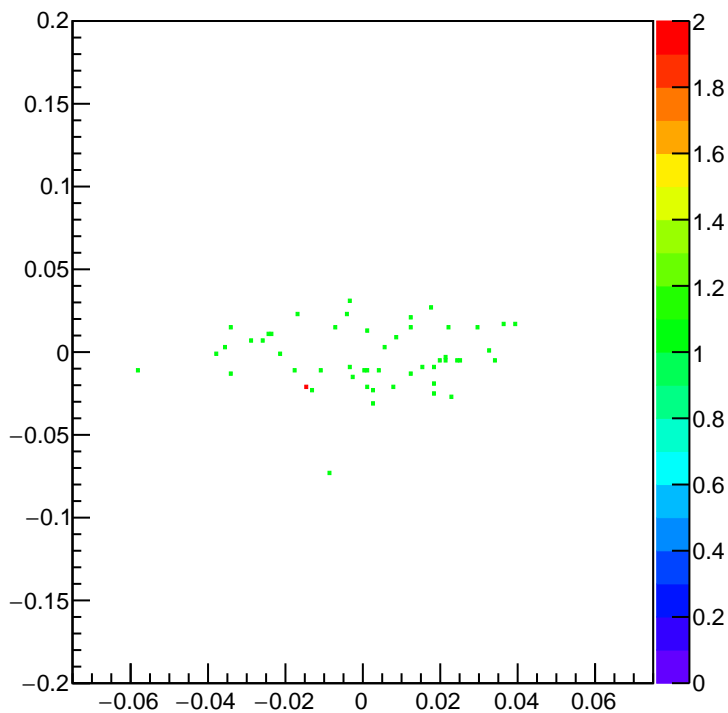
R-arm FP Transport theta vs. phi

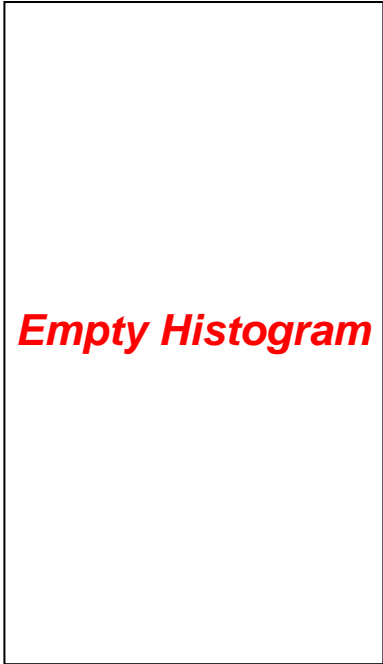
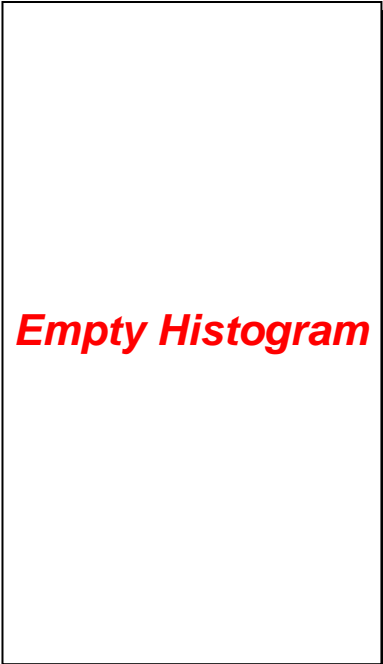
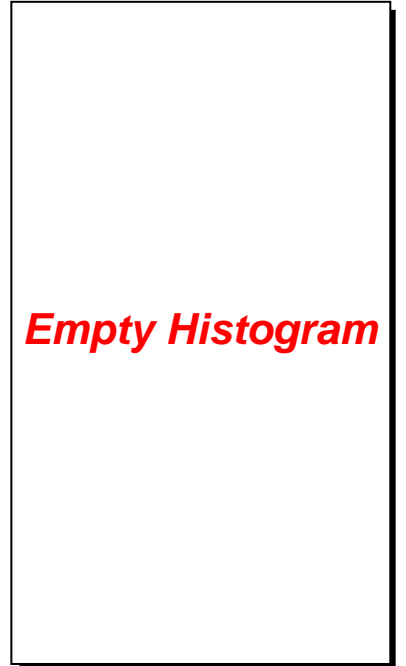
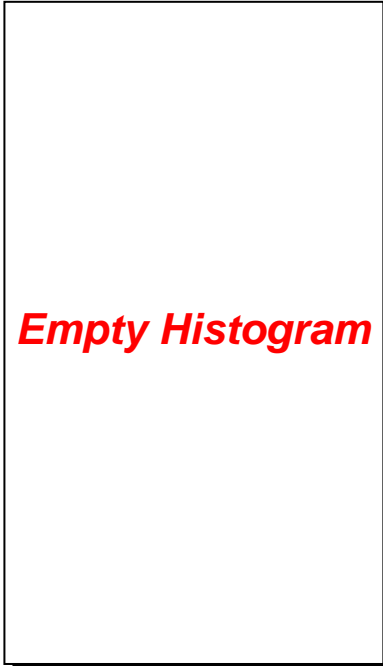


R-arm FP Rotated x vs. y



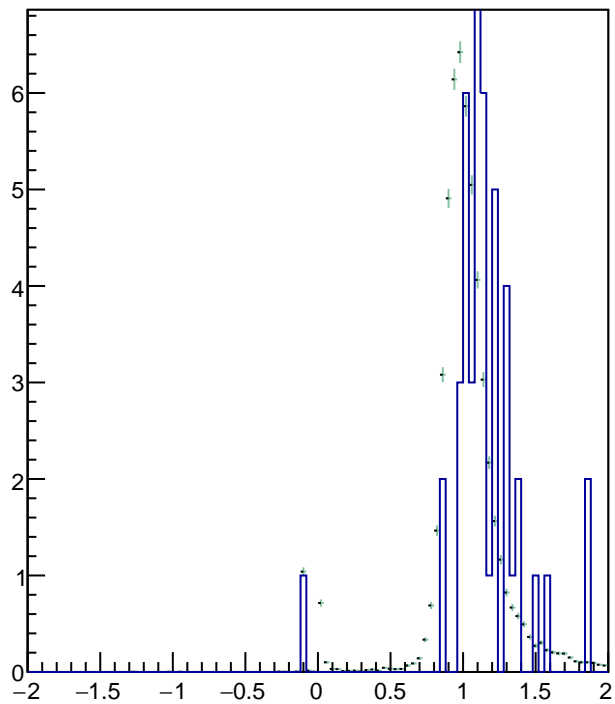
R-arm FP Rotated theta vs. phi



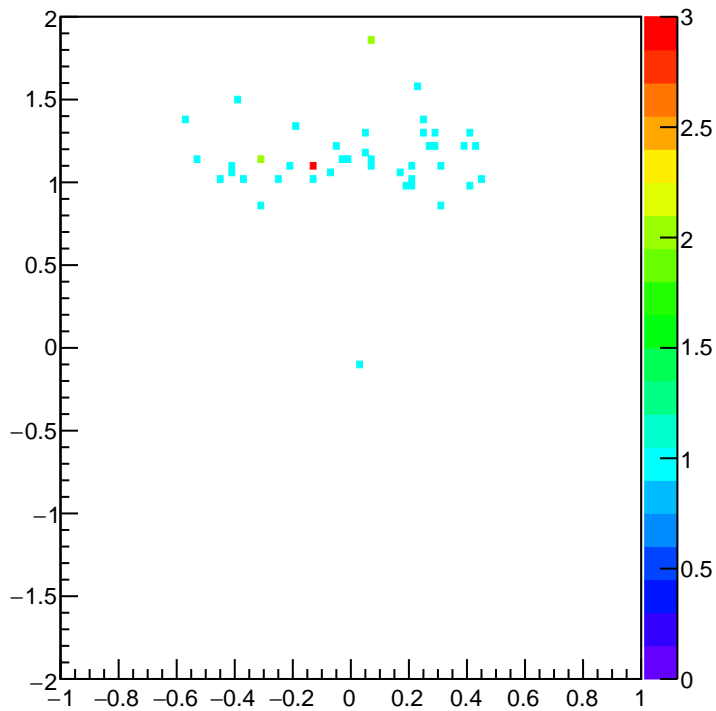


Track Beta

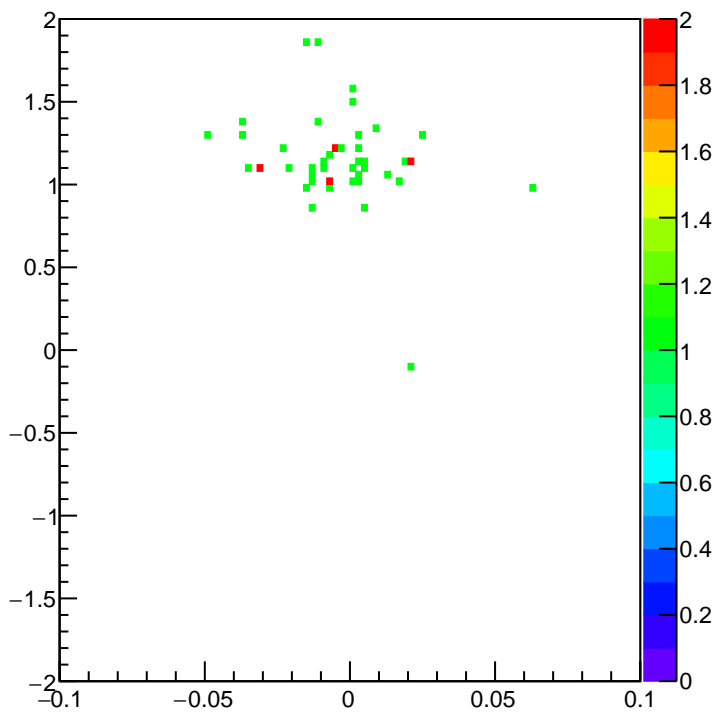
R-arm Track Beta



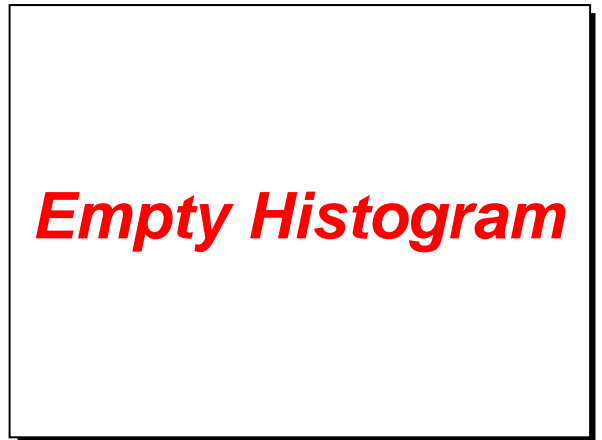
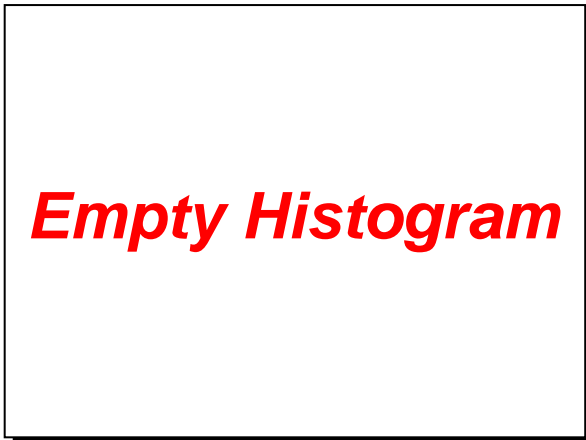
R-arm Track Beta vs. Track X



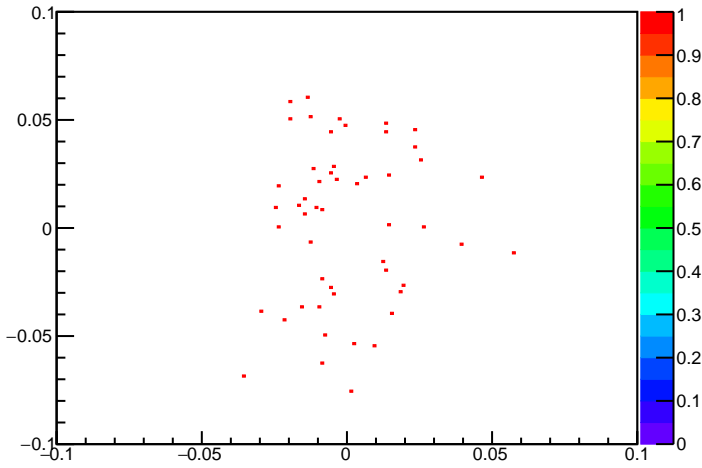
R-arm Track Beta vs. Track Y



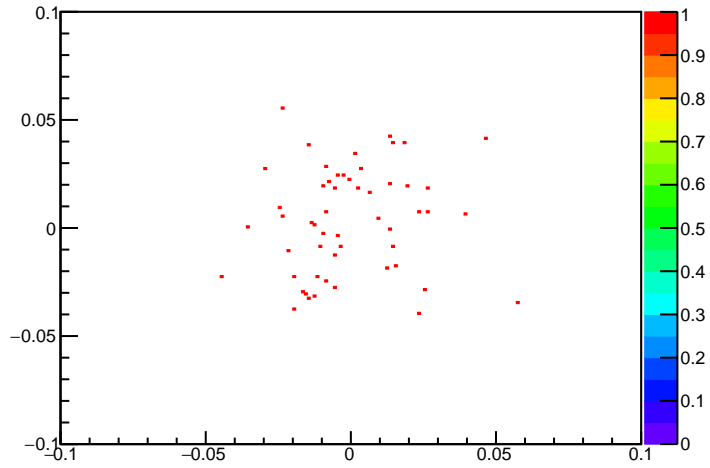
Tracking and Reconstruction



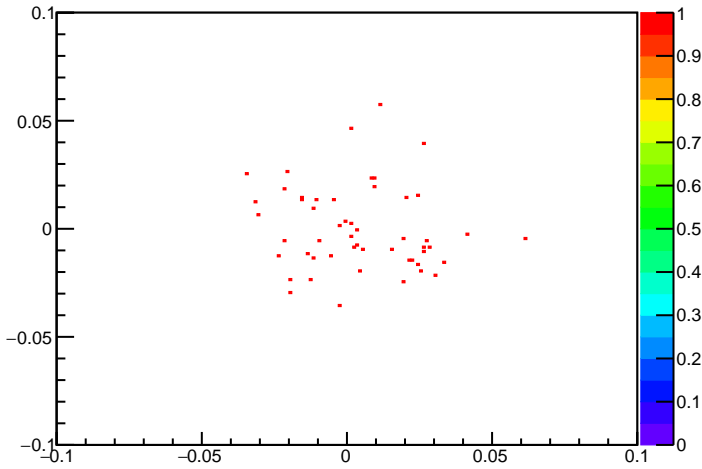
R-arm tgt theta vs. phi



R-arm tgt delta vs. phi

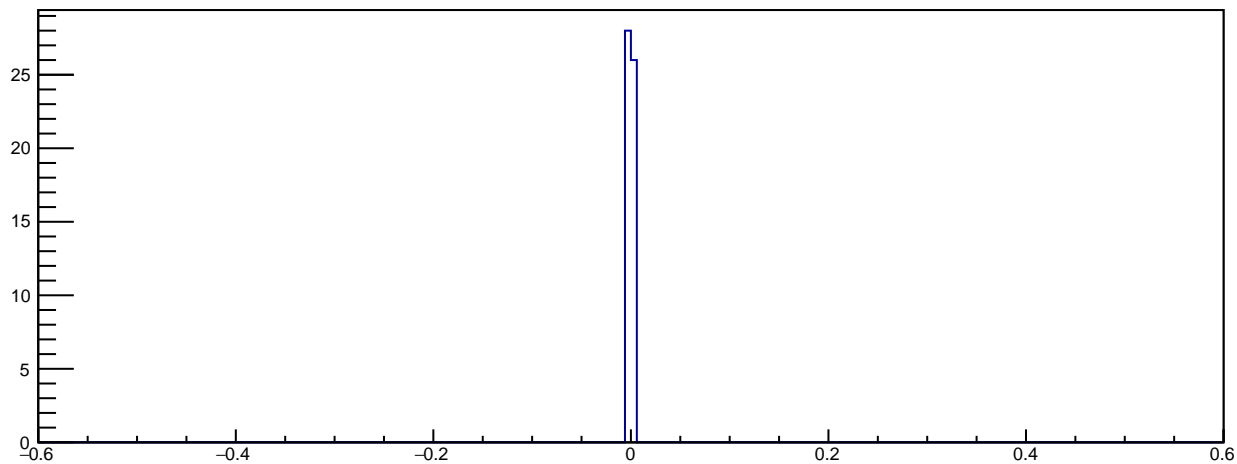


R-arm tgt phi vs. tgt y

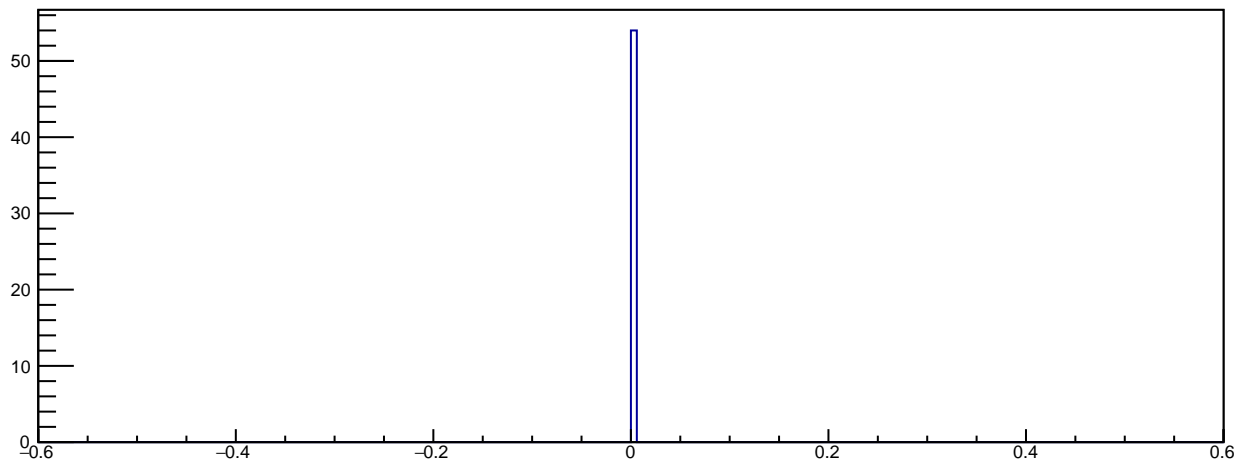


Reaction Vertex

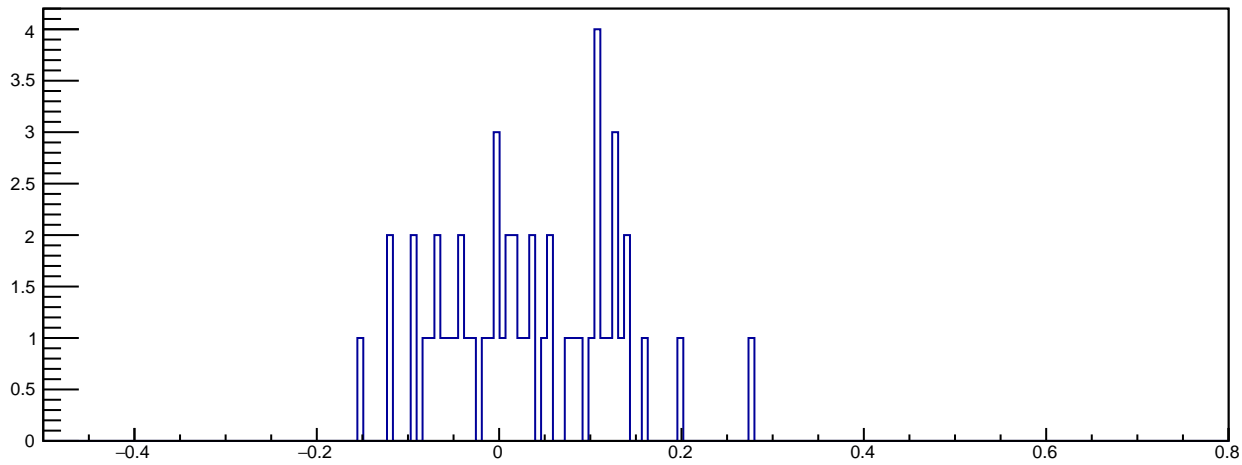
R-arm Reaction X vertex



R-arm Reaction Y vertex

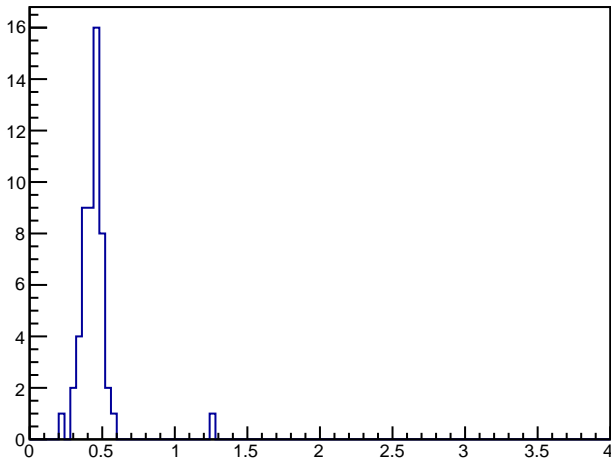


R-arm Reaction Z vertex

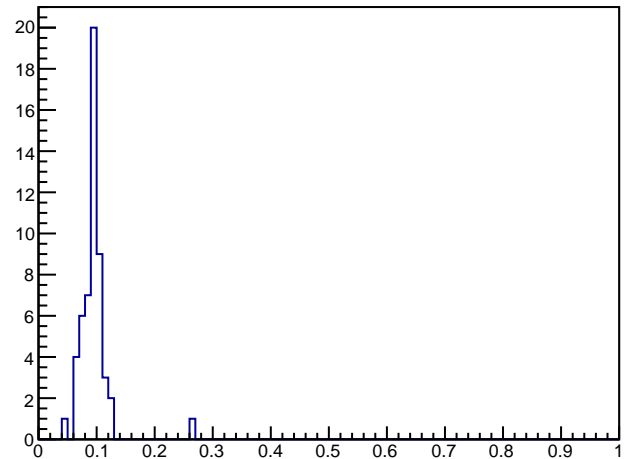


Physics

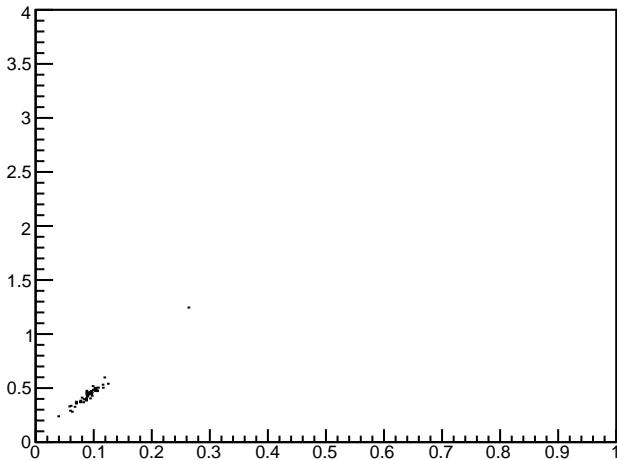
R-arm Q2, 4-momentum transfer



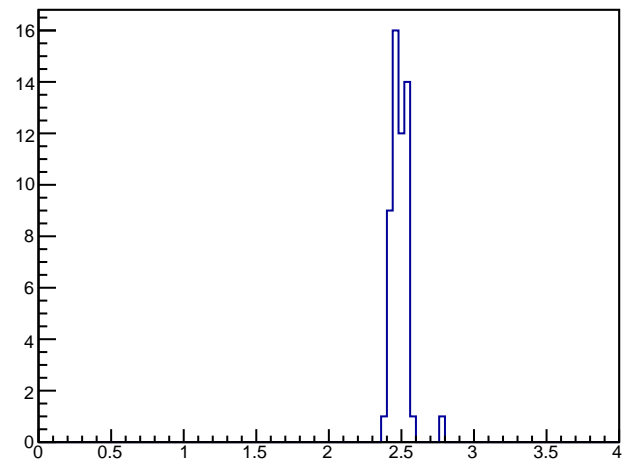
R-arm Bjorken x



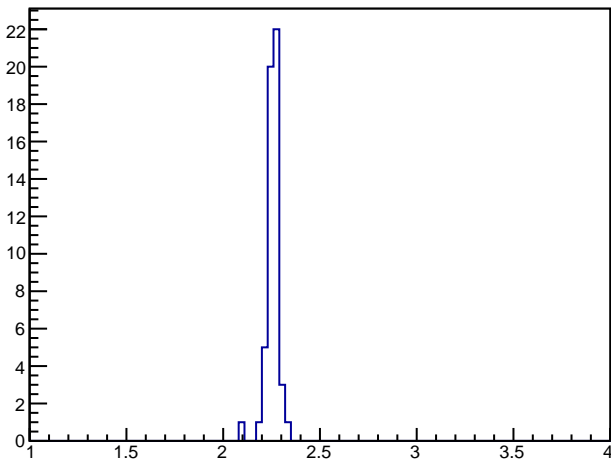
R-arm Q2 vs x_{bj}



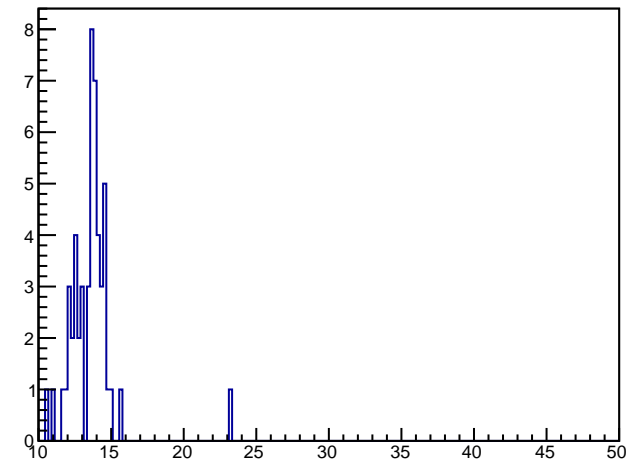
R-arm nu, energy transfer



R-arm invariant mass W

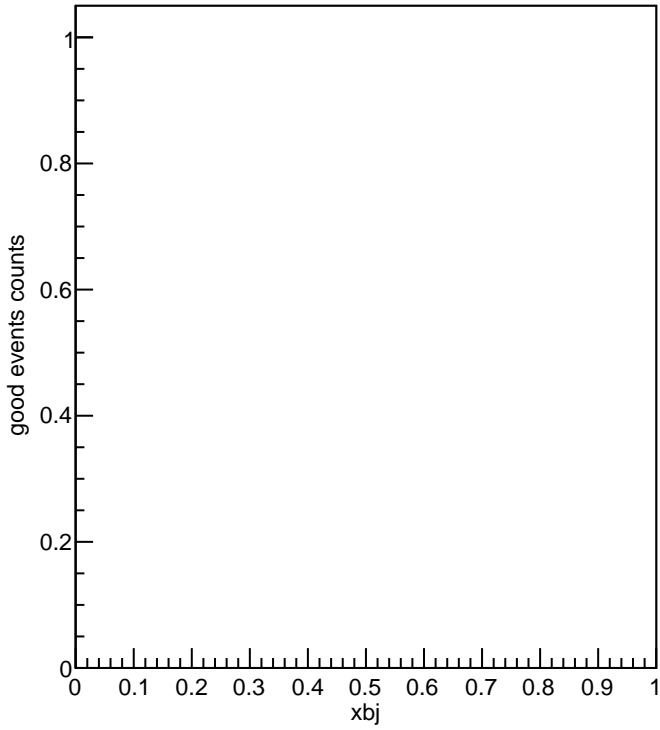


R-arm scattering angle (deg)

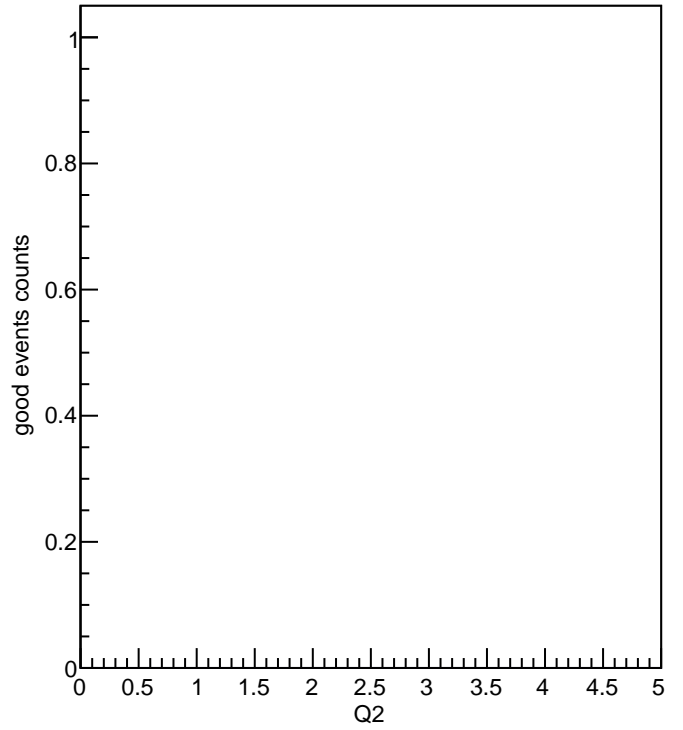


Good Events Rate

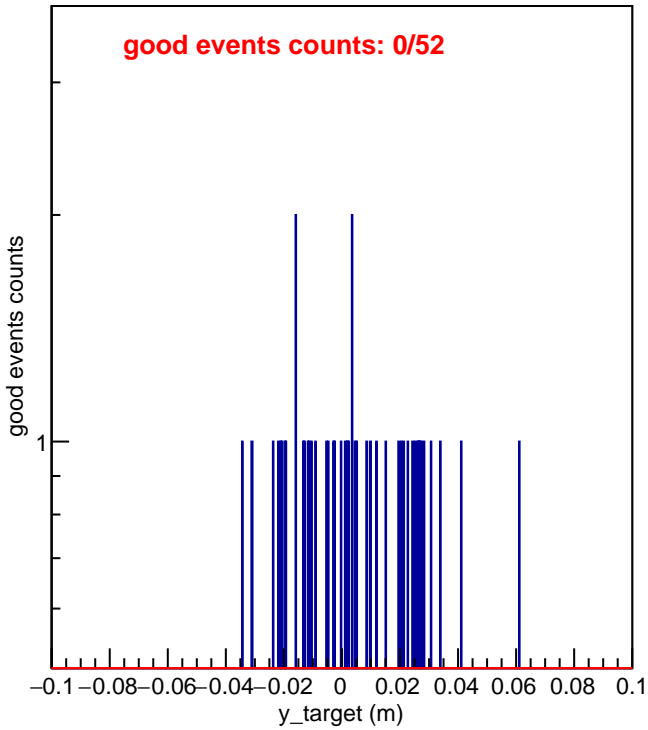
xbj w/ acc and tgy cuts



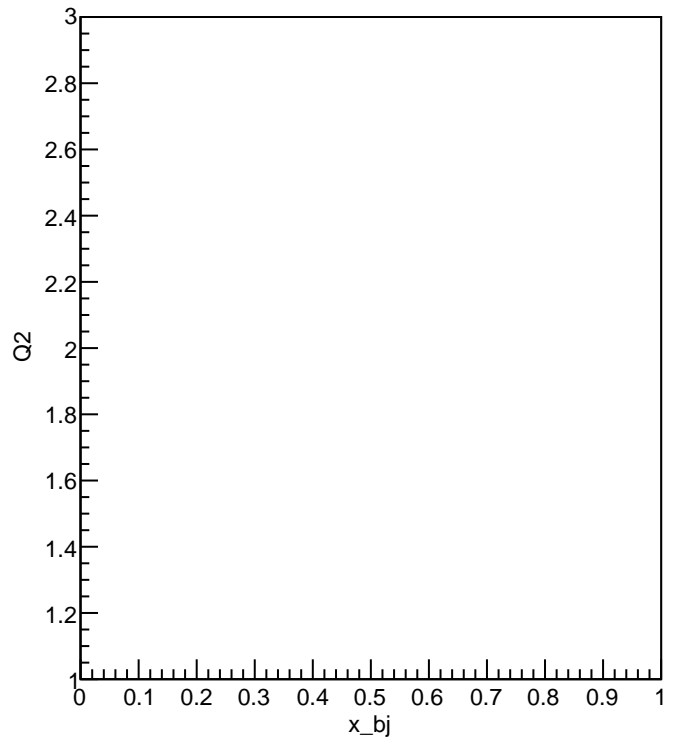
Q2 w/ acc and tgy cuts



ytarget w/ acc cuts

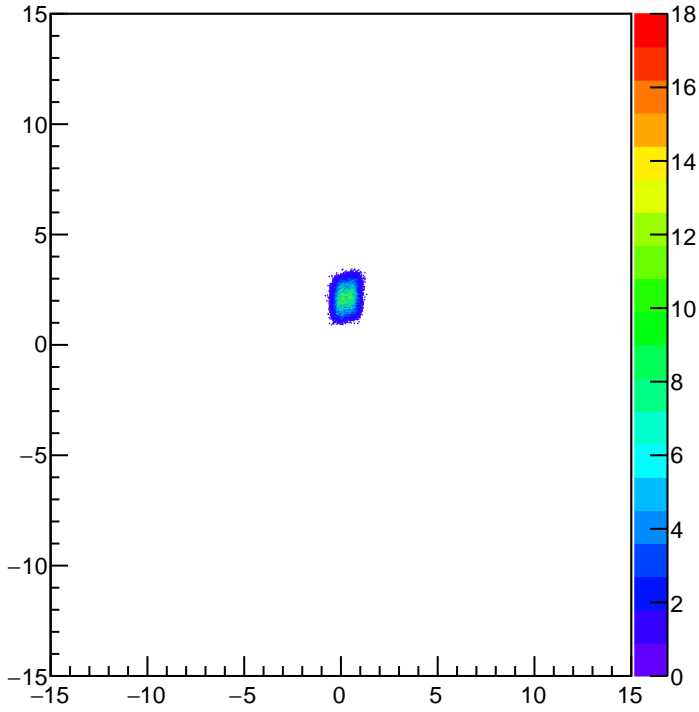


Q2 v.s. xbj (w/ acc, tgy cuts)

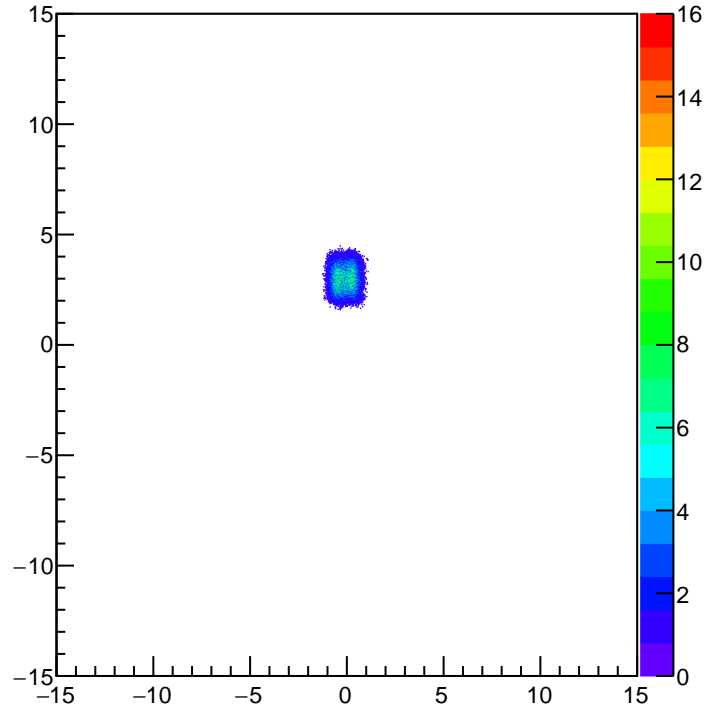


BPM/Target Information (2-D)

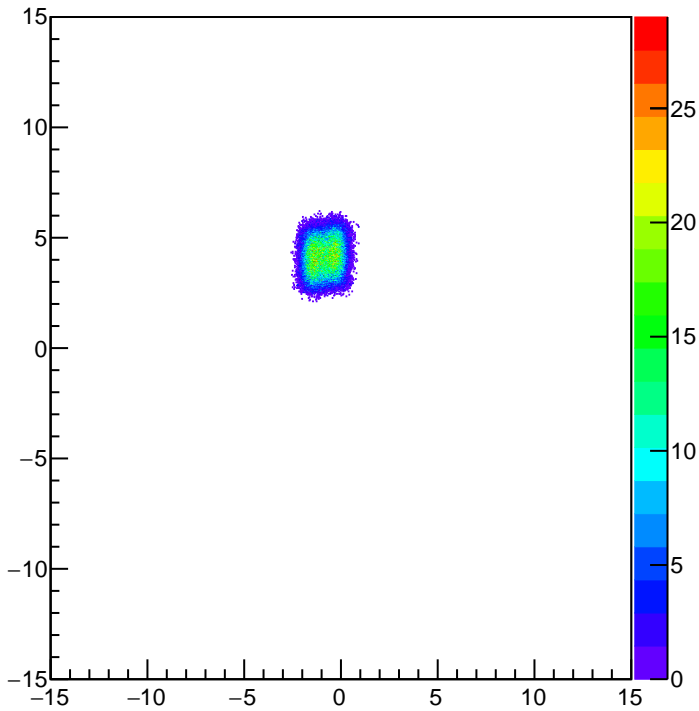
BPMA y vs x



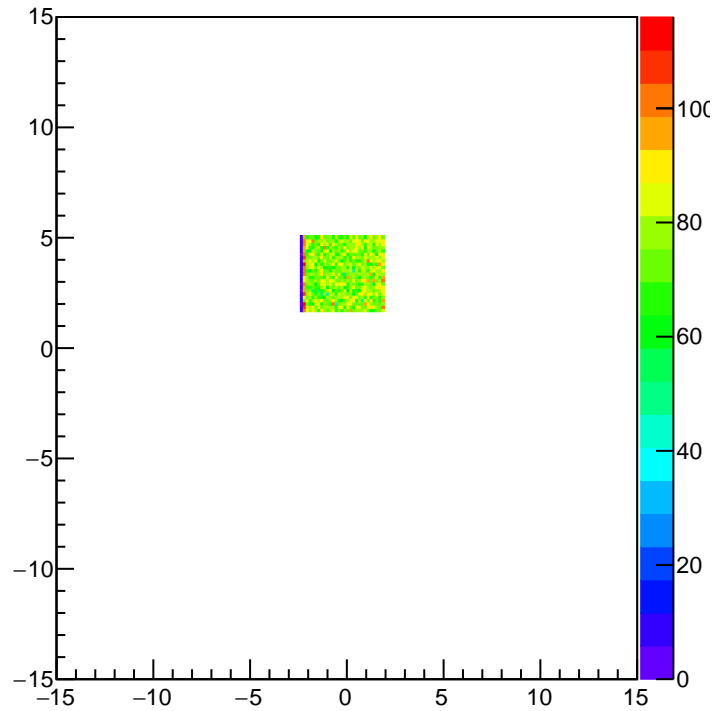
BPMB y vs x



Beam at target y vs x (unrastered)

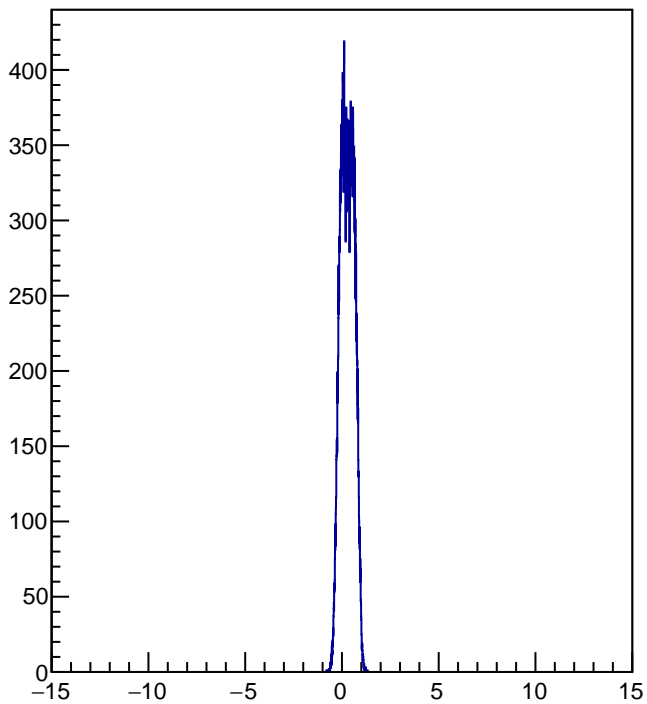


Beam at target y vs x (from Rasters)

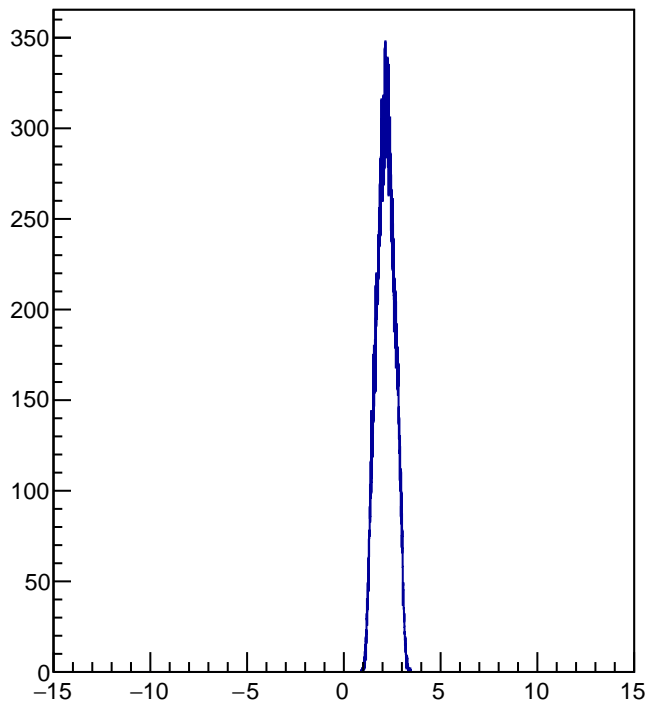


BPM Information (1-D)

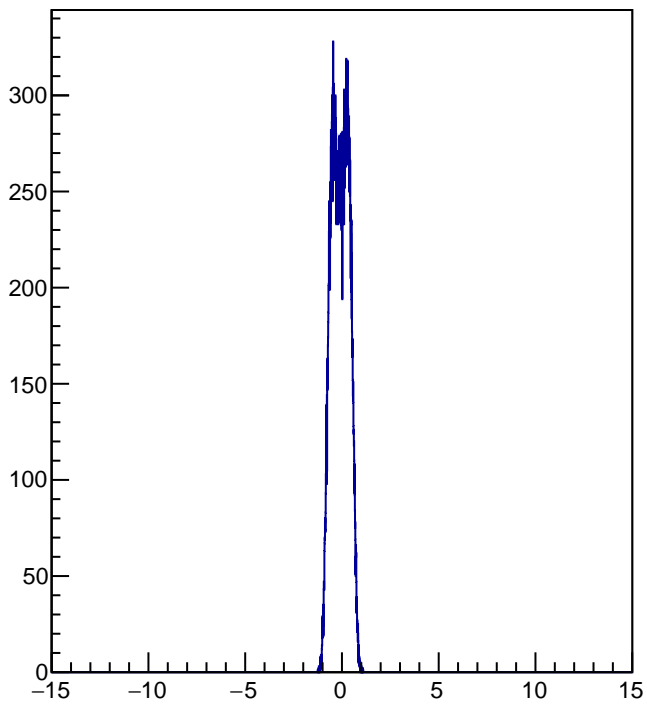
BPMA x [mm]



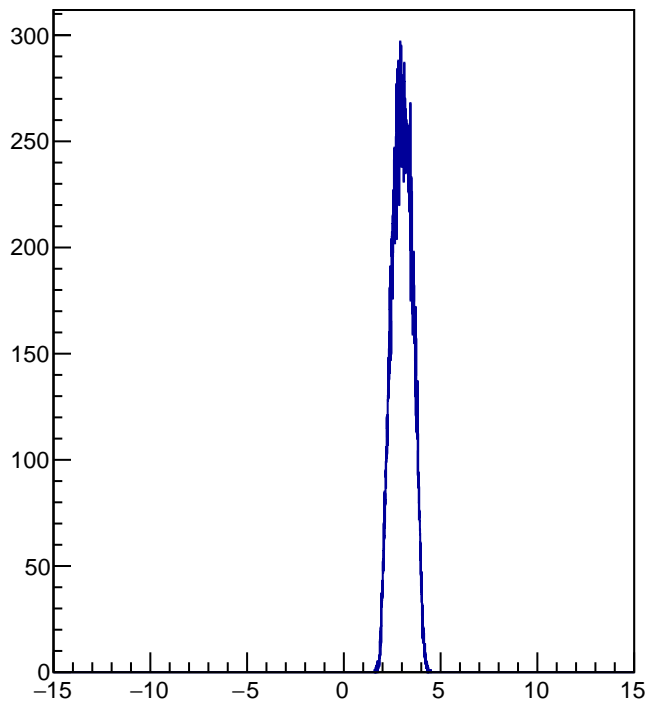
BPMA y [mm]



BPMB x [mm]

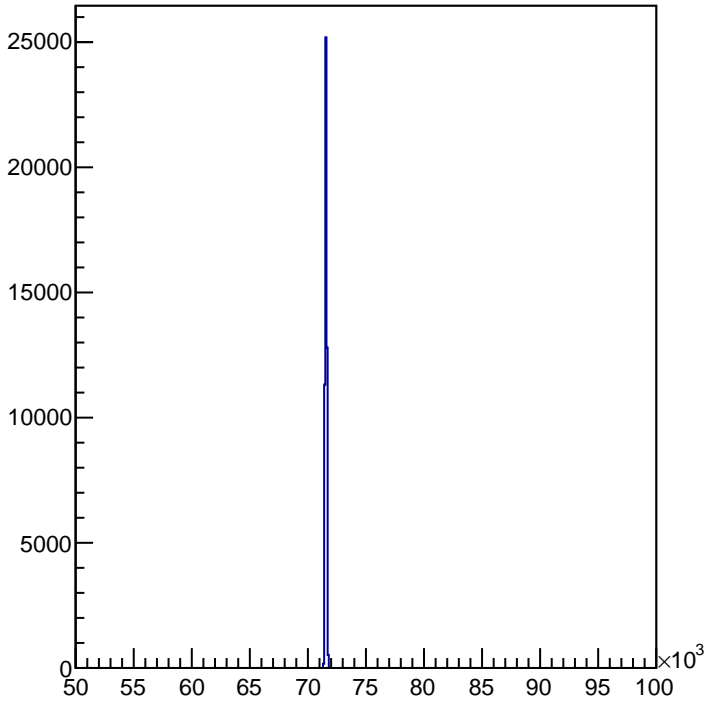


BPMB y [mm]

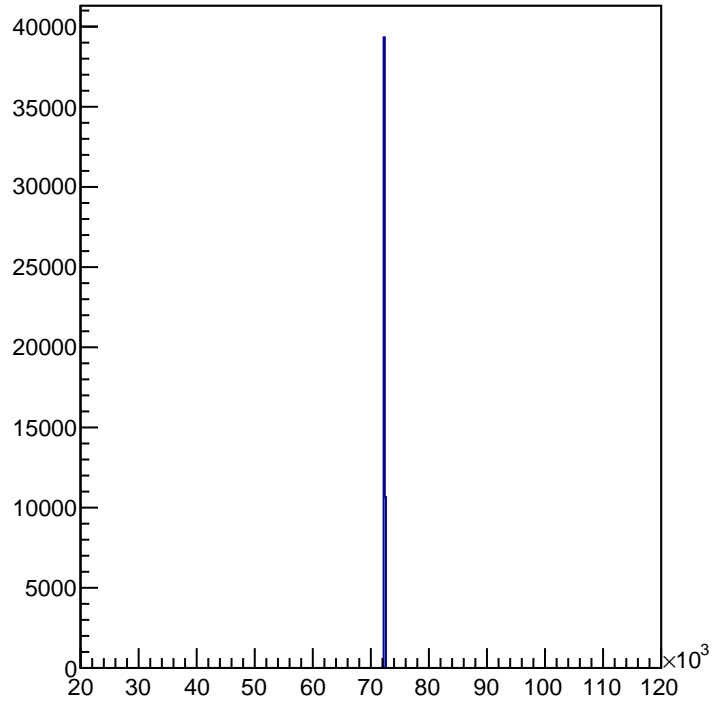


Raster Current Information (1-D)

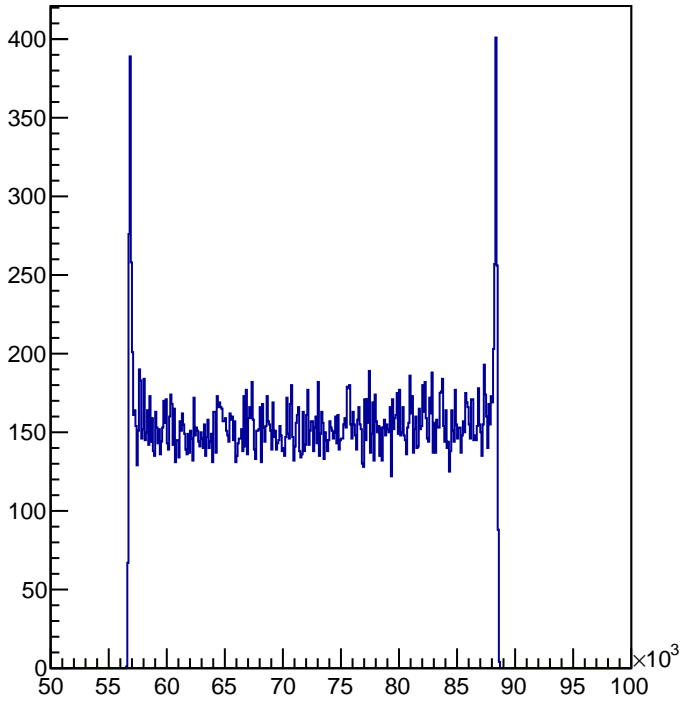
Fast Raster 1 X current



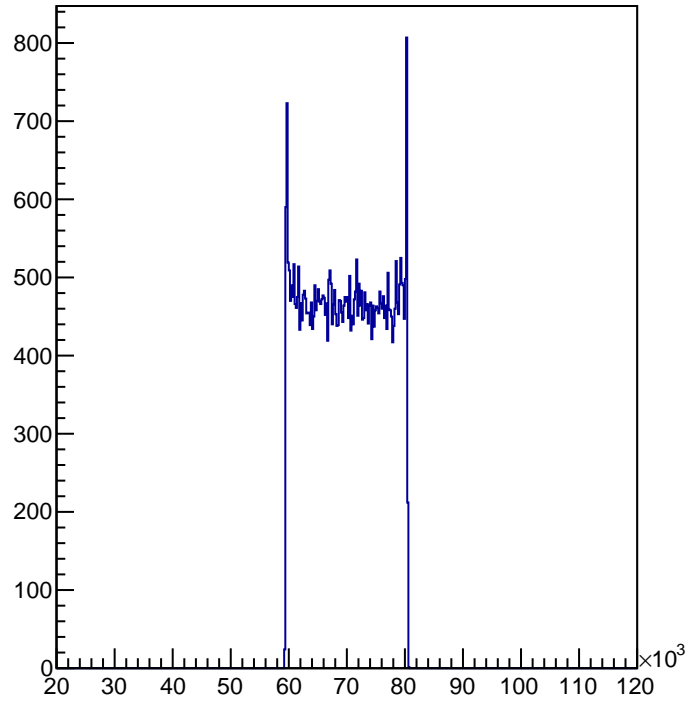
Fast Raster 1 Y current



Fast Raster 2 X current

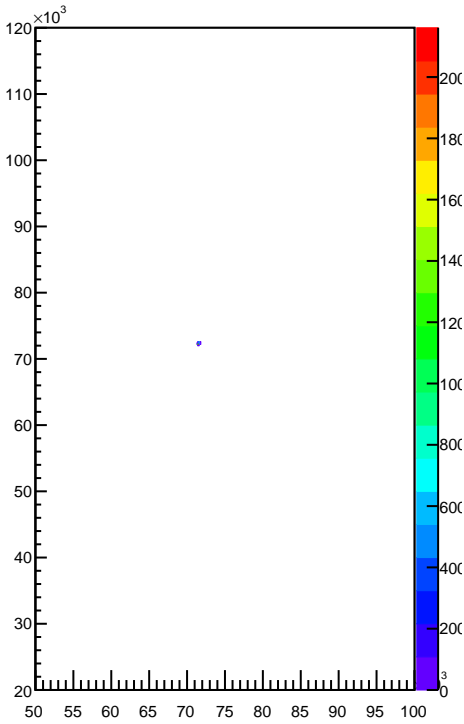


Fast Raster 2 Y current

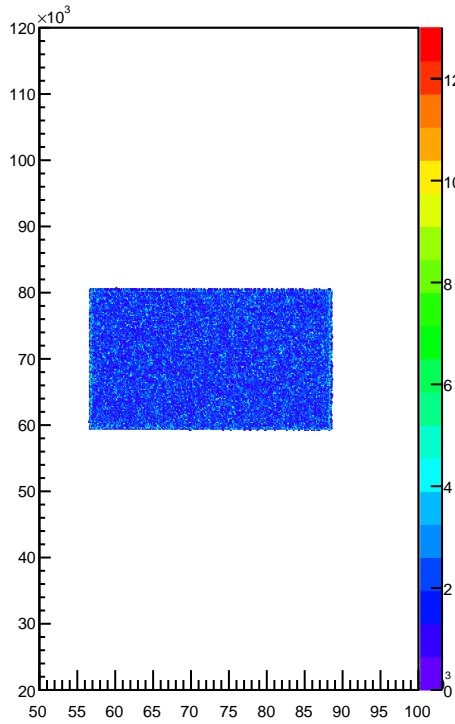


Raster Current Information (2-D)

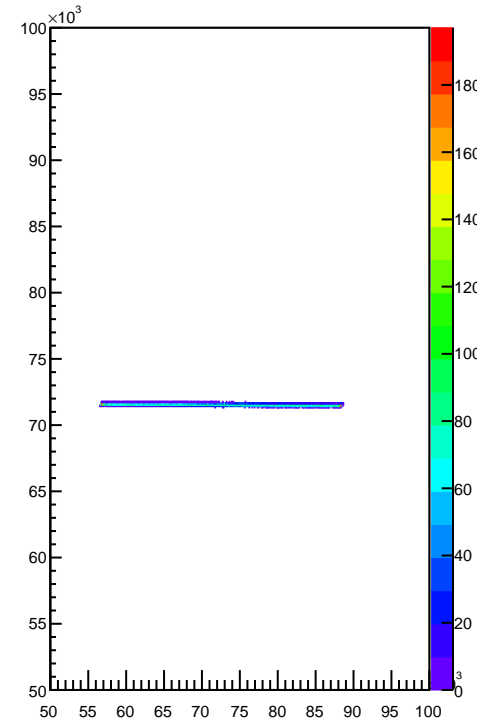
Fast Raster 1 X vs Y (current)



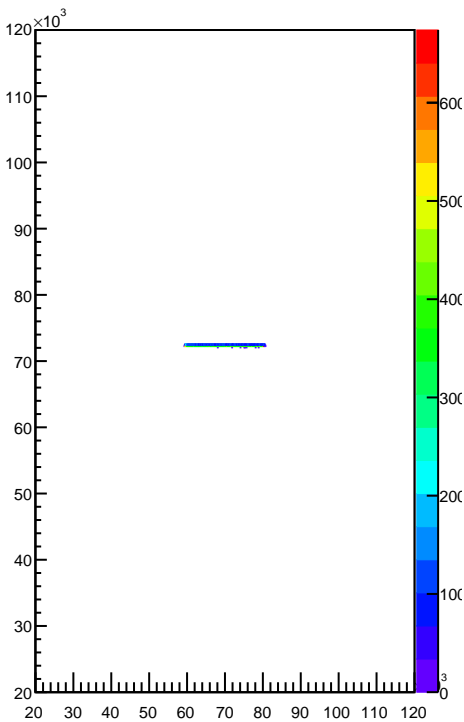
Fast Raster 2 X vs Y (current)



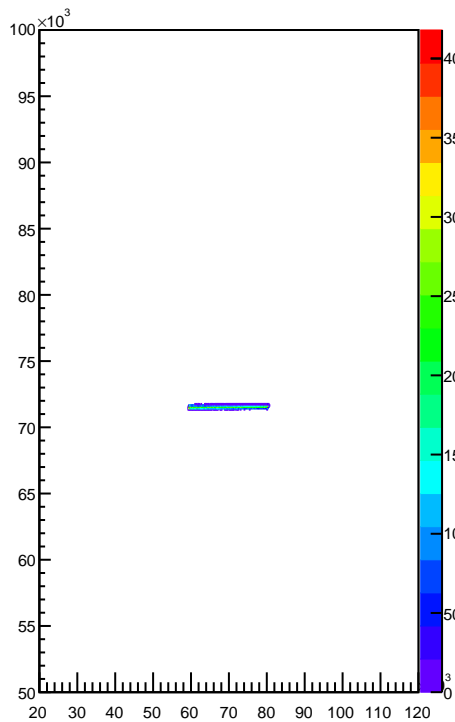
Fast Raster 1 X vs 2 X (current)



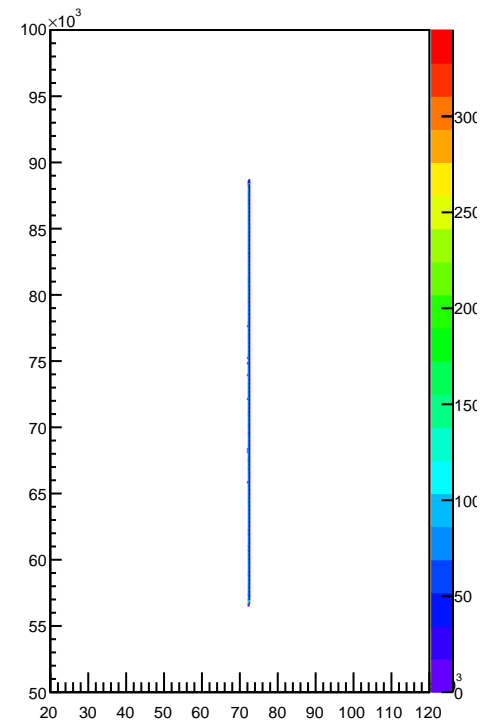
Fast Raster 1 Y vs 2 Y (current)



Fast Raster 1 X vs 2 Y (current)

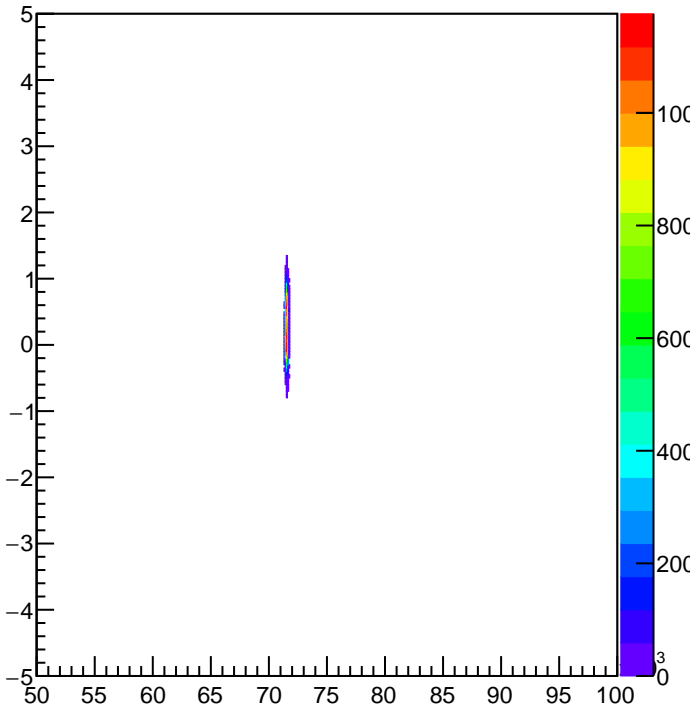


Fast Raster 2 X vs 1 Y (current)

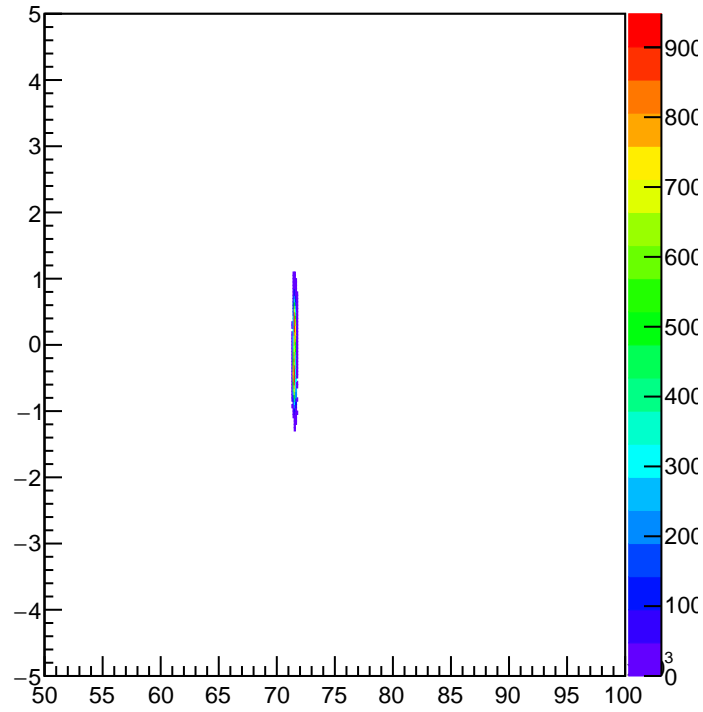


Up Raster/BPM Sync

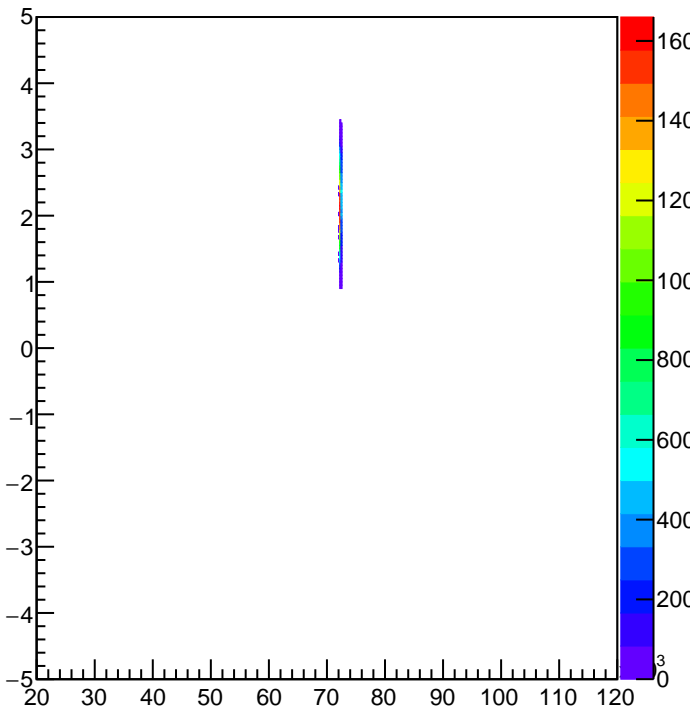
Up Fast Raster Current vs BPMA X



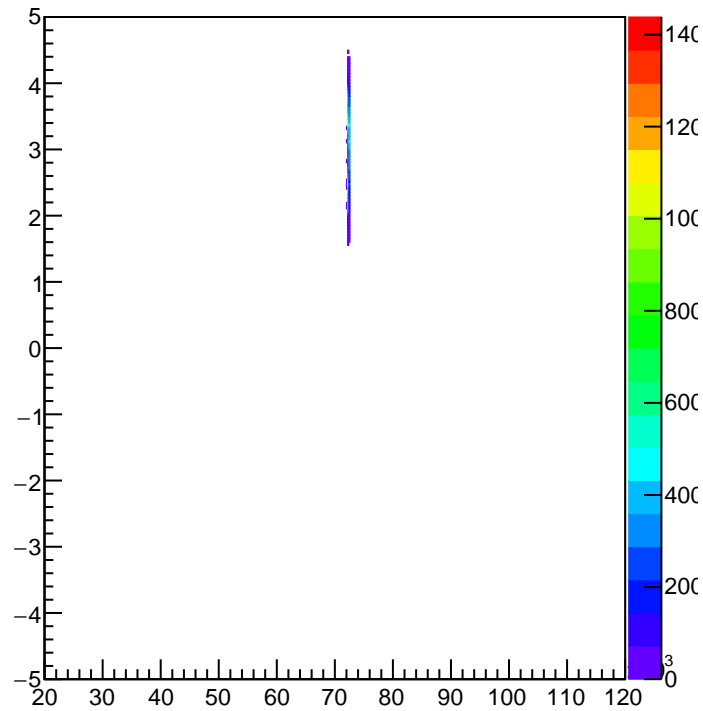
Up Fast Raster Current vs BPMB X



Up Fast Raster Current vs BPMA Y

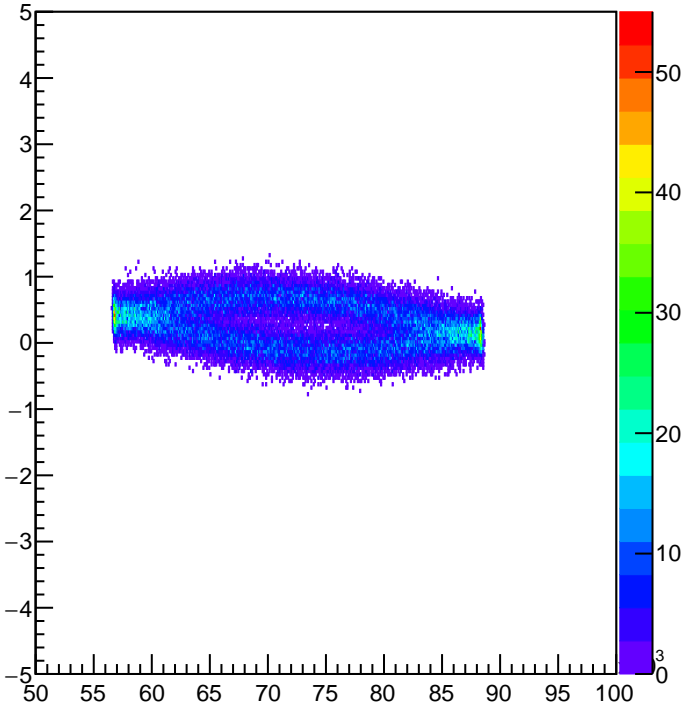


Up Fast Raster Current vs BPMB Y

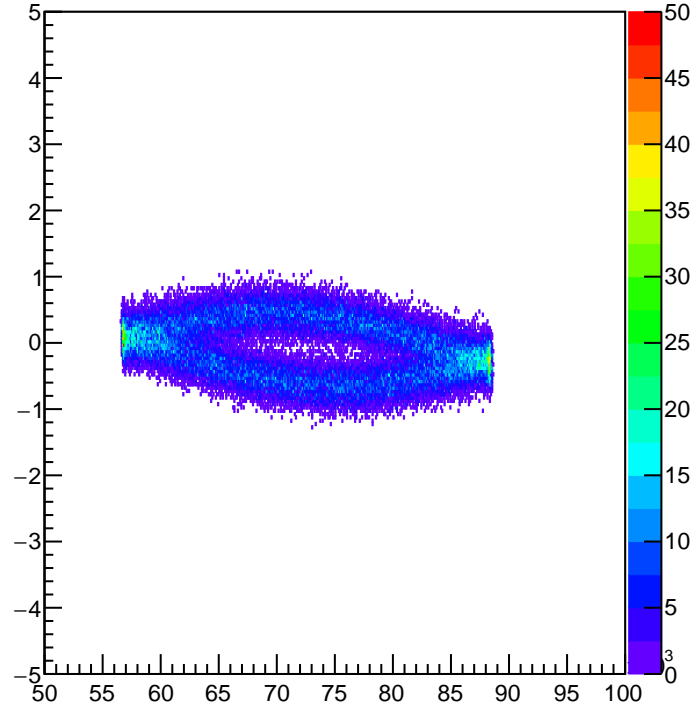


Down Raster/BPM Sync

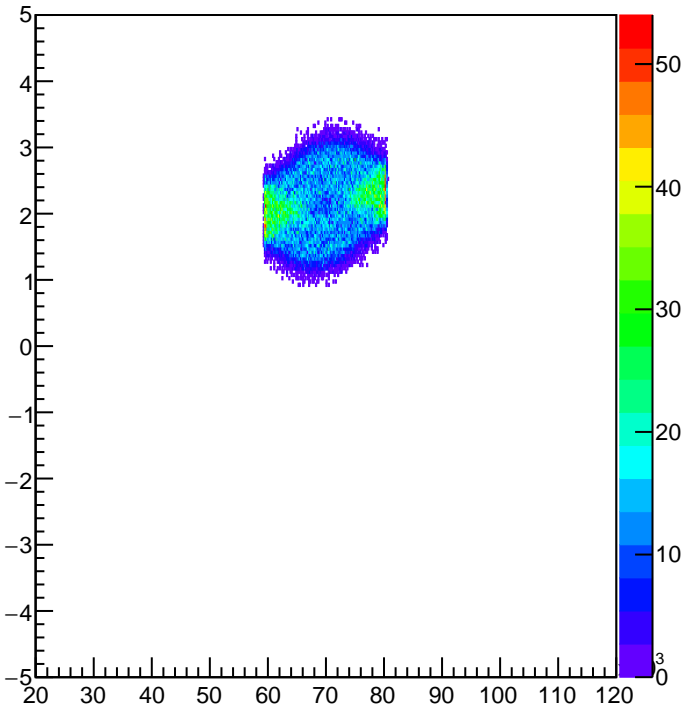
Down Fast Raster Current vs BPMA X



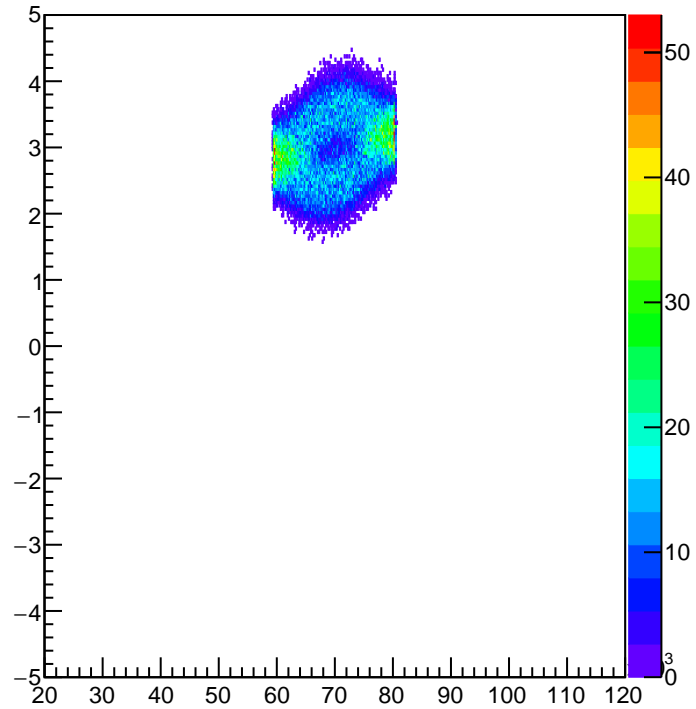
Down Fast Raster Current vs BPMB X



Down Fast Raster Current vs BPMA Y

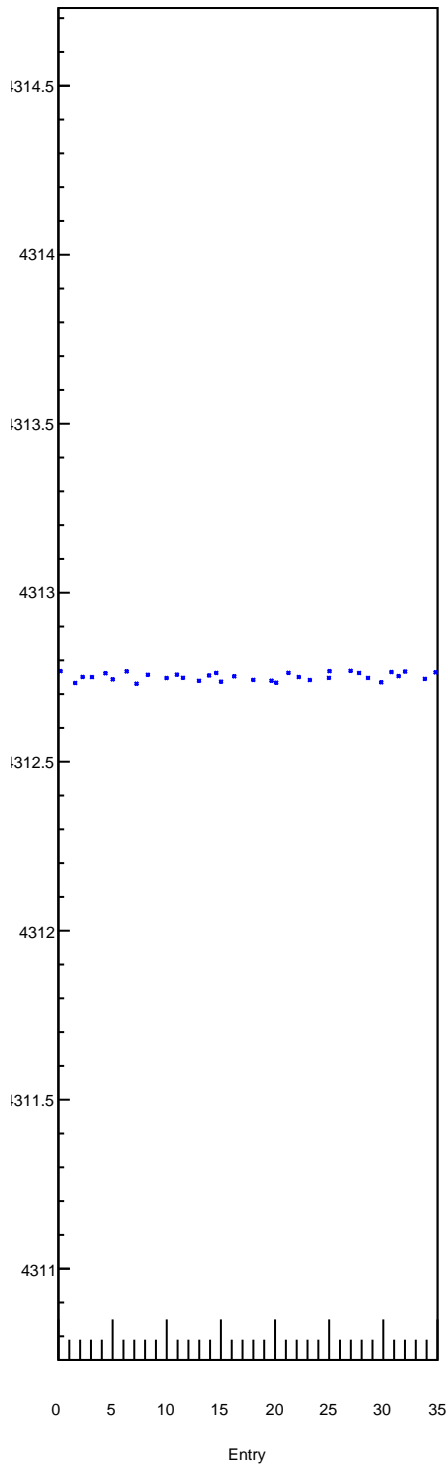


Down Fast Raster Current vs BPMB Y

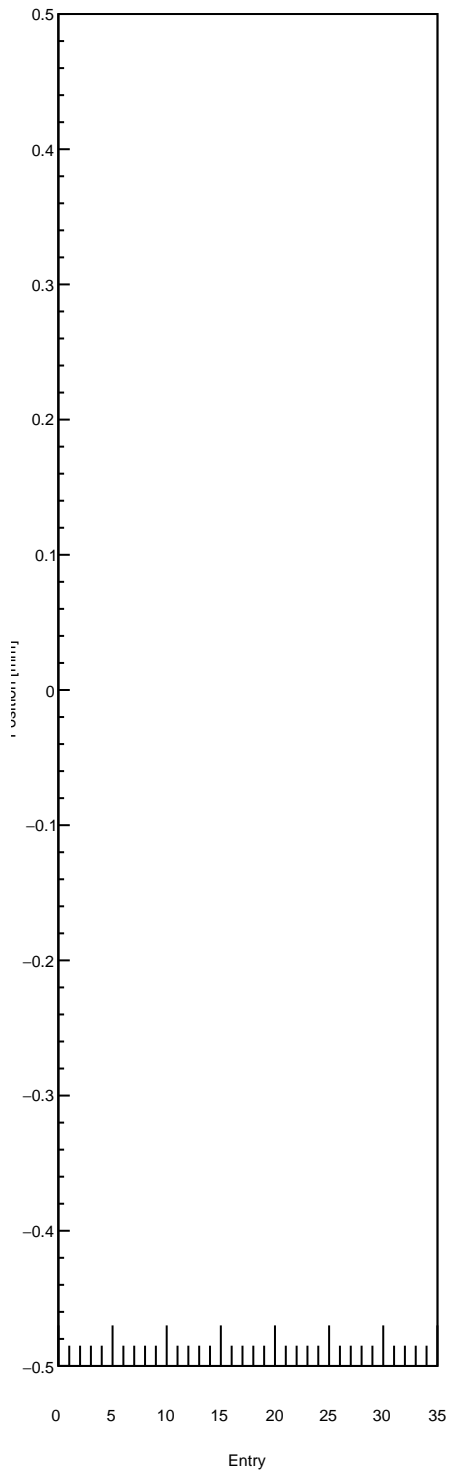


Beam Energy Stability

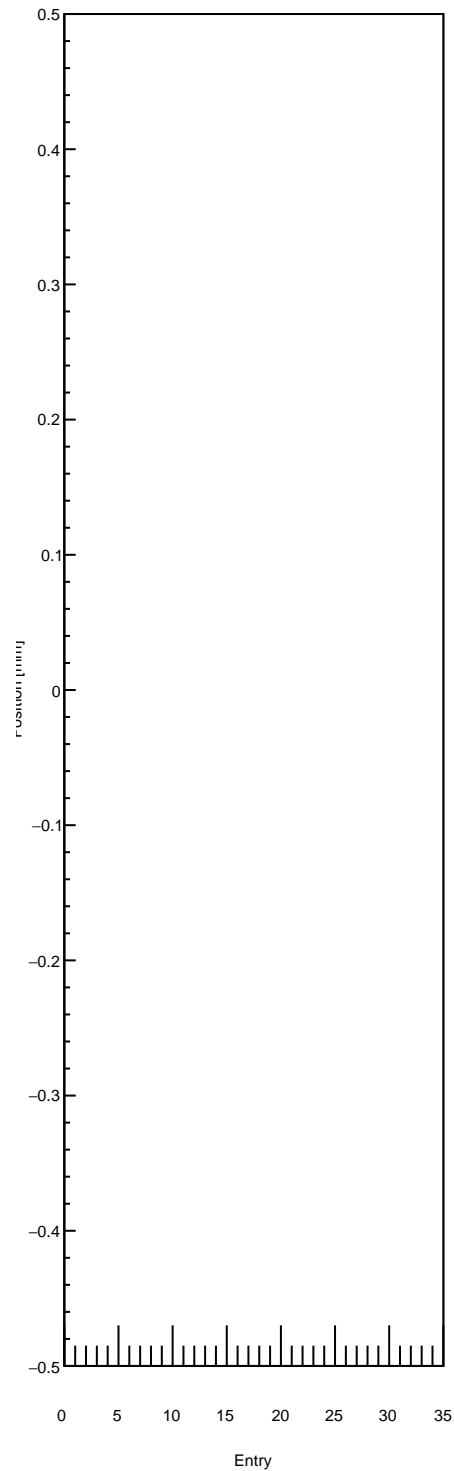
Beam energy from Epics



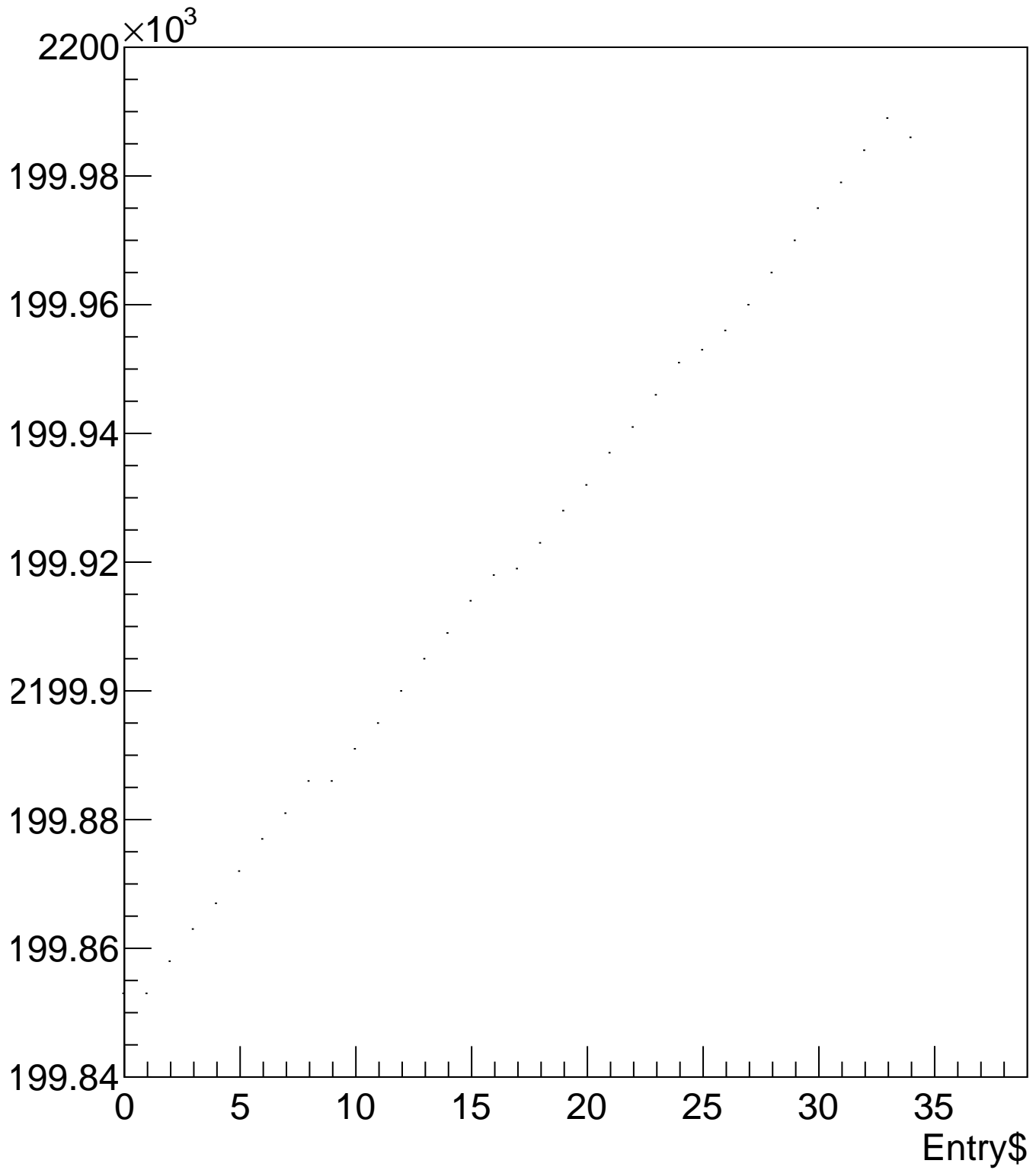
Horizontal Motion at 1C12



Vertical Motion at 1C12

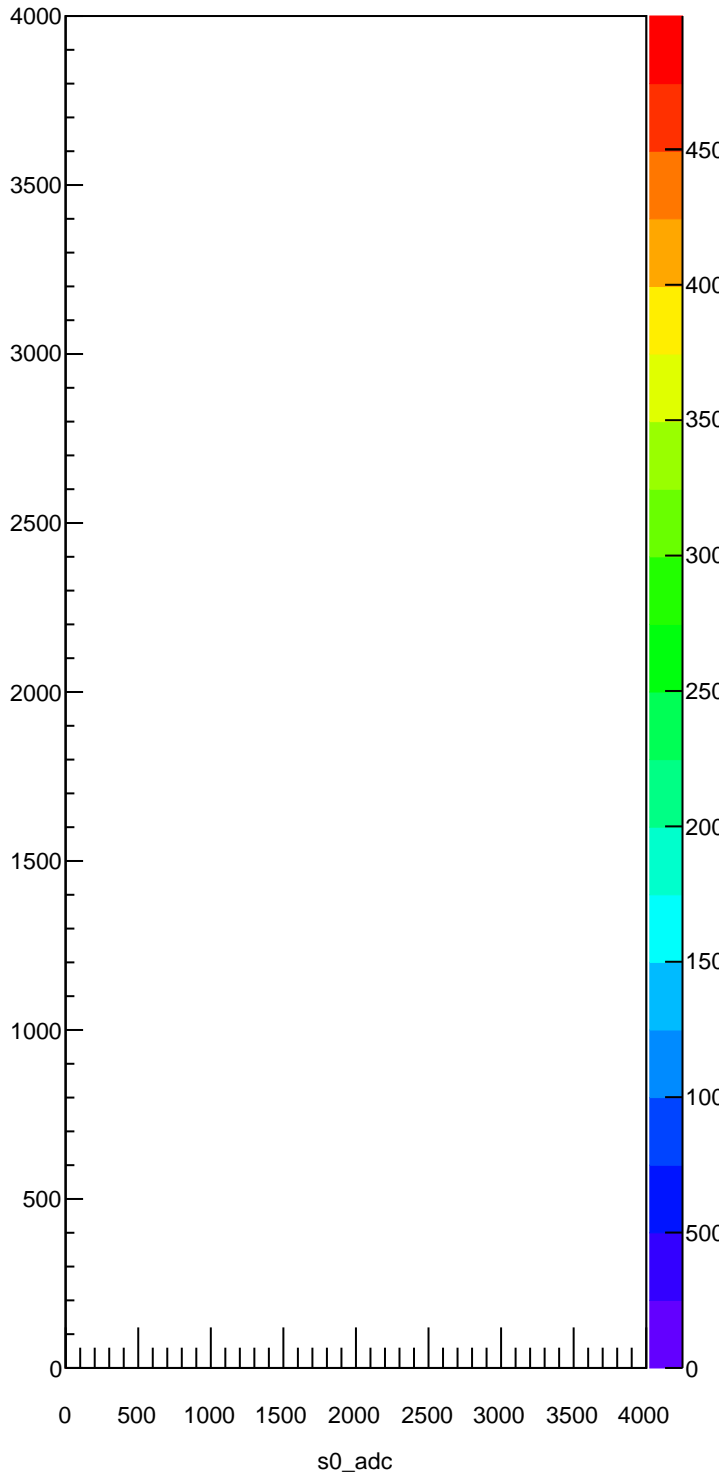


timestamp:Entry\$

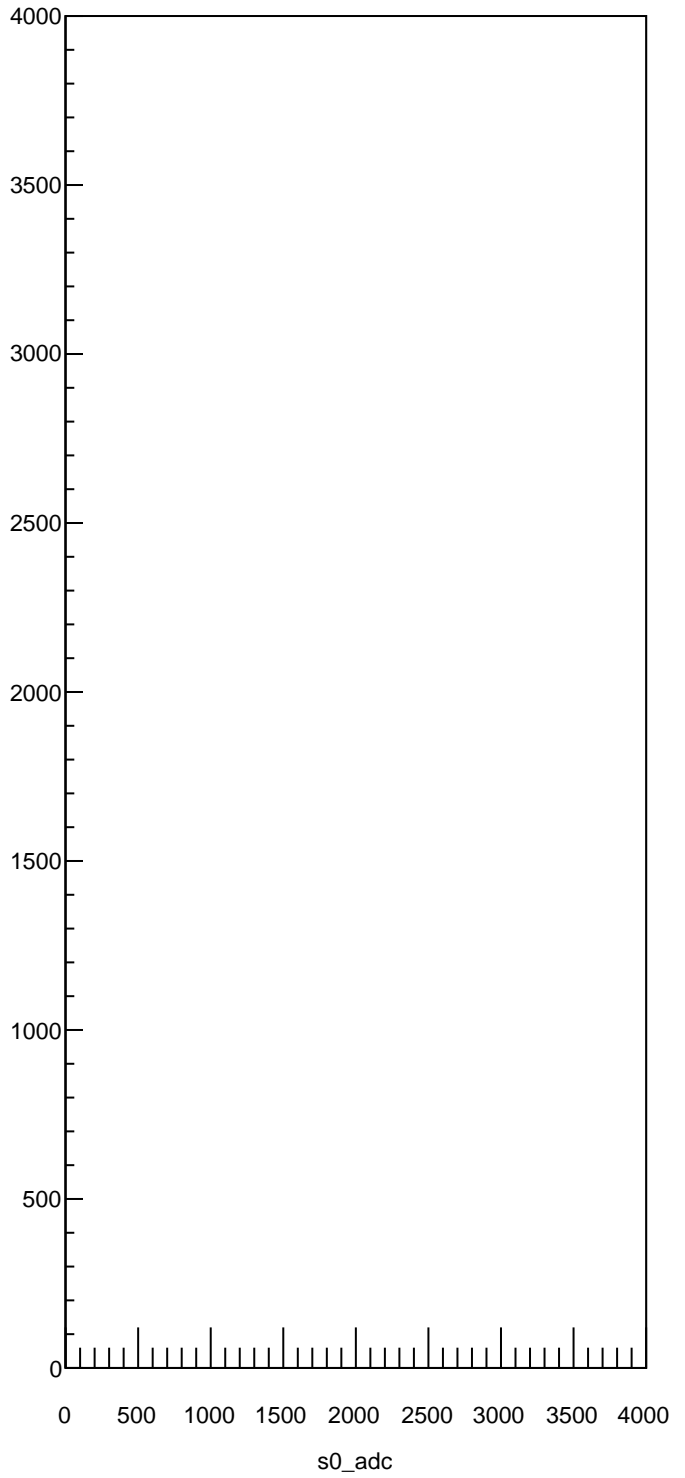


S0 ADC vs S2 ADC

s0 adc vs s2 adc

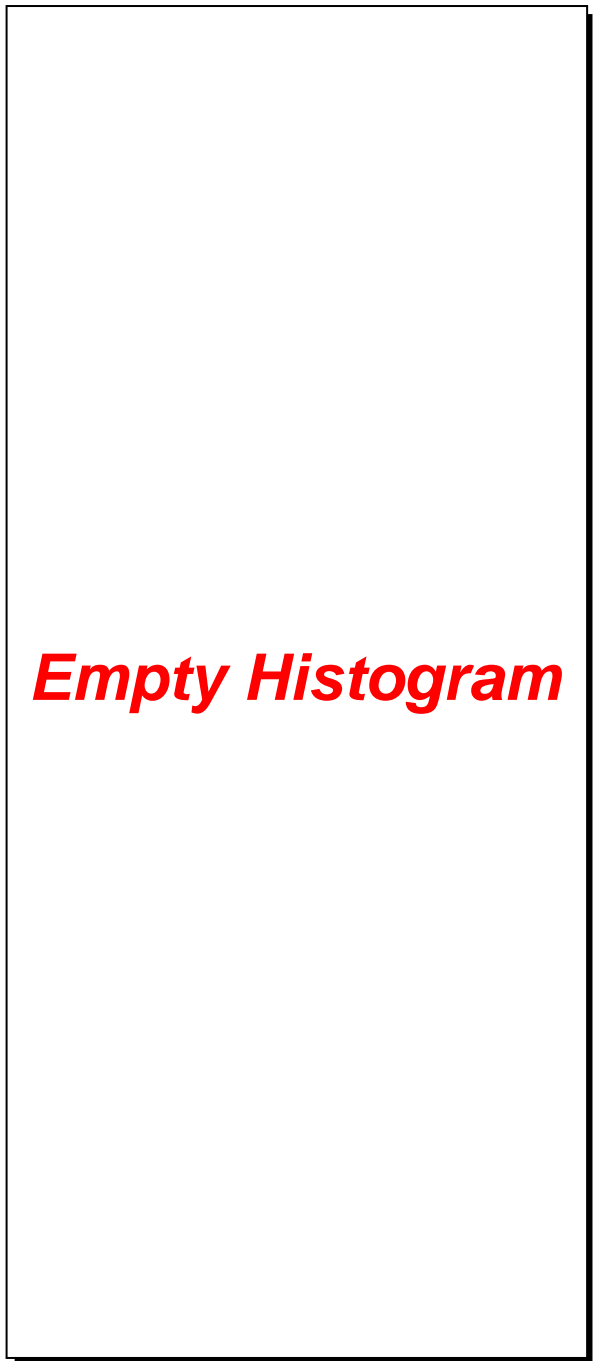
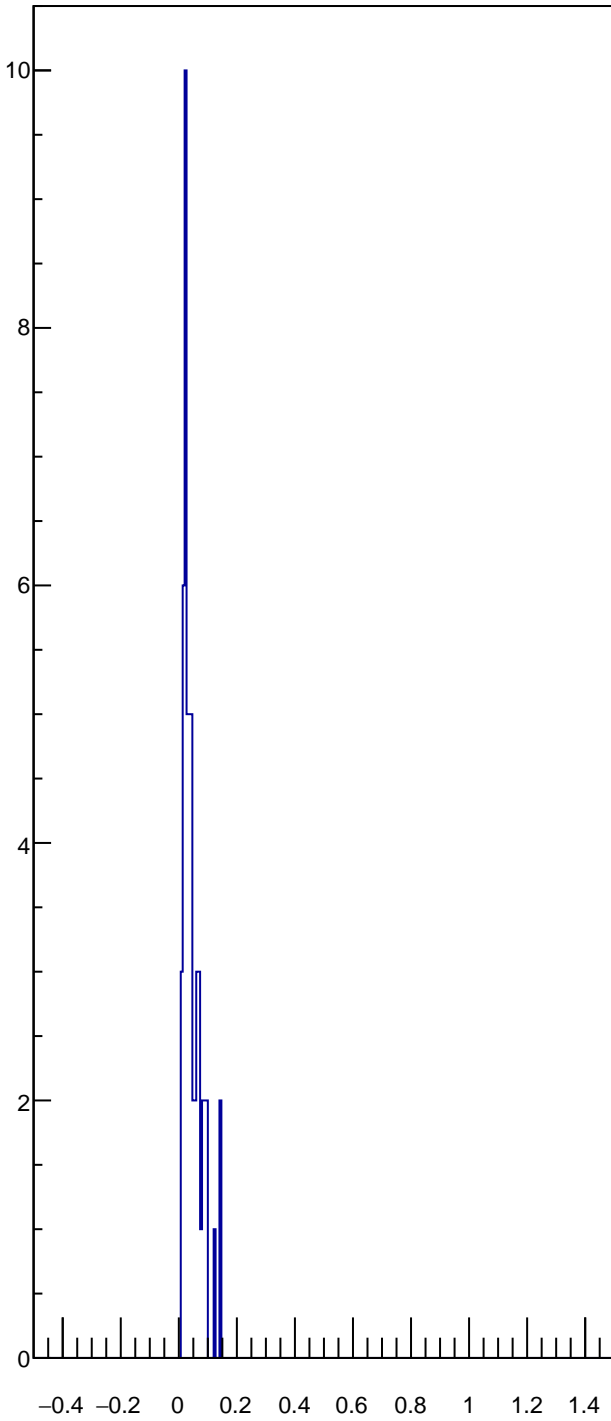


s0 adc vs s2 adc w cut



E over p

E/p



Empty Histogram

Empty Histogram

Empty Histogram

Empty Histogram

Empty Histogram

Empty Histogram

Empty Histogram

Empty Histogram

Empty Histogram

Empty Histogram