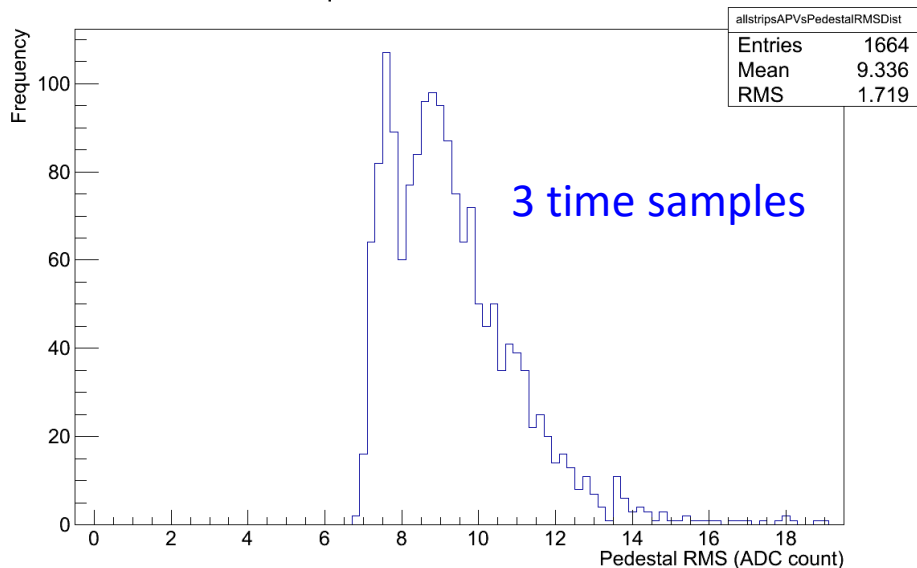


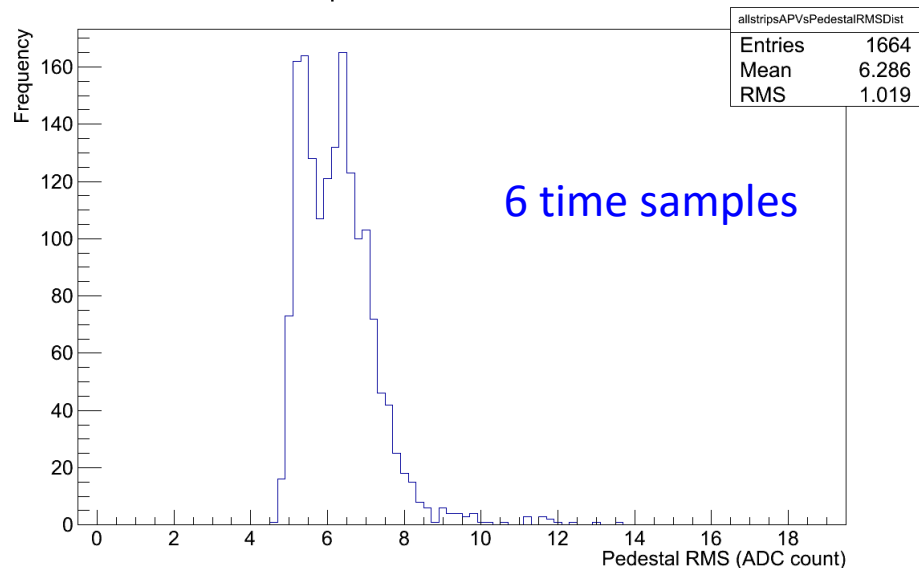
# APV25-SRS: RMS noise vs. nb of apv25 time sample

## APV25-SRS noise on SBS GEM Nov 2012

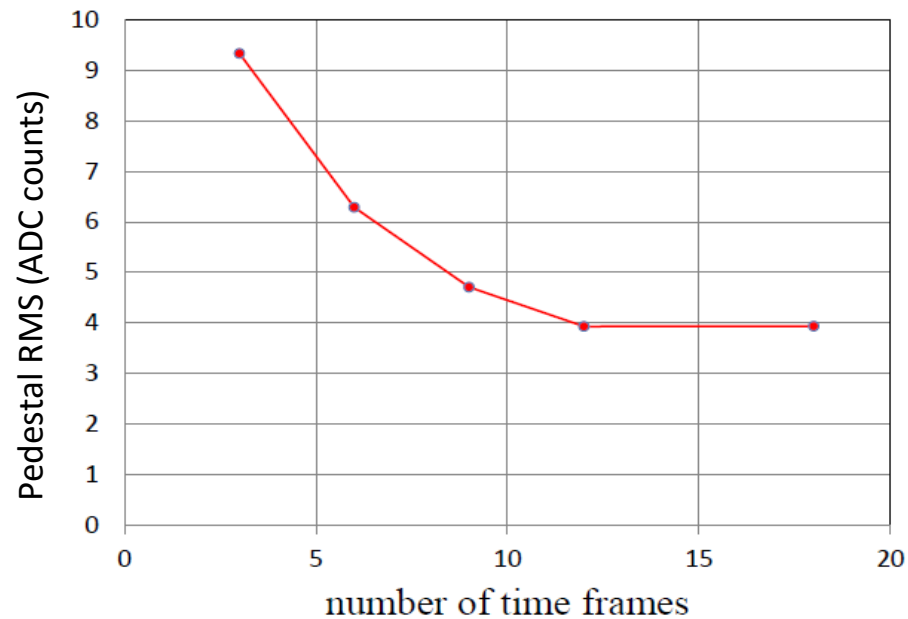
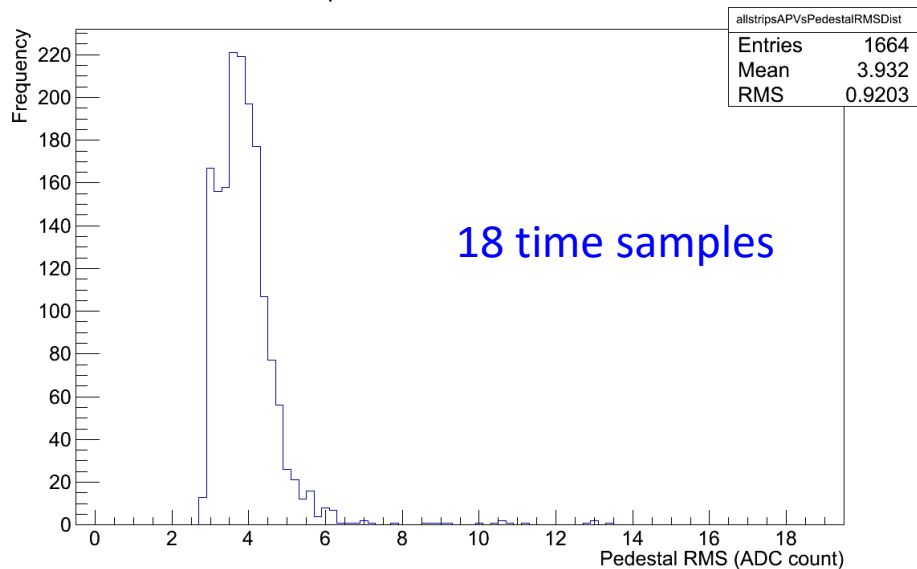
allstripsAPVsPedestalRMSDist



allstripsAPVsPedestalRMSDist



allstripsAPVsPedestalRMSDist

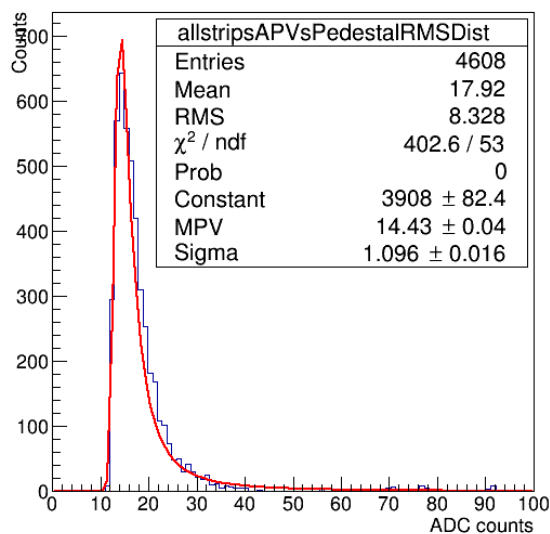


# APV25-SRS: RMS noise vs. nb of apv25 time sample

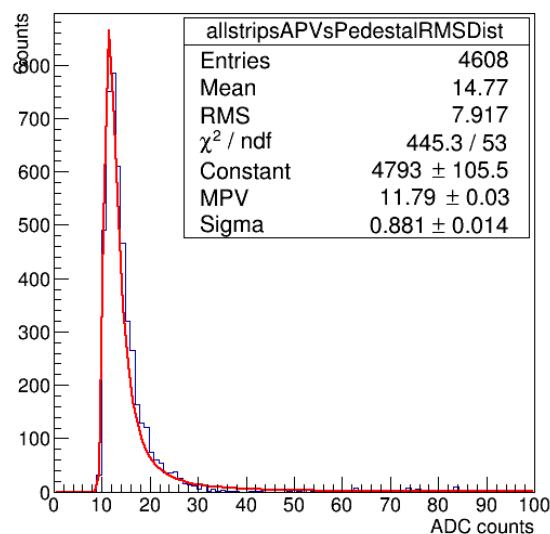
## APV25-SRS noise on PRad GEM (Nov 2015)

- Data taken with 6 time samples
- Pedestal RMS calculated for 1, 3, 6 time samples
- Pedestal results for 3 and 1 time samples can be biased compared to when using data taken with 1, 3 time samples
- **Common mode correction done before computing pedestals**

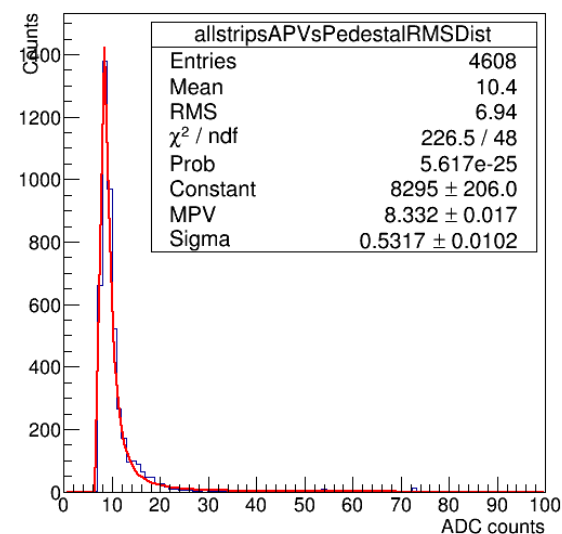
APV25 pedestal RMS with 1 time samples



APV25 pedestal RMS with 3 time samples



APV25 pedestal RMS with 6 time samples



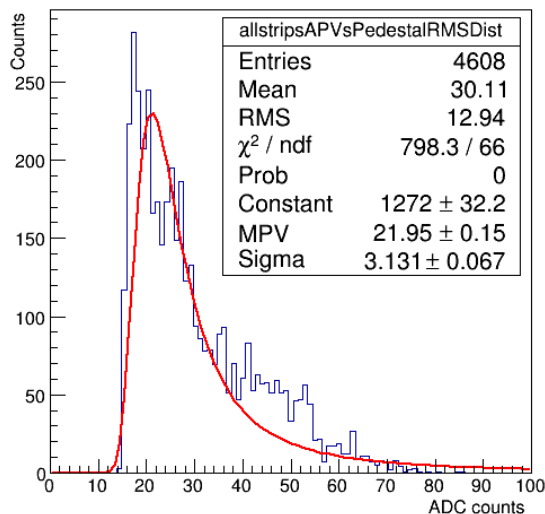
# APV25-SRS: RMS noise vs. nb of apv25 time sample

## APV25-SRS noise on PRad GEM (Nov 2015)

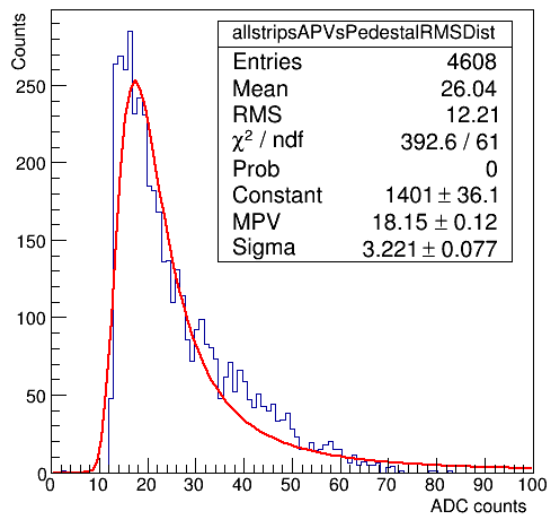
- Data taken with 6 time samples
- Pedestal noise calculated using 1, 3, 6 time samples
- **No Common mode correction before computing pedestals**

**No Common mode correction**

APV25 pedestal RMS with 1 time sample



APV25 pedestal RMS with 3 time samples



APV25 pedestal RMS with 6 time samples

