

Hadron Production Generators: Progress

Rakitha S. Beminiwattha

Department of Physics, Syracuse University

January 12th, 2016

Outline

Hadron Background

Comparison with GEANT4

How to Proceed...

Issues with Wiser Generator

- ▶ The kinematics regions compatible with the wiser fit do not include all the phase-space of SoLID acceptance.
- ▶ The validity of the Wiser fit is checked using different data set obtained from SLAC and published in the reference [1] (Boyarski et. al.)

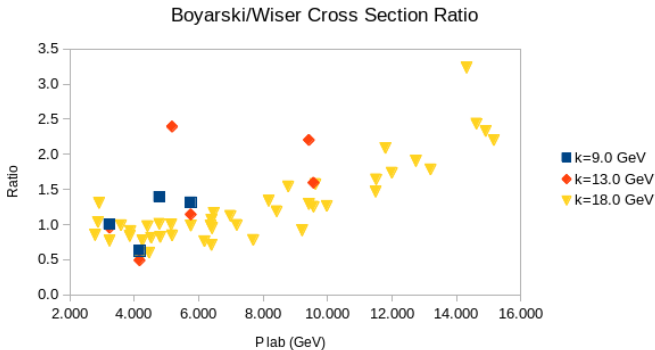


Figure: Cross section ratio for all transverse momentum

Hall D Photo-Production Generator

- ▶ Hall D generator uses fits to various experimental data and SAID partial-wave analysis fits to generate photo-production cross sections for photon energies below 3 GeV
- ▶ It uses modified version of PYTHIA for photon energies above 3 GeV
 - ▶ Hall D generator support from Eugene Chudekov and Mark Ito

Following $\gamma + p^+$ reactions considered for photon energies below 11 GeV

Process	Fraction of Events	Energy Range
PYTHIA	13	$3.00 < E < 10.00 \text{ GeV}$
$p^+ + \pi^0$	25	$0.15 < E < 3.00 \text{ GeV}$
$n + \pi^+$	33	
$p^+ + \pi^+ + \pi^-$ (<i>non-res.</i>)	4	
$p^+ + \rho^0$	3	
$\Delta^{++} + \pi^-$	7	
$p^+ + \pi^0 + \pi^0$	2	
$n + \pi^+ + \pi^0$	9	
$p^+ + \eta^0$	1	
$p^+ + \pi^+ + \pi^- + \pi^0$	3	
$n + \pi^+ + \pi^+ + \pi^-$	1	

Electro-Production with Hall-D Generator

- ▶ Photon energy is sampled using electro-production cross section weighted distribution
 - ▶ Where the total cross section is the sum of real (Bremsstrahlung) and virtual (EPA) contributions
- ▶ 11 GeV electron beam ($50 \mu\text{A}$) is incident into a 40 cm hydrogen target

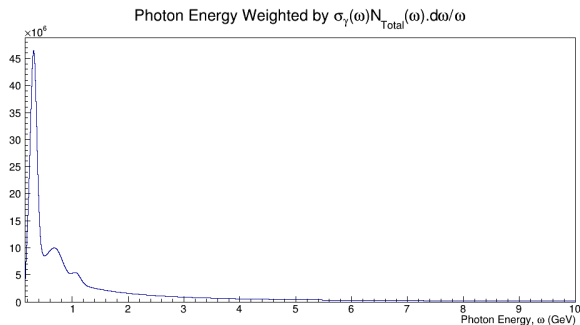


Figure: Hall D generator now samples the photon energy using electro-production cross section weighted distribution

Cross Sections from Proton Target

Table: Using Geant4

Mom. Range (GeV)	π^0		π^-		π^+	
	xs (mb)	Rate (MHz)	xs (mb)	Rate (MHz)	xs (mb)	Rate (MHz)
0 - 1	27.92	14922.27	12.39	6621.69	35.18	18801.05
1 - 2	3.25	1735.00	2.22	1185.79	2.70	1441.67
2 - 3	1.13	602.26	0.79	421.27	0.71	380.70
3 - 4	0.53	280.84	0.36	190.35	0.30	159.15
4 - 5	0.34	180.99	0.16	87.37	0.12	65.53
5 - 10	0.32	171.63	0.14	74.89	0.12	62.41
Total	33.48	17892.99	16.06	8581.36	39.13	20910.51

Table: Using Hall D Generator

Mom. Range (GeV)	π^0		π^-		π^+	
	xs (mb)	Rate (MHz)	xs (mb)	Rate (MHz)	xs (mb)	Rate (MHz)
0 - 1	23.45	12532.33	11.50	6145.88	33.47	17888.18
1 - 2	2.18	1164.50	2.36	1258.96	3.10	1654.65
2 - 3	0.64	341.37	0.81	432.42	0.87	466.53
3 - 4	0.24	127.00	0.36	192.33	0.35	186.56
4 - 5	0.10	54.58	0.17	90.26	0.17	92.10
5 - 10	0.07	37.26	0.15	81.08	0.15	80.82
Total	26.68	14257.04	15.35	8200.93	38.11	20368.84

- ▶ G4 $\sigma(p)$ for π^0 is about 30% larger

Pion Distribution from Proton Target

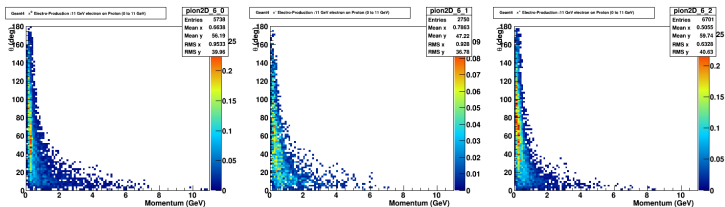


Figure: Using GEANT4

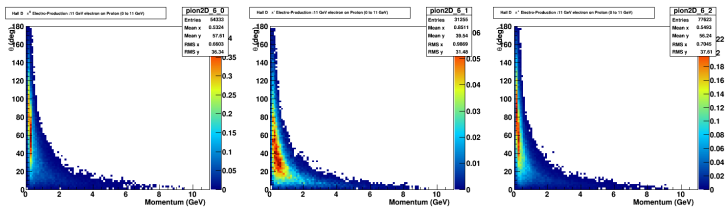


Figure: Using Hall D

Deuterium Target using Hall D Generator

- ▶ Hall D generator only has proton cross section information
- ▶ Assumed isospin symmetry and used proton target events generated by hall D generator
 - ▶ Isospin symmetric deuterium cross sections using proton pion cross sections

$$\sigma(A)_{\pi^0} = Z \cdot \sigma_{\pi^0} + N \cdot \sigma_{\pi^0}$$

$$\sigma(A)_{\pi^\pm} = Z \cdot \sigma_{\pi^\pm} + N \cdot \sigma_{\pi^\pm}$$

In Wisser generator, $\sigma_{\pi^0} = \frac{\sigma_{\pi^+} + \sigma_{\pi^-}}{2}$

Table: Total Deuterium xs for $\theta < 90^\circ$ deg

Pion Type	Hall D vs. G4 agreement			
	Wisser xs (mb)	Hall D xs (mb)	Geant4 xs (mb)	(%)
π^0	189.7	43.0	84.8	-97
π^-	191.6	44.9	39.5	12
π^+	192.7	44.9	38.7	14

Cross Sections from Deuterium Target

Table: Using Geant4

Mom. Range (GeV)	π^0		π^-		π^+	
	xs (mb)	Rate (MHz)	xs (mb)	Rate (MHz)	xs (mb)	Rate (MHz)
0 - 1	79.40	50501.13	35.40	22514.30	36.15	22994.82
1 - 2	6.87	4371.82	5.81	3694.67	5.20	3304.61
2 - 3	2.25	1429.19	1.67	1064.09	1.31	833.17
3 - 4	1.21	770.76	0.77	489.92	0.53	333.89
4 - 5	0.65	411.91	0.34	218.44	0.28	174.75
5 - 10	0.97	614.74	0.34	215.31	0.25	159.15
Total	91.34	58099.55	44.33	28196.73	43.71	27800.39

Table: Using Hall D Generator

Mom. Range (GeV)	π^0		π^-		π^+	
	xs (mb)	Rate (MHz)	xs (mb)	Rate (MHz)	xs (mb)	Rate (MHz)
0 - 1	46.90	29830.49	44.97	28605.28	44.97	28605.28
1 - 2	4.36	2771.83	5.45	3467.62	5.45	3467.62
2 - 3	1.28	812.56	1.68	1069.88	1.68	1069.88
3 - 4	0.48	302.29	0.71	450.94	0.71	450.94
4 - 5	0.20	129.91	0.34	217.04	0.34	217.04
5 - 10	0.14	88.69	0.30	192.68	0.30	192.68
Total	53.35	33936.44	53.46	34003.77	53.46	34003.77

- ▶ From G4: $\sigma(D)$ for π^0 is about 34% larger wrt isospin symmetric $\sigma(2p)$
- ▶ From G4: $\sigma(D)$ for π^\pm is about 25% smaller wrt isospin symmetric $\sigma(2p)$

Pion Distribution from Deuterium Target

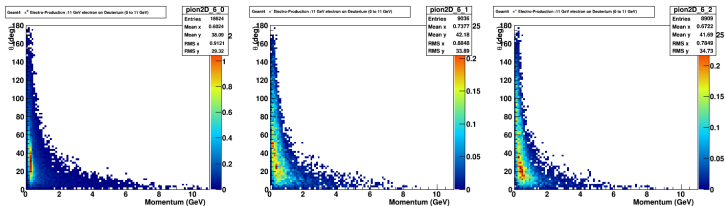


Figure: Using GEANT4

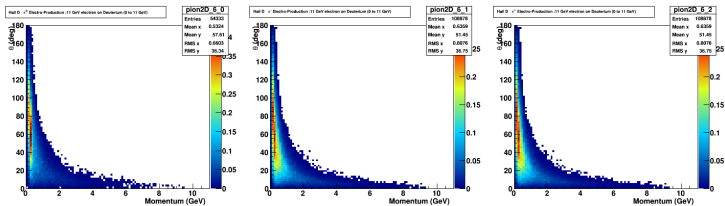


Figure: Using Hall D

Pion Angular Distribution from Deuterium Target

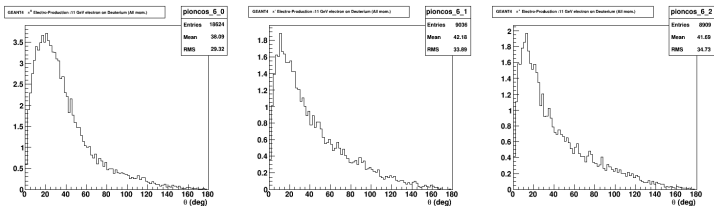


Figure: Using GEANT4

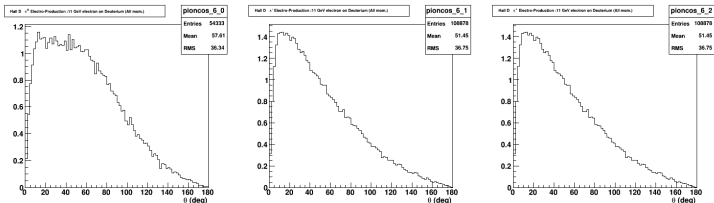


Figure: Using Hall D

Cross Sections from Deuterium Target

Mom. Range (GeV)	Hall D π^0		Geant4 π^0	
	xs (mb)	Rate (MHz)	xs (mb)	Rate (MHz)
0.0 - 0.1	1.10	700.76	3.56	2262.36
0.1 - 0.2	10.57	6726.01	15.40	9792.09
0.2 - 0.3	15.22	9680.26	25.28	16079.91
0.3 - 0.4	7.18	4565.59	14.22	9046.30
0.4 - 0.5	4.05	2576.95	7.44	4730.68
0.5 - 0.6	2.85	1813.12	4.47	2845.90
0.6 - 0.7	2.00	1274.74	3.09	1965.92
0.7 - 0.8	1.63	1033.66	2.48	1578.97
0.8 - 0.9	1.22	773.22	1.91	1213.87
0.9 - 1.0	1.08	685.15	1.55	986.08

π^0 Distribution from Deuterium Target for $P < 1$ GeV

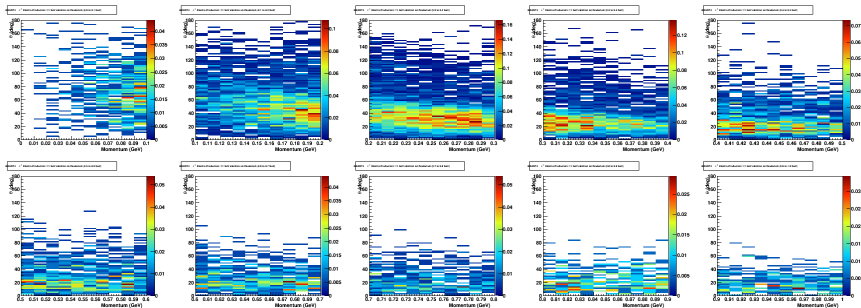


Figure: Using GEANT4

π^0 Distribution from Deuterium Target for $P < 1$ GeV

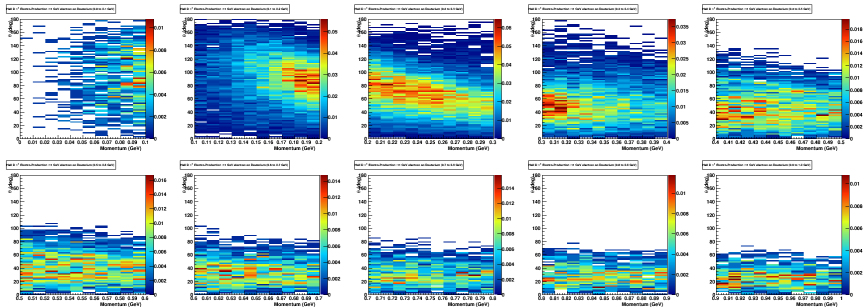


Figure: Using Hall D

π^0 Angular Distribution from Deuterium Target for $P < 1$ GeV

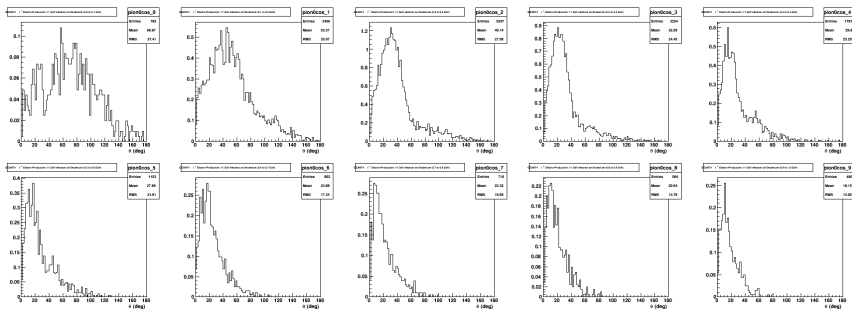


Figure: Using GEANT4

π^0 Angular Distribution from Deuterium Target for $P < 1$ GeV

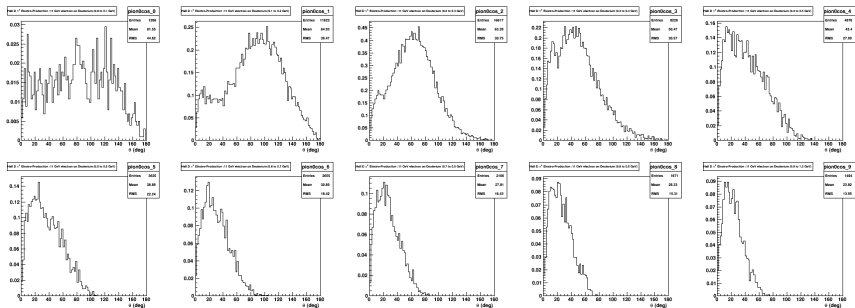


Figure: Using Hall D

Neutral π^0 Production from Deuterium : Data

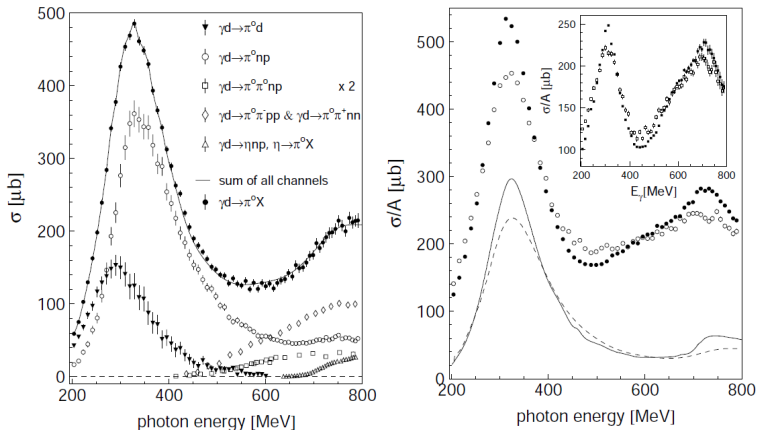


Figure: Left: Neutral pion photoproduction channels and sum of all exclusive channels.

Right: Comparison of total photoabsorption (proton : full circle, deuteron open circle) and neutral meson production (proton : solid curve, deuteron dashed curve) data.

Insert: difference between total photoabsorption and neutral meson production (proton : filled square, deuteron open square) [2]

Neutral π^0 Production from Deuterium : Data

- ▶ Photoproduction of neutral pions from the deuteron for incident photon energies from 200 MeV to 792 MeV with the TAPS detector at the Mainz MAMI accelerator.
- ▶ Most of the discrepancy between proton and deuteron cross sections comes from the neutral channels
- ▶ The difference between total photoabsorption and neutral channels cross section represent the sum of $\pi^\pm, \pi^+\pi^-$, and $\pi^0\pi^\pm$ and should be very similar for proton and deuteron
- ▶ Hence cross section ratio of $p(\gamma, \pi^+)n, p(\gamma, \pi^0\pi^+)n, p(\gamma, \pi^+\pi^-)p$ to $n(\gamma, \pi^-)p, n(\gamma, \pi^0\pi^-)p, n(\gamma, \pi^+\pi^-)n$ must be close to unity
- ▶ Therefore based on this data analysis isospin assumption for deuterium is sufficient to estimate SoLID hadron background

How to Proceed...

- ▶ Preliminary claim : Isospin claim agrees fairly well with data
 - ▶ About 10 – 15% agreement with data for total deuterium cross section with isospin symmetry assumption
- ▶ GEANT4 Excellent agreement with Proton target (except π^0) but...
 - ▶ Why GEANT4 hadron productions from deuterium deviates from isospin symmetry assumption?
 - ▶ Bug in the GEANT4 hadron productions code?
 - ▶ Issues with model prediction for nuclear effects like FSI within GEANT4
- ▶ Implement deuterium (and ${}^3\text{He}$) properly into Hall D generator : We have a complete hadron background generator for SoLID (more work! and do we really have to do it?)
 - ▶ Using SAID and MAID partial-wave analysis models
 - ▶ Hall B, MAMI data/fits for deuterium (and ${}^3\text{He}$)
- ▶ Once above issues are resolved, SoLID pion asymmetry estimation is also a priority

Wiser Generator

- ▶ Electro and photo production cross-sections derived using Wiser fits are based on SLAC $\gamma N \rightarrow X$
 - ▶ SLAC bremsstrahlung beam at endpoint energies of 5, 7, 9, 11, 15 and 19 GeV
 - ▶ Data were taken for 1 to 8 GeV hadrons with P_T values from 0.5 GeV to 2.5 GeV
- ▶ The fits return the invariant cross section for monochromatic photon beam : $E' \frac{d^3\sigma}{dp'^3}$
- ▶ Where (E', p') is the hadron momentum and E_γ is the incident photon energy
- ▶ Wiser fits are available for π^\pm, K^\pm, P^+ and \bar{P}^- (π^0 cross section is the average of π^\pm cross sections)

$$E' \frac{d^3\sigma}{dp'^3} = \left(a_1 + \frac{a_2}{\sqrt{s}} \cdot \left(1 - x_R + \frac{a_3^2}{s} \right)^{a_4} \cdot e^{a_5 \cdot M_L} \cdot e^{a_6 \cdot P_T^2/E} \right)$$

where P_T is the transverse momentum of the hadron and a_i are fit parameters.

Wiser Generator

Photo-Production:

$$\sigma_i = \int d\omega N_\gamma(\omega) \frac{d\sigma_i^\gamma(\omega)}{d\omega}$$

$$N_\gamma(\omega) = \frac{d}{X_0} \frac{\left(\frac{4}{3} - \frac{4\omega}{3E} + \frac{4\omega^2}{3E^2}\right)}{\omega}$$

Electro-Production:

$$\sigma_i = \int d\omega N_{\text{EPA}}(E_{\text{beam}}, \omega) \frac{d\sigma_i^\gamma(\omega)}{dk}$$

$$N_{\text{EPA}}(E_{\text{beam}}, \omega) \simeq \ln\left(\frac{E_{\text{beam}}}{m_e}\right) \frac{\alpha}{\pi} \frac{1 + \left(1 - \frac{\omega}{E_{\text{beam}}}\right)^2}{\frac{\omega}{E_{\text{beam}}}}$$

Where ω is the photon energy and E_{beam} is the electron beam energy

Wiser Generator to Get Total Photo-Production Cross Sections

- ▶ Wiser fits for electron production cross-sections are based on SLAC $\gamma N \rightarrow X$
- ▶ The fits return the invariant cross section for monochromatic photon beam : $E' \frac{d^3\sigma}{dp'^3}$
- ▶ Where (E', p') is the hadron momentum and E_γ is the incident photon energy
- ▶ The total Photo-Production cross section for a monochromatic photon beam for i^{th} type interaction,

$$\sigma_i(E_\gamma) = \int_{\text{phase-space}} E' \frac{d^3\sigma}{dp'^3} dp'^3$$

- ▶ Where subscript i is,

1. $i = 0, 1 : \pi^\pm$
2. $i = 2, 3 : K^\pm$
3. $i = 4, 5 : P^+$ and \bar{P}^-

π^0 cross section is the average of π^\pm cross sections

From Photo-Production to Electro-Production

- ▶ Hadron Production can take place either from real bremsstrahlung photon radiated in the target or from virtual photon interaction approximated by Equivalent Photon Radiator (EPA) approximation
 - ▶ Bremsstrahlung contribution is implemented following PDG-2012 [3] and [4]
 - ▶ EPA contribution is implemented according to the reference [5]
- ▶ Next few slides will summarize the electro-production implementation

Electro-Production with Equivalent Photon Approximation

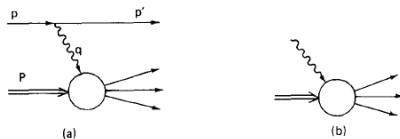


Figure: Electro-Production (a) and Photo-Absorption (b) equivalency [5]

The electro-production cross section for electron energy E using Equivalent Photon Approximation (EPA),

$$d\sigma = \sigma_{\gamma}(\omega) \cdot dn(\omega)$$

$$dn(\omega) = \int_{q_{min}^2}^{q_{max}^2} dn(\omega, q^2) = N_{EPA}(\omega) \frac{d\omega}{\omega}$$

where $\sigma_{\gamma}(\omega)$ is photo-production cross section at photon energy ω and,

$$N_{EPA}(\omega) = \frac{\alpha}{\pi} \left[\left(1 - \frac{\omega}{E} + \frac{\omega^2}{E^2}\right) \ln \frac{q_{max}^2}{q_{min}^2} - \left(1 - \frac{\omega}{2E}\right)^2 \ln \frac{(\omega^2 + q_{max}^2)}{(\omega^2 + q_{min}^2)} - \frac{m_e^2 \omega^2}{E^2 q_{min}^2} \left(1 - \frac{q_{min}^2}{q_{max}^2}\right) \right]$$

Electro-Production with Radiated Real Photons

The Bremsstrahlung cross section for electron of energy E traveling inside a material [3]

$$\frac{d\sigma}{d\omega} = \frac{A}{X_0 N_A \omega} \left(\frac{4}{3} - \frac{4\omega}{3E} + \frac{4\omega^2}{3E^2} \right)$$

The electro-production cross section due to Bremsstrahlung photons,

$$d\sigma = \sigma_\gamma(\omega) \cdot N_{BREMS}(\omega) \frac{d\omega}{\omega}$$

$$N_{BREMS}(\omega) = \frac{d}{X_0} \left(\frac{4}{3} - \frac{4\omega}{3E} + \frac{4\omega^2}{3E^2} \right)$$

Where X_0 is the radiation length and $d = \rho \cdot t$ where ρ is target density and t is target thickness

Photo-Production with Radiated Real Photons

The Bremsstrahlung cross section for electron of energy E traveling inside a material [3]

$$\frac{d\sigma}{d\omega} = \frac{A}{X_0 N_A \omega} \left(\frac{4}{3} - \frac{4\omega}{3E} + \frac{4\omega^2}{3E^2} \right)$$

The electro-production cross section due to Bremsstrahlung photons,

$$d\sigma = \sigma_\gamma(\omega) \cdot N_\gamma(\omega) \frac{d\omega}{\omega}$$

$$N_\gamma(\omega) = \frac{d}{X_0} \left(\frac{4}{3} - \frac{4\omega}{3E} + \frac{4\omega^2}{3E^2} \right)$$

Where X_0 is the radiation length and $d = \rho \cdot t$ where ρ is target density and t is target thickness

EPA Photon Spectrum

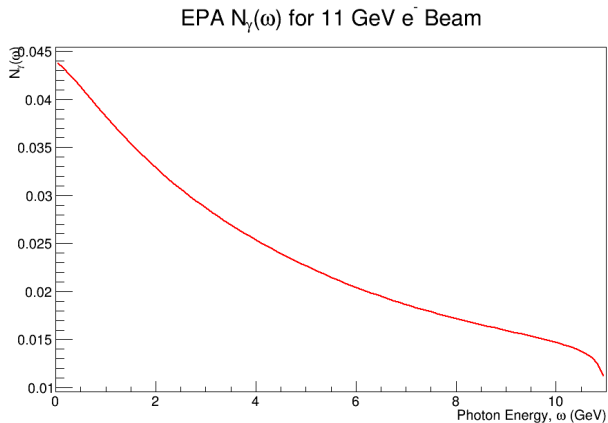


Figure: Photon Spectrum $N_{EPA}(\omega)$

Bremsstrahlung Photon Spectrum

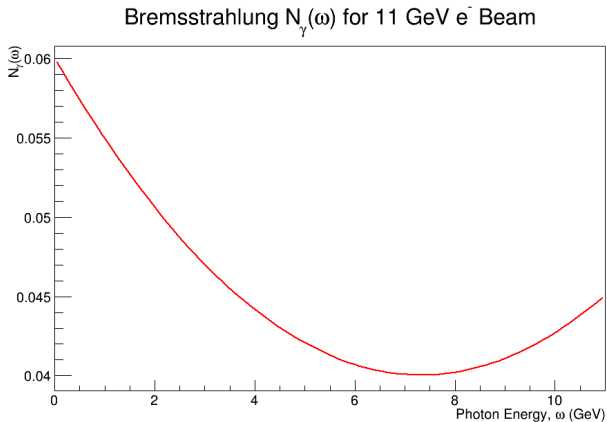


Figure: Photon Spectrum $N_{BREMS}(\omega)$

Complete Photon Spectrum

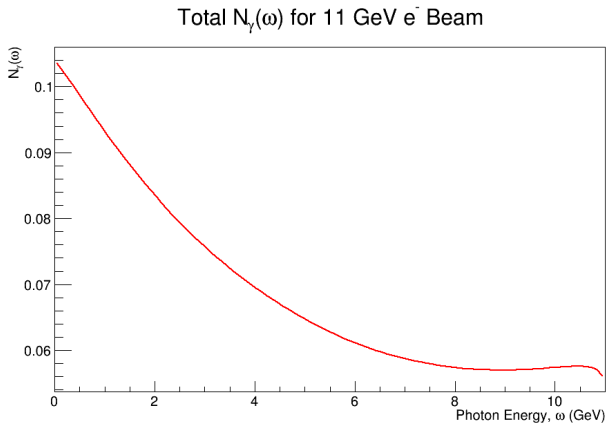


Figure: Photon Spectrum $N_{EPA}(\omega) + N_{BREMS}(\omega)$ for electron incident on a proton target

Compare Hall D vs. PDG

- ▶ Compared total cross sections from Hall D event generator and PDG photo-production cross sections on proton
- ▶ For γ momentum less than 3 GeV it uses combination of different models including SAID
- ▶ For γ momentum greater than 3 GeV it uses PYTHIA

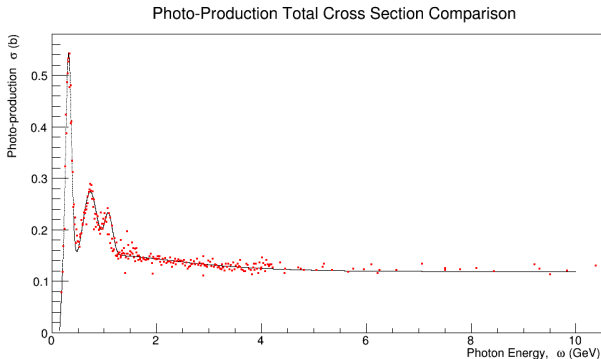


Figure: Black line : Hall D genertor, Red points : PDG

Hadron Production in GEANT4

- ▶ The hadron interactions (say for photo or electro production) in Geant4 are implemented in a two fold method
- ▶ Geant4 determines the photonuclear or electronuclear interaction going to take place based on the total cross section
 - ▶ For photoproduction cross section, it uses a fit based on models and data.
 - ▶ For electroproduction Geant4 uses EPA approximation
- ▶ The next step is to simulate the fragmentation of the excited hadronic system in nuclear matter into set of final hadrons
- ▶ In earlier versions they used the CHIPS (Chiral Invariant Phase Space) model
- ▶ Now it's either Quark Gluon String model + Bertini cascade model (QGSP_BERT) or FTF model which uses a different string model with Bertini cascade model (FTFP_BERT)

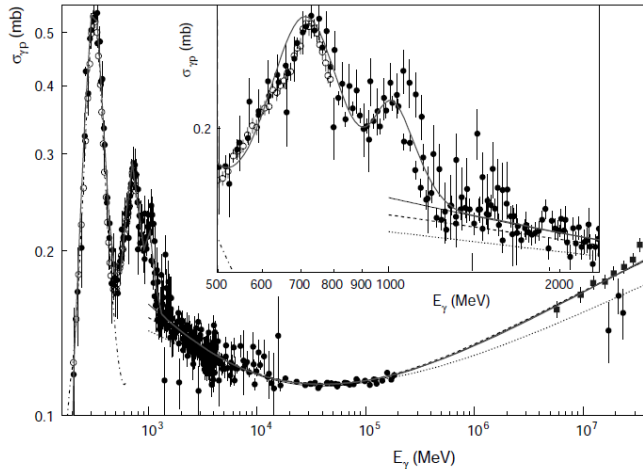


Figure: The thick solid line is the resulting GEANT4 approximation [6]

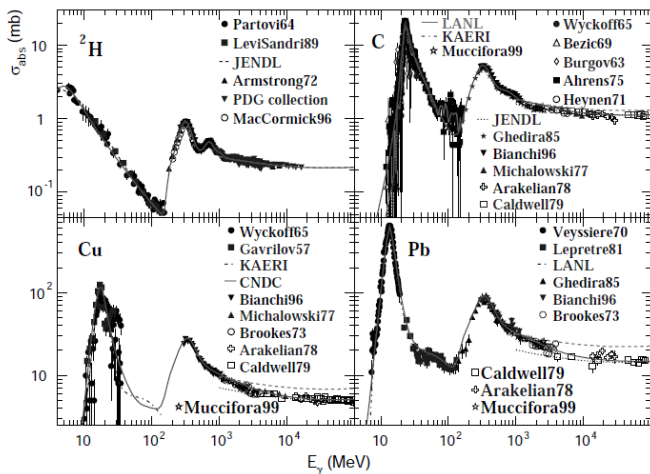


Figure: The thick solid line is the resulting GEANT4 approximation [6]

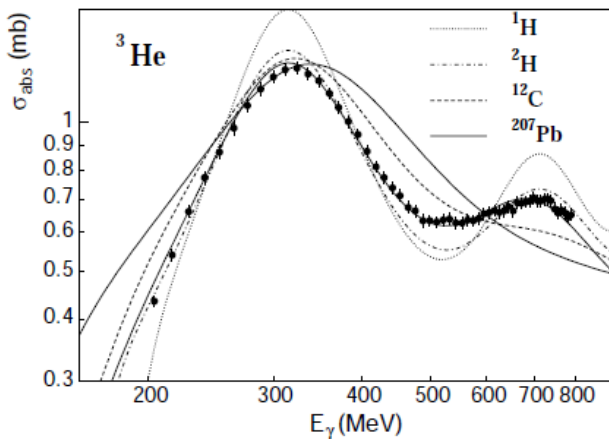







Figure: Thick line the thick solid line is the GEANT4 approximation for ^3He . For comparison the approximation curves for ^1H (dotted line), ^2H (dash-dotted line), C (dashed line), and Pb (thin solid line) are also shown [6]

Excess π^0 photo-production on Deuterium in SAMPLE experiment

- ▶ Coherent π^0 production ($2H(\gamma, \pi^0)2H$) in deuterium around the pion threshold
 - ▶ Directly from a single nucleon (direct process)
 - ▶ From a two-step mechanism where first a charged pion is produced on a one nucleon and then charge exchanges to a π^0 on a second nucleon \rightarrow rescattering mechanism
- ▶ Around the pion threshold rescattering mechanism increases the π^0 cross section significantly and dominates
 - ▶ Then as the energy of the incident photon increases the rescattering terms are still important
- ▶ Discussed in the J.C Bergstrom, et. al. paper and they refer to the paper J. H Koch and R. M. Woloshyn, Phys. Rev. C 16, 1968

-  A. M. Boyarski, D. H. Coward, S. D. Ecklund, B. Richter, D. J. Sherden, R. H. Siemann, and C. K. Sinclair.
Inclusive photoproduction of charged particles in the forward hemisphere.
Phys. Rev. D, 14:1733–1771, Oct 1976.
-  B. Krusche, J. Ahrens, R. Beck, M. Fuchs, S.J. Hall, F. Hrter, J.D. Kellie, V. Metag, M. Rbig-Landau, and H. Strher.
Single and double π^0 photoproduction from the deuteron.
The European Physical Journal A - Hadrons and Nuclei, 6(3):309–324, 1999.
-  J. Beringer et al.
Review of particle physics.
Phys. Rev. D, 86:010001, 2012.
-  Yung-Su Tsai.
Pair production and bremsstrahlung of charged leptons.
Rev. Mod. Phys., 46:815–851, Oct 1974.
-  V.M. Budnev, I.F. Ginzburg, G.V. Meledin, and V.G. Serbo.
The two-photon particle production mechanism. physical problems.
applications. equivalent photon approximation.
Physics Reports, 15(4):181 – 282, 1975.



M.V. Kossov.

Approximation of photonuclear interaction cross-sections.

Eur. Phys. J. A, 14(3):377–392, 2002.