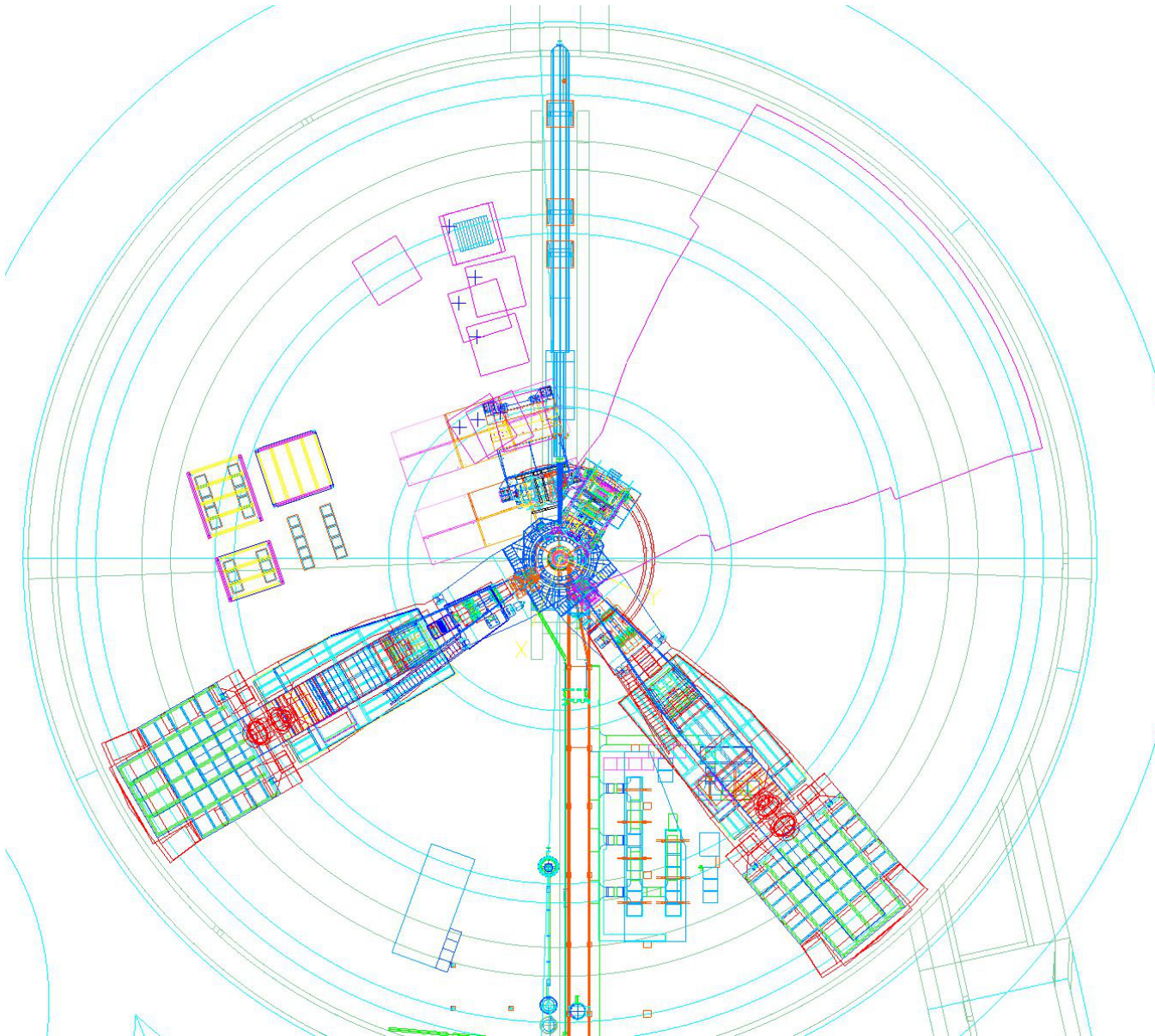


# Hall A floor plans per Al Gavalya

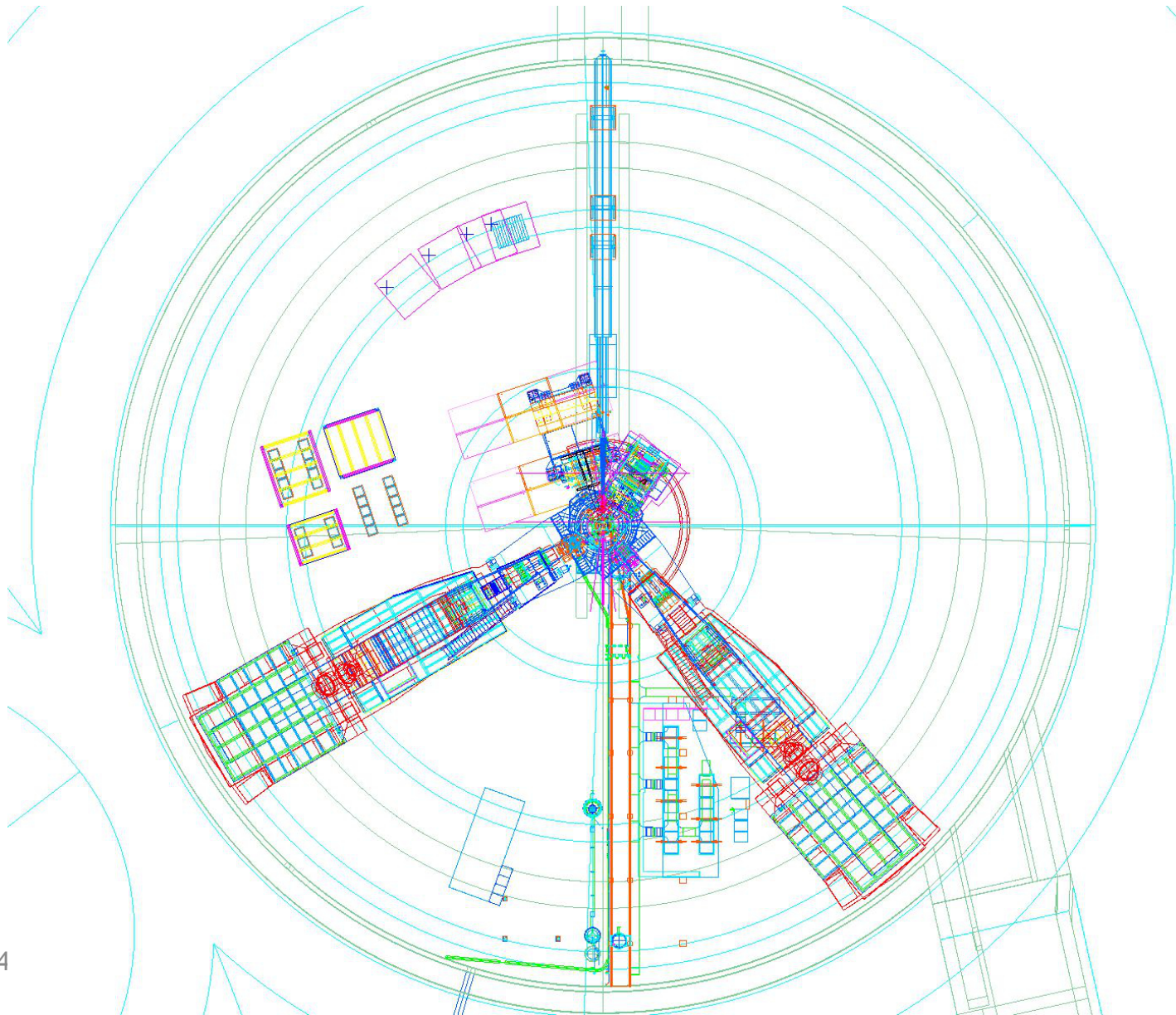
We need to decide on  
location of the electronic bunker

# GMn experiment

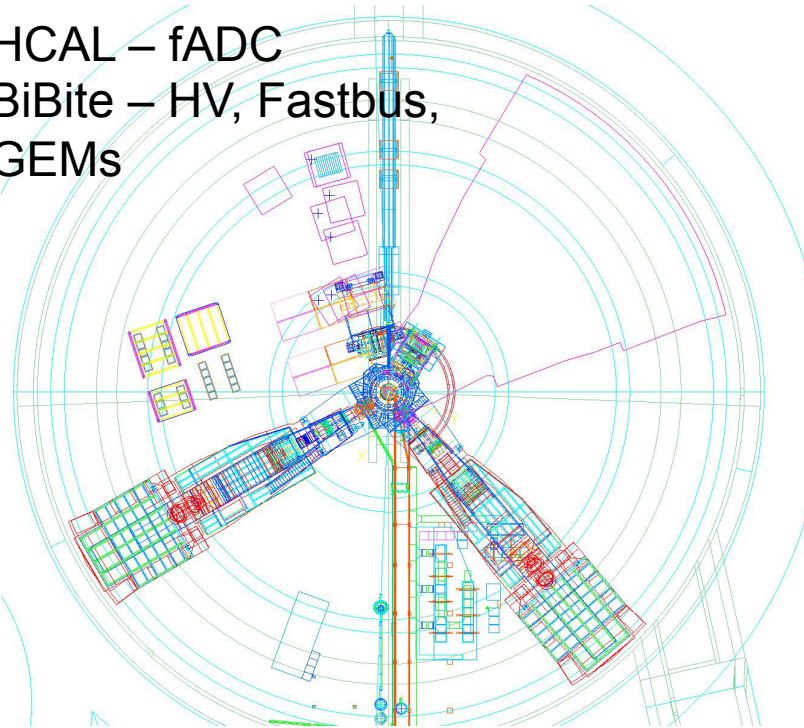


10/14/14

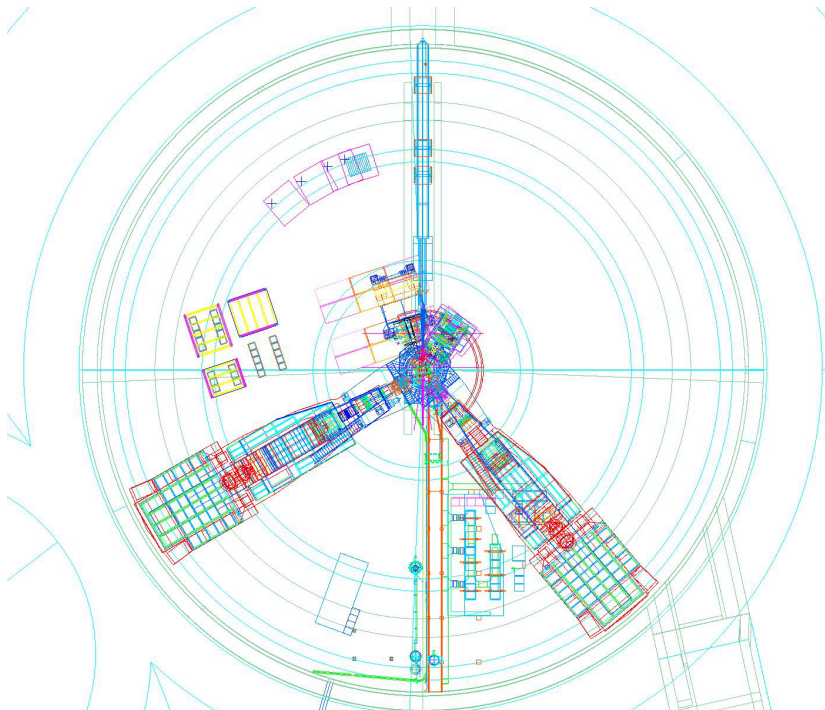
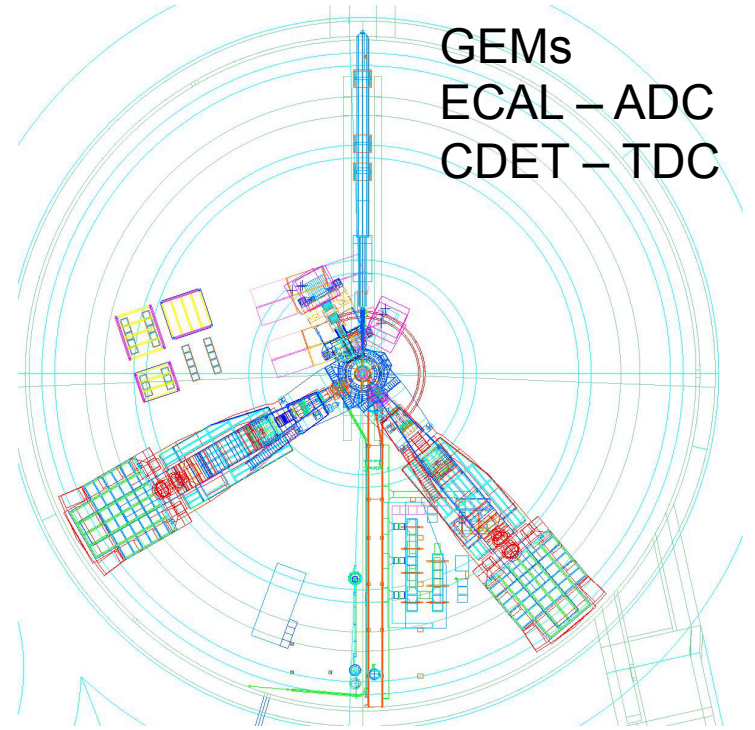
# GEn experiment



HCAL – fADC  
BiBite – HV, Fastbus,  
GEMs



GEMs  
ECAL – ADC  
CDET – TDC



1. GEM readout need be very close
2. HV crates could be 100' away
3. 1881m ADCs could be 100' away
4. Could we use HRSs SH?

# GEp experiment

