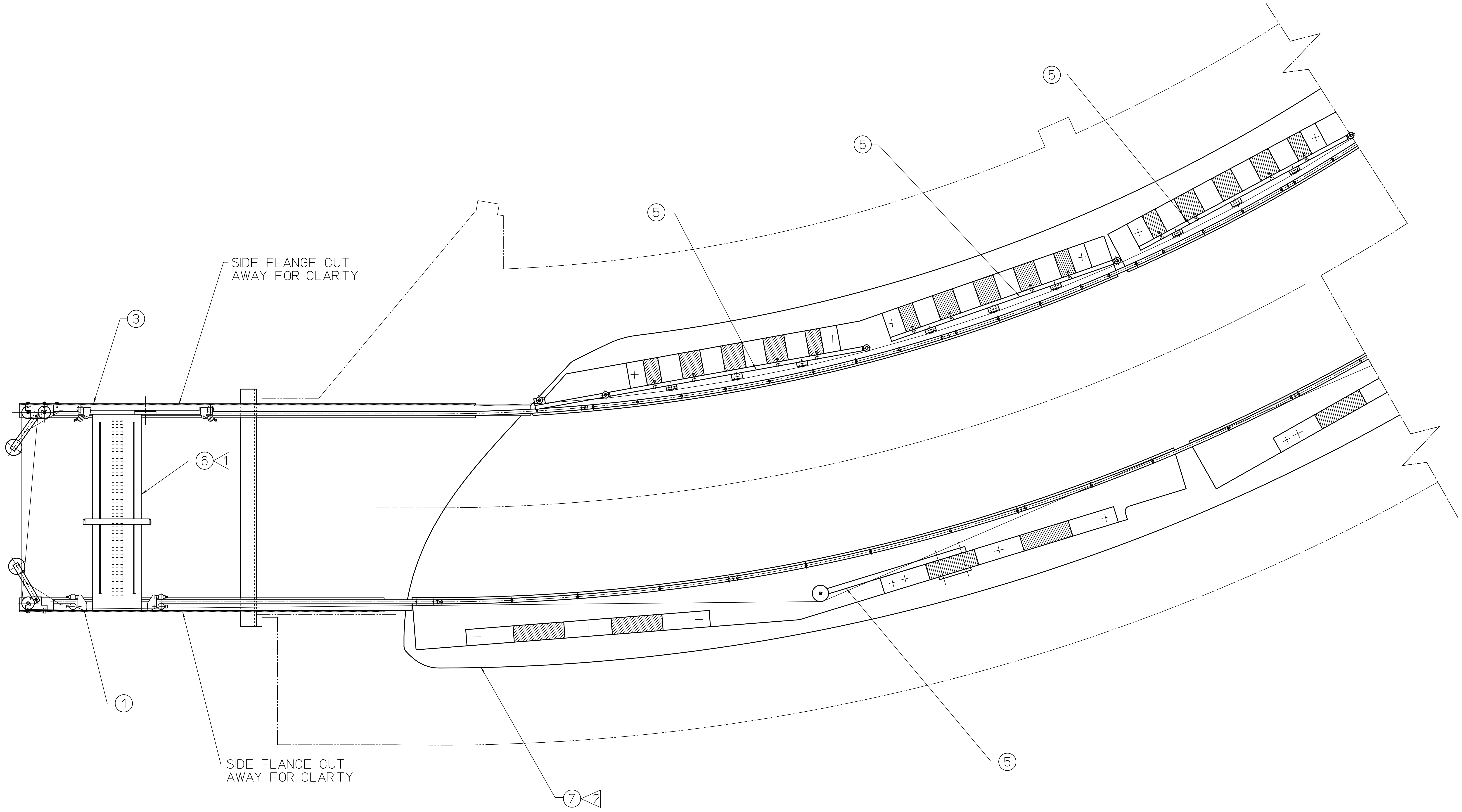


REVISIONS				
ZONE	REV.	DESCRIPTION	DATE	APPROVED
	A	CHANGED DESCRIPTION ON ITEMS, #2, #3, #4, IN PARTS LIST.	5/17/96	S. ESP



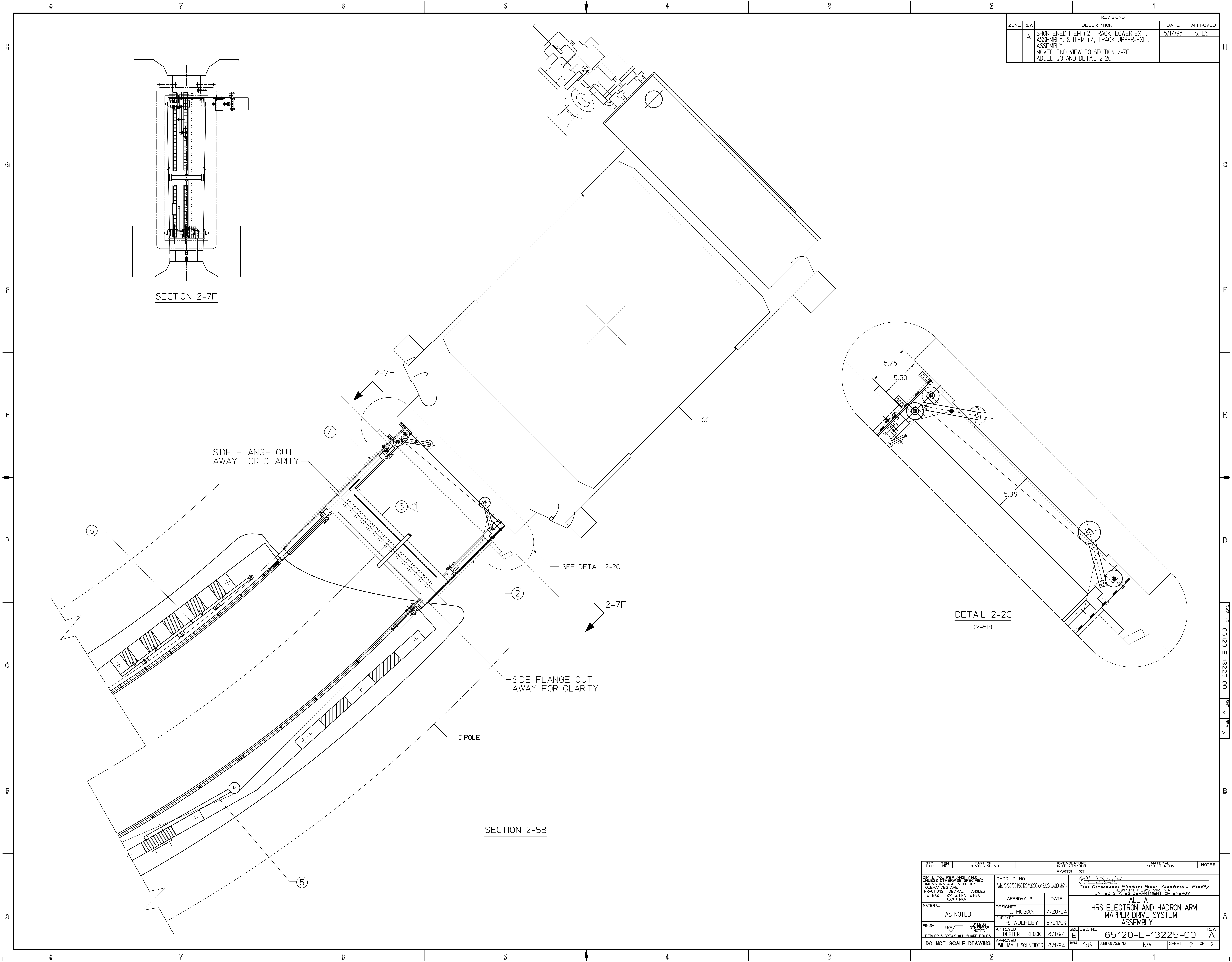
GENERAL NOTES:

- ▷ REFERENCE 'HRS DIPOLE, MAGNET MAPPER TRUCK, ASSEMBLY' DWG. NO. 65120-D-13222-00 REV. - FOR ADDITIONAL INFORMATION APPLICABLE TO THIS DRAWING.
- ▷ REFERENCE 'HRS DIPOLE IRON, POLE ASSEMBLY' DWG. NO. 65120-D-13221-00 REV. G FOR ADDITIONAL INFORMATION APPLICABLE TO THIS DRAWING.

QTY	ITEM	PART OR IDENTIFYING NO.	NOMENCLATURE OR DESCRIPTION	MATERIAL SPECIFICATION	NOTES
	7	65120-D-13221-00	POLE ASSEMBLY		
	6	65120-D-13222-00	MAGNET MAPPER TRUCK ASSEMBLY		
	5	65120-D-13225-22	ROLLER PLATE ASSEMBLY		
	4	65120-E-13225-12	TRACK, UPPER-EXIT, ASSEMBLY		
	3	65120-E-13225-11	TRACK, UPPER-ENTRANCE, ASSEMBLY		
	2	65120-E-13225-10	TRACK, LOWER-EXIT, ASSEMBLY		
	1	65120-E-13225-09	TRACK, LOWER-ENTRANCE, ASSEMBLY		

DIM & TOL PER ANSI Y14.5 UNLESS OTHERWISE SPECIFIED DIMENSIONS ARE IN INCHES TOLERANCES ARE: FRACTIONS DECIMAL ANGLES * 1/64 XX, # N/A * N/A XXX, # N/A		CADD ID. NO. '141W655565185:0013200.49225.dwg'		 The Continuous Electron Beam Accelerator Facility NEWPORT NEWS, VIRGINIA UNITED STATES DEPARTMENT OF ENERGY	
MATERIAL AS NOTED		DESIGNER J. HOGAN	DATE 7/20/94	HALL A HRS ELECTRON AND HADRON ARM MAPPER DRIVE SYSTEM ASSEMBLY	
FINISH N/A UNLESS OTHERWISE NOTED		CHECKED R. WOLFLEY	DATE 8/01/94		
DO NOT SCALE DRAWING		APPROVED DEXTER F. KLOCK	DATE 8/1/94		
		APPROVED WILLIAM J. SCHNEIDER	DATE 8/1/94	SIZE DWG. NO. E 65120-E-13225-00 REV. A	SHEET 1 OF 2

DWG NO. 65120-E-13225-00 SHEET 1 REV. A



REVISIONS				
ZONE	REV	DESCRIPTION	DATE	APPROVED
	A	SHORTENED ITEM #2, TRACK, LOWER-EXIT, ASSEMBLY, & ITEM #4, TRACK UPPER-EXIT, ASSEMBLY. MOVED END VIEW TO SECTION 2-7F. ADDED 03 AND DETAIL 2-2C.	5/17/96	S. ESP

SECTION 2-7F

SIDE FLANGE CUT AWAY FOR CLARITY

SEE DETAIL 2-2C

SIDE FLANGE CUT AWAY FOR CLARITY

DIPOLE

SECTION 2-5B

DETAIL 2-2C  
(2-5B)

QTY	ITEM	PART OR IDENTIFYING NO.	NOMENCLATURE OR DESCRIPTION	MATERIAL SPECIFICATION	NOTES
PARTS LIST					
DIM & TOL PER ANSI Y14.5 UNLESS OTHERWISE SPECIFIED DIMENSIONS ARE IN INCHES TOLERANCES ARE FRACTIONS DECIMAL ANGLES * 1/64 XX, # N/A # N/A XXX, # N/A		CADD ID. NO. /w/68585165101/1200.013225.dwg/42.1		 The Continuous Electron Beam Accelerator Facility NEWPORT NEWS, VIRGINIA UNITED STATES DEPARTMENT OF ENERGY	
MATERIAL AS NOTED		DESIGNER J. HOGAN	DATE 7/20/94	HALL A HRS ELECTRON AND HADRON ARM MAPPER DRIVE SYSTEM ASSEMBLY	
FINISH N/A UNLESS OTHERWISE NOTED DEBUR & BREAK ALL SHARP EDGES		CHECKED R. WOLFLEY	DATE 8/01/94	SIZE/DWG. NO. E	65120-E-13225-00
DO NOT SCALE DRAWING		APPROVED DEXTER F. KLOCK	DATE 8/1/94	SCALE 1:8	USED ON ASSY NO. N/A
		APPROVED WILLIAM J. SCHNEIDER	DATE 8/1/94	SHEET 2	OF 2

DWG NO. 65120-E-13225-00 SHEET 2 REV. A