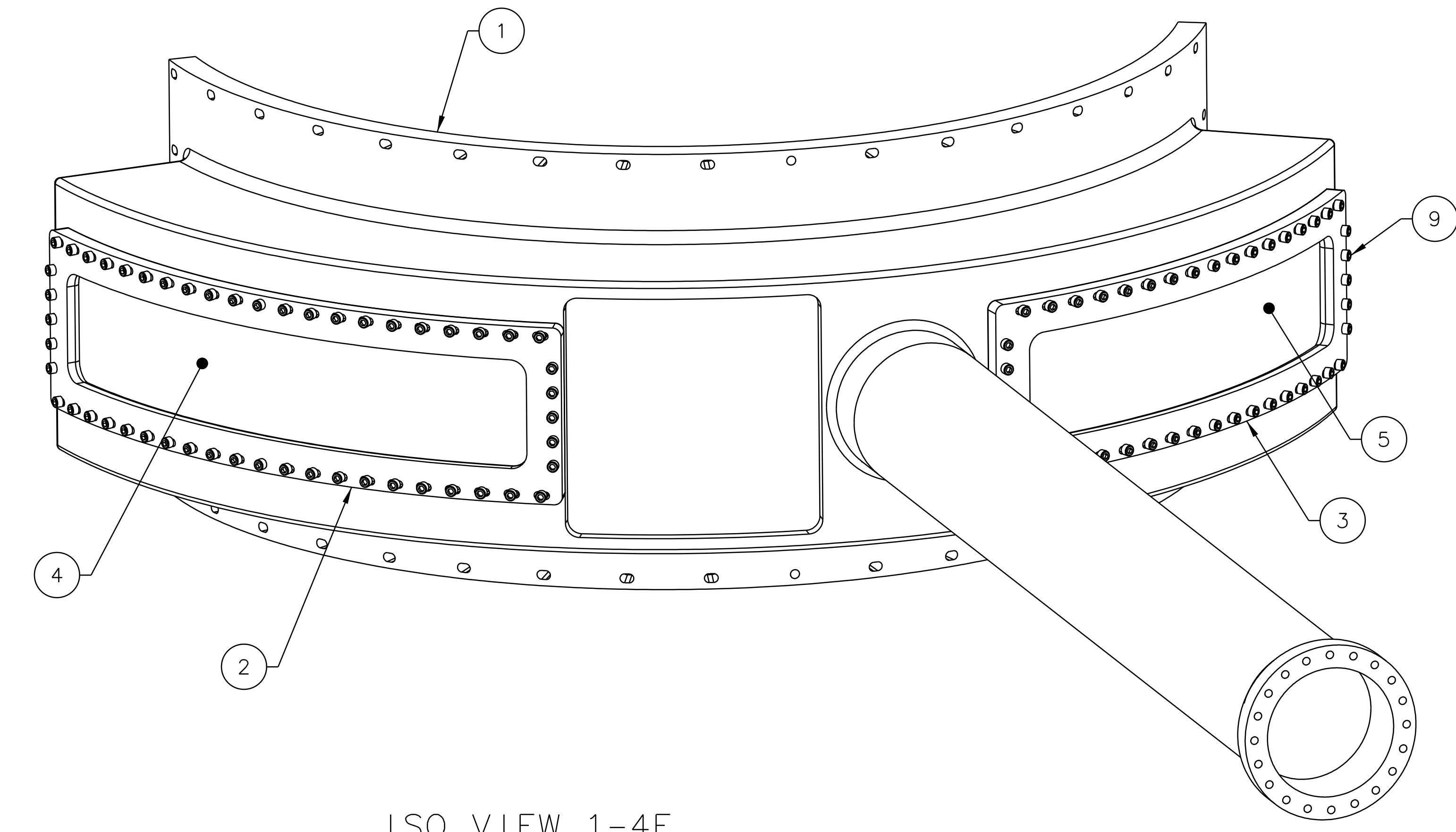
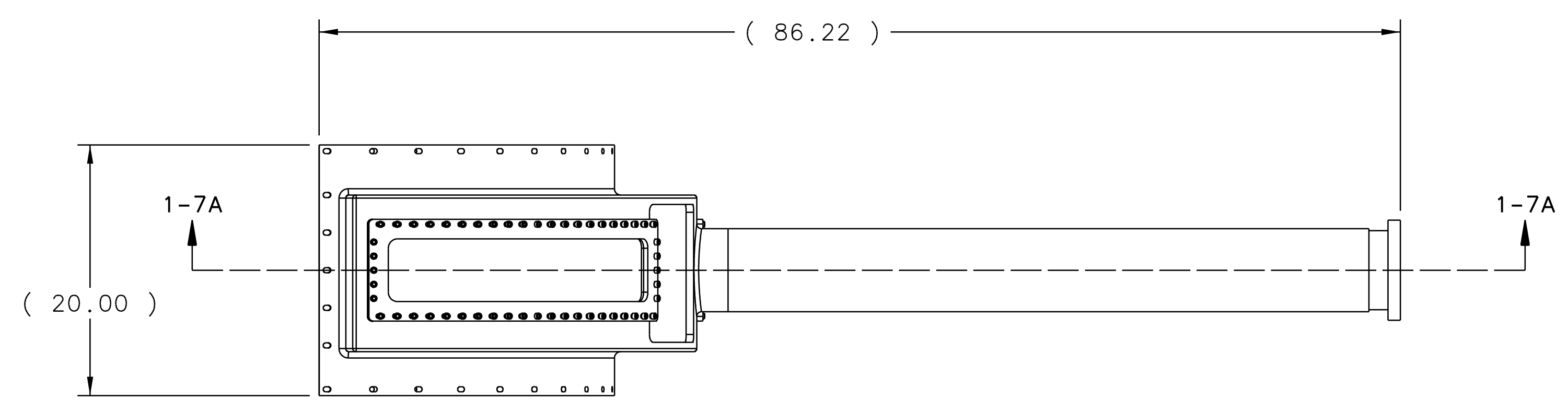


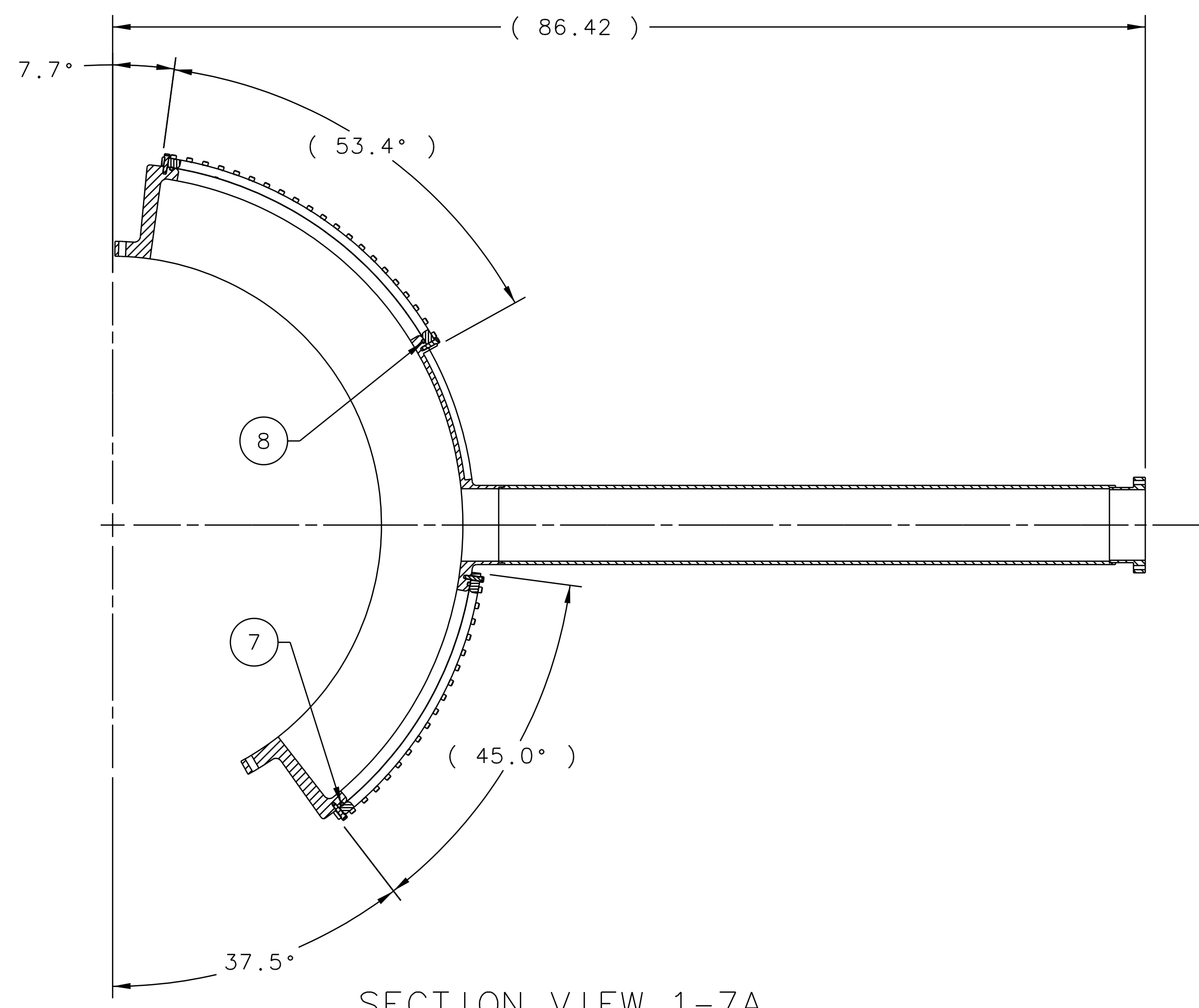
TOP VIEW 1-7F



ISO VIEW 1-4F
SCALE 1:4



LT SIDE VIEW 1-7D



SECTION VIEW 1-7A

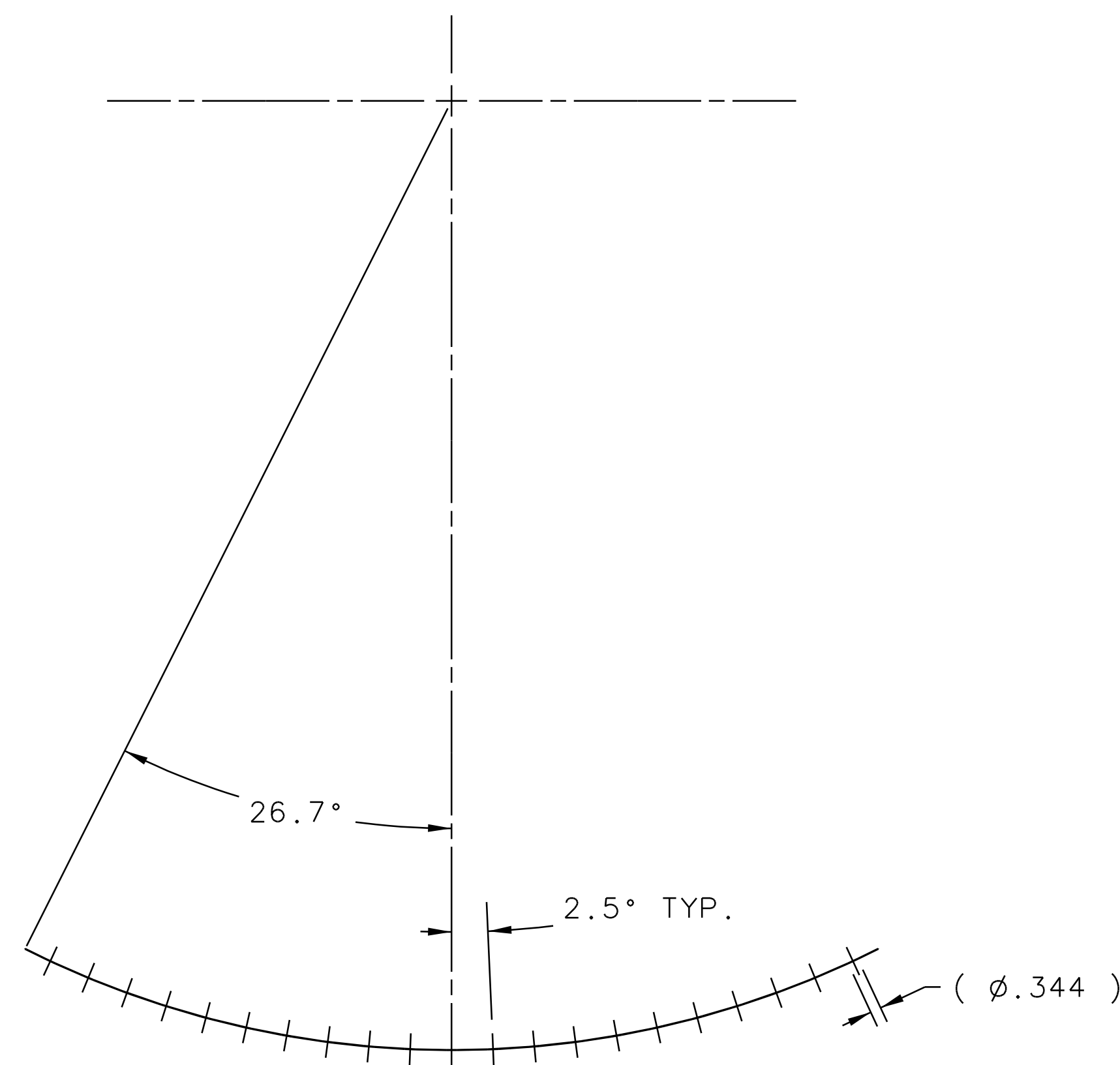
NOTES:

1. WEIGHT IS APPROXIMATELY 275 LBS.
2. PART TO BE CONDITIONED FOR SAFE HANDLING. REMOVE ALL BURRS AND SHARP EDGES.
3. SUB-ASSEMBLY HAS A VACUUM TIGHT SPECIFICATION OF 1×10^{-6} ATM CC/SEC, DUE TO THE UPPER ASSEMBLY HELIUM LEAK TEST REQUIREMENT.

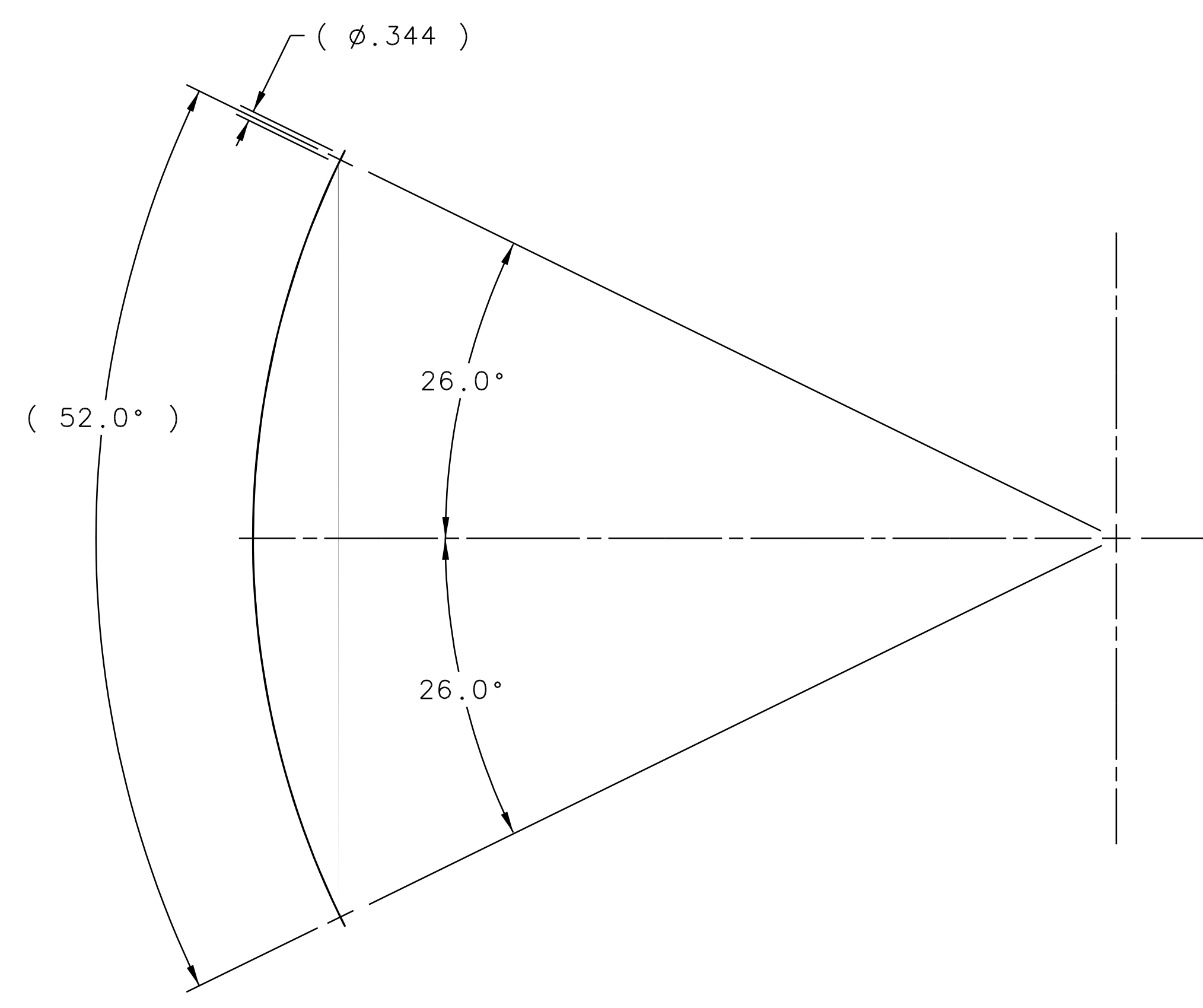
QTY	ITEM NO.	PART OR IDENTIFYING NO.	QUANTITY OR DESCRIPTION	MATERIAL SPECIFICATION	NOTES
96	9	McMASTER-CARR 92185A585	SHCS 5/16-18 X 1.25	316 STAINLESS STEEL	-
1	8	McMASTER-CARR 96505K25	O-RING - WINDOW FRAME BR WIDTH = .275" & LENGTH (54")	SILICONE CORD STOCK Durometer 70 A	-
1	7	McMASTER-CARR 96505K25	O-RING - WINDOW FRAME BL WIDTH = .275" & LENGTH (63")	SILICONE CORD STOCK Durometer 70 A	-
-	6	-	-	-	-
1	5	A06114-03-03-0105	SHEET - FLANGE WINDOW BR	2024-T3 ALUMINUM	-
1	4	A06114-03-03-0104	SHEET - FLANGE WINDOW BL	2024-T3 ALUMINUM	-
1	3	A06114-03-03-0103	FLANGE - WINDOW FRAME BR	6061-T6 ALUMINUM	-
1	2	A06114-03-03-0102	FLANGE - WINDOW FRAME BL	6061-T6 ALUMINUM	-
1	1	A06114-03-03-0200	FLG LEFT OPENING WLDMT	SEE PART DRAWING	-

DOCUMENT CONTROL STAMP	DATE & TIME PER ASME Y14.3 UNLESS OTHERWISE SPECIFIED DIMENSIONS ARE IN INCHES TOLERANCES ARE FRACTIONS DECIMAL ANGLES ± N/A X ±.1 X.XX ±.01 X.XX ±.005	TRACKING NO. N/A	United States Department of Energy
MATERIAL SEE PARTS LIST	THIRD ANGLE PROJECTION	APPROVALS DATE	Jefferson Lab Thomas Jefferson National Accelerator Facility Newport News Virginia
FINISH MACHINED SURFACES DEBURR & BREAK ALL SHARP EDGES DO NOT SCALE DRAWING	UNLESS OTHERWISE NOTED	DRAWN: C. SOOVA 20 NOV 12 CHECKED: J. MILLER 19 FEB 13 APPROVED: W. SEAY 19 FEB 13 APPROVED: B. WOJTSZEKOWSKI 19 FEB 13	HALL A - DVCS III - EXP E06114 TARGET DVCS III SCATT CHAMB DVCS III FLANGE LEFT OPENING
		SCALE 1:8	SIZE (DWG. NO.) A06114-03-03-0100 REV. -

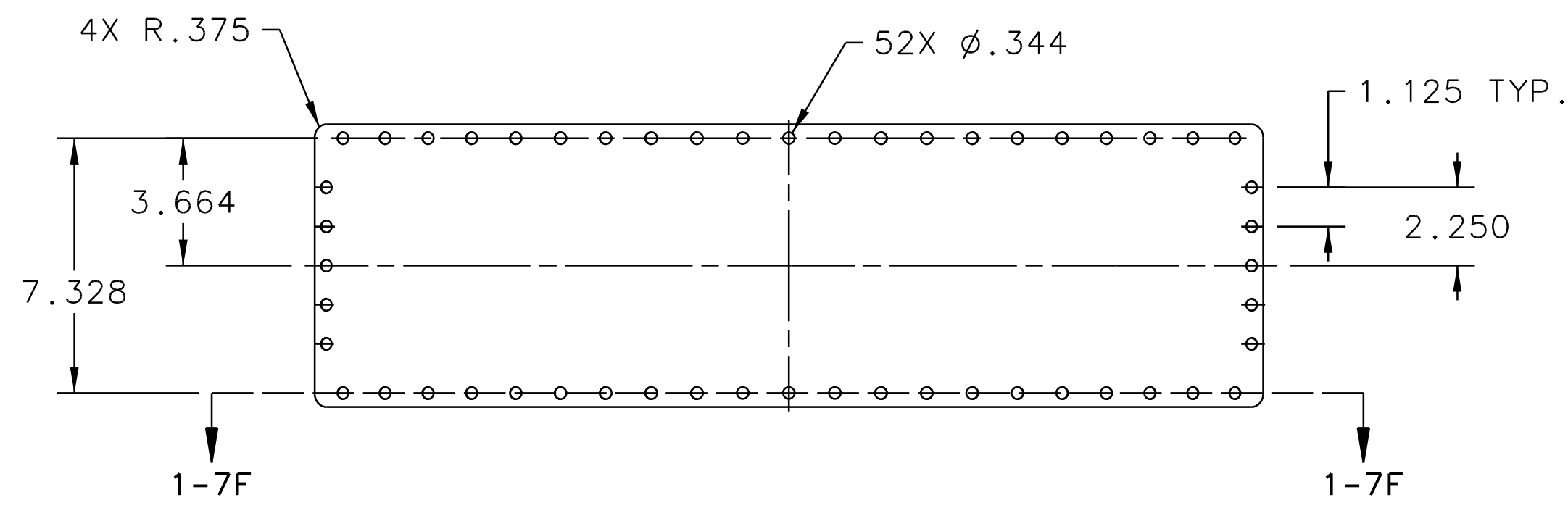
REVISION HISTORY				
ZONE	REV	DESCRIPTION	DATE	APPROVED



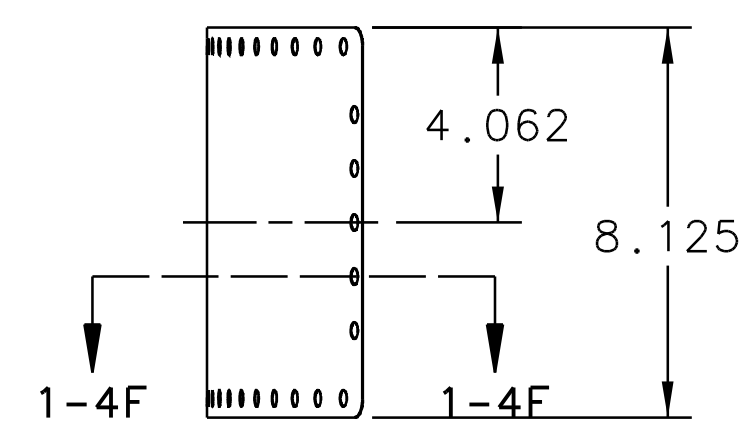
SECTION VIEW 1-7F



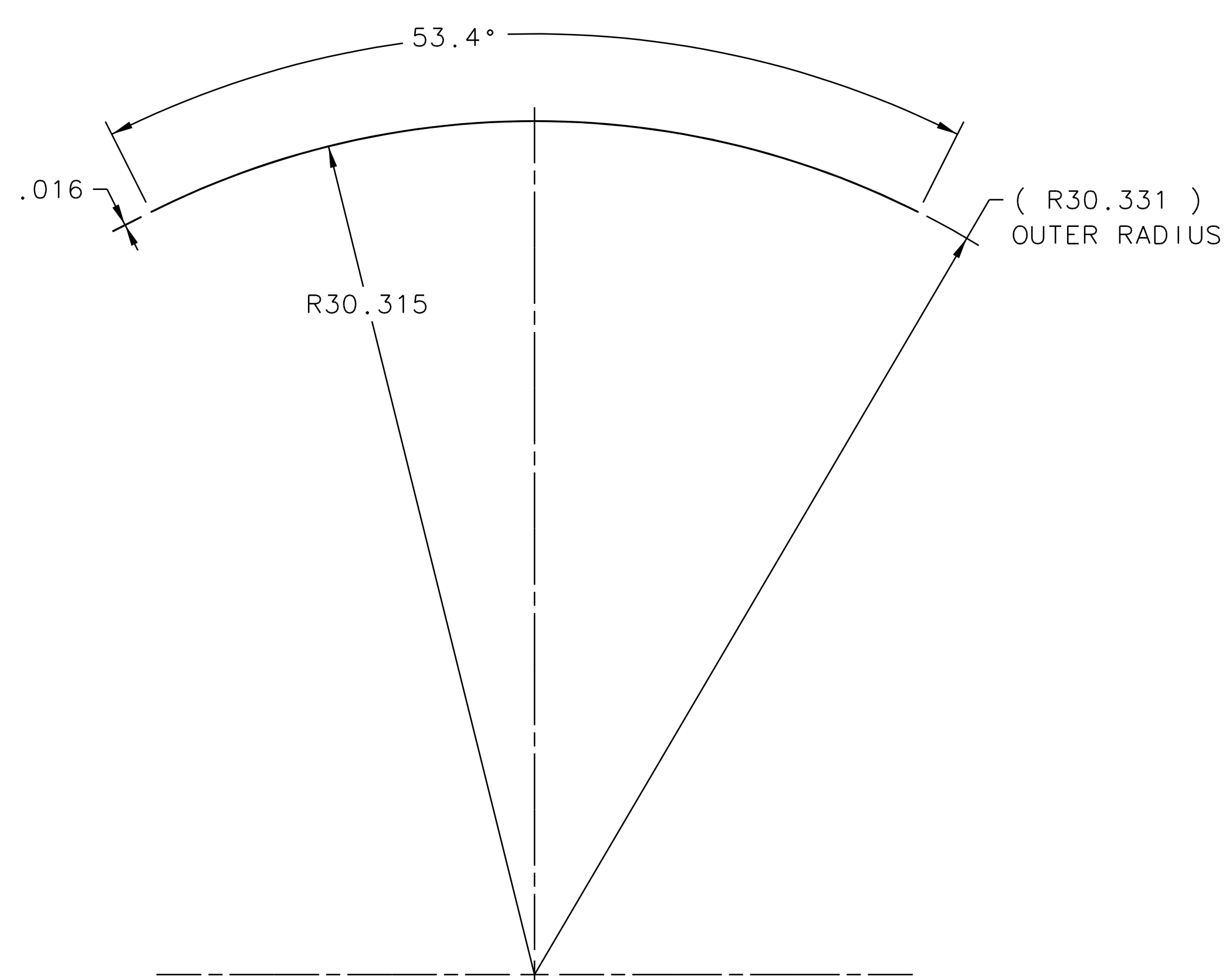
SECTION VIEW 1-4F



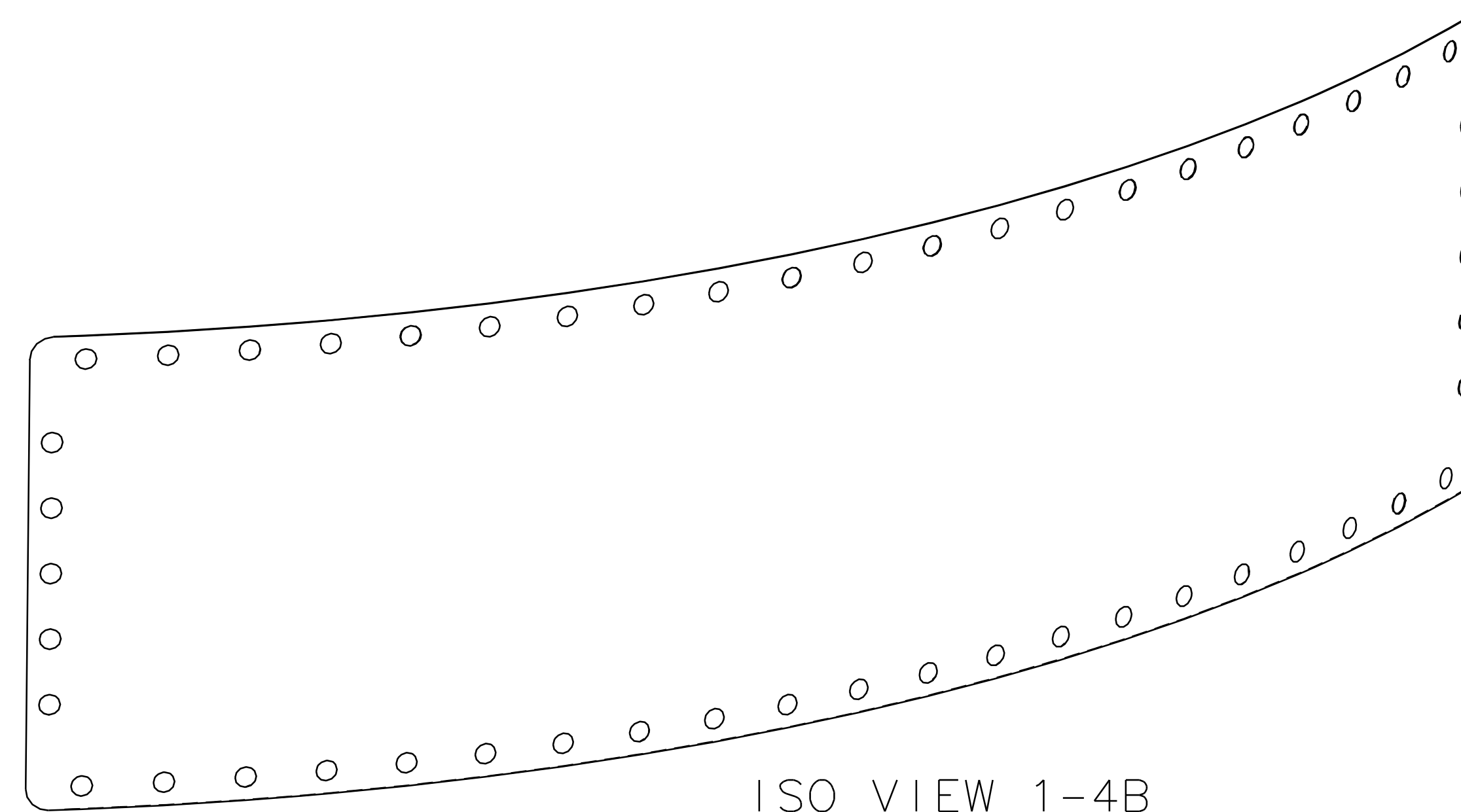
FRONT VIEW 1-7D



RT VIEW 1-5D



BOTTOM VIEW 1-7A



ISO VIEW 1-4B
SCALE 1:2

NOTES:

1. WEIGHT IS APPROXIMATELY .32 LBS.
2. PART TO BE CONDITIONED FOR SAFE HANDLING. REMOVE ALL BURRS AND SHARP EDGES.
3. SHEET SIZE: 28.160 X 7.500 X .016

DOCUMENT CONTROL STAMP		EACH SHEET OF MULTI-SHEET DRAWINGS SHALL ALWAYS HAVE THE SAME REVISION LEVEL.		TRACKING NO.		United States Department of Energy	
MATERIAL ALUMINUM 2024-T3 (CLAD)		FINISH MACHINED SURFACES DEBURR & BREAK ALL SHARP EDGES		THIRD ANGLE PROJECTION		APPROVALS	
UNLESS OTHERWISE NOTED		DIM & TOL PER ASME Y14.5 UNLESS OTHERWISE SPECIFIED DIMENSIONS ARE IN INCHES TOLERANCES ARE		N/A		DATE	
DO NOT SCALE DRAWING		FRACTIONS X ± N/A		DECIMAL X ± 0.01		DATE	
		ANGLES X ± 10'		X ± 0.05		DATE	
				CHECKED J. MILLER		DATE 19 FEB 13	
				APPROVED W. SEAY		DATE 19 FEB 13	
				APPROVED B. WOJTSZEKOWSKI		DATE 19 FEB 13	
				SCALE 1:4		SHEET 1 OF 1	