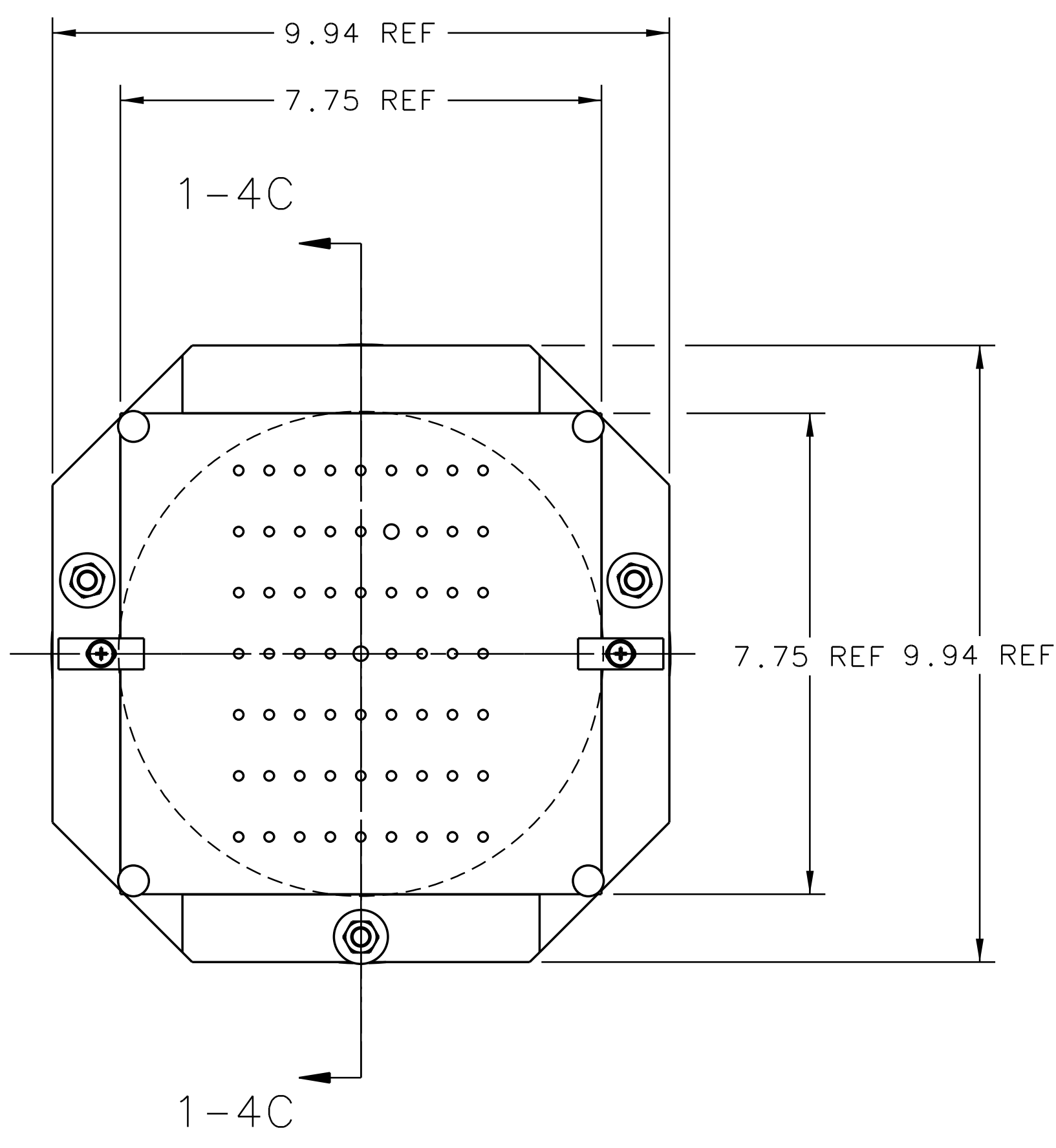
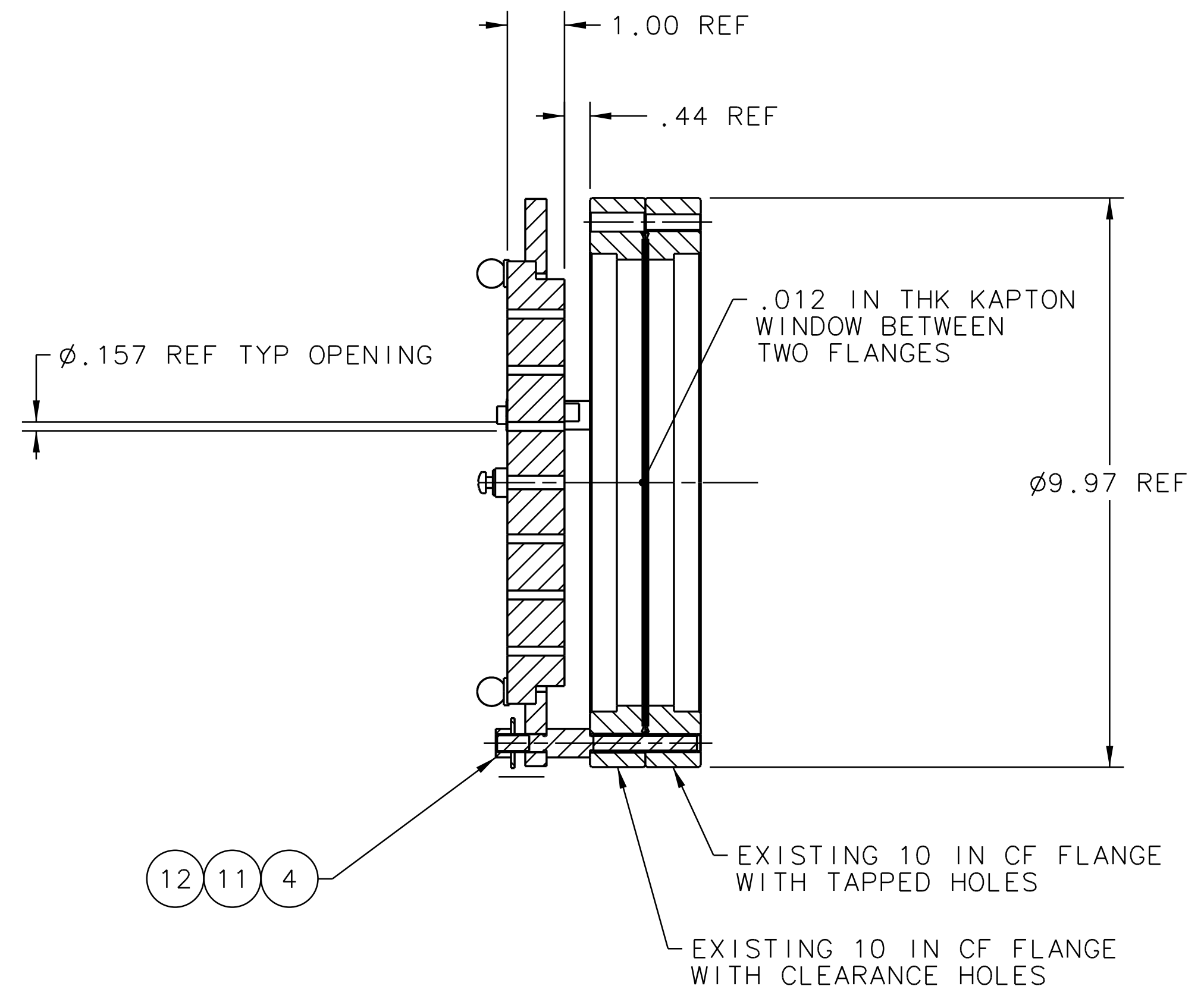


REVISION HISTORY				
ZONE	REV	DESCRIPTION	DATE	APPROVED

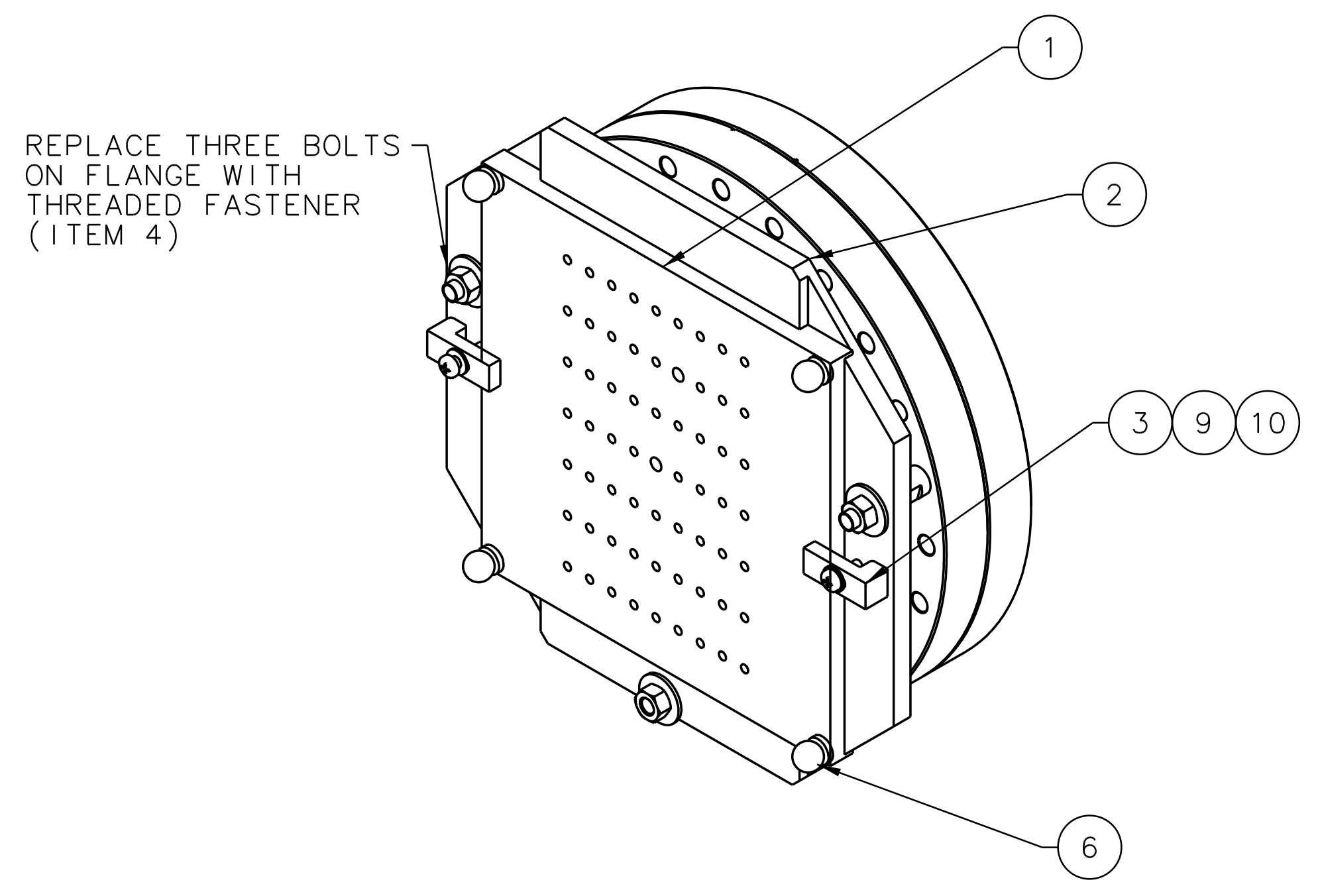


FRONT VIEW 1-7C



SECT VIEW 1-4C

NOTES:
1. APPROX. WEIGHT 54 LBS.



ISO VIEW 1-7A

QTY REQD	ITEM NO.	PART OR IDENTIFYING NO.	NOMENCLATURE OR DESCRIPTION	MATERIAL SPECIFICATION	NOTES
3	12	FASTENAL 77711 OR EQUIV	HEX NUT 5/16-18 UNC	STAINLESS STEEL	-
3	11	FASTENAL 78015 OR EQUIV	WASHER 5/16 NOM DIA	STAINLESS STEEL	-
2	10	FASTENAL 78009 OR EQUIV	WASHER #10 NOM DIA	STAINLESS STEEL	-
2	9	FASTENAL 71521 OR EQUIV	SCREW, PAN HEAD #10-24 UNC X .875 IN LG	STAINLESS STEEL	-
-	8	-	-	-	-
-	7	-	-	-	-
4	6	McMASTER CARR 31325A27 OR EQUIV	SHOULDER TOOLING BALL 1/2 IN BALL, 1/4 IN SHANK	HEAT-TREATED, HARDENED & GROUND STEEL	-
-	5	-	-	-	-
3	4	A05103-15-01-0004	THREADED FASTENER	STAINLESS STEEL	-
2	3	A07108-15-01-0303	CLAMP	STAINLESS STEEL	-
1	2	A07108-15-01-0302	HOLDER FOR SQUARE SIEVE	ALUMINUM	-
1	1	A07108-15-01-0301	SQUARE COLLIMATOR SIEVE	TUNGSTEN	-

DOCUMENT CONTROL STAMP	DIM & TOL PER ASME Y14.5 UNLESS OTHERWISE SPECIFIED DIMENSIONS ARE IN INCHES TOLERANCES ARE: FRACTIONS DECIMAL ANGLES ± N/A .XX ± .01 .XXX ± .005 ± .50°	TRACKING NO. N/A	United States Department of Energy	Jefferson Lab Thomas Jefferson National Accelerator Facility	Newport News Virginia
MATERIAL SEE PARTS LIST	THIRD ANGLE PROJECTION	APPROVALS	DATE	HALL A - EXP 07108 GMP SPECTROMETER - COLLIMATOR/SIEVE HRS BEAM RIGHT SQUARE COLLIMATOR SIEVE ASSY	
FINISH MACHINED SURFACES DEBURR & BREAK ALL SHARP EDGES	N/A UNLESS OTHERWISE NOTED	DRAWN J. MILLER	10SEP14	SIZE DWG. NO. D A07108-15-01-0300	REV. -
DO NOT SCALE DRAWING		CHECKED		SCALE 1:2	USED ON ASSY NO. - SHEET 1 OF 1