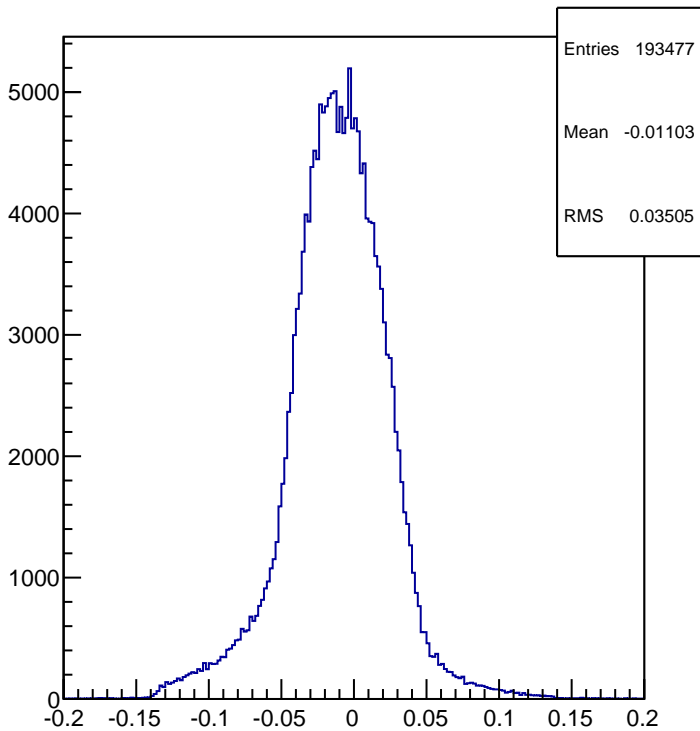


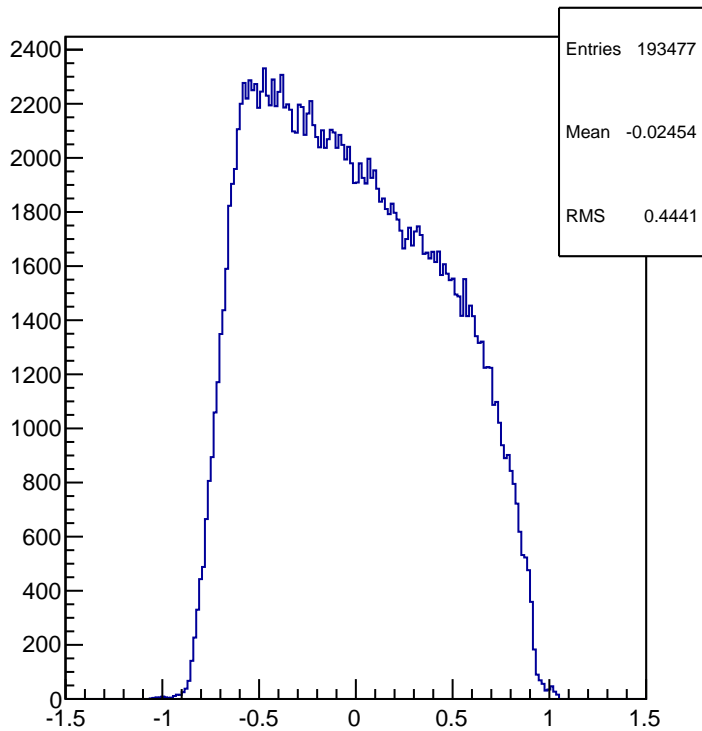
Run #21970

FP Variables (Detector Coord.)

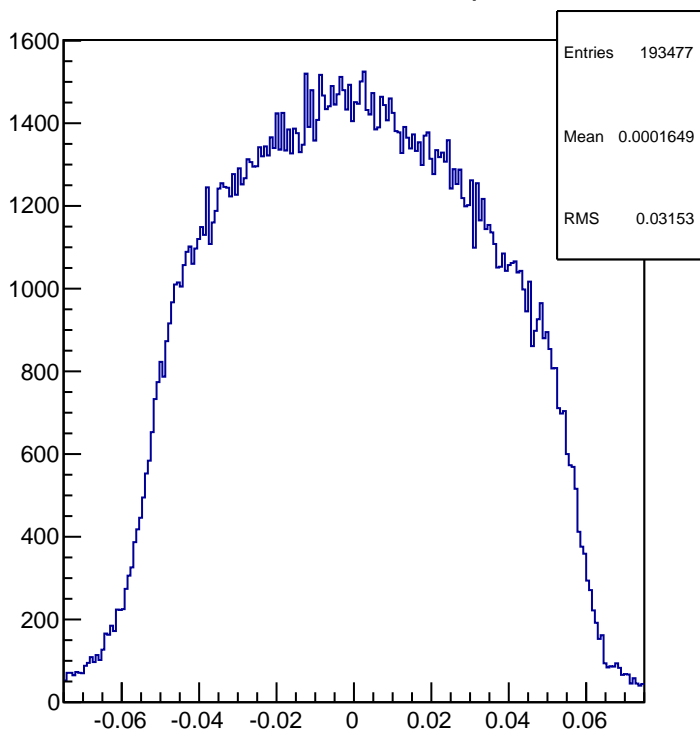
R-arm FP Detector y



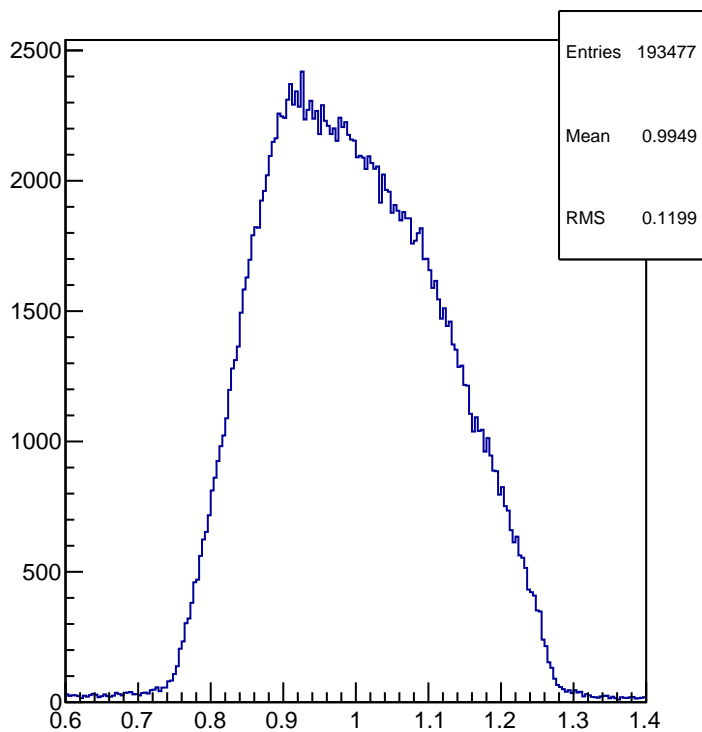
R-arm FP Detector x



R-arm FP Detector phi



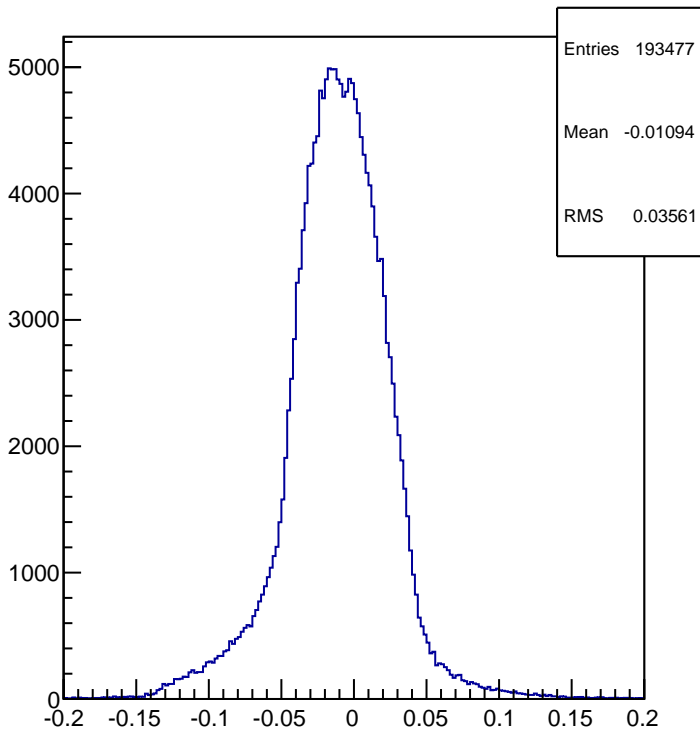
R-arm FP Detector theta



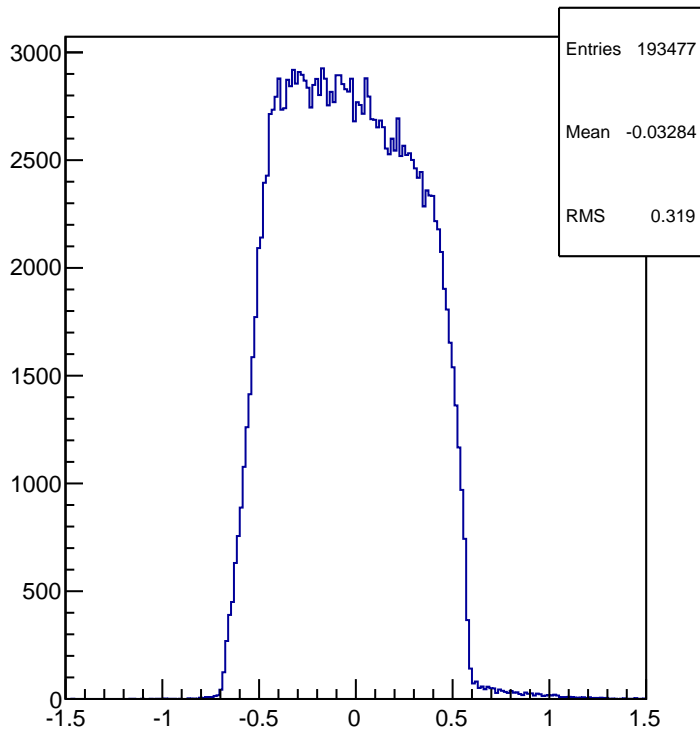
Run #21970

FP Variables (Transport Coord.)

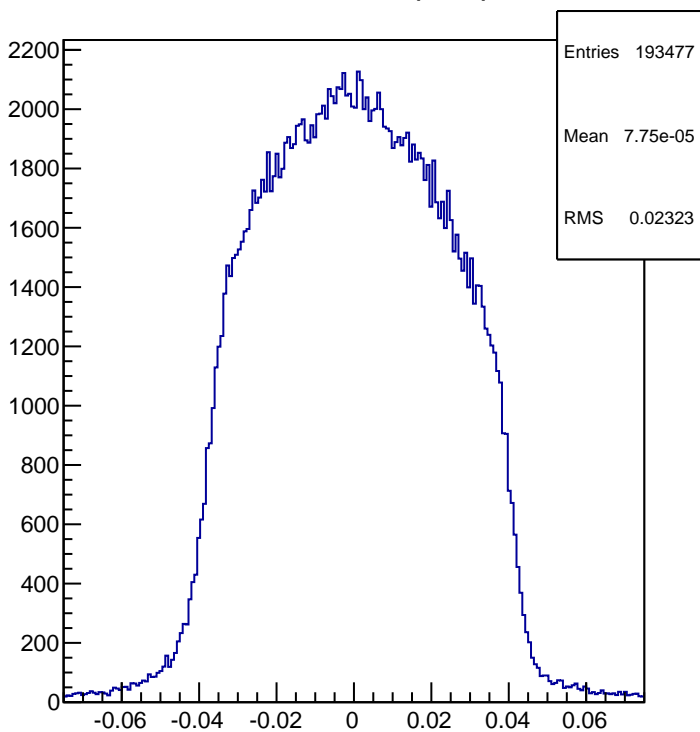
R-arm FP Transport y



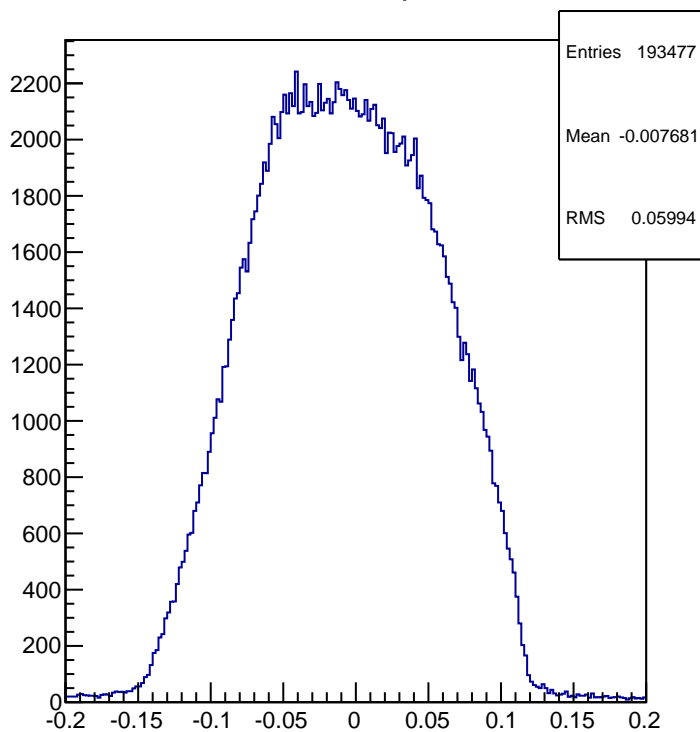
R-arm FP Transport x



R-arm FP Transport phi



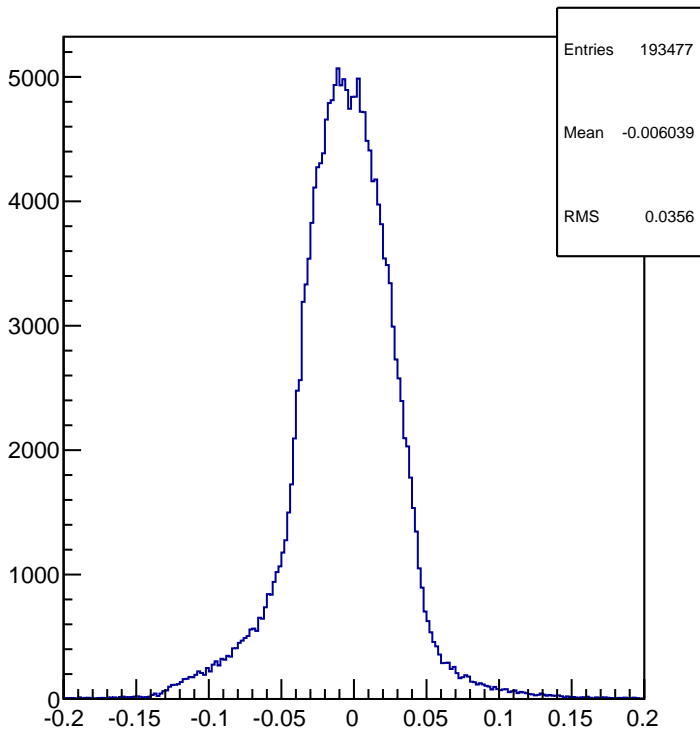
R-arm FP Transport theta



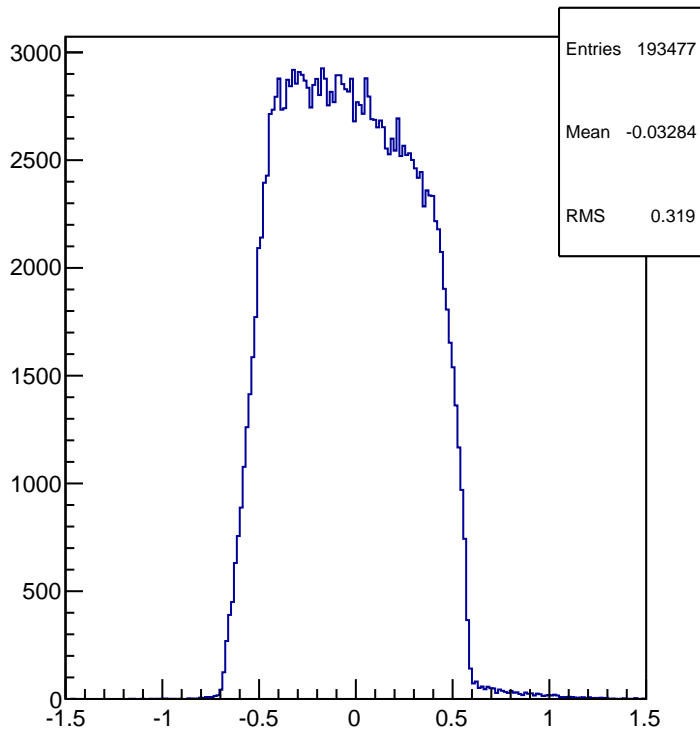
Run #21970

FP Variables (Rotated Coord.)

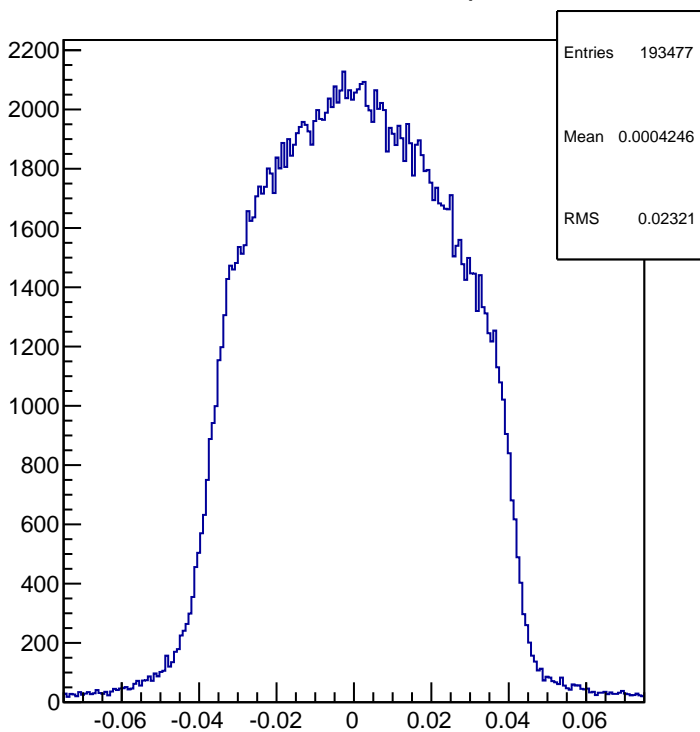
R-arm FP Rotated y



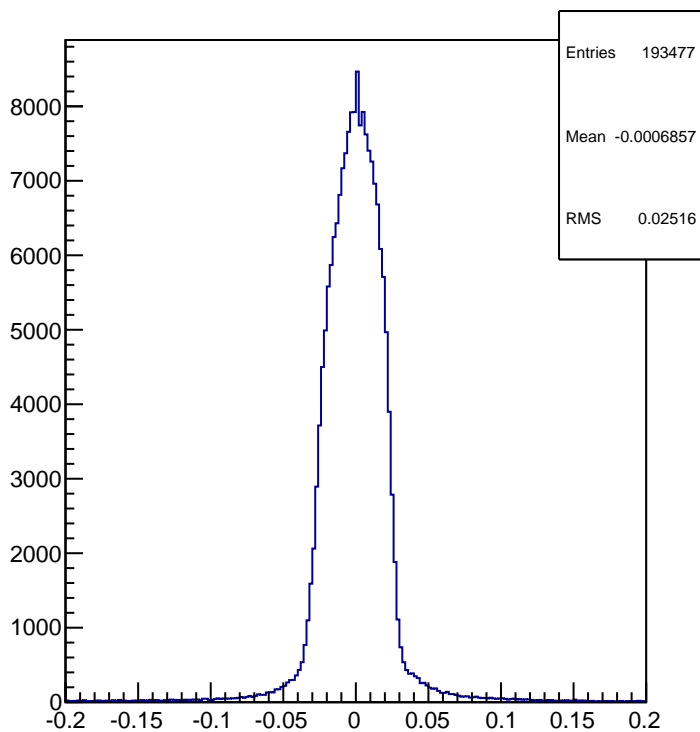
R-arm FP Rotated x



R-arm FP Rotated phi



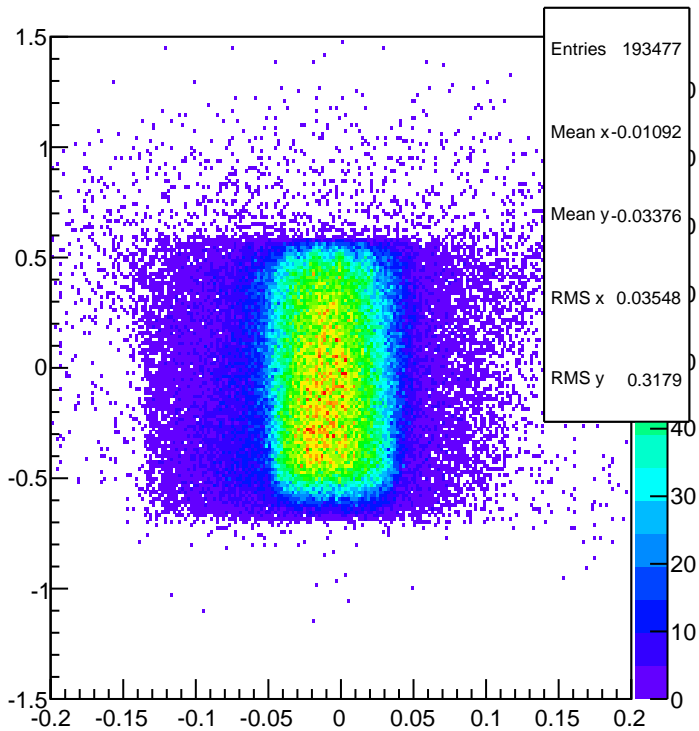
R-arm FP Rotated theta



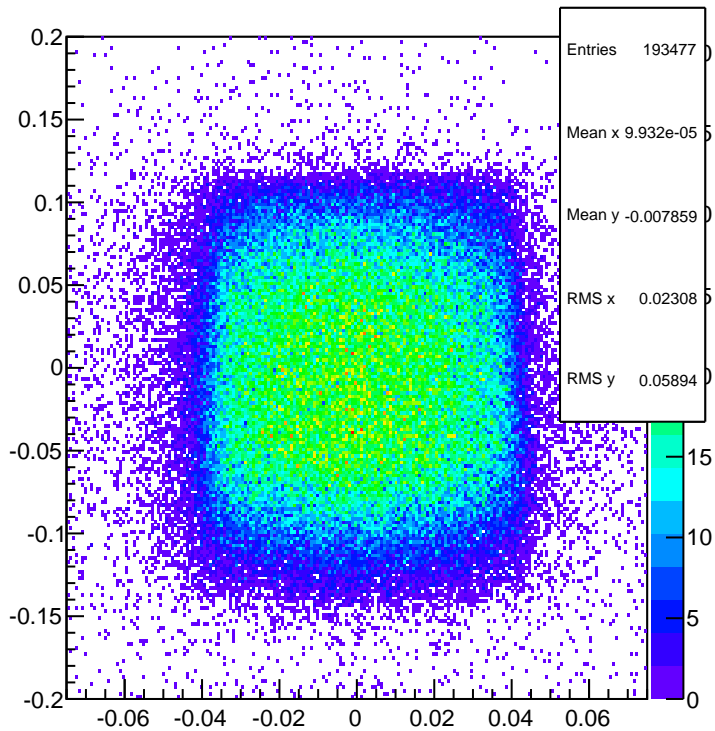
Run #21970

FP Variables (2-d)

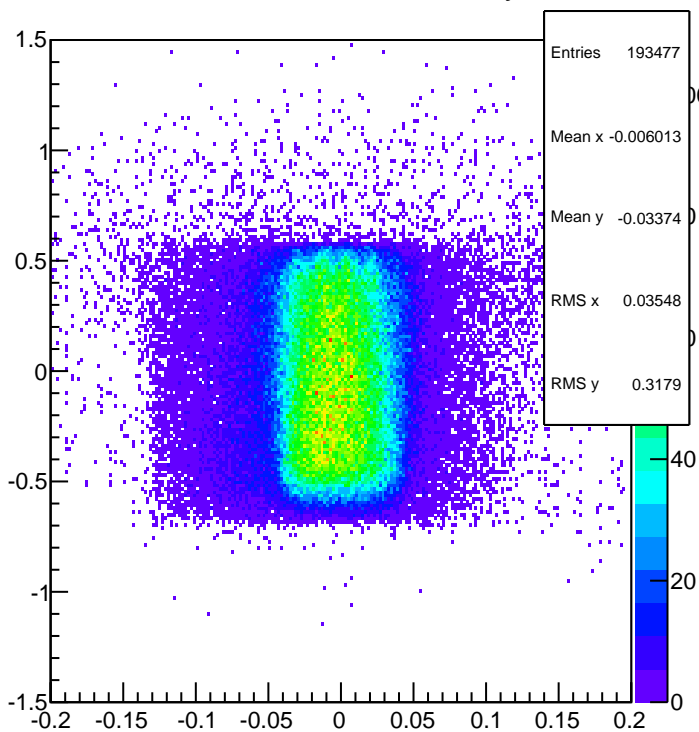
R-arm FP Transport x vs. y



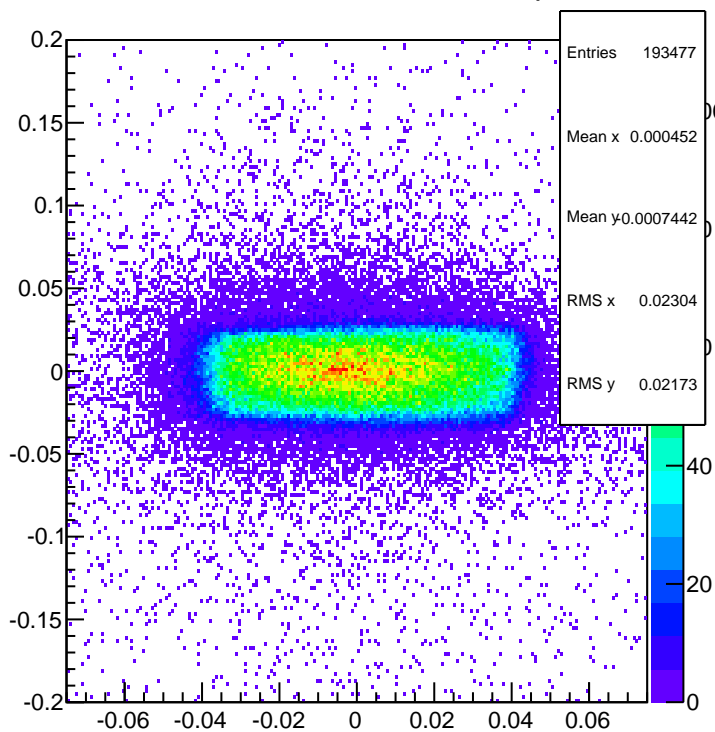
R-arm FP Transport theta vs. phi



R-arm FP Rotated x vs. y



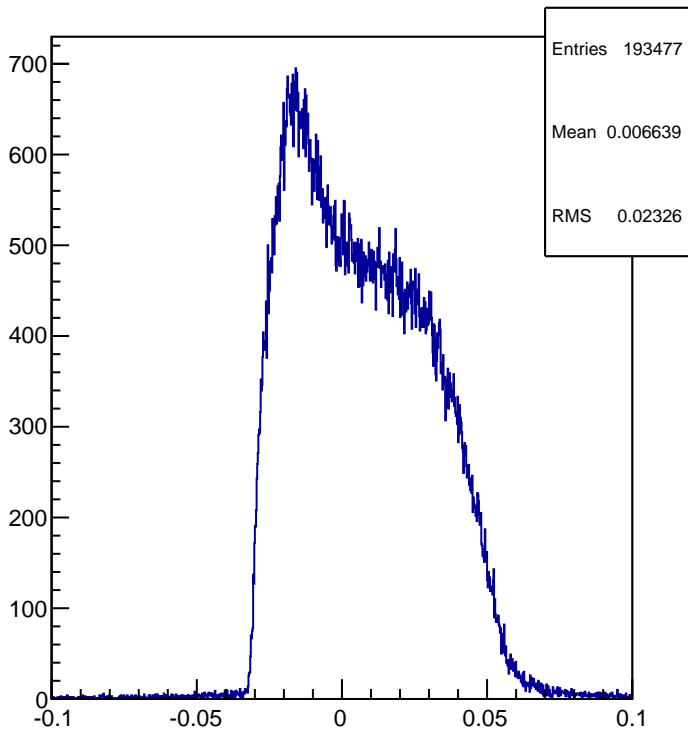
R-arm FP Rotated theta vs. phi



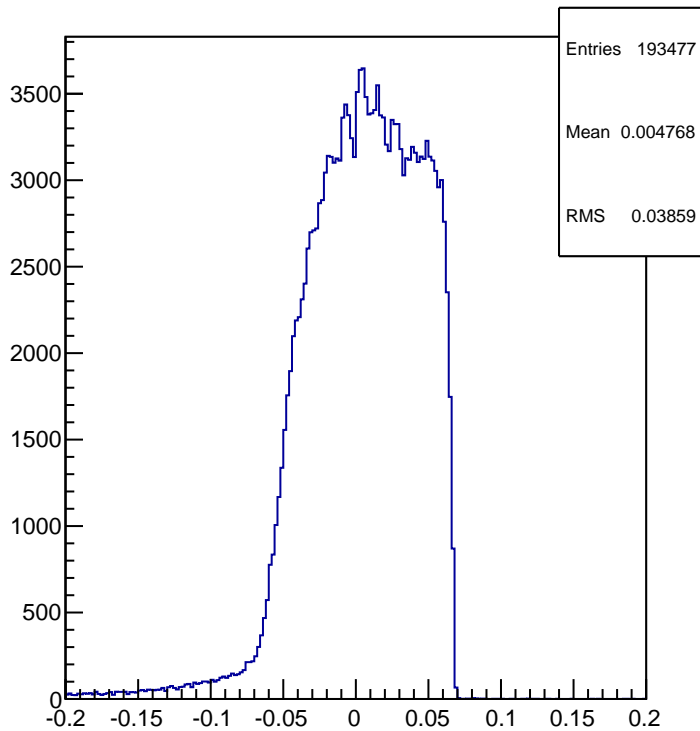
Run #21970

Tracking Variables

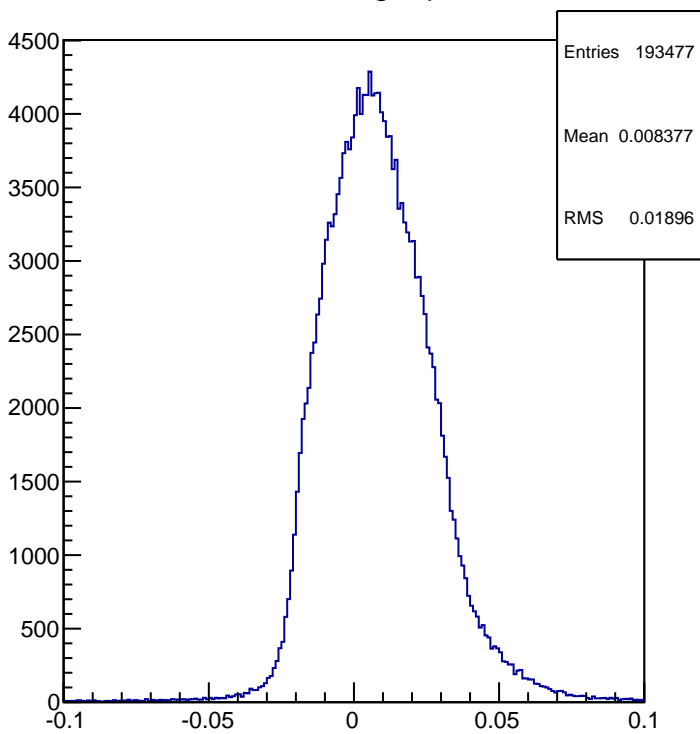
R-arm delta



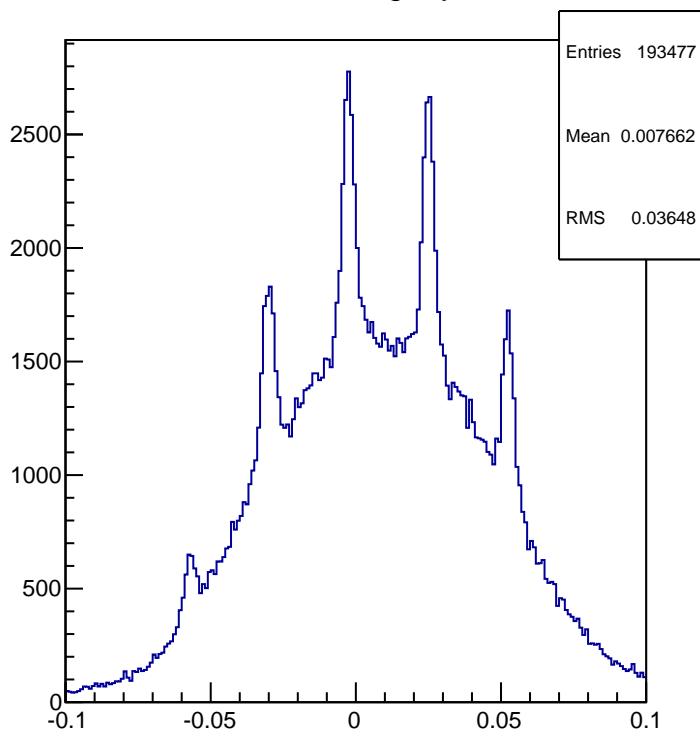
R-arm target theta



R-arm target phi



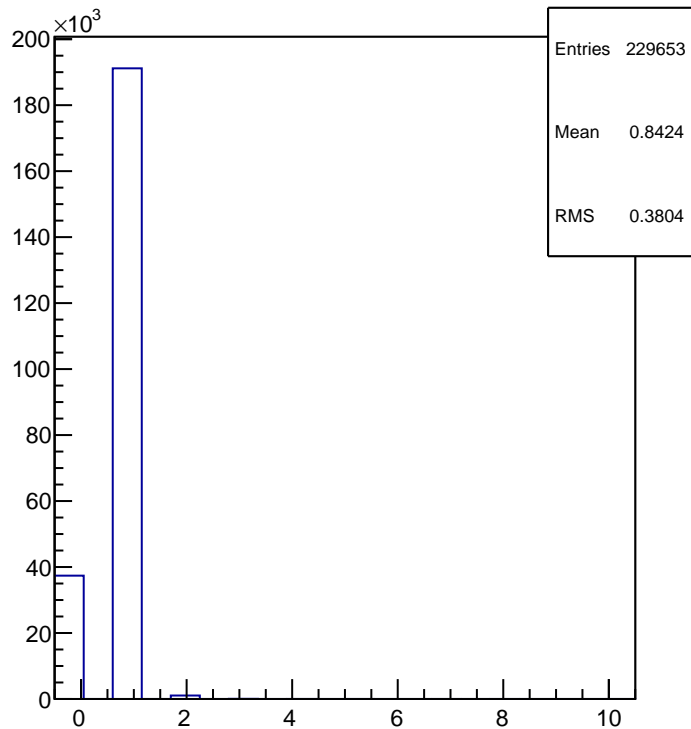
R-arm target y



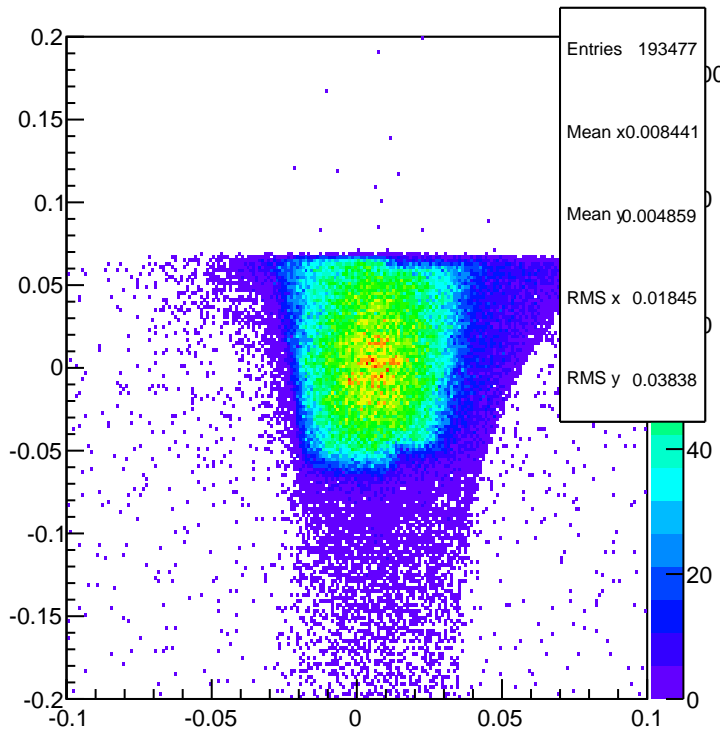
Run #21970

Tracking and Reconstruction

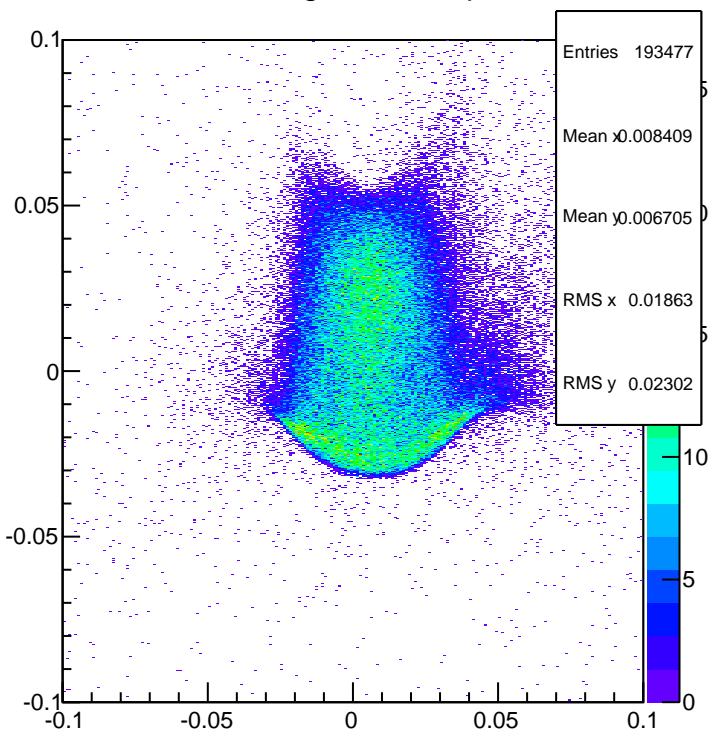
R-arm number of tracks



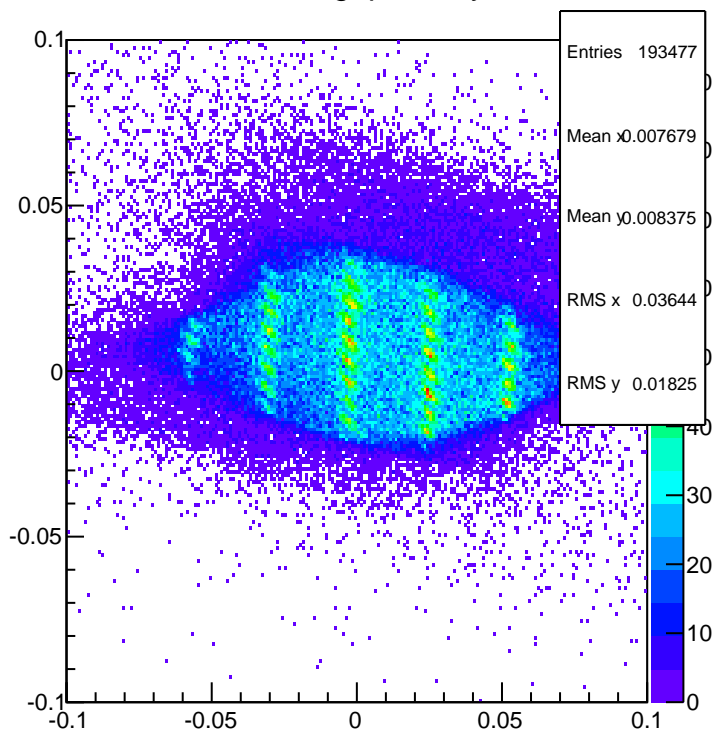
R-arm tgt theta vs. phi



R-arm tgt delta vs. phi



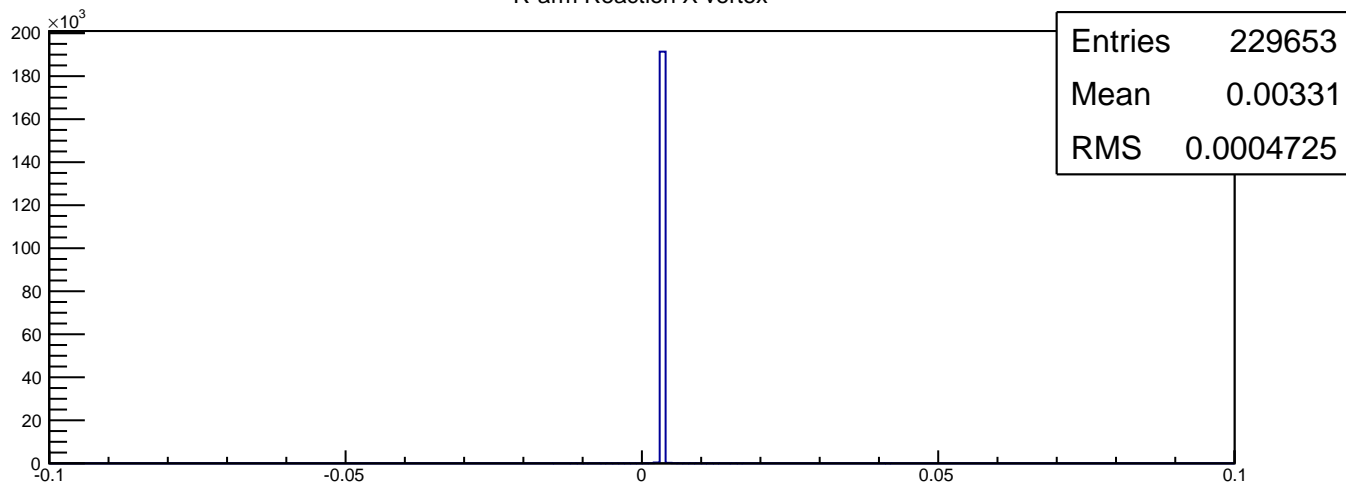
R-arm tgt phi vs. y



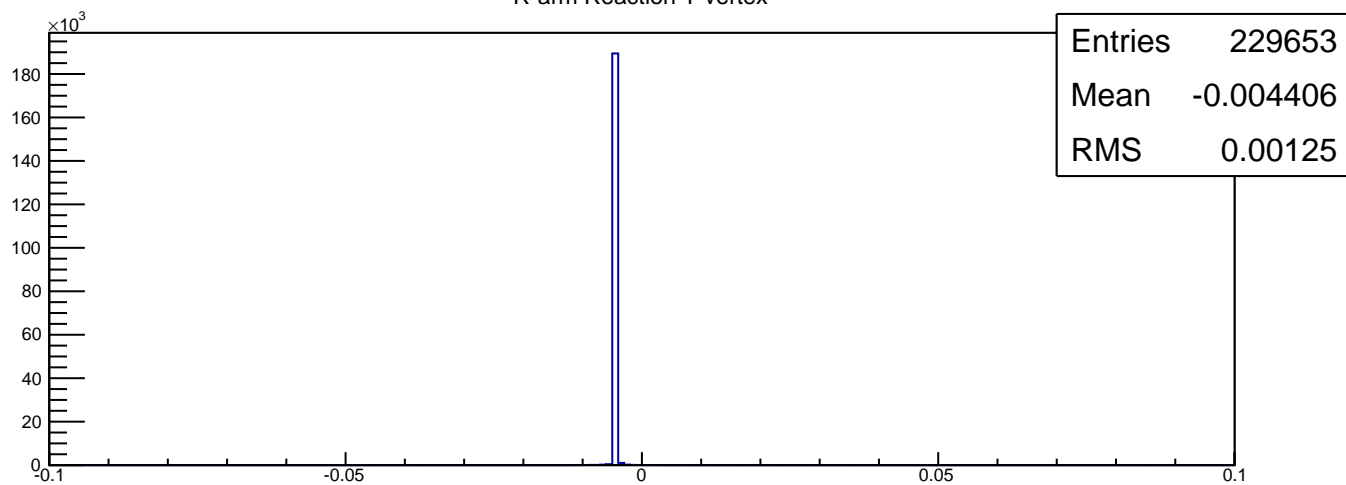
Run #21970

Reaction Vertex

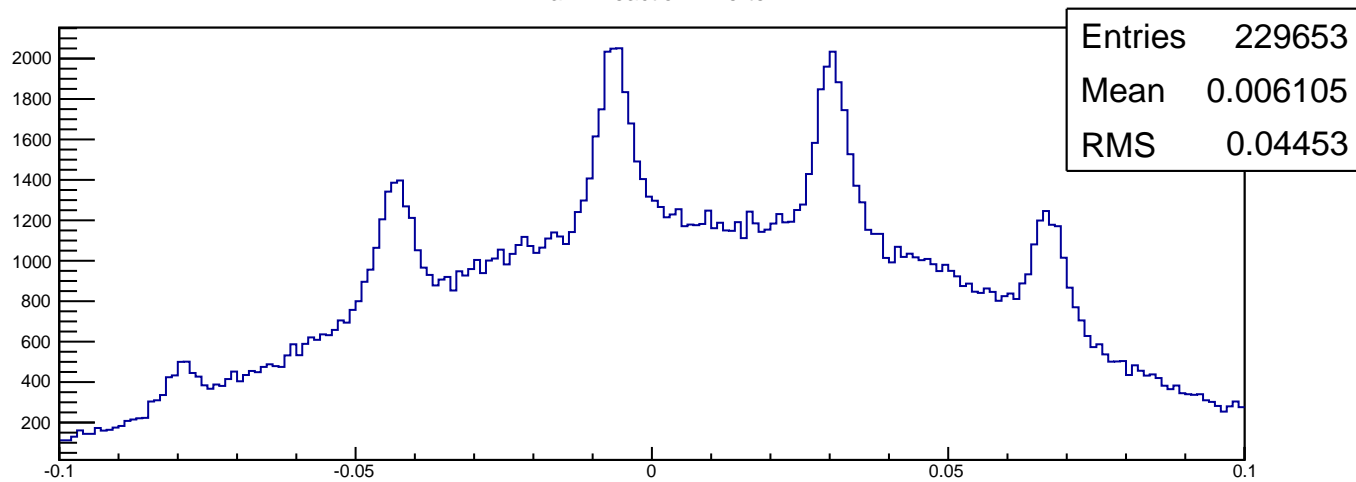
R-arm Reaction X vertex



R-arm Reaction Y vertex



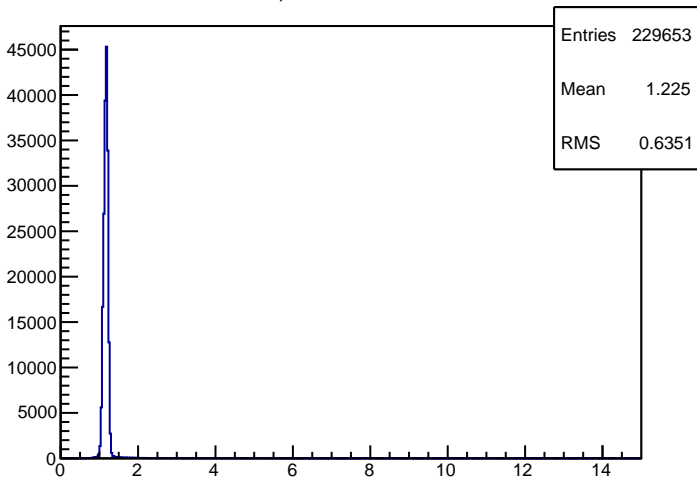
R-arm Reaction Z vertex



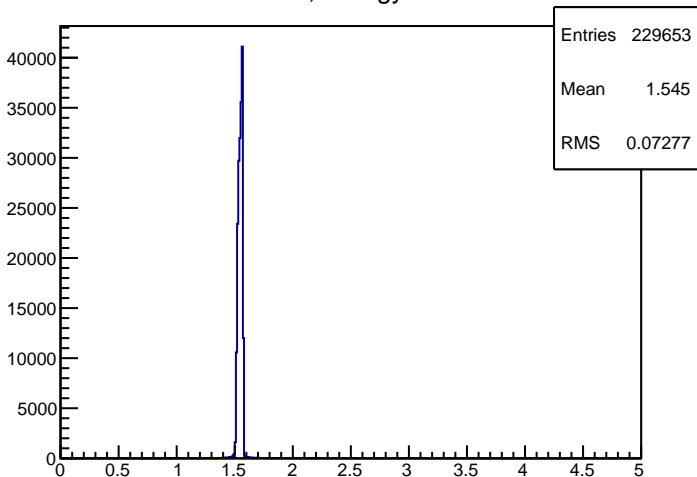
Run #21970

Physics

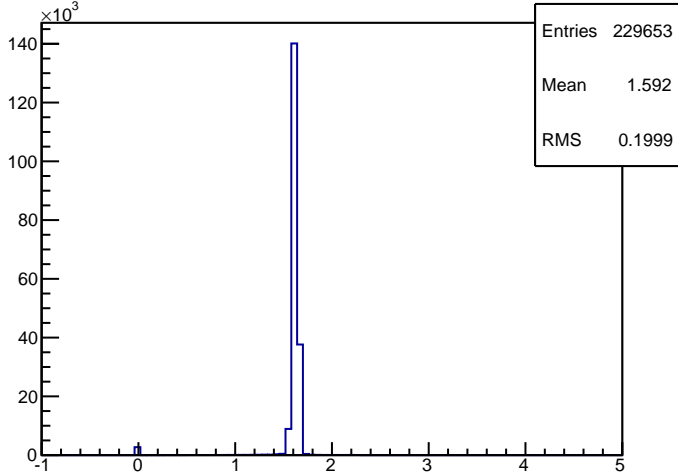
R-arm Q2, 4-momentum transfer



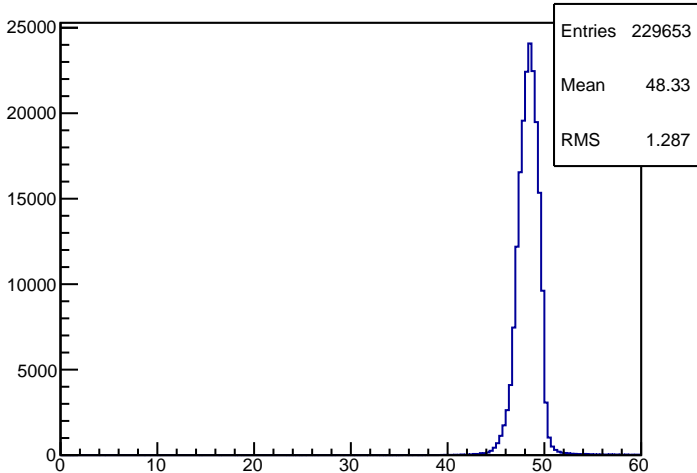
R-arm nu, energy transfer



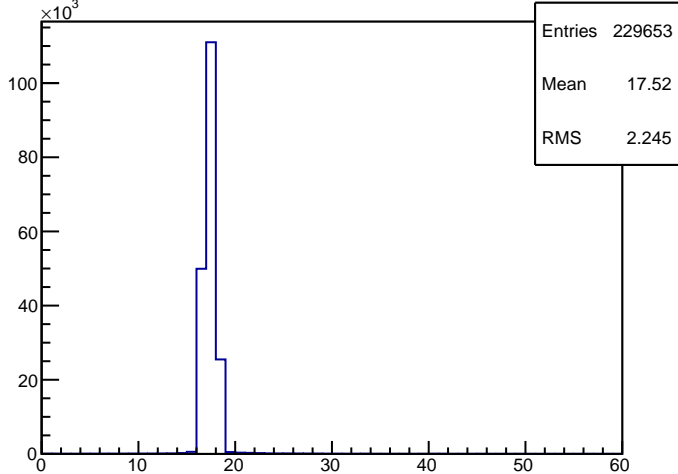
R-arm W, Invariant mass



R-arm Electron Angle of scattering (deg)



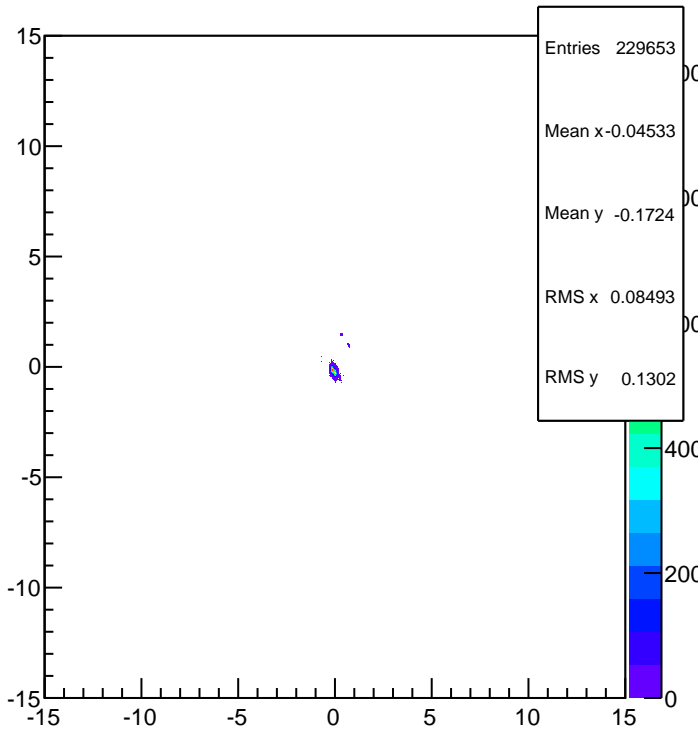
R-arm Virtual photon angle (deg)



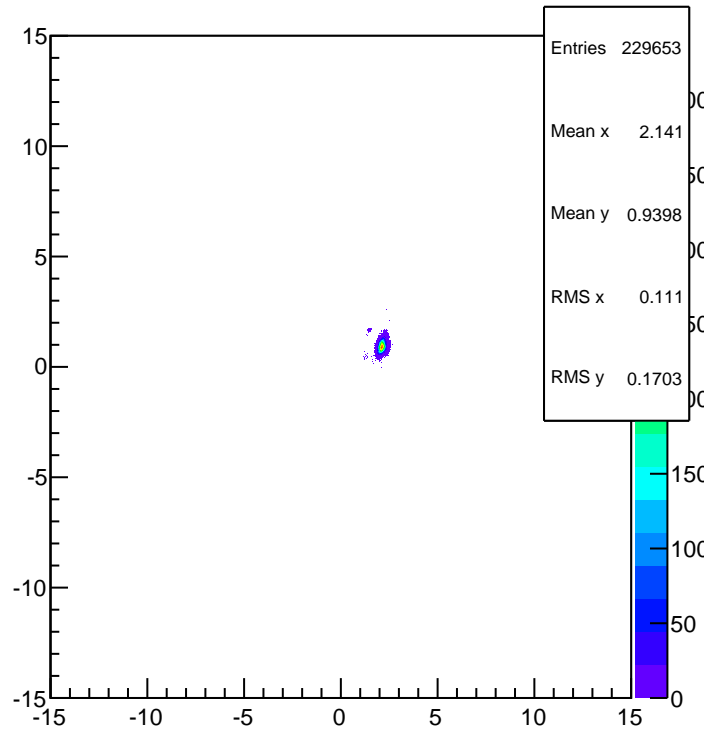
Run #21970

BPM/Target Information (2-D)

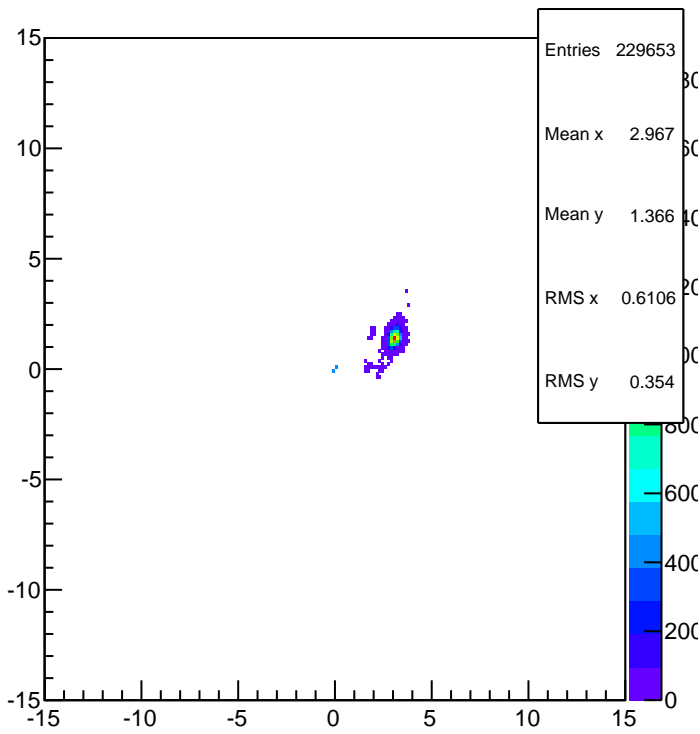
BPMA y vs x



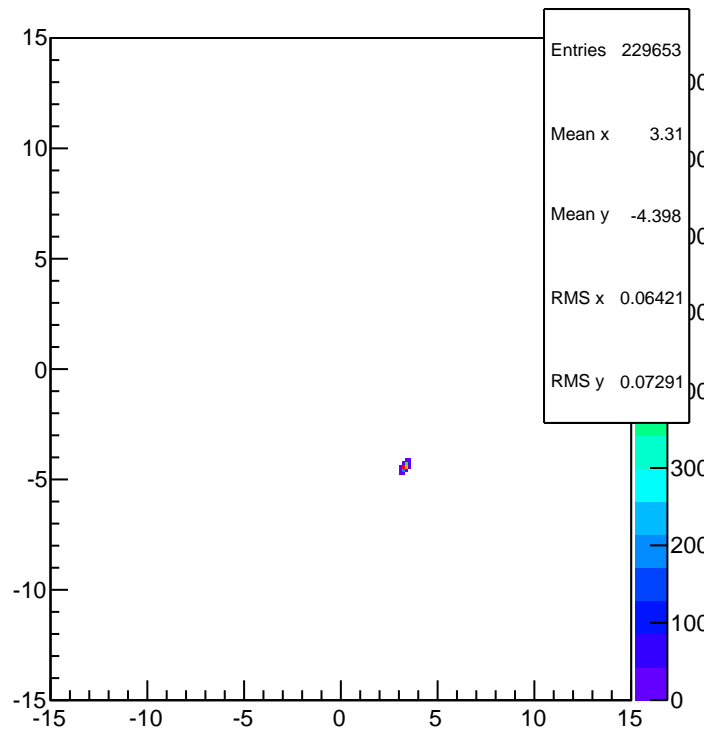
BPMB y vs x



Beam at target y vs x (from BPMs)



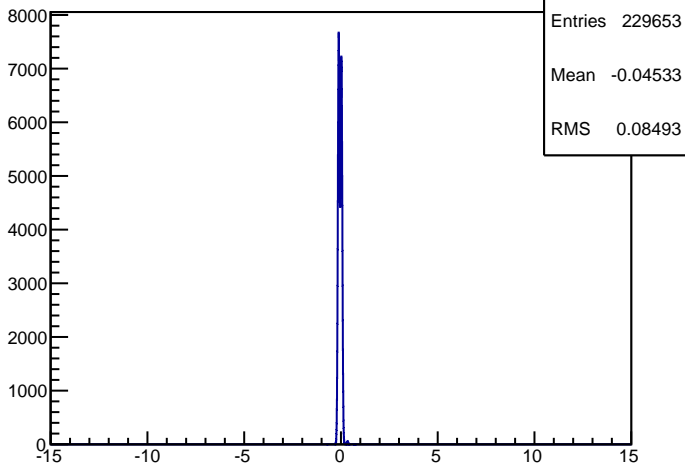
Beam at target y vs x (from Rasters)



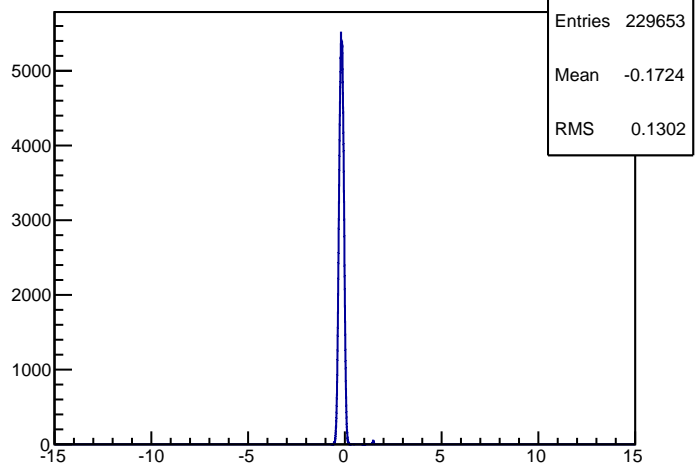
Run #21970

BPM Information (1-D)

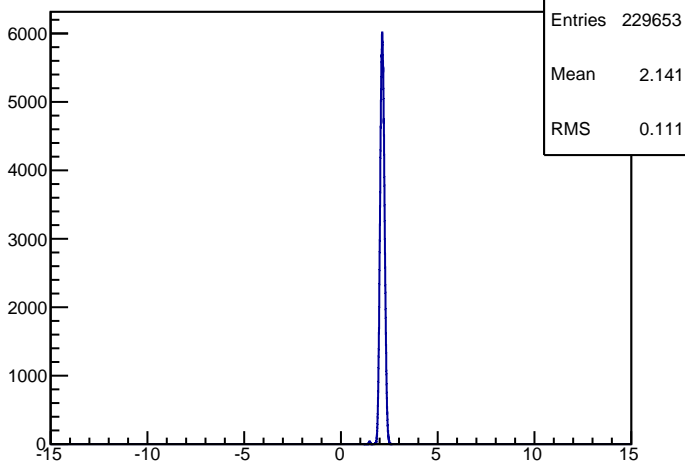
BPMA x [mm]



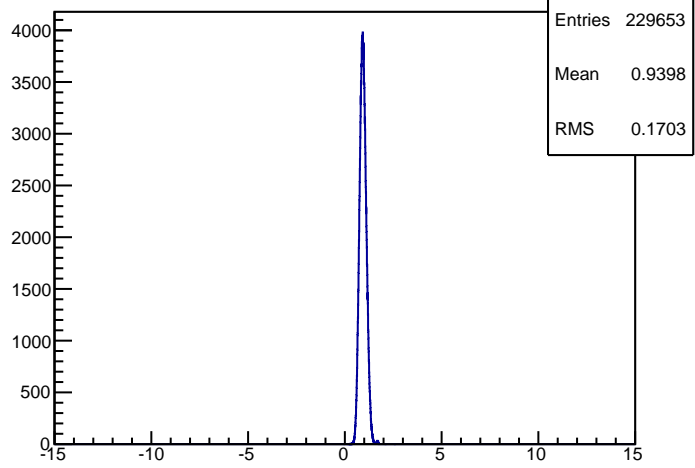
BPMA y [mm]



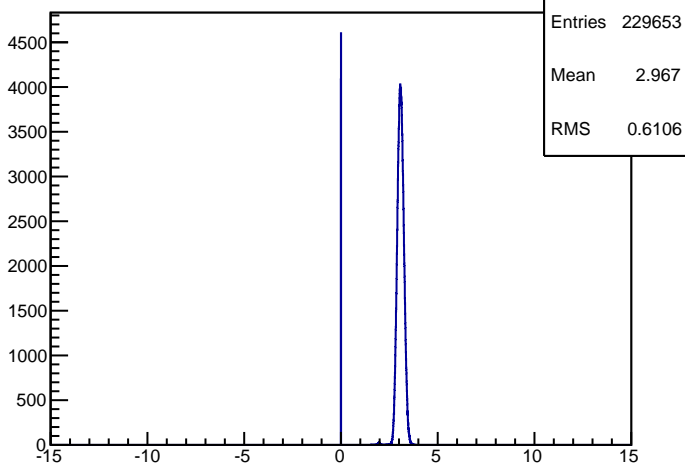
BPMB x [mm]



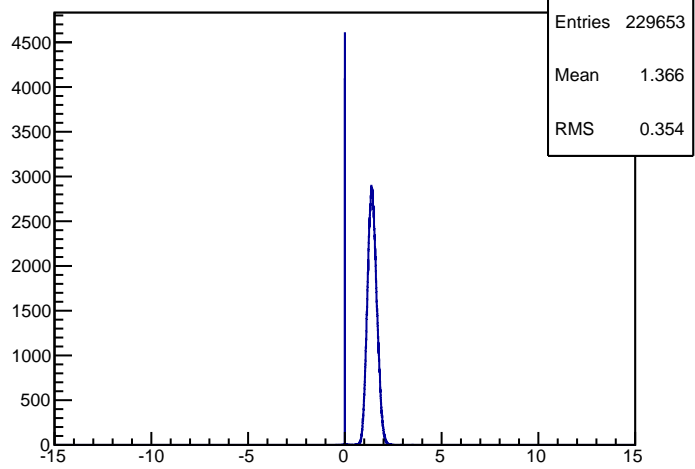
BPMB y [mm]



x at target (from BPMs) [mm]



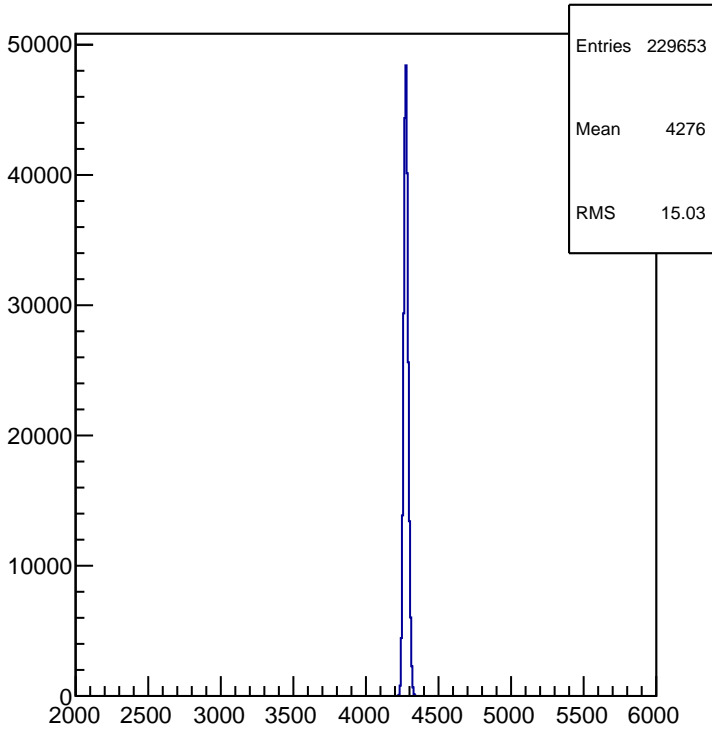
y at target (from BPMs) [mm]



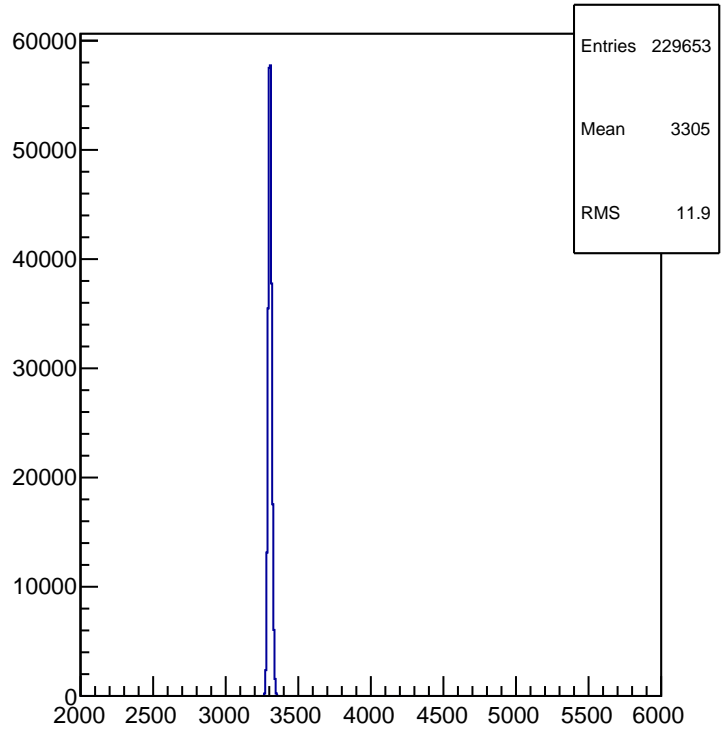
Run #21970

Raster Current Information (1-D)

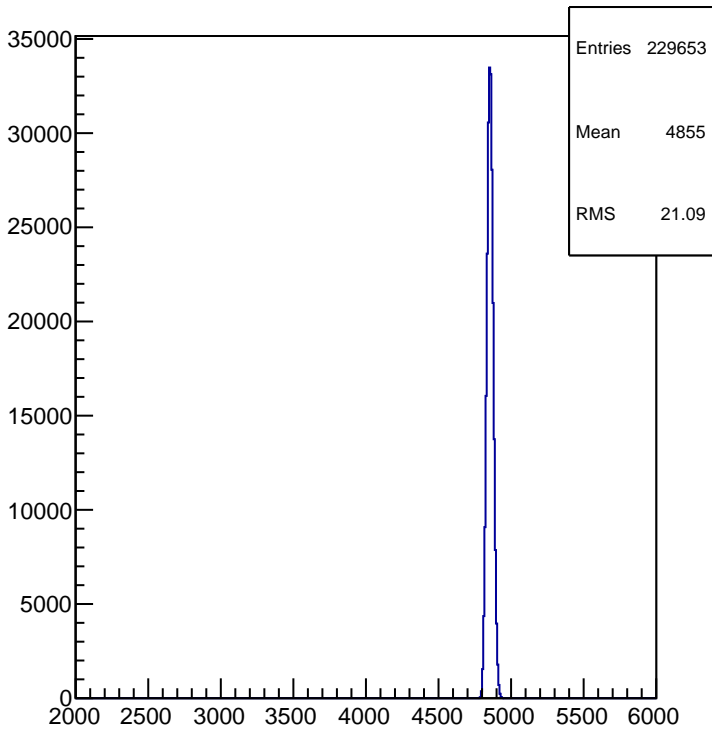
Fast Raster 1 X current



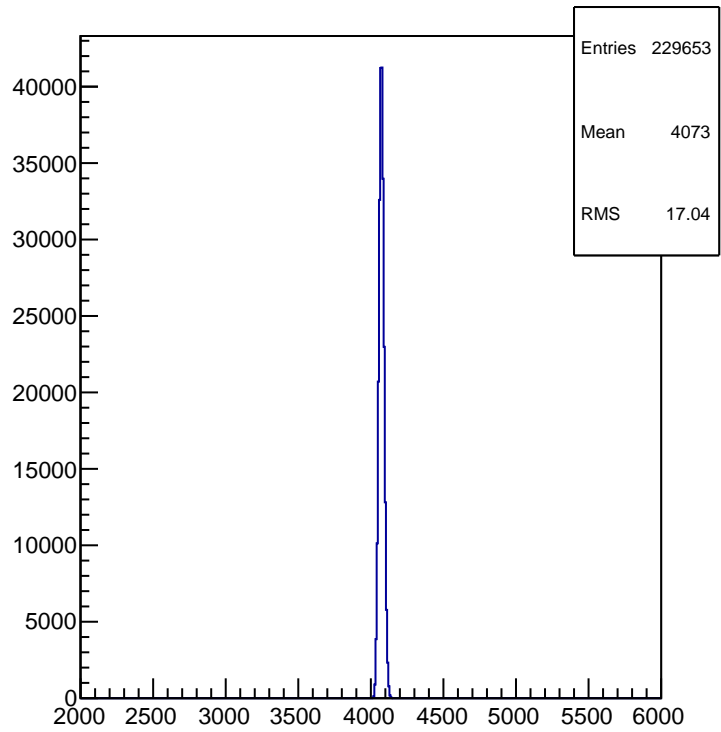
Fast Raster 1 Y current



Fast Raster 2 X current



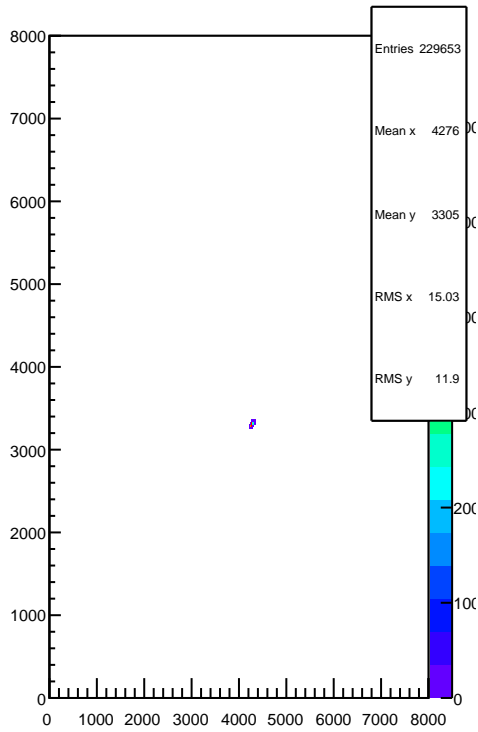
Fast Raster 2 Y current



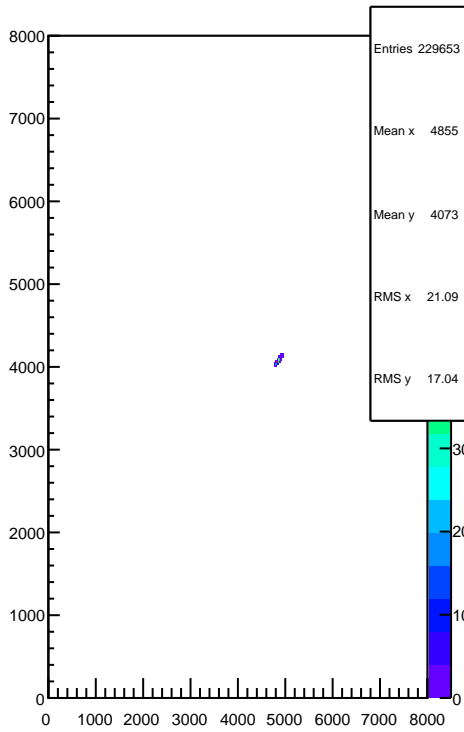
Run #21970

Raster Current Information (2-D)

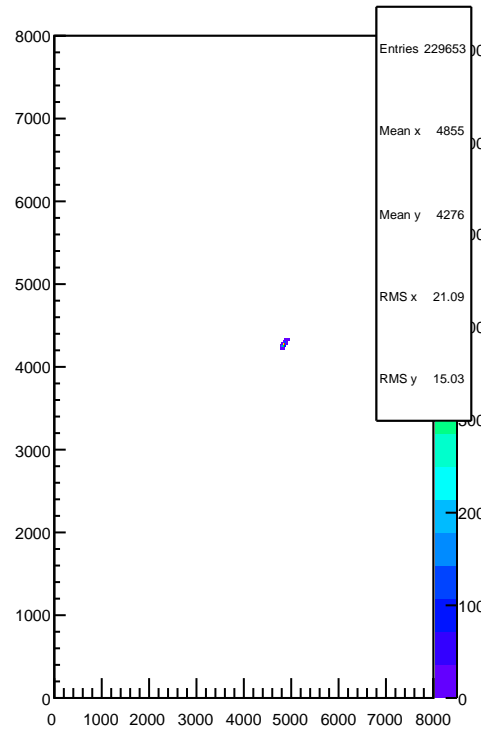
Fast Raster 1 X vs Y (current)



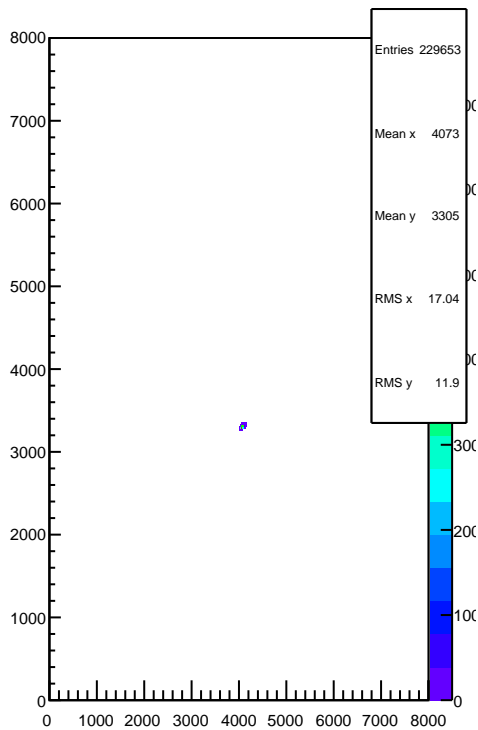
Fast Raster 2 X vs Y (current)



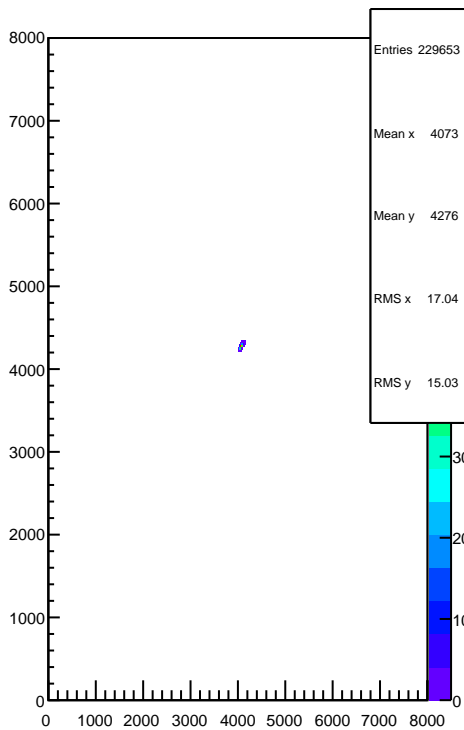
Fast Raster 1 X vs 2 X (current)



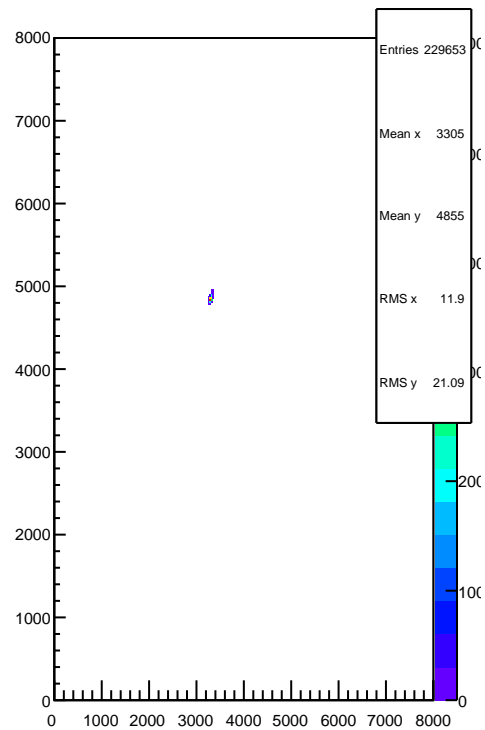
Fast Raster 1 Y vs 2 Y (current)



Fast Raster 1 X vs 2 Y (current)



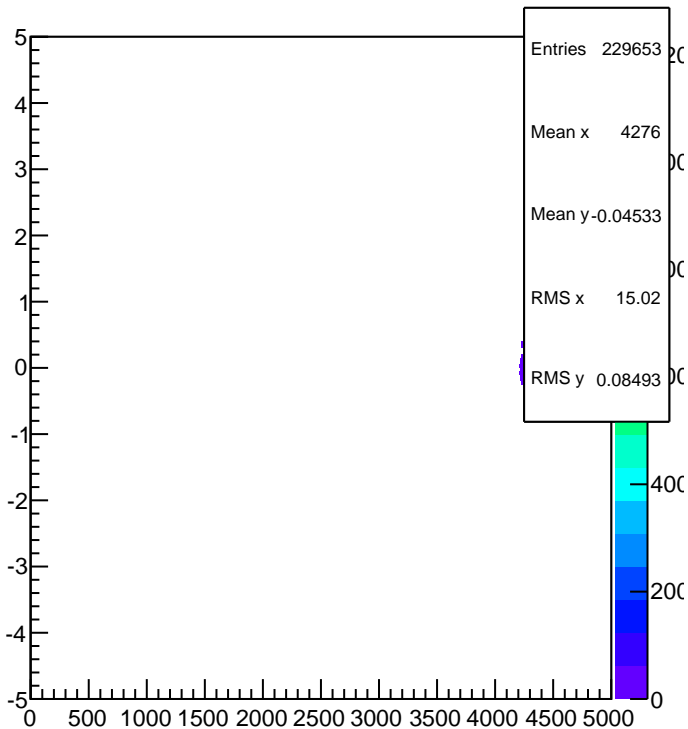
Fast Raster 2 X vs 1 Y (current)



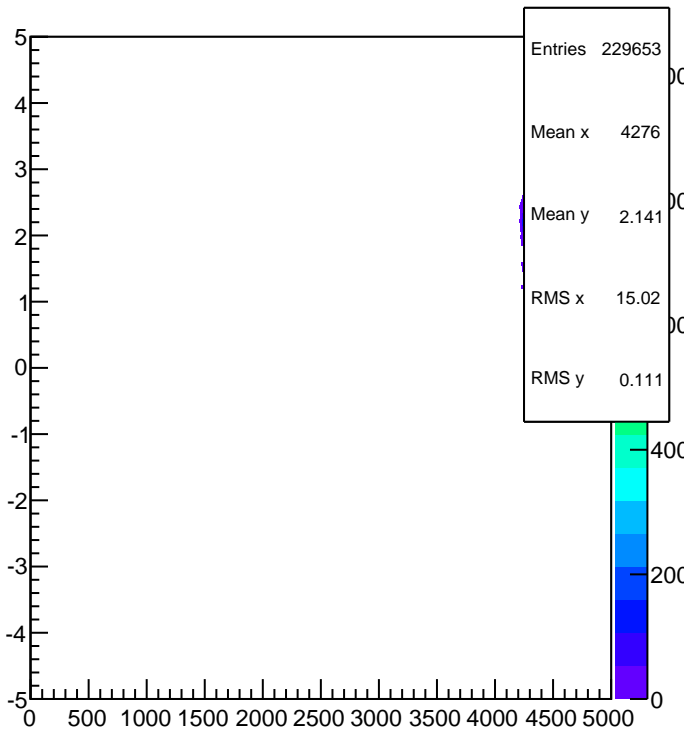
Run #21970

Up Raster/BPM Sync

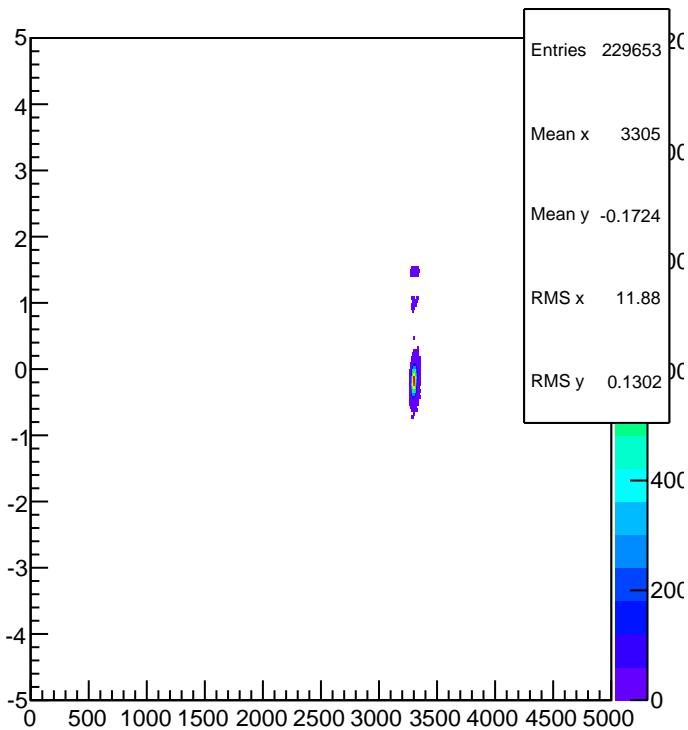
Up Fast Raster Current vs BPMA X



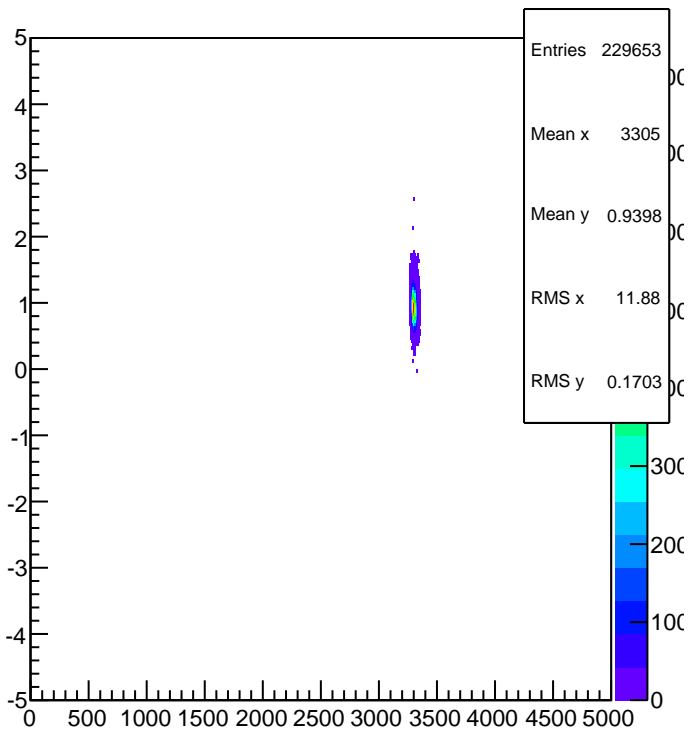
Up Fast Raster Current vs BPMB X



Up Fast Raster Current vs BPMA Y



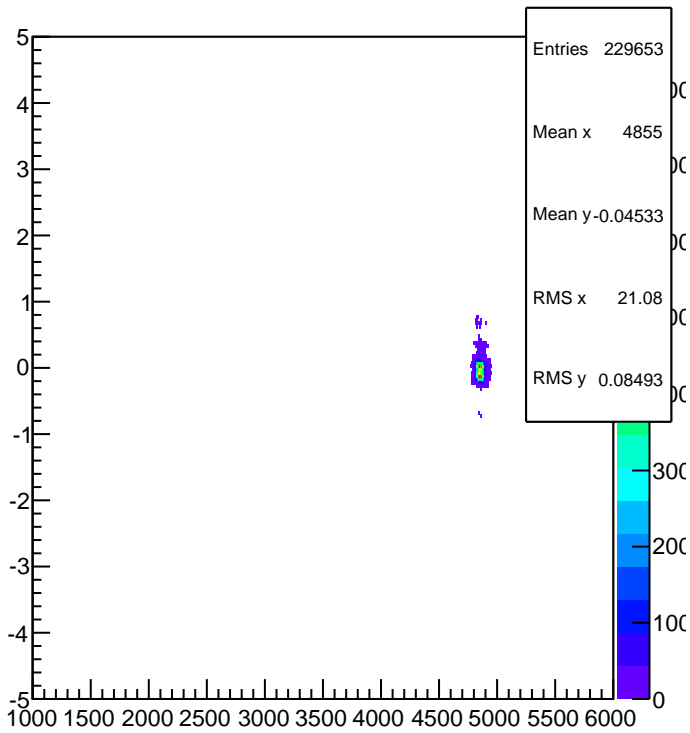
Up Fast Raster Current vs BPMB Y



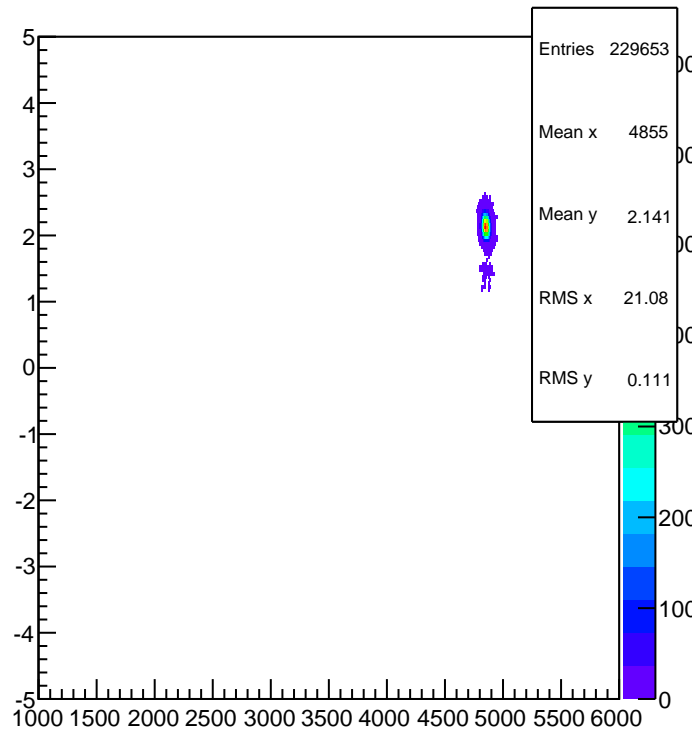
Run #21970

Down Raster/BPM Sync

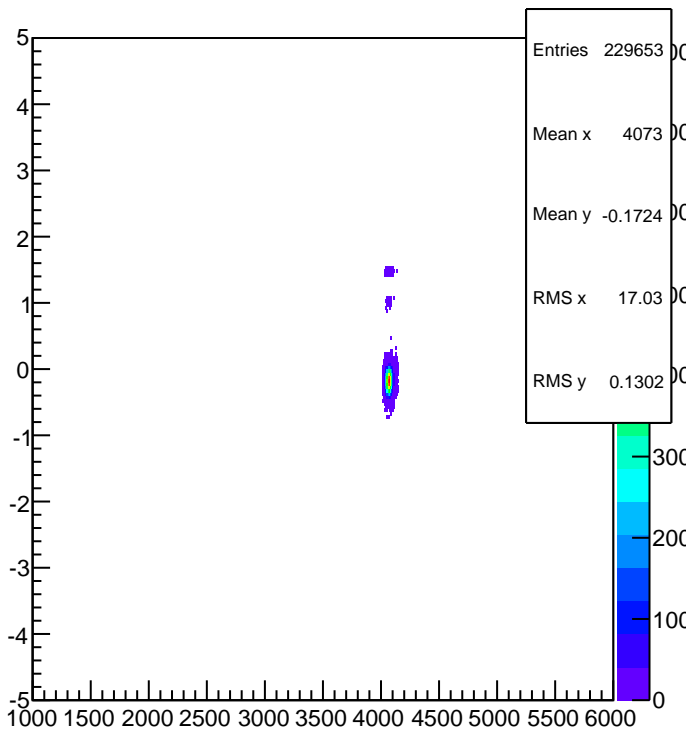
Down Fast Raster Current vs BPMA X



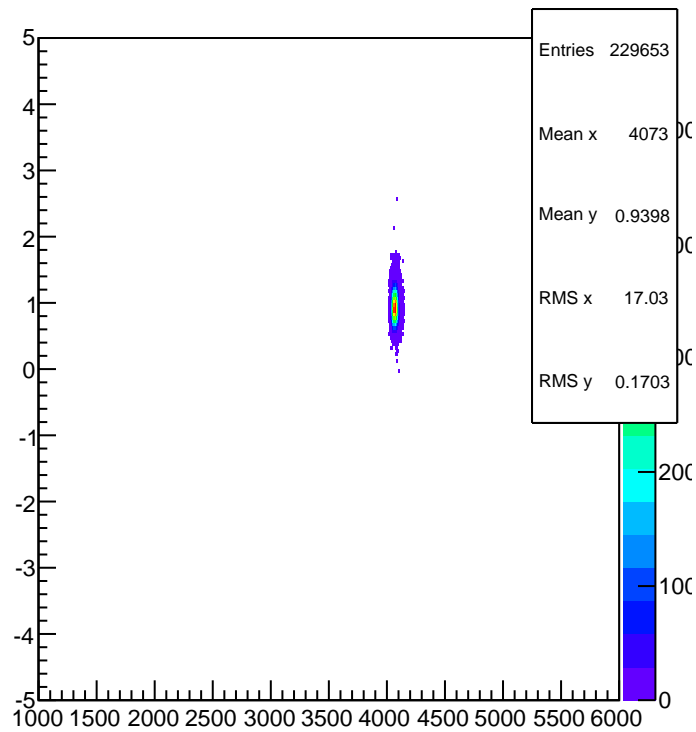
Down Fast Raster Current vs BPMB X



Down Fast Raster Current vs BPMA Y

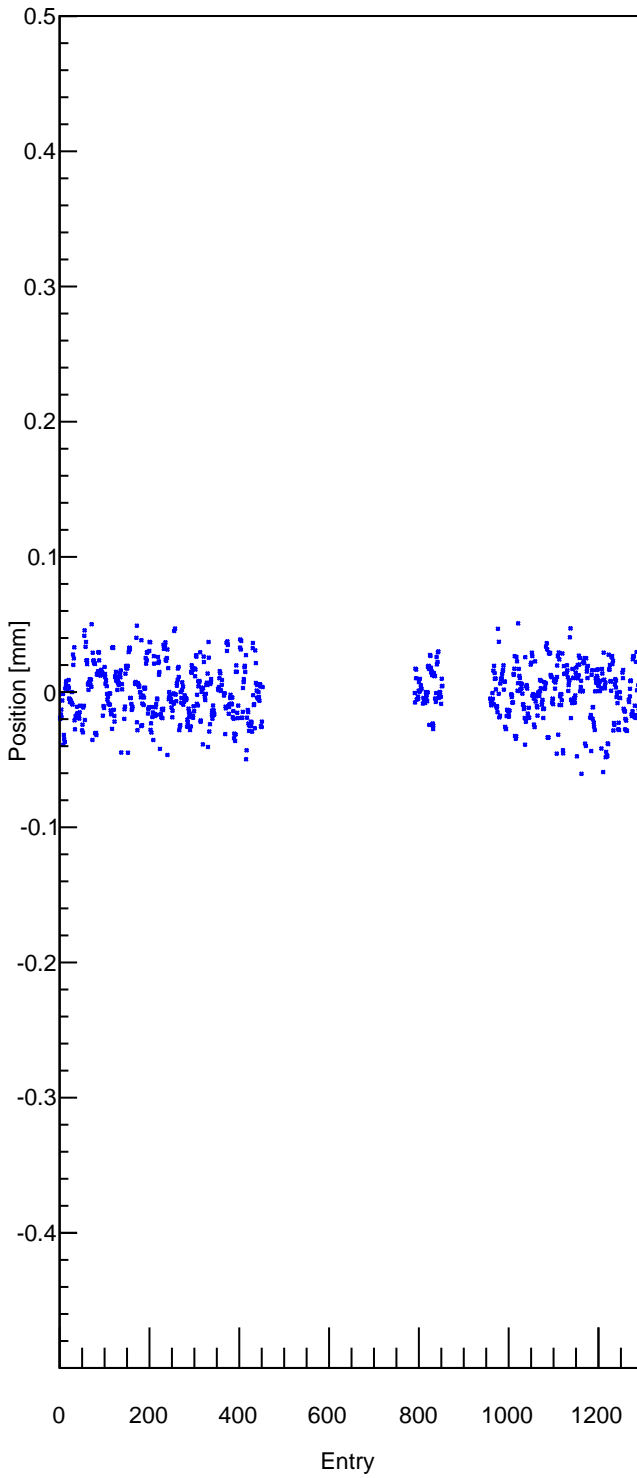


Down Fast Raster Current vs BPMB Y



Beam Energy Stability

Horizontal Motion at 1C12



Vertical Motion at 1C12

