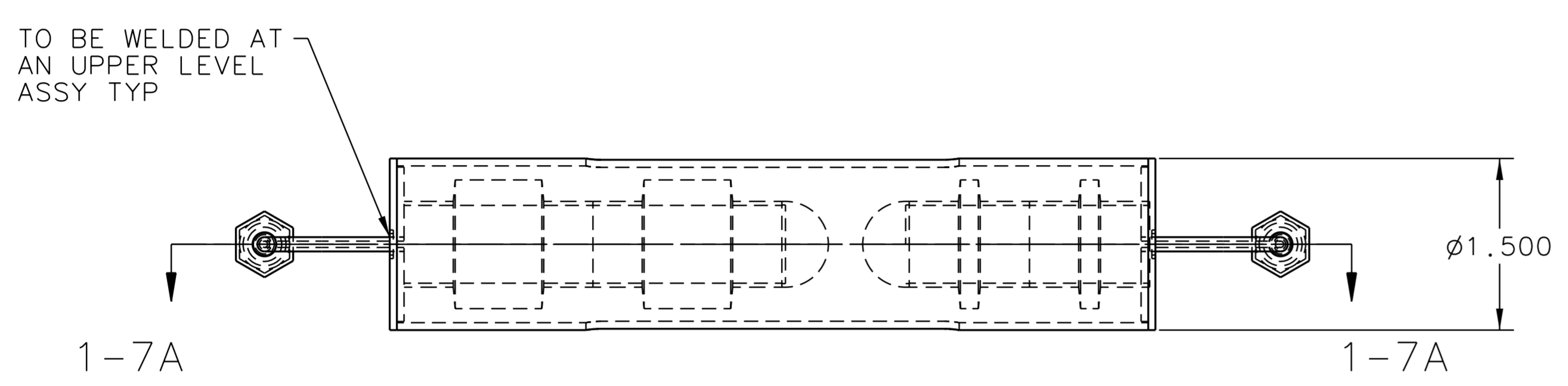
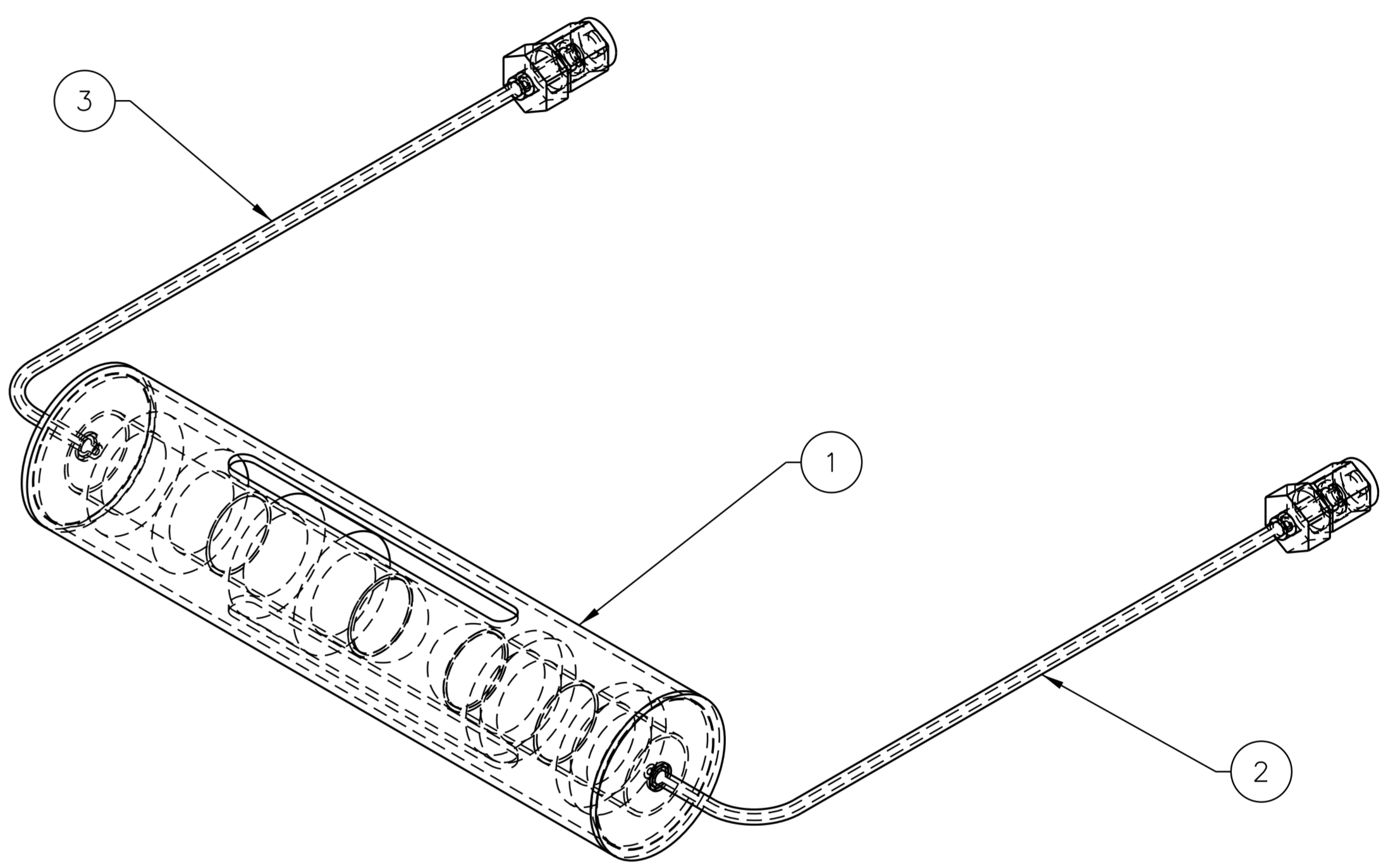


REVISION HISTORY				
ZONE	REV	DESCRIPTION	DATE	APPROVED

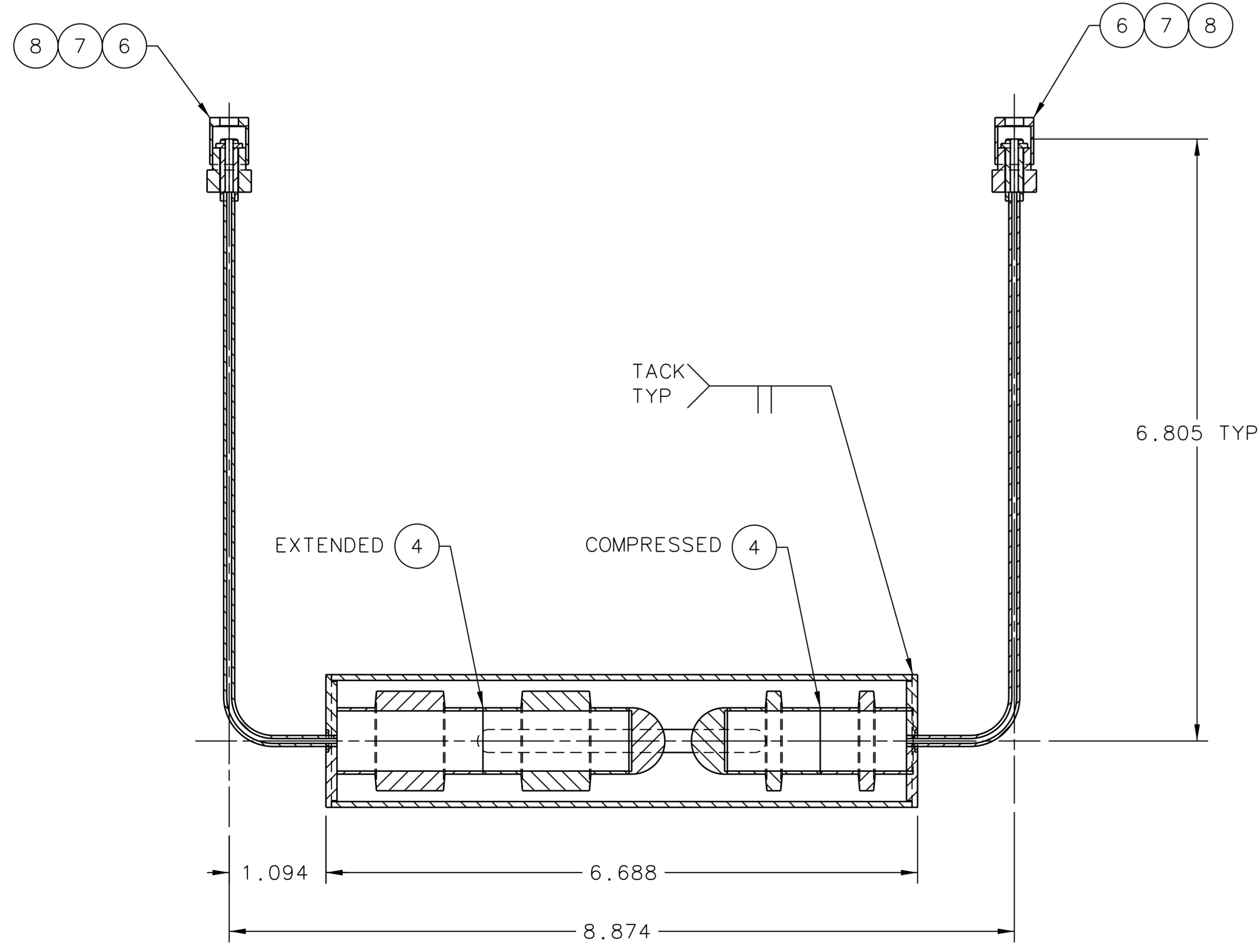
8 7 6 5 4 3 2 1



FRONT VIEW 1-7D



ISO VIEW 1-3B



SECT VIEW 1-7A

QTY REQD	ITEM NO.	PART OR IDENTIFYING NO.	NOMENCLATURE OR DESCRIPTION	MATERIAL SPECIFICATION	NOTES
2	8	SWAGELOK SS-2-VCR-3	1/8 IN VCR GLAND SOCKET WELD	STAINLESS STEEL	-
2	7	SWAGELOK SS-2-VCR-4	1/8 IN VCR MALE NUT	STAINLESS STEEL	-
2	6	SWAGELOK SS-2-VCR-1	1/8 IN VCR FEMALE NUT	STAINLESS STEEL	-
-	5	-	-	-	-
2	4	A04018-03-01-1800	BELLOWS WELDMENT	STAINLESS STEEL	-
1	3	A04018-03-01-1603	LOWER LEFT TUBE	STAINLESS STEEL	-
1	2	A04018-03-01-1602	LOWER RT TUBE	STAINLESS STEEL	-
1	1	A04018-03-01-1601	TUBE 1.5 OD X 6.56 LG	STAINLESS STEEL	1

DOCUMENT CONTROL STAMP	DIM & TOL PER ASME Y14.5 UNLESS OTHERWISE SPECIFIED DIMENSIONS ARE IN INCHES TOLERANCES ARE: FRACTIONS DECIMAL ANGLES ± N/A .XX ± .01 ± .50° .XXX ± .005	TRACKING NO. N/A		 Thomas Jefferson National Accelerator Facility NEWPORT NEWS, VIRGINIA UNITED STATES DEPARTMENT OF ENERGY
		APPROVALS	DATE	
MATERIAL SEE PARTS LIST	THIRD ANGLE PROJECTION	DRAWN J. MILLER	14SEP06	HALL A - HE3HE4 TARGET - TARGET CELL MOUNT CARTRIDGE ASSY FOR LOWER
FINISH MACHINED SURFACES DEBURR & BREAK ALL SHARP EDGES		CHECKED A. CAVALYA	25SEP06	
DO NOT SCALE DRAWING		APPROVED J. COMEZ	26SEP06	
		APPROVED P. BRINDZA	25SEP06	SCALE 1:1 USED ON ASSY NO. A04018-03-01-1300 SHEET 1 OF 1

8 7 6 5 4 3 2 1