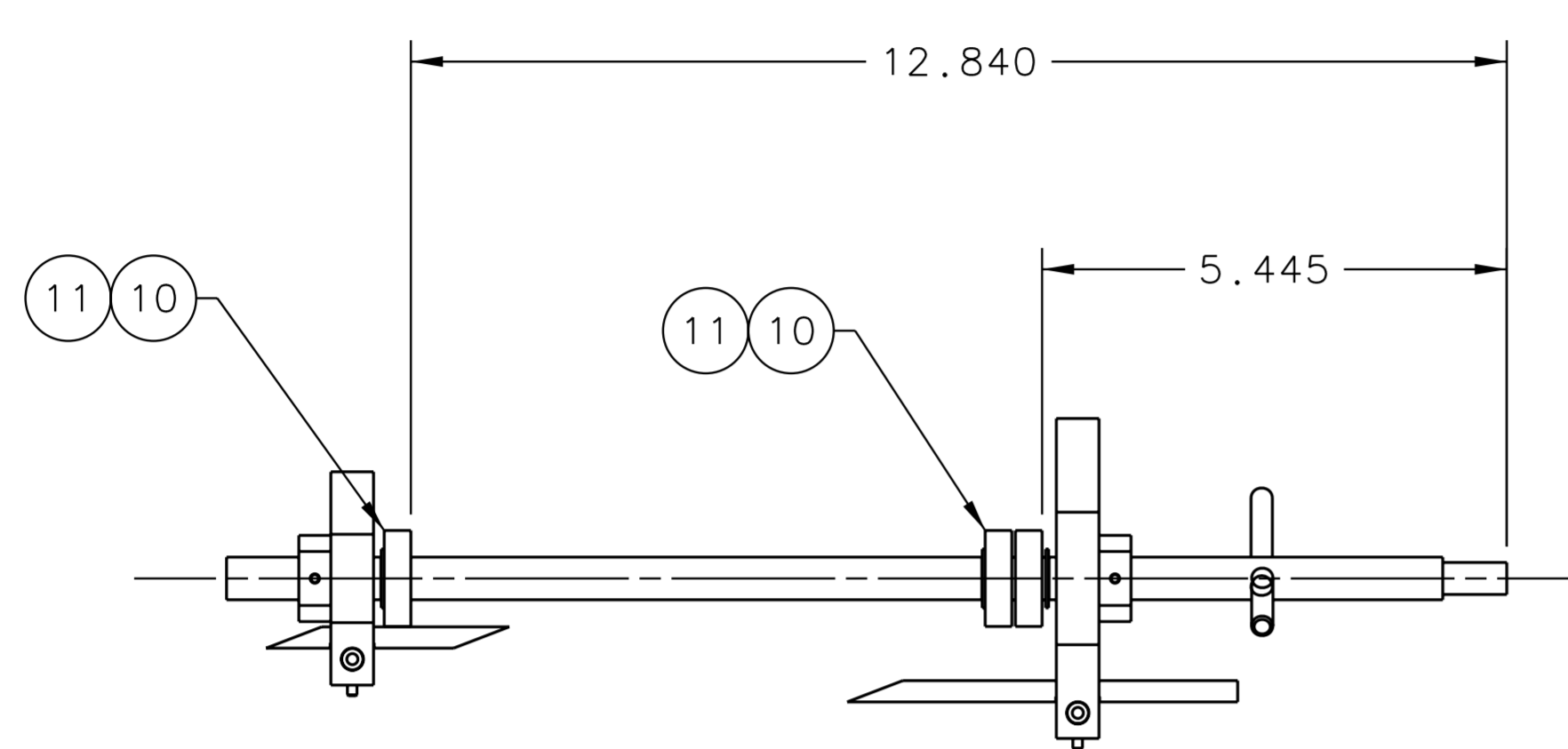
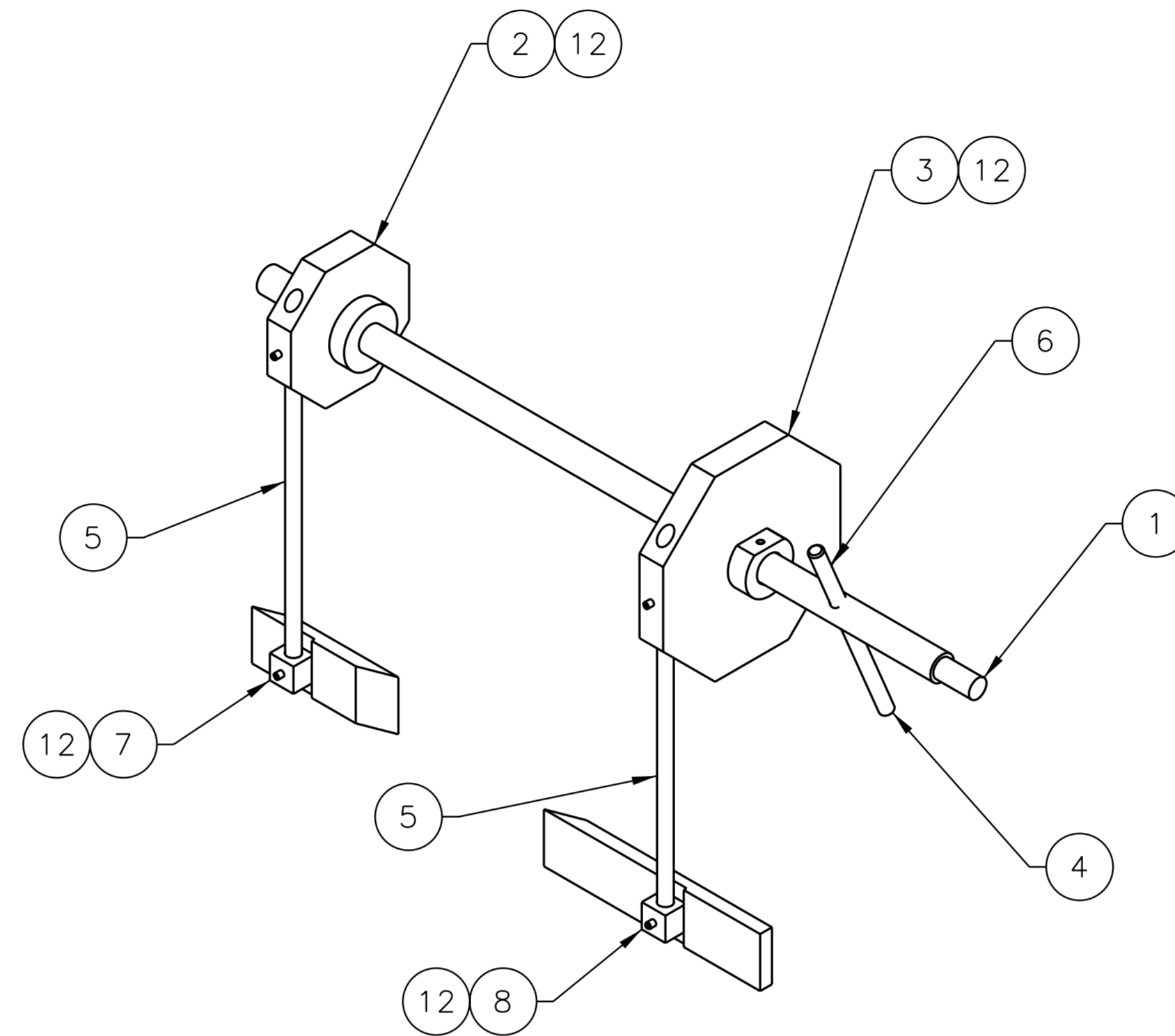


REVISION HISTORY				
ZONE	REV	DESCRIPTION	DATE	APPROVED

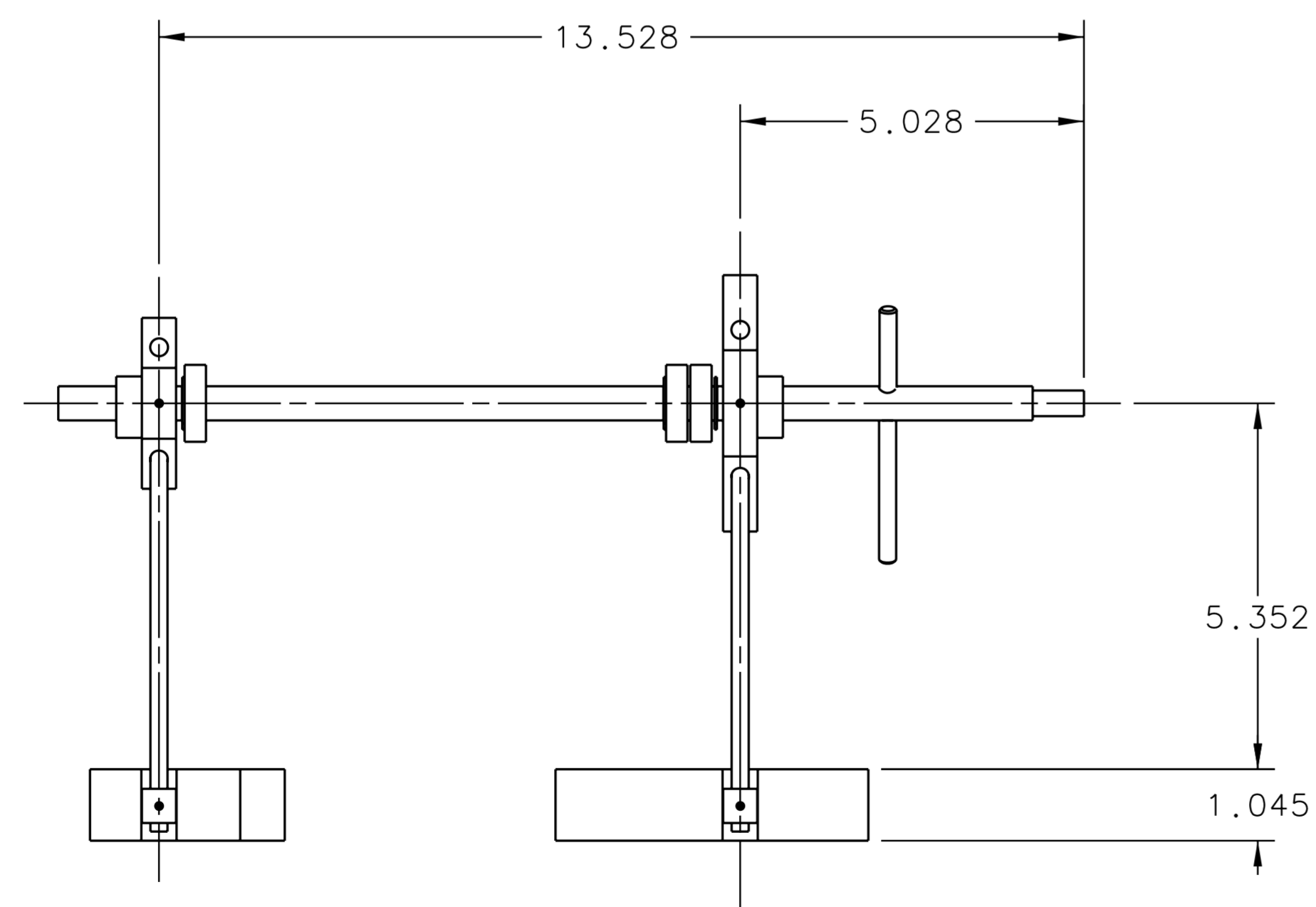


TOP VIEW 1-7C

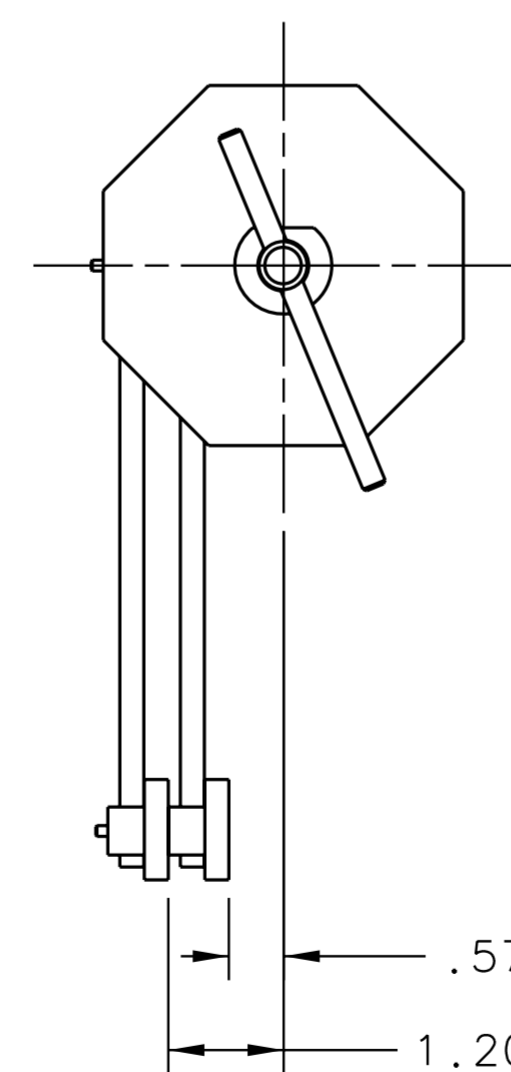


ISO VIEW 1-4C

NOTES:
 1. BEARINGS TO BE CERAMIC BALL FULL COMPLIMENT, TUNGSTEN DISULFIDE DRY FILM LUBRICANT WITH NO SEALS. CHAMPION BEARING CO. 1-800-900-2236



FRONT VIEW 1-7A



RT SIDE VIEW 1-5A

QTY REQD	ITEM NO.	PART OR IDENTIFYING NO.	NOMENCLATURE OR DESCRIPTION	MATERIAL SPECIFICATION	NOTES
4	11	-	HEX SOC HD HALF DOG PT SET SCREW #4-40 X .25 IN LG	STAINLESS STEEL	-
3	10	SDP/S1 S73HW2-100-050	RETAINING RING EXT FOR .500 DIA BEARING	STAINLESS STEEL	-
3	9	CHAMPION SR8CBFCT7	BEARING, .50 IN BORE X 1.125 X .3125	SEE NOTE	1
-	8	-	-	-	-
1	8	A0418-03-01-2000	HRSBL BACKWARD COLL WLDMNT FOR LOWER	COMPOSITE	-
1	7	A0418-03-01-1900	HRSBL FORWARD COLL WLDMNT FOR LOWER	COMPOSITE	-
1	6	A0418-03-01-1406	PIN .25 DIA X 1.25 LG	G-10	-
2	5	A0418-03-01-1405	TUBE .25 OD X 6.5 LG	STAINLESS STEEL	-
1	4	A0418-03-01-1404	PIN .25 DIA X 2.50 LG	STAINLESS STEEL	-
1	3	A0418-03-01-1403	OCTAGON 04	ALUMINUM	-
1	2	A0418-03-01-1402	OCTAGON 02	ALUMINUM	-
1	1	A0418-03-01-1401	INNER SHAFT	STAINLESS STEEL	-

DOCUMENT CONTROL STAMP	DIM & TOL PER ASME Y14.5 UNLESS OTHERWISE SPECIFIED DIMENSIONS ARE IN INCHES TOLERANCES ARE: FRACTIONS DECIMAL ANGLES ± N/A .XX ± .01 ± .50° .XXX ± .005	TRACKING NO. N/A		 Thomas Jefferson National Accelerator Facility NEWPORT NEWS, VIRGINIA UNITED STATES DEPARTMENT OF ENERGY
		APPROVALS	DATE	
MATERIAL SEE PARTS LIST	THIRD ANGLE PROJECTION	DRAWN J. MILLER	18SEP06	HALL A - HE3HE4 TARGET - TARGET CELL HRSBL COLLIMATOR 21 DEG ASSY LOWER
FINISH MACHINED SURFACES UNLESS OTHERWISE NOTED DEBURR & BREAK ALL SHARP EDGES		CHECKED A. CAVALYA	27SEP06	
DO NOT SCALE DRAWING		APPROVED P. BRINDZA	27SEP06	
		APPROVED J. COMEZ	27SEP06	SIZE DWG. NO. D A04018-03-01-1400 SCALE 1:2 USED ON ASSY NO. A04018-03-01-1200 SHEET 1 OF 1