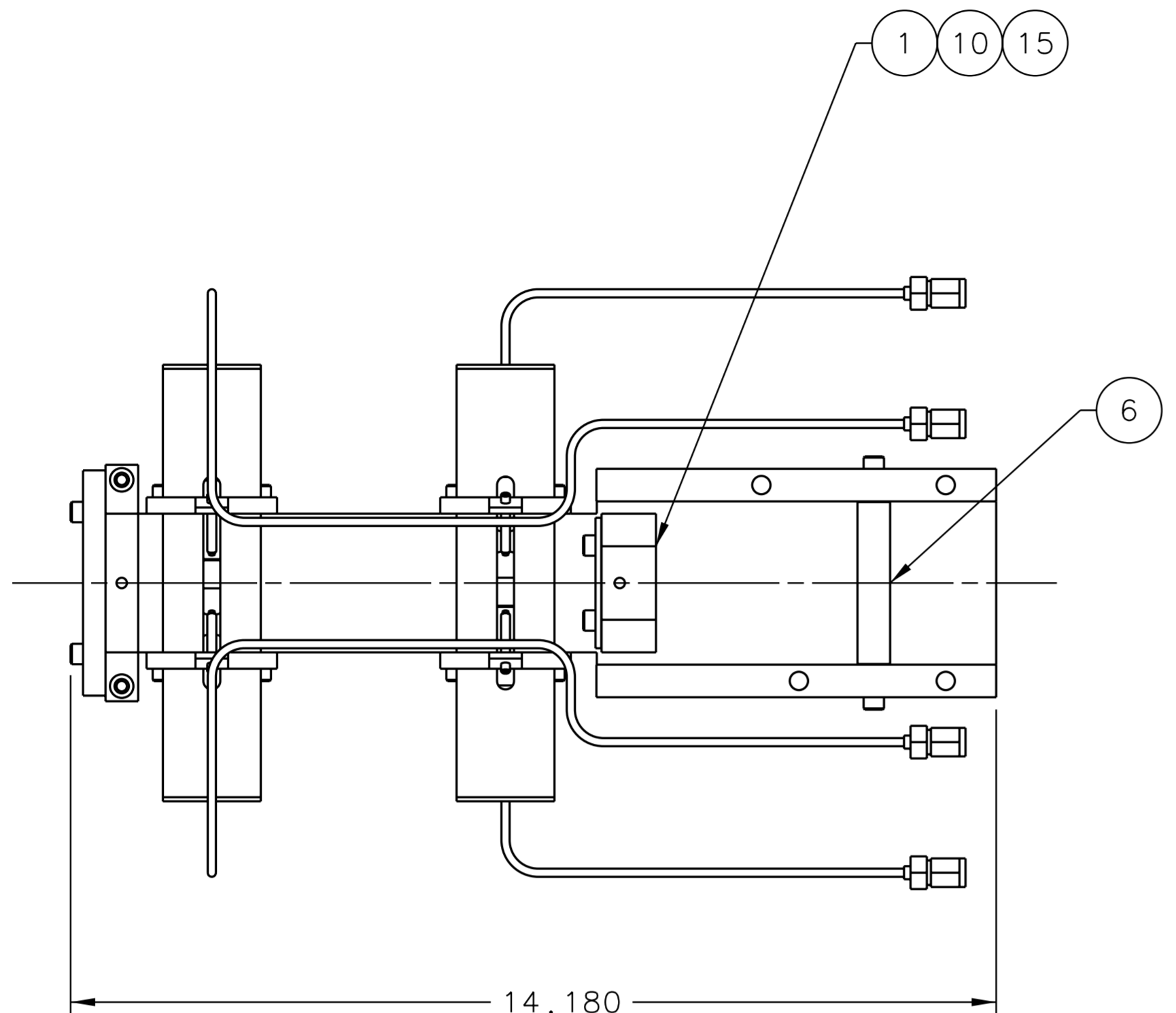
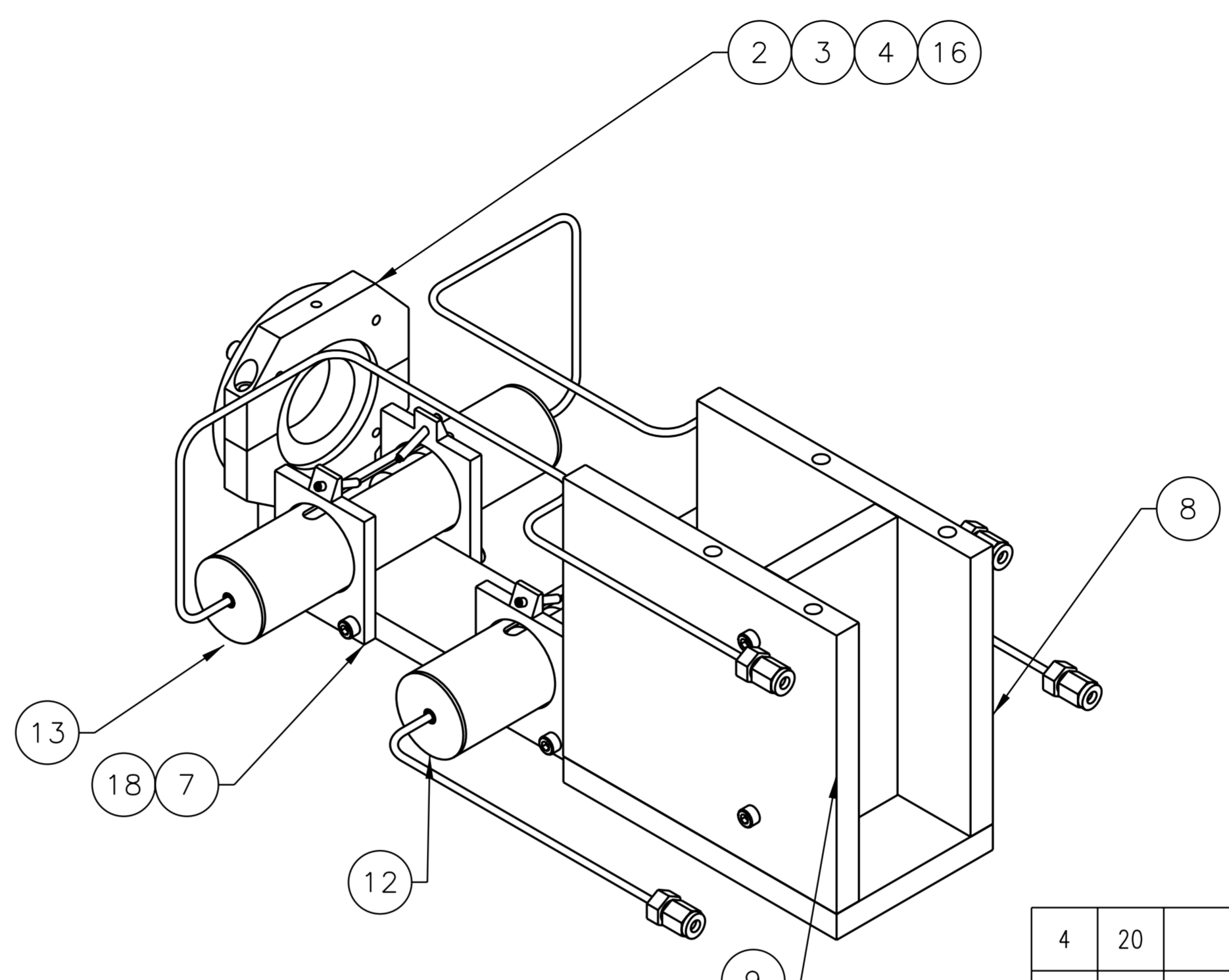


REVISION HISTORY				
ZONE	REV	DESCRIPTION	DATE	APPROVED

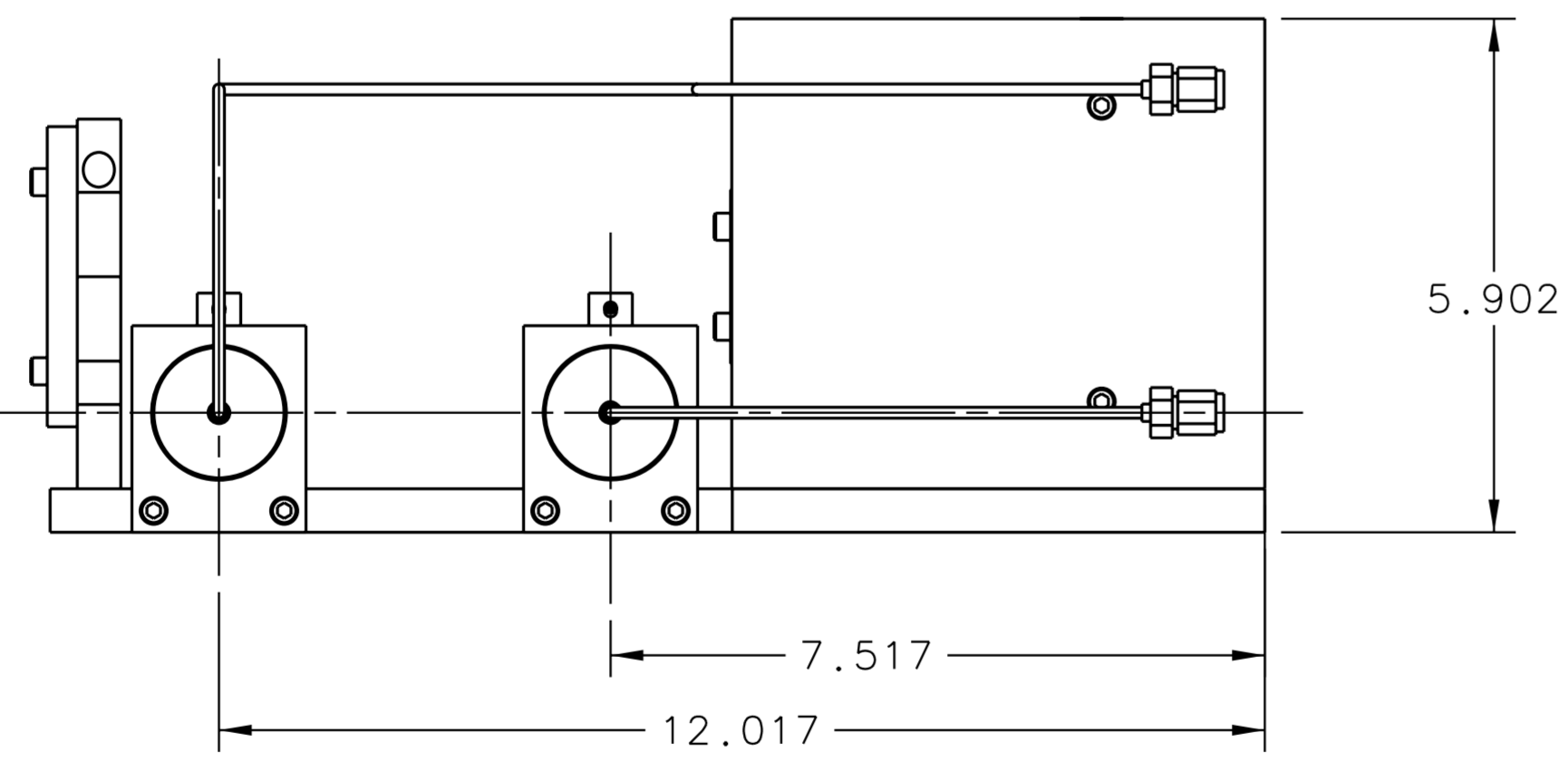


FRONT VIEW 1-7C

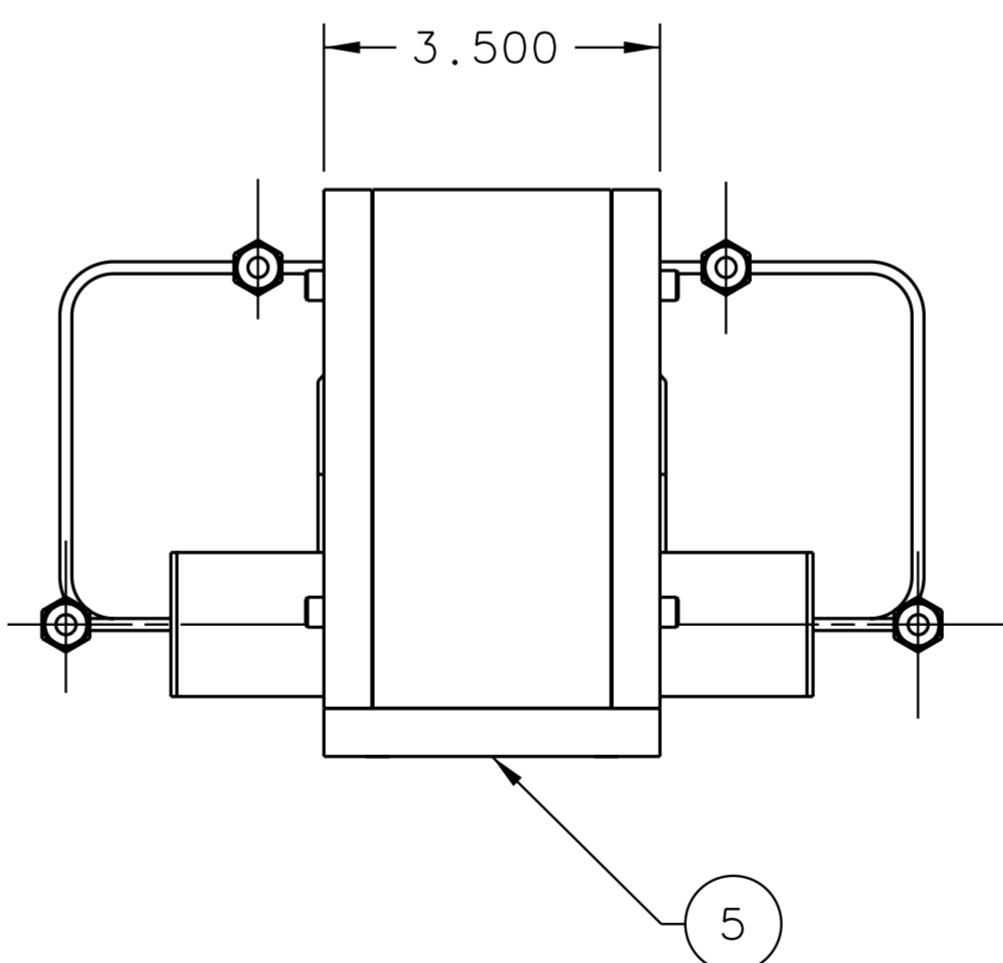


ISO VIEW 1-4C

NOTES:
 1. BEARINGS TO BE CERAMIC BALL FULL COMPLIMENT, TUNGSTEN DISULFIDE DRY FILM LUBRICANT WITH NO SEALS.
 CHAMPION BEARING CO. 1-800-900-2236



FRONT VIEW 1-7A



RT SIDE VIEW 1-4A

QTY REQD	ITEM NO.	PART OR IDENTIFYING NO.	NOMENCLATURE OR DESCRIPTION	MATERIAL	NOTES
4	20	-	SHCS #10-32 X .75 IN LG	STAINLESS STEEL	-
22	19	-	SHCS #10-32 X .50 IN LG	STAINLESS STEEL	-
4	18	-	HEX SOC HD HALF DOG PT SET SCREW #6-32 X 1.0 IN LG	STAINLESS STEEL	-
-	17	-	-	-	-
1	16	CHAMPION SR24CBFCT7	BEARING, 1.50 IN BORE X 2.625 OD X .5625	SEE NOTE	1
2	15	CHAMPION SR8CBFCT7	BEARING, .50 IN BORE X 1.125 OD X .3125	SEE NOTE	1
-	14	-	-	-	-
1	13	A04018-03-01-1700	CARTRIDGE ASSY FOR UPPER	COMPOSITE	-
1	12	A04018-03-01-1600	CARTRIDGE ASSY FOR LOWER	COMPOSITE	-
-	11	-	-	-	-
1	10	A04018-03-01-1310	RETAINER RING	ALUMINUM	-
1	9	A04018-03-01-1309	RT PLATE	ALUMINUM	-
1	8	A04018-03-01-1308	LEFT PLATE	ALUMINUM	-
4	7	A04018-03-01-1307	CARTRIDGE HOLDER	ALUMINUM	-
1	6	A04018-03-01-1306	BRACE	ALUMINUM	-
1	5	A04018-03-01-1305	BOTTOM MOUNT PL	ALUMINUM	-
1	4	A04018-03-01-1304	BEARING HOLDER LG TOP	ALUMINUM	-
1	3	A04018-03-01-1303	BEARING HOLDER LG RET RING	ALUMINUM	-
1	2	A04018-03-01-1302	BEARING HOLDER LG	ALUMINUM	-
1	1	A04018-03-01-1301	BEARING HOLDER	ALUMINUM	-

DOCUMENT CONTROL STAMP	DIM & TOL PER ASME Y14.5 UNLESS OTHERWISE SPECIFIED DIMENSIONS ARE IN INCHES TOLERANCES ARE: FRACTIONS ± N/A DECIMAL .XX ± .01 ANGLES ± .50° XXX ± .005	TRACKING NO. N/A		 Thomas Jefferson National Accelerator Facility NEWPORT NEWS, VIRGINIA UNITED STATES DEPARTMENT OF ENERGY
		APPROVALS	DATE	
MATERIAL SEE PARTS LIST	THIRD ANGLE PROJECTION	DRAWN J. MILLER	13SEP06	HALL A - HE3HE4 TARGET - TARGET CELL HRSBL COLLIMATOR 21 DEG ASSY MOUNT
FINISH UNLESS MACHINED SURFACES N/A OTHERWISE DEBURR & BREAK ALL SHARP EDGES		CHECKED		
DO NOT SCALE DRAWING		APPROVED		SCALE 1:2 USED ON ASSY NO. A04018-03-01-1200 SHEET 1 OF 1