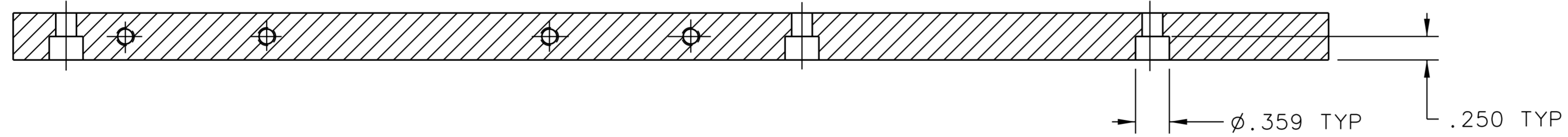
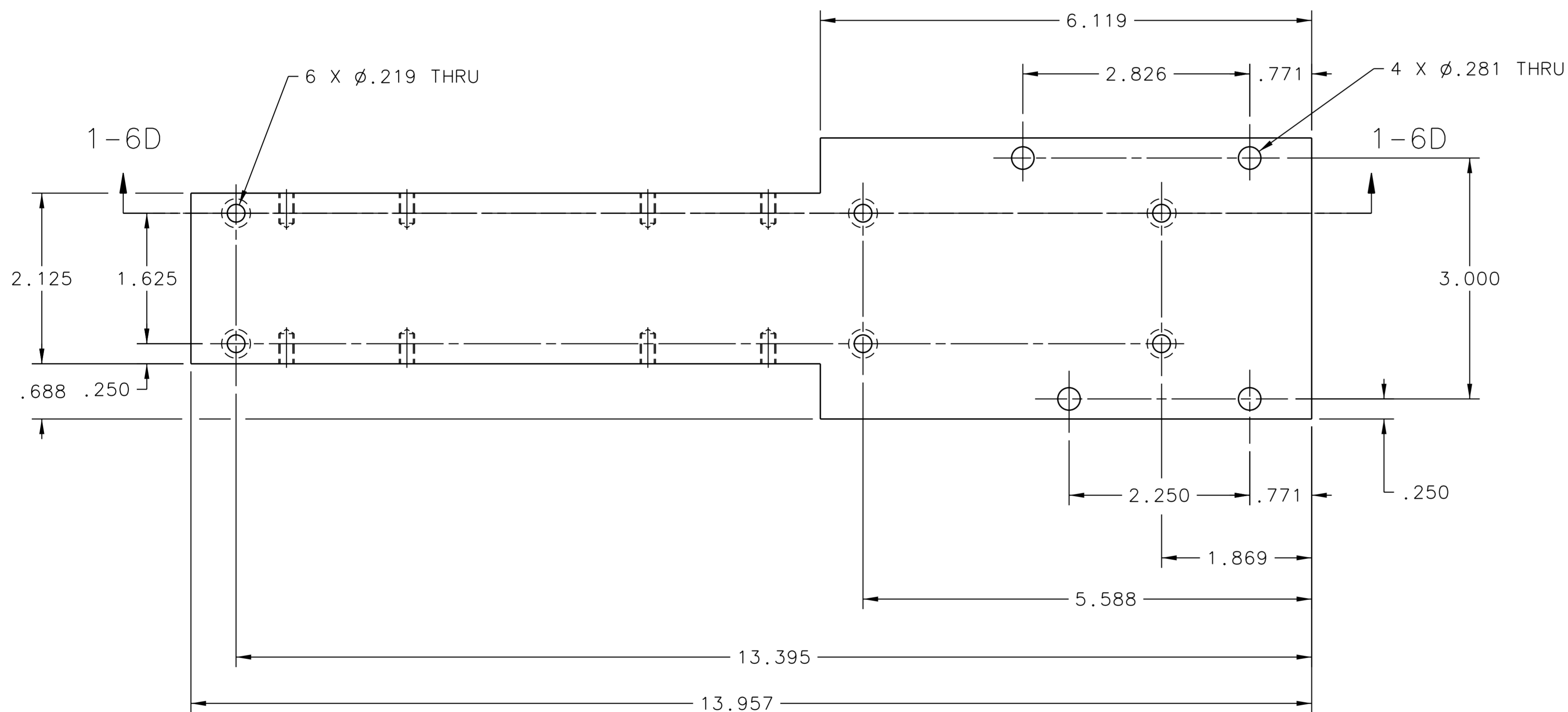


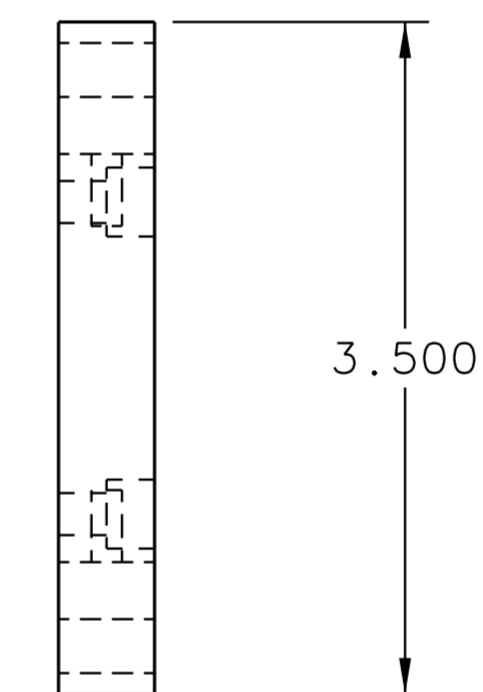
REVISION HISTORY				
ZONE	REV	DESCRIPTION	DATE	APPROVED



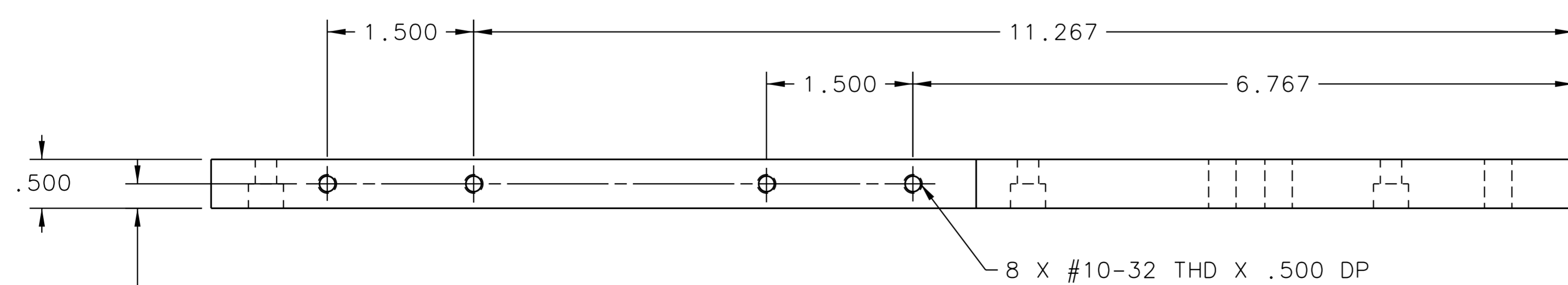
SECT VIEW 1-6D



TOP VIEW 1-6B



RT SIDE VIEW 1-3B



FRONT VIEW 1-6A

NOTES:
1. APPROX. WEIGHT 2 LBS.

DOCUMENT CONTROL STAMP	DIM & TOL PER ASME Y14.5 UNLESS OTHERWISE SPECIFIED DIMENSIONS ARE IN INCHES TOLERANCES ARE: FRACTIONS DECIMAL ANGLES \pm N/A \pm .XX \pm .01 \pm .50° \pm .XXX \pm .005	TRACKING NO. N/A		 Thomas Jefferson National Accelerator Facility NEWPORT NEWS, VIRGINIA UNITED STATES DEPARTMENT OF ENERGY
		APPROVALS	DATE	
MATERIAL ALUMINUM	THIRD ANGLE PROJECTION	DRAWN J. MILLER	13SEP06	HALL A - HE3HE4 TARGET - TARGET CELL MOUNT BOTTOM MOUNT PL SIZE DWG. NO. A04018-03-01-1305 SCALE 1:1 USED ON ASSY NO. A04018-03-01-1300 SHEET 1 OF 1
FINISH MACHINED SURFACES DEBURR & BREAK ALL SHARP EDGES	UNLESS OTHERWISE NOTED	CHECKED A. CAVALYA	27SEP06	
DO NOT SCALE DRAWING		APPROVED J. COMEZ	26SEP06	
		APPROVED P. BRINDZA	25SEP06	