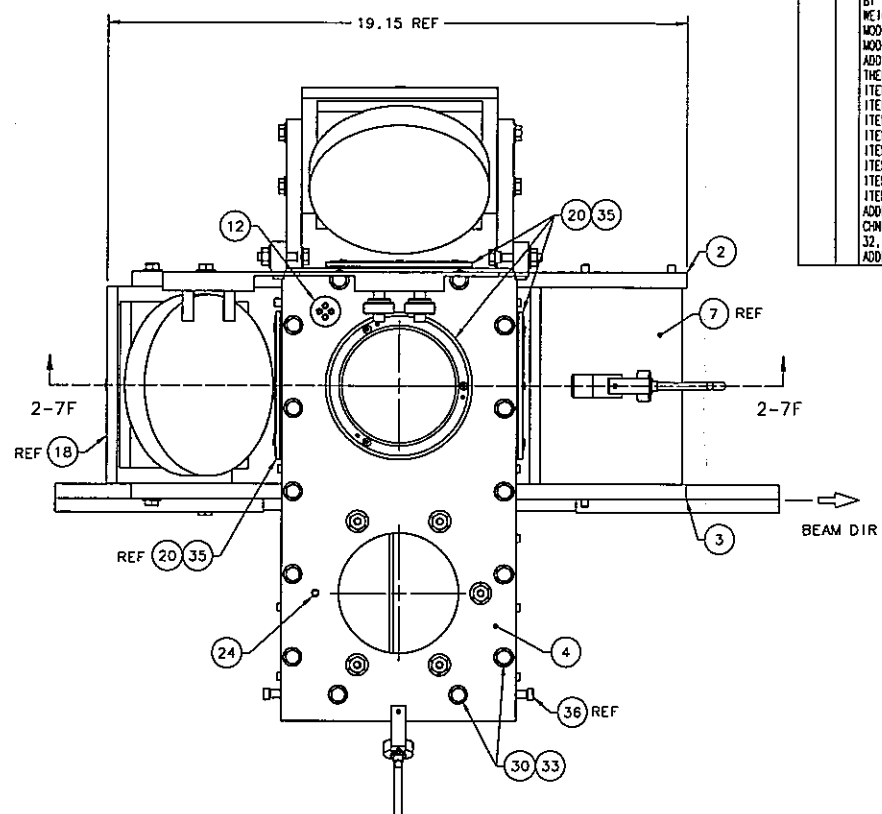
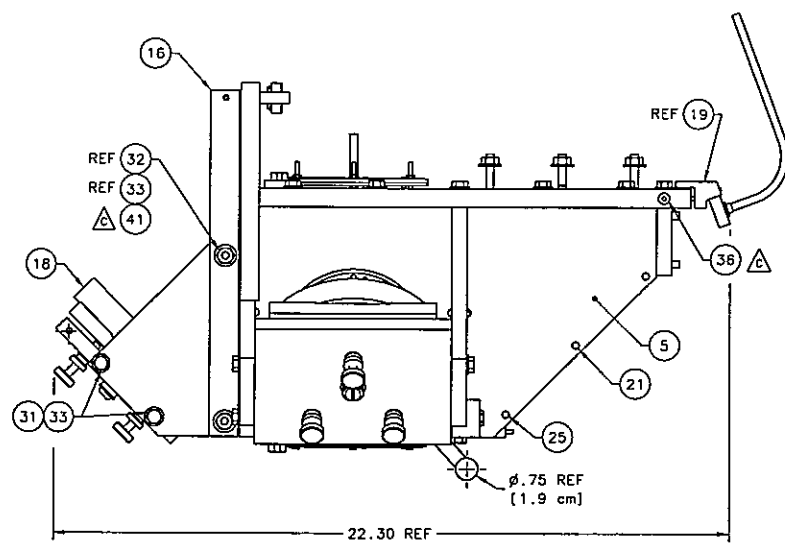


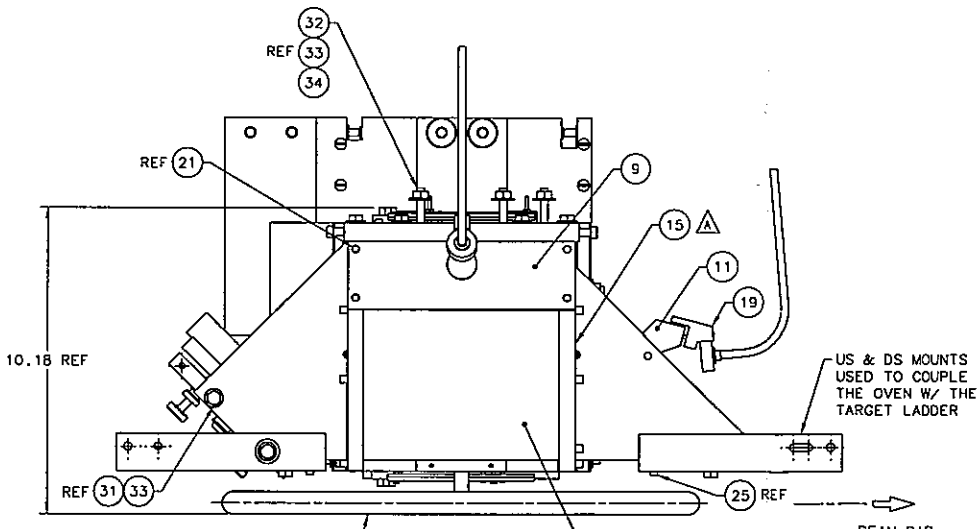
ISO VIEW 1-7F



TOP VIEW 1-4E



L SIDE VIEW 1-7B
(LOOKING DOWNSTREAM)



FRONT VIEW 1-4B

ZONE	REV	DESCRIPTION	DATE	APPROVED	ZONE	REV	DESCRIPTION	DATE	APPROVED
ALL	C	NITRONIC 60 HELICOIL INSERTS WERE ADDED BY VENDOR IN ALL THREADED HOLES. WEIGHT GAIN FROM 29 LBS TO 32 LBS. MOD ITEM 4 TO REV C, ITEM 11 TO REV B. MODIFIED ITEM 16 TO REV A. ADDED NEW ITEMS 17 & 29. ITEM 28 WAS NEW THEN MODIFIED TO REV A. ITEM 21 QTY 16 WAS QTY 17. ITEM 25 QTY 4 WAS QTY 3. ITEM 30 QTY 15 WAS QTY 18. ITEM 31 QTY 9 WAS QTY 8. ITEM 32 QTY 19 WAS QTY 15. ITEM 33 QTY 40 WAS QTY 36. ITEM 35 QTY 15 WAS QTY 18. ITEM 36 QTY 4 WAS QTY 2. ADDED NEW ITEMS 37, 38, 39, 40 & 41. CHNG PART NO & MATL ON HWY ITEMS 30, 31, 32, 33, & 35 FROM CERAMIC TO STLS STL. ADDED R SIDE AND REAR VIEWS ON SH 2.	01 DEC 08	SME	ALL	A	MODIFIED ITEMS 1, 2, 3, 4 & 9. MODIFIED ITEM 5, QTY WAS CHANGED FROM 2 TO 1. ADDED NEW ITEM 15.	17 AUG 07	SME
1-4C	B	CHANGED MATERIAL ON ITEMS 1-11 & 15 FROM ALUMINA-SILICA TYPE 2-500 TO CS85 STRUCTURAL INSULATION. TITLE LINE NAME CHANGED FROM ZIRCAR OVEN ASSEMBLY TO CS85 OVEN ASSEMBLY. DWG NUMBER CHANGED ON ITEM 20 WAS A06010-03-04-1400 TO A06010-03-04-0700. WEIGHT INCREASED FROM 22 LBS TO 29 LBS. NEW ITEM 16 ADDITIONAL SUPPORT FOR THE OVEN. NEW ITEM 36 SHOULDER SCREW (2 PL.) MOD ITEM 34 NEW DWG A06010-03-04-1213 QTY CHNG ON ITEM 33 FROM 32 TO 36 RECD QTY CHNG ON ITEM 30 FROM 14 TO 18 RECD. MODIFIED NOTE 2 ADDING FOR A MINIMUM CLEARANCE OF 0.008 IN. NOTES 4, 5, AND 11 NO LONGER APPLY. ADDED NOTE 12.	28 NOV 07	SME				07 DEC 07	ARG

QTY	ITEM NO	PART NO	DESCRIPTION	MATERIAL	REMARKS
4	41	McMASTER-CARR 93190A546	HEX HEAD SCREW 1/4-20 UNC x 1-1/2 LG	STNLS STL	-
1	40	A06010-03-04-2000	EPR COIL ASSY	-	SH 2
4	39	-	SLOTTED PAN HEAD SCREW #10-24 UNC x .925 LG	TORLON	-
4	38	A06010-03-04-0304	CPLR TRANSV MTG POST	ALUMINUM	-
2	37	65640-54478-05	CPLR TRANSV 3/8 NUT E97110	ULTEM	-
4	35	McMASTER-CARR 97345A531	SHOULDER SCREW 1/4 SHLDR DIA, 3/8 SHLDR LG	STNLS STL	-
15	35	McMASTER-CARR 92314A110	HEX HEAD SCREW #4-40 UNC x 1/2 LG	STNLS STL	-
5	34	A06010-03-04-1213	CERAMIC THREADED ROD 1/4-20 UNC x 2-1/2 LG	MACOR	-
40	33	McMASTER-CARR 91850A029	WASHER 1/4 RGLR	STNLS STL	-
19	32	McMASTER-CARR 91850A029	NUT HEX 1/4-20 UNC	STNLS STL	-
9	31	McMASTER-CARR 93190A542	HEX HEAD SCREW 1/4-20 UNC x 1.0 LG	STNLS STL	-
15	30	McMASTER-CARR 93190A544	HEX HEAD SCREW 1/4-20 UNC x 1.25 LG	STNLS STL	-
1	29	A06010-03-04-1217	PLATE FOR EPR	G10	-
1	28	A06010-03-04-1215	MOUNT FOR LADDER US	ULTEM	-
1	27	MELLES GRIOT 02 WKB 003	WINDOW 25 MM DIA x 3 MM THK	OPT GLASS BK7	SH 2
5	26	MELLES GRIOT 02 WKB 009	WINDOW 100 MM DIA x 6 MM THK	OPT GLASS BK7	SH 2
4	25	McMASTER-CARR 8446K15	DOWEL 1/4 DIA x 1.0 LG	VERY HIGH TEMP NONPOROUS HIGH-ALUMINA CERAMIC	-
1	24	McMASTER-CARR 8446K15	DOWEL 1/4 DIA x 5/8 LG	VERY HIGH TEMP NONPOROUS HIGH-ALUMINA CERAMIC	-
2	23	McMASTER-CARR 8446K11	DOWEL 1/8 DIA x 1.0 LG	VERY HIGH TEMP NONPOROUS HIGH-ALUMINA CERAMIC	SH 2
1	22	McMASTER-CARR 8446K11	DOWEL 1/8 DIA x 3/4 LG	VERY HIGH TEMP NONPOROUS HIGH-ALUMINA CERAMIC	SH 2
16	21	McMASTER-CARR 8446K15	DOWEL 1/4 DIA x 1-1/4 LG	VERY HIGH TEMP NONPOROUS HIGH-ALUMINA CERAMIC	-
6	20	A06010-03-04-0700	PICKUP COIL PUMPING ASSY	-	-
2	19	A06010-03-04-0600	SPECTRUM ANALYZER MIN	-	-
2	18	A02013-03-05-0500	MIRROR ASSY GEN	-	-
1	17	A06010-03-04-1215	MOUNT FOR LADDER DS	ULTEM	-
2	16	A06010-03-04-1214	VERTICAL SUPPORT PL	G10	-
1	15	A06010-03-04-1212	CS85 TRANSVERSE WALL DS	CS85 STRUCTURAL INSULATION	-
1	14	A06010-03-04-0116	WORKING CELL 3.0 IN DIA TRANS/VERT EXP: TRANS / AY	GLASS	SH 2
1	13	A06010-03-04-0117	WORKING CELL 3.0 IN DIA TRANS/LONG EXP: DZN / EE'D	GLASS	SH 2
2	12	A06010-03-04-0112	RTD FEED THRU	CERAMIC	-
1	11	A06010-03-04-1211	CS85 BLOCK SA MOUNT	CS85 STRUCTURAL INSULATION	-
1	10	A06010-03-04-1210	CS85 BAFFLE PLATE	CS85 STRUCTURAL INSULATION	SH 2
1	9	A06010-03-04-1209	CS85 END COVER SM	CS85 STRUCTURAL INSULATION	-
1	8	A06010-03-04-1208	CS85 LASER BEAM STOP STATIC	CS85 STRUCTURAL INSULATION	-
1	7	A06010-03-04-1207	CS85 LASER BEAM STOP	CS85 STRUCTURAL INSULATION	-
1	6	A06010-03-04-1206	CS85 CELL RETAINER	CS85 STRUCTURAL INSULATION	SH 2
1	5	A06010-03-04-1205	CS85 TRANSVERSE WALL US	CS85 STRUCTURAL INSULATION	-
1	4	A06010-03-04-1204	CS85 TOP PLATE	CS85 STRUCTURAL INSULATION	-
1	3	A06010-03-04-1203	CS85 LONGITUDINAL WALL BR	CS85 STRUCTURAL INSULATION	-
1	2	A06010-03-04-1202	CS85 LONGITUDINAL WALL BL	CS85 STRUCTURAL INSULATION	-
1	1	A06010-03-04-1201	CS85 BOTTOM PLATE	CS85 STRUCTURAL INSULATION	SH 2

- NOTES:
- WEIGHT IS APPROXIMATELY 32 LBS.
 - ALL DOWELS TO BE REAMED IN ASSY FOR A MINIMUM CLEARANCE OF 0.008 IN.
 - GLUE DOWEL (ITEM 22) INTO LASER BEAM STOP (ITEM 7).
 - CLOSE SLIDING FIT FOR 4 DOWELS (ITEM 21) THAT LOCATE THE BOTTOM PLATE (ITEM 1) TO THE TRANSVERSE WALLS (ITEM 5).
 - SLIDING FIT FOR REMAINING (14 PL) DOWELS (ITEM 21 & ITEM 25), DOWELS (ITEM 23) AND THE DOWELS USED FOR POSITIONING SPECTRUM ANALYZERS (ITEM 19).
 - GLUE DOWEL (ITEM 24) INTO TOP PLATE (ITEM 4).
 - ALL DOWELS HAVE A STOCK DIAMETER TOLERANCE OF ±0.001. CUT 0.01 CHAMFER ON BOTH ENDS OF ALL DOWELS.
 - ITEMS NOTED WILL BE PROVIDED BY JLAB.
 - GLUE OVEN WINDOWS AND DOWELS SPECIFIED TO BE GLUED IN PLACE WITH PERMATAX SILICONE HI-TEMP FORM-A-GASKET RED.
 - A TOTAL OF 3 EA RECD FOR ITEM 1 AND ITEM 8, A TOTAL OF 7 EACH REQUIRED FOR ITEM 12. THE ADDITIONAL PARTS WILL BE USED AS SPARES.
 - CLOSE SLIDING FIT FOR THE TWO DOWELS (ITEM 25) LOCATED IN ITEM 3.
 - JLAB WILL COAT ALL INTERNAL OVEN SURFACES TWO TIMES WITH A VERY THIN, UNIFORM LAYER OF PERMATAX SILICONE HI-TEMP FORM-A-GASKET RED - CURE BETWEEN COATS. APPLY TWO COATS OF VERY HIGH TEMP FLAME PROOF FLAT BLACK PAINT AND CURE AS PER DIRECTIONS.

THIRD ANGLE PROJECTION

APPROVALS

DATE

11 AUG 07

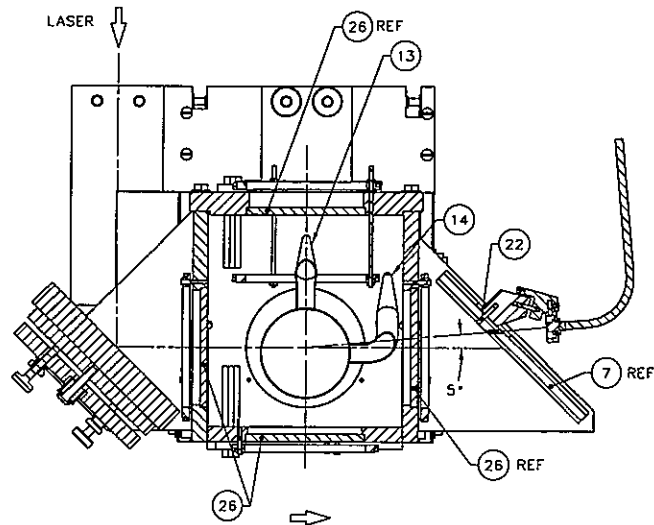
14 AUG 07

15 AUG 07

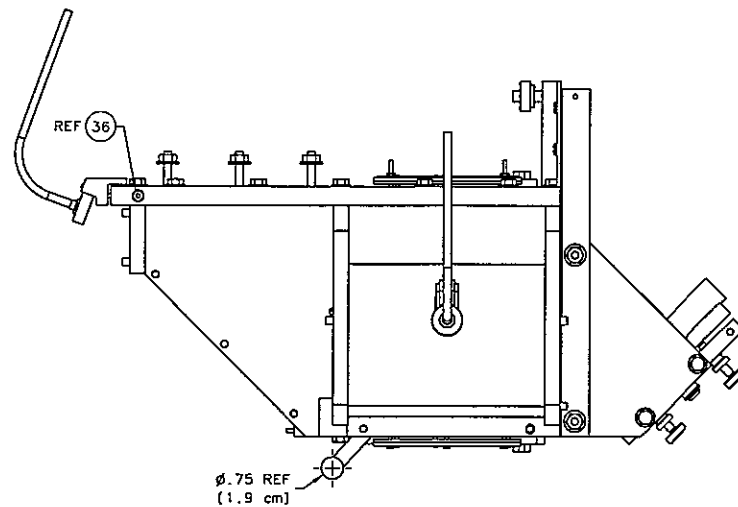
HALL A
TRANSVERSITY - EXP E06-010
TARGET SYSTEM
CS85 OVEN ASSEMBLY

A06010-03-04-1200

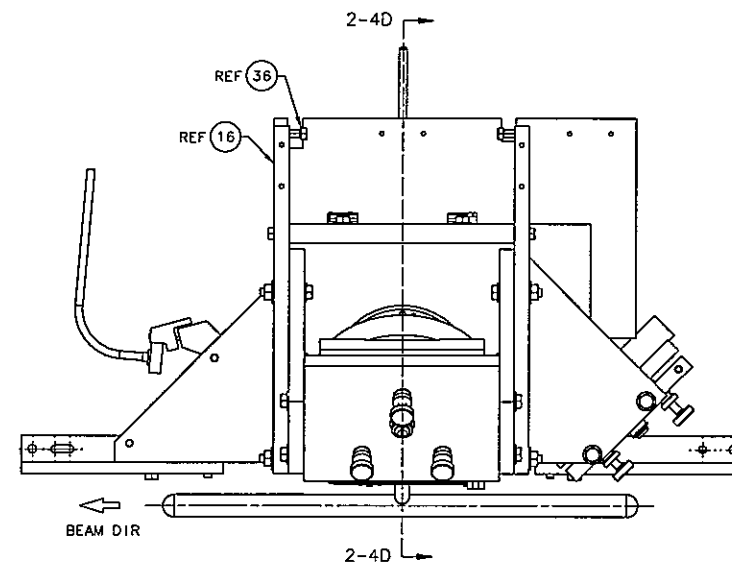
1 OF 2



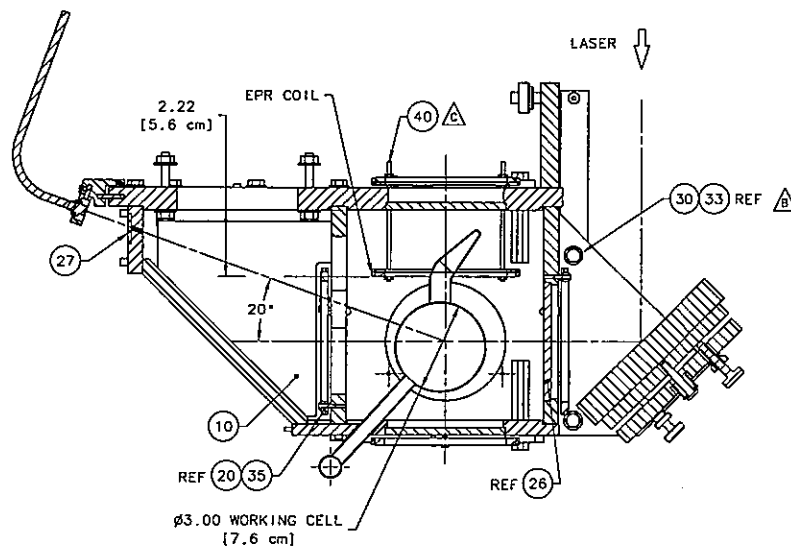
SECTION VIEW 2-7F
(1-4E)



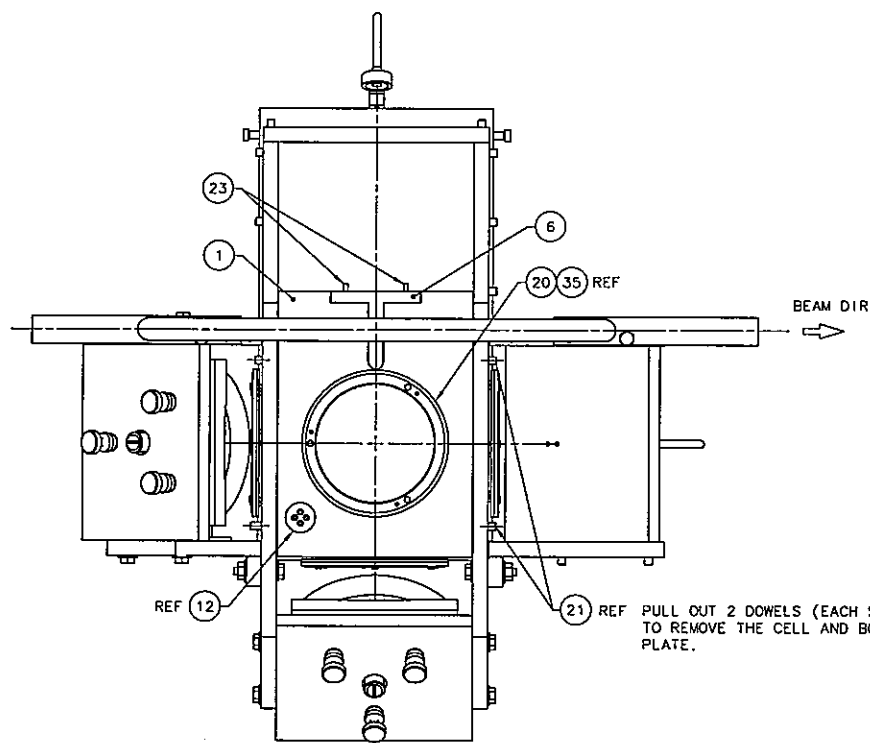
R SIDE VIEW 2-4F
(LOOKING UPSTREAM)



REAR VIEW 2-2F



SECTION VIEW 2-4D
(2-2F)
LOOKING UPSTREAM



BOTTOM VIEW 2-7A