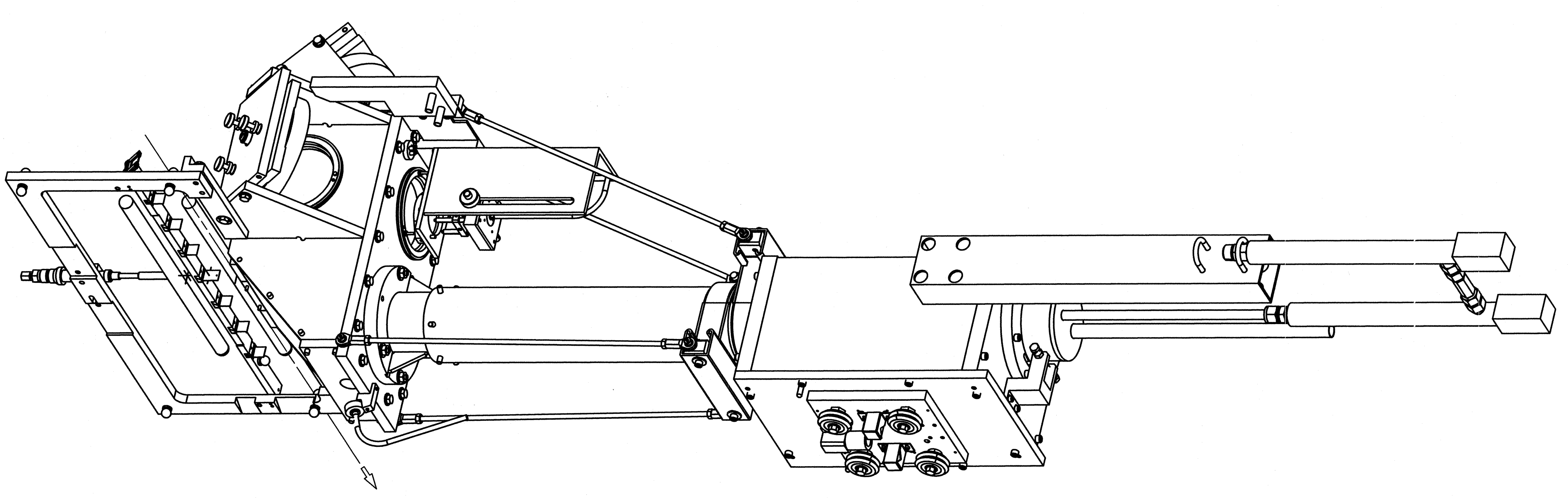
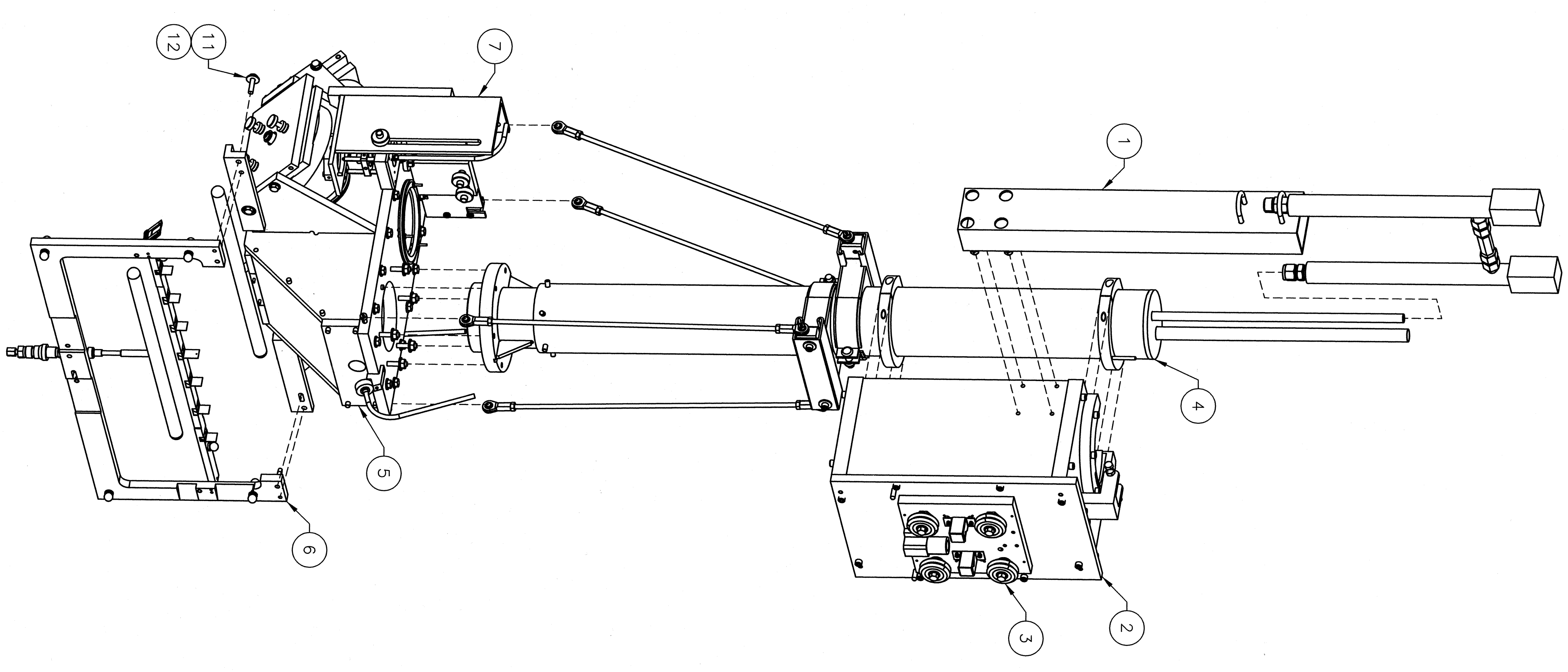


ISO VIEW 1-8C  
 (EPR ASSY IS POSITIONED IN THIS CONFIGURATION FOR TRANSV/AV, TRANSV/VP & AV/VP)



ISO VIEW 1-6C  
 (EPR ASSY IS POSITIONED IN THIS CONFIGURATION FOR D2N/LP, EE'D/LP & EE'D/TP)



EXPLODED VIEW 1-4B

QTY	UNIT	PART NO.	DESCRIPTION	MATERIAL	NOTES
2		A06010-03-04-0300	MASTER-CARR	CERAMIC	
2		A06010-03-04-0500	WASHER 1/4 RGLR	CERAMIC	
11		A06010-03-04-1200	HEX HEAD SCREW 1/4-20 UNC X 1.00 LG	CERAMIC	
-					
-					
-					
-					
-					
1		A06010-03-04-0300	EPR ASSEMBLY		
1		A06010-03-04-0500	TARGET LADDER ASSY		
1		A06010-03-04-1200	CS85 OVEN ASSEMBLY		
1		A06010-03-04-0500	TGT SUPPORT TUBE ASSY		
1		A06010-03-04-0800	RAIL CART ASSY		
1		A02013-03-04-0200	ROTATING BEARING SUBASSY		
1		A06010-03-04-1900	HEATER ASSEMBLY		

DOCUMENT CONTROL STAMP

FINISH TO OTHERS  
 MACHINING & BREAK ALL SHARP EDGES  
 DO NOT SCALE DRAWING

AS NOTED

THIRD ANGLE PROJECTION

DATE: 04 DEC 08  
 DRAWN: S EP  
 APPROVED: [Signature]  
 CHECKED: [Signature]

JEFFERSON LAB  
 Department of Energy  
 Hall A  
 TRANSVERSITY - EXP E06-010  
 TARGET SYSTEM  
 TARGET LADDER / OVEN  
 A06010-03-04-0000  
 SIZE: 1:4  
 SHEET 1 OF 1