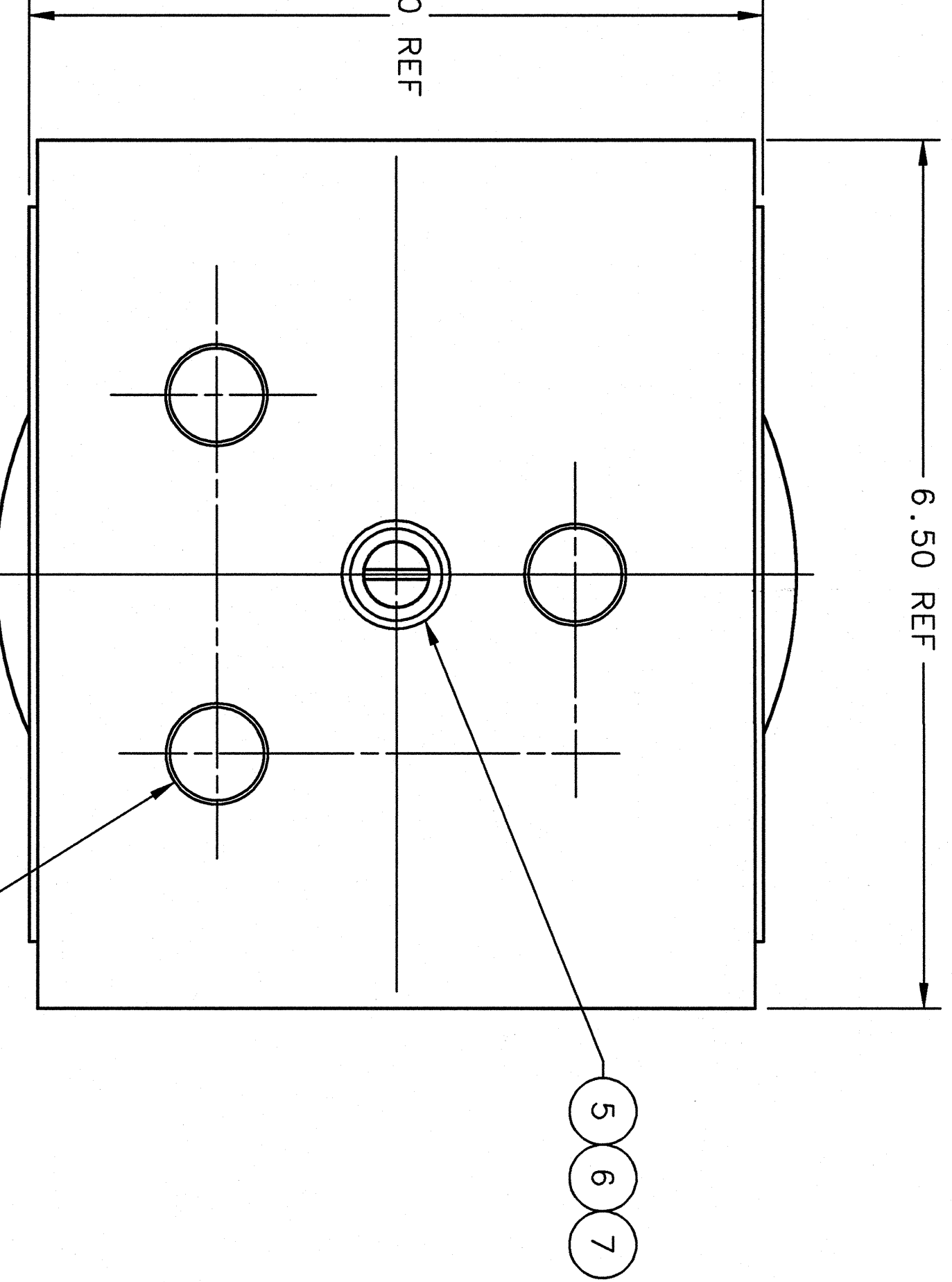
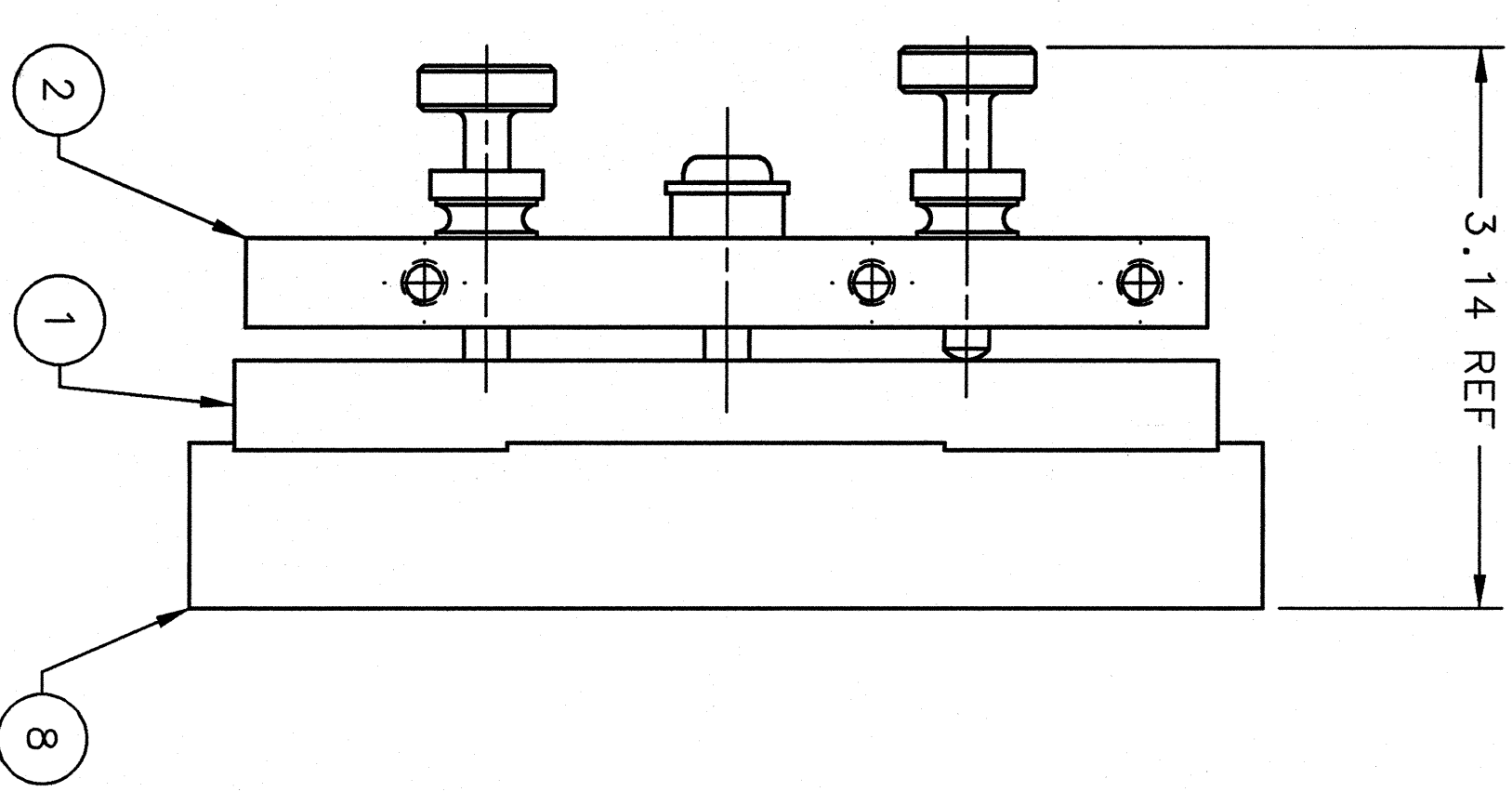


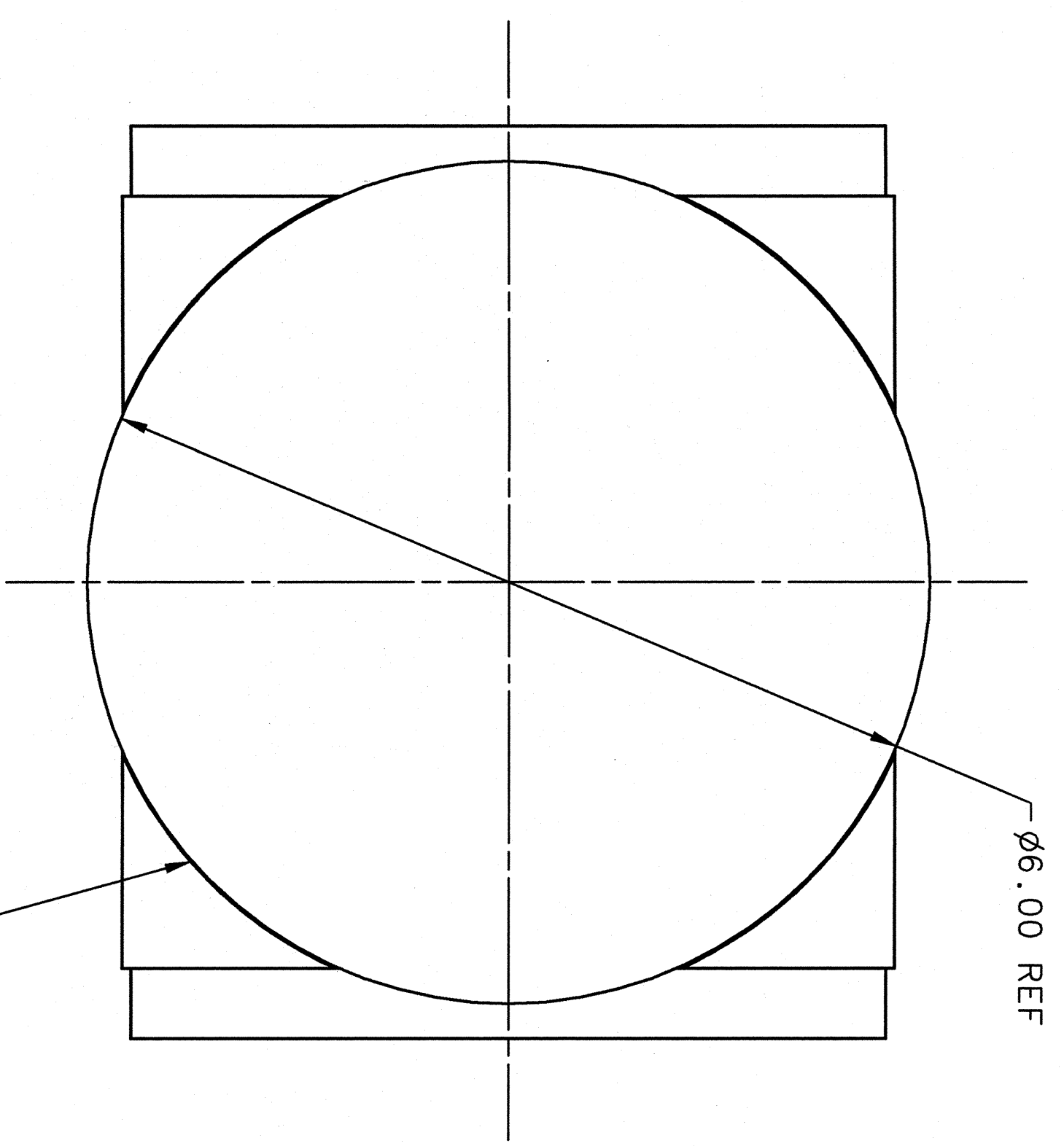
REVISION HISTORY				
ZONE	REV	DESCRIPTION	DATE	APPROVED
1-3B	A	REVISED ITEM 5 PART NO.: REID TOOL	11 JUL 05	MILLER
		WAS RAPID TOOL SUPPLY VLER	11 JUL 05	ARG
1-3A	B	ADDED ONE TAPPED HOLE (EACH END) OF ITEM 2 - MIRROR ADJ PLATE	05 SEP 06	ESP
			12/20/06	ARG



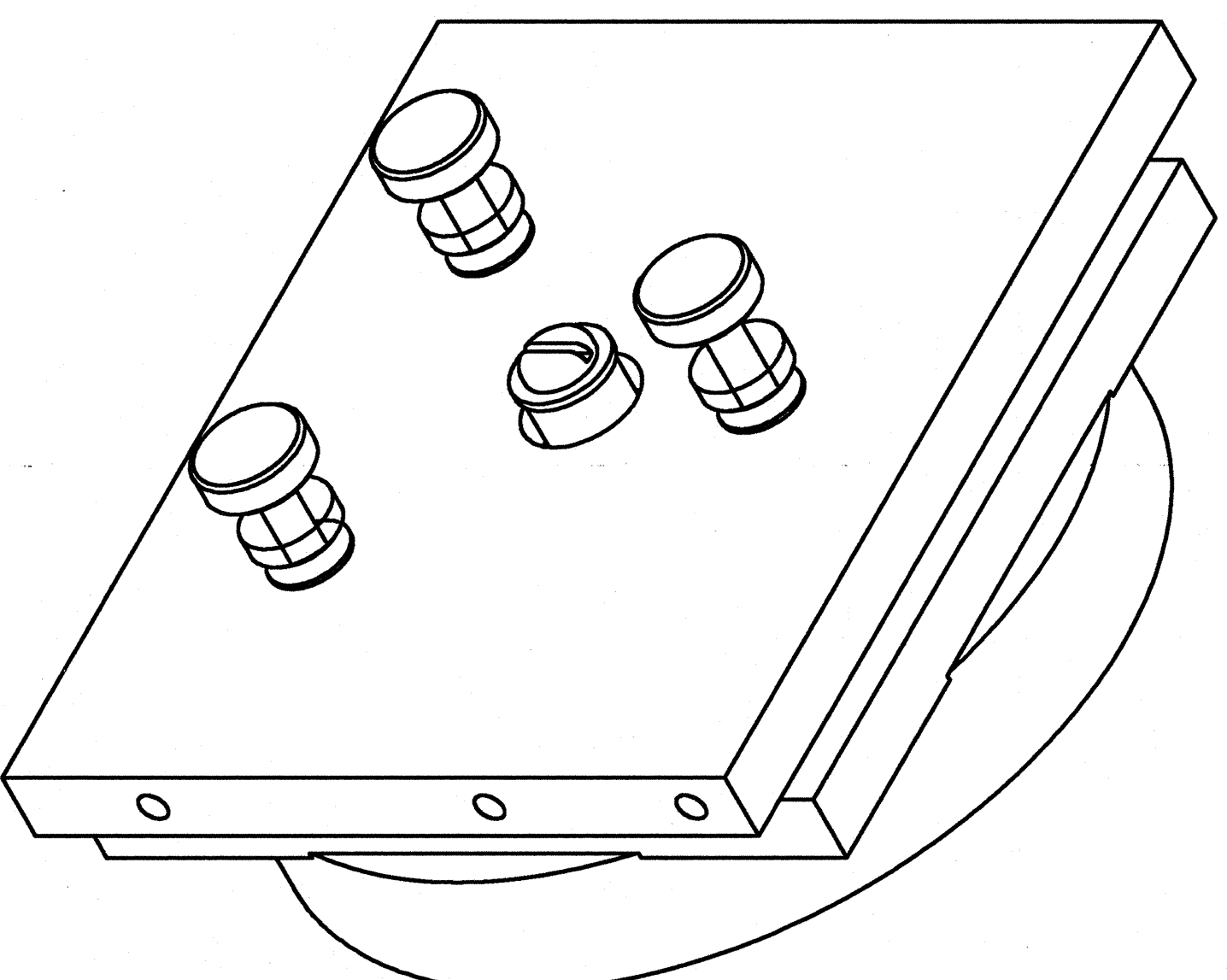
FRONT VIEW 1-7A



RT SIDE VIEW 1-5C



BACK VIEW 1-3C



ISO VIEW 1-7A

NOTE:
1. EPOXY MIRROR (ITEM 8) TO MIRROR MTG PLATE GEN (ITEM 1) AT ASSEMBLY.

QTY	ITEM NO.	PART OR IDENTIFYING NO.	DESCRIPTION OR IDENTIFYING NO.	MATERIAL SPECIFICATION	NOTES
1	8	NEWPORT 60D20	LASER MIRROR 6 IN OD .925 THK	PYREX	1
1	7	-	WASHER 1/4 X .06	316 STAINLESS STEEL	-
1	6	-	SCREW SLOTTED PAN HD 1/4-20 X 1.375 IN LG	316 STAINLESS STEEL	-
1	5	REID TOOL SUPPLY #RES-3501	ELASTOMER SPRING .630 X 5/8 IN LG	NEOPRENE	-
3	4	McMASTER-CARR 92/41A160	KNURLED THUMB NUT 1/4-20	BRASS	-
3	3	A02013-03-05-0503	THUMB SCREW	BRASS	-
1	2	A02013-03-05-0502	MIRROR ADJ PLATE GEN	TORLON	-
1	1	A02013-03-05-0501	MIRROR MTG PLATE GEN	TORLON	1

DOCUMENT CONTROL STAMP		TRACKING NO. N/A		DATE		APPROVALS	
				29 APR 06		DRAWN: J. MILLER CHECKED: A. GAWALYA APPROVED: W. SIKHAKWIKI APPROVED: P. BRINDA	
FINISH MACHINED SURFACES UNLESS OTHERWISE NOTED BREAK & BREAK ALL SHARP EDGES DO NOT SCALE DRAWING		DIM & TOL PER ASME Y14.5 UNLESS OTHERWISE SPECIFIED DIMENSIONS ARE IN INCHES TOLERANCES ARE: FRACTIONS DECIMAL ANGLES ±.01 ±.005 ±.01 ±.005 ±.01 ±.005		THIRD ANGLE PROJECTION		HALL A - GEN TARGET - TARGET SYSTEM TARGET SUBASSY GEN MIRROR ASSY GEN	
		Thomas Jefferson National Accelerator Facility UNITED STATES DEPARTMENT OF ENERGY		SIZE DIM: NO. A02013-03-05-0500 SCALE: 1:1		REV. B SHEET 1 OF 1	