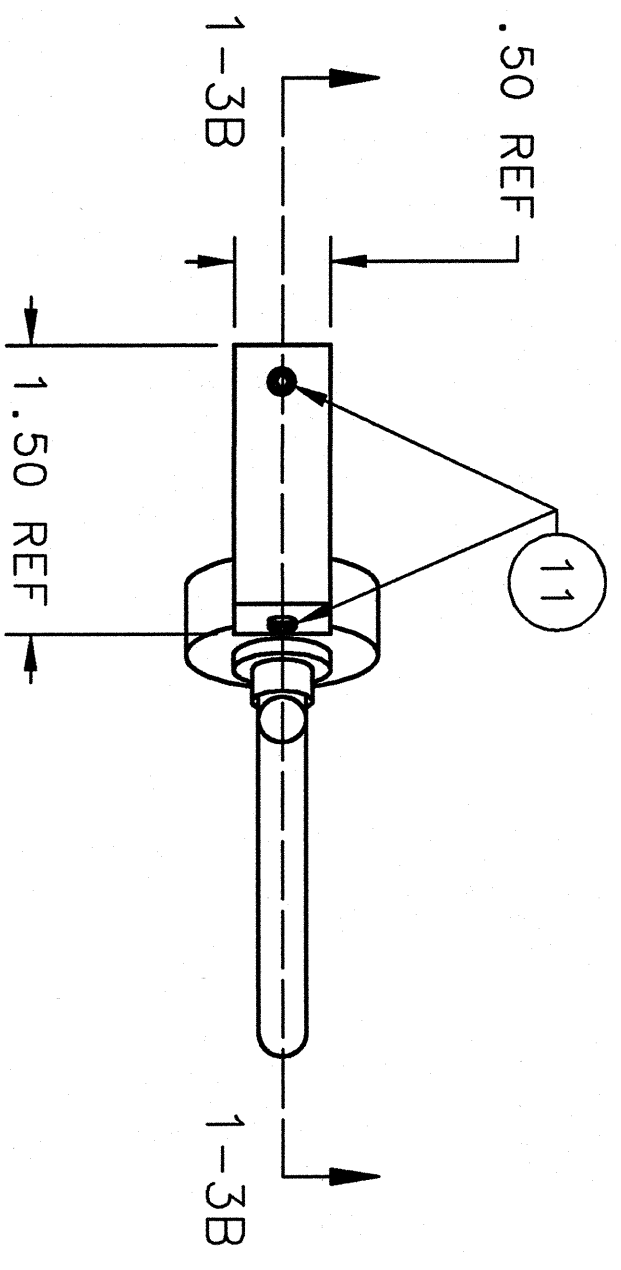
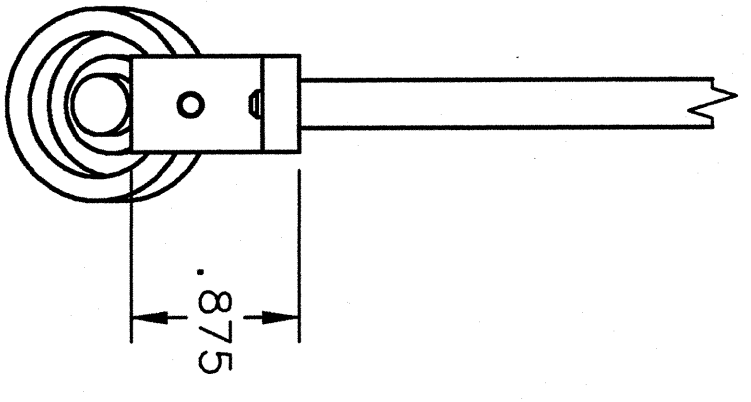


ZONE	REV	DESCRIPTION	DATE	APPROVED
ALL	A	CHANGED McMASTER-CARR PART NO. 846K11 TO NO. 8446K11 ON ITEMS 5 & 6.	25 APR 07	SME

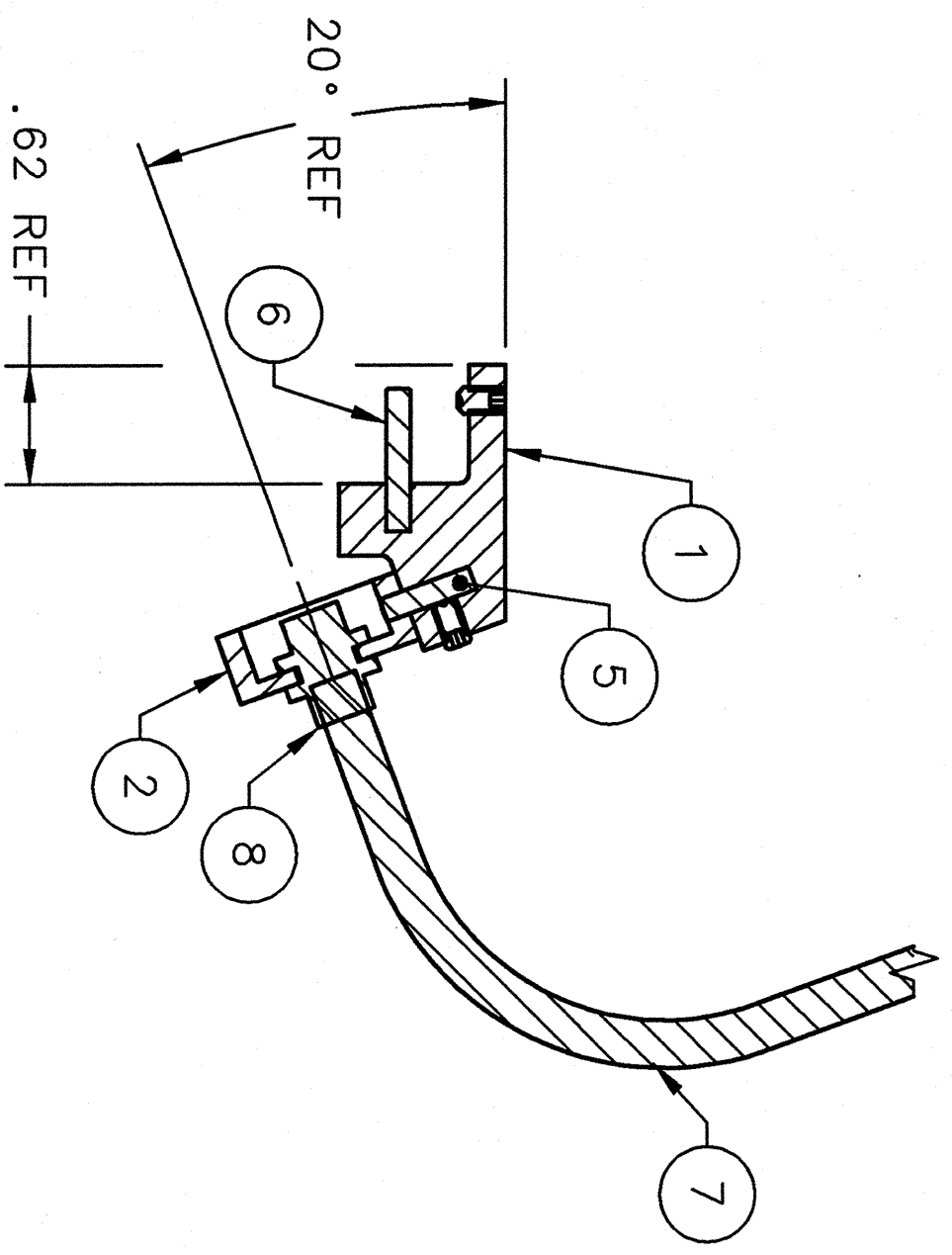
REVISION HISTORY



TOP VIEW 1-3C



FRONT VIEW 1-4B



SECTION VIEW 1-3B  
(1-3C)

QTY	ITEM NO.	PART OR IDENTIFYING NO.	DESCRIPTION OR IDENTIFYING NO.	MATERIAL SPECIFICATION	NOTES
2	11	McMASTER-CARR 92991A144	SET SCREW STD SKT-CUP PT #6-32 UNC x 1/4 LG	BRASS	-
-	10	-	-	-	-
-	9	-	-	-	-
1	8	THORLABS JLAB PROVIDED	SMA TO SMA CONNECTOR	-	-
1	7	SPECTRAL JLAB PROVIDED	OPTIC FIBER	-	-
1	6	McMASTER-CARR 8446K11	DOWEL 1/8 DIA x 3/4 LG	VERY HIGH TEMP H-ALUMINA CERAMIC	3
1	5	McMASTER-CARR 8446K11	DOWEL 1/8 DIA x 1/2 LG	VERY HIGH TEMP H-ALUMINA CERAMIC	2
-	4	-	-	-	-
-	3	-	-	-	-
1	2	A06010-03-04-0602	FIBER CONN MOUNT	6061-T6 ALUMINUM	-
1	1	A06010-03-04-0601	ANALYZER MOUNT	MACOR	-

NOTES:

1. ALL DOWELS TO BE REAMED IN ASSY.
2. PRESS FIT DOWEL (ITEM 5) INTO FIBER CONN MOUNT (ITEM 2).
3. GLUE DOWEL (ITEM 6) INTO ANALYZER MOUNT (ITEM 1) WITH PERMATEX SILICON HI-TEMP FORM-A-GASKET RED.
4. DOWELS HAVE A STOCK TOL OF  $\pm 0.001$ . CUT 0.01 CHAMFER ON BOTH ENDS OF ALL DOWELS.
5. ITEMS NOTED WILL BE PROVIDED BY JLAB.

DOCUMENT CONTROL STAMP

MATERIAL AS NOTED

FINISH MACHINED SURFACES DEBURR & BREAK ALL SHARP EDGES

UNLESS OTHERWISE NOTED

DO NOT SCALE DRAWING

DIM & TOL PER ASME Y14.5 UNLESS OTHERWISE SPECIFIED DIMENSIONS ARE IN INCHES FRACTIONS DECIMAL ANGLES

THIRD ANGLE PROJECTION

TRACKING NO. N/A

APPROVALS

DATE

CHECKED ALAN R. CHVALYA 13 SEP 06

APPROVED JIANGPING CHEN 13 SEP 06

APPROVED PAUL BRINDZA 13 SEP 06

HALL A - TRANSVERSITY - EXP E06-010 TARGET SYSTEM OVEN ASSEMBLY SPECTRUM ANALYZER MIN

Thomas Jefferson National Accelerator Facility UNITED STATES DEPARTMENT OF ENERGY

Jefferson Lab

SIZE DWG. NO. A06010-03-04-0600

SCALE 1:1

SHEET 1 OF 1