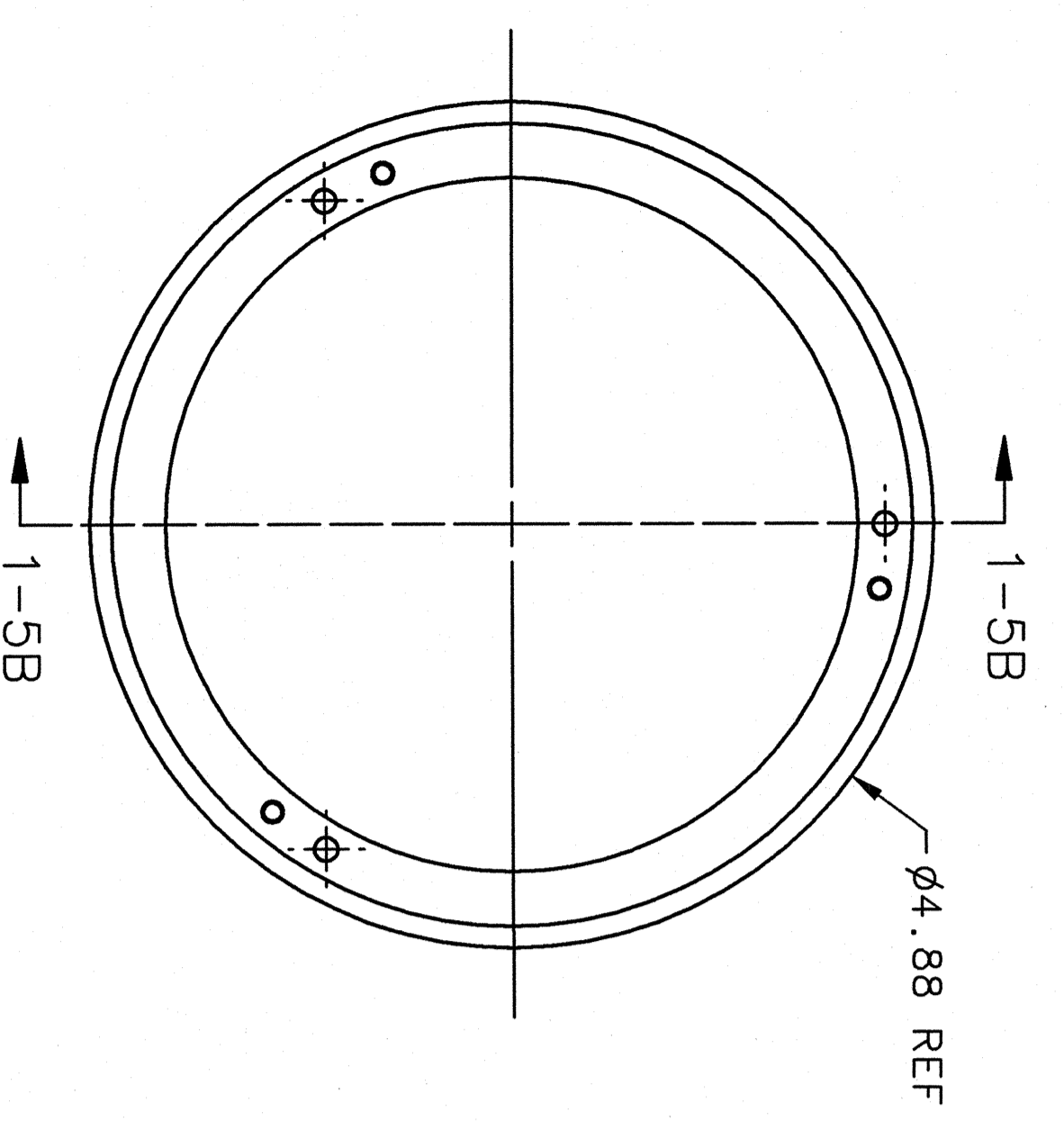
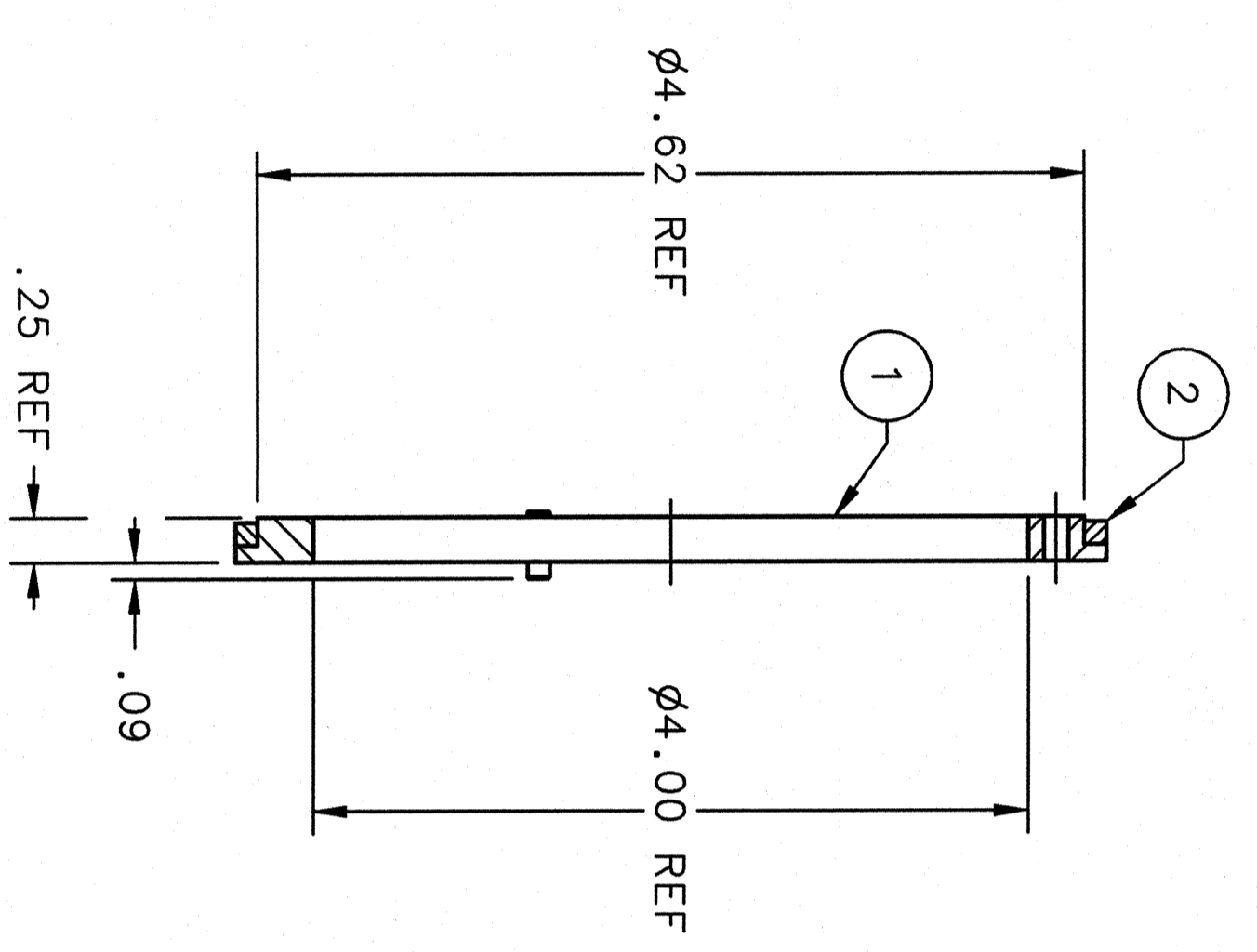


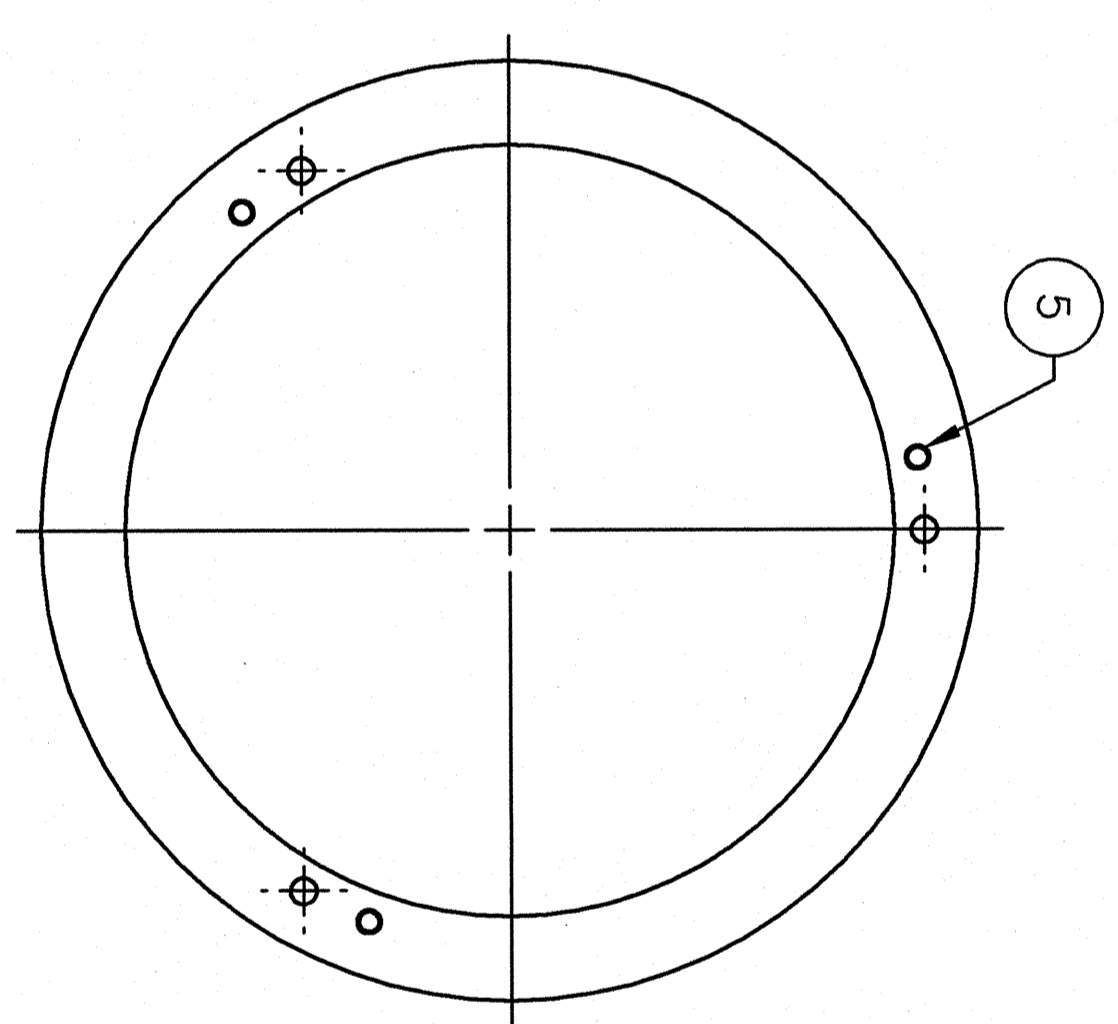
| ZONE | REV | DESCRIPTION  | DATE                   | APPROVED    |
|------|-----|--|------------------------|-------------|
| ALL  | A   | MODIFIED MOUNT (ITEM 1) 4.88 OD WAS 5.44<br>4.00 ID WAS 4.12, 4.62 DIA WAS 5.00.<br>DWL 1/8 DIA x 3/8 LG (ITEM 5) WAS 1/4 LG.<br>MOD NOTE 3 - CLOSE SLIDING FOR THE 3 DWLS<br>WERE TO BE GLUED INTO THE MOUNT. | 20 SEP 06<br>20 SEP 06 | SMF<br>CARY |



FRONT VIEW 1-7B

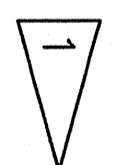


SECTION VIEW 1-5B  
(1-7B)



REAR VIEW 1-4B

| QTY | ITEM | RECD | IDENTIFYING NO.   | PART OR IDENTIFYING NO. | DESCRIPTION                   | MATERIAL SPECIFICATION                        | NOTES |
|-----|------|------|-------------------|-------------------------|-------------------------------|---|-------|
| 1   | 1    |      | A06010-03-04-0701 |                         | MOUNT                         | HIGH TEMP GLASS-MICA                          | -     |
| 1   | 2    |      | A06010-03-04-0702 |                         | PICKUP COIL PUMPING           |   | -     |
| 1   | 3    |      |                   |                         | 4.625 ID x 4.875 OD x 1/8 THK |   | -     |
| 3   | 5    |      |                   | McMASTER CARR 8448R11   | DOWEL 1/8 DIA x 3/8 LG        | VERY HIGH TEMP NONPOROUS HIGH-ALUMINA CERAMIC | 3     |
| -   | 4    |      |                   |                         |                               |   | -     |
| -   | 3    |      |                   |                         |                               |   | -     |



**DOCUMENT CONTROL STAMP**

**TCG**

MATERIAL AS NOTED

FINISHED SURFACES UNLESS NOTED OTHERWISE DEBURR & BREAK ALL SHARP EDGES. DO NOT SCALE DRAWING

125 UNLESS NOTED OTHERWISE

**TRACKING NO. N/A**

APPROVALS: APPROVED: PAUL BRINZA

DATE: 13 SEP 06

SCALE: 1:1

HALL A - TRANSVERSITY - EXP E06-010 TARGET SYSTEM OVEN ASSEMBLY PICKUP COIL PUMPING ASSY

Thomas Jefferson National Accelerator Facility

UNITED STATES DEPARTMENT OF ENERGY

REV. A

**NOTES:**

- ITEM 2 WILL BE PROVIDED BY JLAB.
- ALL DOWELS TO BE REAMED IN ASSY.
- CLOSE SLIDING FIT FOR 3 DOWELS (ITEM 5) INTO MOUNT (ITEM 1) - TO ADJUST & HOLD HEIGHT.
- DOWELS HAVE A STOCK TOL OF ±0.001. CUT 0.01 CHAMFER ON BOTH ENDS OF ALL DOWELS.