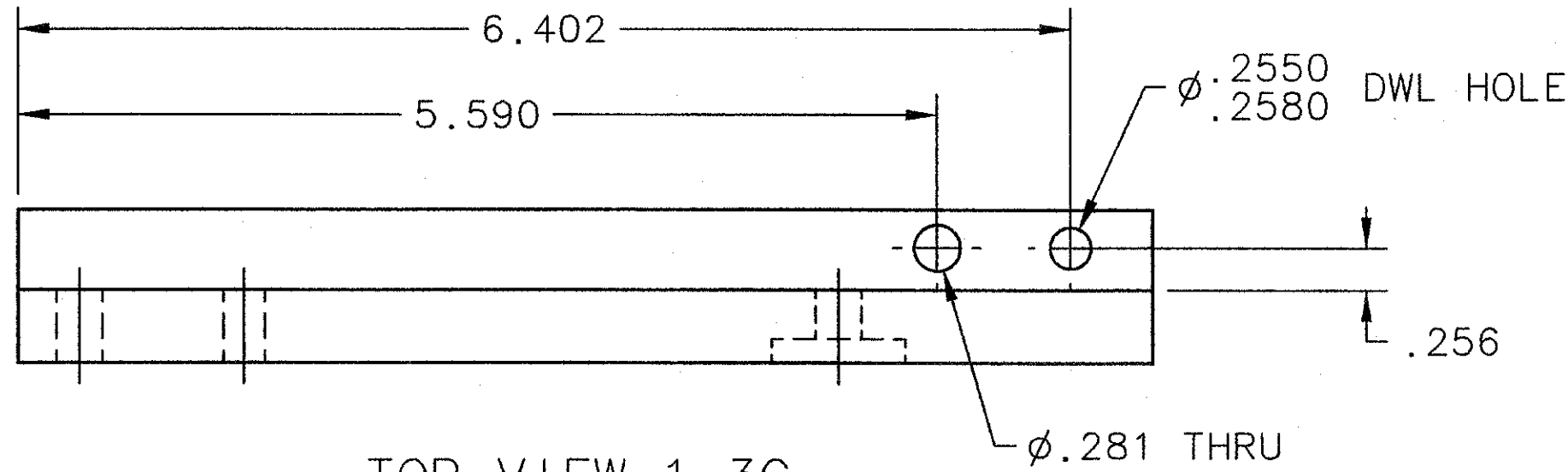
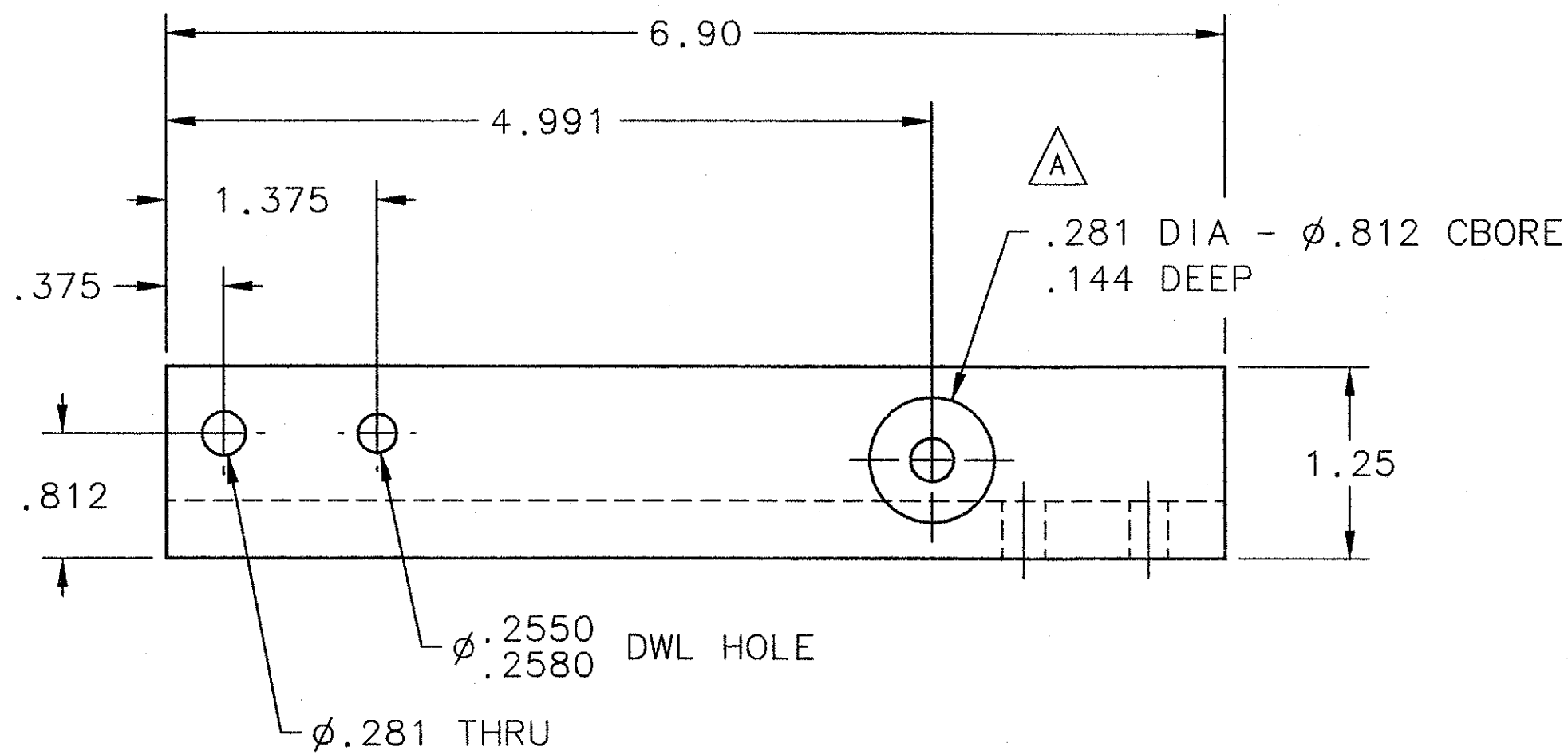


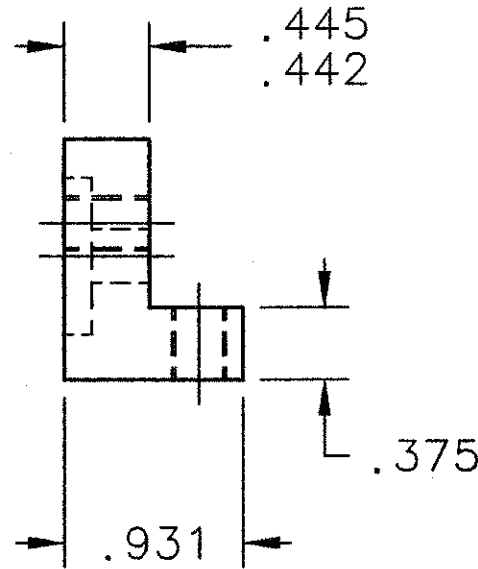
REVISION HISTORY				
ZONE	REV	DESCRIPTION	DATE	APPROVED
ALL	A	FRONT, TOP & R SIDE VIEWS WERE RECREATED DUE TO THE CHANGE IN DESIGN OF THE COUNTERBORED HOLE. THE HOLE WAS .812 DIA x .281 DP TO CLEAR THE HDW HOLDING THE MIRROR ON THE OVEN. THE .281 THRU HOLE W/ THE .812 DIA CBORE ALLOWS THE HDW TO ATTACH THIS MOUNT TO THE OVEN & MIRROR.	08 OCT 08	SME
1-3C			10 OCT 08	ARL



TOP VIEW 1-3C



FRONT VIEW 1-3B



R SIDE VIEW 1-2B

DOCUMENT CONTROL STAMP IOG	DIM & TOL PER ASME Y14.5 UNLESS OTHERWISE SPECIFIED DIMENSIONS ARE IN INCHES TOLERANCES ARE: FRACTIONS DECIMAL ANGLES \pm N/A .X \pm .1 \pm .50° .XX \pm .01 .XXX \pm .005	TRACKING NO. N/A		United States Department of Energy Jefferson Lab Thomas Jefferson National Accelerator Facility Newport News Virginia
		APPROVALS	DATE	
MATERIAL ULTEM	THIRD ANGLE PROJECTION 	DRAWN S. ESP	25 JUN 08	HALL A -TRANSVERSITY- EXP E06-010 TARGET SYSTEM OVEN ASSEMBLY MOUNT FOR LADDER US
FINISH MACHINED SURFACES 125 UNLESS OTHERWISE NOTED DEBURR & BREAK ALL SHARP EDGES		CHECKED ALAN R. GAVALYA	26 JUN 08	
DO NOT SCALE DRAWING		APPROVED ALAN R. GAVALYA	26 JUN 08	
		APPROVED DOUGLAS HIGINBOTHAM	01 JUL 08	SIZE DWG. NO. REV. C A06010-03-04-1216 A
		SCALE 1:1 USED ON ASSY NO. A06010-03-04-1200 SHEET 1 OF 1		