

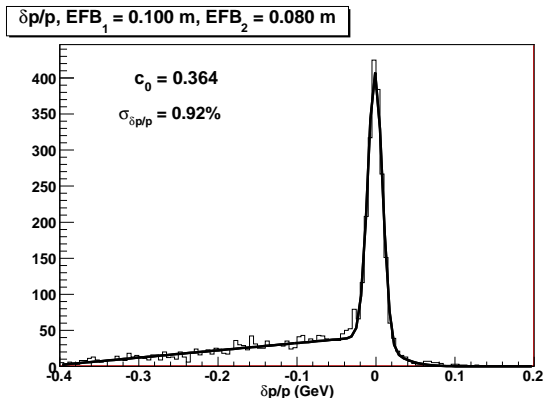
E02-013 Analysis Update

Seamus Riordan

July 29, 2009

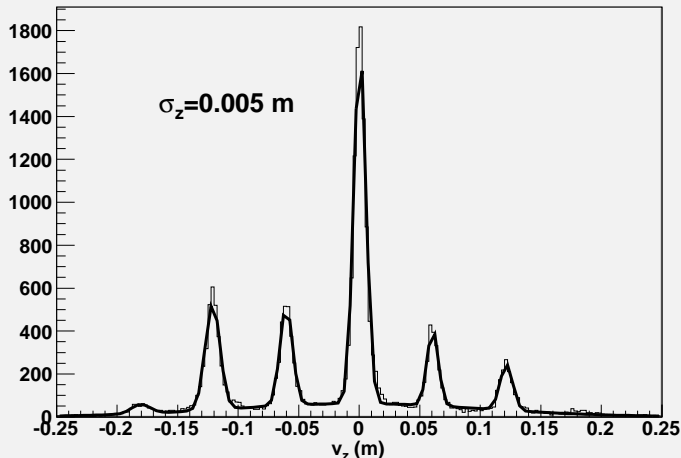
- ▶ Continuing Replays
 - ▶ Kin 2 about 60% done
- ▶ Wrapping up optics
 - ▶ Looked at foils - resolution good with new DB
 - ▶ Optimized EFB positions
 - ▶ Vertex calibration almost done

EFB Optimization - Kin 4



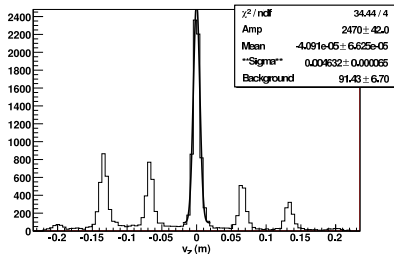
- ▶ Front plane out 10 cm from volume
- ▶ Back plane out 8 cm from volume
- ▶ Need to confirm consistency with other kins

Vertex Reconstruction - Kin 3

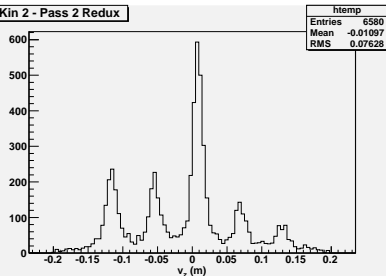


- ▶ Resolution looks good - no improvements from reoptimization
- ▶ Foil spacing is not 6.7 cm (closer to 6 cm)

Vertex Reconstruction - Carbon Foil Target



Kin 2 - Pass 2 Redux



- Spacing is a change from old replays
- Reconstruction with old databases isn't right (requires investigation)

- ▶ (Probably) have optics done by end of the week
- ▶ Will compare to older replays, compare all kinematics
- ▶ Kin 2 redux will probably be finished around then
- ▶ Kin 3 needs about 4-5 days(?) to finish
- ▶ Monte Carlo application to follow

Analysis concerns:

- ▶ Sourcing of post-processing jobs to the farm is not possible
- ▶ Need to set up new machine for analysis