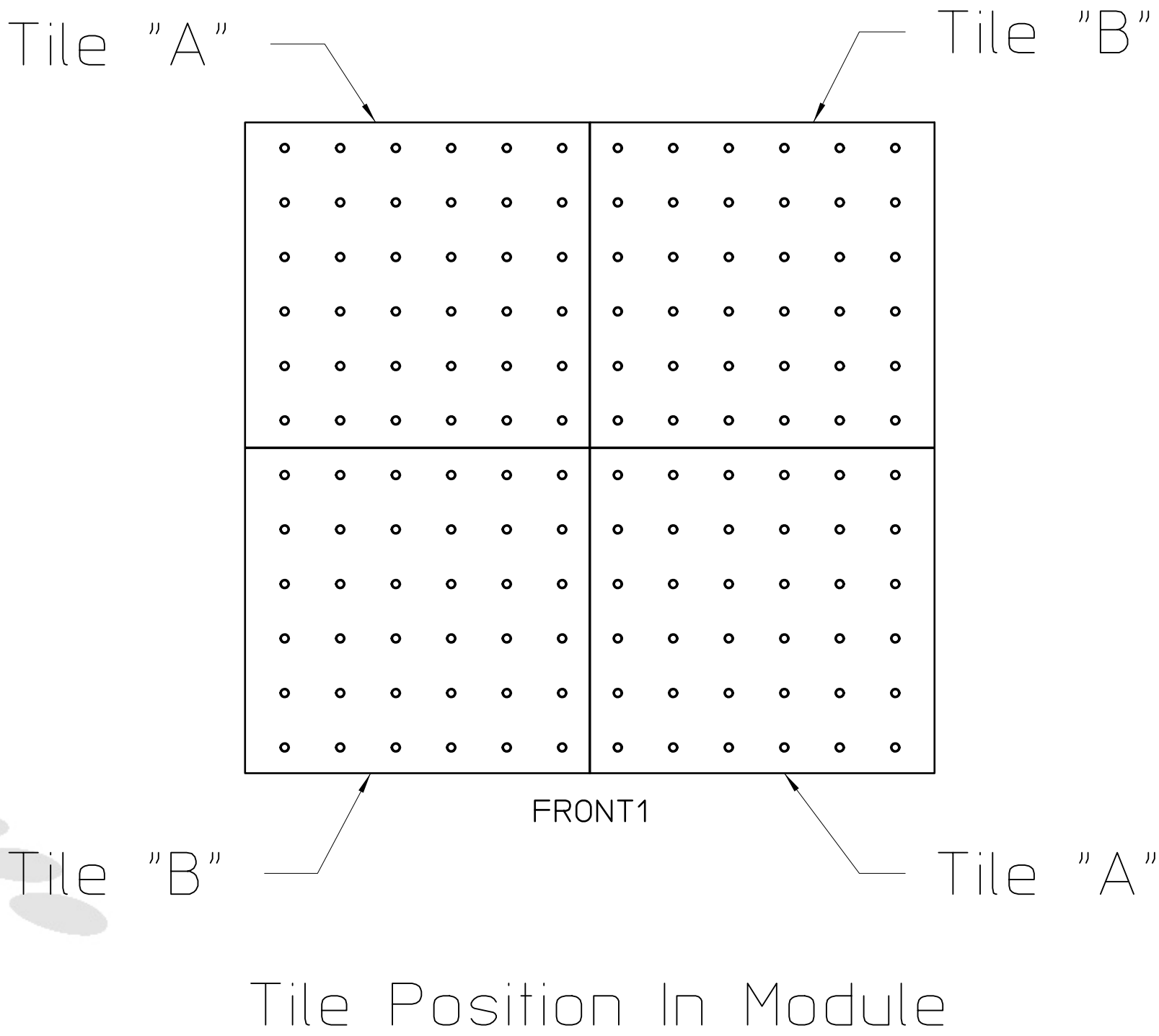
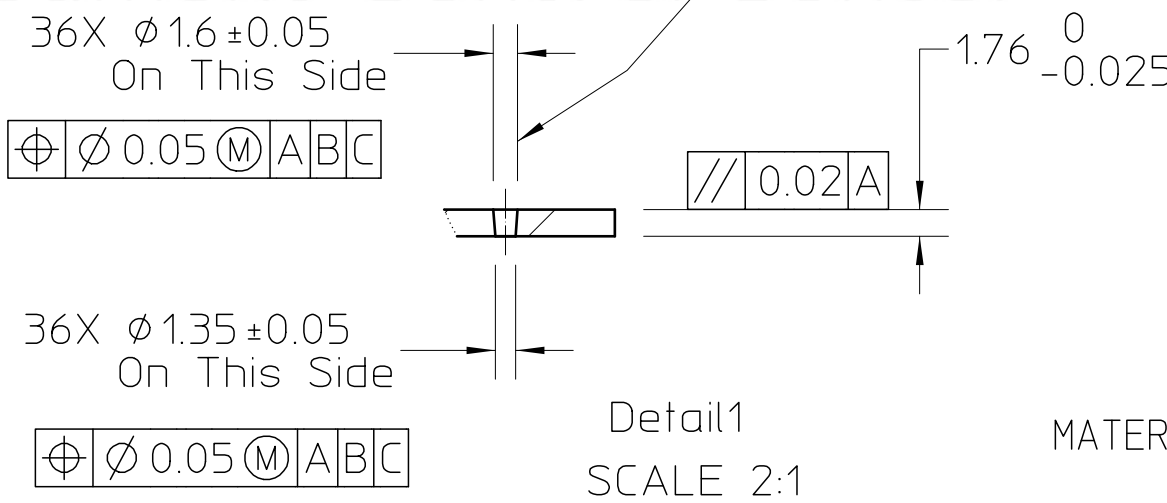
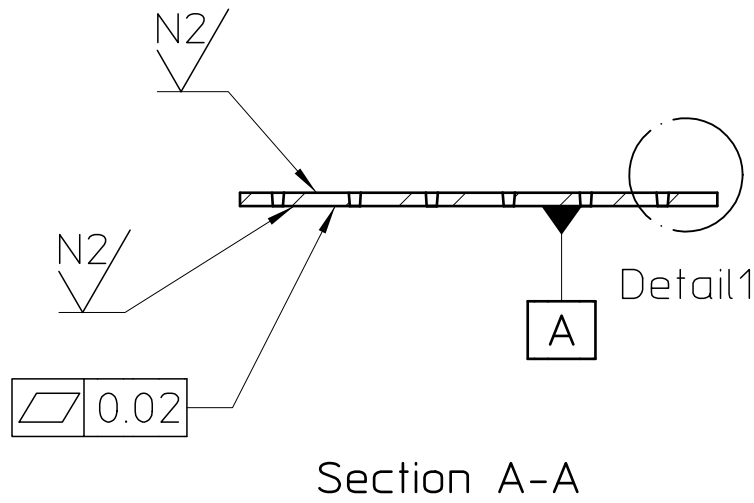
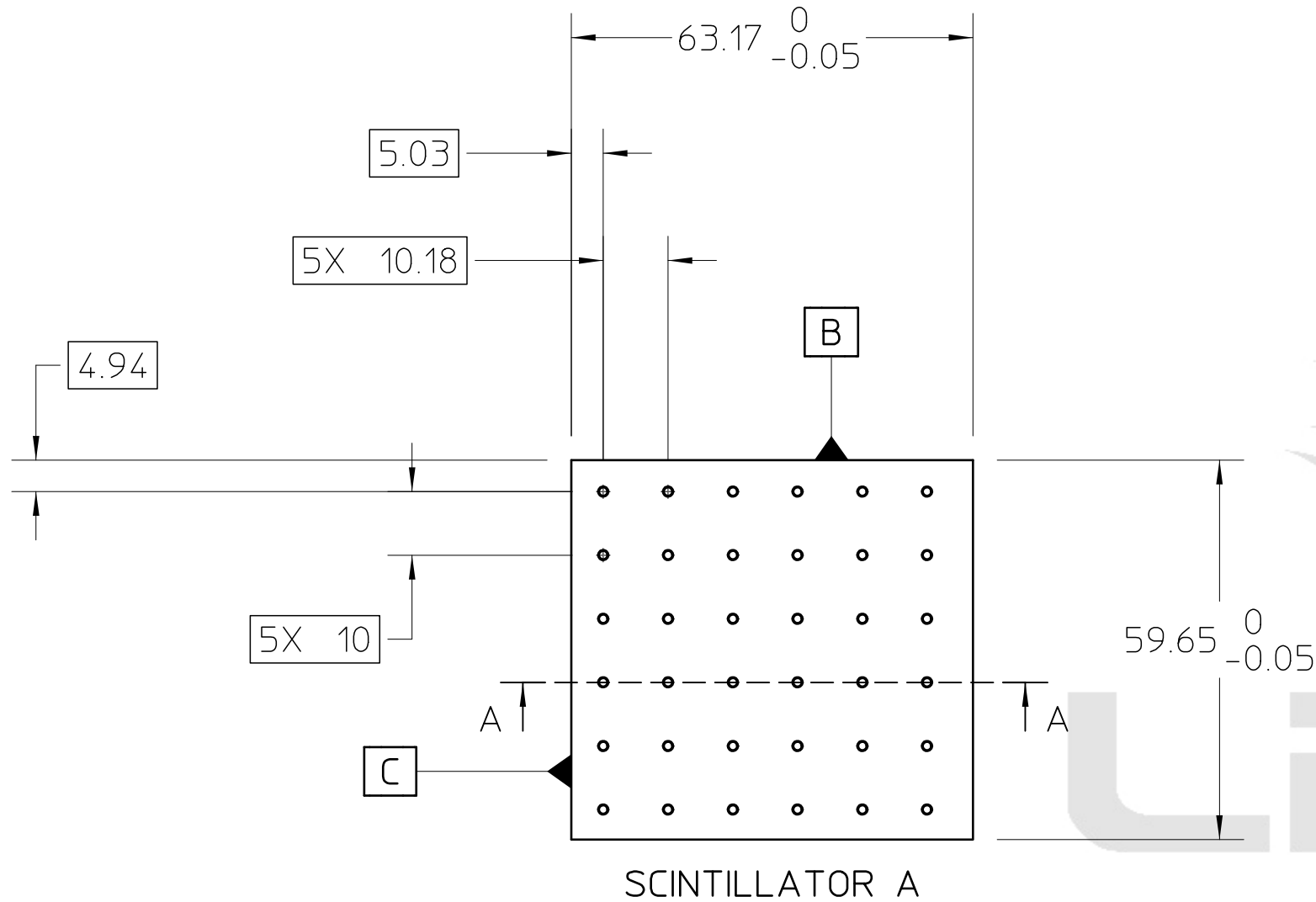


ANSI Notes:

- 1) The envelope principle applies on this drawing. No feature may protrude from the MMC limit, even when form controls are absent.
- 2) UNLESS OTHERWISE SPECIFIED, DIMENSIONS ARE RELATED TO DATUM A (PRIMARY), DATUM B (SECONDARY), AND DATUM C (TERTIARY).
- 3) All dimensions are millimeters.



- Notes:
- 1) See Sheet 2 for Scintillator B.

MATERIAL - POLYSTYRENE 98,46%; PARATERPHENYL 1,5%; POPOP 0,04%

REV	AUTHOR	APPROVER	DATE	CHANGE DESCRIPTION
A	pipersky	pipersky	06-12-07	INITIAL REVISION

UNLESS OTHERWISE SPECIFIED		PROJECT NAME:		ERNEST ORLANDO LAWRENCE	
TOLERANCES:		PROJECT NUMBER:		BERKELEY NATIONAL LABORATORY	
FRACTIONS: $\pm$ - / - -		CATEGORY CODE:		UNIVERSITY OF CALIFORNIA	
ANGLES: $\pm$ - . - ° / MM		DO NOT SCALE PRINT		ALICE - EMCAL	
MACH. SURFS.: 1.6 $\checkmark$ OR BETTER		SCALE: 1:1		DETECTOR MODULE	
REF: ASME Y14.5M-1994, THREADS ARE CLASS 2		THIRD ANGLE PROJECTION		SCINTILLATORS	
BREAK EDGES 0.4 MAX. ON MACHINED WORK		SHEET 1 OF 2		SIZE: C	
REMOVE BURRS, WELD SPLATTER & LOOSE SCALE		DWG NO: 26K205		REV A	

D

Notes:  
1) Scintillator B is a mirror image of Scintillator A.

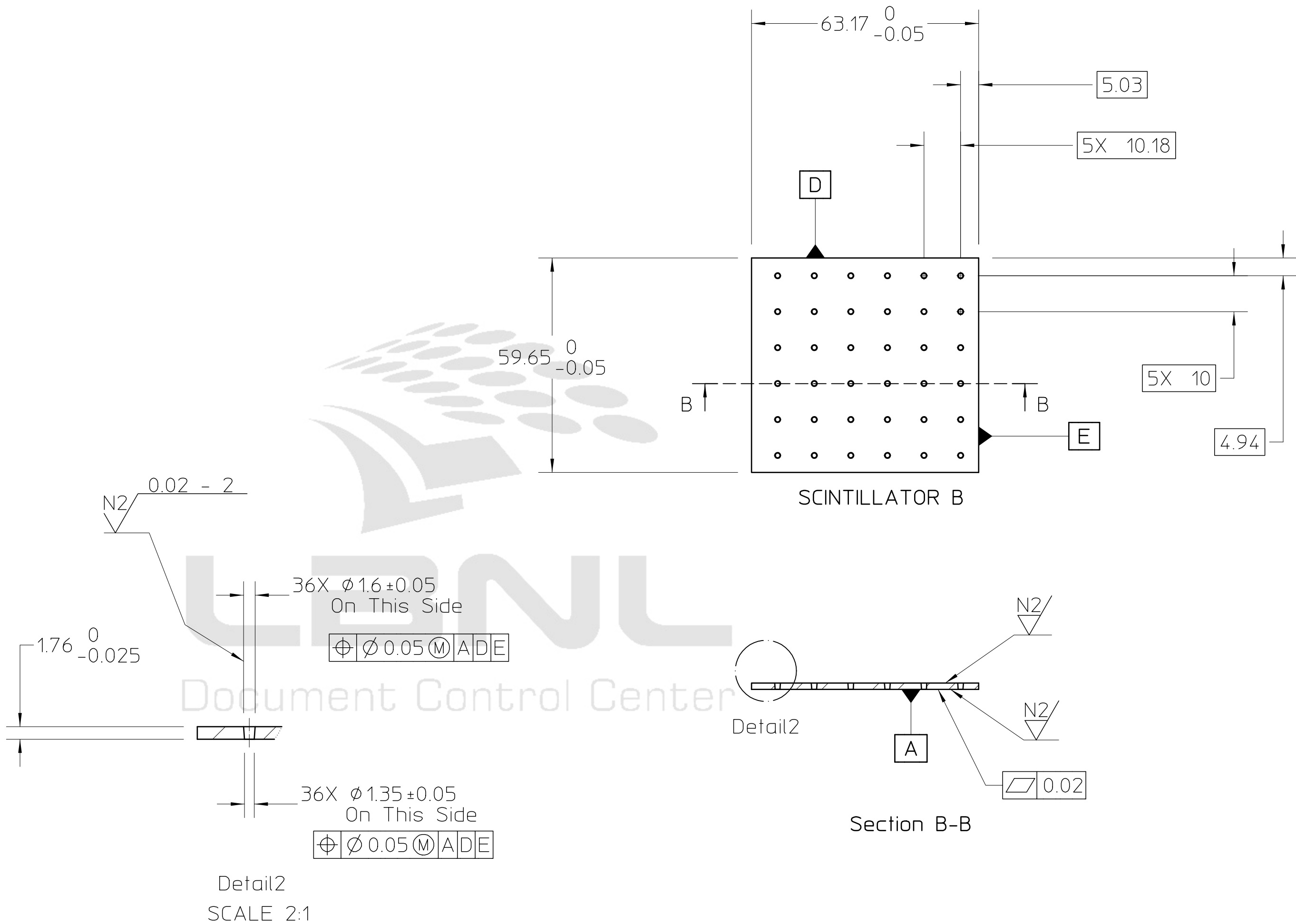
D

C


C

B

B



A

					MAT 2: ,		NOTES:	
					MAT 1: ,		NOTES:	
					PROJECT NAME: PROJECT NUMBER:		ERNEST ORLANDO LAWRENCE BERKELEY NATIONAL LABORATORY UNIVERSITY OF CALIFORNIA 	
				TOLERANCES X± : - . XX± : - - . XXX± : - - - FRACTIONS: ± - / - - ANGLES: ± - . - ° / MM MACH. SURFS. : 1.6 <input checked="" type="checkbox"/> OR BETTER				
					REF: ASME Y14.5M-1994, THREADS ARE CLASS 2 BREAK EDGES 0.4 MAX. ON MACHINED WORK REMOVE BURRS, WELD SPLATTER & LOOSE SCALE		SHEET 2 OF 2 SIZE: C DWG NO: 26K205 REV A	
REV	AUTHOR	APPROVER	DATE	CHANGE DESCRIPTION				
	pipersky	pipersky	06-12-07	INITIAL REVISION				