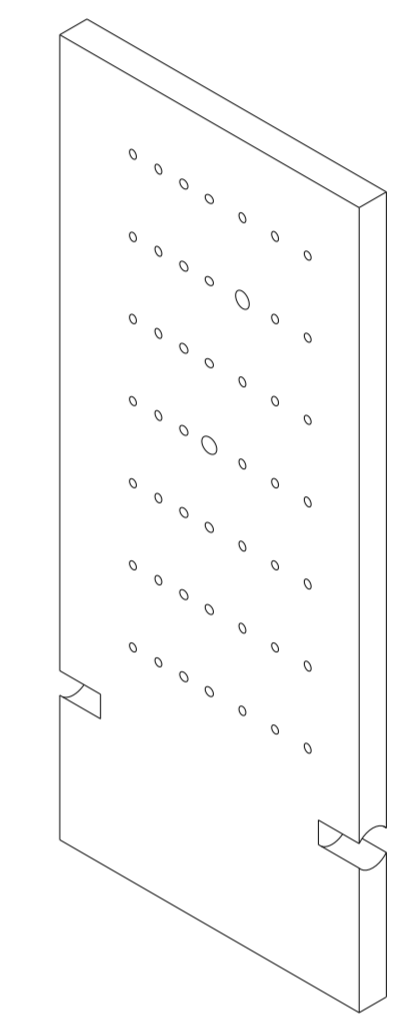
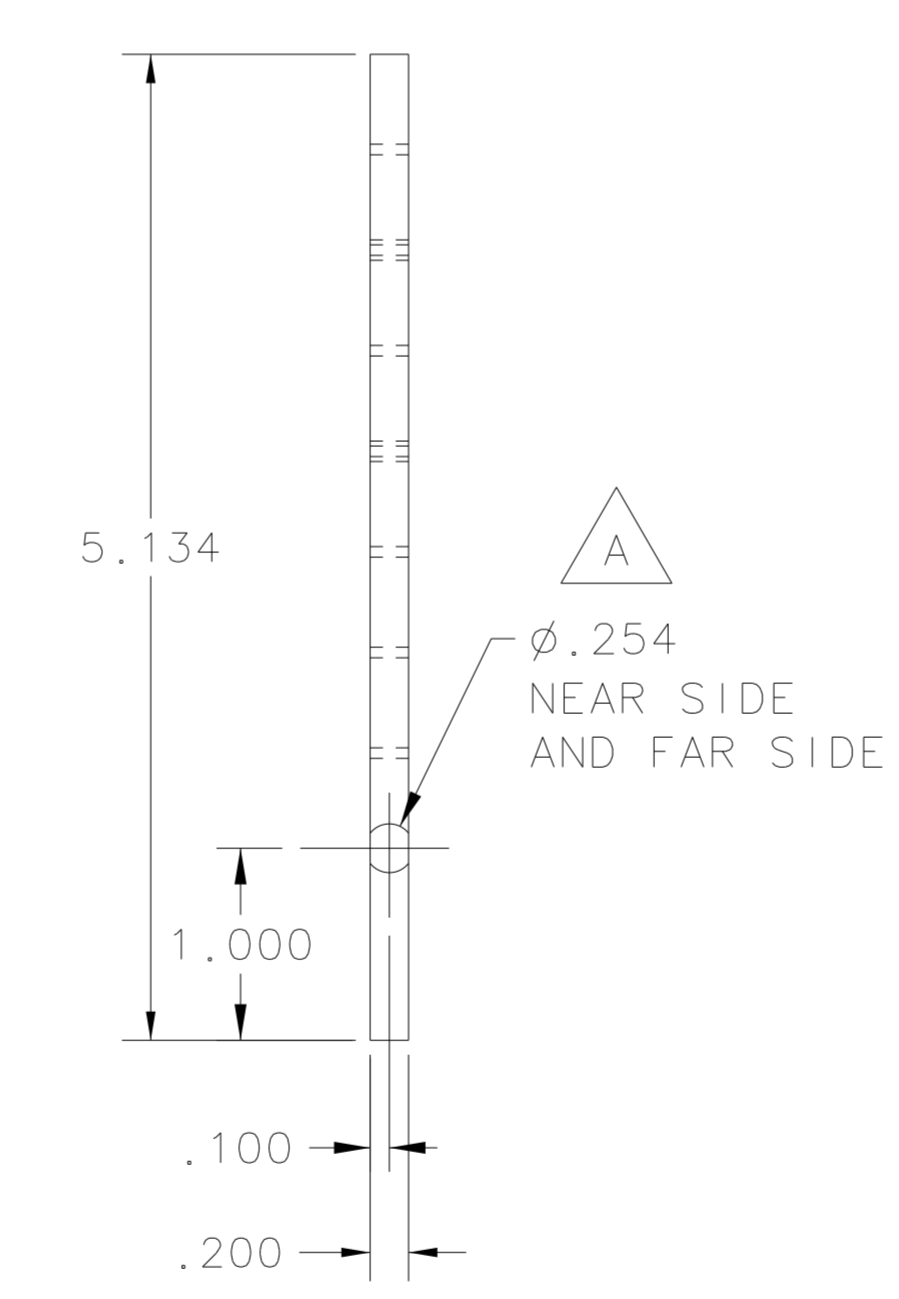
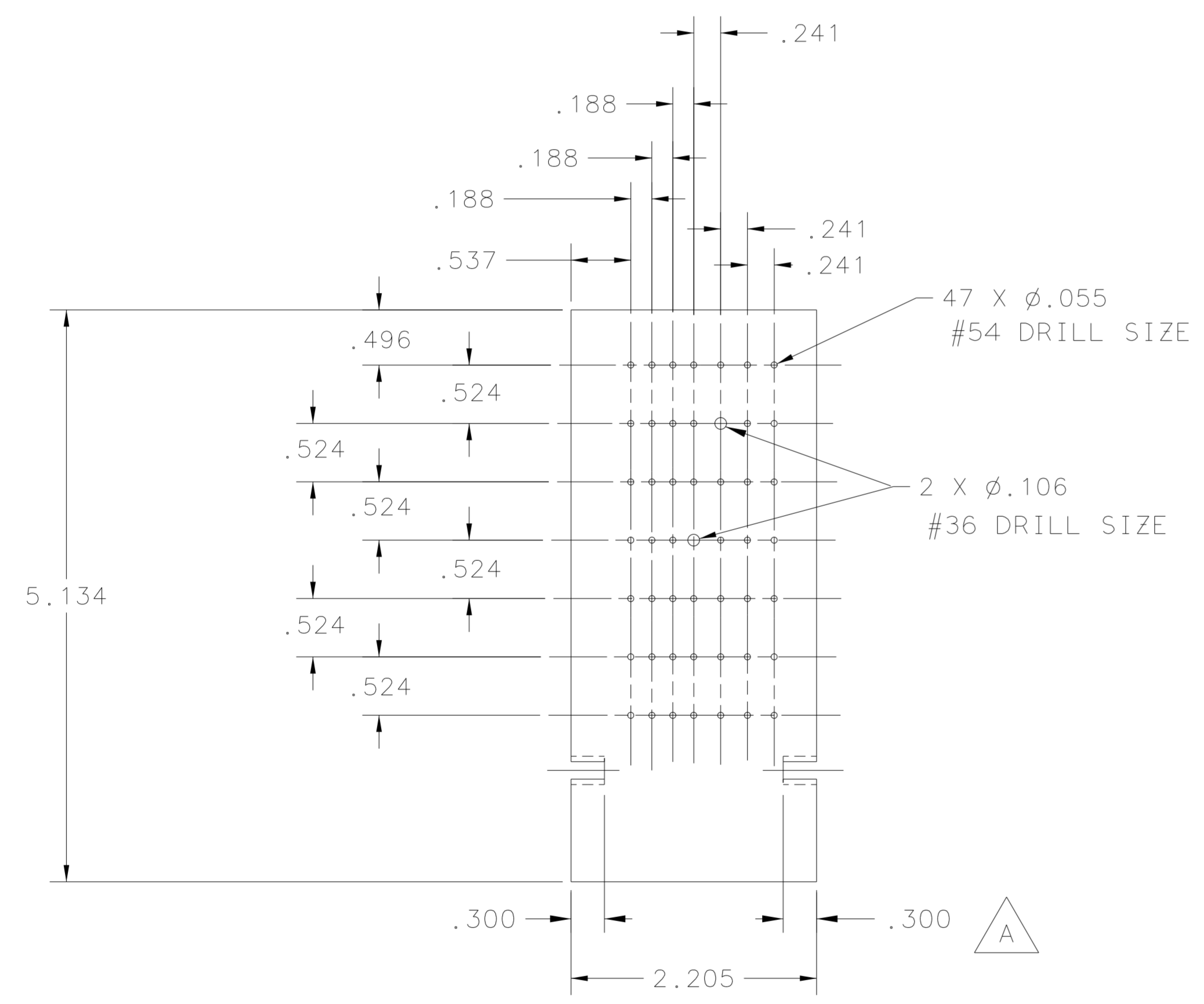
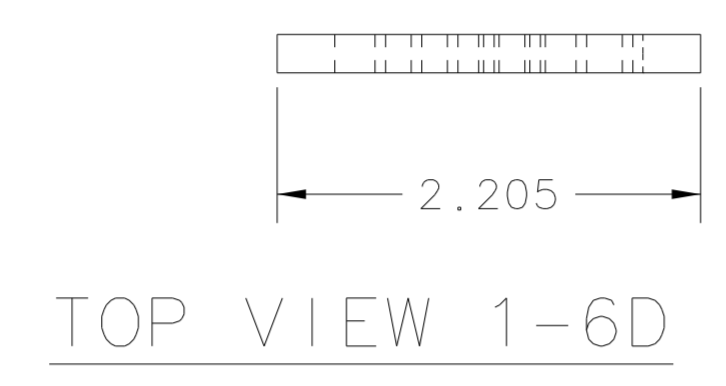


DWG. NO. 65660-D-39005-07		SHT. 1	REV. A	1
REVISION HISTORY				
ZONE	REV	DESCRIPTION	DATE	APPROVED
1-4A	A	ADDED $\phi$ .254 HOLE NEAR SIDE AND FAR SIDE	13NOV02	MILLER
1-6A		FOR DOWEL PINS. ADDED .300 DIMENSION		



NOTES:  
 1. SUGGESTED VENDOR:  
 MI-TECH METALS  
 1-800-624-1895  
<http://www.mi-techmetals.com>

DIM & TOL PER ANSI Y14.5 UNLESS OTHERWISE SPECIFIED DIMENSIONS ARE IN INCHES TOLERANCES ARE: FRACTIONS DECIMAL ANGLES $\pm 1/32$ .XX $\pm$ .015 $\pm$ .50° $\pm$ .XXX $\pm$ .005	CADD I.D. NO.: I-DEAS PROJ: BEAMLINE KAON LBRY: SCATTERING CHAMBER		 Thomas Jefferson National Accelerator Facility NEWPORT NEWS, VIRGINIA UNITED STATES DEPARTMENT OF ENERGY	
	MATERIAL DENSAMET SEE NOTE 1		APPROVALS DRAWN: J. MILLER CHECKED: A. CAVALYA APPROVED: J. LEROSE APPROVED: P. BRINDZA	
FINISH 125 UNLESS OTHERWISE NOTED DEBURR & BREAK ALL SHARP EDGES	DO NOT SCALE DRAWING		HALL A BEAMLINE KAON SCATTERING CHAMBER SIEVE SLIT BR SUBASSY SIEVE SLIT 6°	
DWG. NO. 65660-D-39005-07 SCALE 1:1 USED ON ASSY NO. 65660-D-39005-01		SHEET 1 OF 1		REV. A