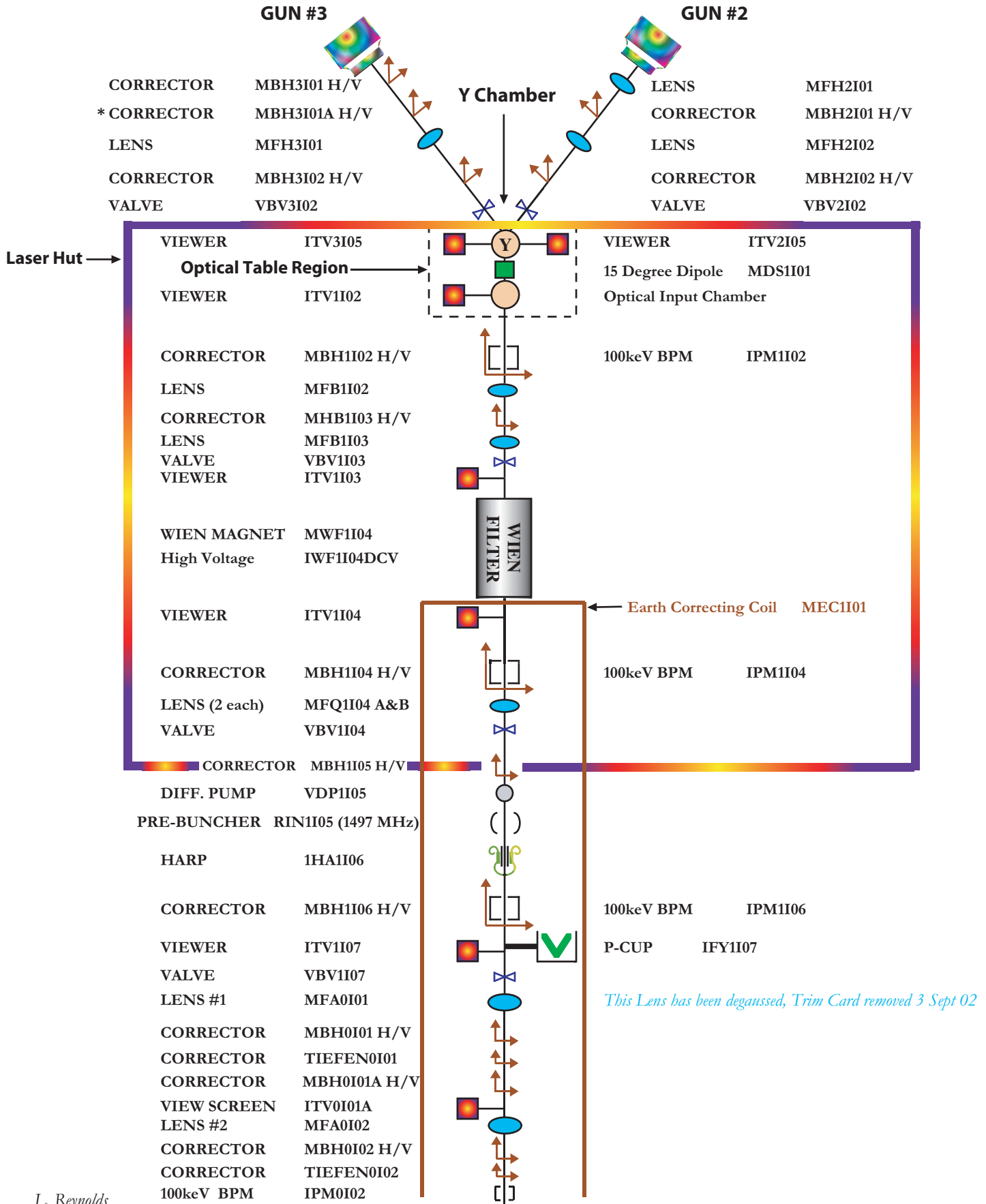
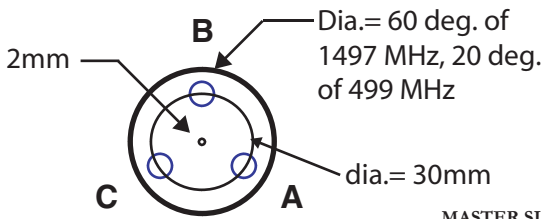


INJECTOR QUICK REFERENCE DRAWING

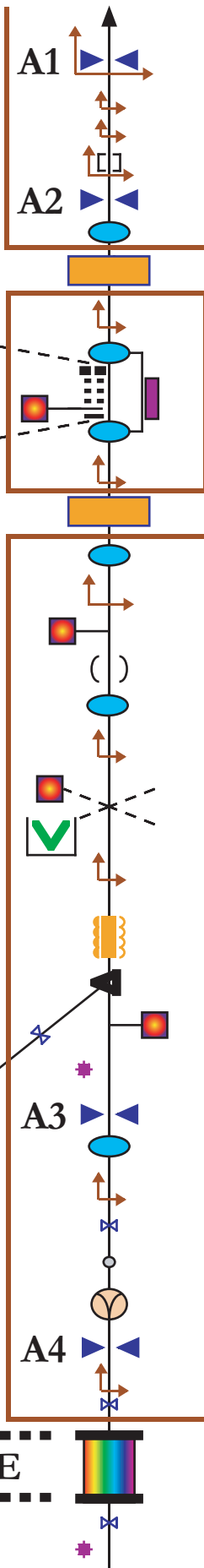


SLIT GEOMETRY



Downstream Electron View

MASTER SLIT
SLIT A
SLIT B
SLIT C
VIEW SCREEN
CENTER PLUG



- APERTURE/CORRECTOR ($\varnothing=4,6,8$ mm) / MHD0101 H/V
- PSS KICKER
- CORRECTOR TIEFEN0102A
- CORRECTOR/BPM MHB0102A H/V / IPM0102A
- APERTURE ($\varnothing=4,6,8$ mm)
- LENS #3 MFA0103
- CHOPPER #1 499 MHz
- Earth Correcting Coil MQW1103
- CORRECTOR MBH0103 H/V
- LENS #4 MFD0104
- Quick Access CARM #1 of 3 MFD0104A } MFD0104A same supply
- VIEW SCREEN ITV0104A
- CORRECTOR MBH0104 H/V
- CHOPPER #2 499 MHz
- Earth Correcting Coil MQW1104
- LENS #5 MFA0105
- CORRECTOR/BPM MBH0105 H/V / IPM0105
- VIEW SCREEN ITV0105
- BUNCHER 1497 MHz
- LENS #6 MFA0106
- CORRECTOR MBH0106 H/V
- VIEW SCREEN ITV0106
- FARADAY CUP #1 (100W) IFY0101
- CORRECTOR MAD0106A H&V
- 1497 MHz
- DIPOLE MBO0106
- VIEW SCREEN ITV0106A
- BLM (on beam line) ILM0107 (station 63)
- APERTURE 6mm
- LENS #7 MFL0107
- CORRECTOR MAD0107 H/V
- BEAMLINE VALVE VBV0107
- DIFFERENTIAL PUMP VDP0107
- YAO CAVITY ICY0107
- APERTURE ~6.5mm
- CORRECTOR MAD0107A H&V
- BEAMLINE VALVE VBV0100A
- BEAMLINE VALVE VBV0100B
- BLM ILM0101 (station 75)

T= 100 keV .55c

CAPTURE

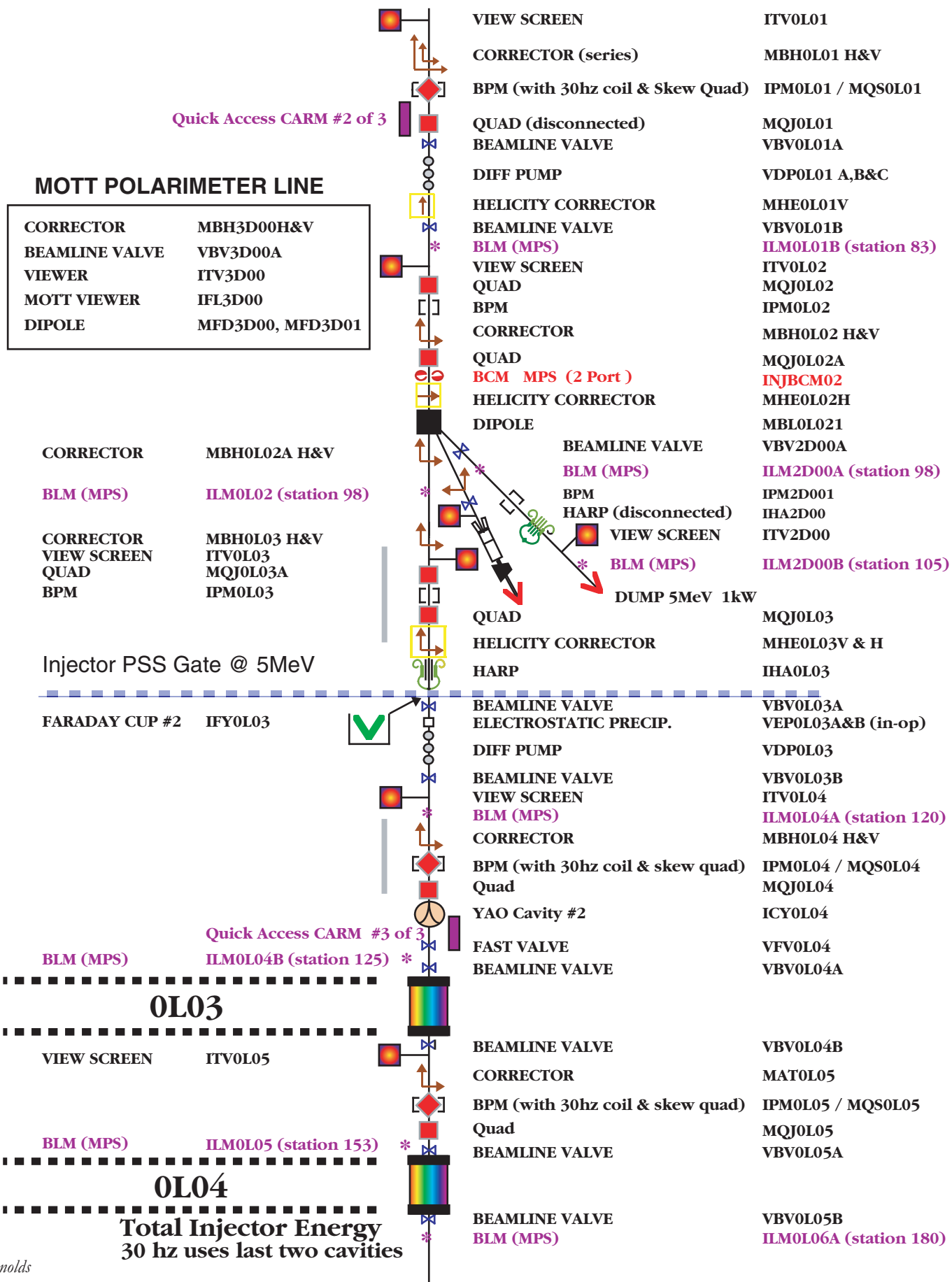
500 keV SPECTROMETER

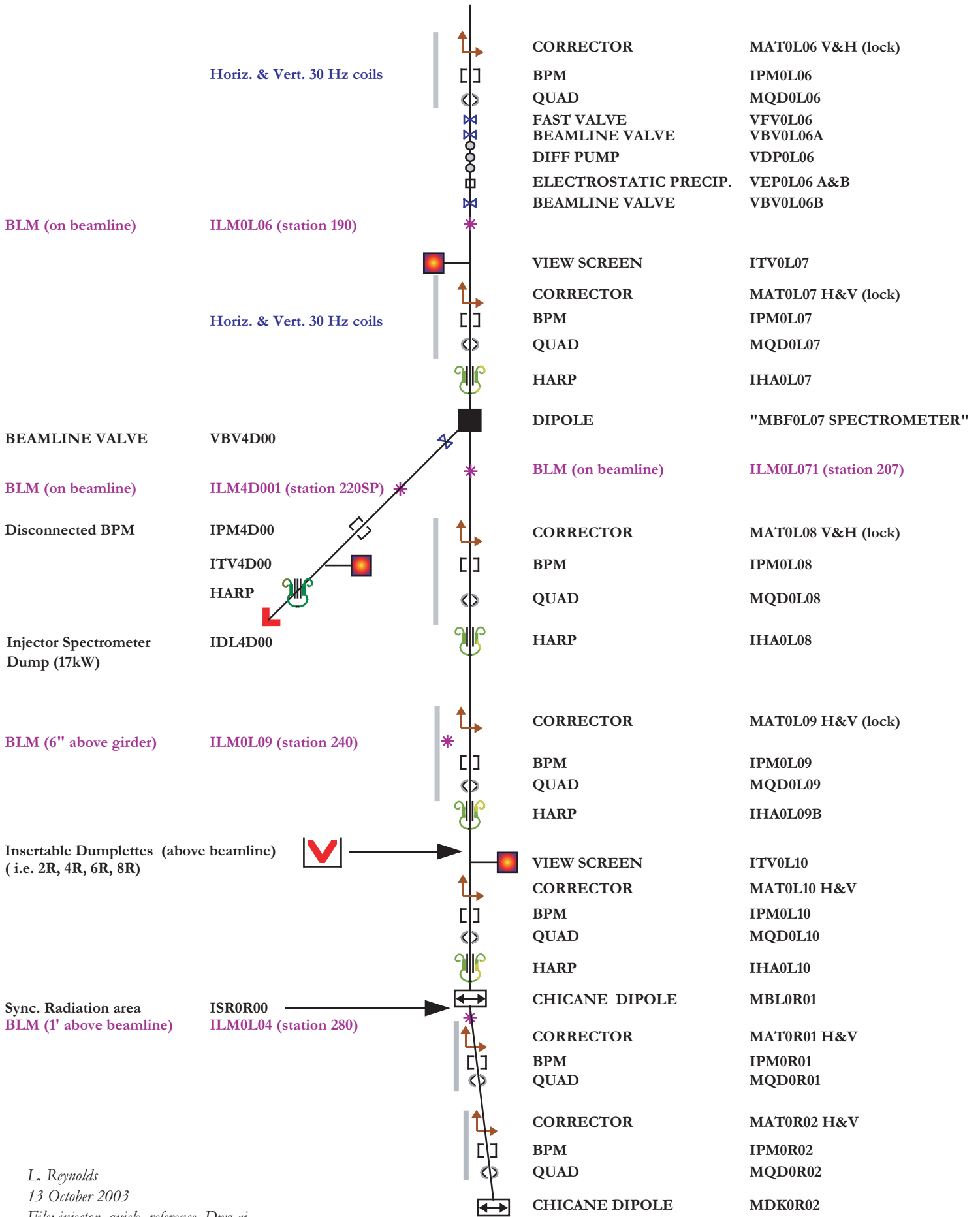
BEAMLINE VALVE VBV1D00
CORRECTOR MAD1D00
VIEW SCREEN ITV1D00
500 keV (1kW) Dump IDL1D00

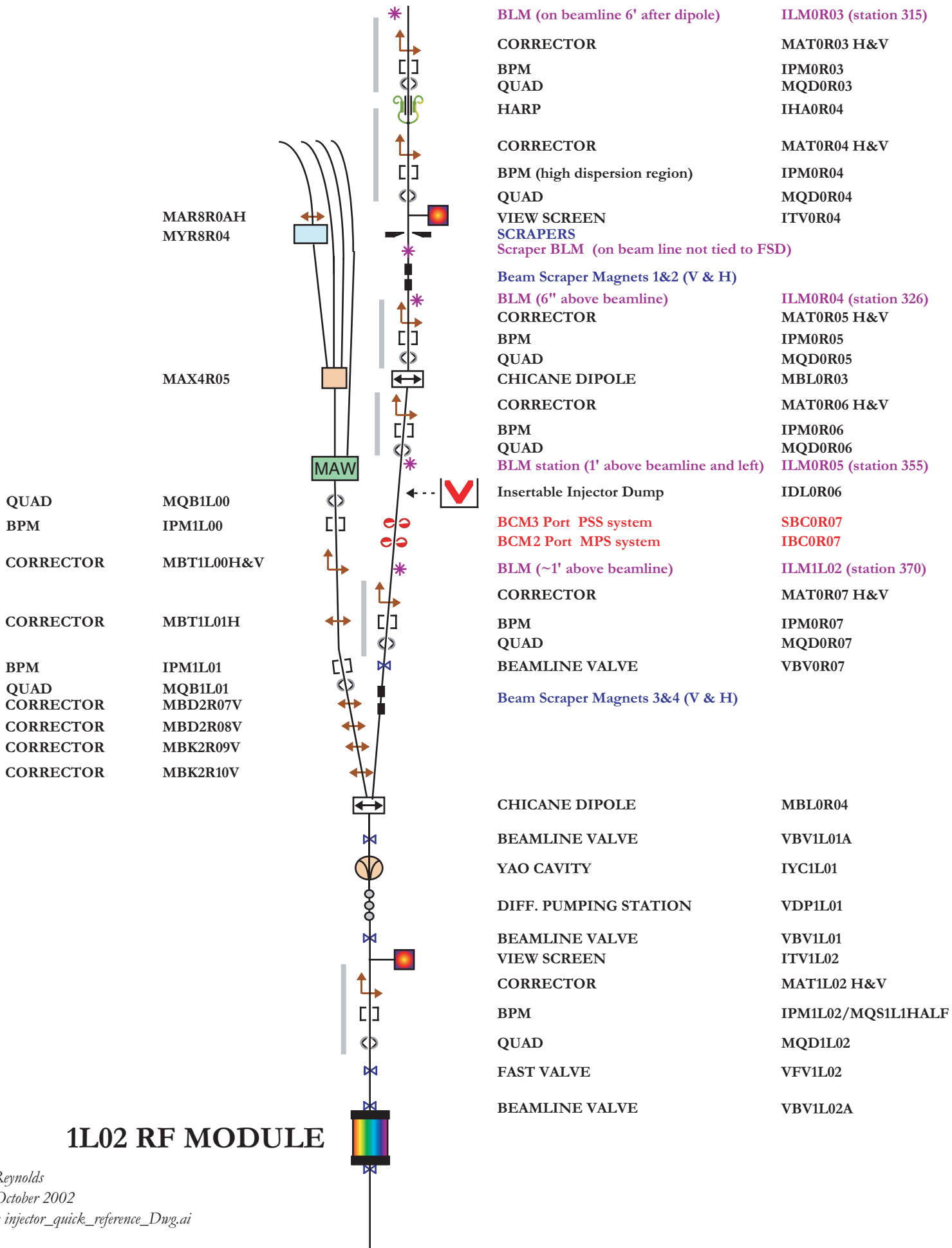
T= 500keV .86c

1/4 CRYO MODULE

T= 5MeV







1L02 RF MODULE