

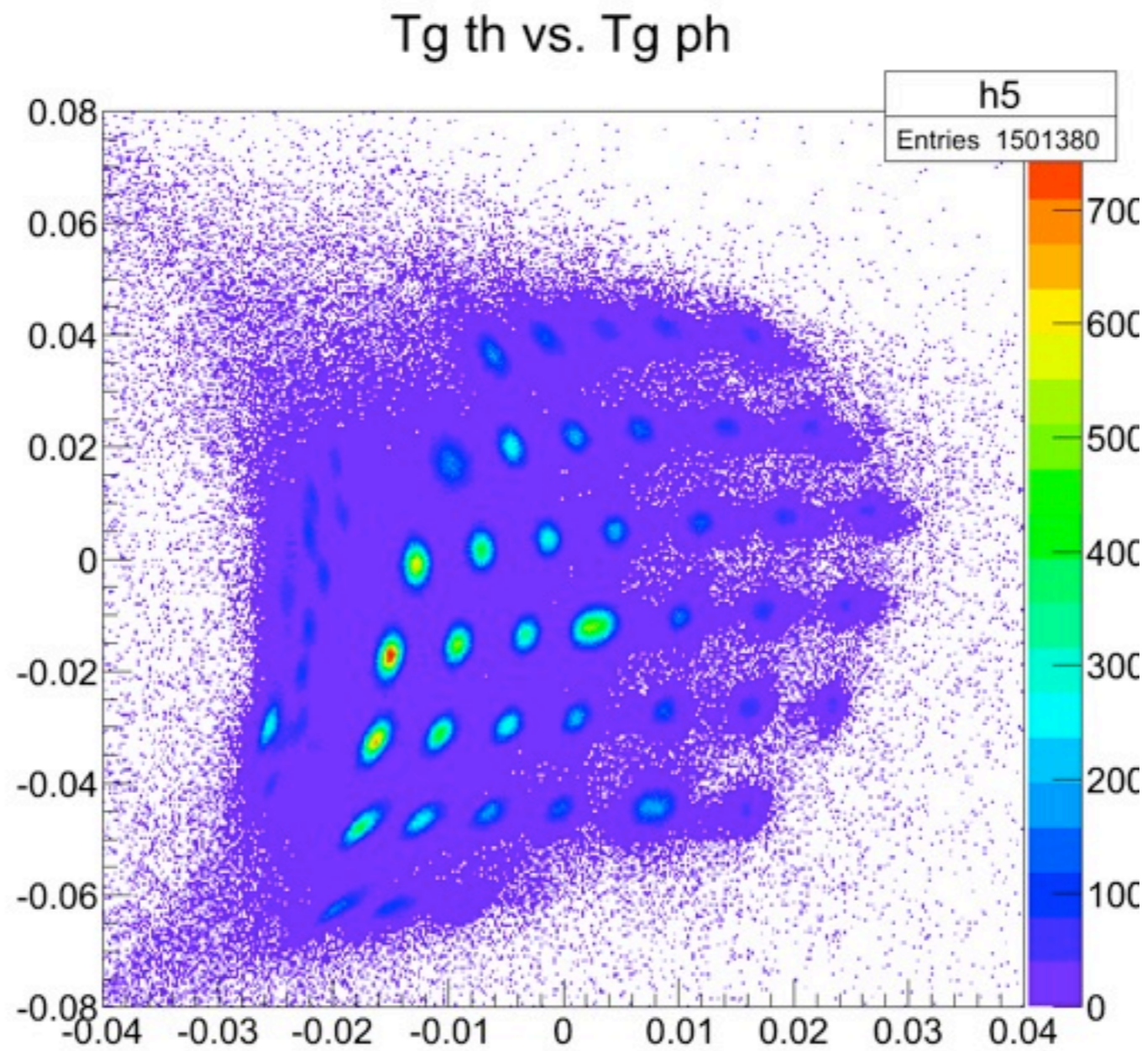
# Longitudinal Optics Status Update

Chao Gu

# Longitudinal Optics

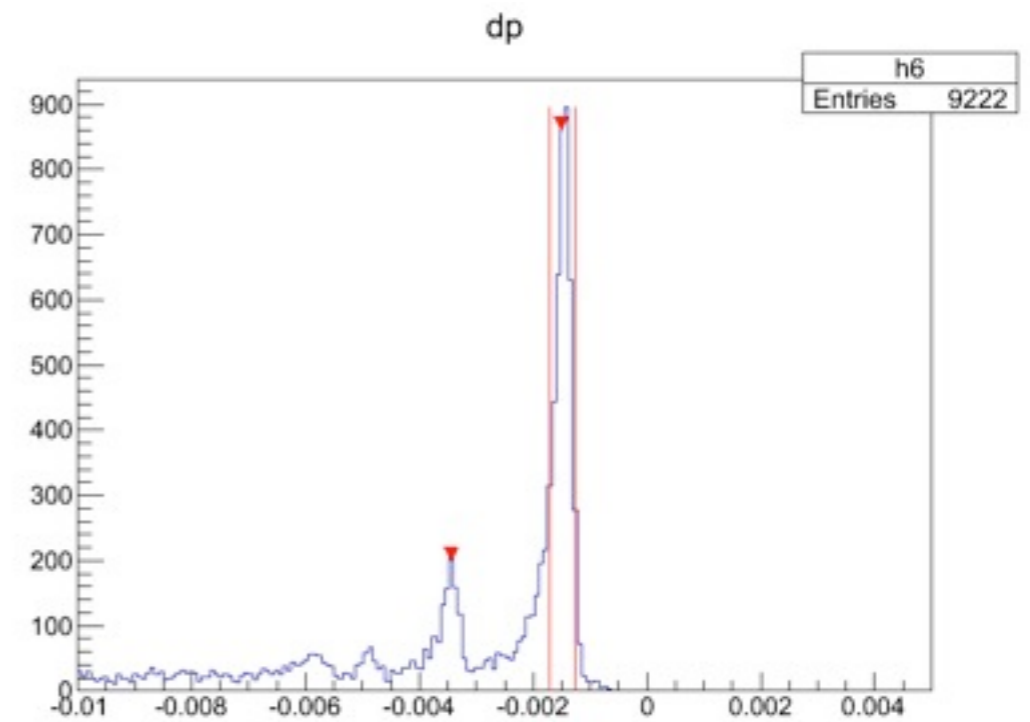
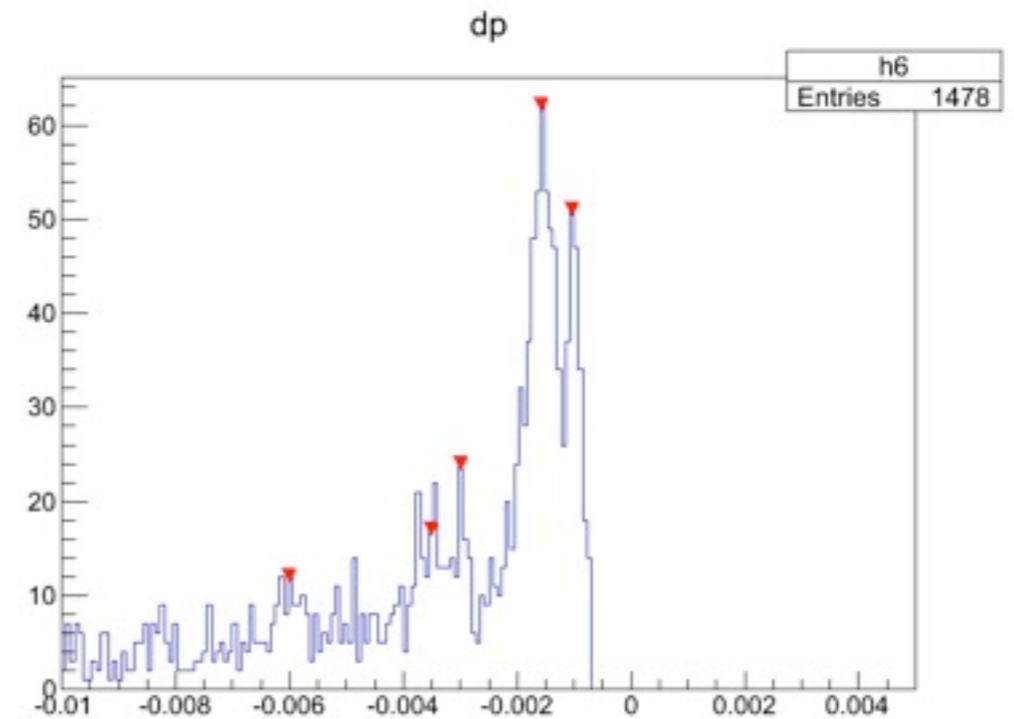
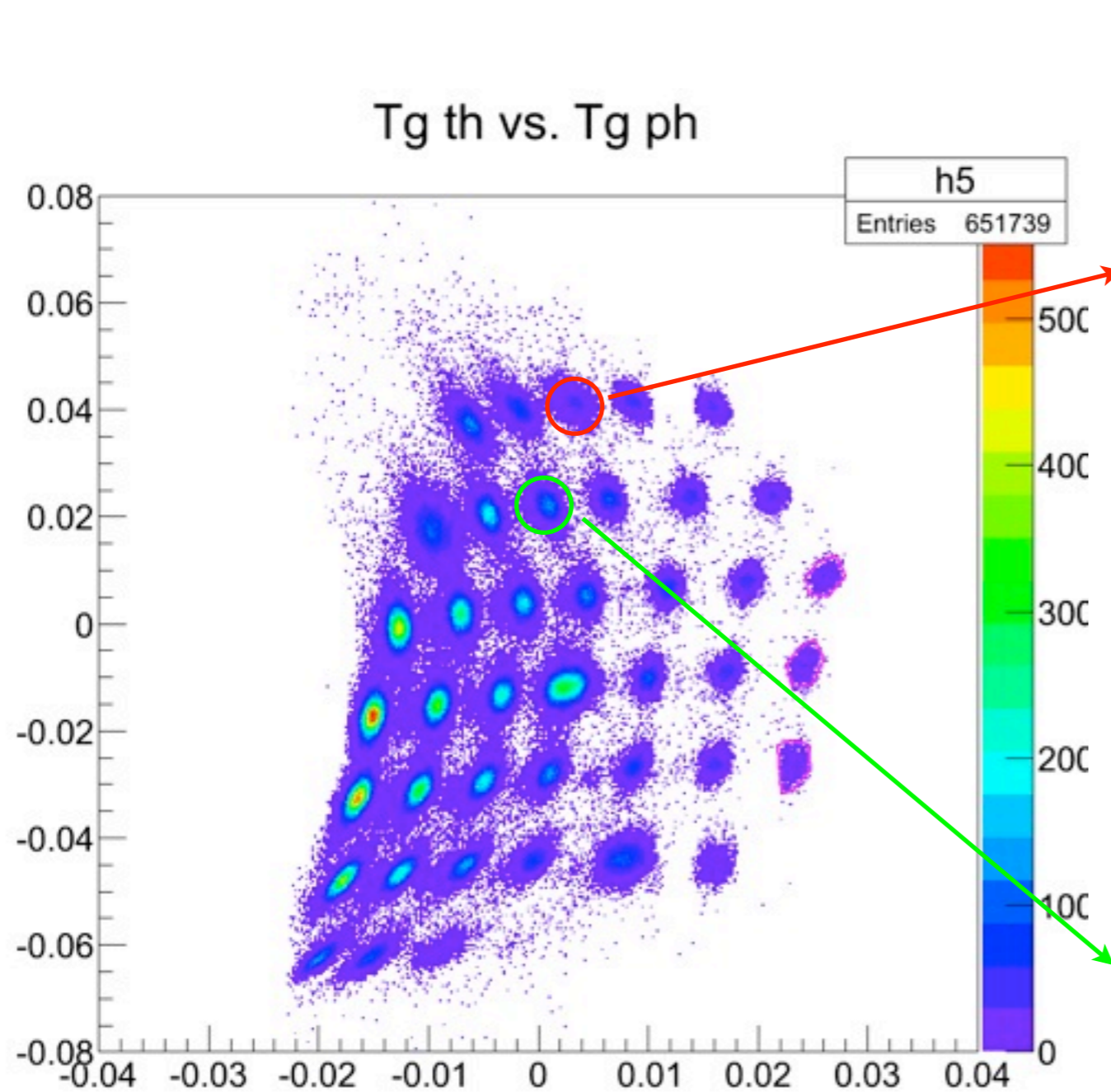
- This time:
  - Make  $d_p$  cut for each sieve hole

# Select Cuts



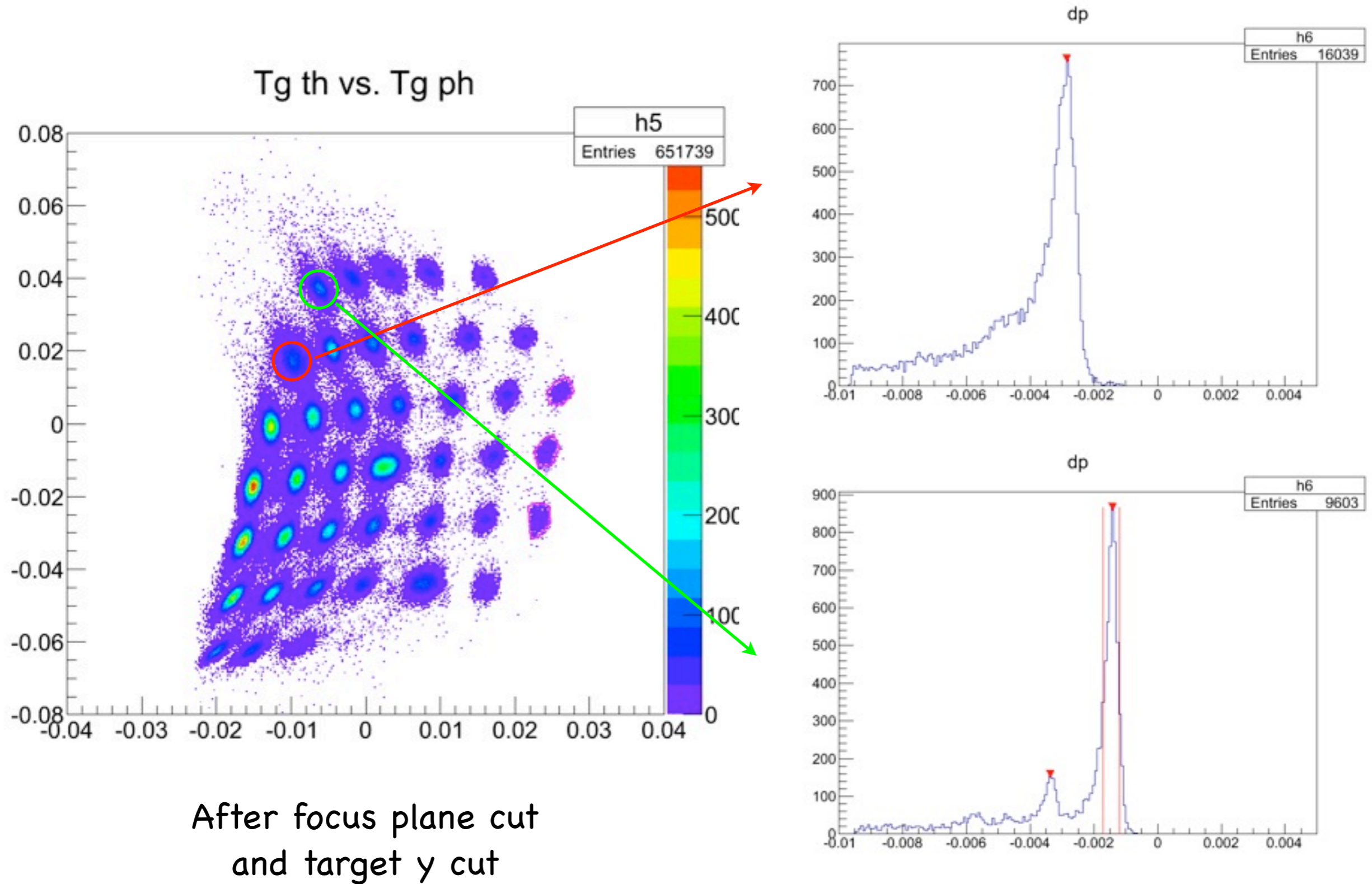
No cuts

# Select Cuts

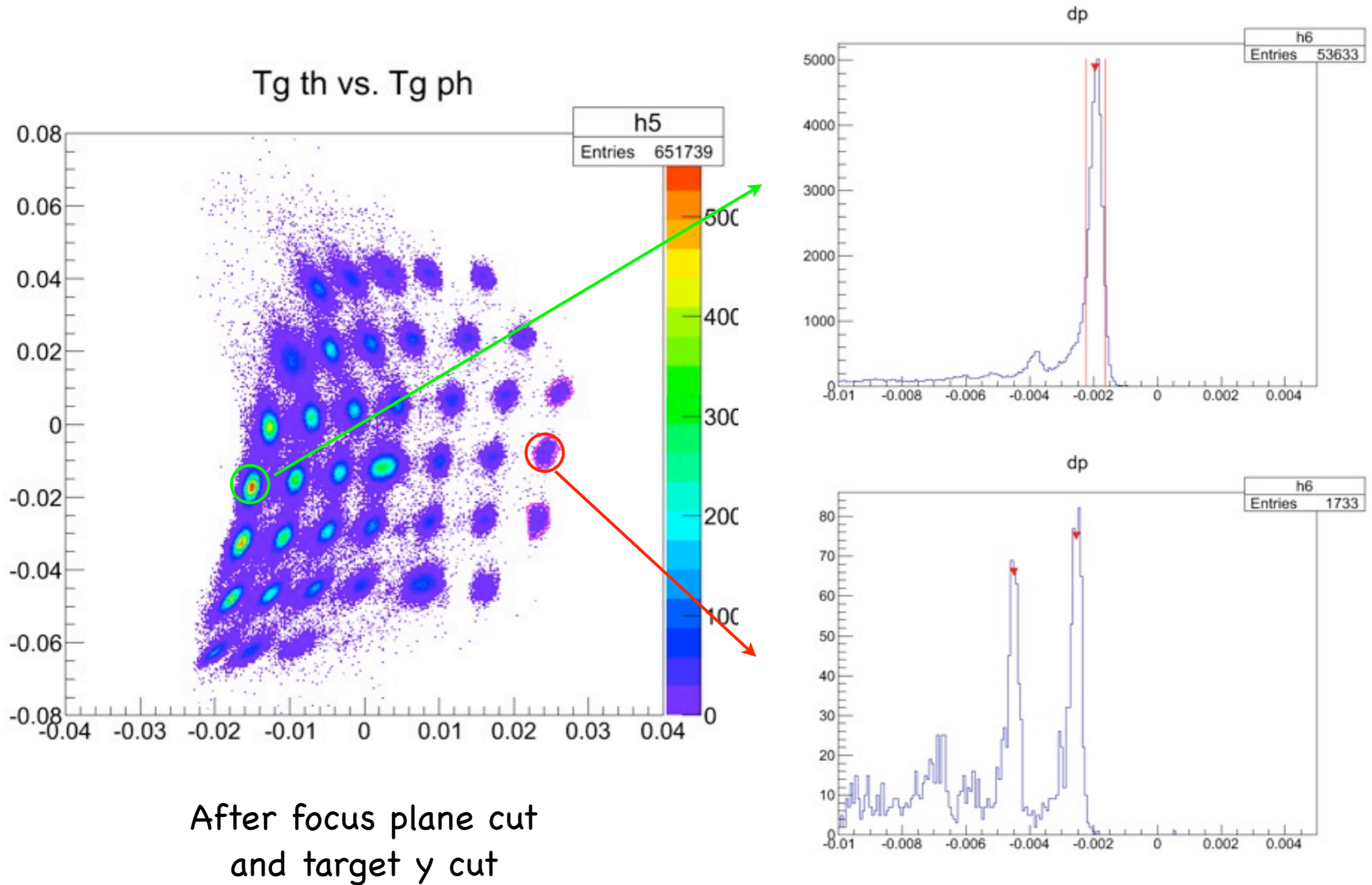


After focus plane cut  
and target y cut

# Select Cuts

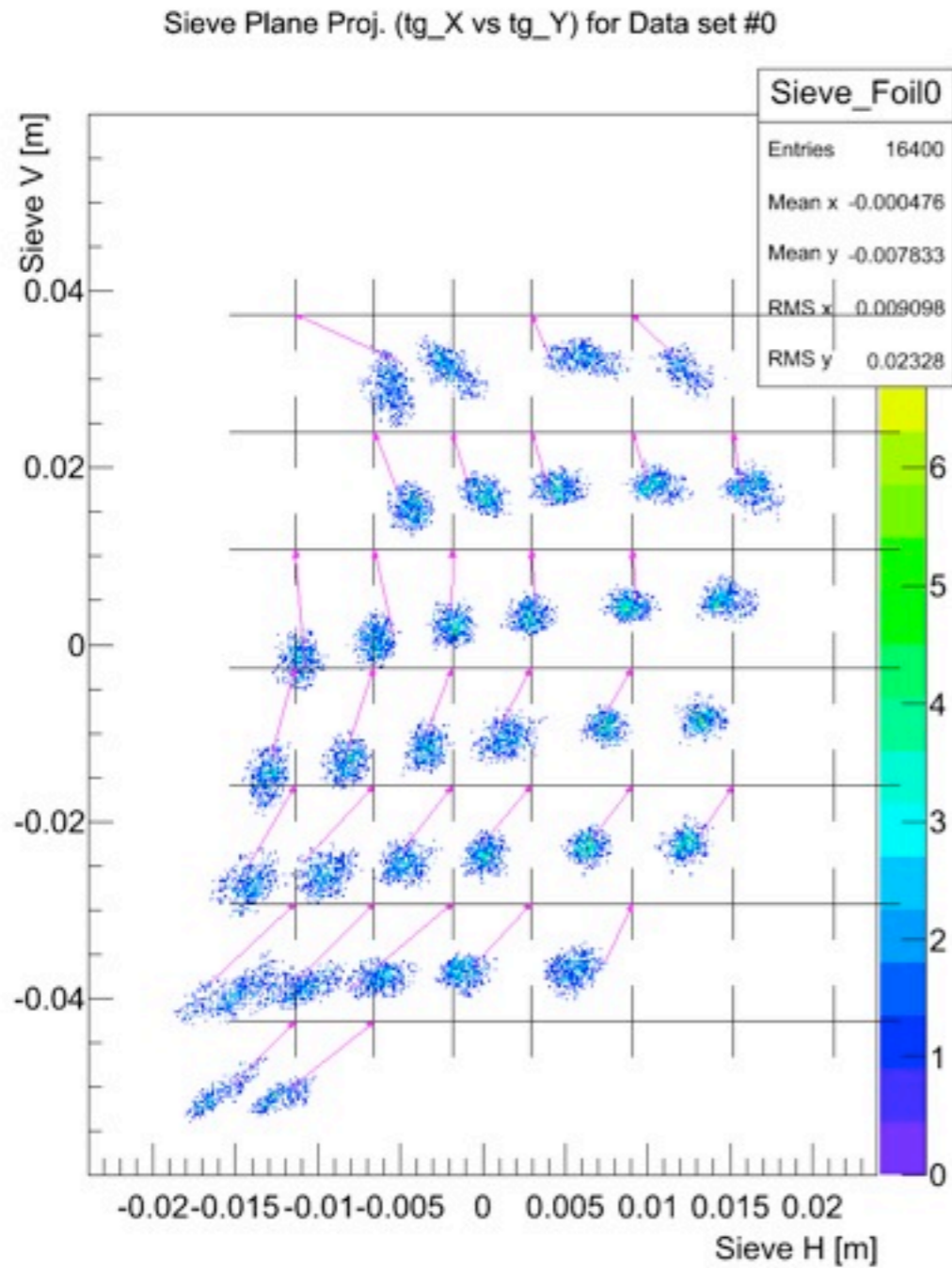


# Select Cuts

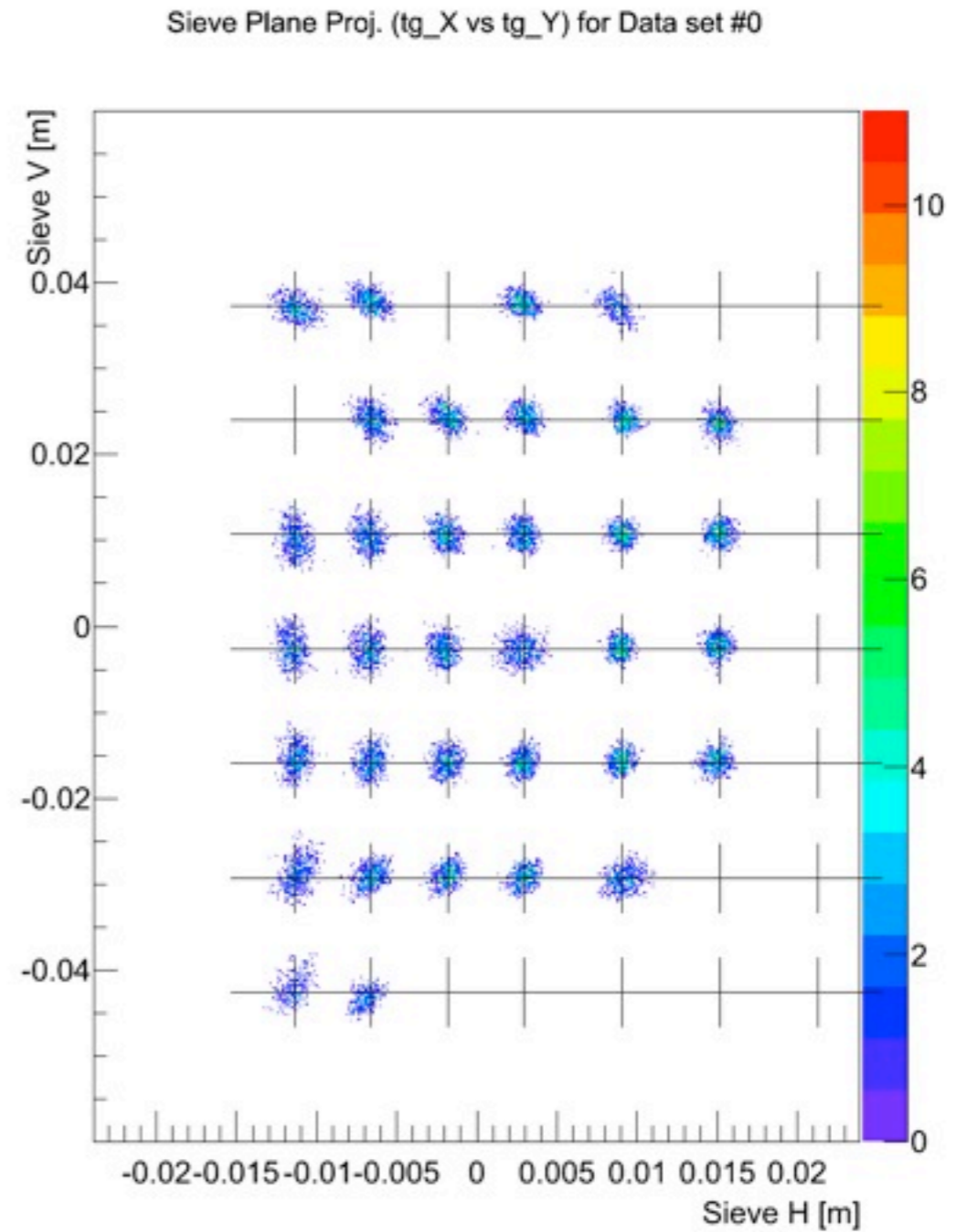


# Matrix Calibration

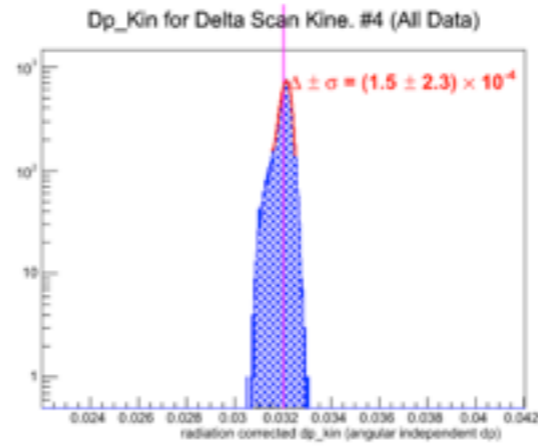
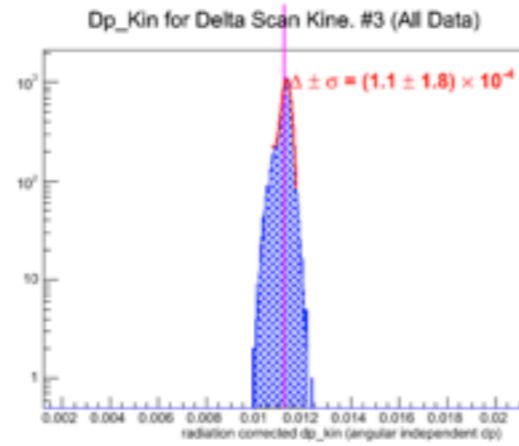
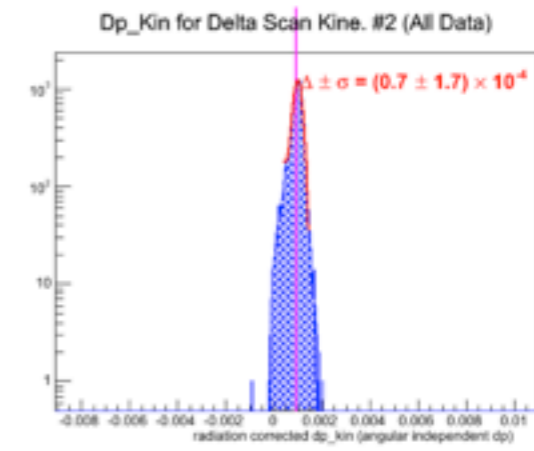
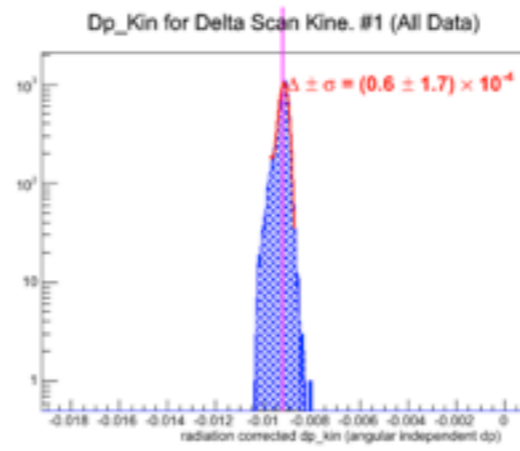
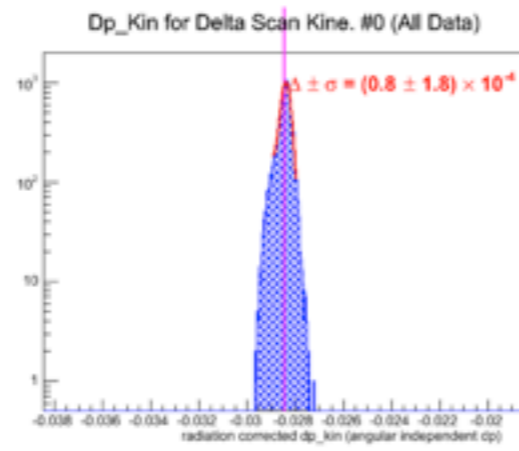
Before Optimize



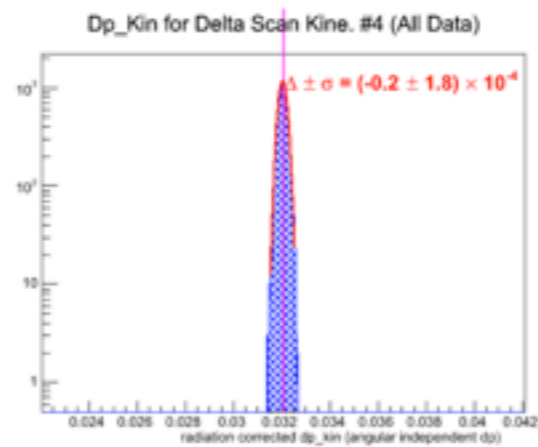
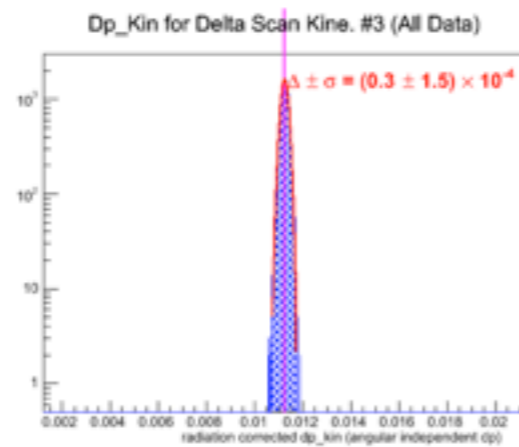
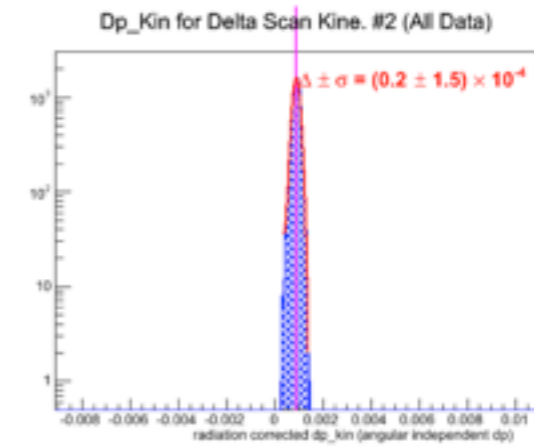
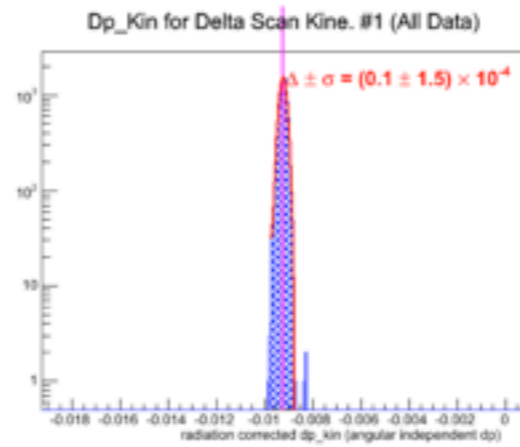
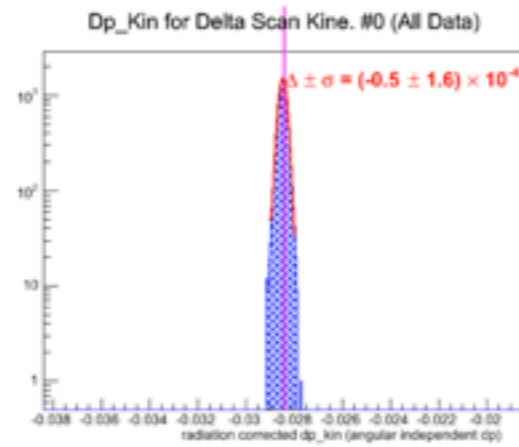
After 1 iteration



General dp cut



dp cut on each hole





# TODO

- Modify the optimization package to directly use target  $y$  to do  $y$  direction calibration
- 2nd iteration
- Right arm
- Any suggestion from this meeting