

Optics Status Update

Chao Gu

Optics Status

- 2 Major jobs:
 - SNAKE model in simulation
 - Matrix calibration
- Straight through optics calibration:
 - No LHe: Min did this setting
 - Large beam offset at horizontal direction
 - 1st order matrix element has some problem
 - With LHe: this talk

First Order Matrix

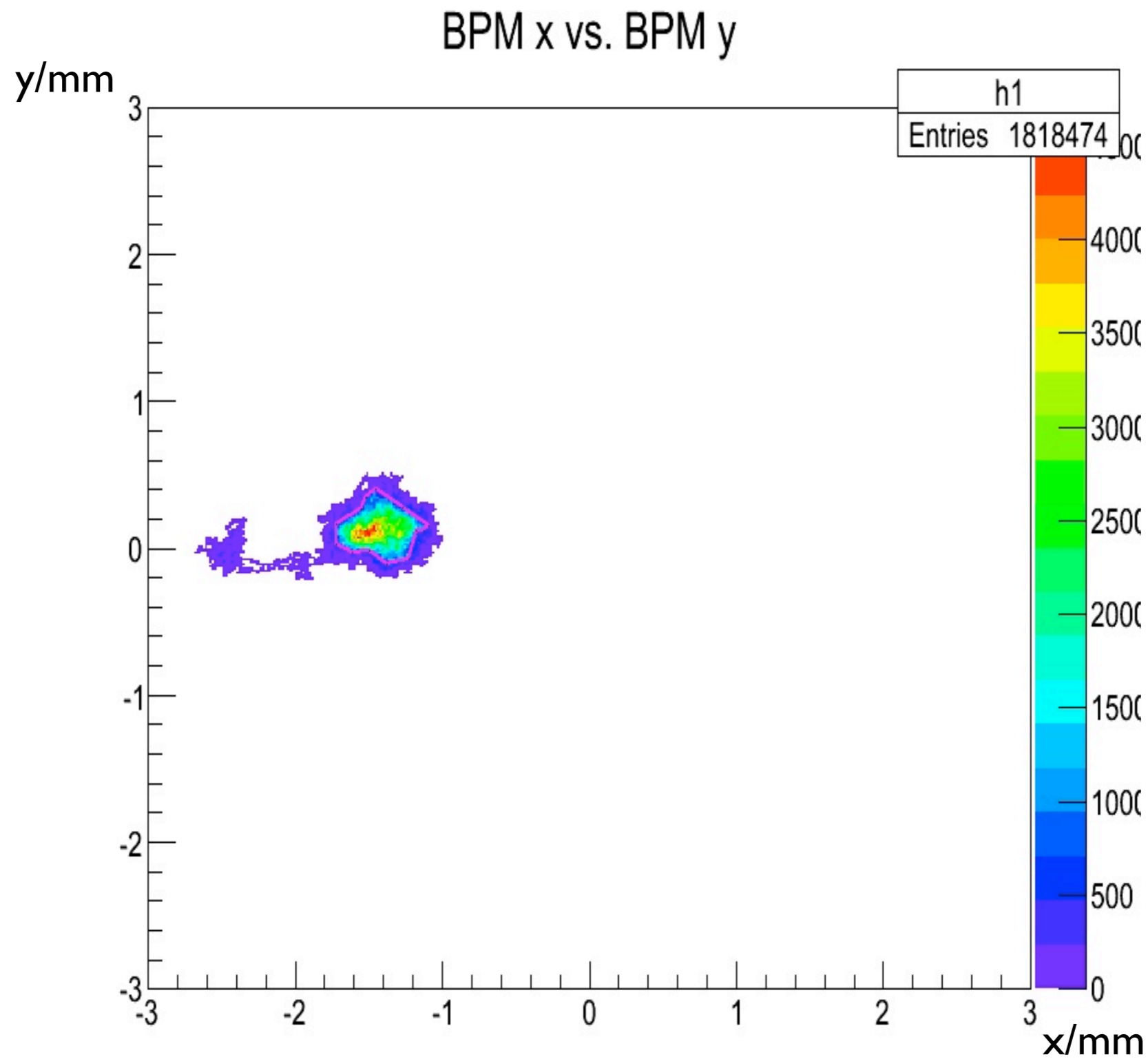
SNAKE:

theta_tg	=	1.967E-2	x	-2.330	theta	
		-2.886E-3	y	-4.511E-2	phi	-1.385E-3
phi_tg	=	4.948E-3	x	-5.233E-2	theta	
		-6.645E-1	y	-2.682E-1	phi	+4.577E-3
delta	=	7.454E-2	x	-1.340E-2	theta	
		-8.752E-3	y	-5.387E-3	phi	-5.309E-4

Database:

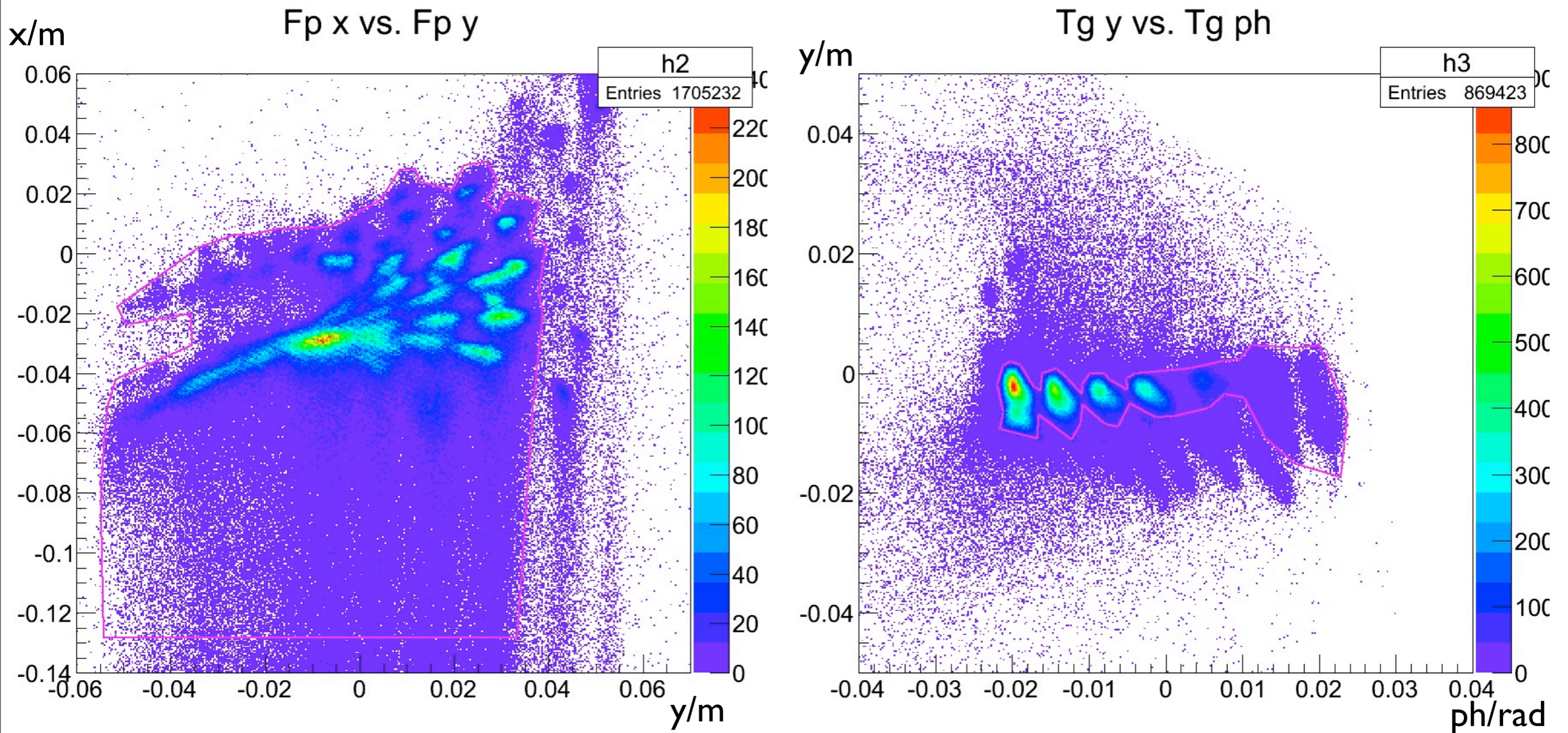
theta_tg	=	2.531E-2	x	-2.813	theta	
		-1.205E-1	y	+1.689E-1	phi	-1.691E-3
phi_tg	=	6.164E-3	x	-1.851E-3	theta	
		-6.747E-1	y	+3.182E-1	phi	-4.709E-3
delta	=	7.469E-2	x	-3.060E-2	theta	
		-1.254E-2	y	+2.702E-3	phi	-1.092E-4

Beam position cut



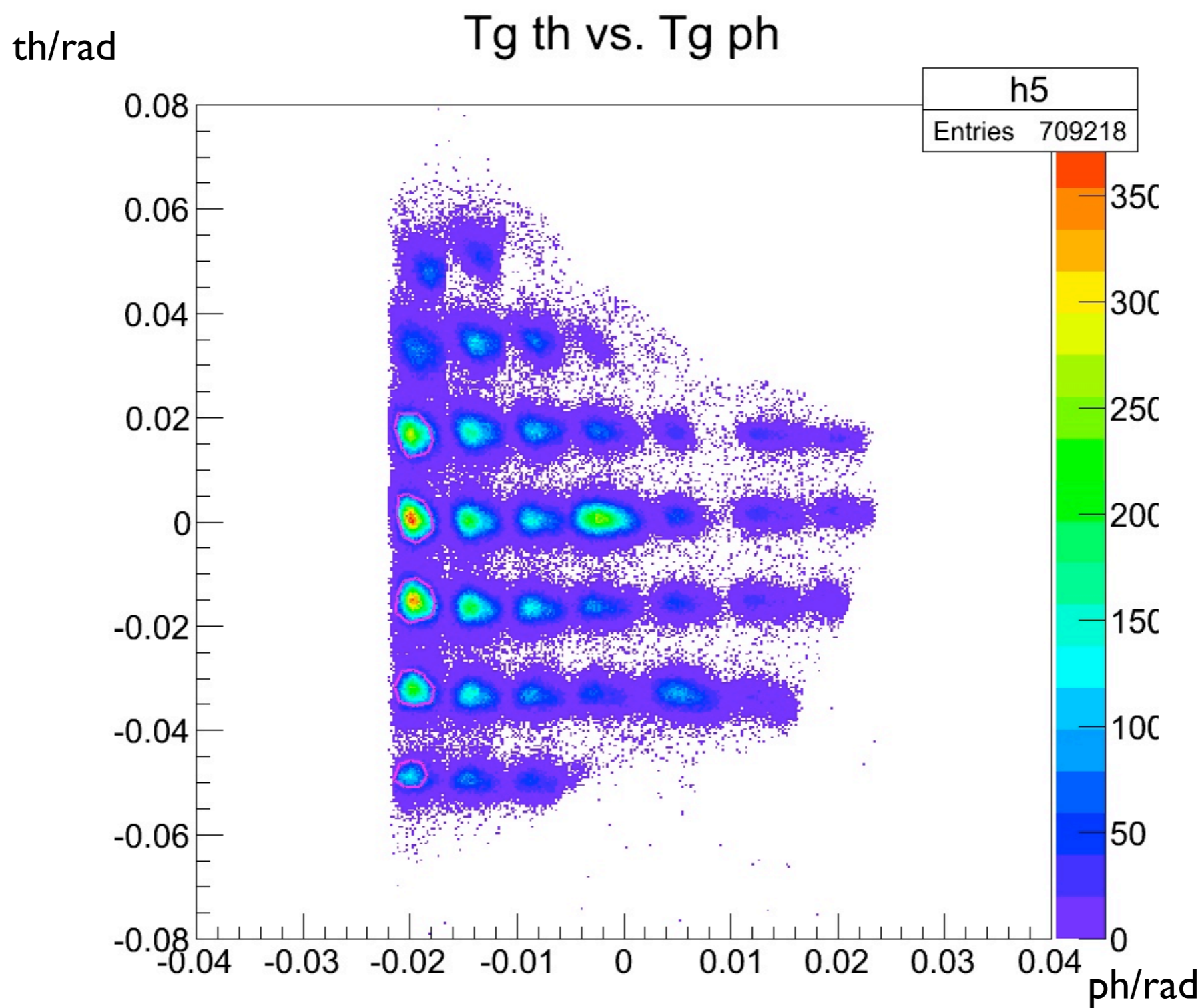
- From the most recent BPM package
- Still have ~1.5mm offset at horizontal direction

Select Cuts



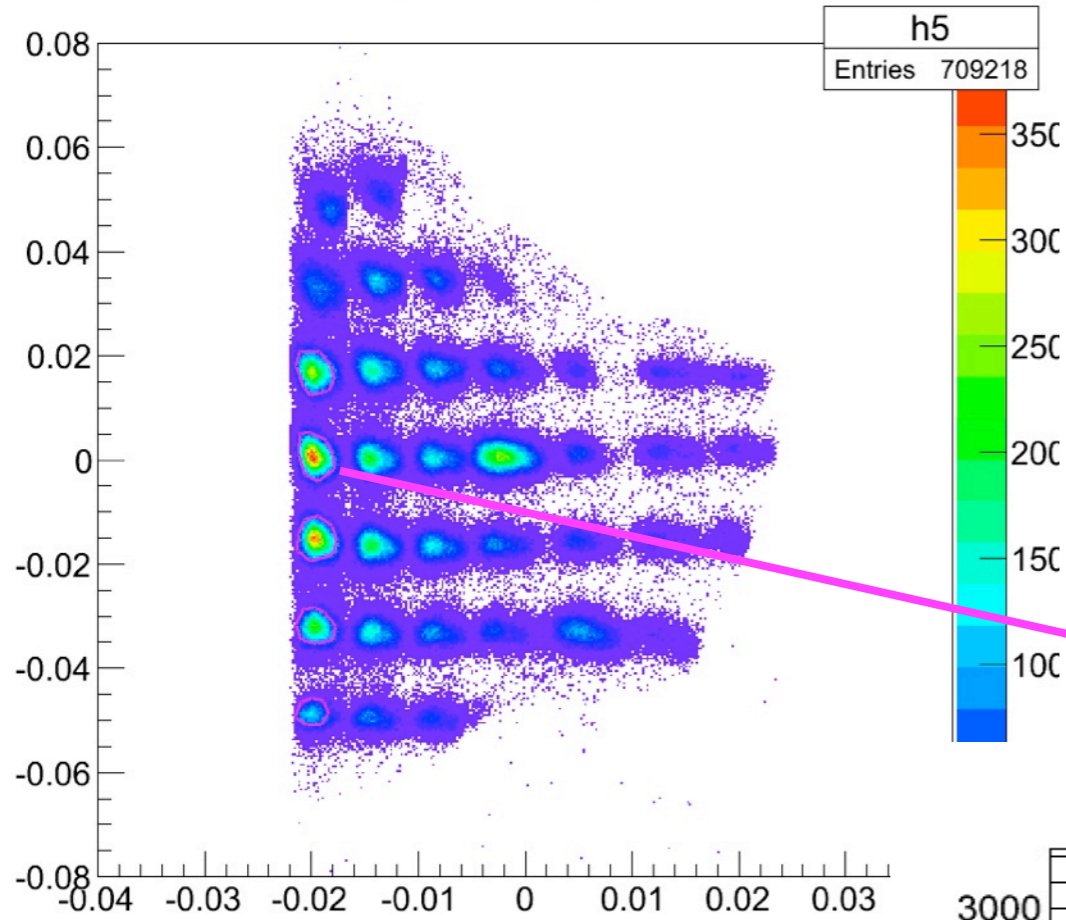
- Apply cuts on focus plane and y_{tg} to clean data

Sieve hole cut

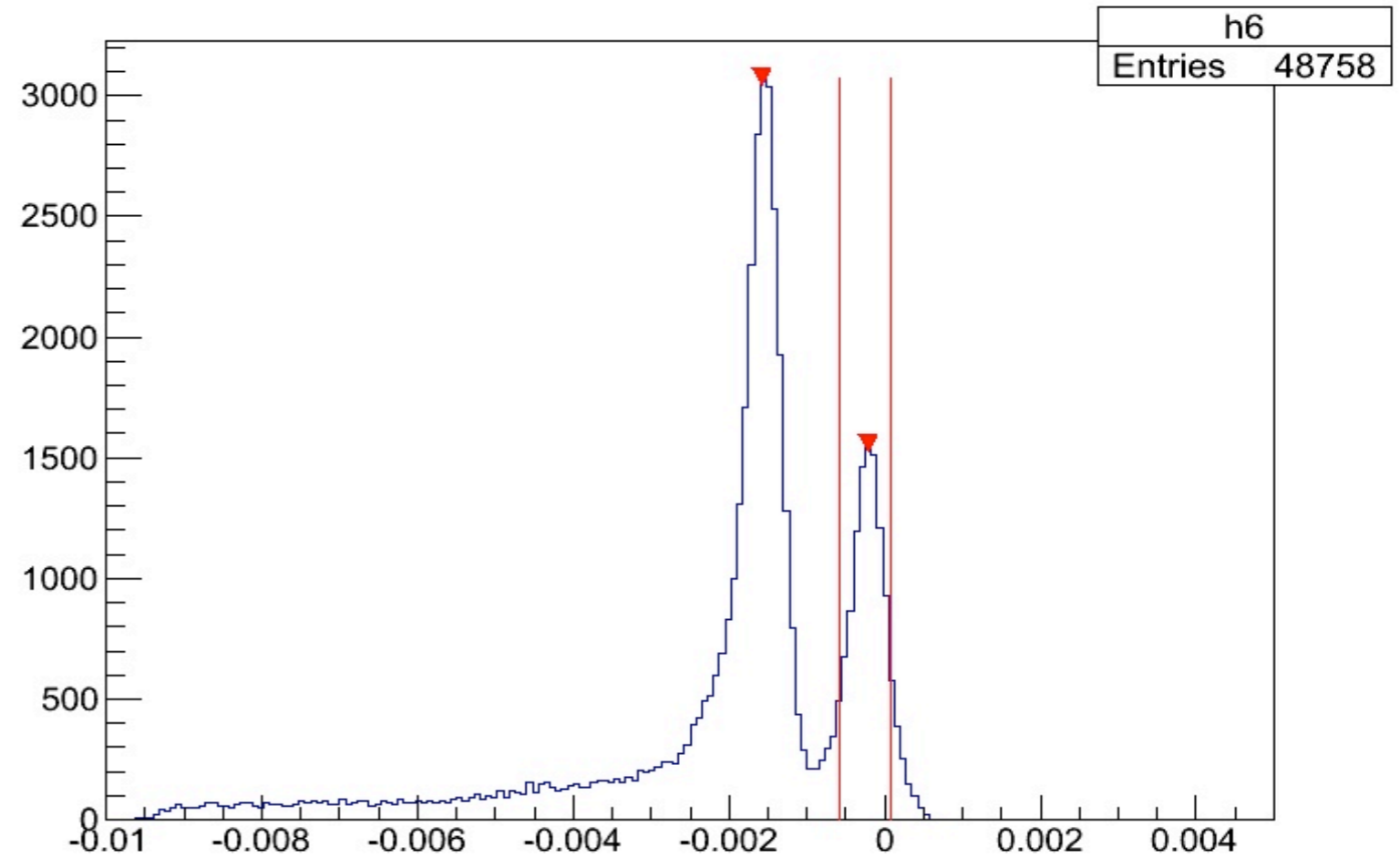


dp cut

Tg th vs. Tg ph

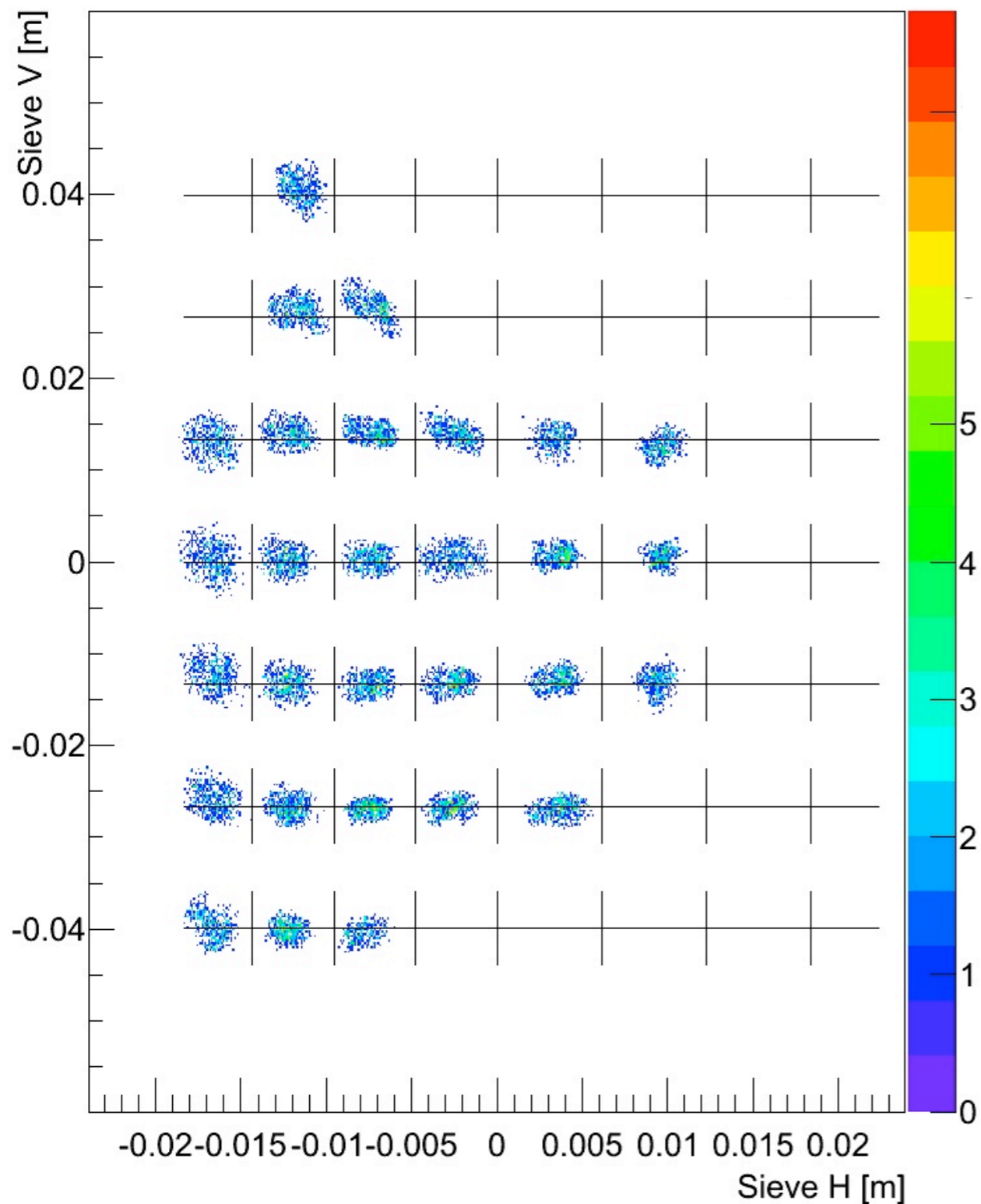


- 1-D dp cut
- He peak and C peak are distinguishable

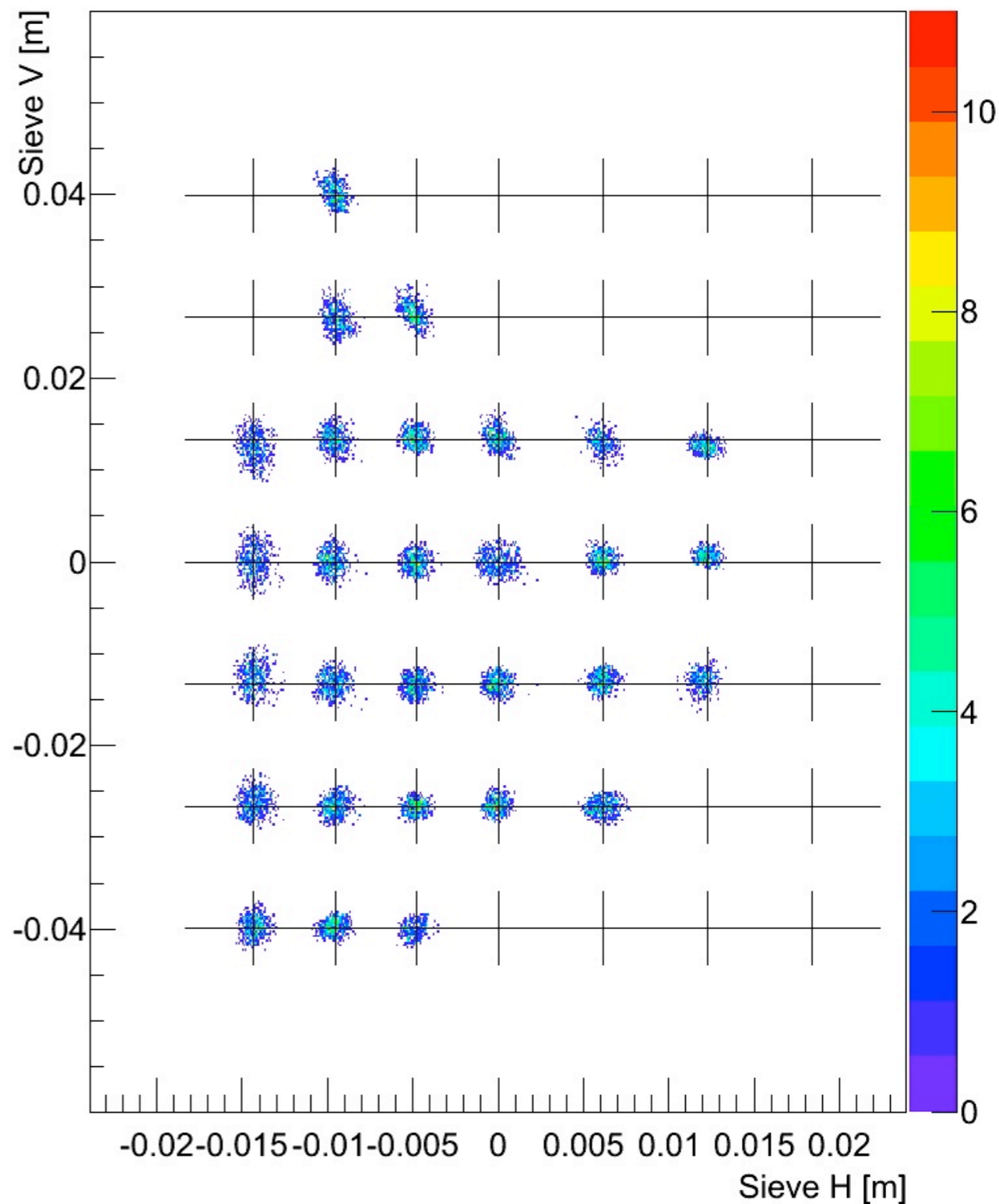


Calibration Result

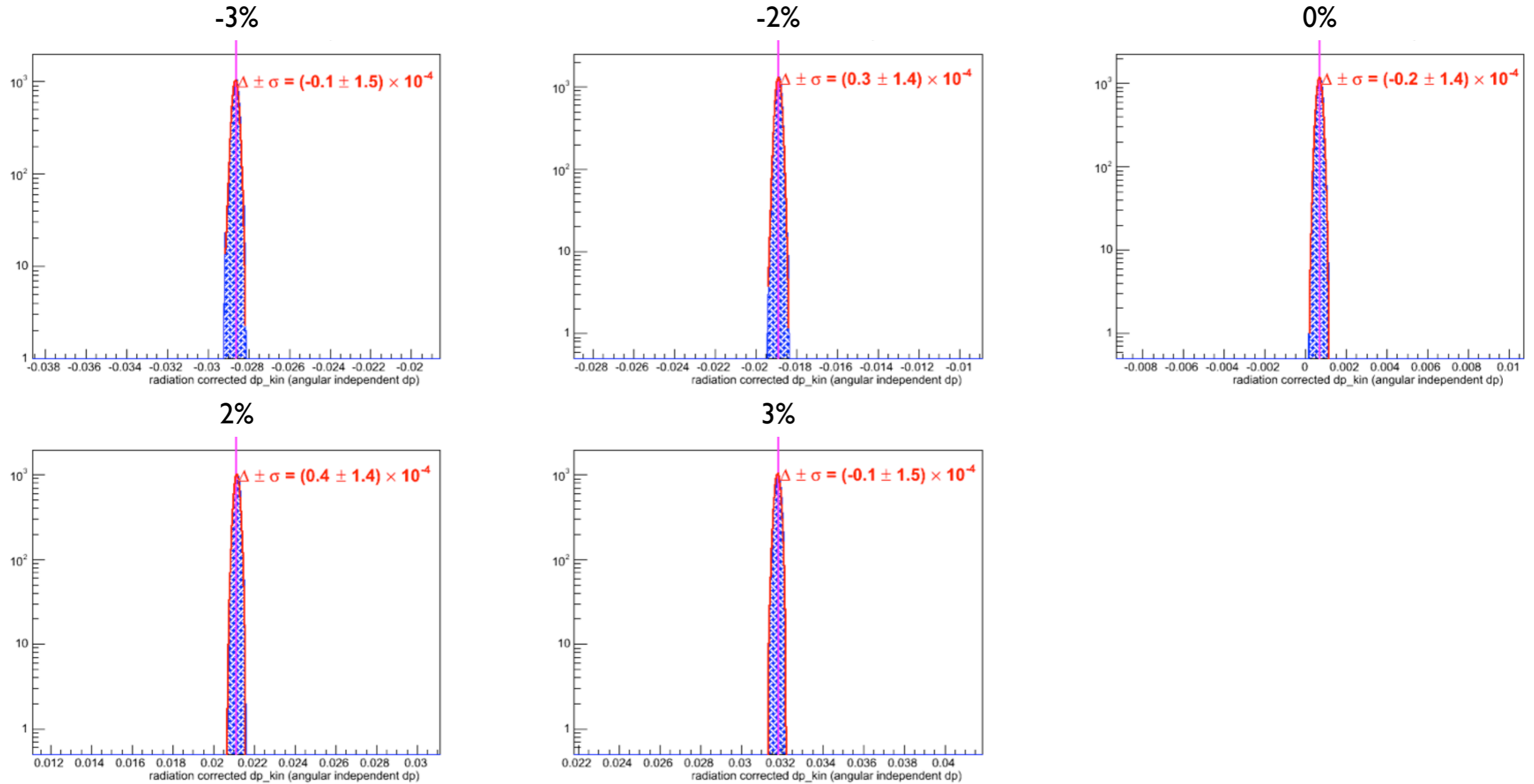
Before optimize



After optimize



Calibration Result



First Order Matrix

- Will compare to the latest SNAKE model later
- Use lower order to redo the optimize and compare the result (working on this)

No LHe:

$$\begin{array}{l} \text{theta_tg} = \begin{array}{ll} 2.531\text{E-}2 & \text{x} \quad -2.813 \\ -1.205\text{E-}1 & \text{y} \quad +1.689\text{E-}1 \end{array} \quad \begin{array}{ll} \text{theta} & \\ \text{phi} & -1.691\text{E-}3 \end{array} \\ \text{phi_tg} = \begin{array}{ll} 6.164\text{E-}3 & \text{x} \quad -1.851\text{E-}3 \\ -6.747\text{E-}1 & \text{y} \quad +3.182\text{E-}1 \end{array} \quad \begin{array}{ll} \text{theta} & \\ \text{phi} & -4.709\text{E-}3 \end{array} \end{array}$$

With LHe (better beam position):

$$\begin{array}{l} \text{theta_tg} = \begin{array}{ll} 2.204\text{E-}2 & \text{x} \quad -2.746 \\ -1.961\text{E-}3 & \text{y} \quad +3.797\text{E-}3 \end{array} \quad \begin{array}{ll} \text{theta} & \\ \text{phi} & +1.152\text{E-}3 \end{array} \\ \text{phi_tg} = \begin{array}{ll} 1.789\text{E-}2 & \text{x} \quad +1.136\text{E-}2 \\ -7.271\text{E-}1 & \text{y} \quad +4.274\text{E-}1 \end{array} \quad \begin{array}{ll} \text{theta} & \\ \text{phi} & -1.951\text{E-}3 \end{array} \end{array}$$

Optics Status

- TODO:
 - Finish the database optimize
 - Check matrix calibration result
 - γ_{tg} calibration on this setting