

Optics Status Update

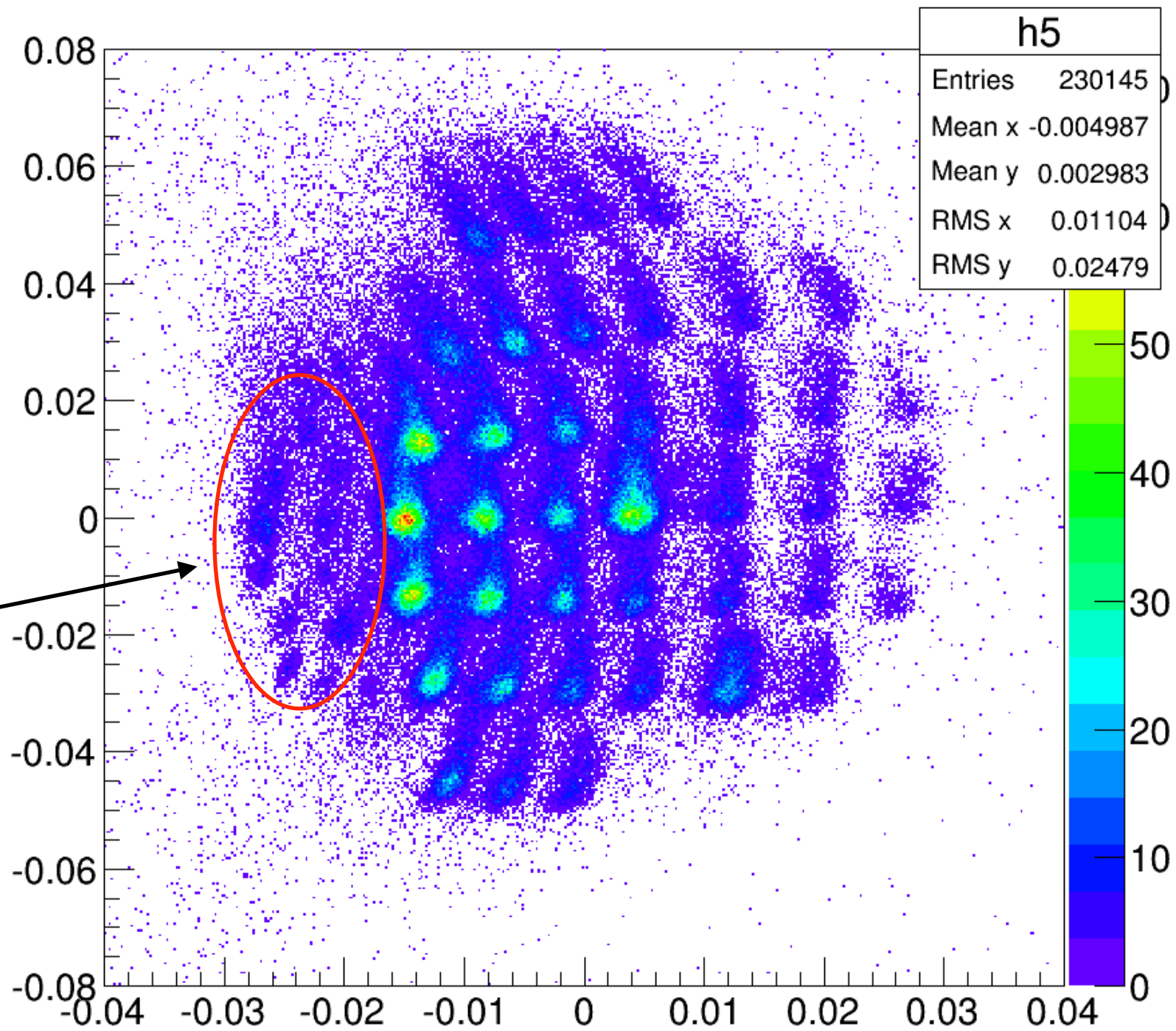
Chao Gu

Target Y Calibration Revise

- Use beam position scan to calibrate Y: since we only took data at $dp=0\%$, the calibration result only works for this small dp range, not good to use
- Jixie use geant4 to suggests that the target chamber upstream window has some acceptance by the Q1 entrance
- We did see something upstream in the optics data
- Try to use this data to do a y calibration, this will take all dp settings into account and will be more reliable

Y Calibration

Tg th vs. Tg ph

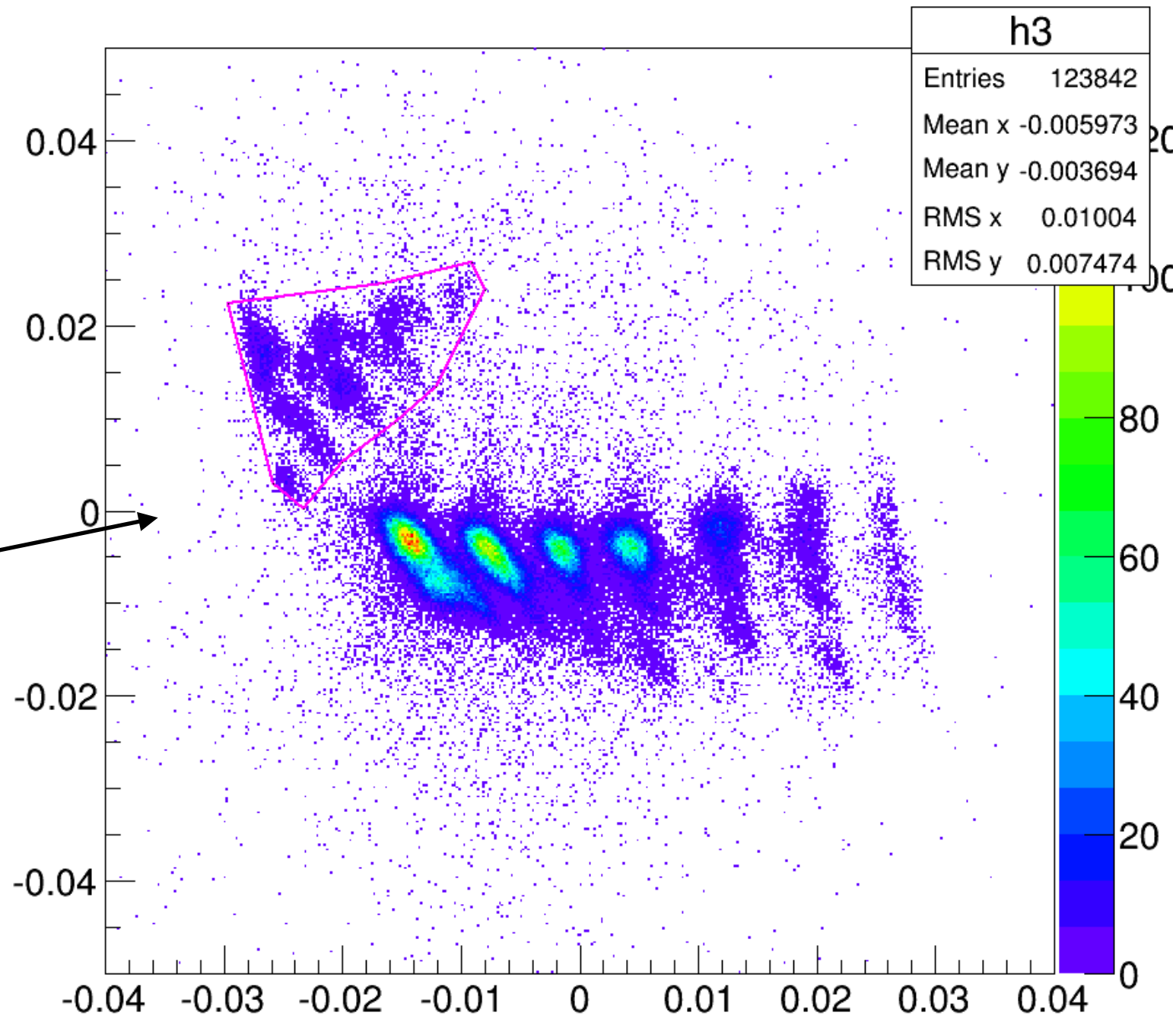


These data are possibly from the window

run 3185

Y Calibration

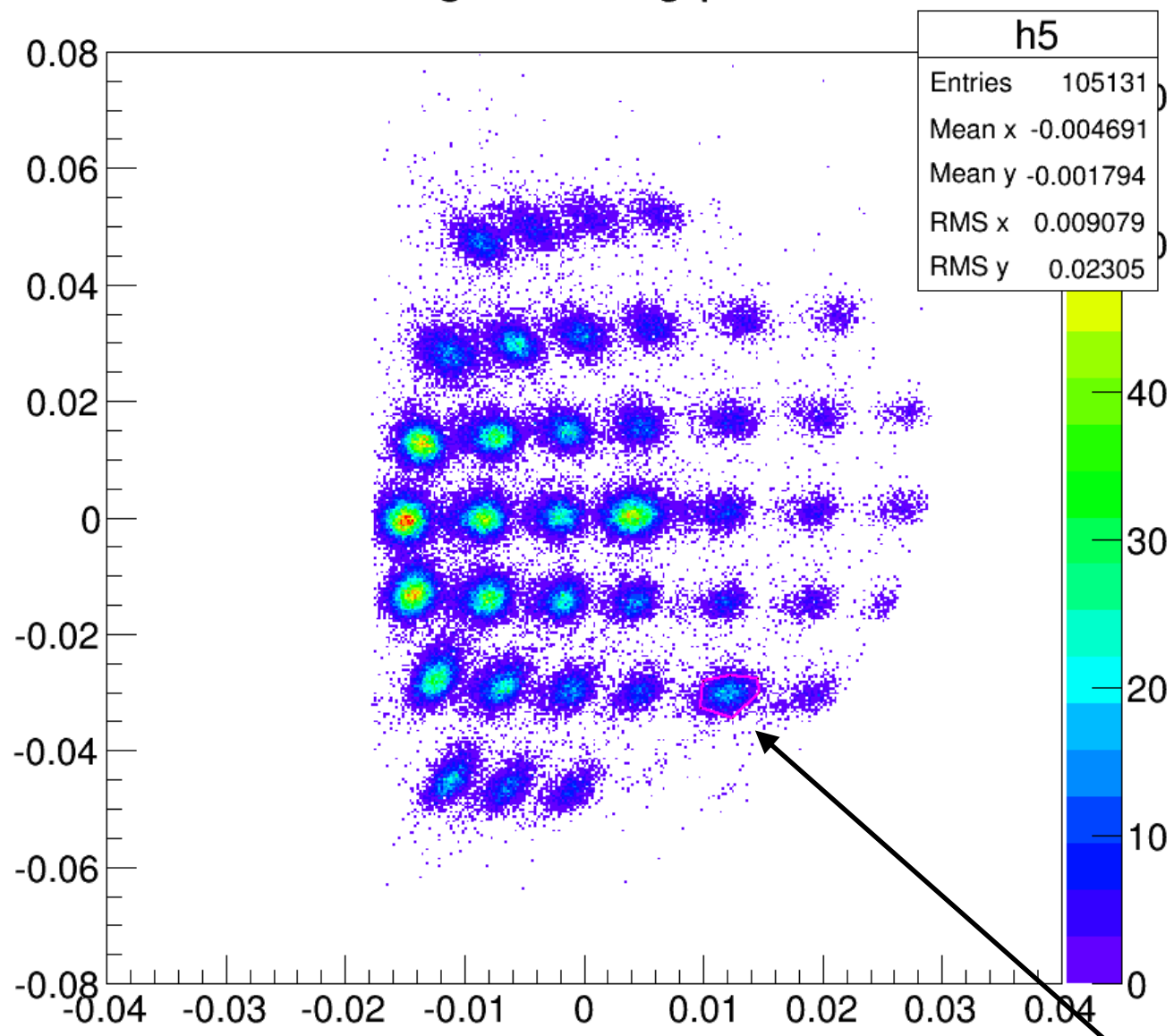
Tg y vs. Tg ph



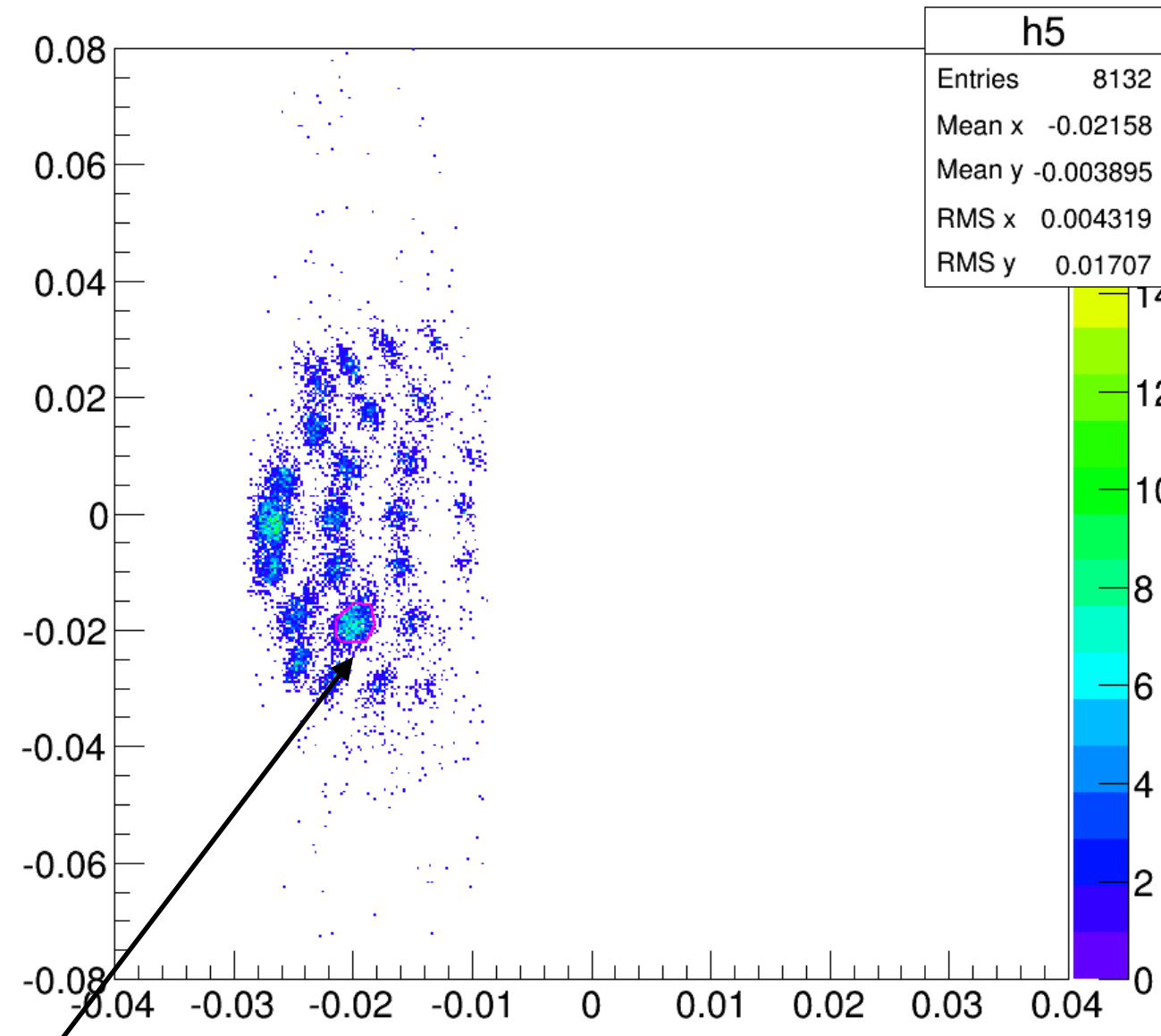
Use Vertex cut to select these data

Y Calibration

Tg th vs. Tg ph

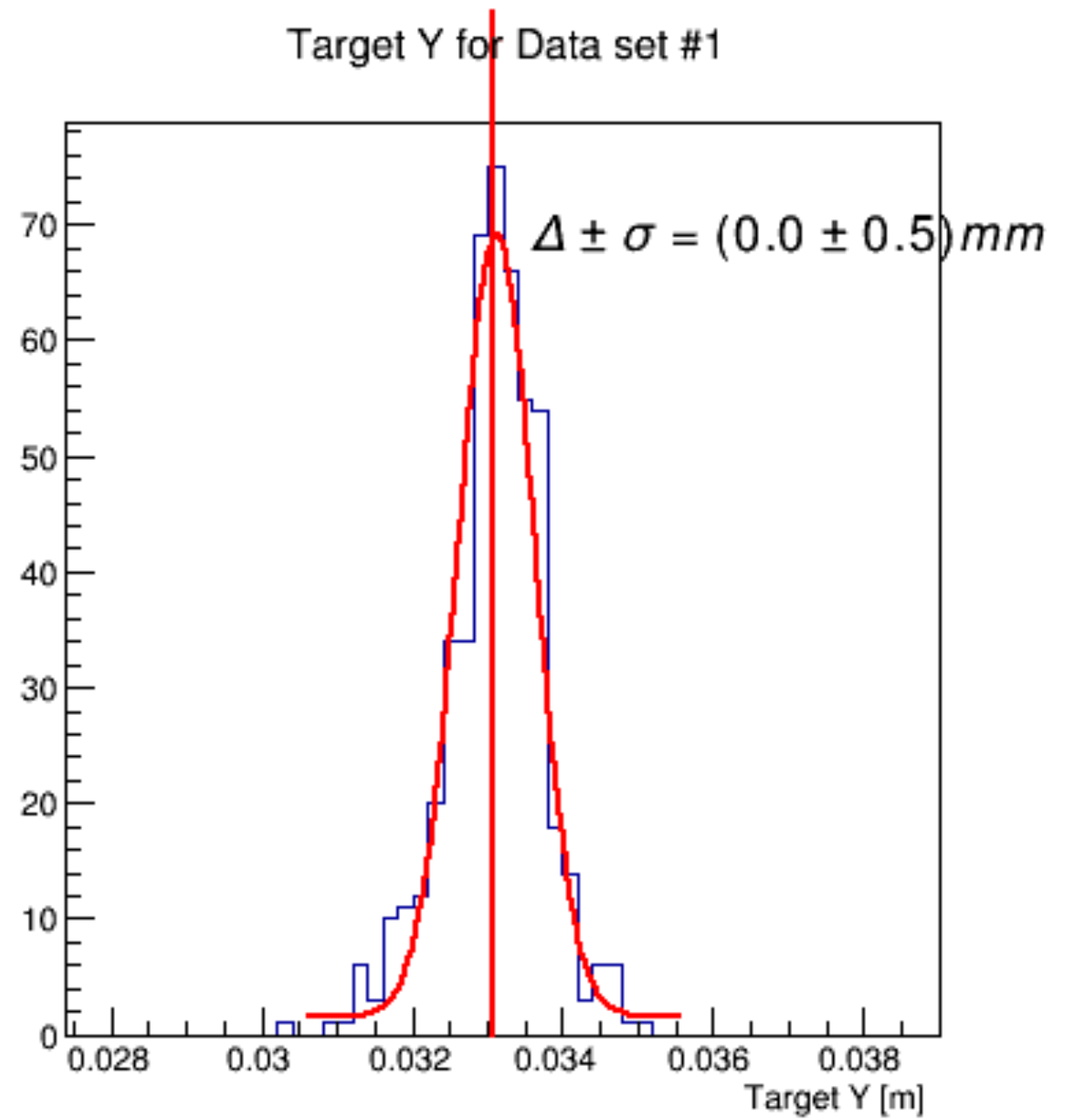
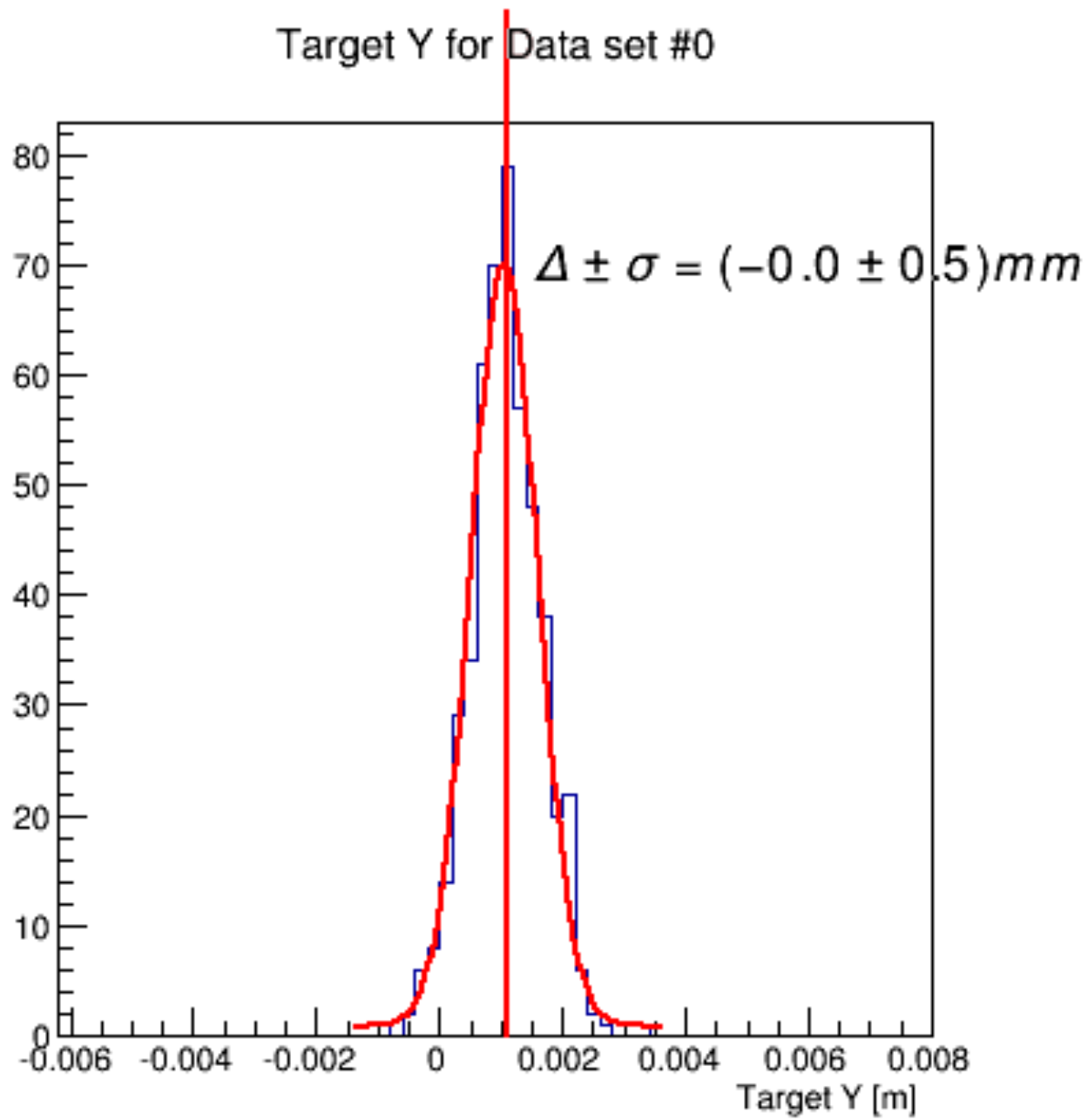


Tg th vs. Tg ph



Select only one hole

Result



Status

- The method seems working:
 - How to convince the data is actually coming from the window?
 - More iterations to go