

# Optics Status Update

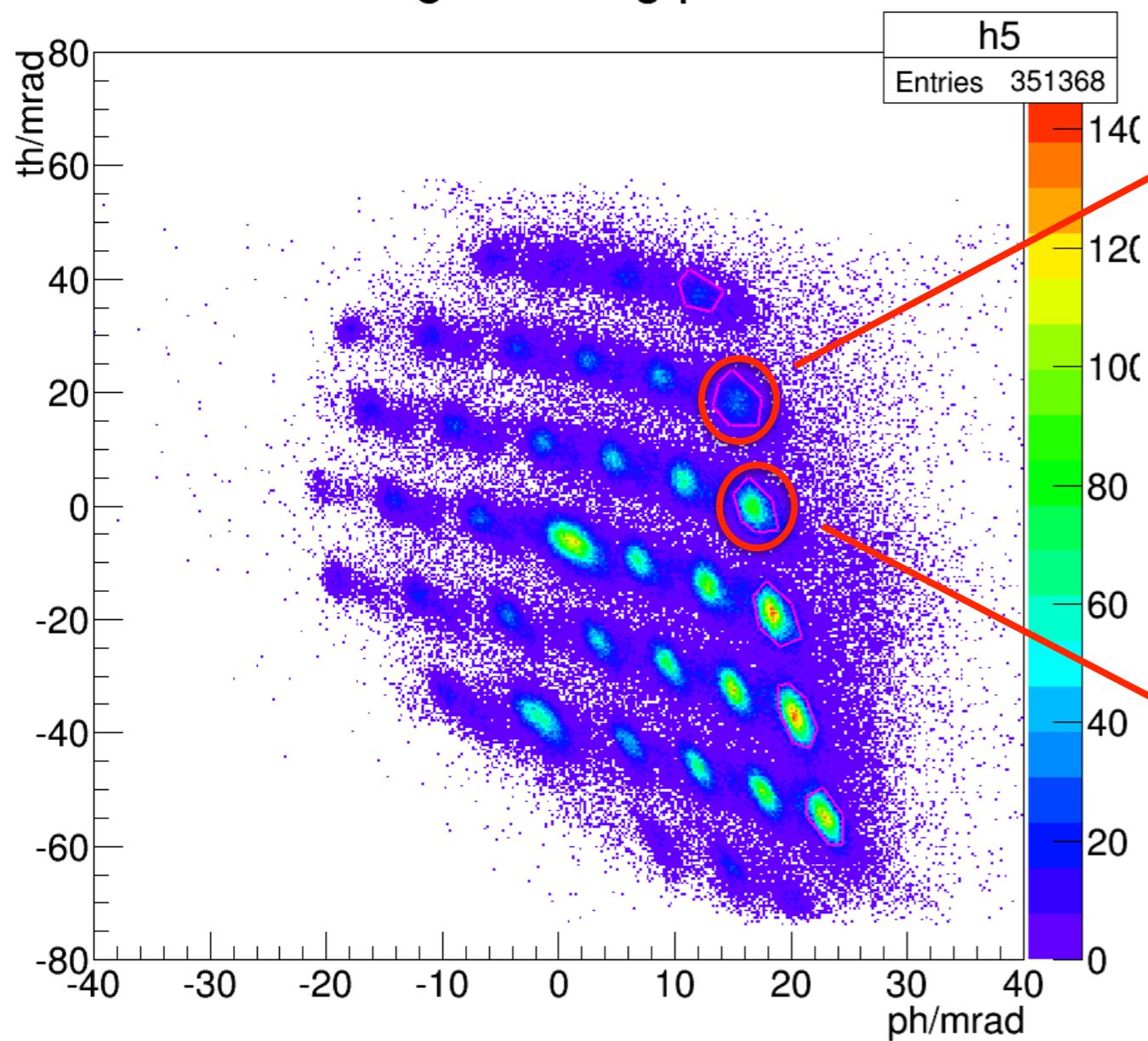
Chao Gu

# Calibration

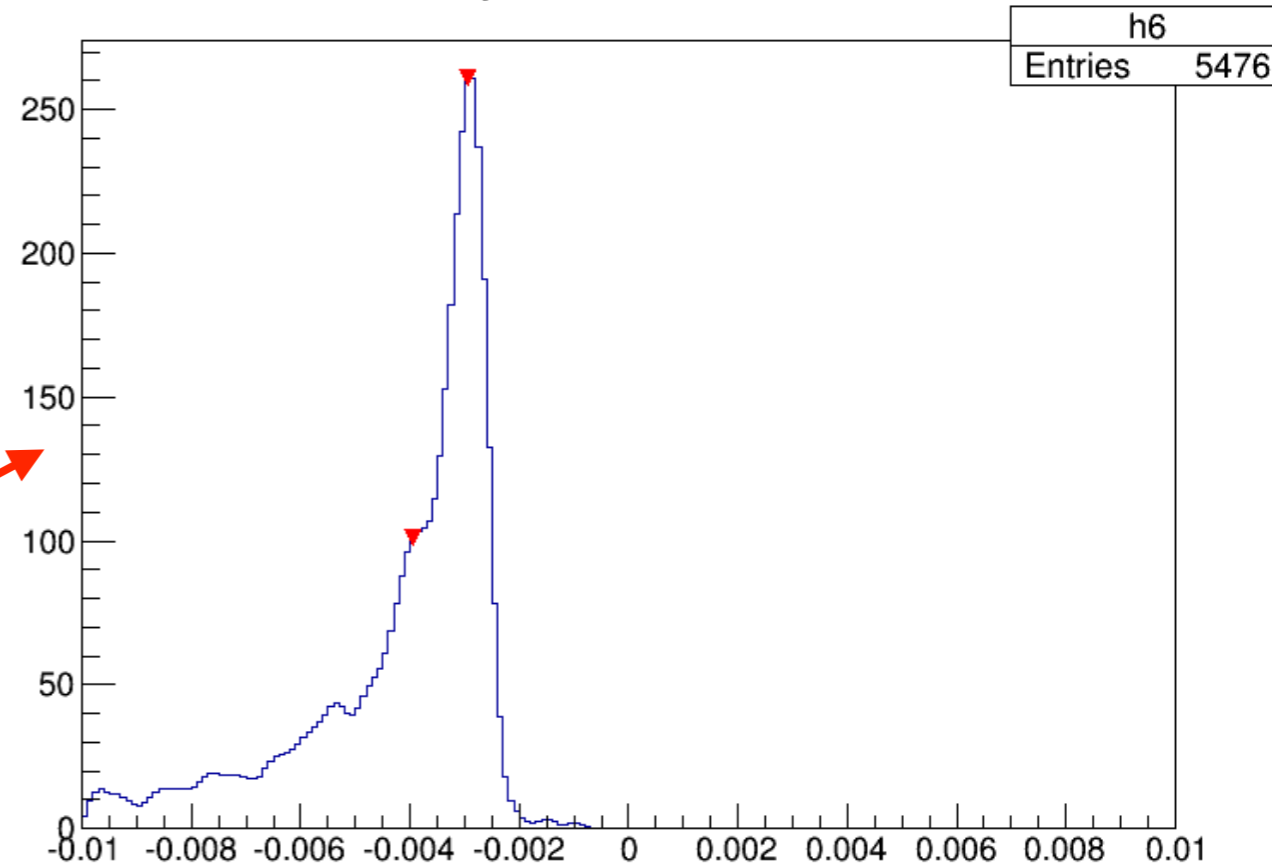
- Still working on the optics of RHRS, will give a report after finished
- A problem
  - the sieve hole (7, 6) has a bad dp distribution which we could not identify the reason

1.7GeV, 2.5T,  $dp = -3\%$

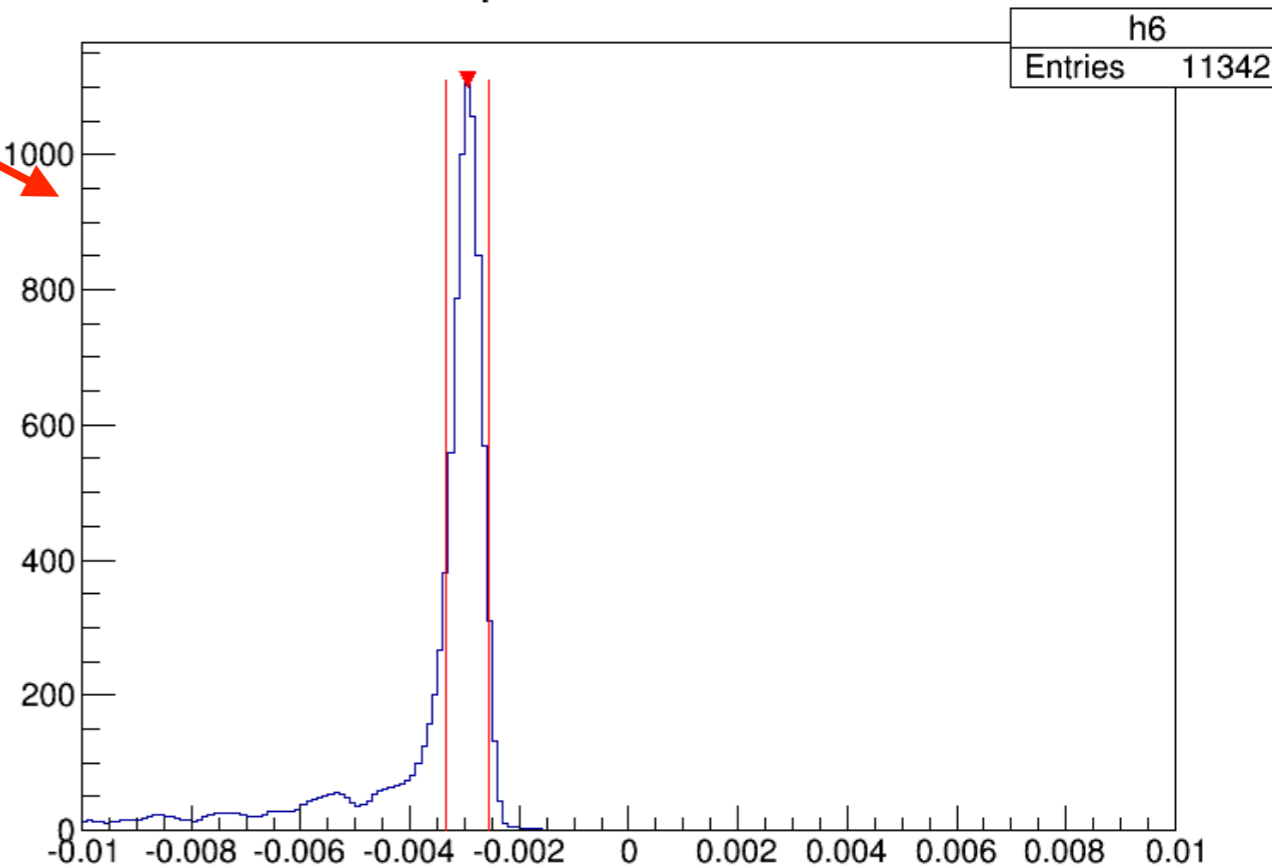
Tg th vs. Tg ph



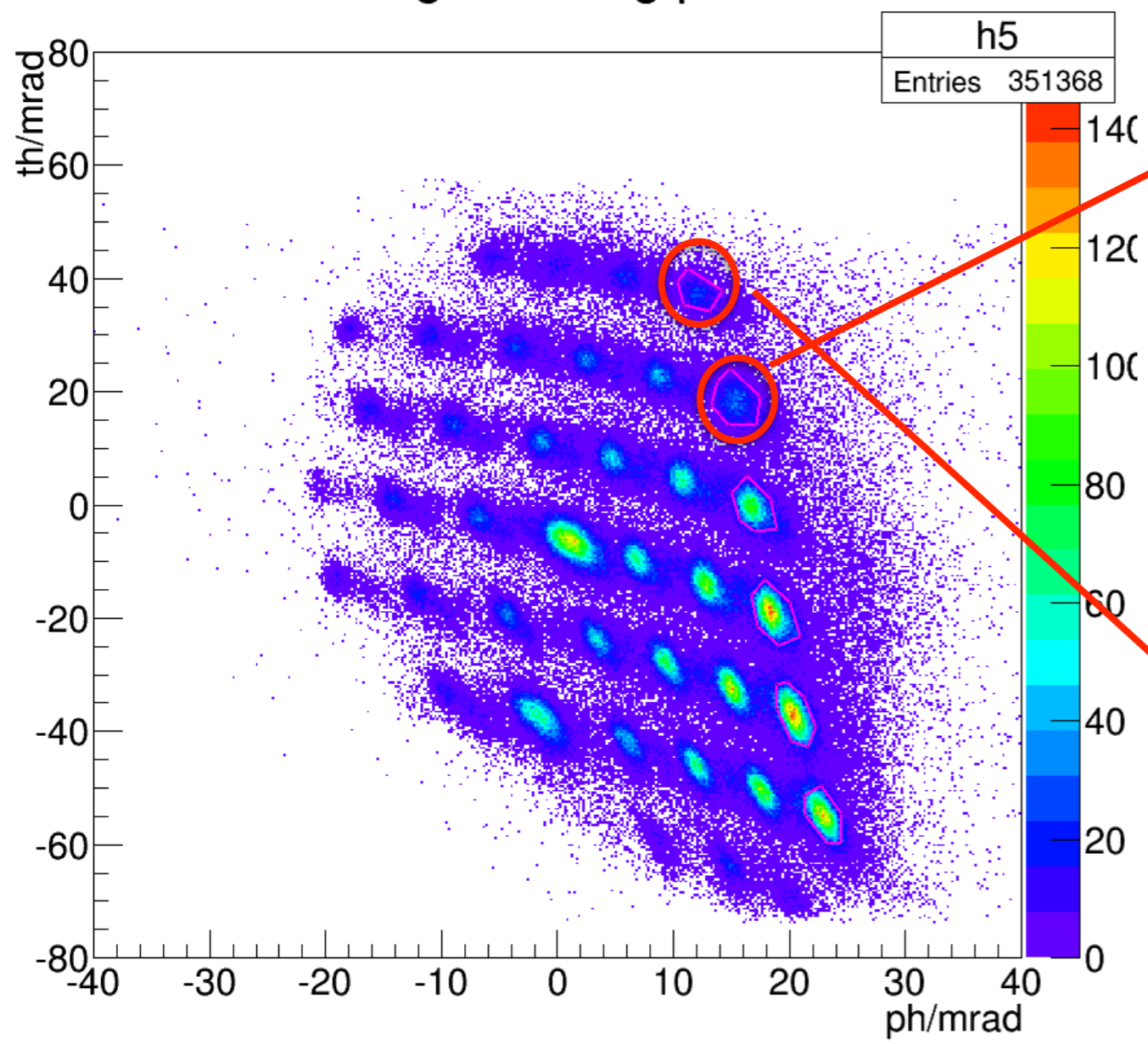
dp in col 7 row 6



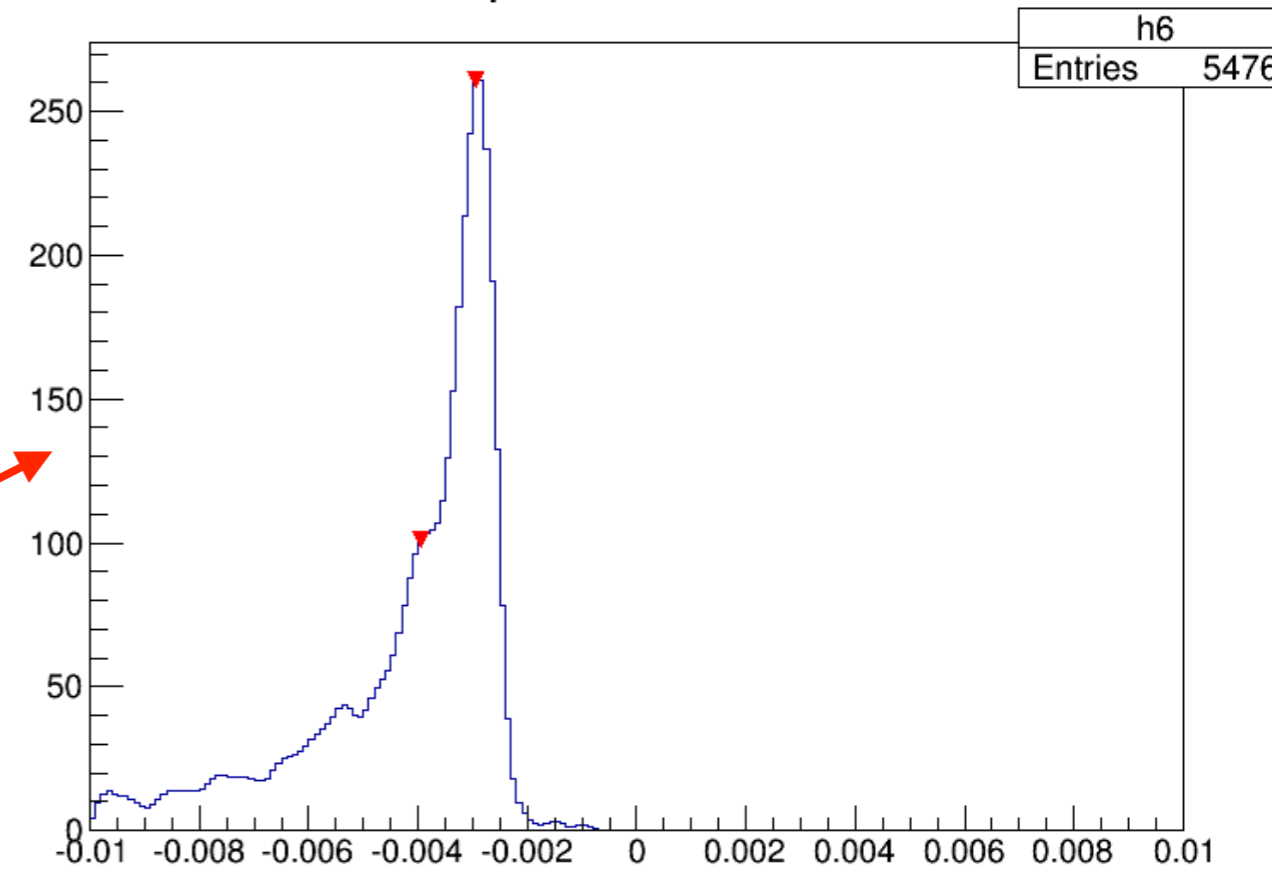
dp in col 7 row 5



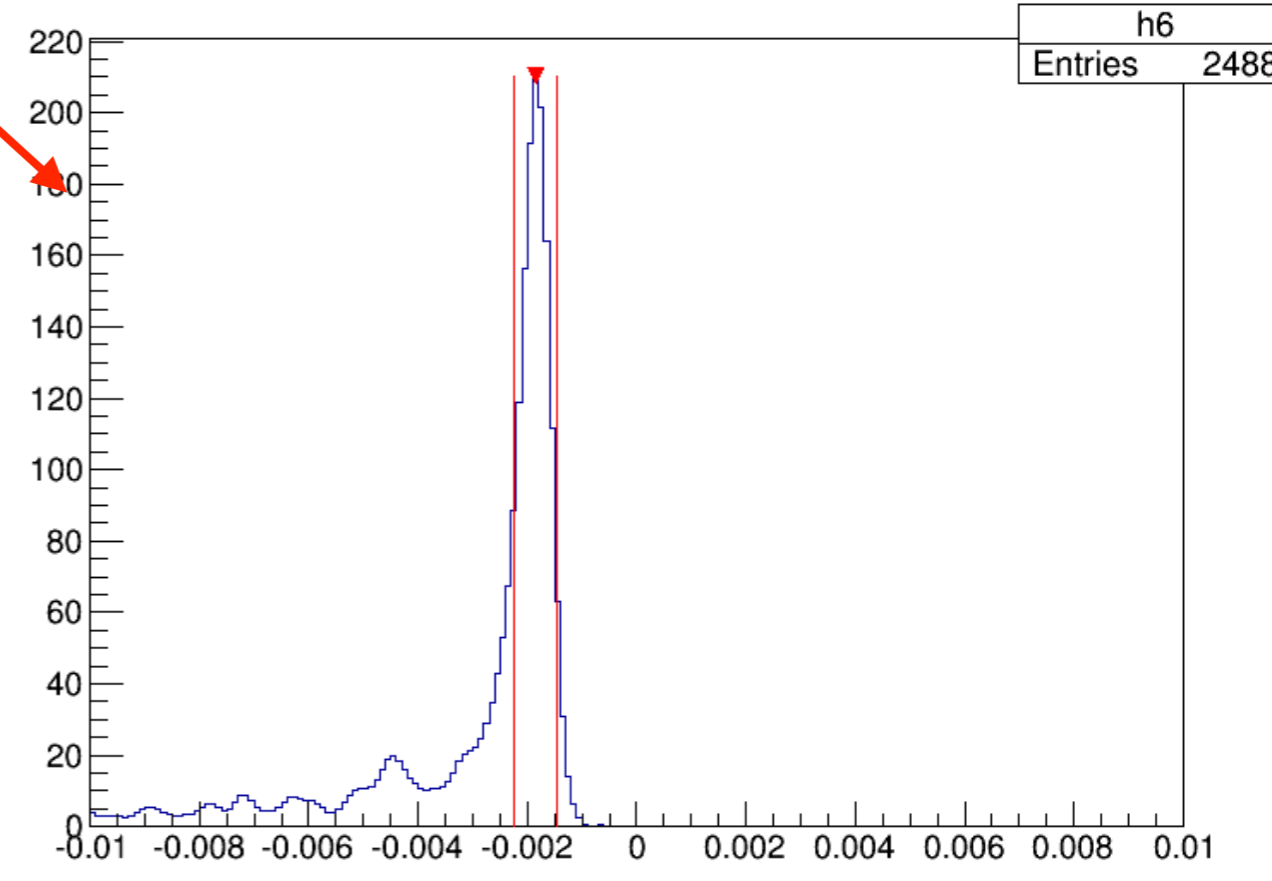
Tg th vs. Tg ph



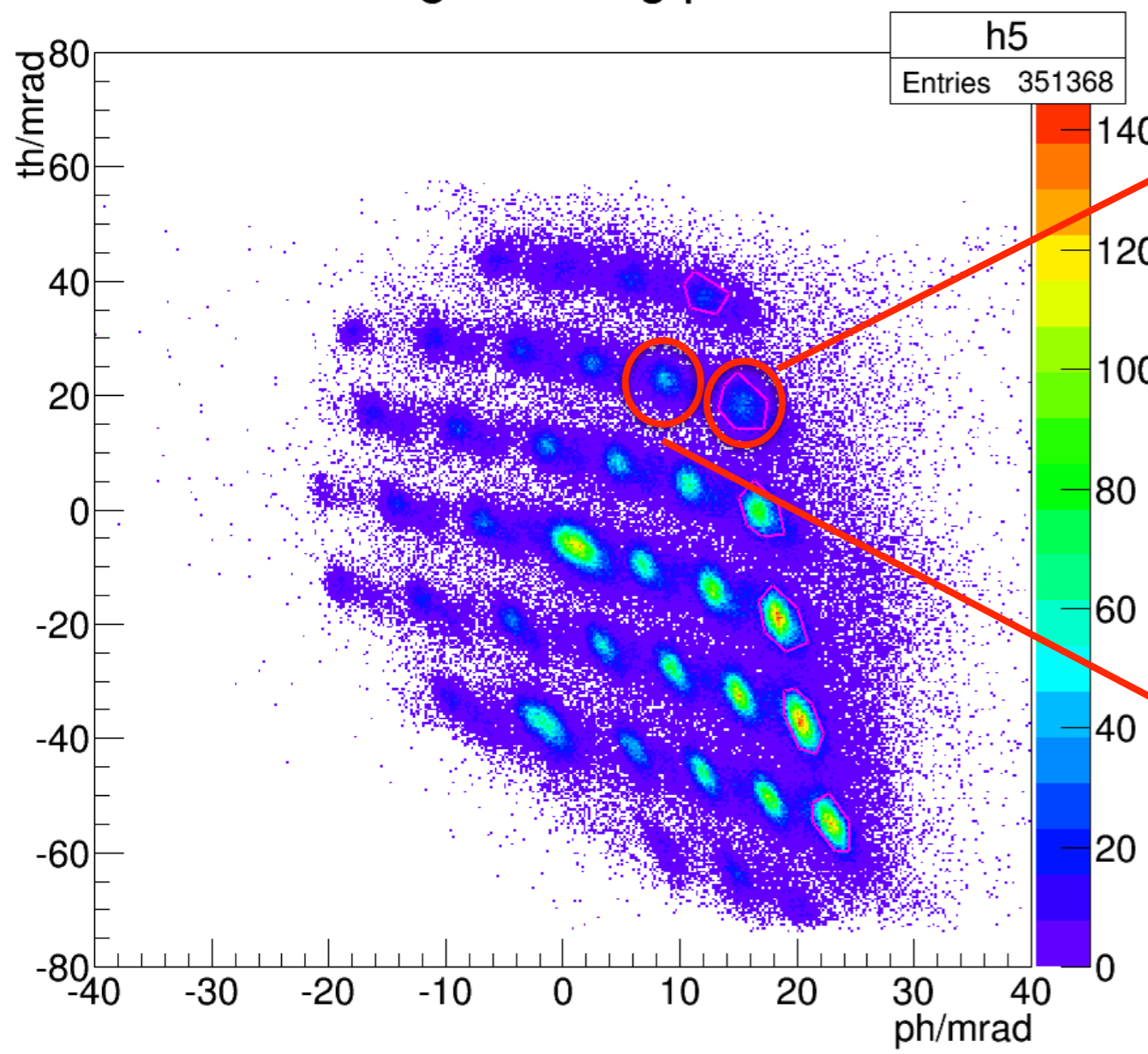
dp in col 7 row 6



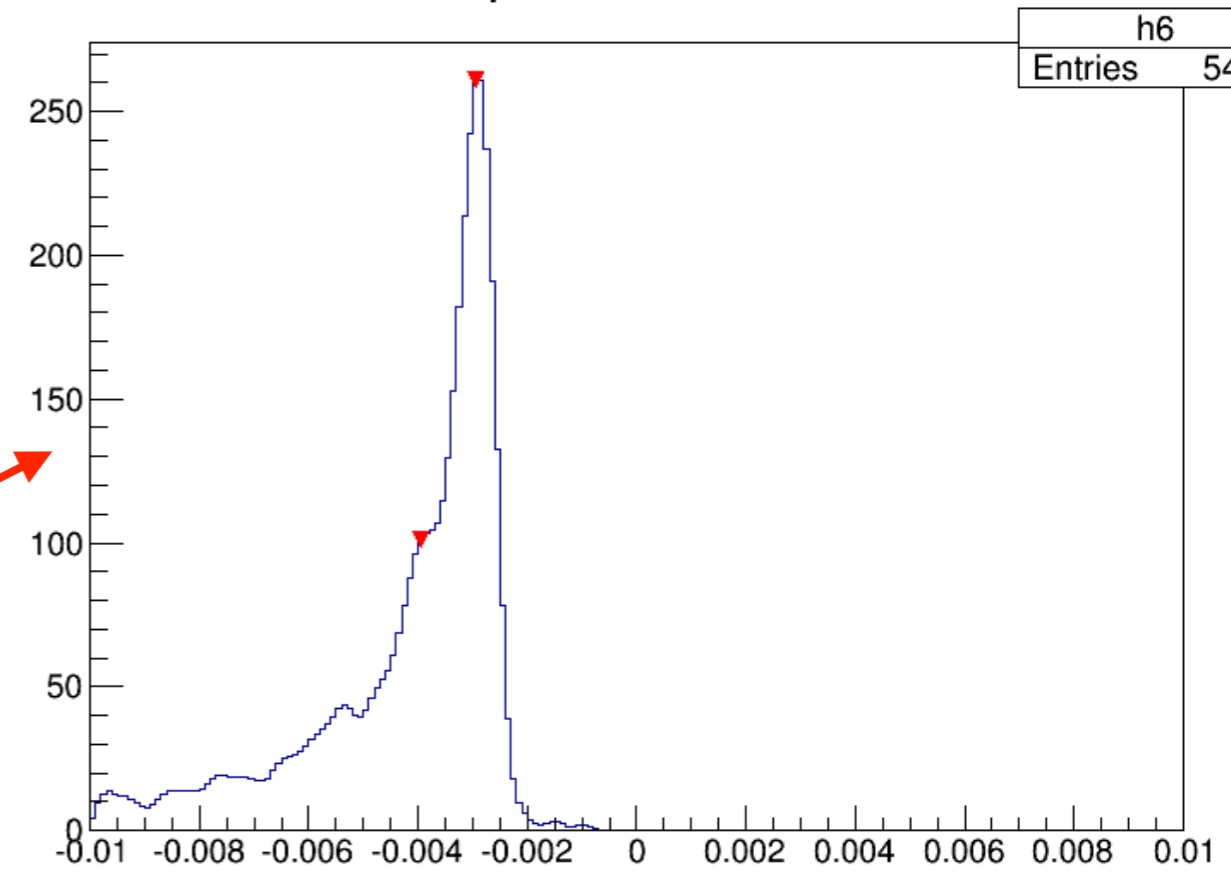
dp in col 7 row 7



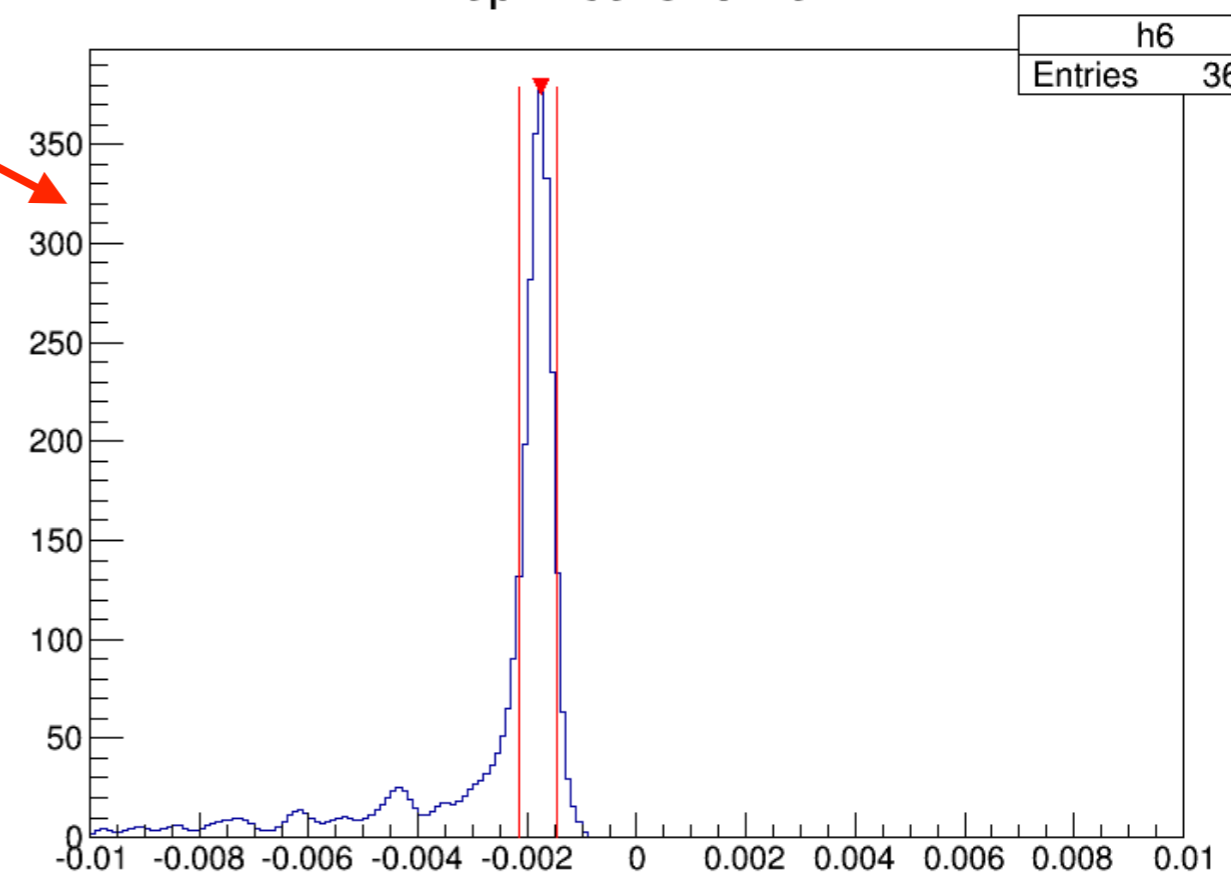
# Tg th vs. Tg ph



## dp in col 7 row 6

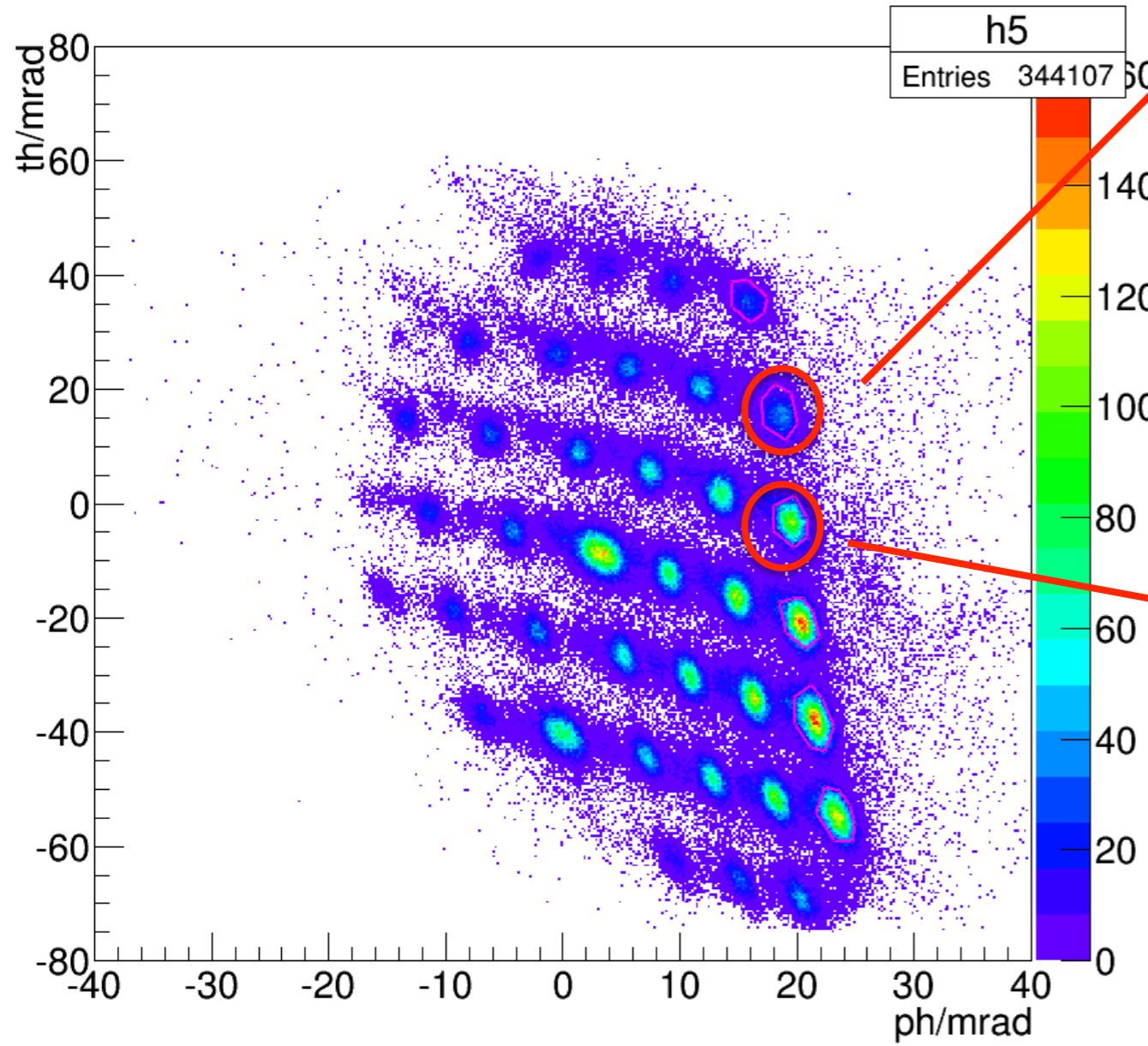


## dp in col 6 row 6

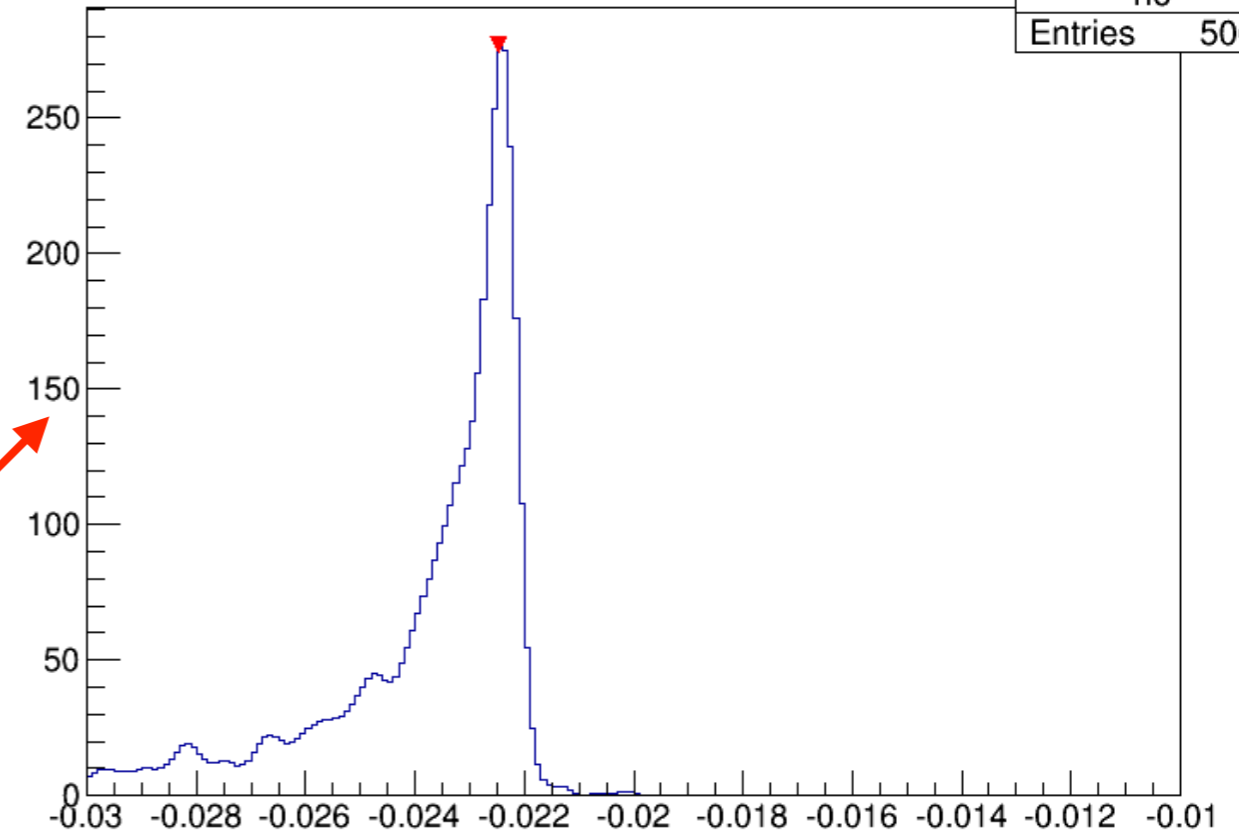


1.7GeV, 2.5T, dp = +3%

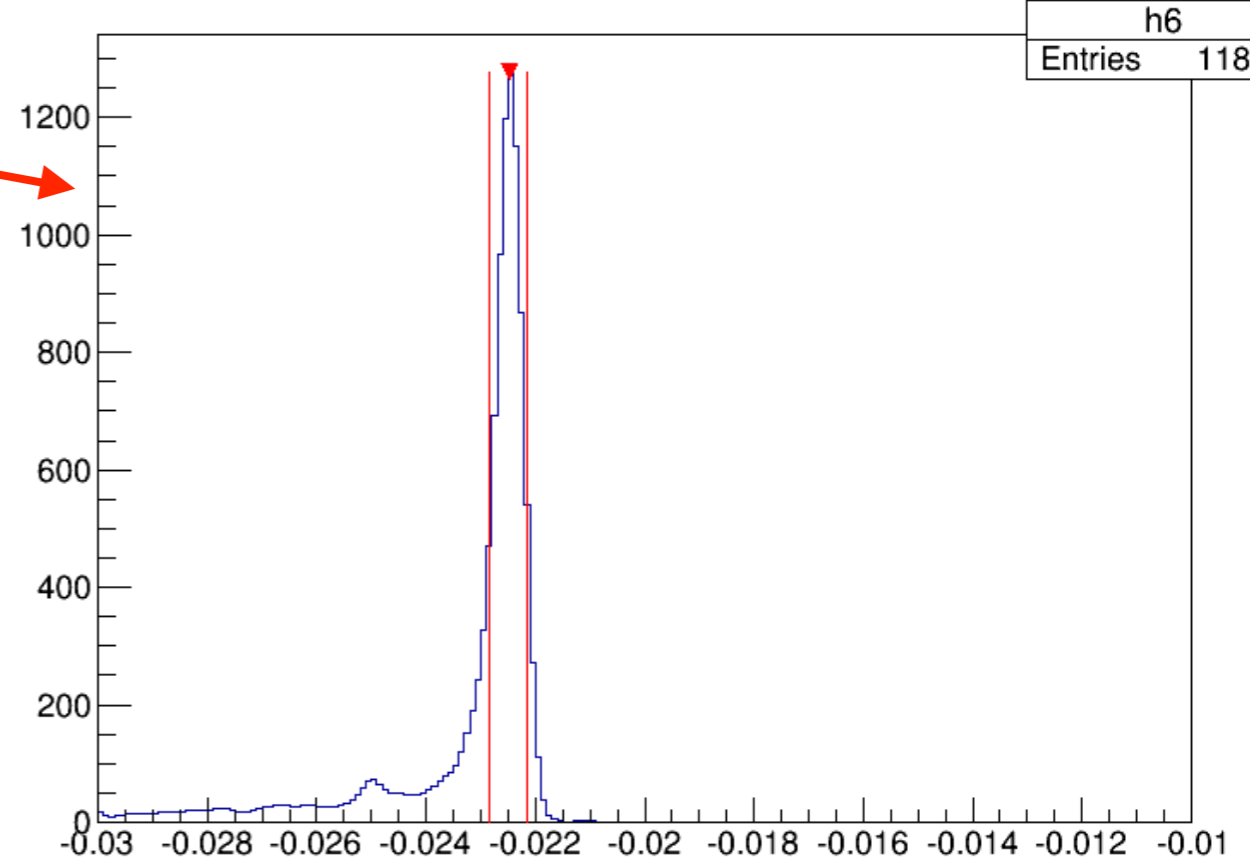
Tg th vs. Tg ph



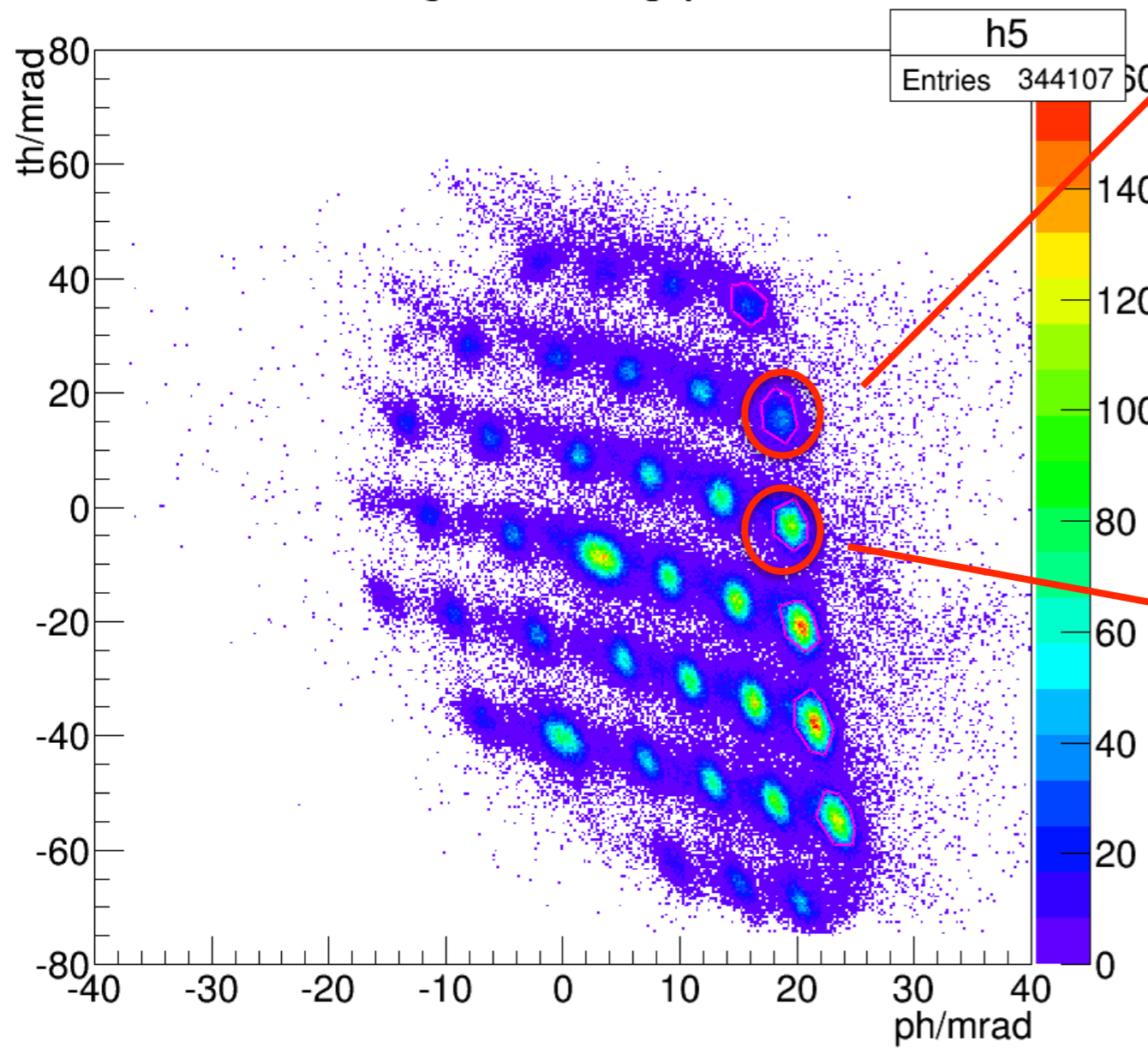
dp in col 7 row 6



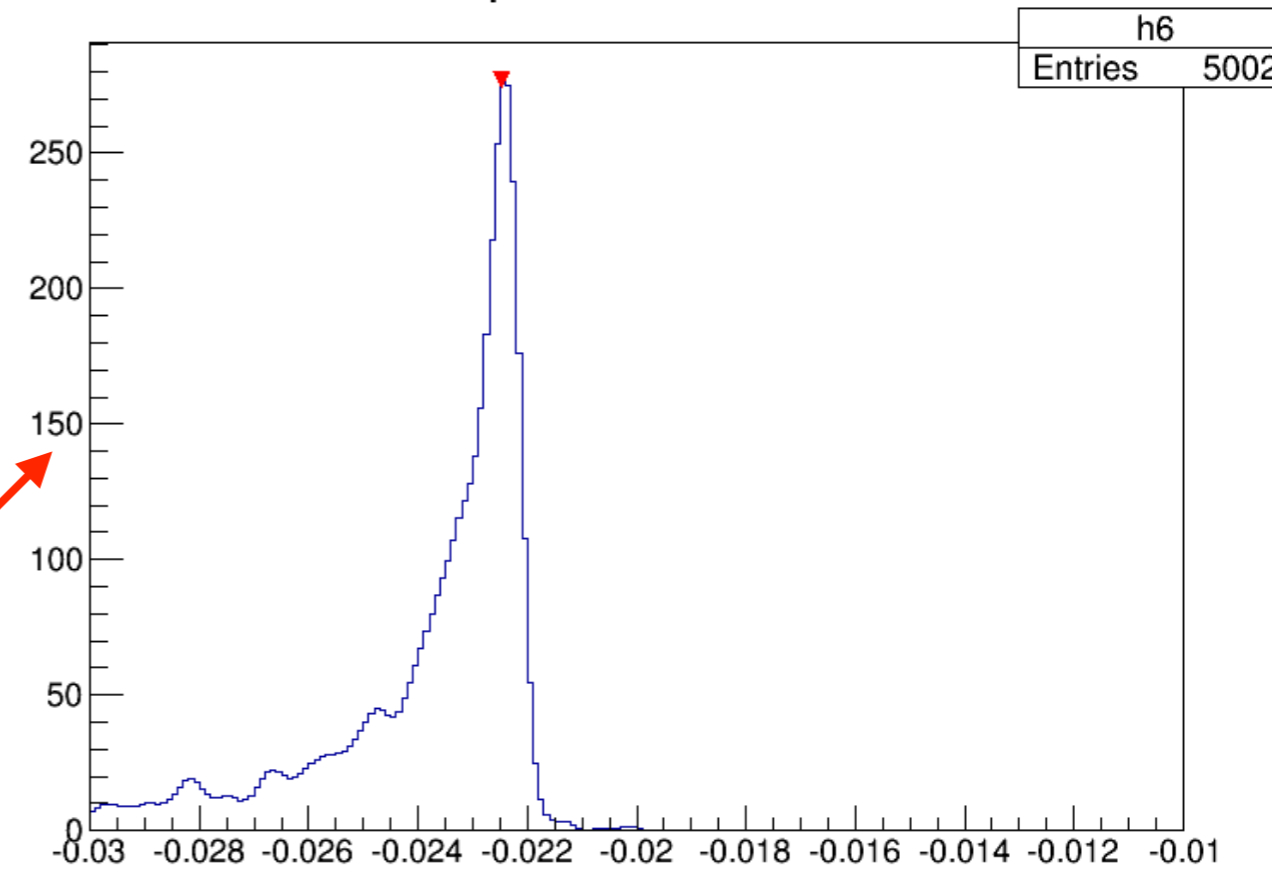
dp in col 7 row 5



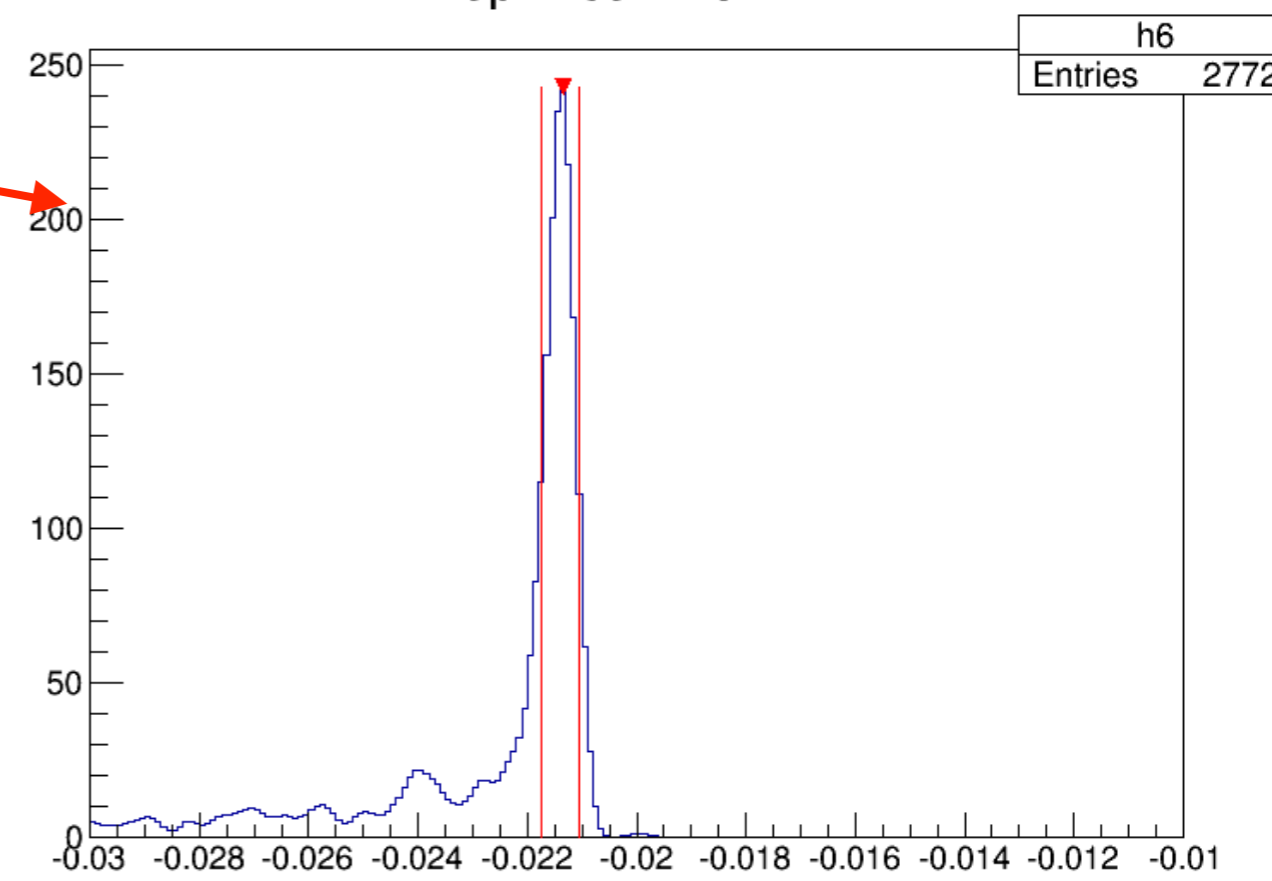
Tg th vs. Tg ph



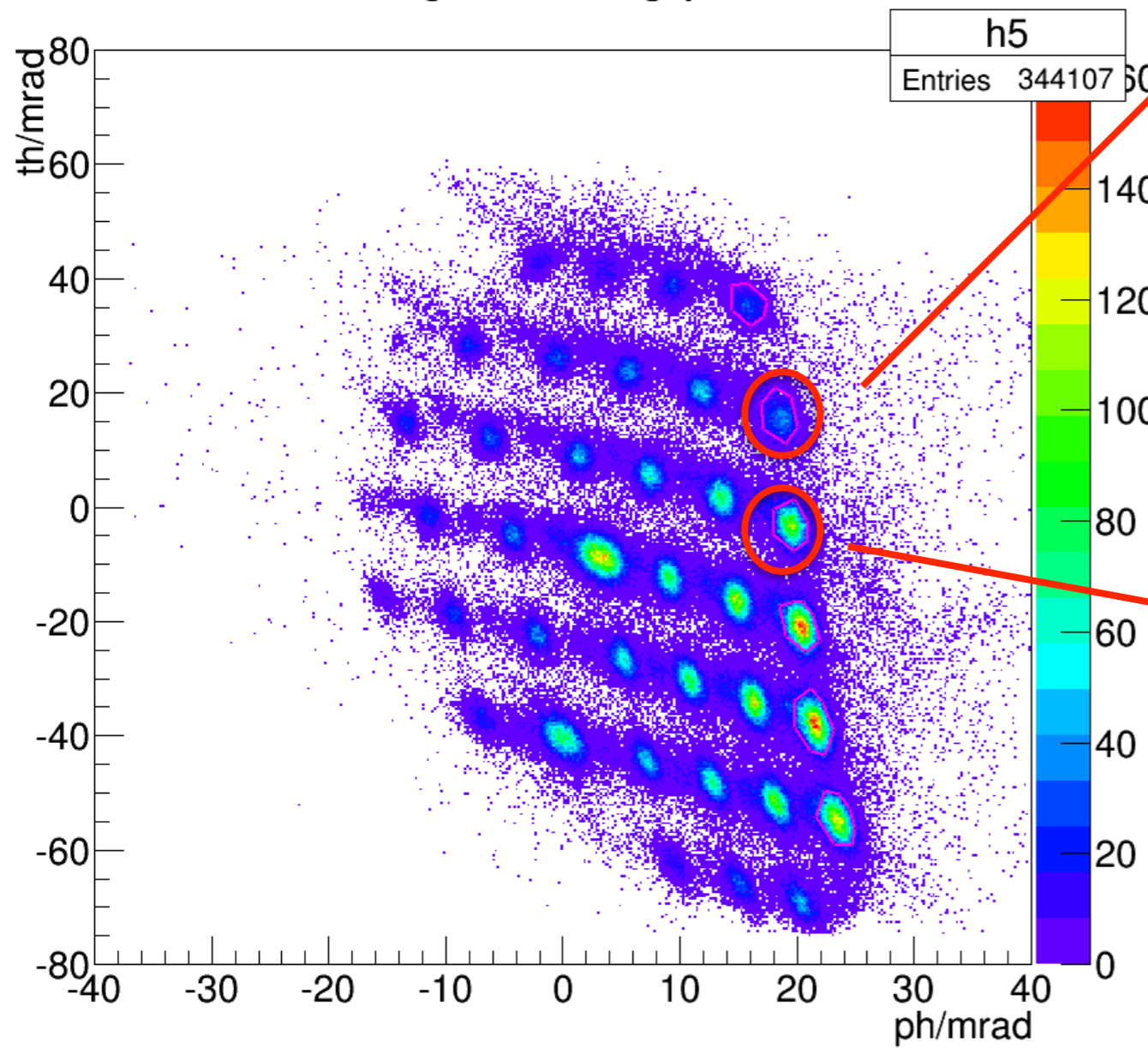
dp in col 7 row 6



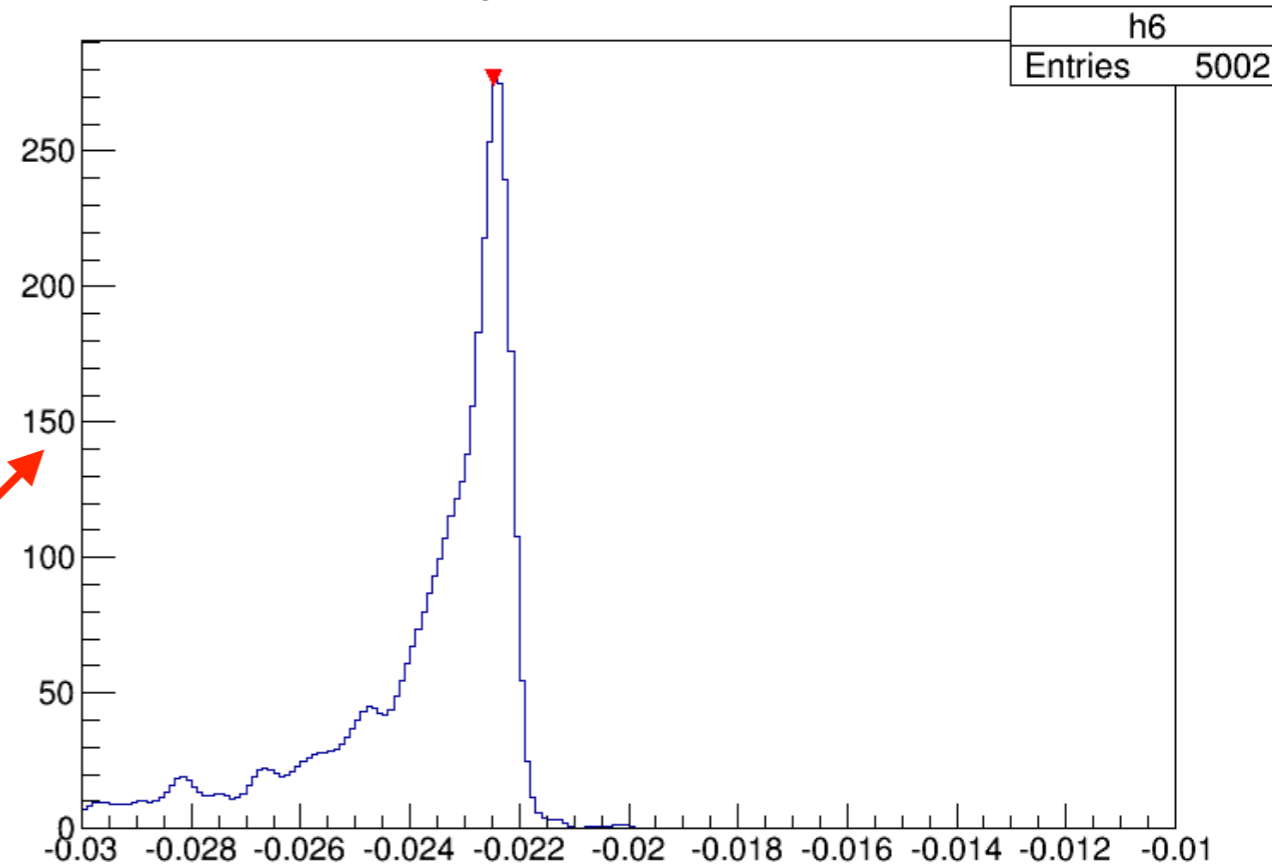
dp in col 7 row 7



Tg th vs. Tg ph



dp in col 7 row 6



dp in col 6 row 6

