

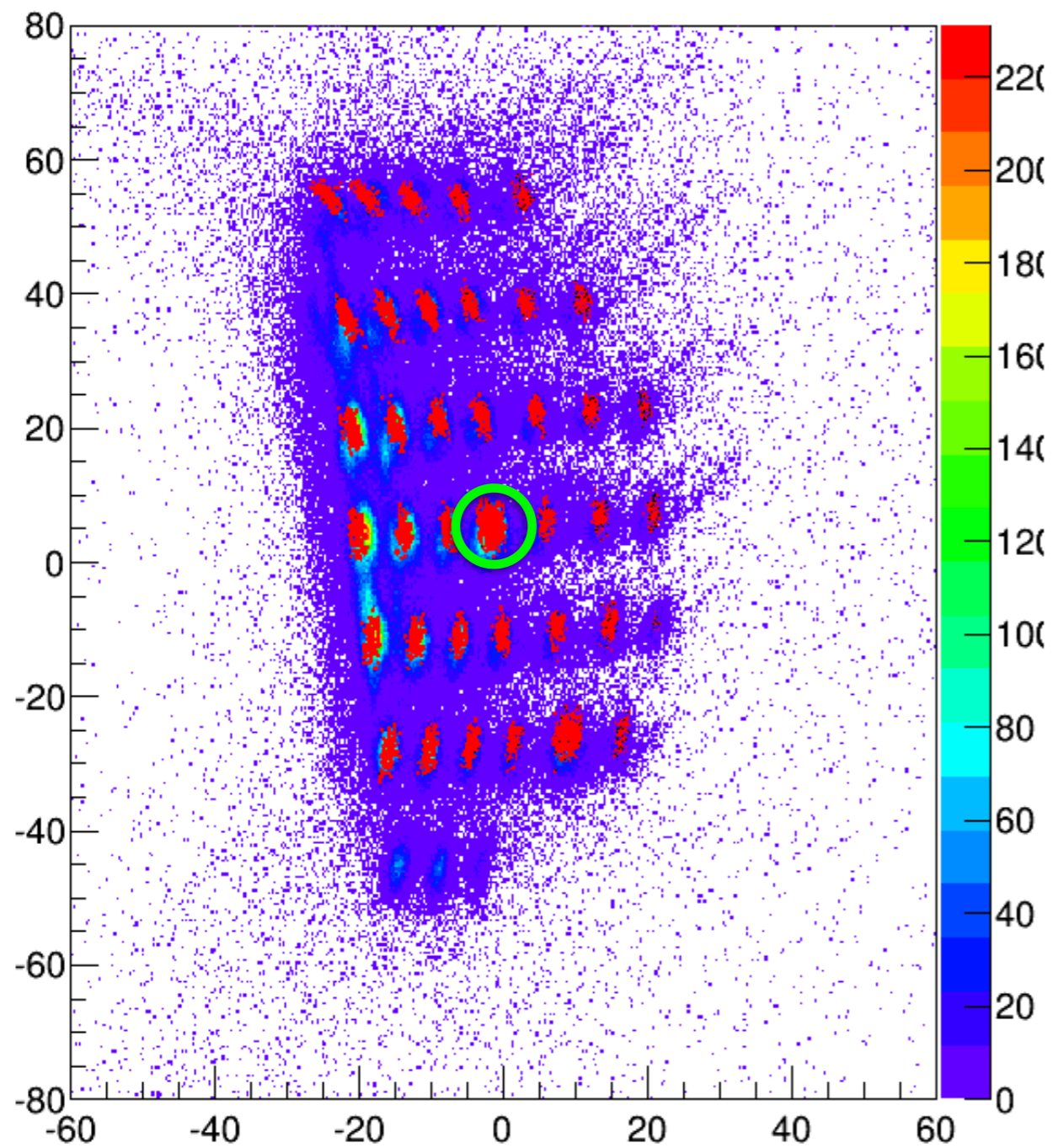
# Optics Status Update

Chao Gu

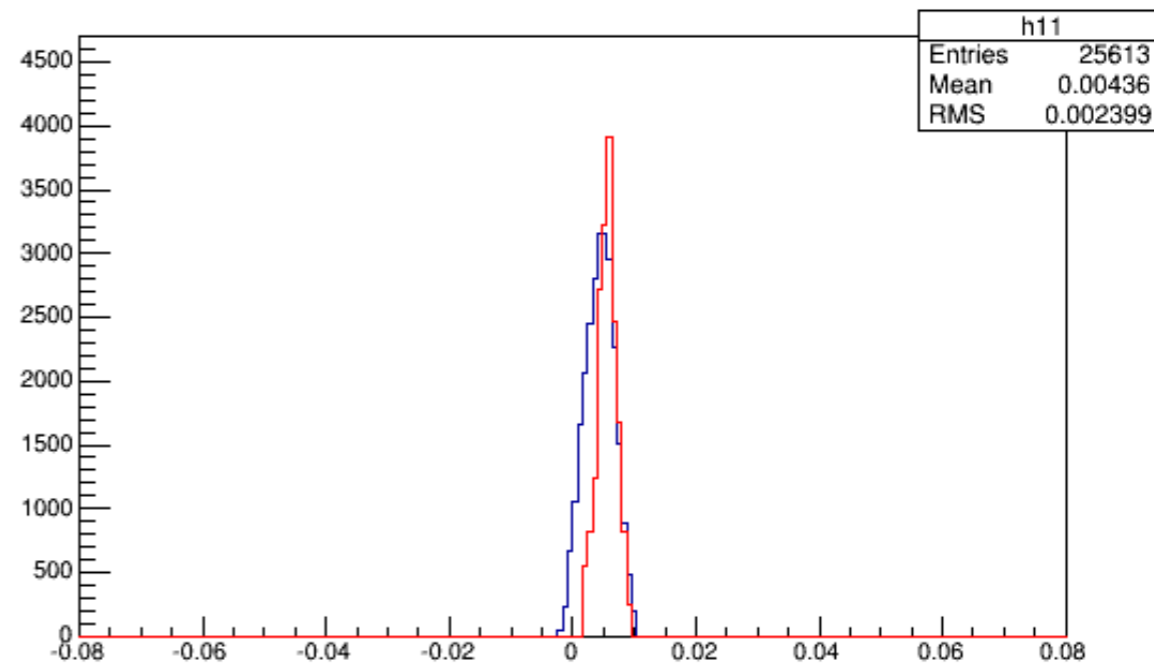
# Simulation vs Data

- Compare the data with simulation
  - Use optics data
  - Compare each sieve holes

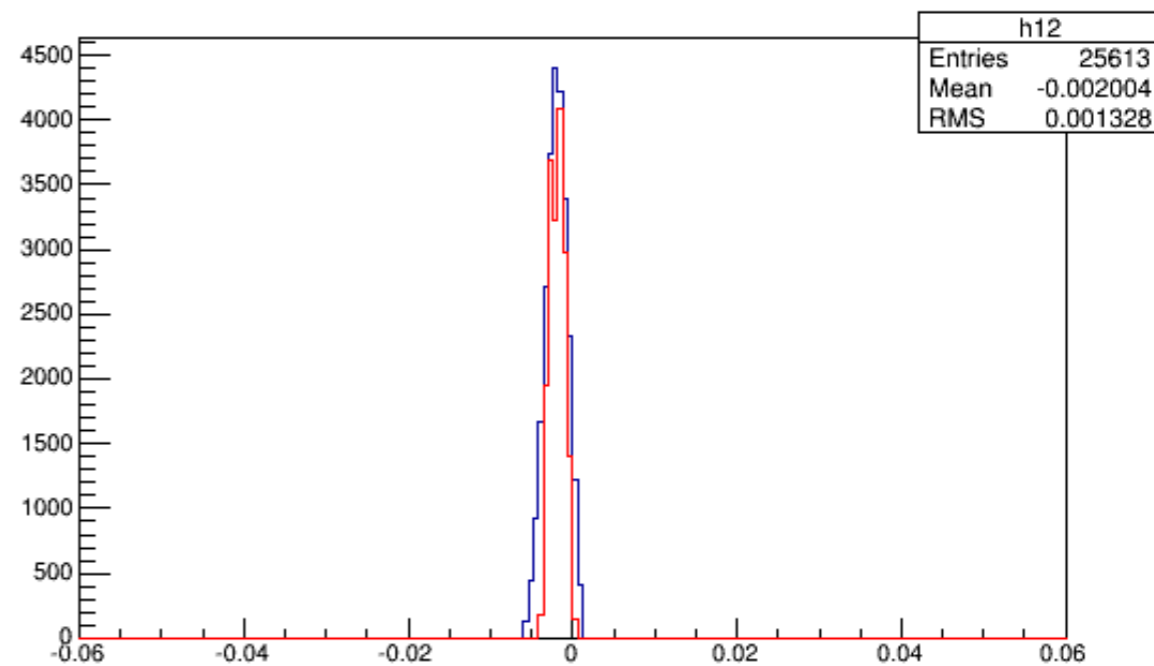
### Theta vs Phi



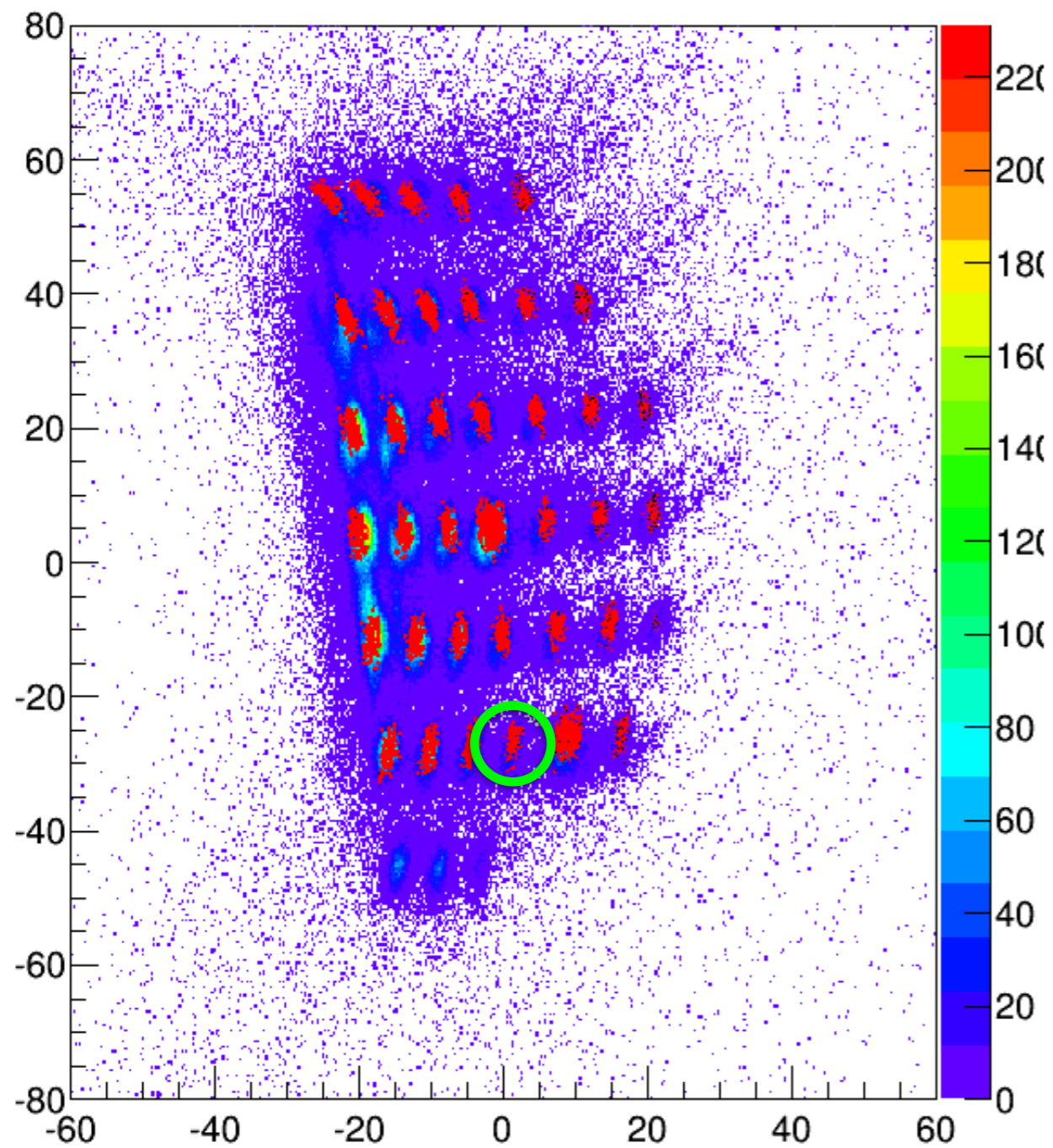
### Theta



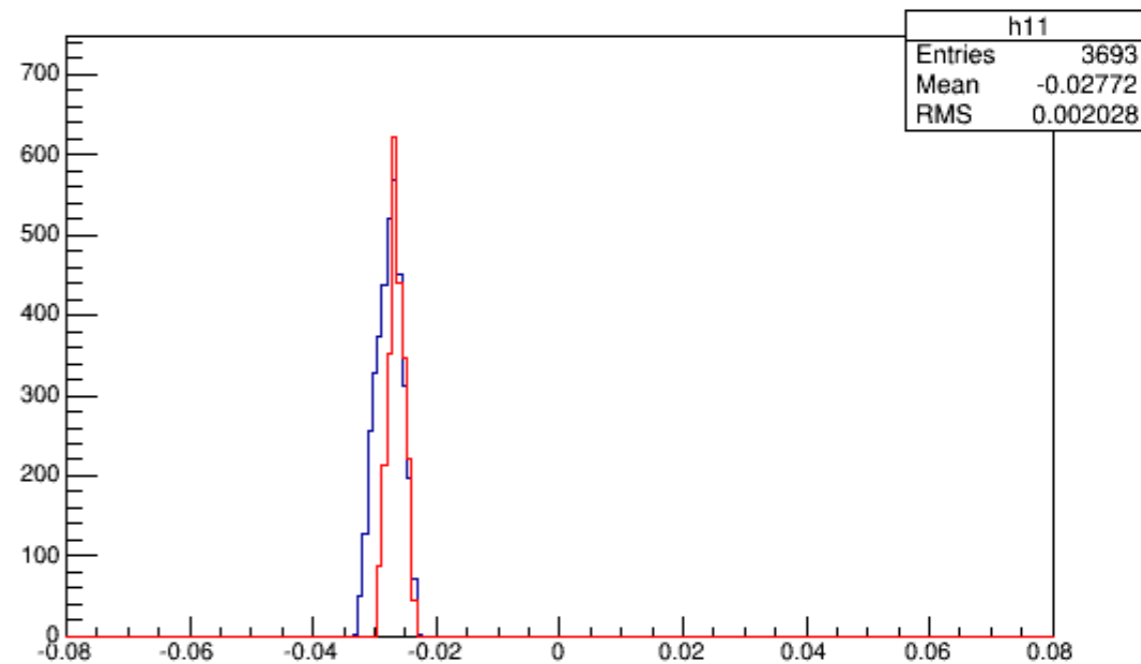
### Phi



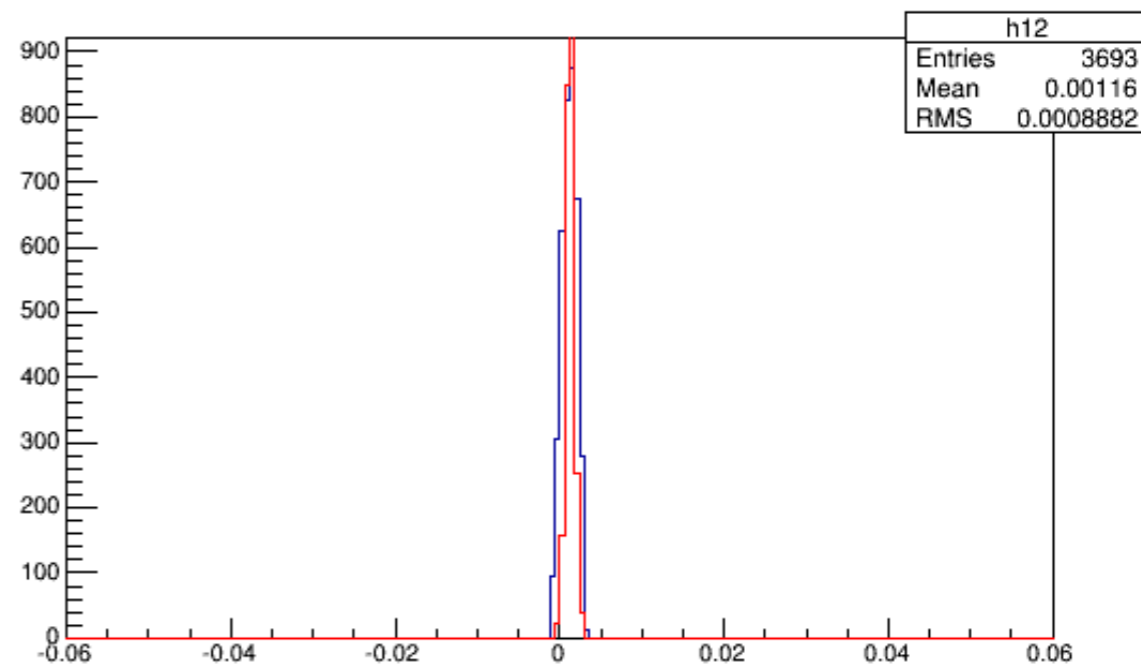
# Theta vs Phi



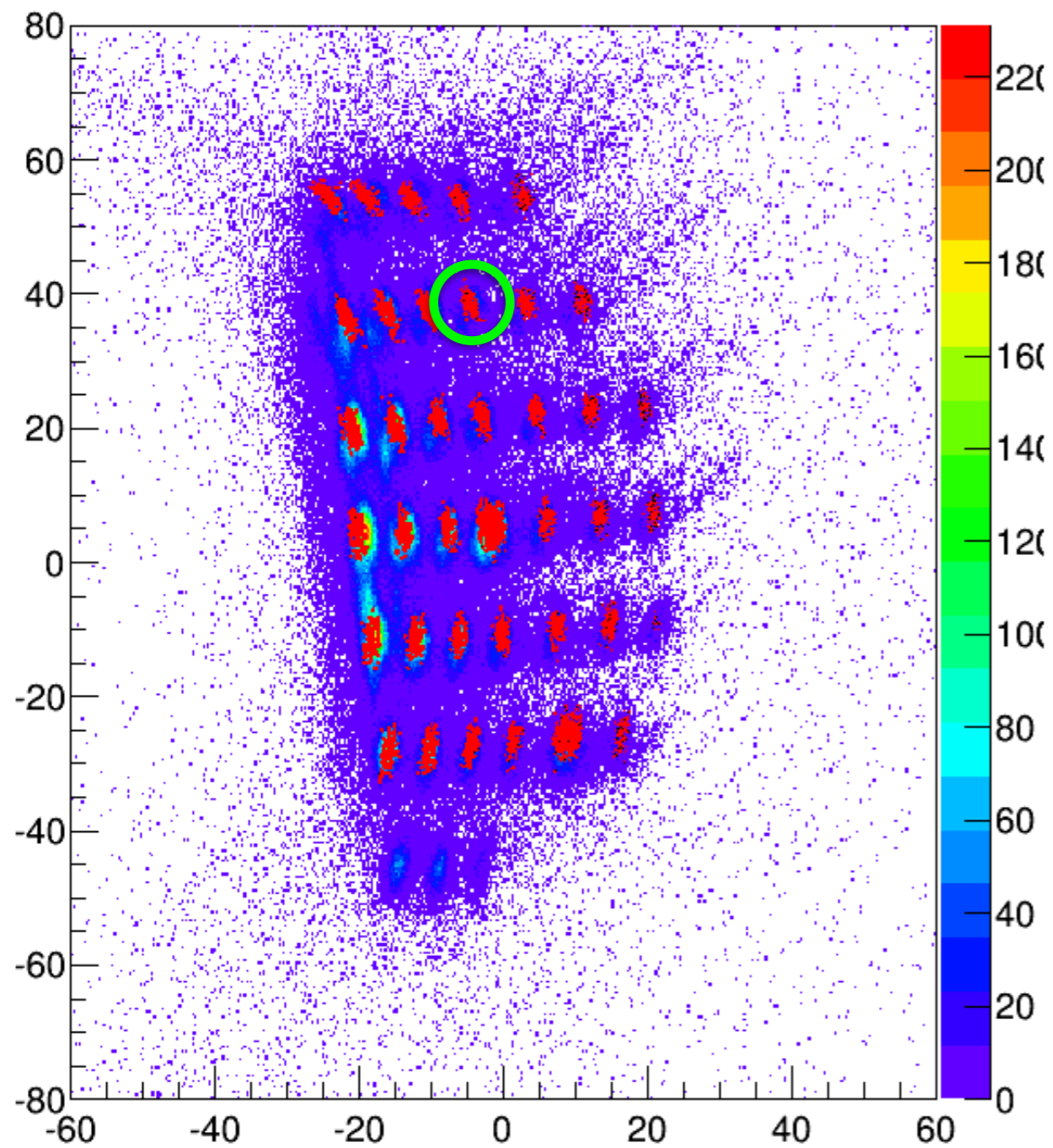
## Theta



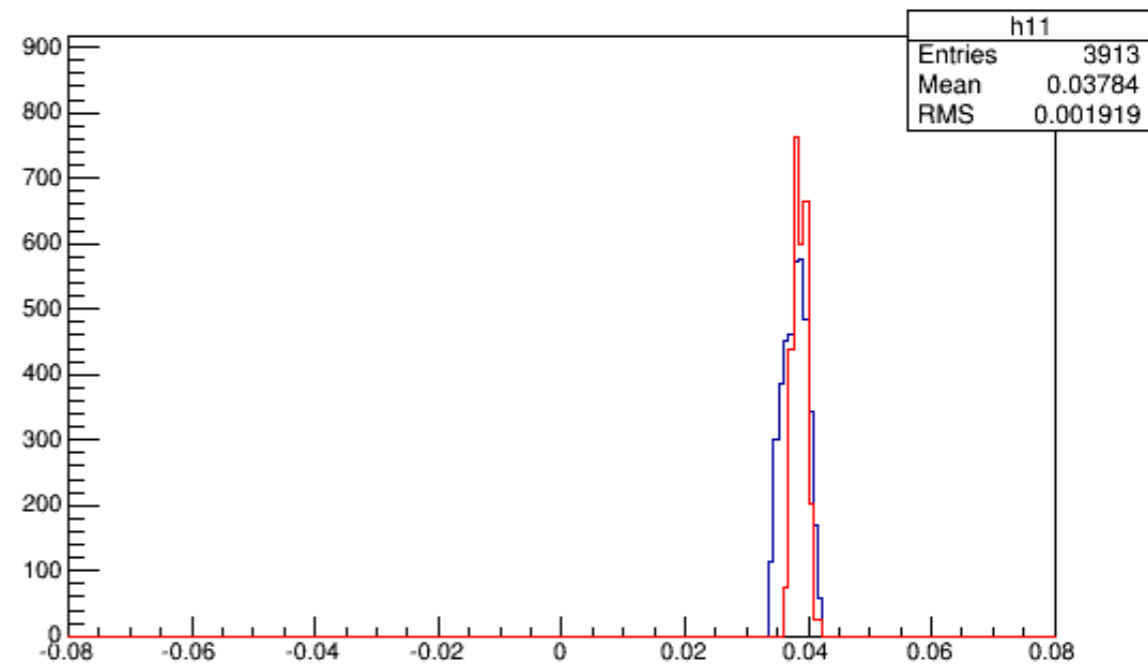
## Phi



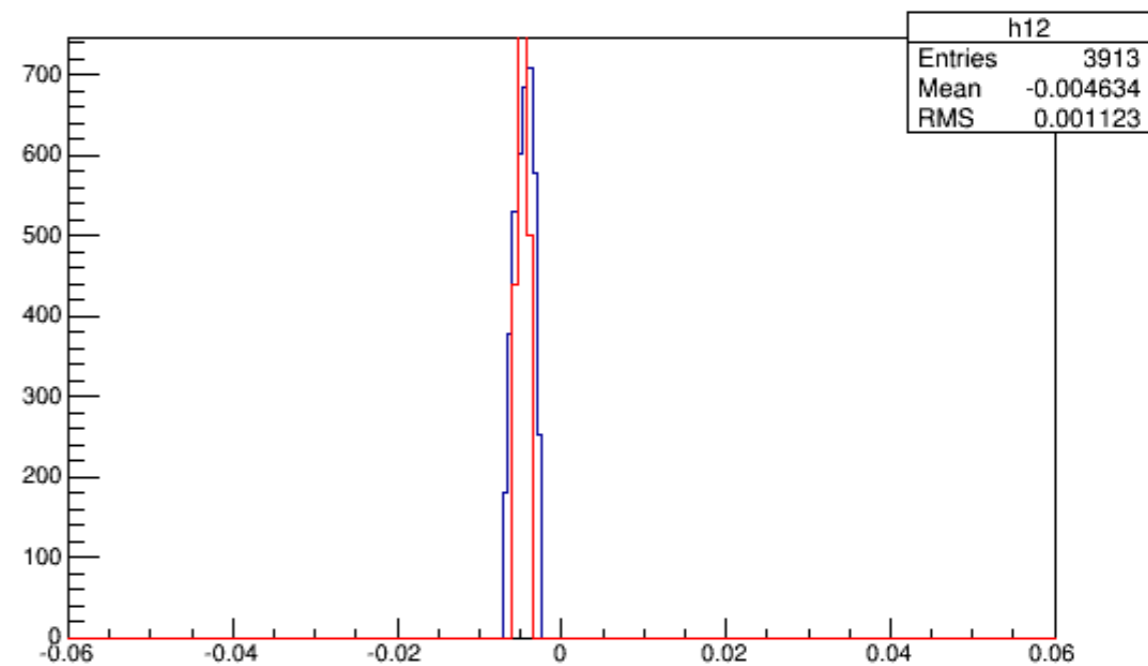
### Theta vs Phi



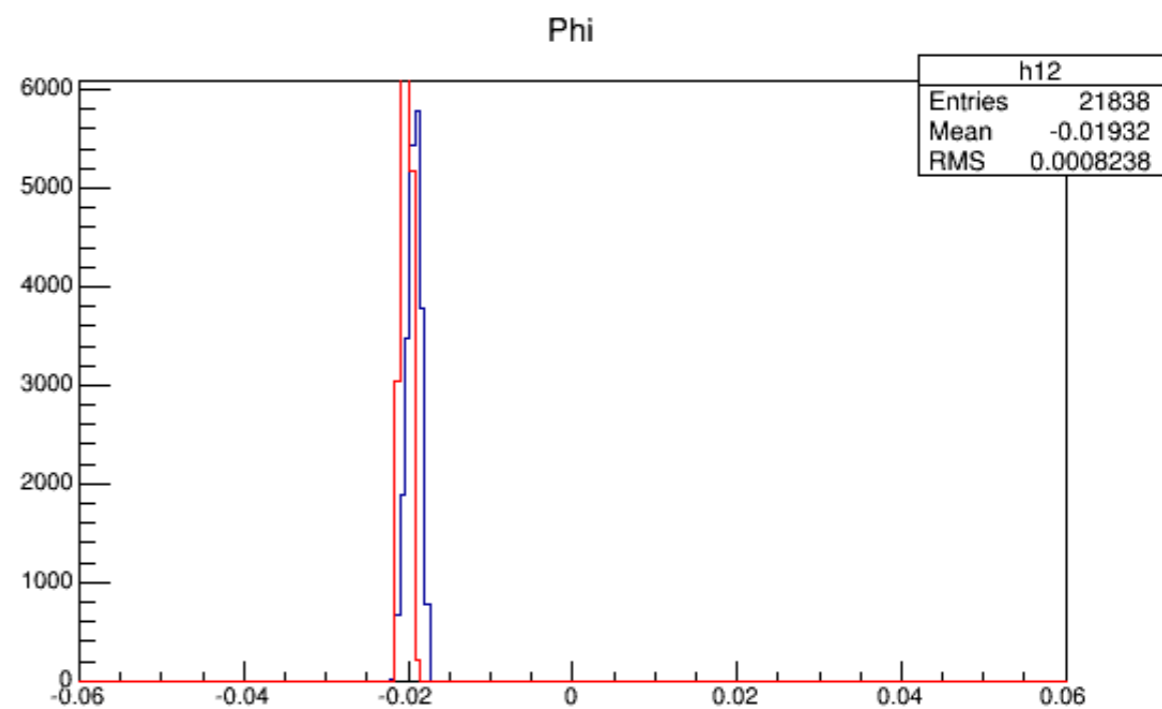
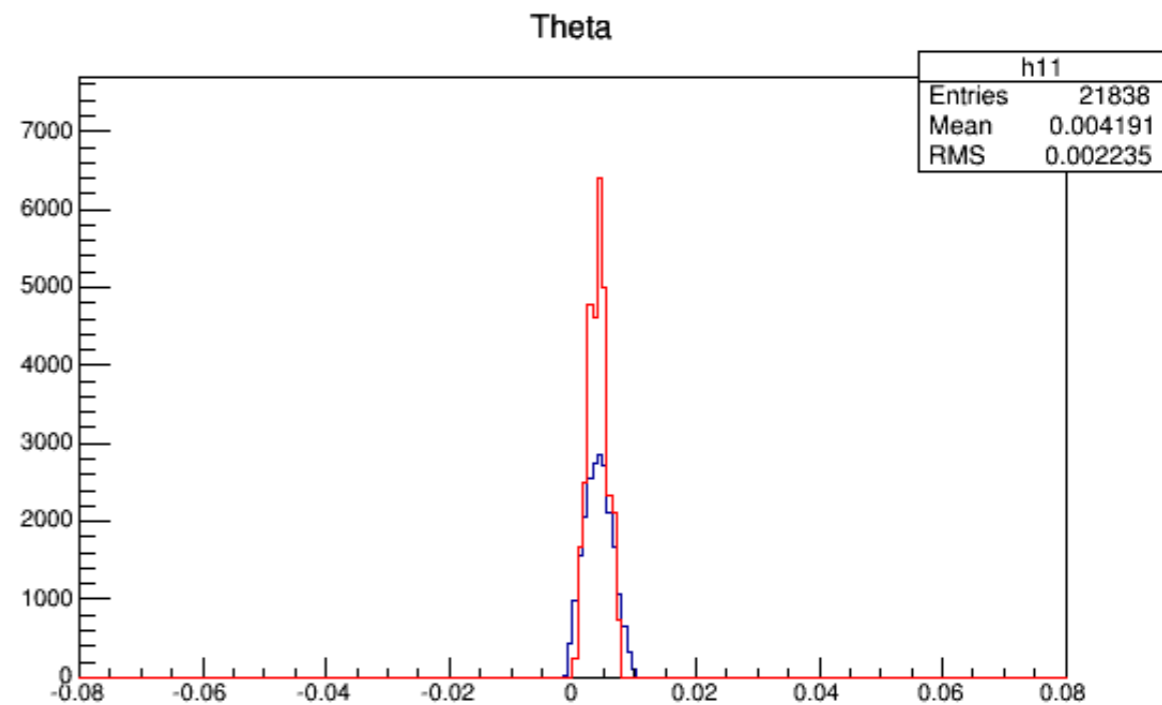
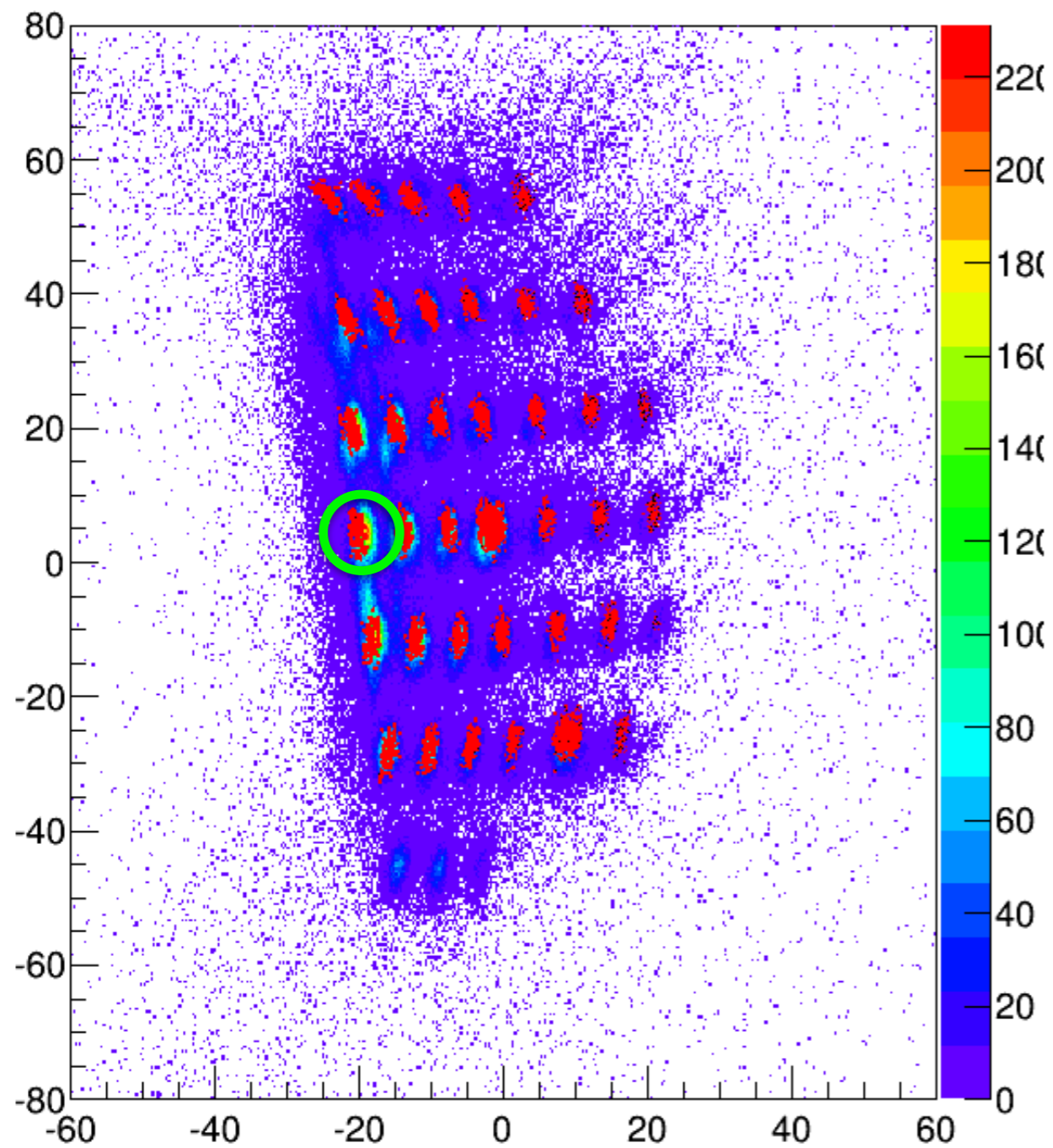
### Theta



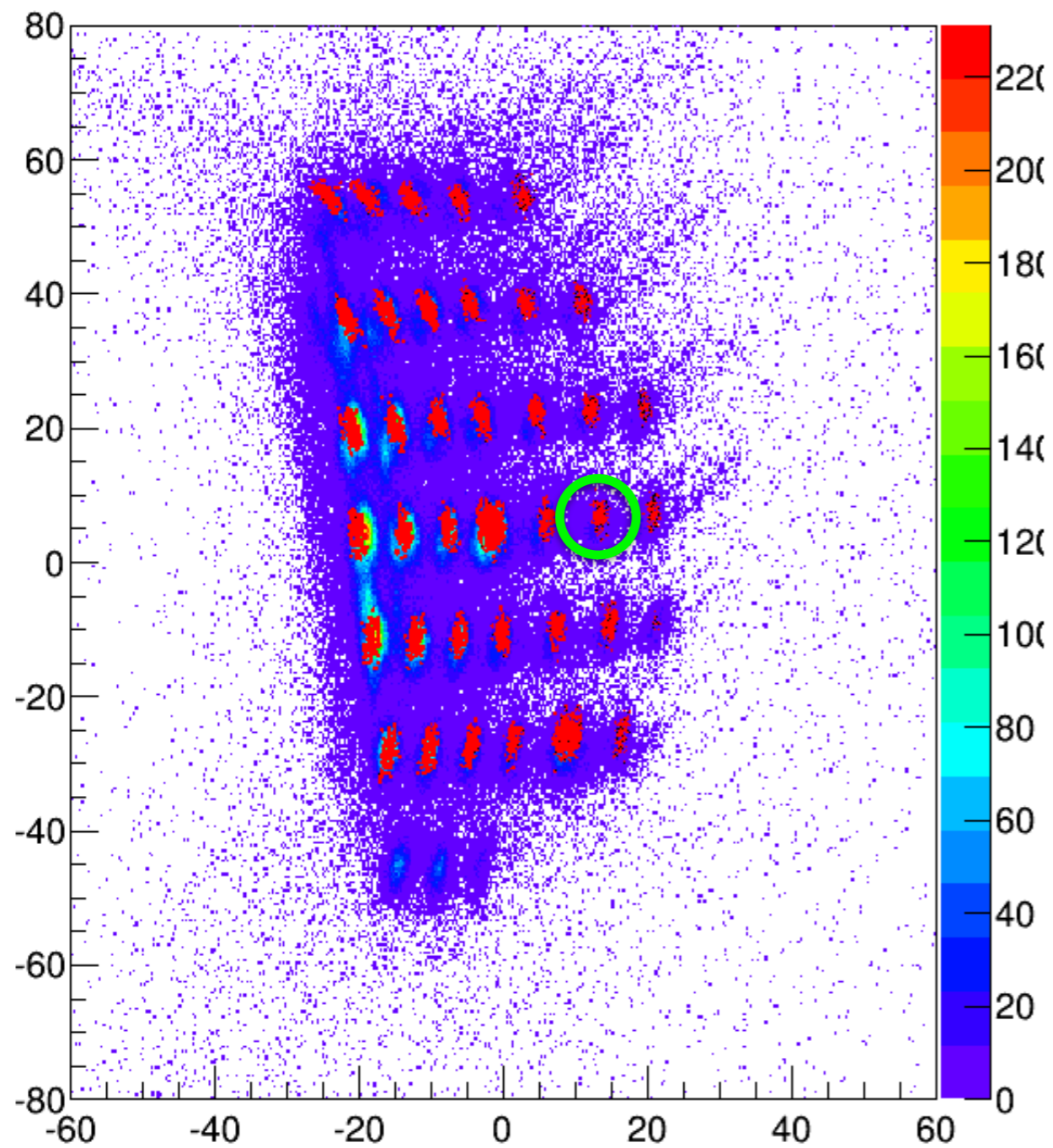
### Phi



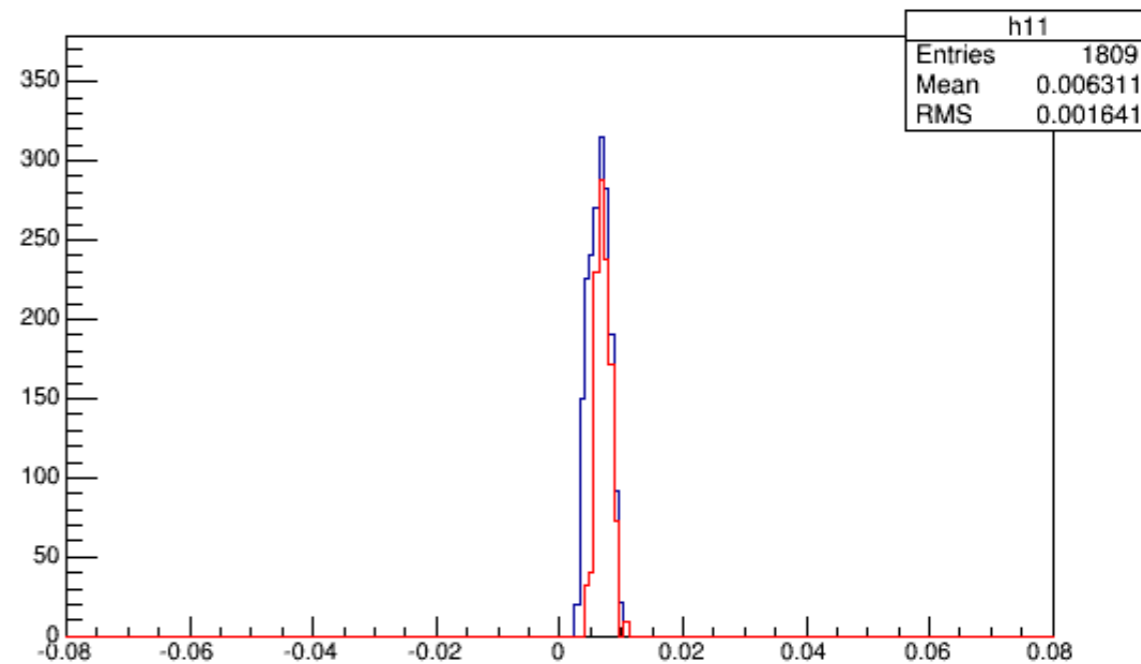
# Theta vs Phi



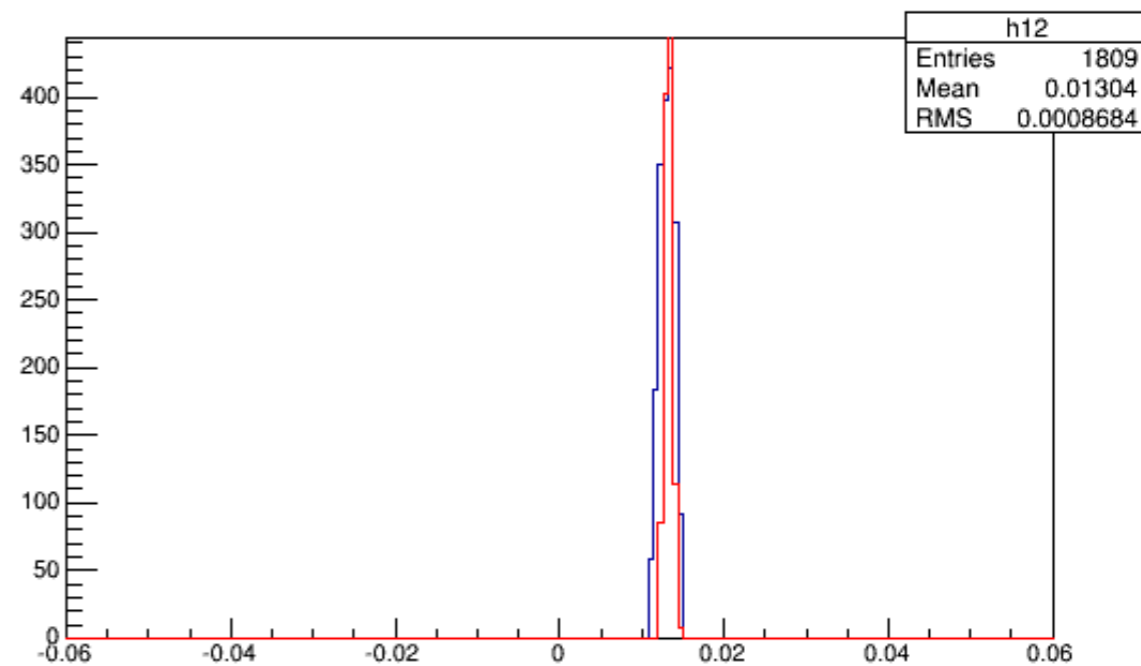
# Theta vs Phi



## Theta



## Phi



# Simulation vs Data

- The difference is less than 1 mrad for the holes on the edge
- May cause by the background, still need to clean the data more carefully (on-going)