

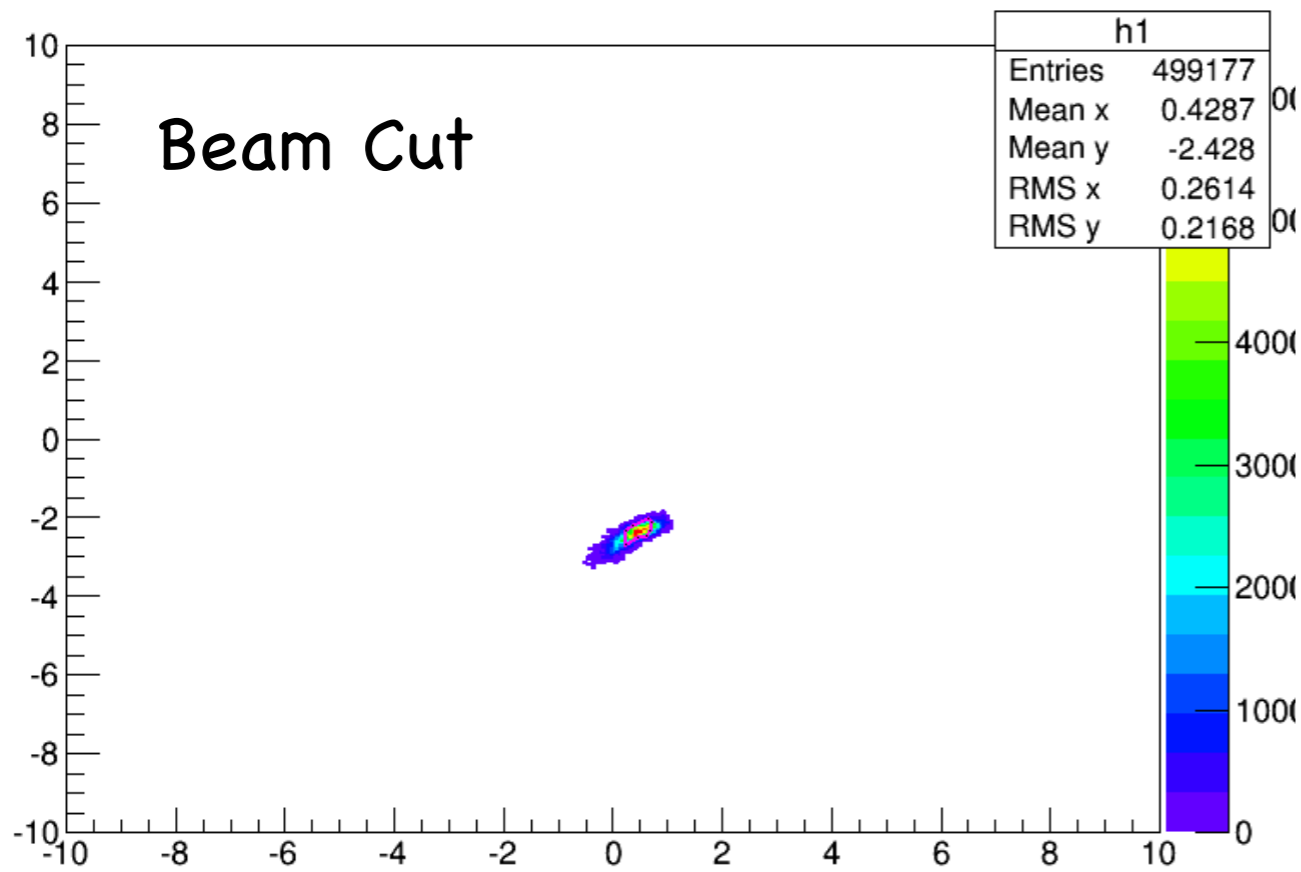
Optics Status Update

Chao Gu

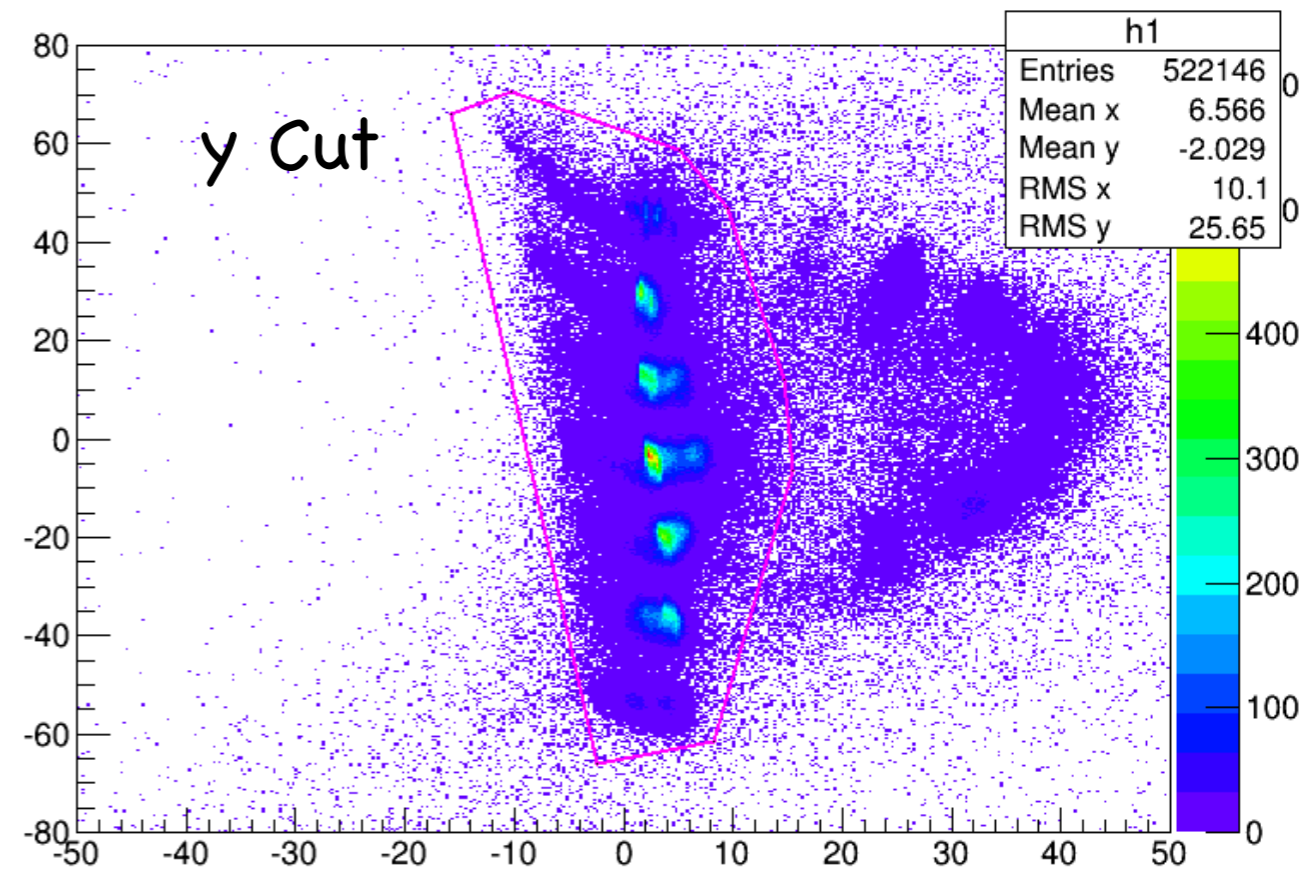
Simulation vs Data

- Compare the data with simulation
 - Use optics data
 - Compare each sieve holes
 - Beam cut, y cut and dp cut

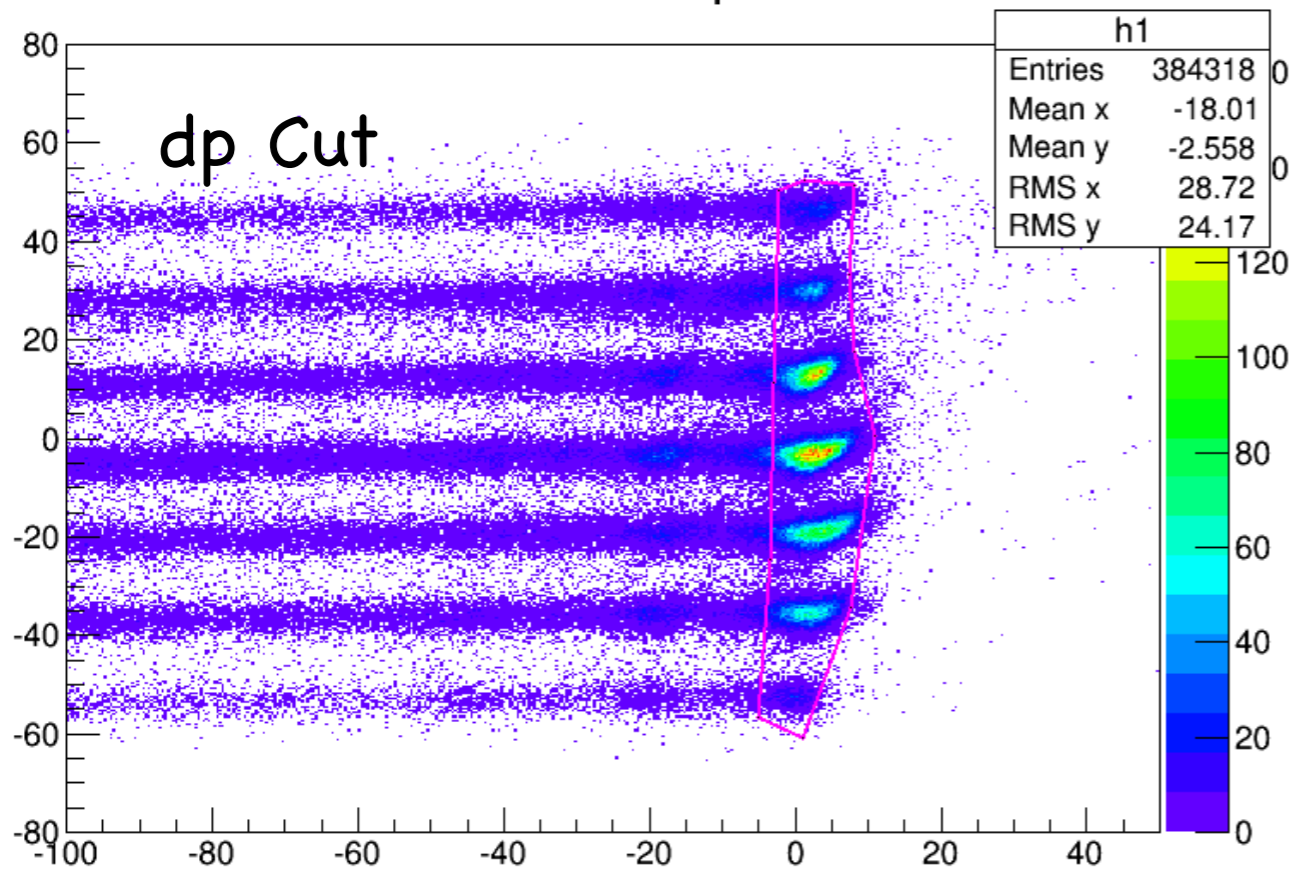
Y vs X



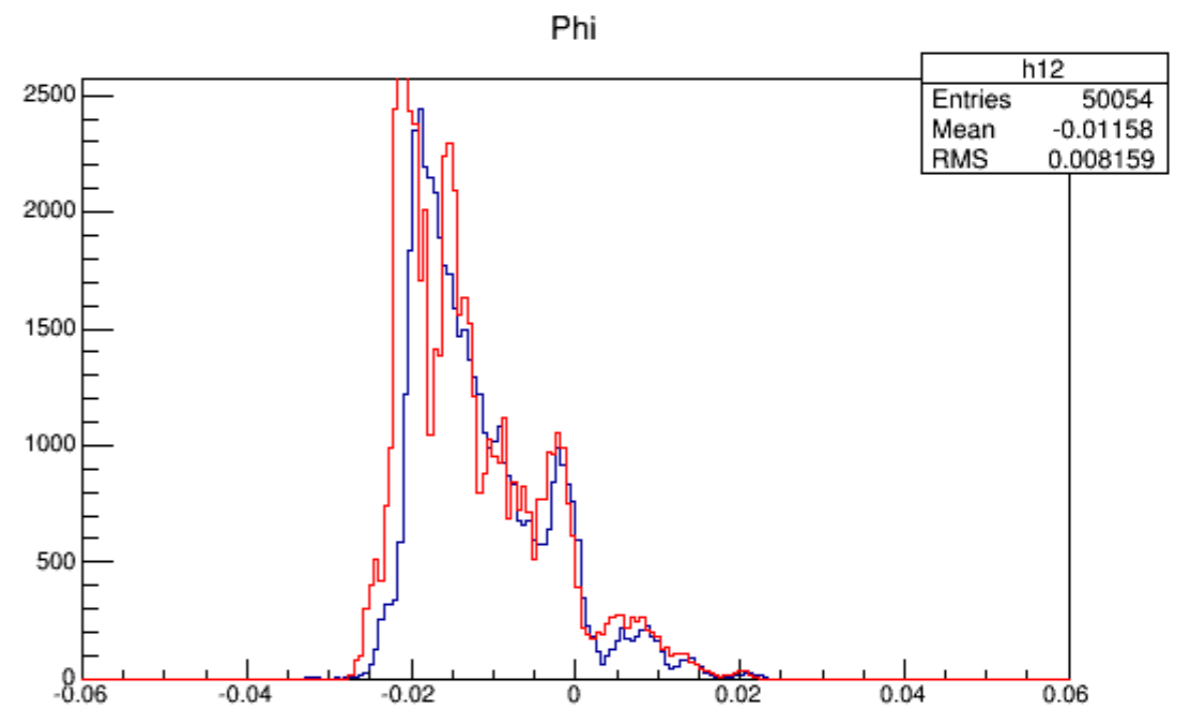
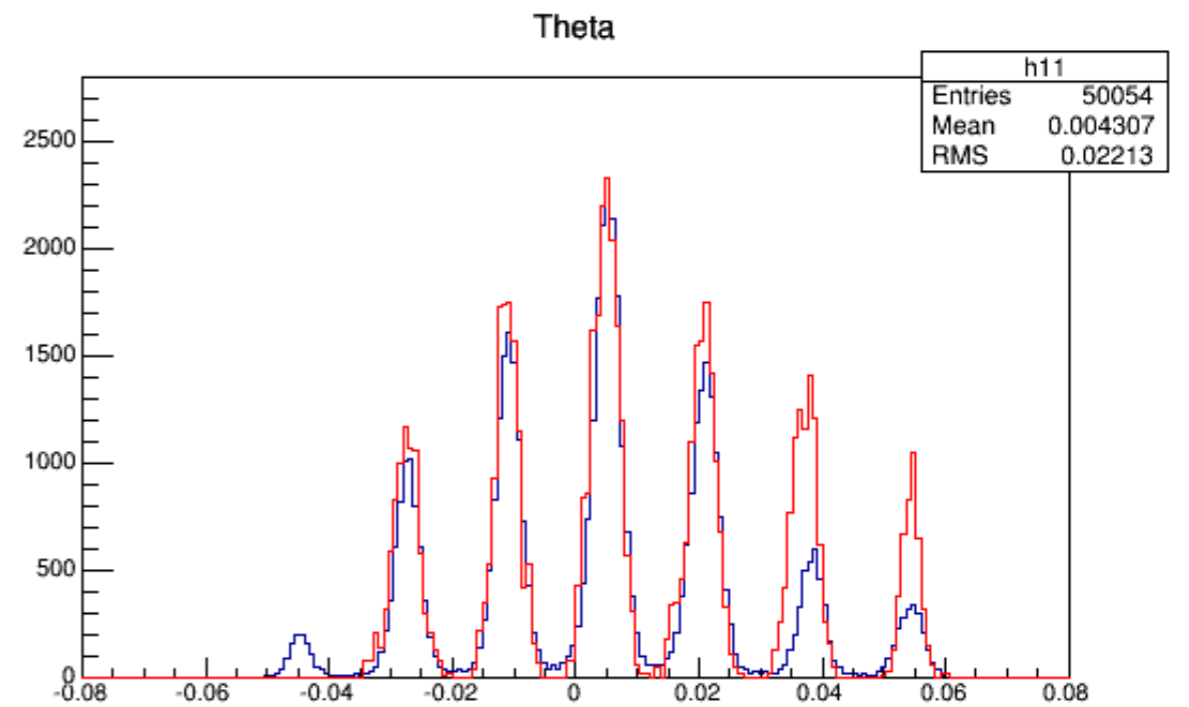
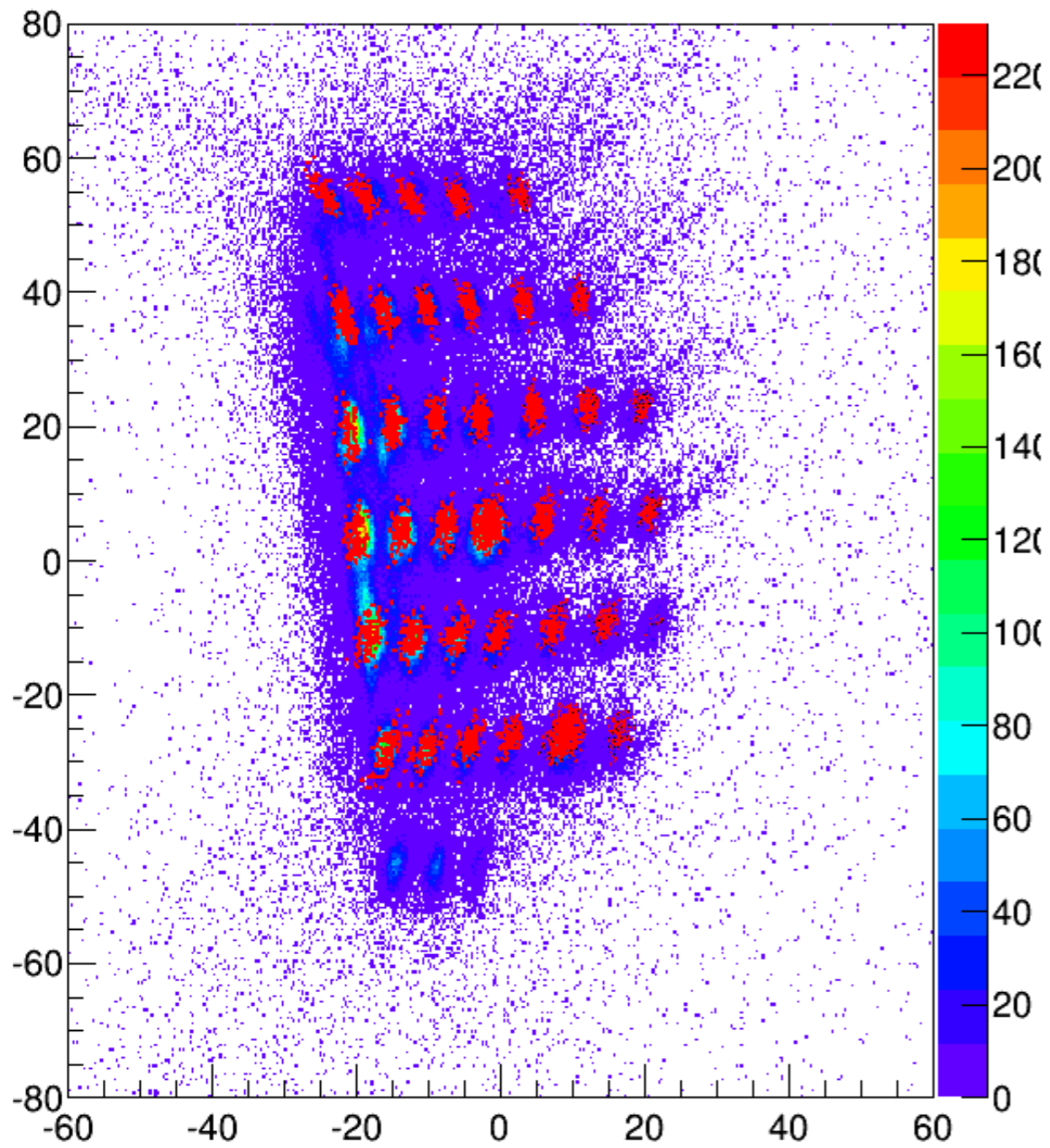
Theta vs Y



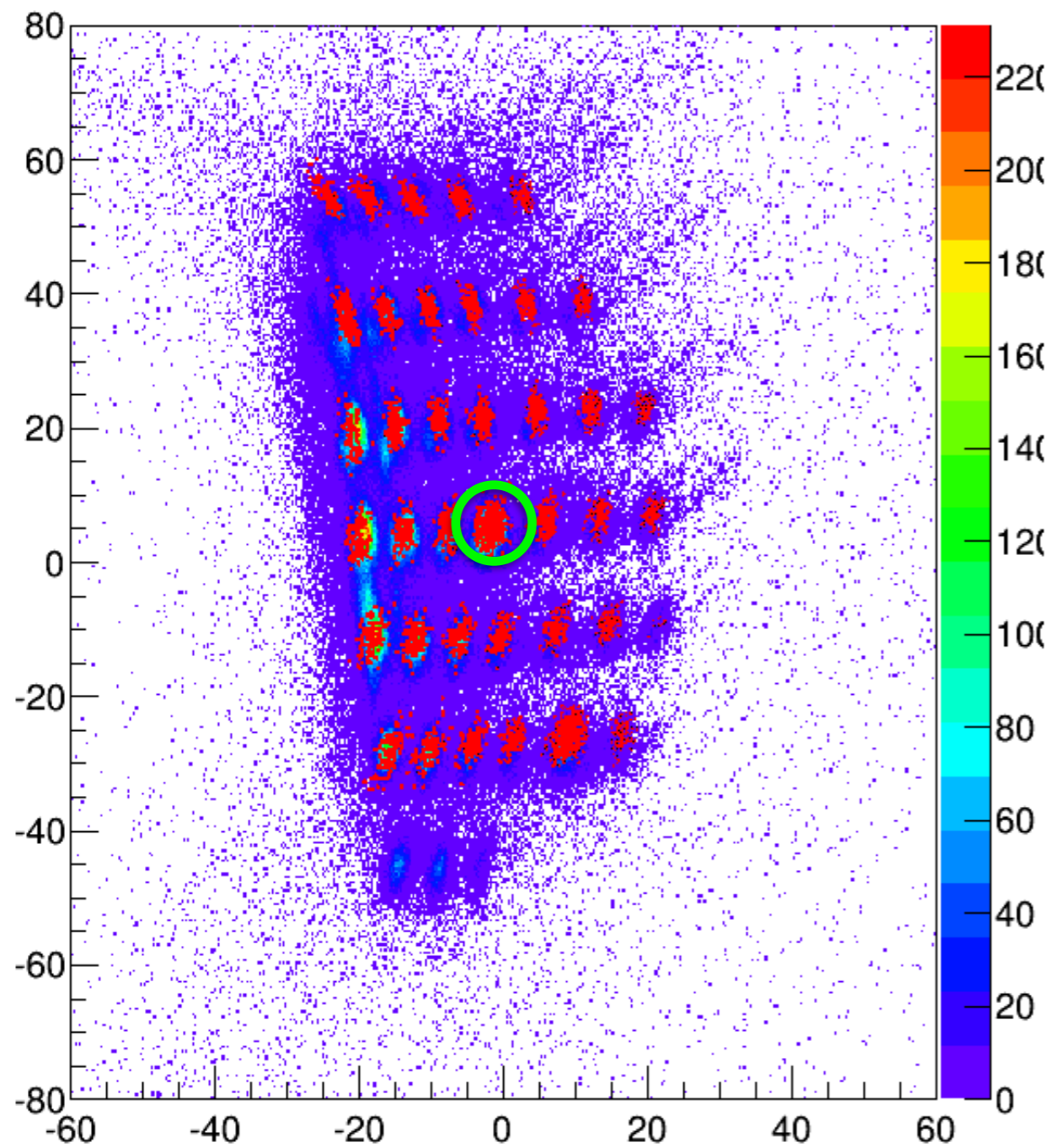
Theta vs dp



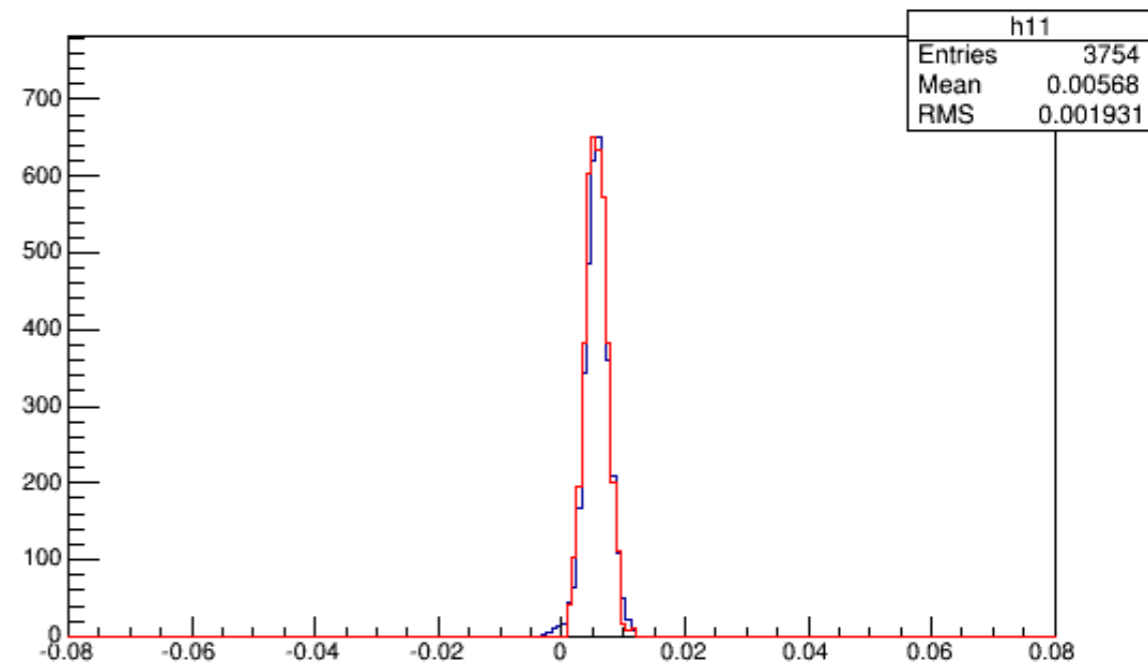
Theta vs Phi



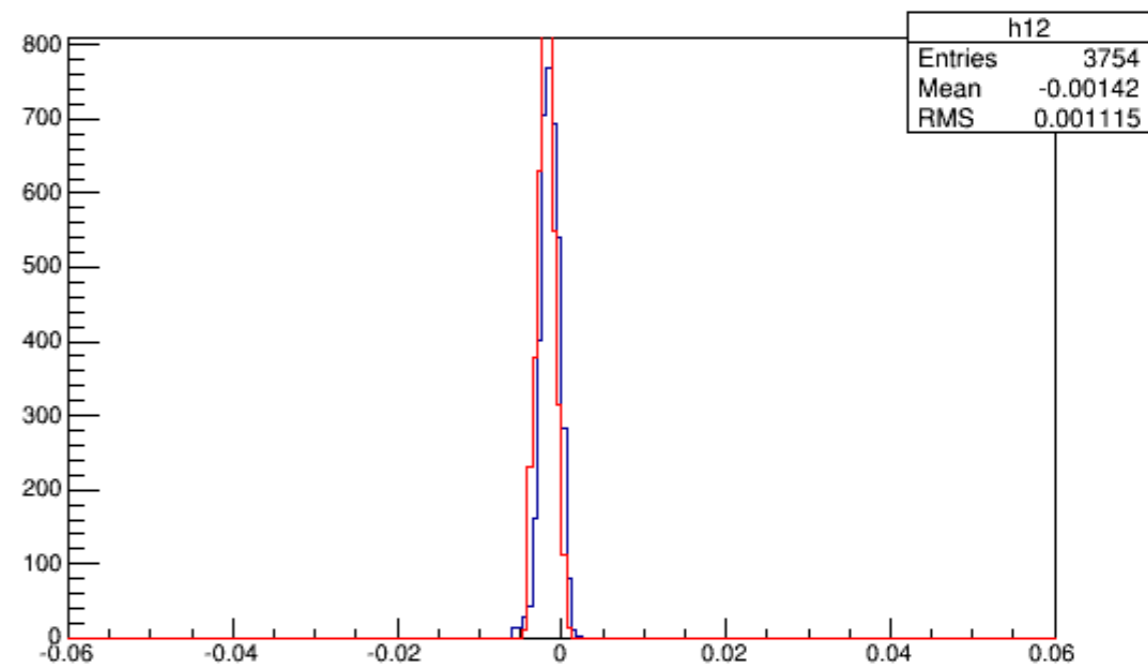
Theta vs Phi



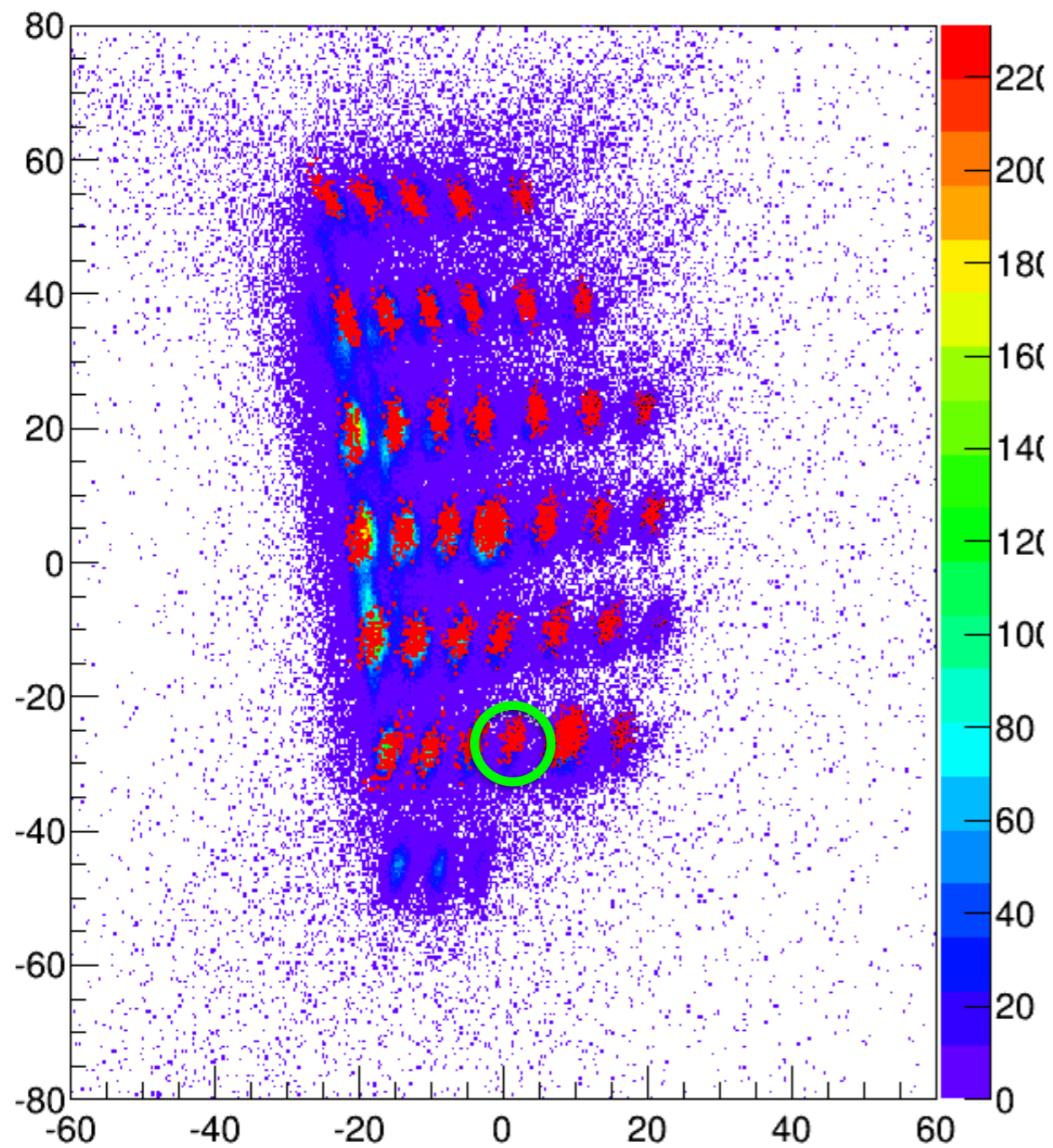
Theta



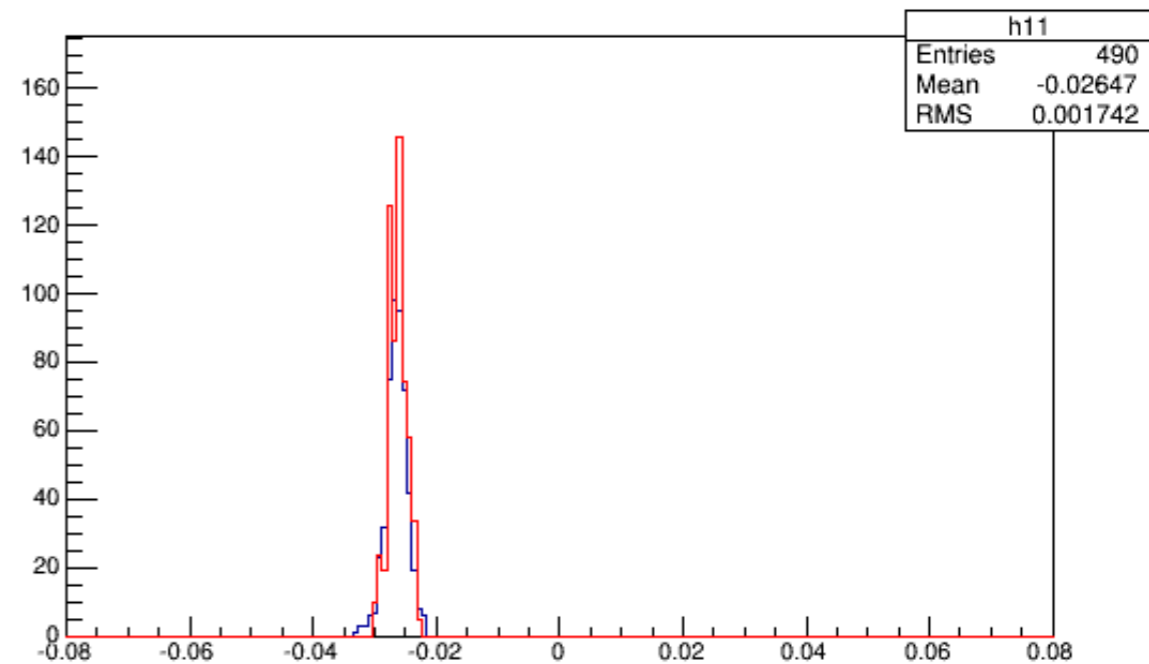
Phi



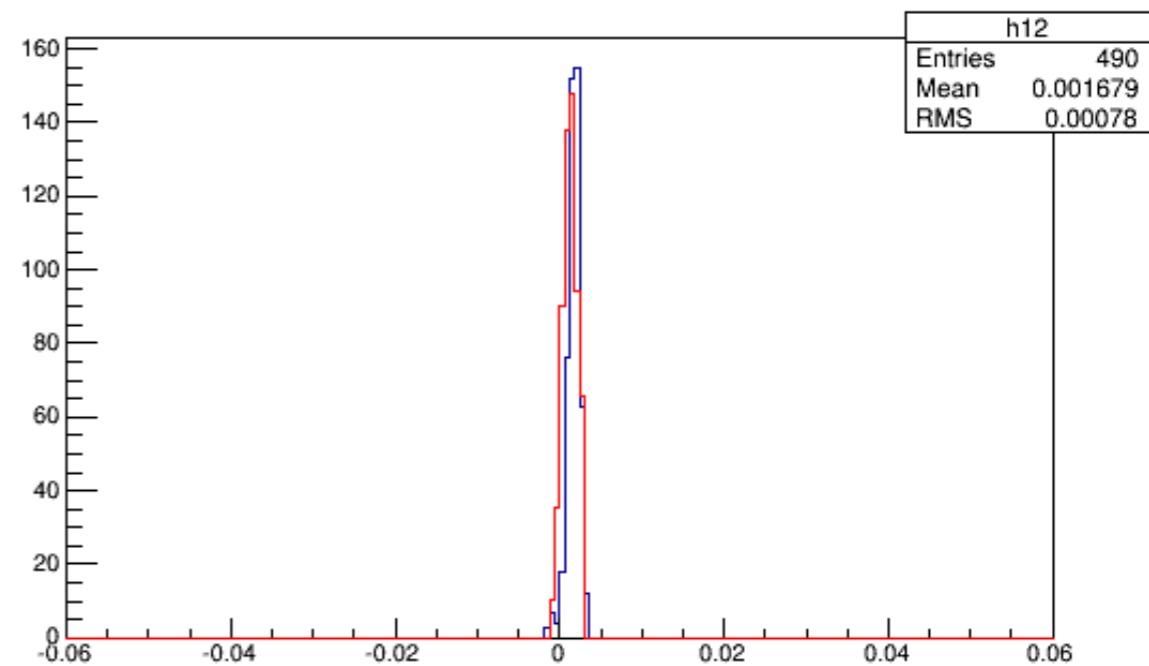
Theta vs Phi



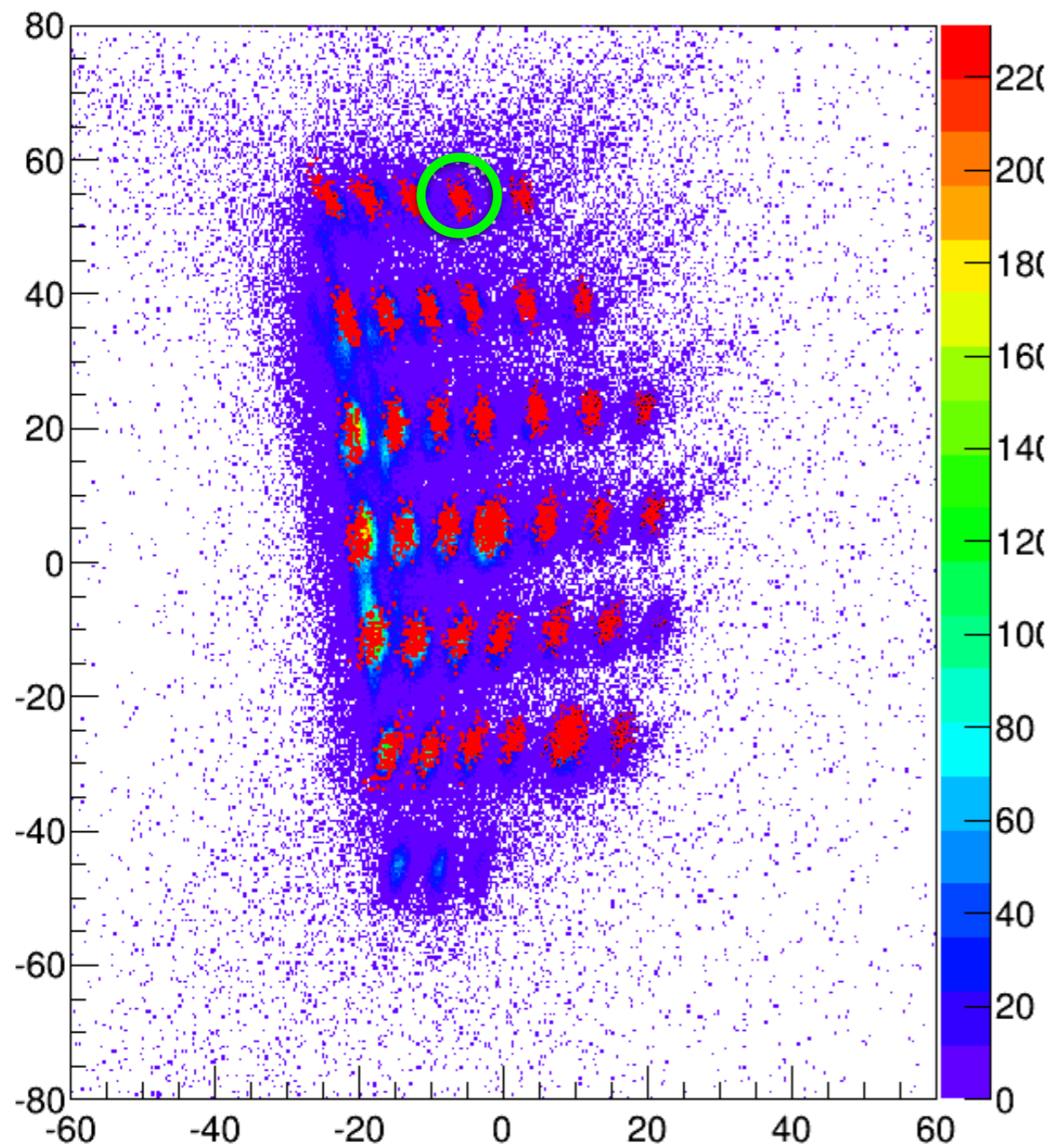
Theta



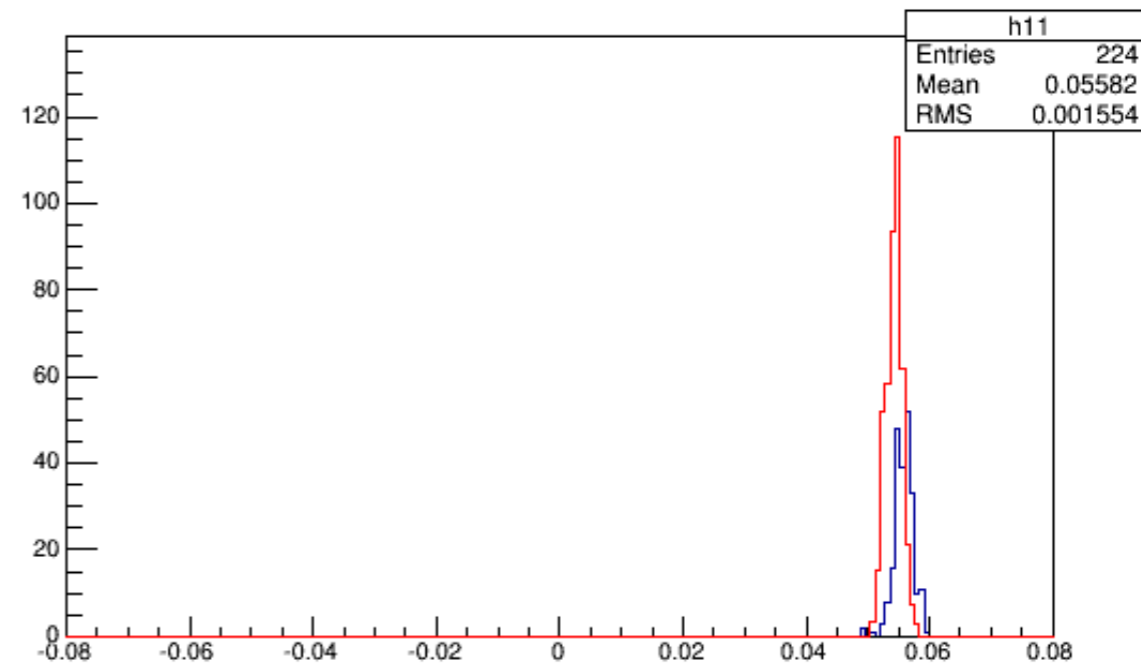
Phi



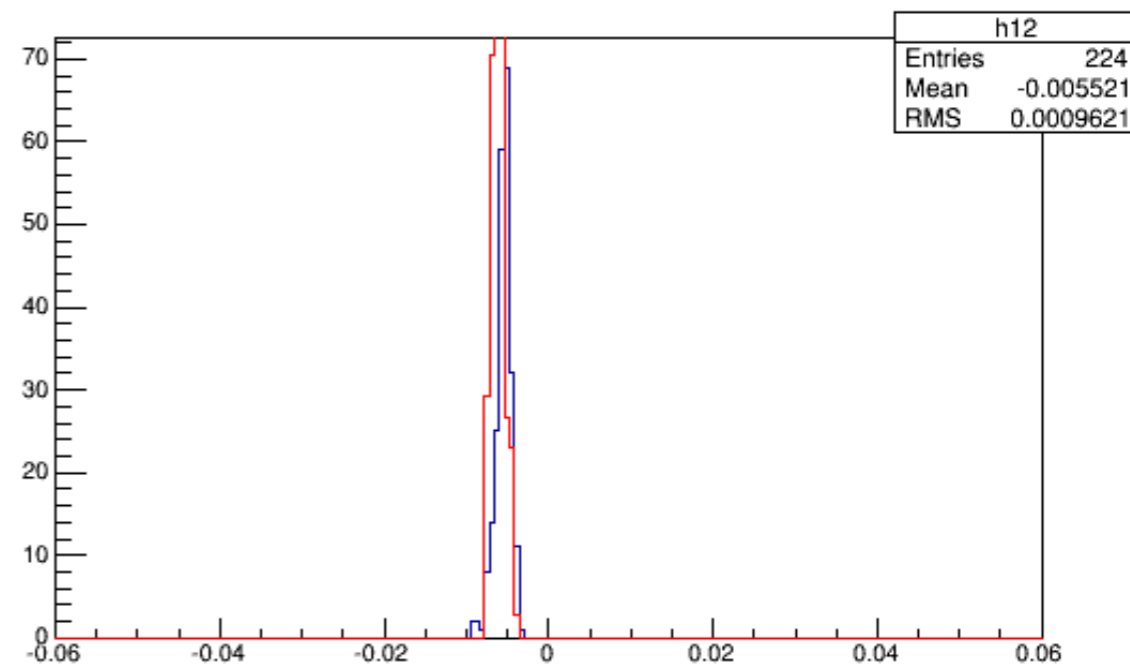
Theta vs Phi



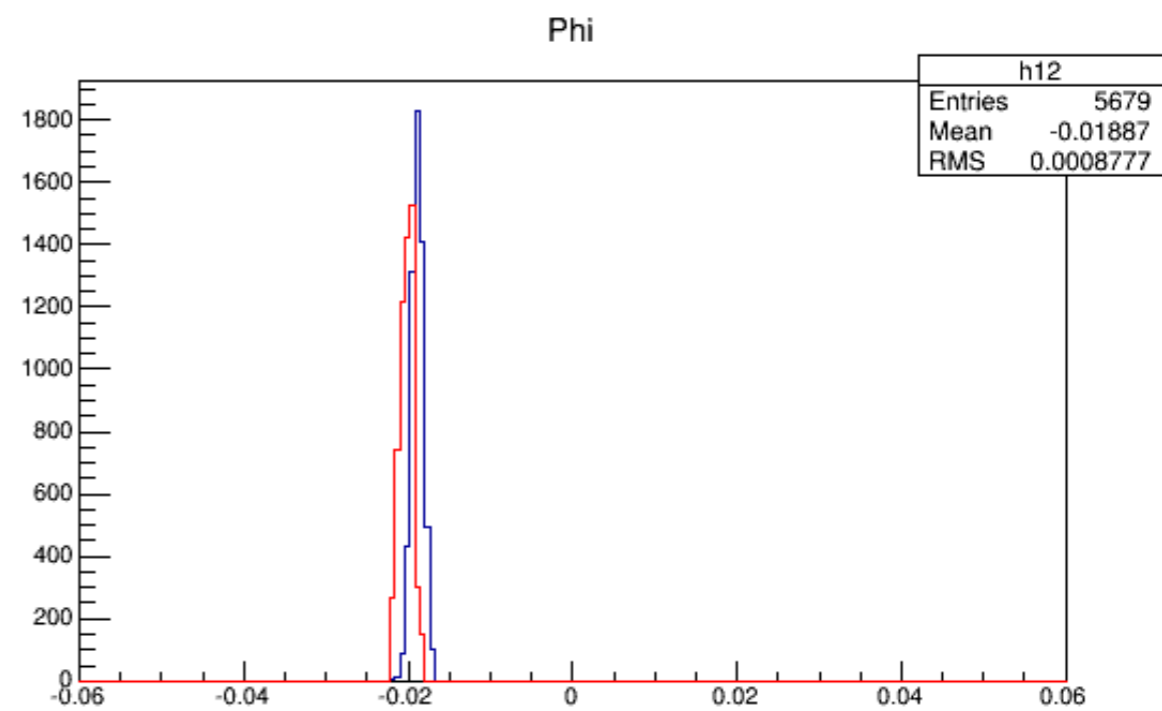
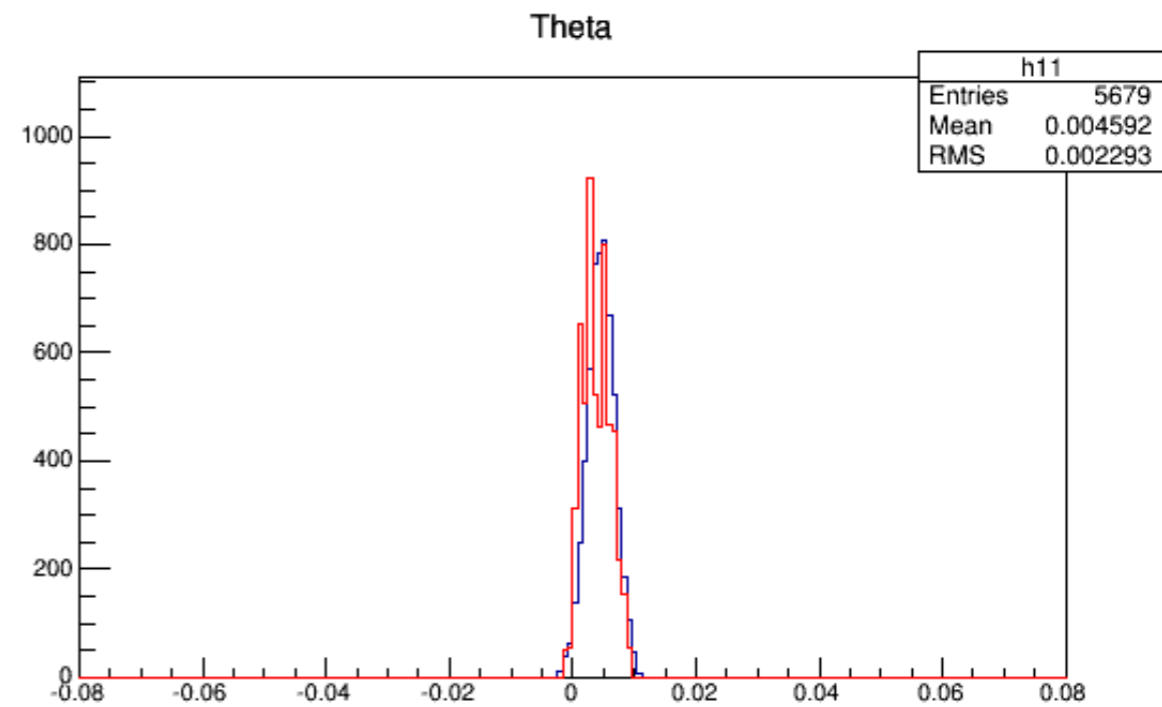
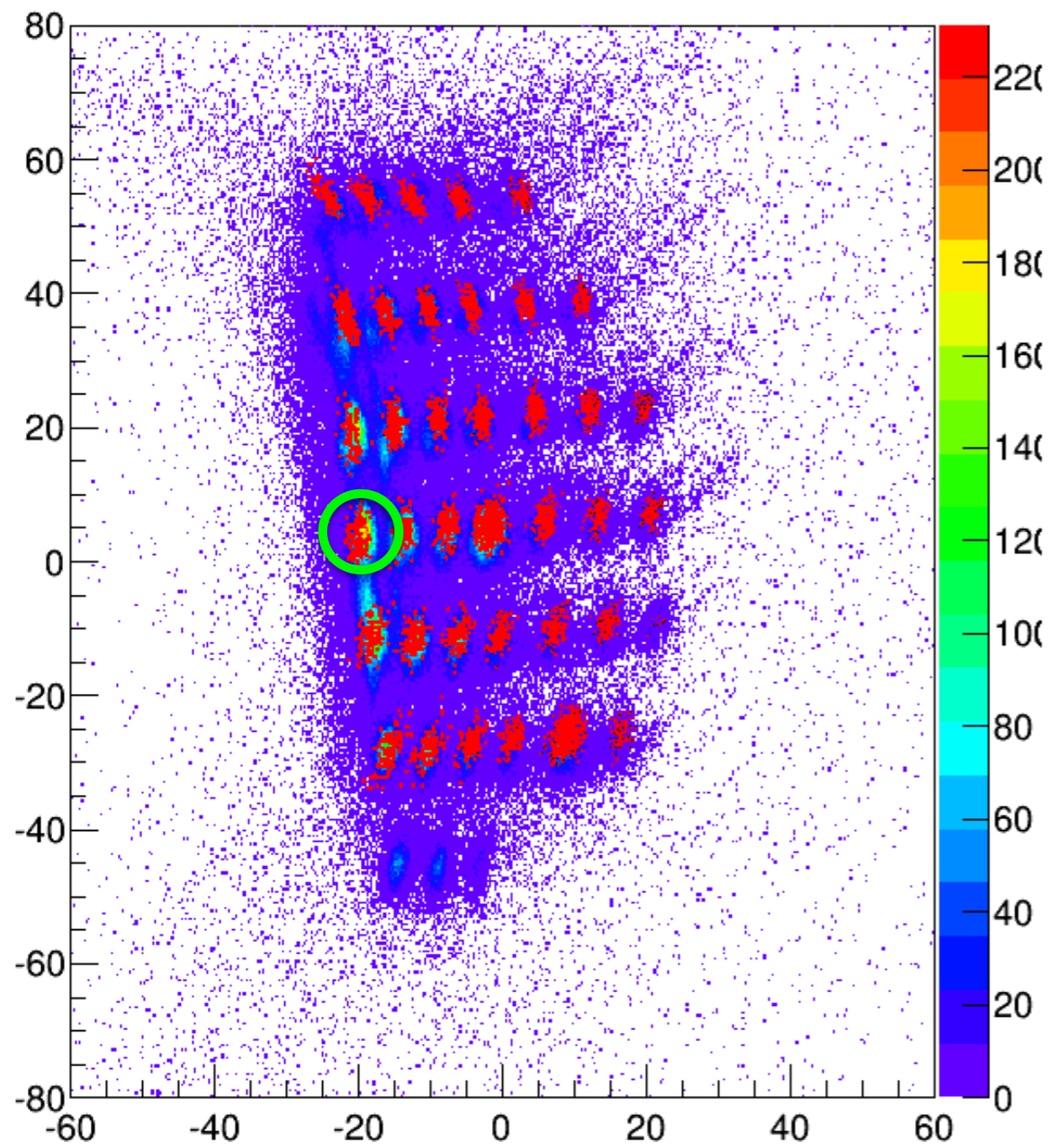
Theta



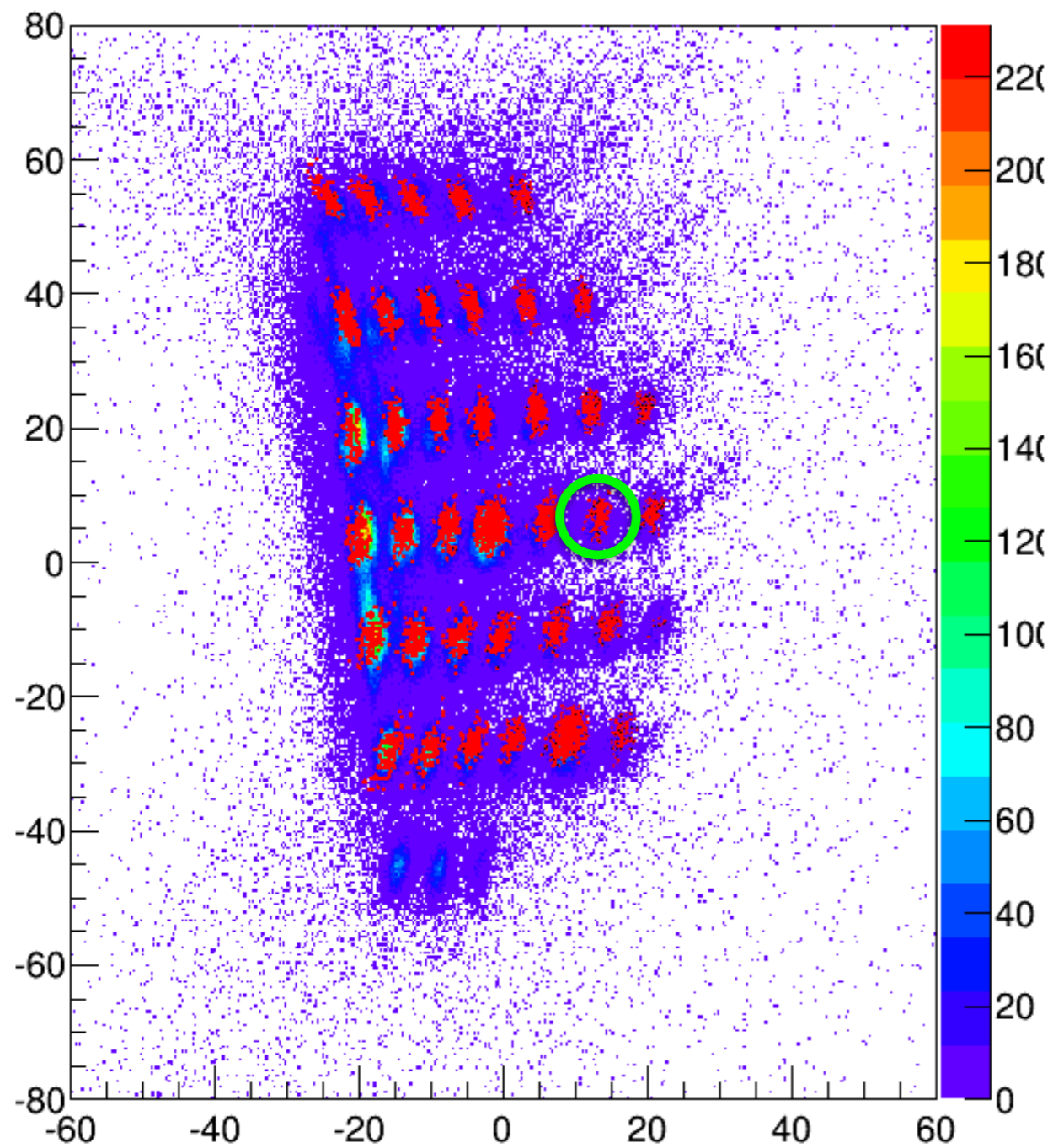
Phi



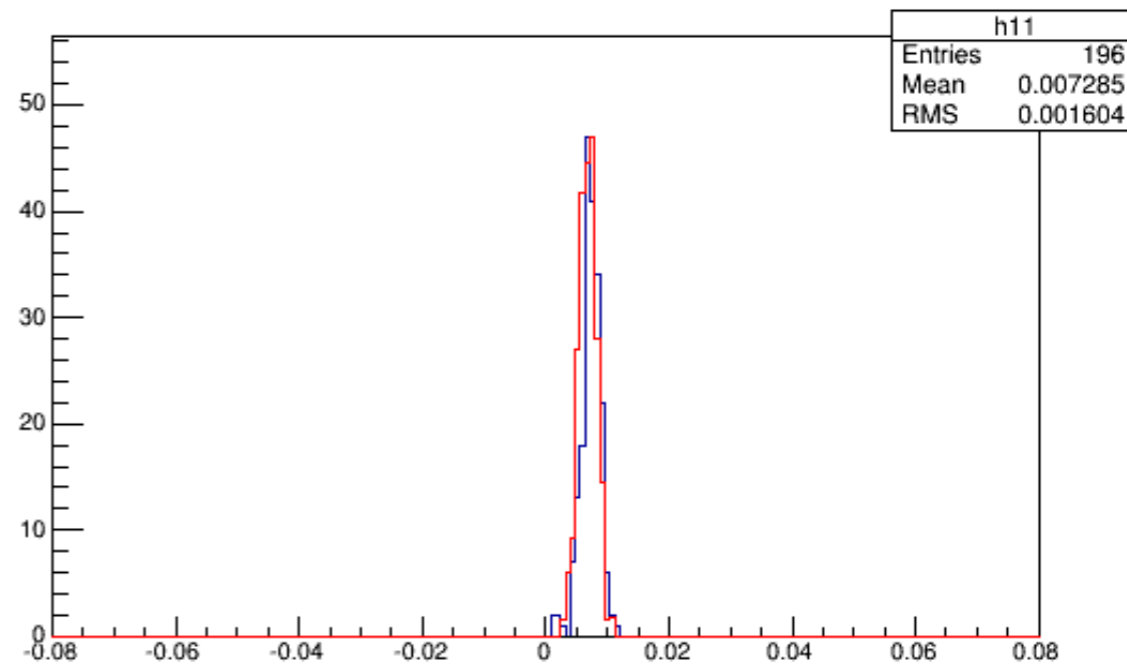
Theta vs Phi



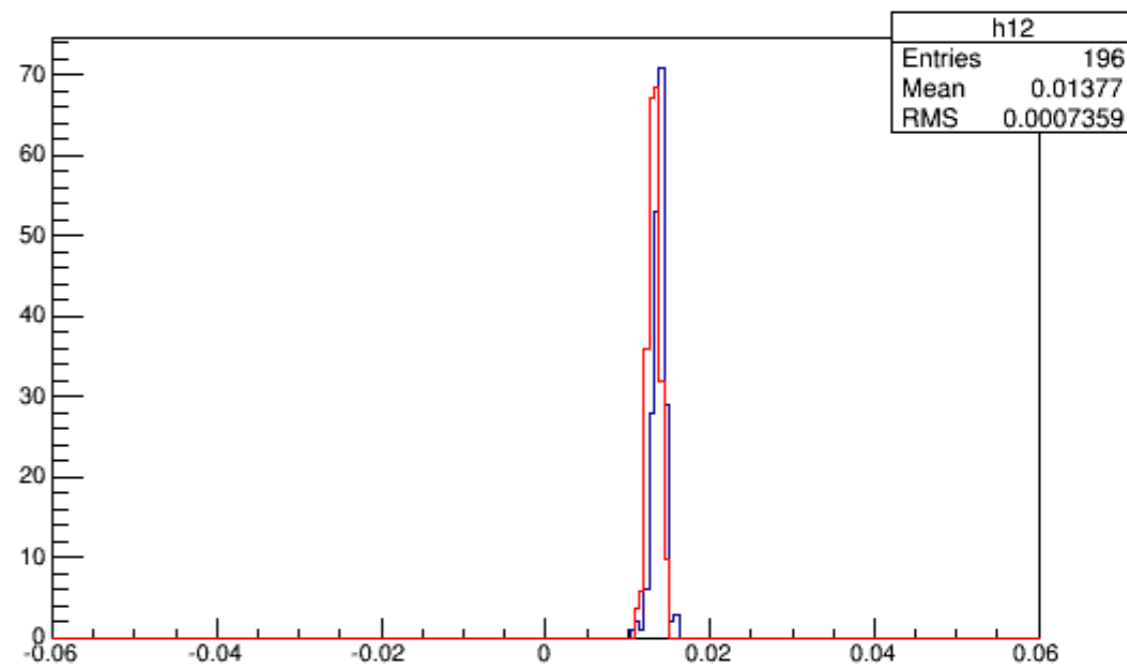
Theta vs Phi



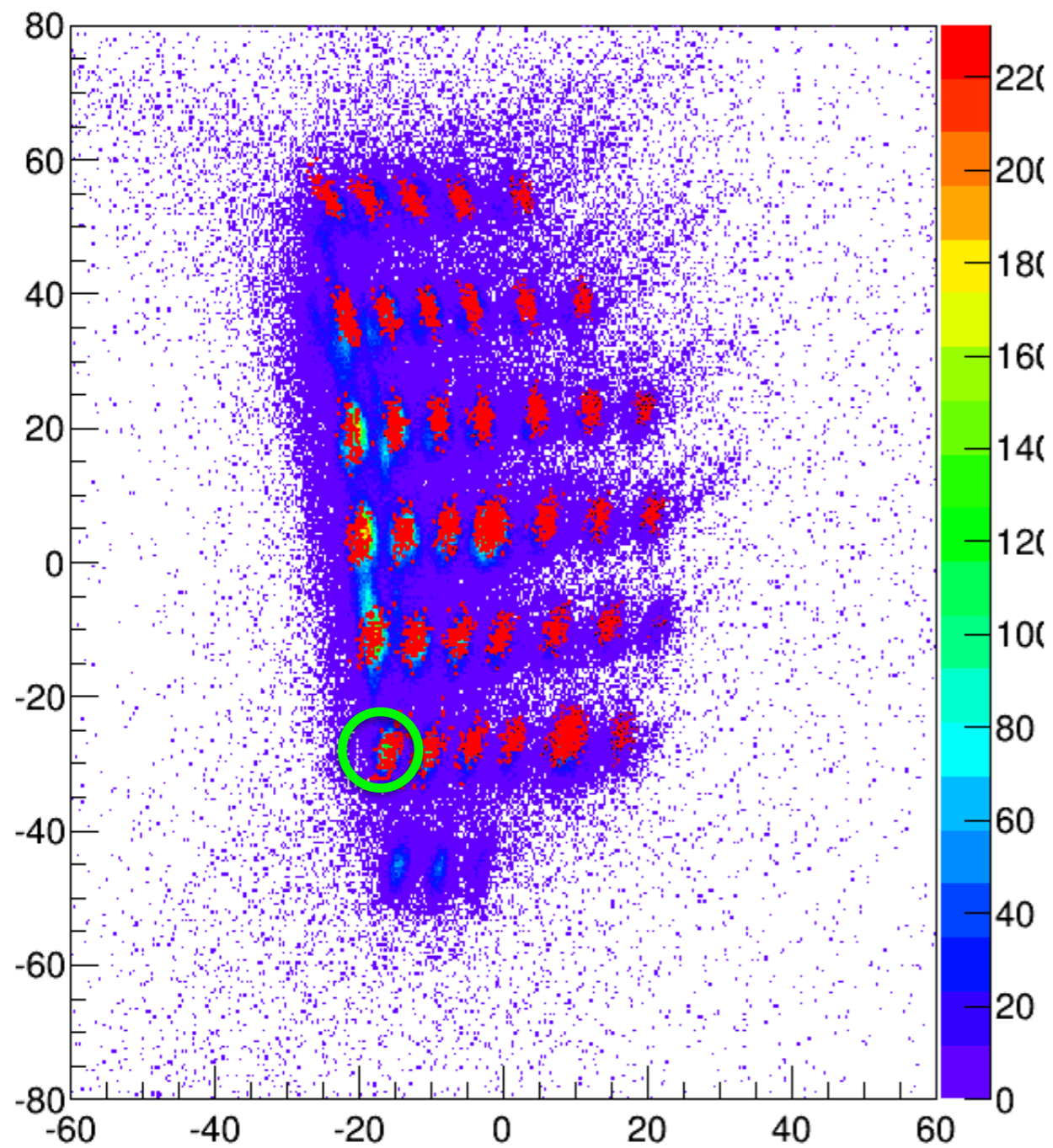
Theta



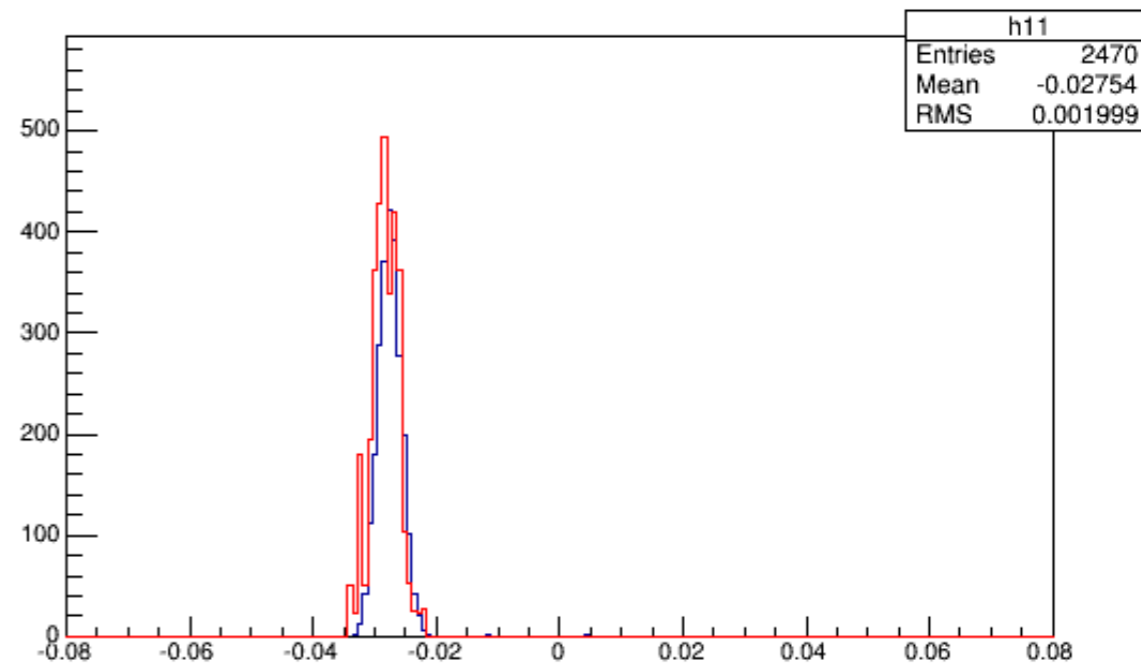
Phi



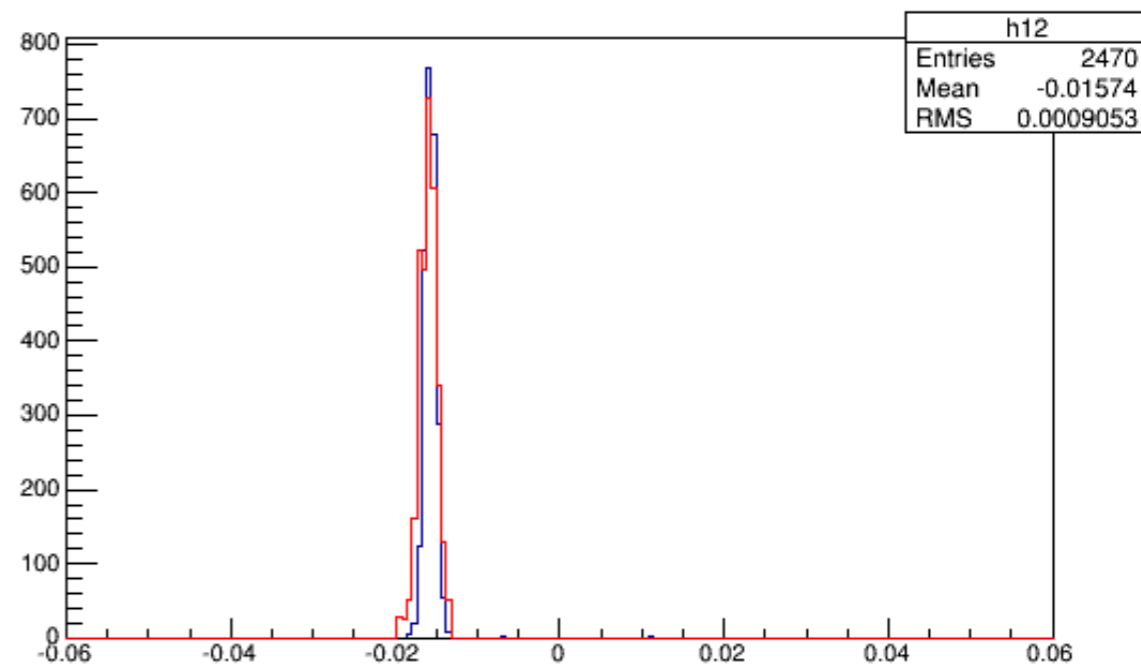
Theta vs Phi



Theta



Phi



Simulation vs Data

- The difference is less than 1 mrad for the holes on the edge
- May cause by the background, still need to clean the data more carefully (on-going)