

# Acceptance Study Update

Chao Gu

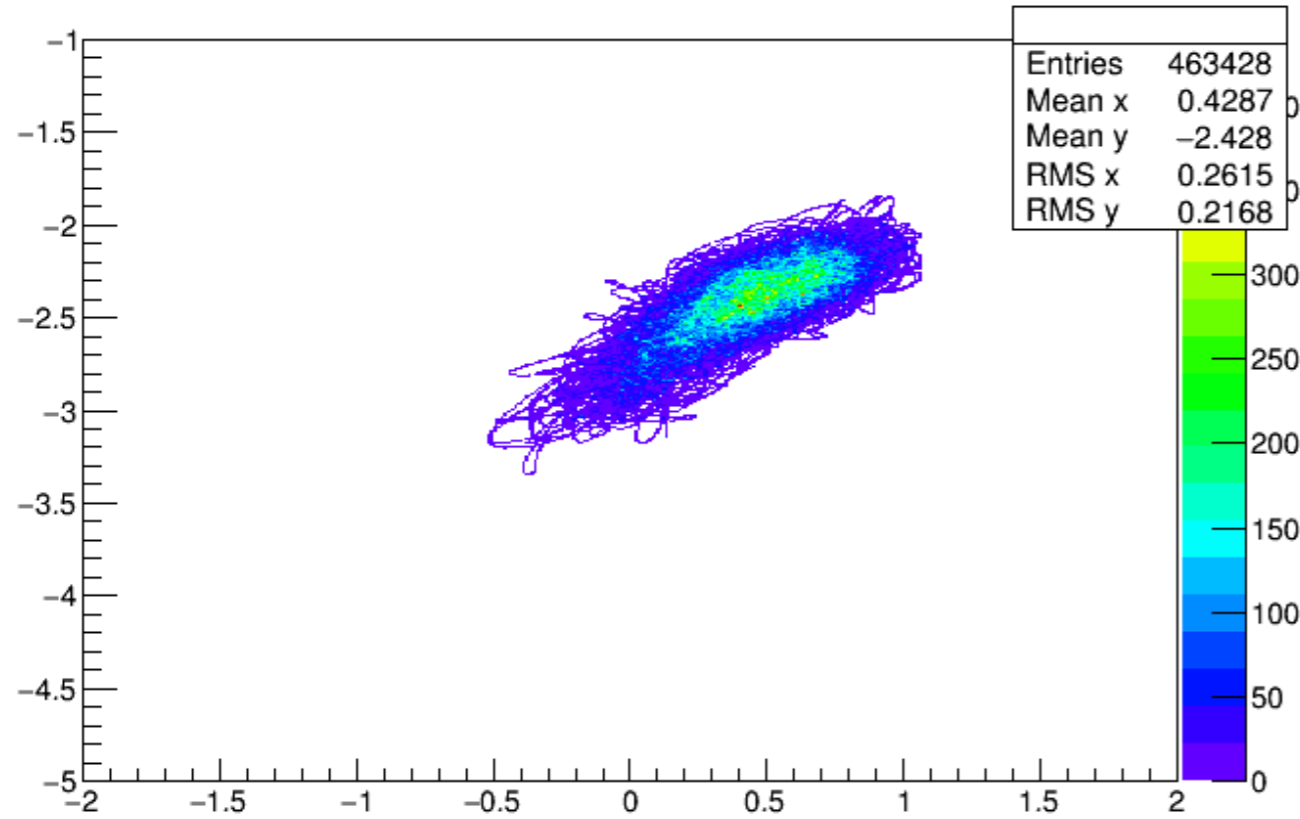
# Status Update

- Compare the simulation with data:
  - The reconstructed kinematics variables has already been tuned during the optics study
  - Use the width of the elastic peak to tune the resolution of the simulation package
  - The width of the elastic peak (dp plot) does not agree well, possibly caused by two resolution
    - Beam profile and BPM resolution
    - VDC resolution

# Status Update

- BPM in the simulation
  - Before in the simulation we only set the center of the beam position and simulate the behavior of two rasters
  - For optics run, it seems that we need to simulate the beam profile
  - The code is updated to simulate an ellipse shape beam profile, which is adequate in this case

### BPM readout from data



### BPM readout from simulation

