

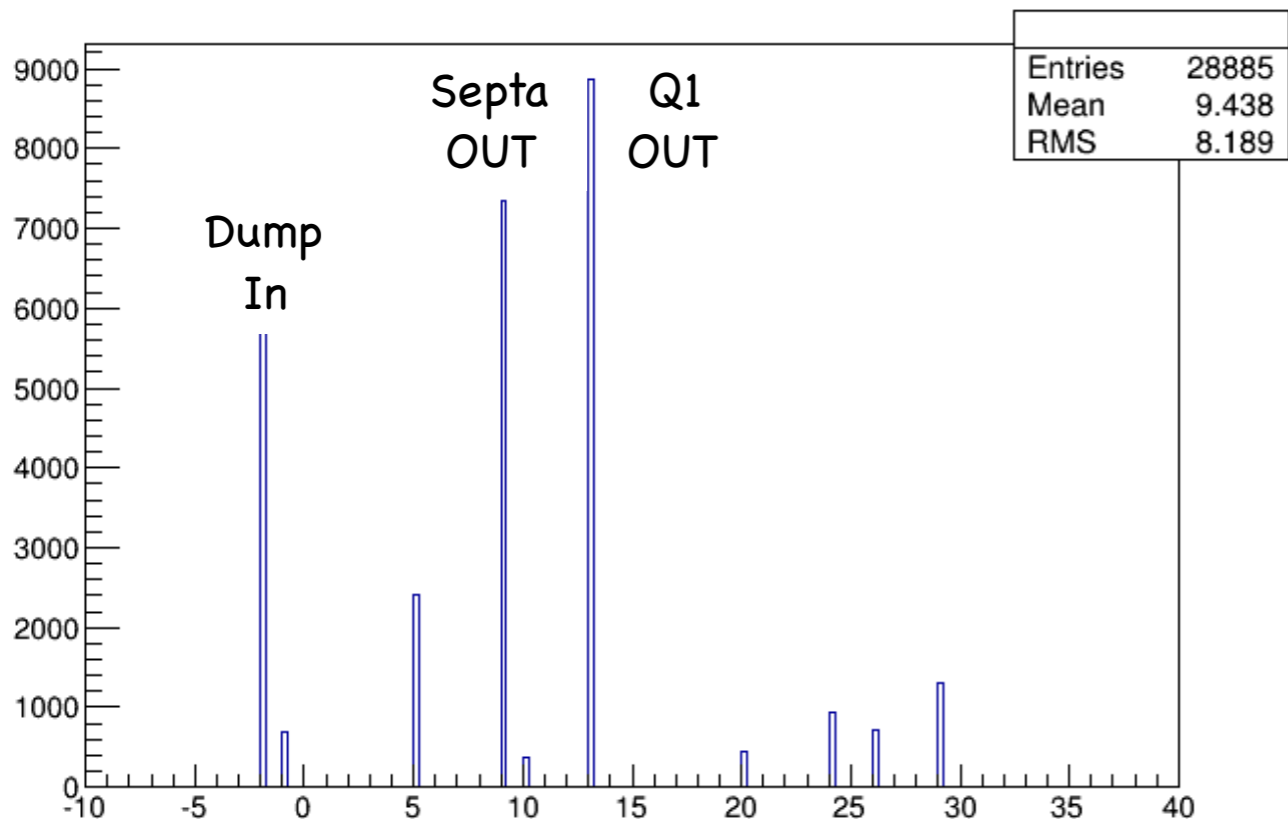
Acceptance Study Update

Chao Gu

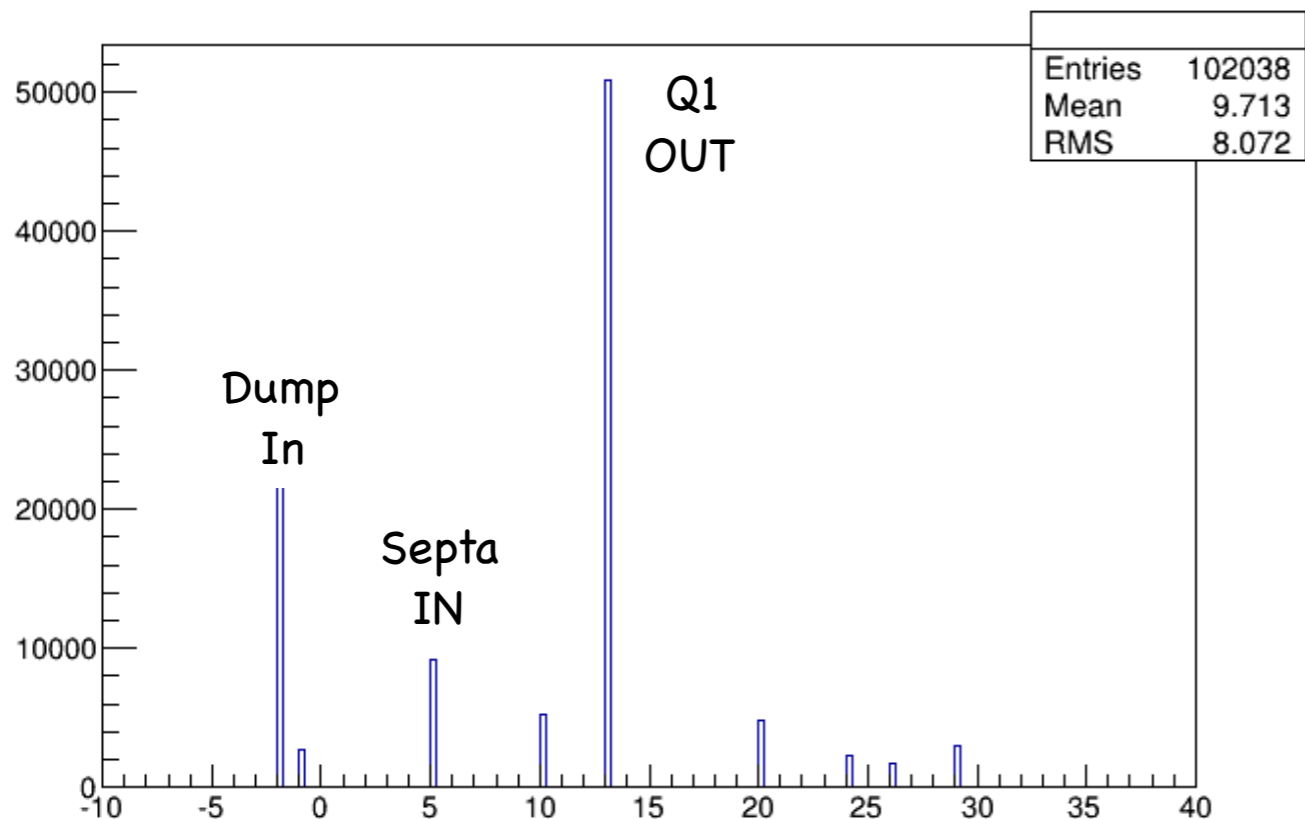
Status Update

- Compare the simulation with data:
- Aperture study
 - Tune the septa exit and Q1 exit since they block most of the particles
- Go back to optics run 5585 and compare more holes
- Check the higher momentum part in simulation for run 5612 is blocked by which apertures in the HRS

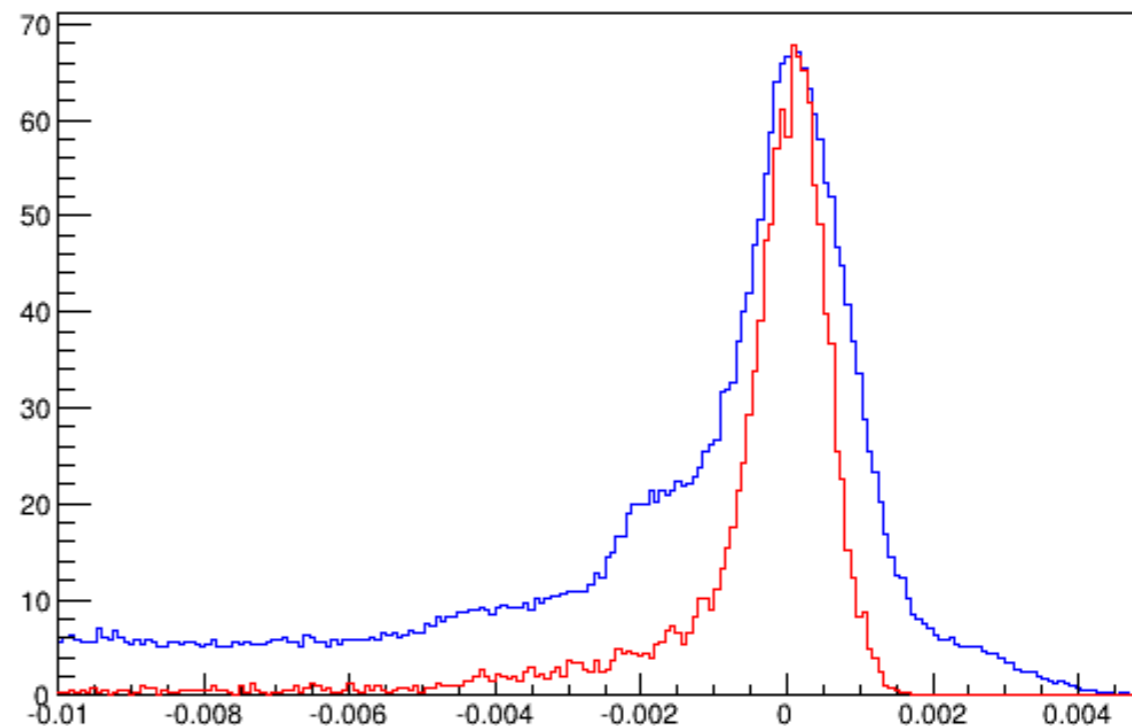
With all apertures



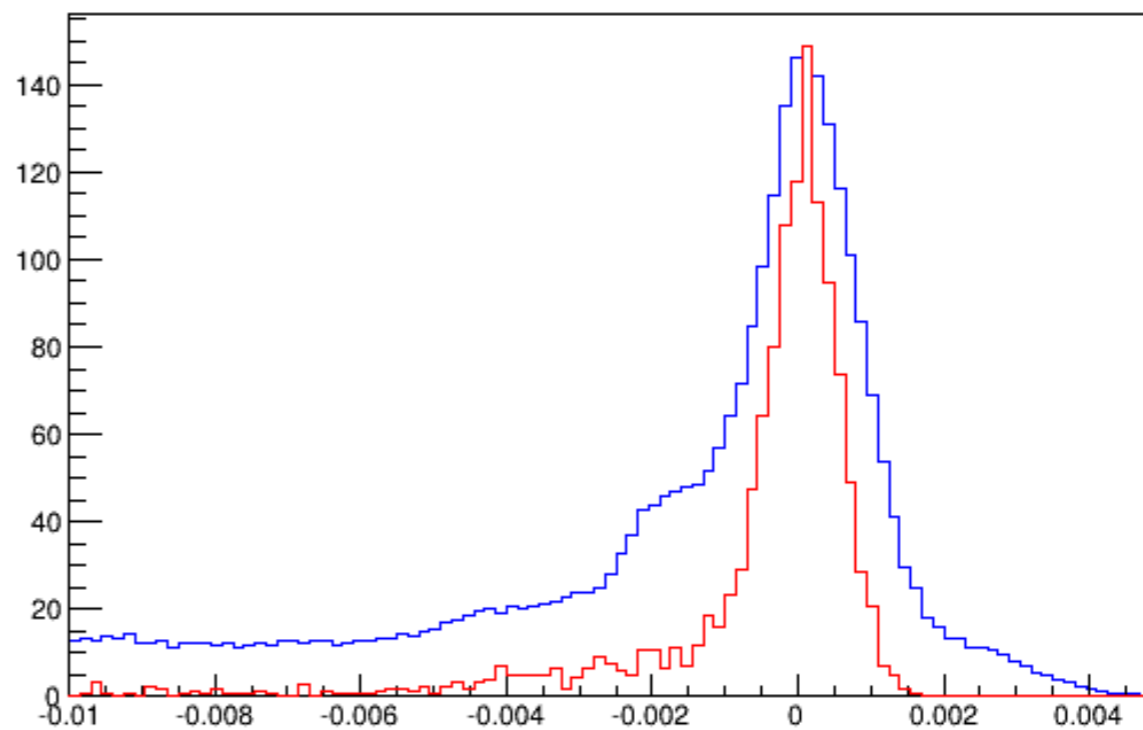
No septa exit



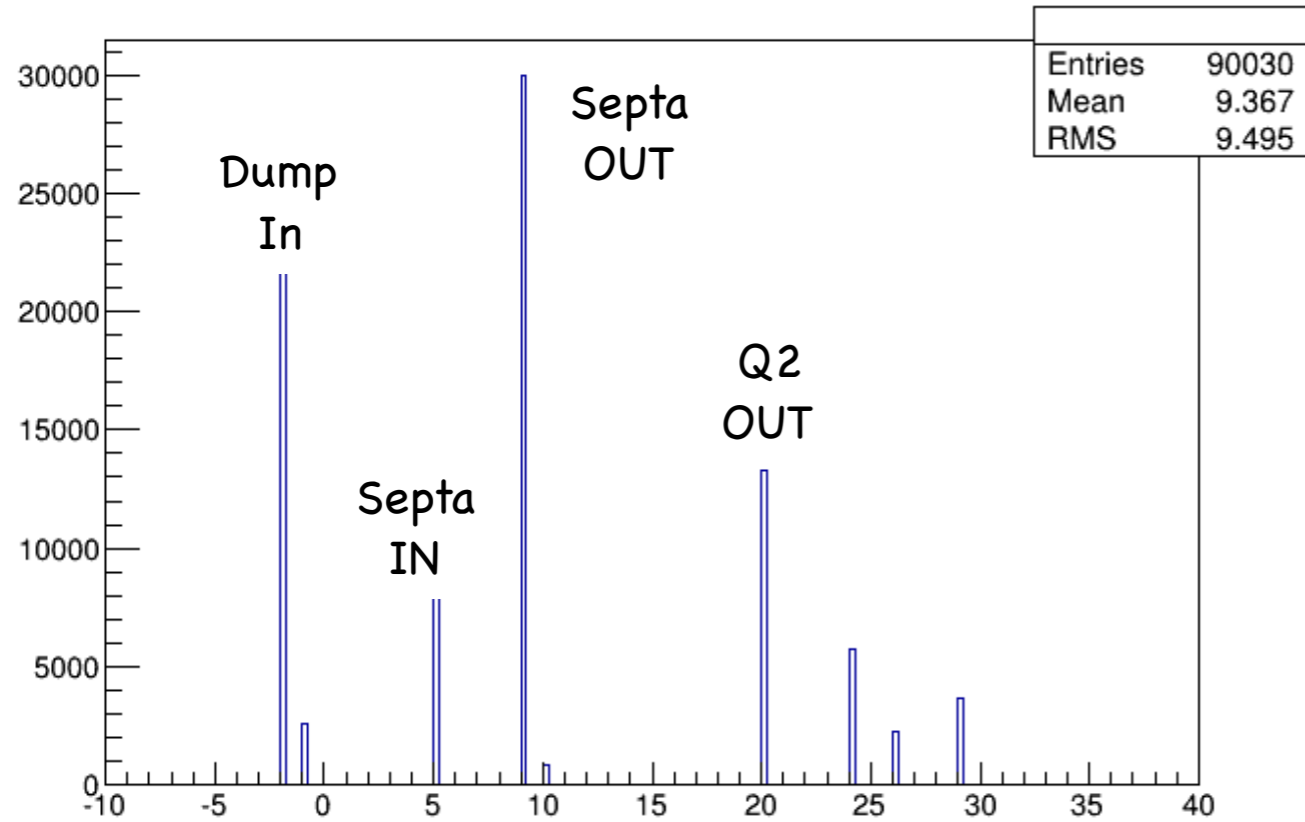
With all apertures



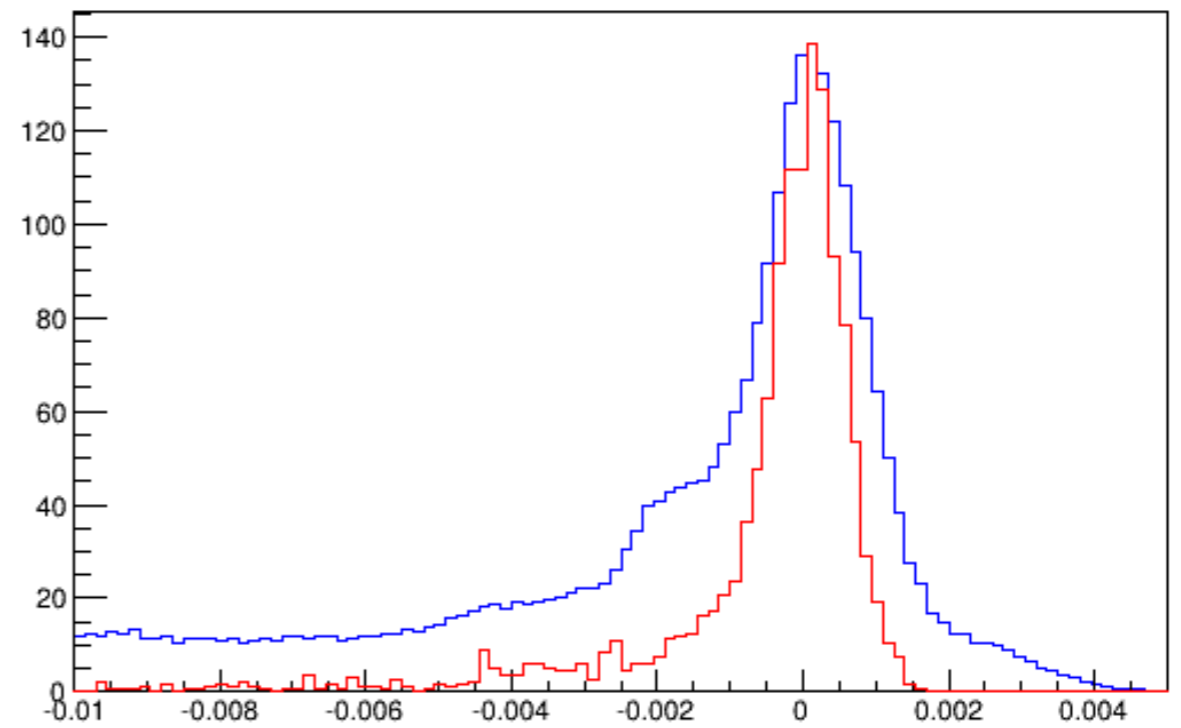
No septa exit



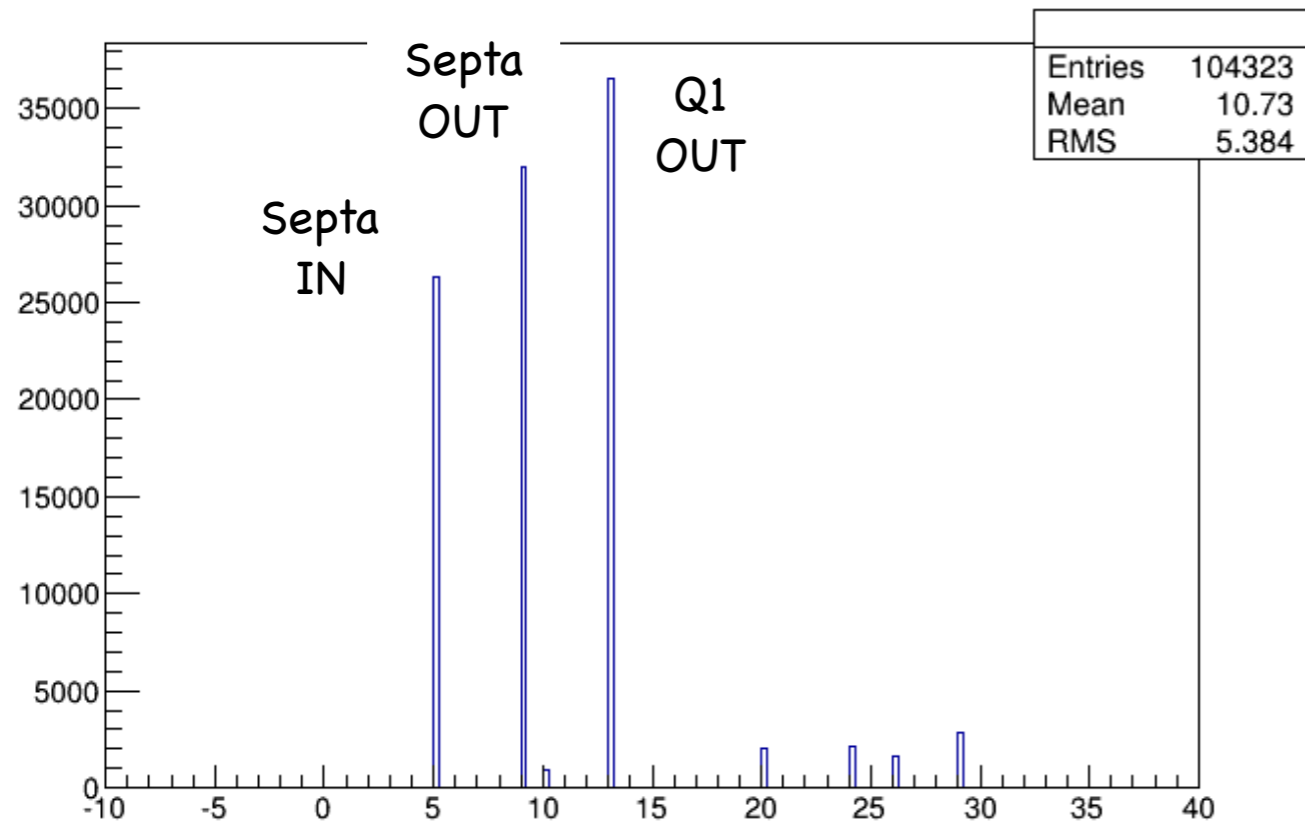
No Q1 exit



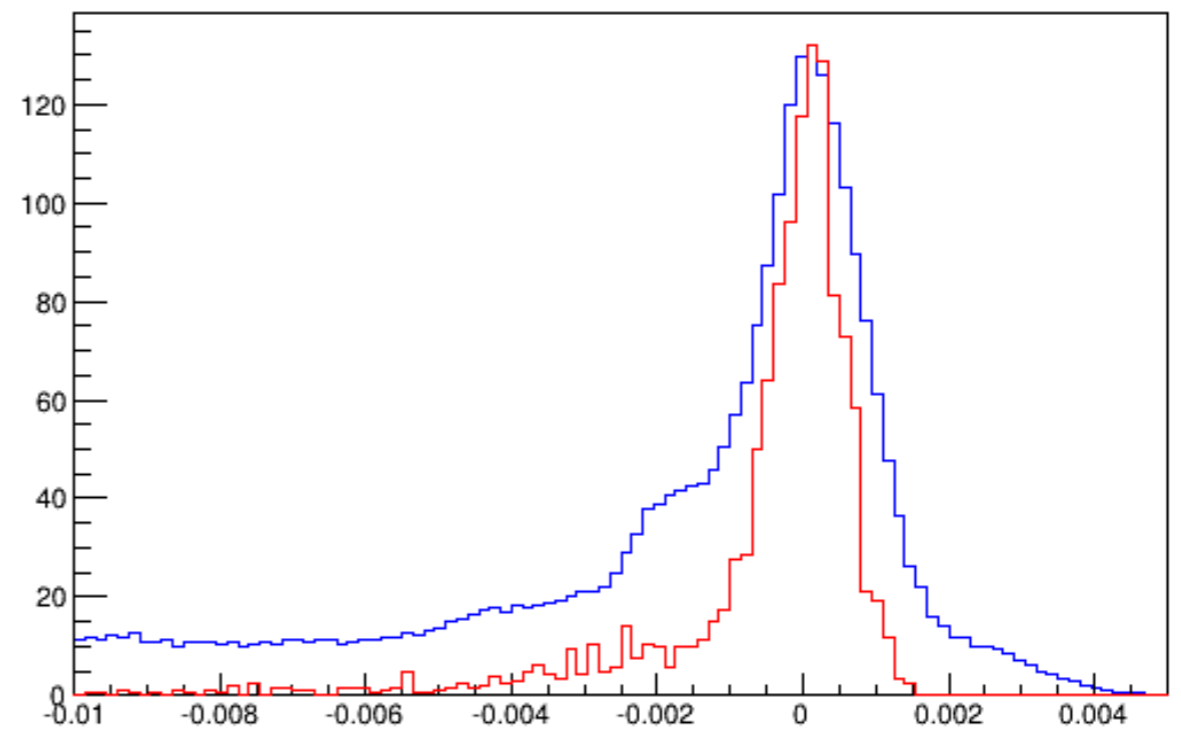
No Q1 exit



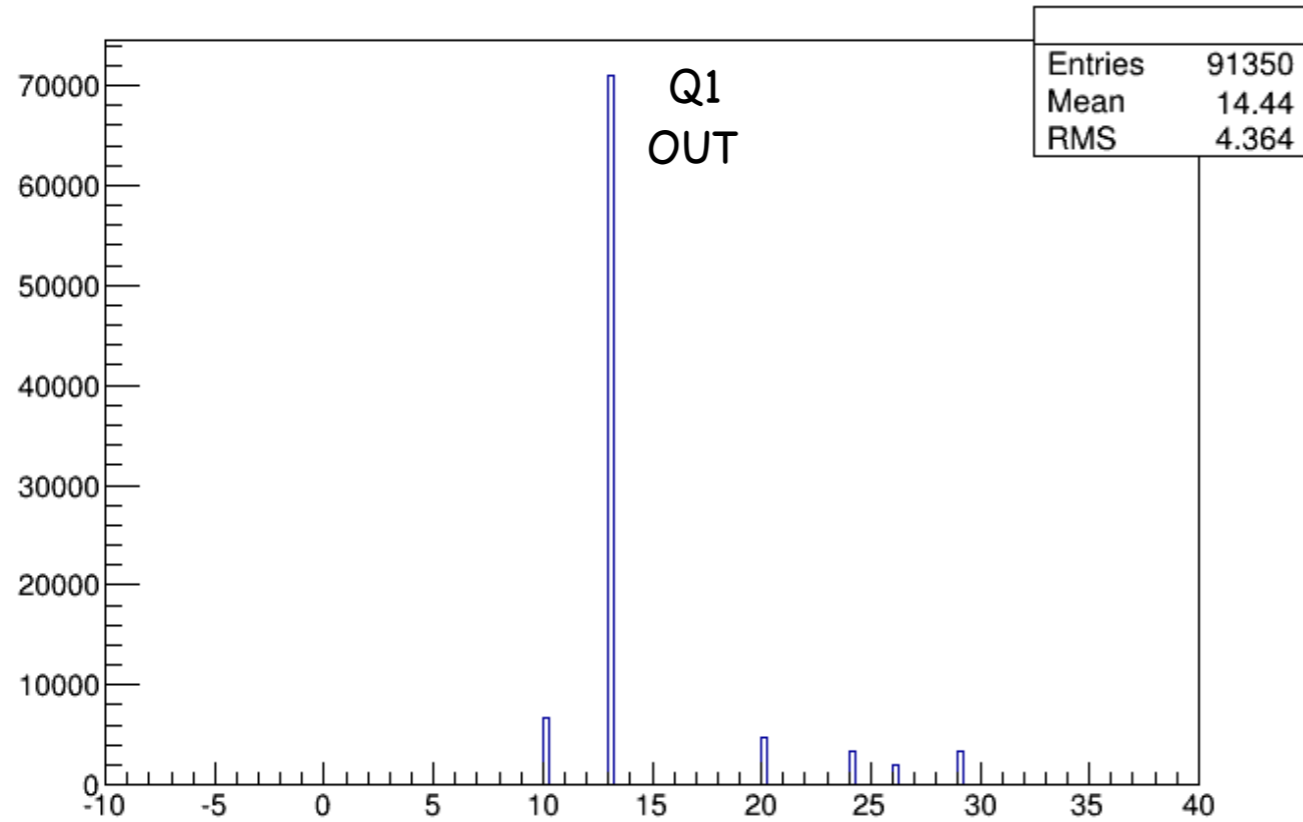
No dump



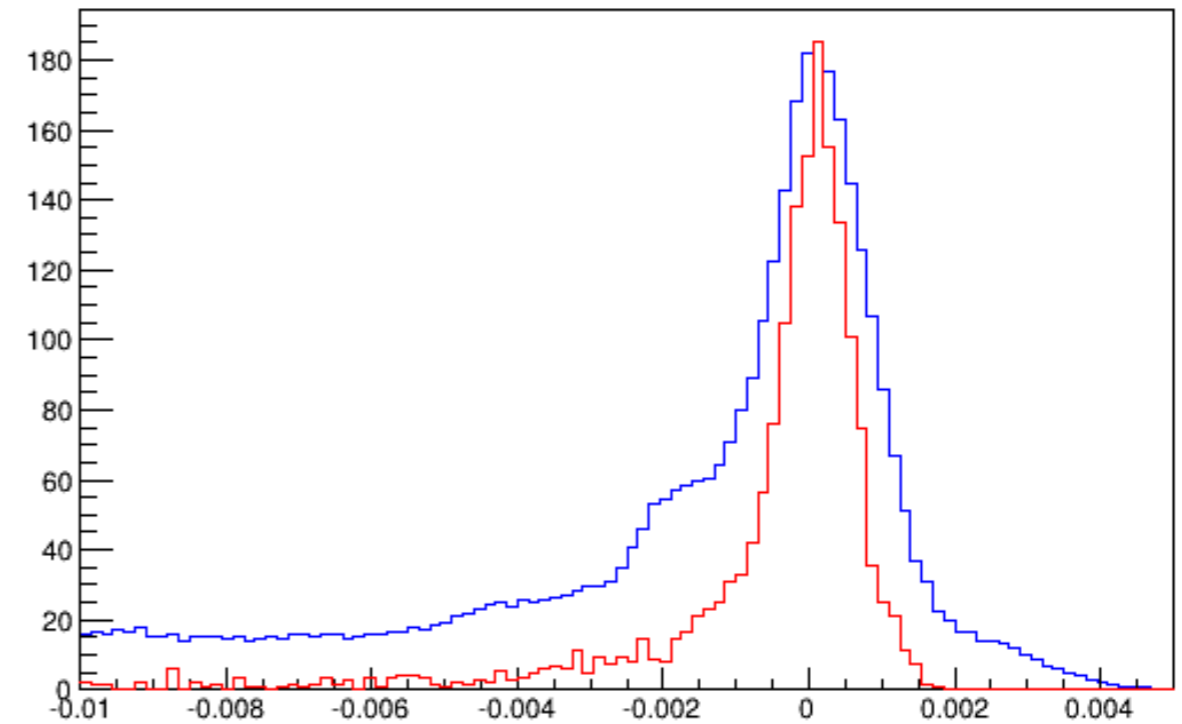
No dump



No dump and septa



No dump and septa



- Top right: $-0.03 < \text{ph} < 0.03$, $-0.06 < \text{th} < 0.06$
- Bottom right: $-0.045 < \text{ph} < 0.045$, $-0.09 < \text{th} < 0.09$

