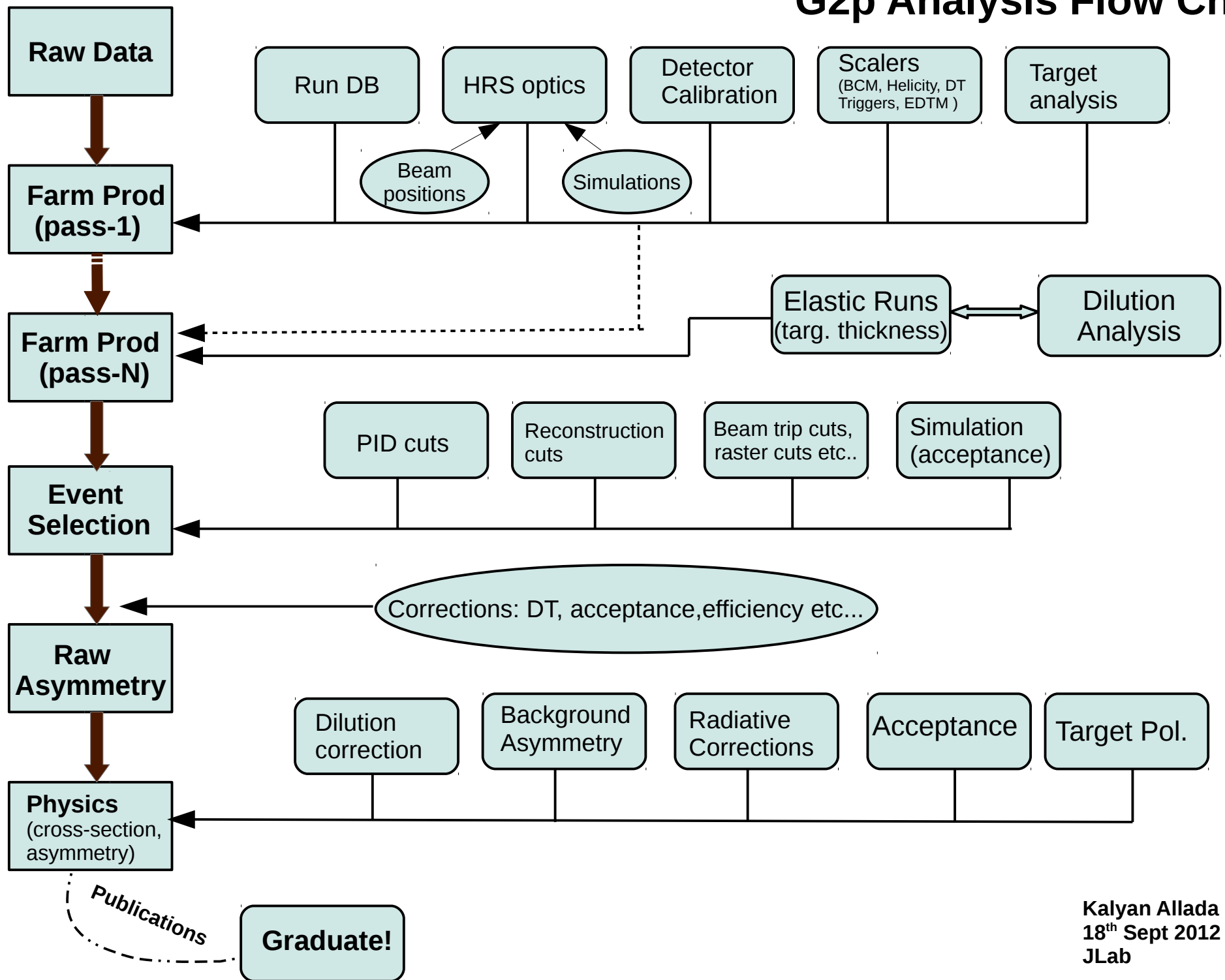
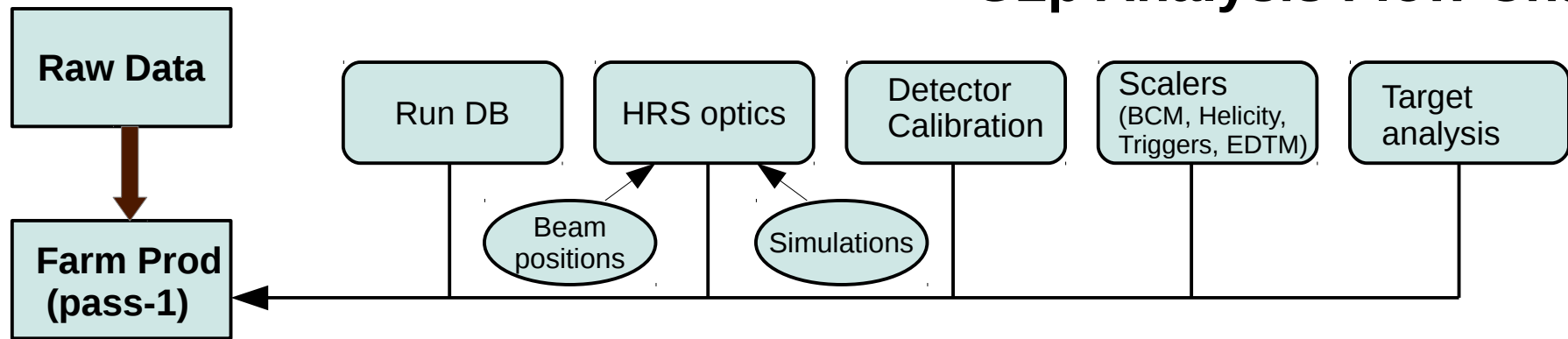


G2p Analysis Flow Chart



G2p Analysis Flow Chart



- Run DB : **done!** (Ryan *et al.*)
- HRS Optics:
 - BPM calibration (**in progress** Pengjia)
 - Field measurement analysis (**done**, Chao *et al.*)
 - VDC t_0 calibration (**done**, Min/Jie)
 - Optimization of straight through runs (**in progress**, Min)
 - Simulation:
 - Reconstruction with target field (**in progress**, Jixie *et al.*)
- Detector Calibrations:
 - Gas Cerenkov (**done**, Melissa/Jie)
 - Lead glass (**in progress**, Melissa/Jie)
 - S1 and S2m calibration (**not started?**)
- Scalers:
 - BCM calibration (**done**, Pengjia)
 - Helicity decoding (**done**, Chao)
 - Run-by-run deadtime calculation (**in progress?** Ryan)
- Target Analysis:
 - TE calibration (**in progress**, Toby *et al.*)
 - Run-by-run polarization (?)
 - Anything else?