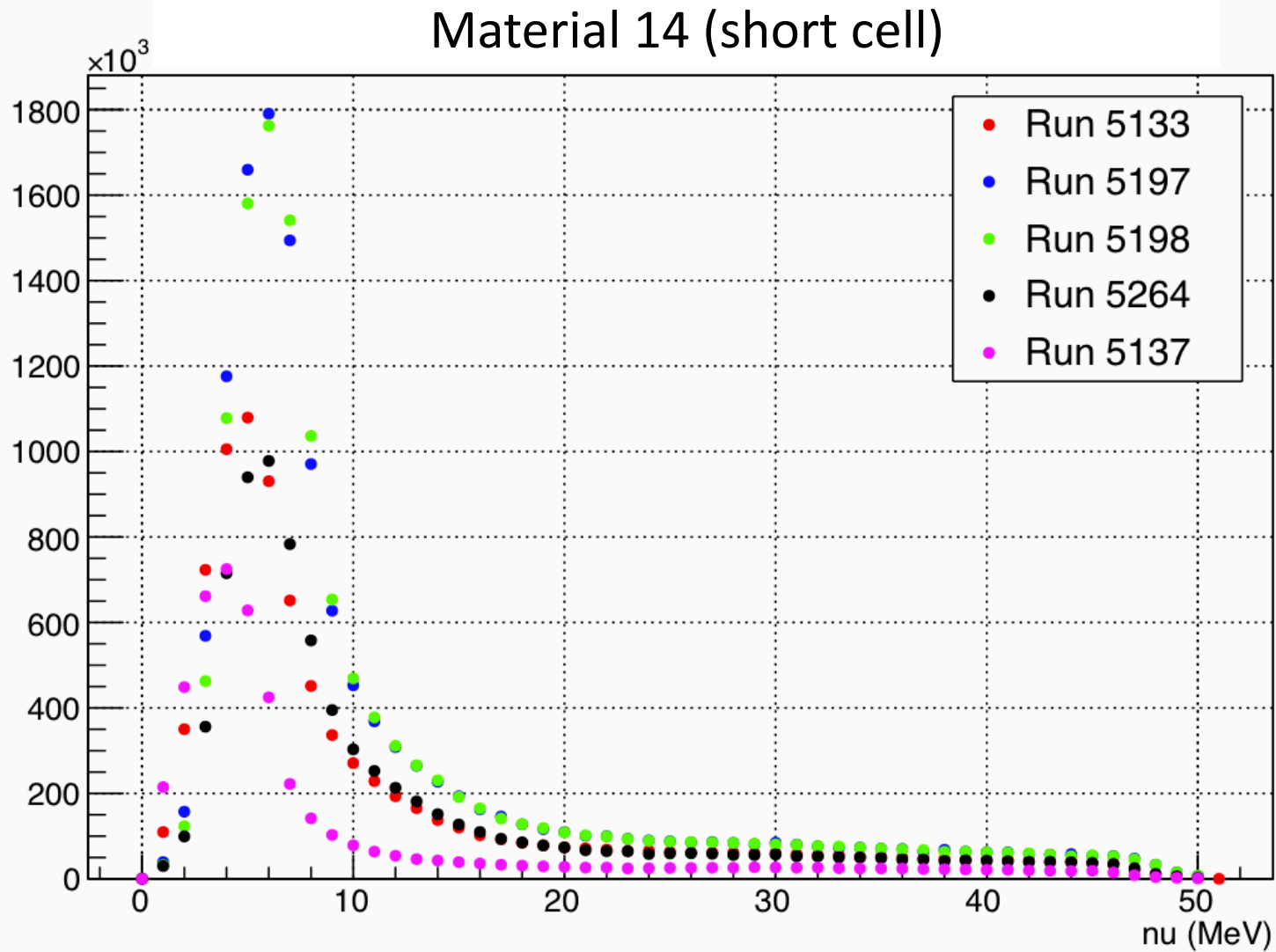


Packing Fraction

M. Cummings

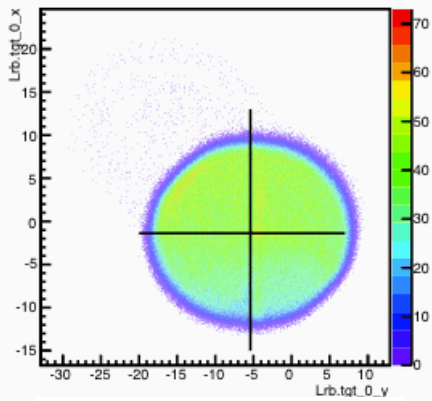
05/13/15

1.1 GeV, 2.5T, Transverse

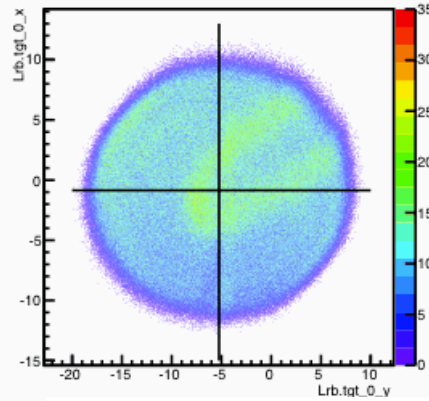


1.1 GeV, 2.5T, Transverse

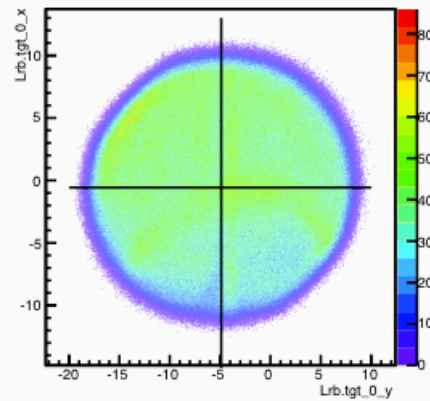
Run 5133– mat 14



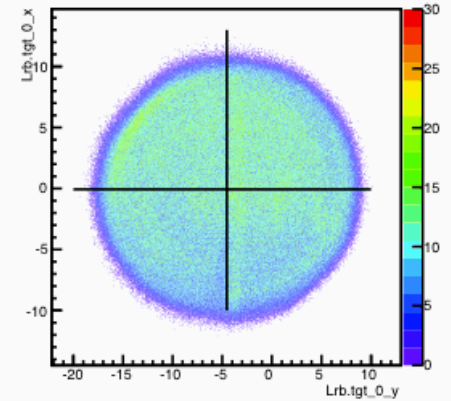
Run 5196– dummy



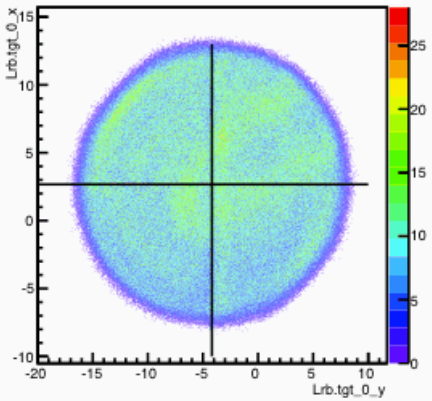
Run 5199– mat 14



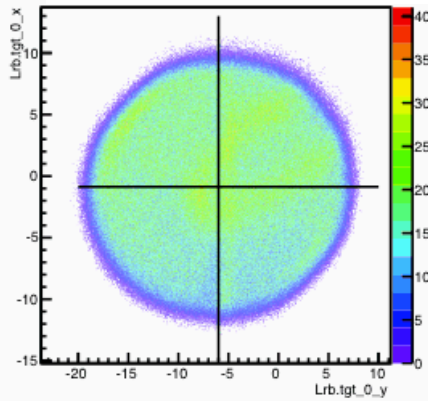
Run 5264– mat 14



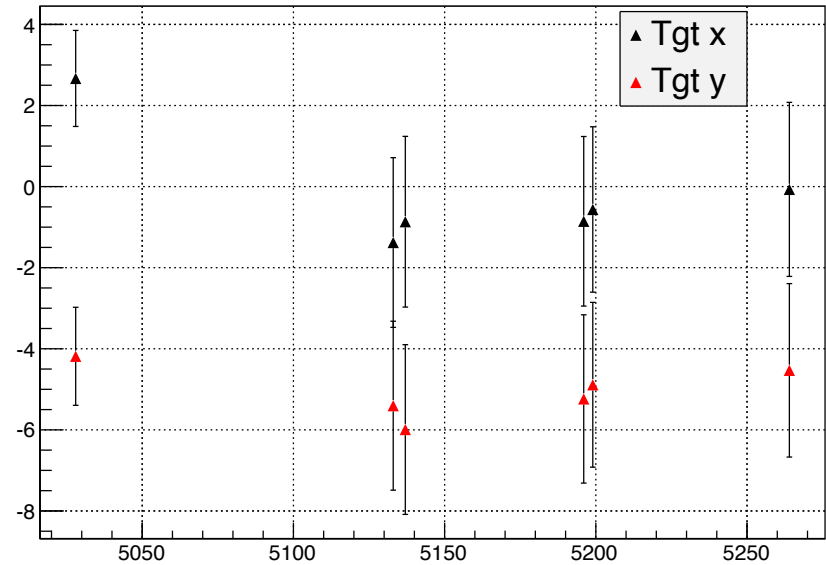
Run 5028 – dummy



Run 5137 – dummy



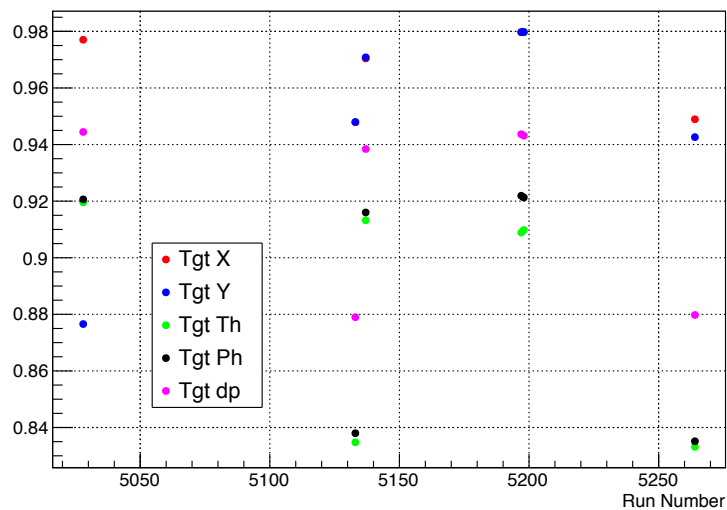
Beam Position



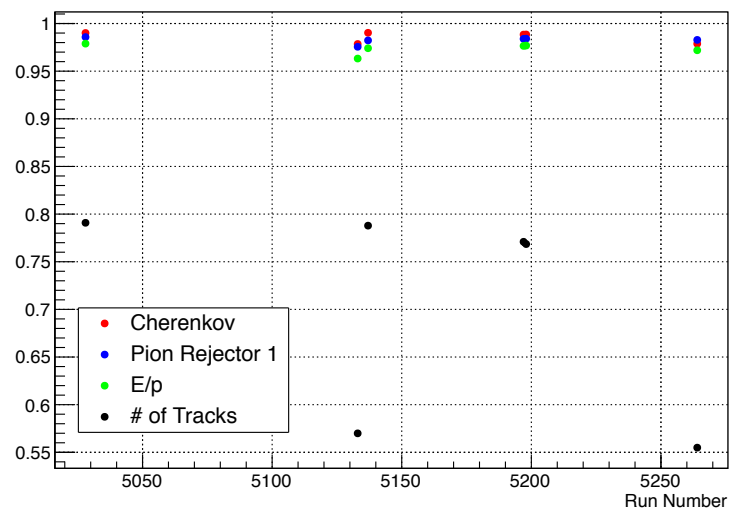
Run #

Effect of Cuts

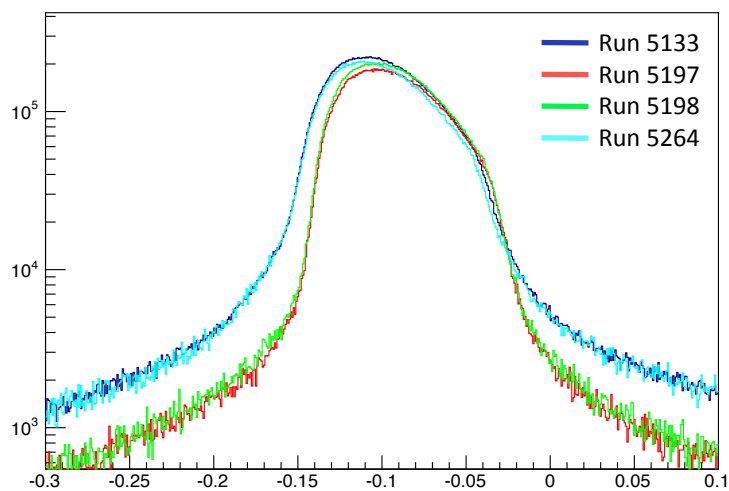
Target Plane Cuts



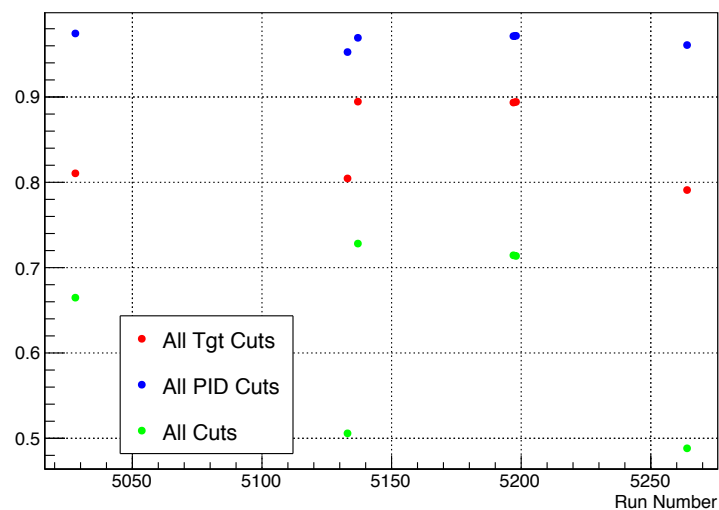
PID & # of Track Cuts



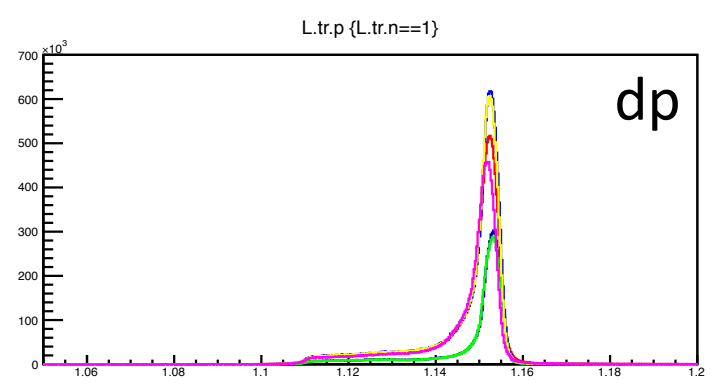
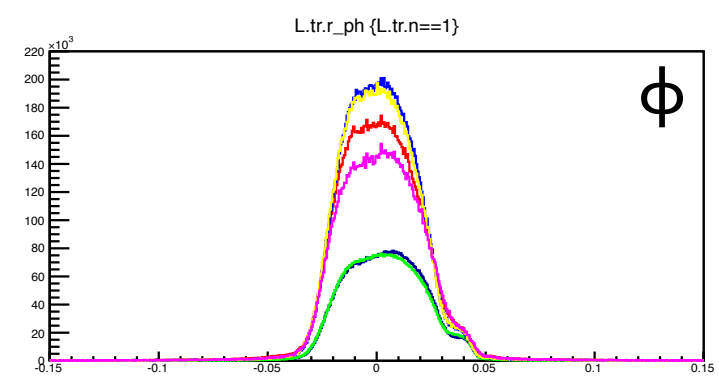
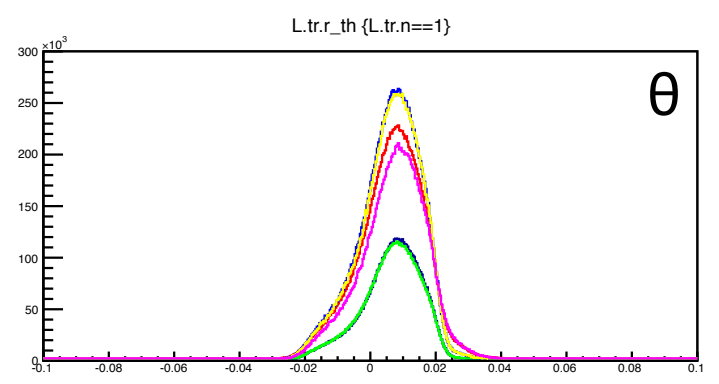
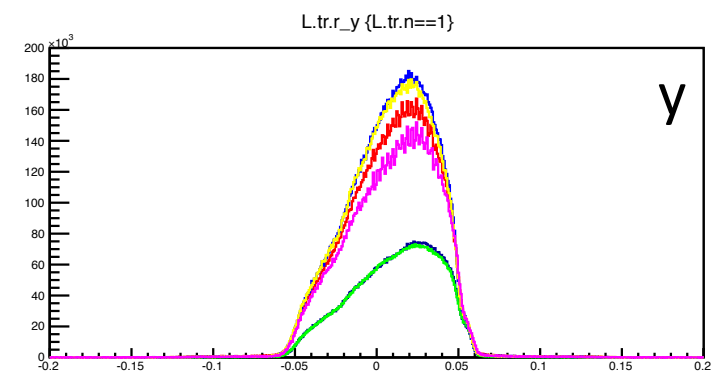
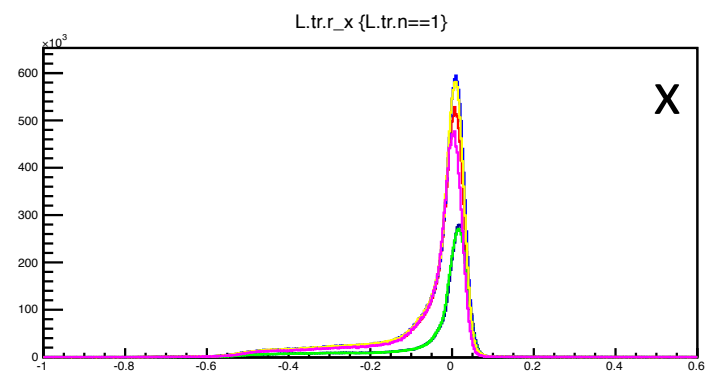
L.rec.th



Combined cuts



Focal Plane



- 5028
- 5133
- 5137
- 5197
- 5198
- 5264

Normalization Constants

Mysql

Run	Charge	LT	Cer Eff	PR Eff	Trig Eff	MT Eff	ps
5133	21.3065	0.982791	0.98961	0.998451	0.999675	0.609576	150
5197	3.27598	0.98407	0.999723	0.999387	0.999715	0.793361	45
5198	3.36181	0.889436	0.999725	0.999452	0.999708	0.791059	45
5264	9.05938	0.922331	0.998806	0.998848	0.99965	0.594306	109

Charge

Run	Mysql	Time (s)	Time (s)	Current	Calc.	ps
5133	21.3065	2203	507.7	43.93	22.30	150
5197	3.27598	168	166.6	19.47	3.24	45
5198	3.36181	168	166.5	19.99	3.33	45
5264	9.05938	177	176.1	51.04	8.99	109



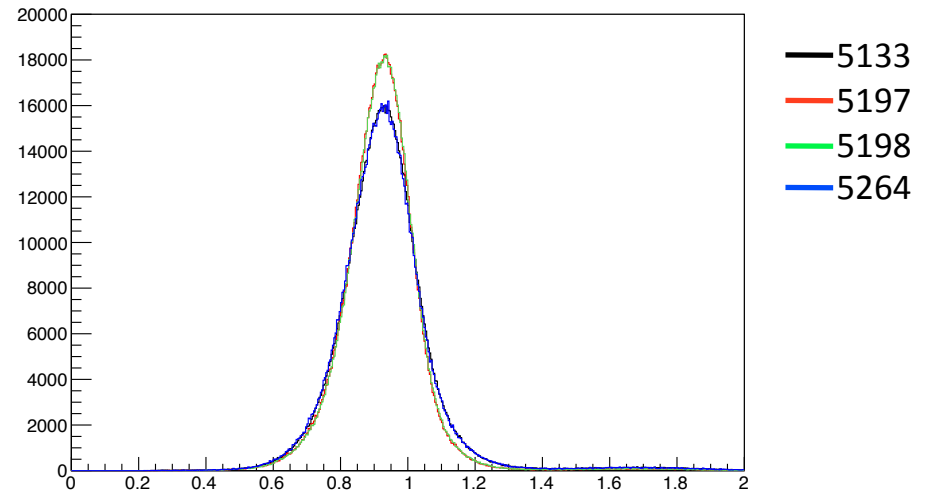
accounts for beam trips

Normalization Constants

E/p (pion rejectors)

Run	Mean	Sigma
5133	0.933	0.099
5197	0.929	0.086
5198	0.930	0.085
5264	0.930	0.099

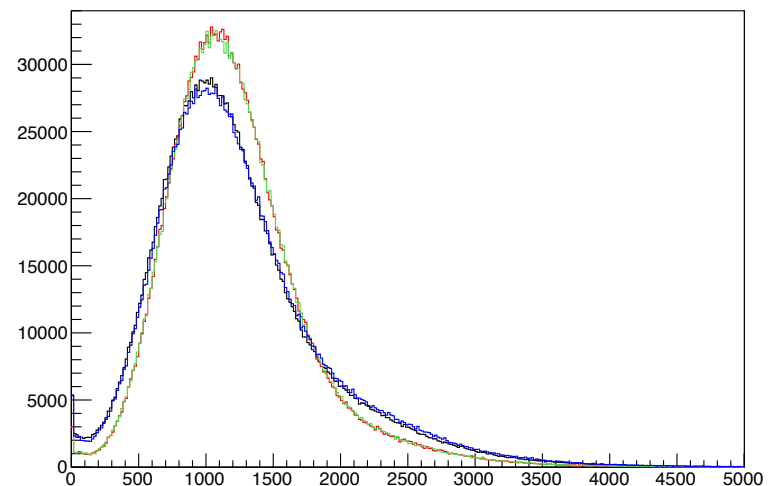
(L.prl1.e+L.prl2.e)/p0



Cherenkov Sum

Run	Mean	Sigma
5133	1016.9	406.6
5197	1079.1	398.9
5198	1077.3	404.4
5264	1019.5	431.8

L.cer.asum_c

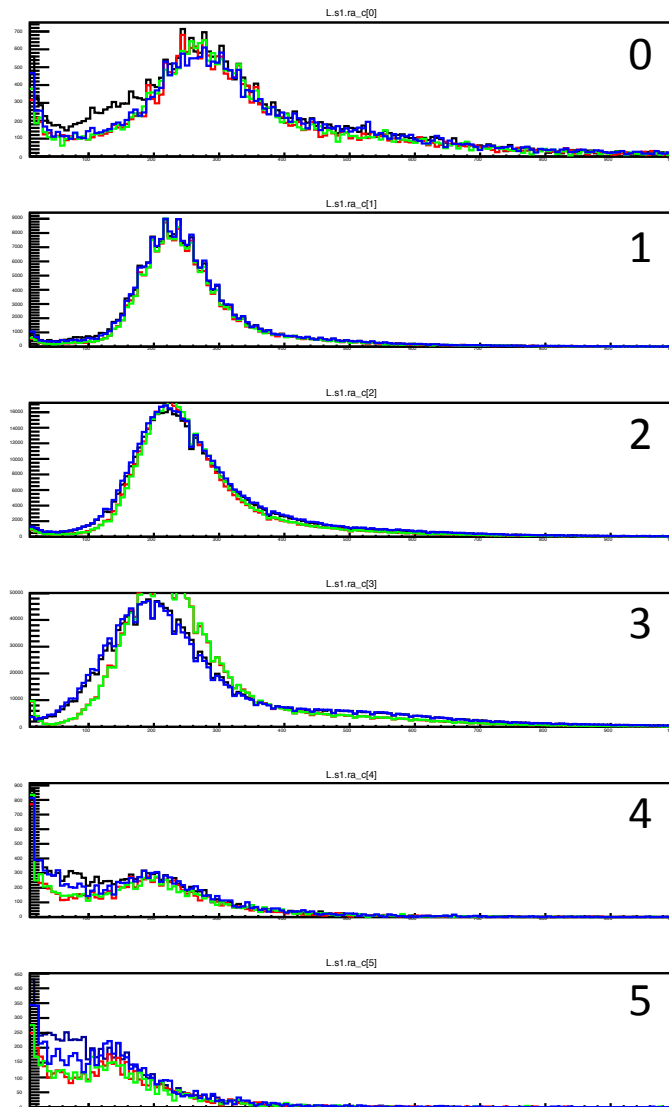
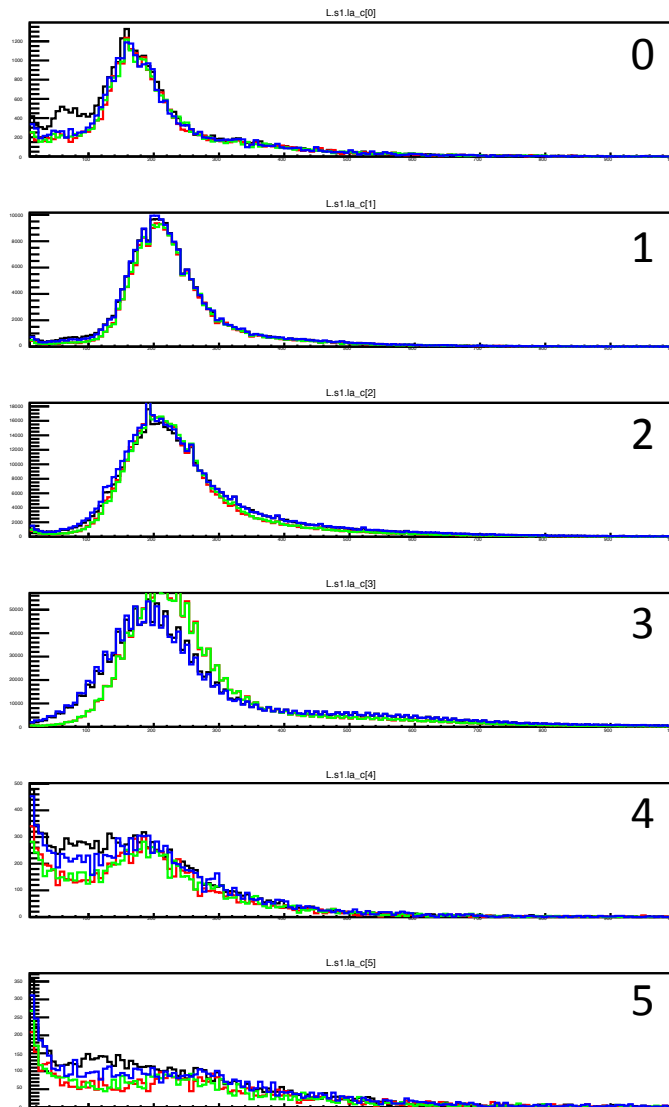


s1 Channels

Left PMTs

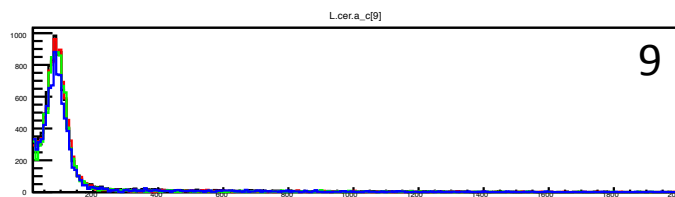
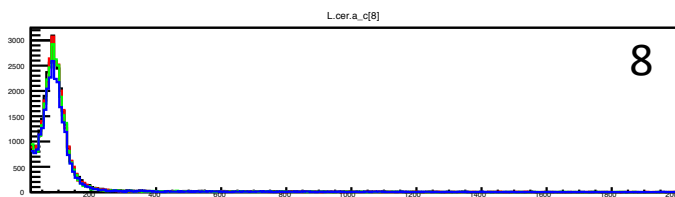
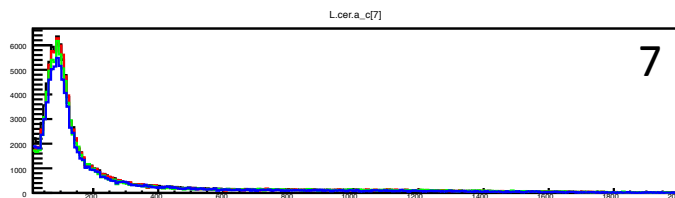
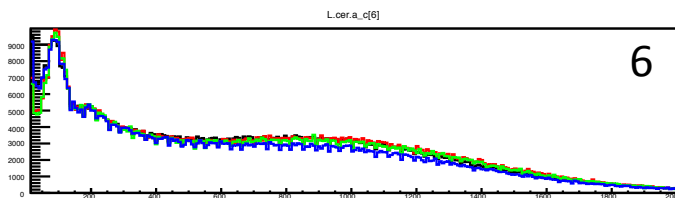
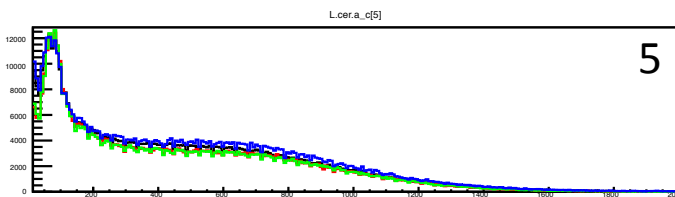
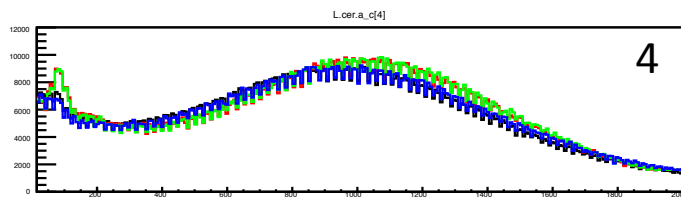
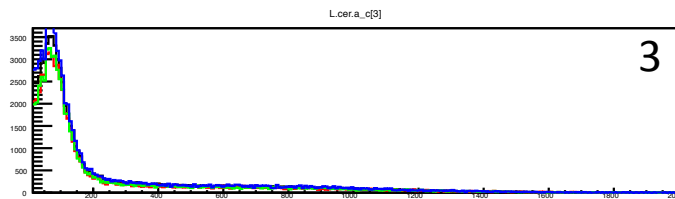
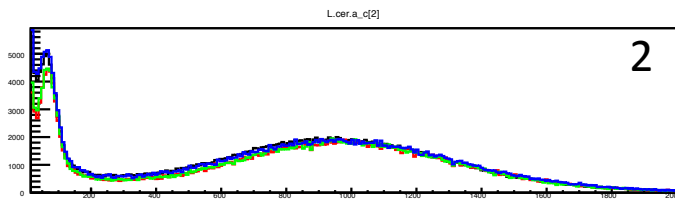
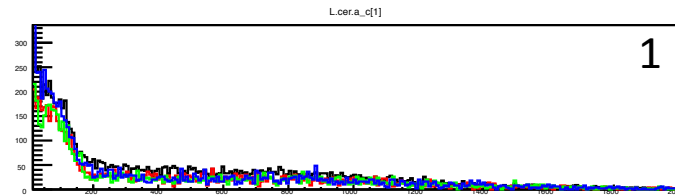
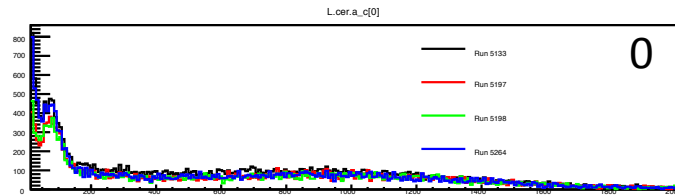
Right PMTs

— 5133
— 5197
— 5198
— 5264



Cherenkov Channels

— 5133
— 5197
— 5198
— 5264



1.1 GeV, 2.5T, Transverse

Run	Mat.	Prod/Dummy Ratio	Pf	Uncertainty	Current	ps
5133	14	1.68	0.210	4.0%	43.93	150
5197	14	2.55	0.487	4.4%	19.47	45
5198	14	2.50	0.471	4.7%	19.99	45
5264	14	1.49	0.150	5.4%	51.04	109