

BPM status

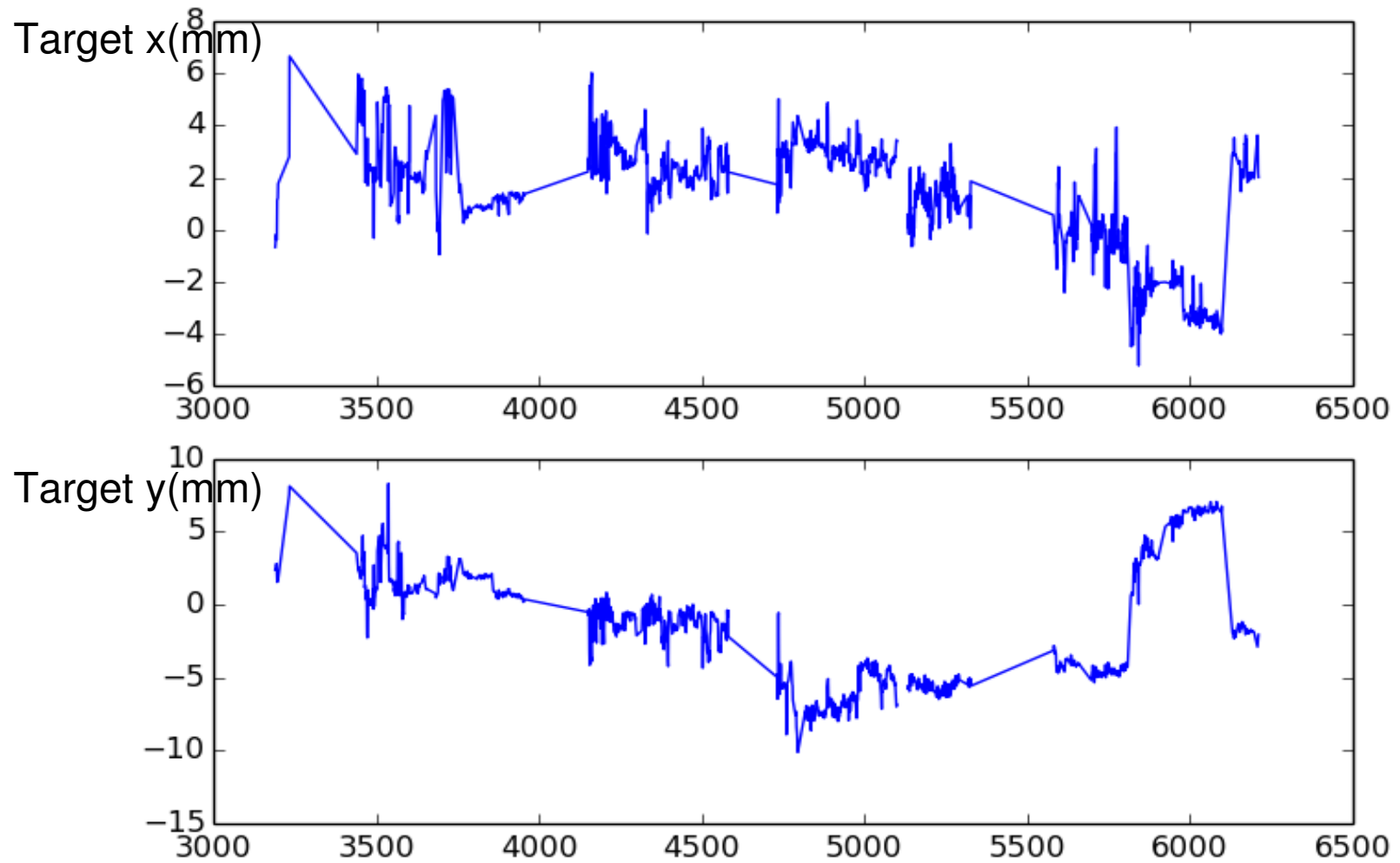
Pengjia Zhu

Status now:

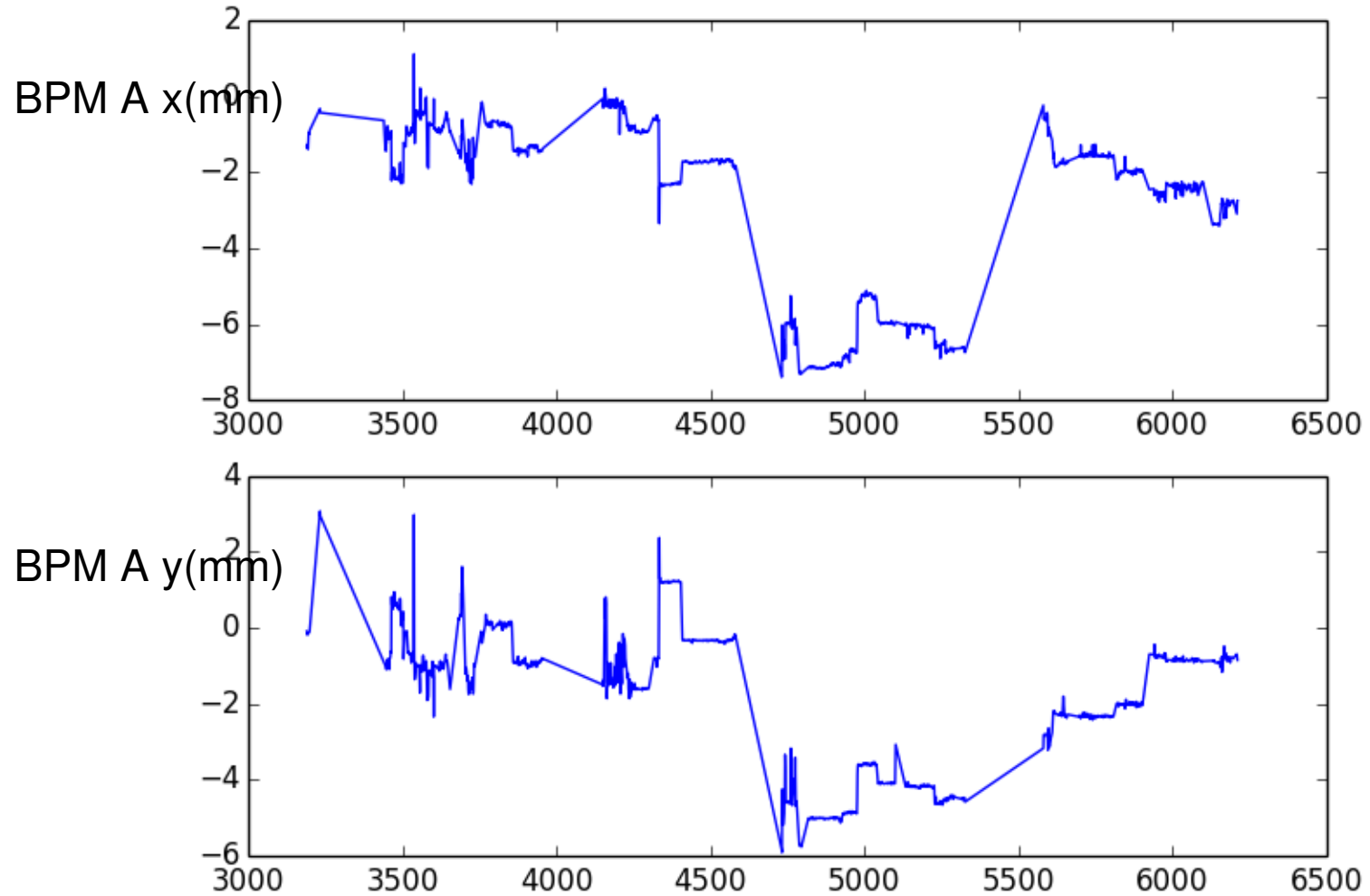
- Beampackage tools updated, dumped all of the bpm raw datas from rootfiles in volatile to a data pools, saved all of the calculated positions to the disks too.(raw datas for left arm already dumped, right arm is still dumping). Now people just need to insert the position to their own rootfiles.
- Calculated all of the positions for left arm, trying to check the calculated position of them to see to see if there have any weird change. mark the status of each run and calculate the uncertainty of them. Will publish to Elog when I think I'm finished.
- A new database for the average position for each run is built for quick checking, and a script tool to get it.
- All of the bpm jobs will be finished in a short time.

backup

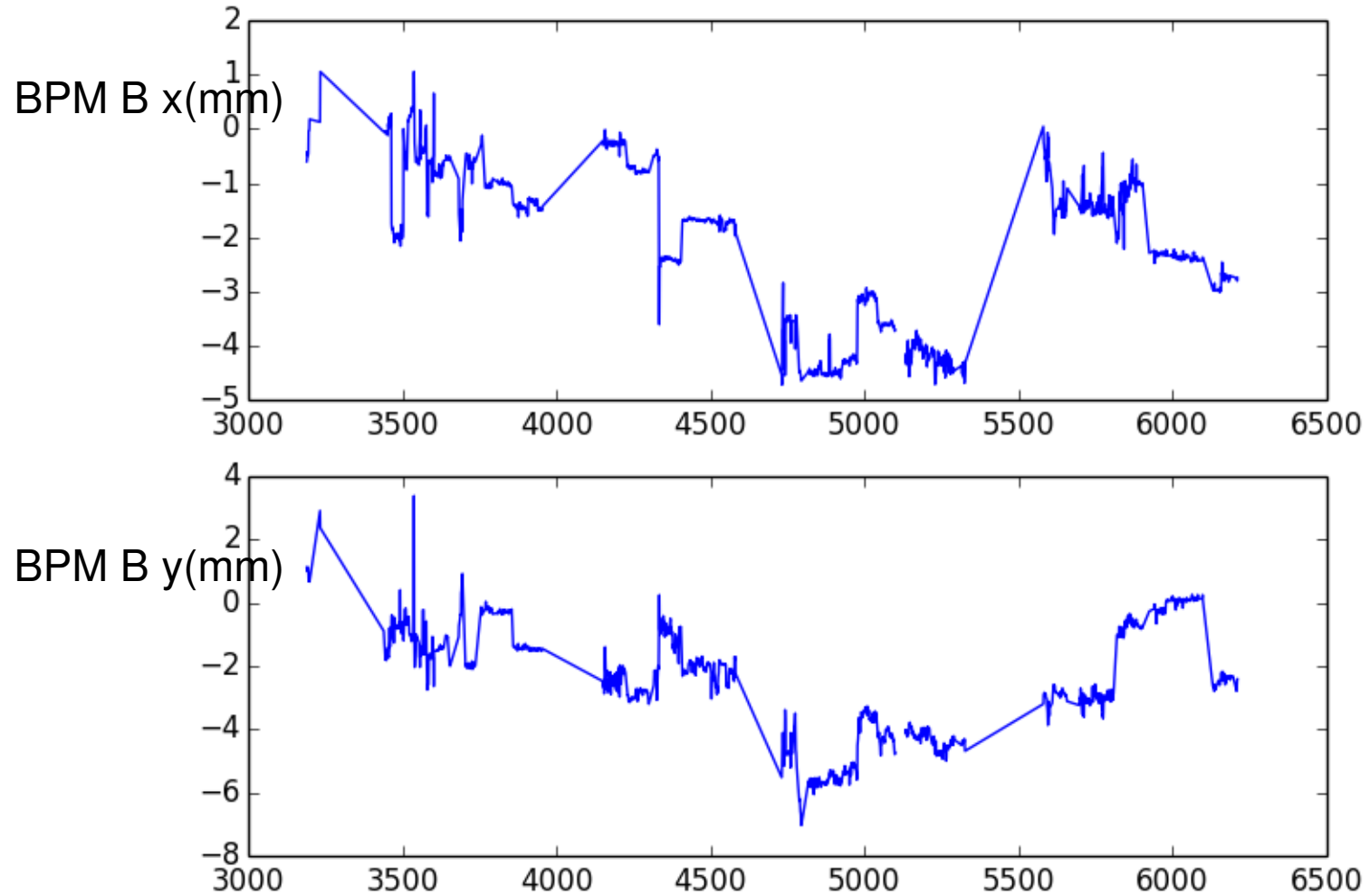
Positions for all of production runs during experiment



Positions for all of production runs during experiment

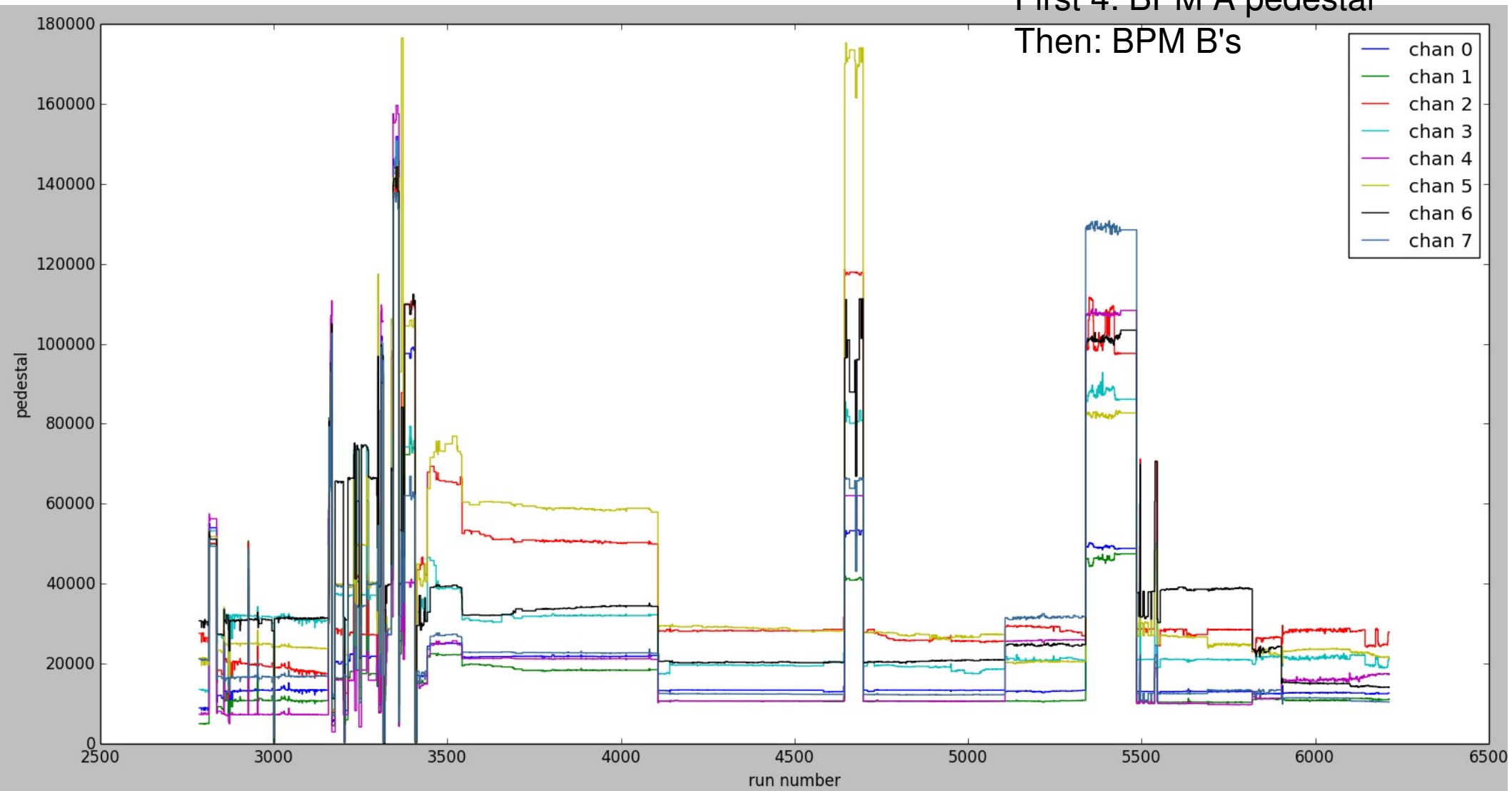


Positions for all of production runs during experiment



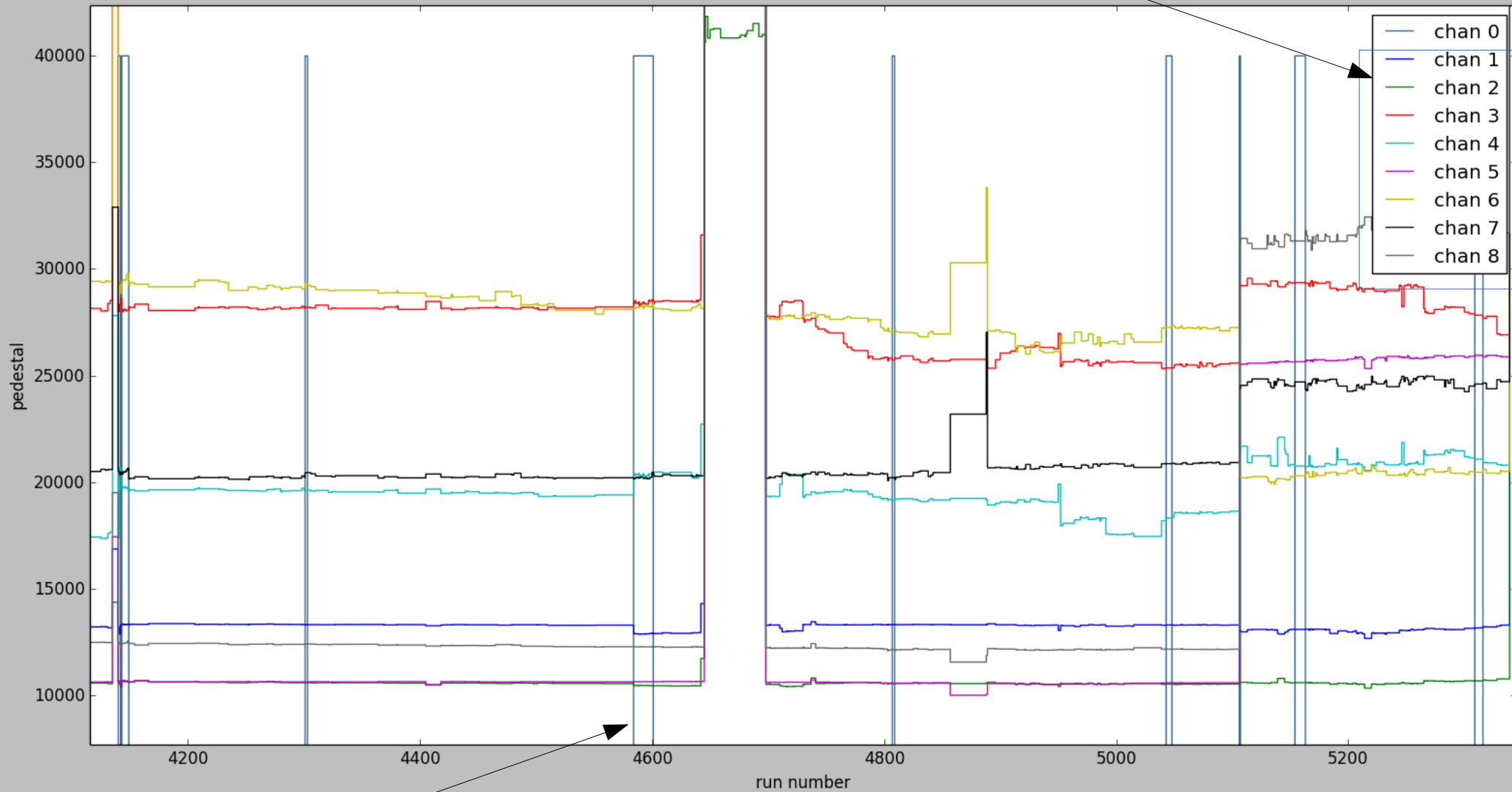
Uncertainty during experiment

Eight channels
First 4: BPM A pedestal
Then: BPM B's



Uncertainty during experiment (one period)

Eight channels



High means true pedestal run without current
Low means during beam trip

