

Run Coordinator Report, 4 - 11 March, 2015

Hall A Weekly Meeting

Nickie Hirlinger Saylor

Stony Brook University

10 March, 2015

Wednesday, 4 March, 2015

Thursday, 5 March, 2015

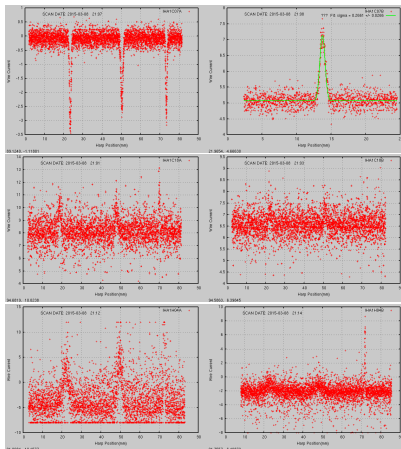
- No CW beam

Friday, 6 March, 2015

- Initially no CW beam due to vacuum issues.
- Some attempts at 22:25 to deliver CW.
- Only tune beam was established.

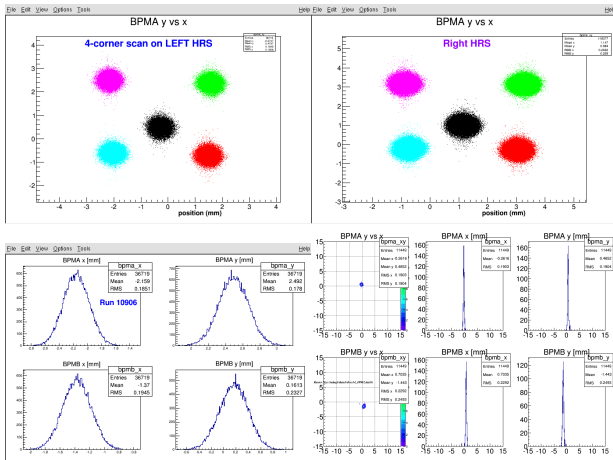
Saturday, 7 March, 2015

- CW is established around 14:00, at around 9.5 GeV.
- Beam line commissioning begins.
- Target ion chamber calibration was started by $MCC < 5\mu A$. Some work left to be done $> 5\mu A$
- Problems with harps reported.



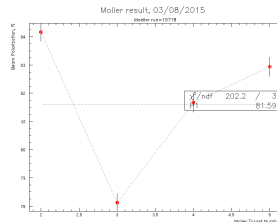
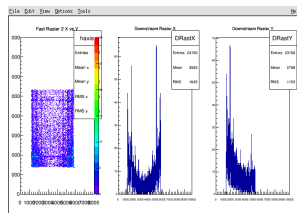
Saturday, 7 March, 2015, continued

- B. Michaels performs BPM calibration, and four-corner "bull's-eye" study. Implemented by Luke M.
- BeO Visual confirmed
- Carbon Hole study begins



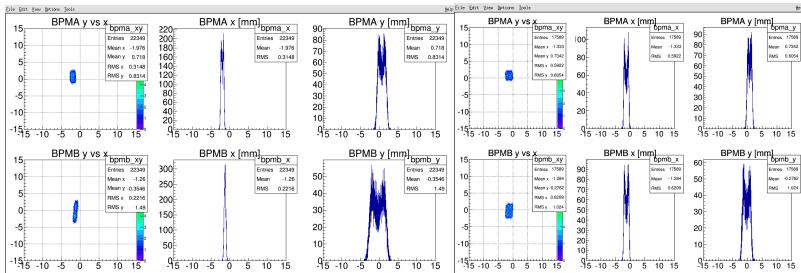
Sunday, 8 March, 2015

- Carbon Hole study continues
- Arc energy estimate performed by Doug H.: 9574.9 MeV
- Møller group comes and performs calibrations and optics study.
- Beam energy fluctuation was in range 9573 - 9574 MeV.
- They obtain a polarization measurement of 81.59
- After Møller group leaves:
 - Ran harps scans again (problems persist)
 - FFB not working properly
 - Current lock not working
 - Position locks on but beam position fluctuating
 - Beam centering program continues



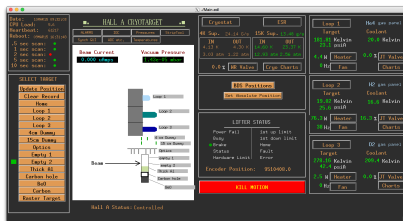
Monday, 9 March, 2015

- Møller quad issues: raster looks different before and after Møller study.



Monday, 9 March, 2015, continued

- Many problems with target gui. Carbon button was broken. Some buttons moved the target to incorrect encoder positions. Target group has already fixed this.
- MCC needed access to BSY, and SLinA.
- A-laser, 3-beam setup, harps, mirror removal near 1C12 BLM.
- Target cooldown.
- The hall was in controlled access - hoped for beam.
- Beam did not come...



Tuesday, 10 March, 2015

- Beam was never returned. Better communication between MCC and halls would be desirable.
- MCC is conducting beam studies. They anticipate being done during swing shift.
- We will remain in controlled access until they are ready to send beam.
- If three beam operation is not achieved, Halls A and D may be in competition for the beam.
- THEN, we plan to do the following:
 - We plan to retry harp scans after MCC repairs.
 - We will cross-calibrate BPM after harp scan.
 - We will redo carbon hole beam centering studies since the target is cold.
 - Also look at the special "empty" /long "raster" target.
 - Detector checkout and DVCS data taking.

Wednesday, 11 March, 2015

- The next Run Coordinator is Mark Jones.

A Note From JLab Department of Propaganda: Shift Takers Needed!



Uncle Owl wants YOU!
For Hall A Shifts!
(Especially owl shifts)

W, Mar. 11	SL: Mongi Dlamani TO: Xinqu Yan 3H: Xinqu Yan	SL: Zhihong Ye TO: Todd Averett	SL: Mitra Hashemi TO: Shabestari 3H: Mitra Hashemi Shabestari
Th, Mar. 12	SL: Xinqu Yan TO: Xinqu Yan 3H: Xinqu Yan	SL: Jian-Ping Chen TO: Todd Averett	SL: Xinqu Yan TO: Xinqu Yan 3H: Xinqu Yan
F, Mar. 13	SL: Xinqu Yan TO: Xinqu Yan 3H: Xinqu Yan	SL: Todd Averett TO: Nicholas Hirlinger Saylor	SL: Dasuni Adikaram TO: Dasuni Adikaram 3H: Dasuni Adikaram
Sa, Mar. 14	SL: Mitra Hashemi TO: Shabestari 3H: Mitra Hashemi Shabestari	SL: Simon Circa TO: Nguyen Ton 3H: JieLiu	SL: Xinqu Yan TO: Xinqu Yan 3H: Yuxiang Zhao
Su, Mar. 15	SL: Mitra Hashemi TO: Shabestari 3H: Mitra Hashemi Shabestari	SL: Simon Circa TO: Dien Nguyen 3H: Dien Nguyen	SL: Mitra Hashemi TO: Shabestari 3H: Yuxiang Zhao

Owl shifts and swing shifts are often empty, or only have a 3H, up to the last moment!
We need target operators 24/7 since the target is cooled.