

# **Hall A Run Coordinator Report**

15<sup>th</sup> -21<sup>st</sup> April 2015

---

Kalyan Allada  
MIT

# Wednesday - Tuesday

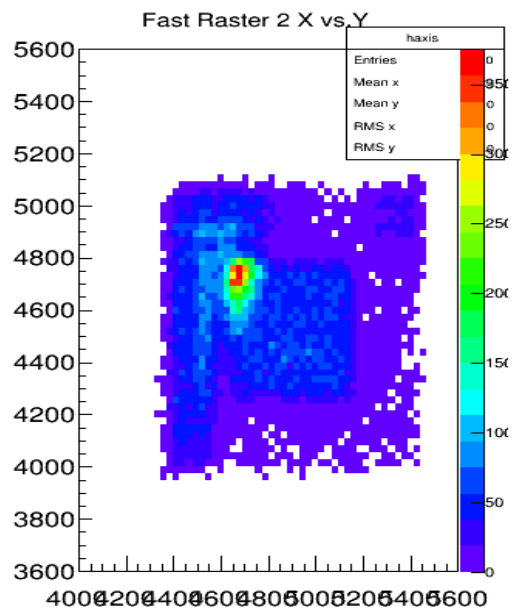
---

- CHL pump down was completed by Wednesday
- Machine setup began on Thursday
- Multi-hall setup did not go well during the weekend - only Hall B got beam
- One of the Moller quad had water flow fault - turned out to be a broken wire in the flow sensor connector
  - Fixed on Sunday (DC PS group and Jack Segal)
- Experts worked on Monday to try and setup optics for Hall A and B
- Finally beam was delivered to the Hall on OWL shift on Tuesday
- Started with 5uA to do beam centering/BPM/Harp runs

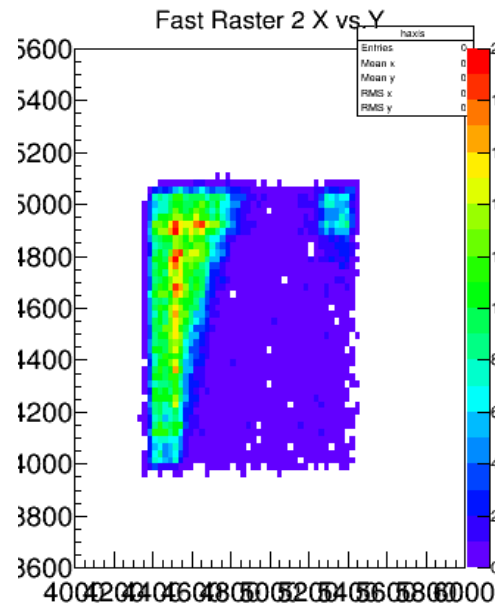
# Tuesday Owl Shift: Beam Centering

- Shift crew had difficulty in centering beam using carbon hole target
- May have been mistaken the frame with carbon hole
- Target ion-chambers tripped when changing beam positions
- Will repeat the procedure again today
- Raster size seem fine (agrees with BPM readout)

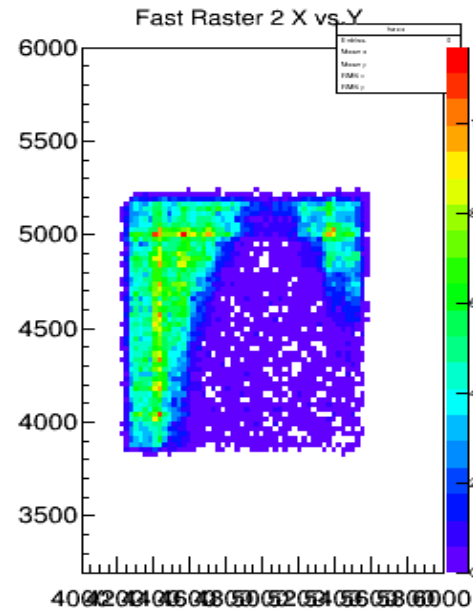
2x2 raster



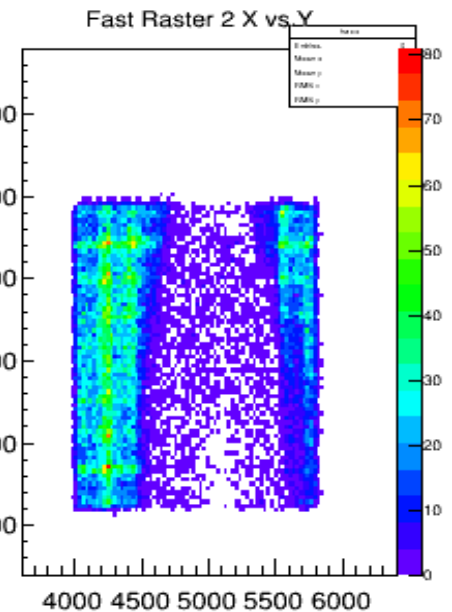
4x4 raster



5x5 raster



7x7 raster



# Tuesday Owl shift / Other Plans

---

- Harps 1H04A and 1H04B did not work last night
  - harps doesn't move – maybe an ioc supply issue
- SOS quad tuning: Did Q1 current scan runs with optics target
- Took some trigger efficiency runs with R-HRS
- **Plans for today:**
  - MCC is setting up RF separation for Hall D right now
  - Did a target ion-chamber calibrations this morning (pending cryo target)
  - Redo carbon hole centering with small raster (2x2 or 3x3)
  - BPM/harp runs. If Harps don't work then just use averaged positions from EPICS
- **Plans for tomorrow (Day):**
  - Target cooldown, HRS-L polarity change to negative
  - Install sieve slit, move HRS-R to smallest angle possible (45 deg?)
  - L-HRS Q1 cooldown going very very slowly
  - Like to be in controlled access if possible