

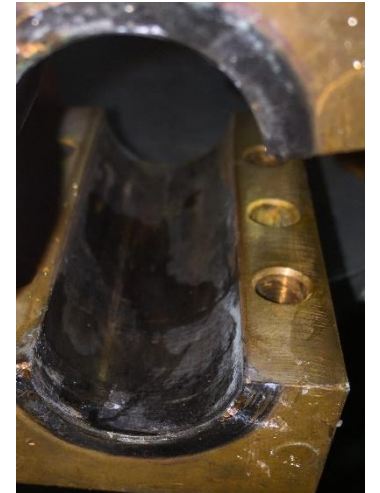
# Run Coordinator Report – 10/26/16

- ❑ Report for the week of 10/19-10/26
  
- ❑ Program:
  - E12-07-108: GMp running
  
  - DVCS re-installation
  
- ❑ Run coordinator: Tanja Horn (CUA)

# Significant Events Last Week

## ❑ RHRS recovered on Thursday, 10/20

- Leads of right dipole were oxidized – Hall A technical staff cleaned the surfaces, installed thicker copper foil to build up shims (see halog entry #3430984 for more details)



## ❑ Energy measurement, controlled access, and raster trip on Saturday, 10/22

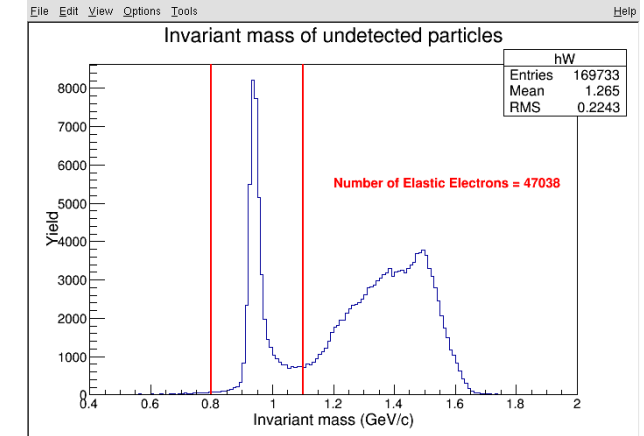
- Dispersive beam energy measurement gives 8.518 GeV (D. Higinbotham, entry #3431526) – consistent with achromatic measurement
- LHRS angle changes - there were many (Hall A techs working under RWP + Radcon)
- Power cycle BCM digital receiver crate (D. Mack)
- SBS/SoLID detector test stand cable delays, fan installation, power cycling of HV crates, hallavme12 dead (V. Sulkosky)
- Vertical raster trip fixed in hall – 4V power supply had died (B. Gunning, entry #3431616)

# 4-Pass Program Overview

Setting Q2 #events spectrometer Status

---

K4-12	12.1	~11k (10k expected)	RHRS	completed
K4-11	11.2	~19k (40k expected)	LHRS	completed
K4-10	9.8	~47k	LHRS	completed
k4-9	9.0	~39k	LHRS	completed

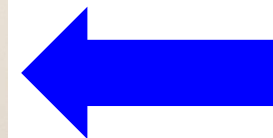


- ❑ **Targets:** 15cm LH2 and dummy, carbon hole
- ❑ **Beam condition:** good, on average got ~6hrs/shift
- ❑ **Hall A condition:** high radiation levels
- ❑ **Logistics:** spectrometer angles have to be changed in the hall – some angles require pointing surveys
  - Excellent support from Hall A techs and Radcon

# Significant Events This Week for GMP: more angle changes

- Short controlled Accesses for spectrometer moves

	LHRS	RHRS	
Sat .	39.9	48.75	Shisa Survey
Monday : ~8AM	30.9	~	RHRS at 48.75
Tue: 7:00AM	30.9 [Pass 3]	55.5	
Tue in 4PM	44.5°	55.5	LHRS 30.9
Wednesday : ~8AM	37.0°	55.5	
~4PM	24.25°	55.5	
Thursday	24.25	55.5	CHRS/RHRS



**We are here now**

Note: to optimize we change to 24.25deg at ~1pm first, then to 37 deg at 6-7pm

# 3-Pass Program Overview

Setting	Data collected	spectrometer	Status
K3-6	~49k	LHRS: 30.9 deg	complete
K3-8	~18k	LHRS: 44.5 deg	In progress
K3-4		LHRS: 24.25 deg	Not yet started
K3-7		LHRS: 37 deg	Not yet started
K3-9		RHRS: 55.89 deg	In progress

- Requires two more angle changes on Wednesday: short accesses in Hall A supported by RadCon
- Require surveys of both LHRS and RHRS on Thursday morning

# Significant Events This Week for DVCS

- Thursday morning 8am: restricted access for changeover
- Re-installation of the calorimeter and surveys
- Setting of Wien angle for 4-pass running
- Setting up for initial elastic calibrations over the weekend
- Compton tests

# Hall A DVCS runplan

## Winter runplan in a nutshell:

- 3-pass beam (~1 day): DVCS calorimeter calibration
- 4-pass beam (~3.5 weeks): Production at ~8.8 GeV
- 5-pass beam (~3.5 weeks): Production at ~11 GeV
- 3-pass beam (~1 day): DVCS calorimeter calibration

## 3-pass runplan (~ 1 day):

- 5-10 uA beam on LH2
- Frequent (every ~2h) escorted accesses to the Hall for configuration changes
- (Dispersive) beam energy measurement preferable, but not essential
- No polarization needed

## Production:

- 20 uA at 4-pass and (later) 5-pass
- Maximum polarization needed
- Moller measurement (at 4 and 5 passes)
- BCM calibration every ~2-3 weeks (up to 30 uA)
- (Dispersive) beam energy measurements preferable, but not essential

General requests: FFB and position locks