

# RC Report November 7<sup>th</sup> -13<sup>th</sup>

Jason Bane  
University Of Tennessee

Hall A Weekly Meeting  
November 13<sup>th</sup> 2018

# Summary for the week

- **11/7 Wed ~63% ABU**
  - CODA Crashes
  - MCC- HV drops, and other small issues
- **11/8 Thr ~69% ABU**
  - DAY - “Best shift in 12 GeV years!” B. Wojtsekhowski
  - 1L17 tuning, HV drops, issue with 2L24
- **11/9 Fri ~69% ABU**
  - 2L10, 1L23- a few hours

# Summary for the week

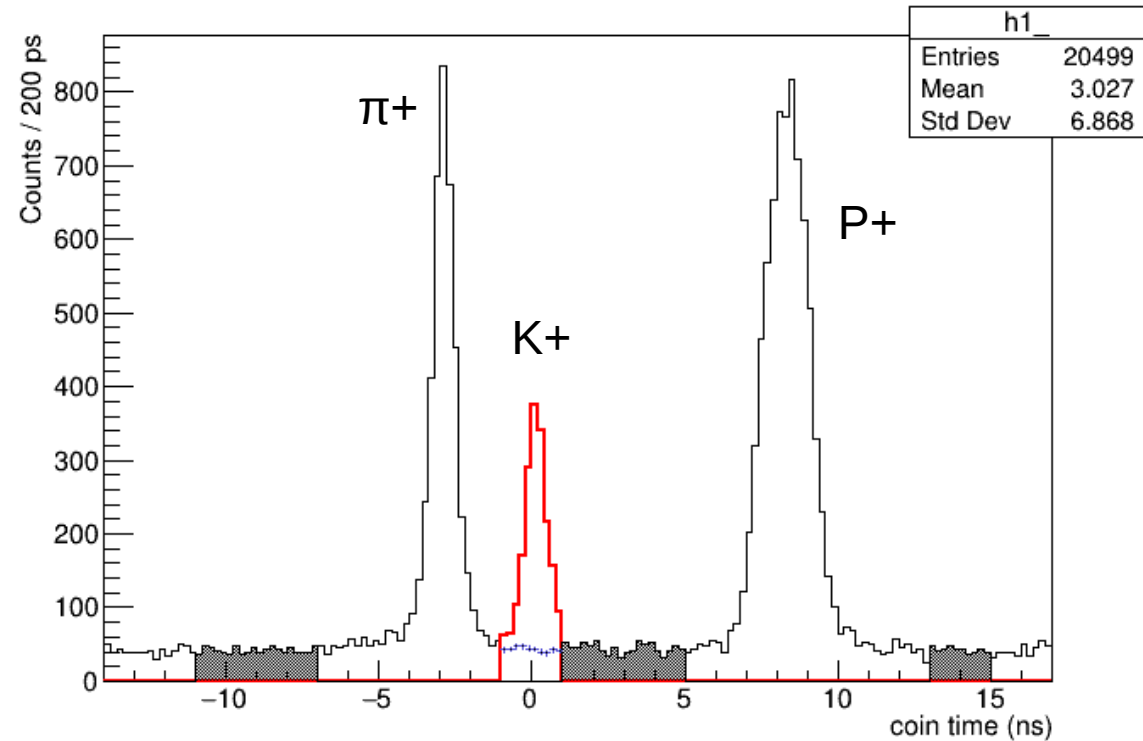
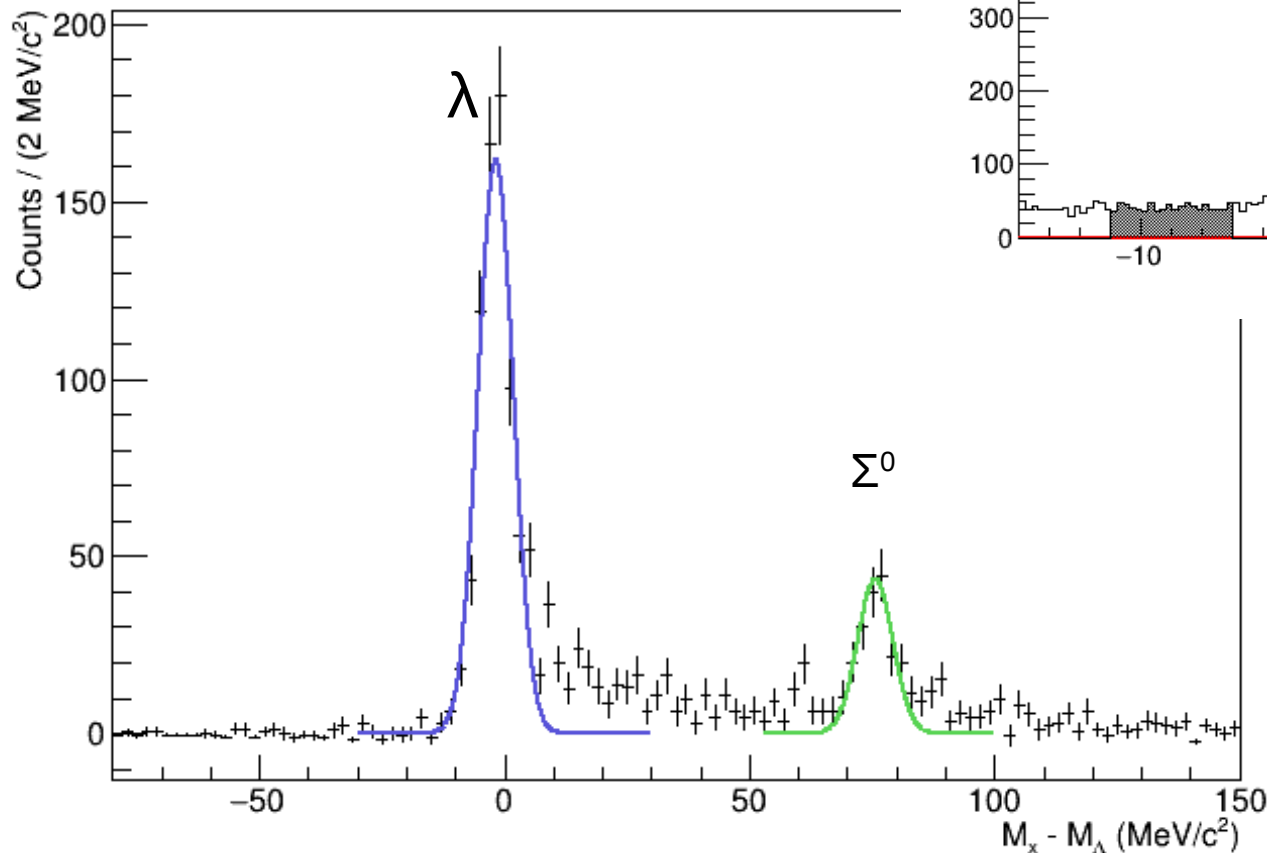
- **11/10 Sat ~ 33% ABU**
  - 1L23 Dropped HV lost about 9 hours , 1L24 1 hour
- **11/11 Sun ~ 57% ABU**
  - 1L24 repeated trips, 1L25 & 1L26 HV lost ~2 hours
- **11/12 Mon & 11/13 owl ~21% ABU / 64 % of owl**
  - Recovery 8 hours, S. linac drops PSS\*2, FSD faults( starts at 14:41 back around 04:30 )
  - ~03:30 11/13 Truck ramp door opened
    - Recovery of about 1.5 hours

# Summary for the week

$N_{\{K^+\}} = 1060$

$N_{\{\Lambda\}} = 730$

$N_{\{\Sigma^0\}} = 200$



# Thanks!

## Thank you!

- Kaon Group
- Entire Tritium Army
- Tech staff and Target group
- Hall A Collaboration
- MCC
- Many more!!
  
- Good luck to Shujie Li