

Halla RC Report

Caryn Palatchi

July4-July9

Summary for this week

PREX

- Warm target ladder de-install, reinstall without water cell
- Compton work post-power outage was performed
- A few hours of beam with 50uA on natural lead and 65uA on thick carbon to perform some commissioning

Daily Activities

7/3: Wednesday

Warm target ladder removed, reinstalled. PC power hot checkout. Compton work

7/4: Thursday

Pump Down, Parity controls trouble shooting, Compton work

7/5: Friday

Target cooldown, final checklist, magnet ramp, Compton work, S0's replaced

7/6: Saturday

70uA established to dump, then no beam, B beam tuning until power outage in SL

7/7: Sunday

½ hour - Establish beam on C-Hole target 20nA CW – determined raster

7/8: Monday

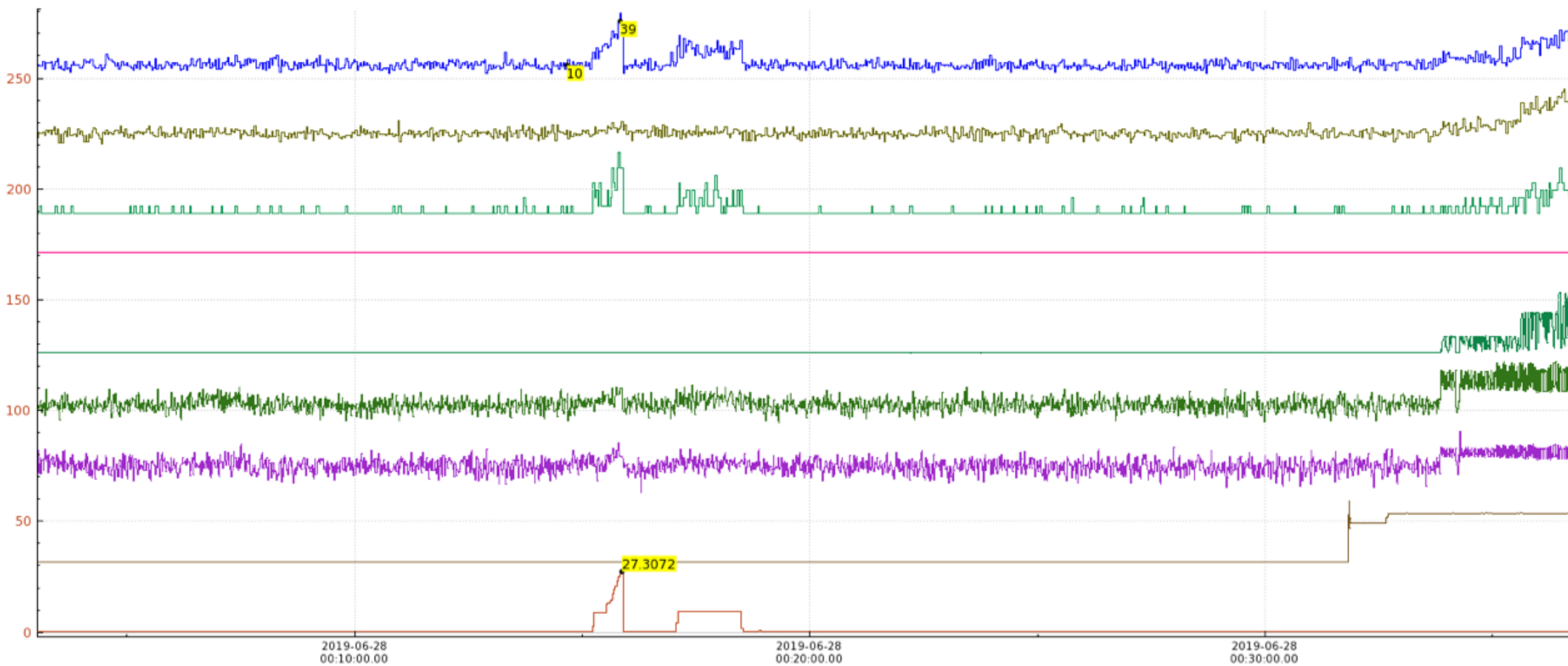
Redid C-Hole raster size, Production CW on natural Lead and carbon, current calibrations, beam modulations, Compton rates observed, collimator T OK

7/9: Tuesday

Detectors counting mode

MyaPlot 6.0.1

Compton Background Rates

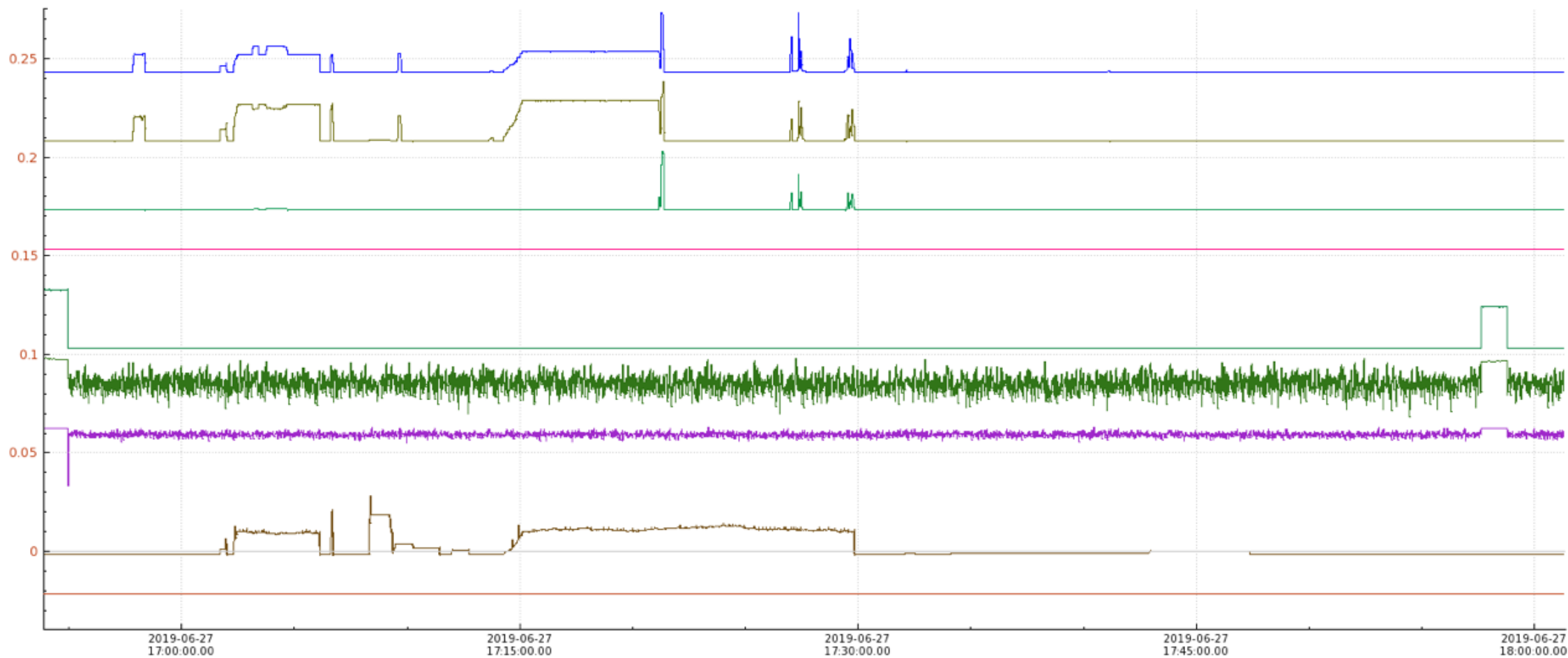


- []
- ComptonDSbg1
- ComptonDSbg2
- ComptonUSbg1
- ComptonUSbg2
- IBC1H04C.RC.R2 Hall A
- IPM1H04C.XPOS Hall A Cavity
- IPM1H04B.XPOS Hall A Cavity
- IPM2C21A.IENG Hall B
- ibcm1** Hall C

Y axis: linear auto tiled X axis: 10 minutes

MyaPlot 6.0.1

Compton Background Rates



ComptonDSbg1

ComptonDSbg2

ComptonUSbg1

ComptonUSbg2

IBC1H04CRCUR2

Hall A

IPM1H04C.XPOS

Hall A Cavity

IPM1H04B.XPOS

Hall A Cavity

IPM2C21A.IENG

Hall B

ibcm1

Hall C

2019-06-27
17:00:00.00

2019-06-27
17:15:00.00

2019-06-27
17:30:00.00

2019-06-27
17:45:00.00

2019-06-27
18:00:00.00

Y axis: linear auto tiled X axis: 15 minutes

Pending Activities

Priority** Finalizing Detector Alignment

- FFB
- Compton Commissioning
- Moller commissioning
- Assess PQB with Production data