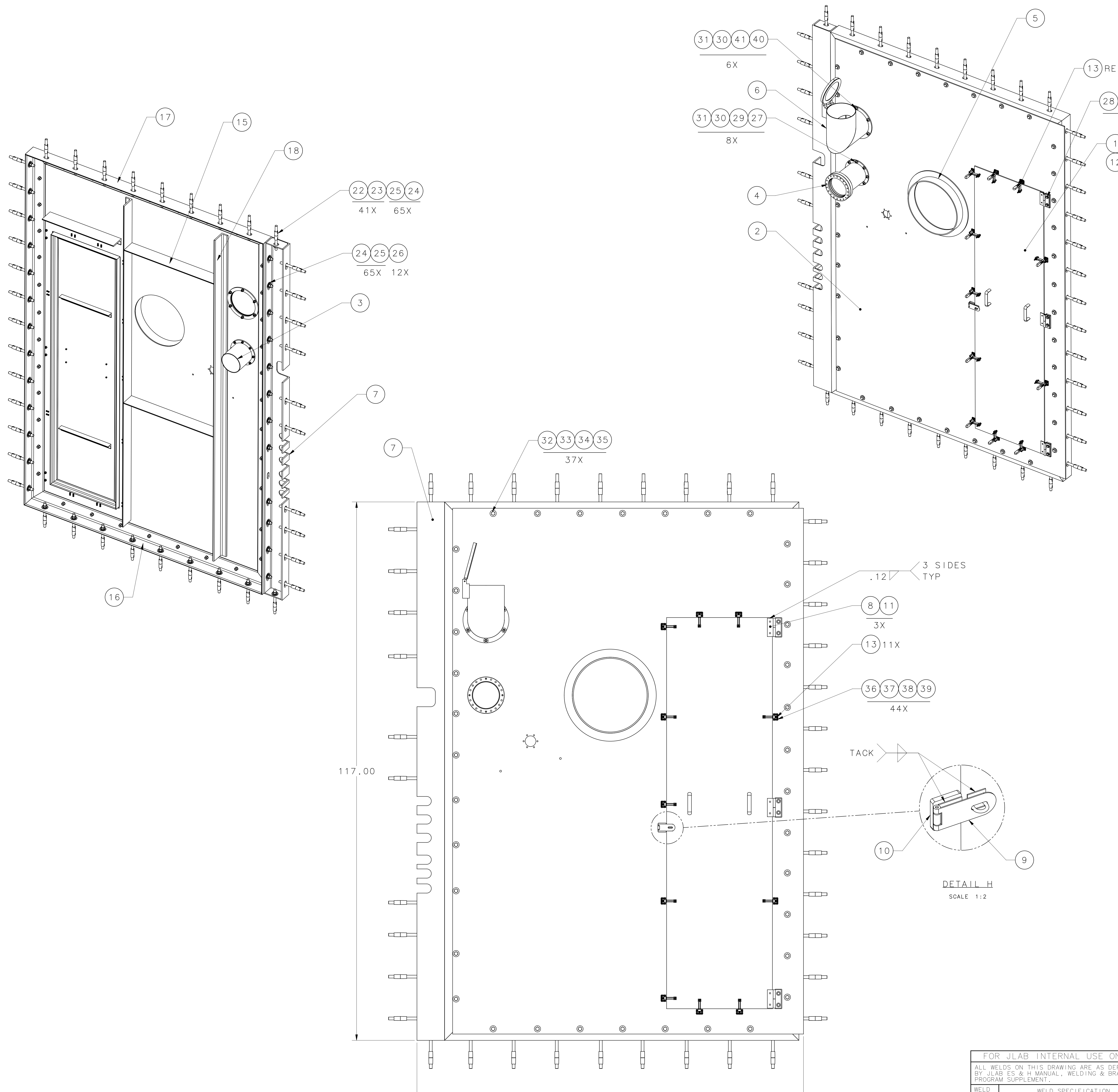


REVISION HISTORY				
ZONE	REV	DESCRIPTION	DATE	APPROVED
	A	CHANGED ALL HEX NUT MATERIAL TO SILICON BRONZE	7/29/14	

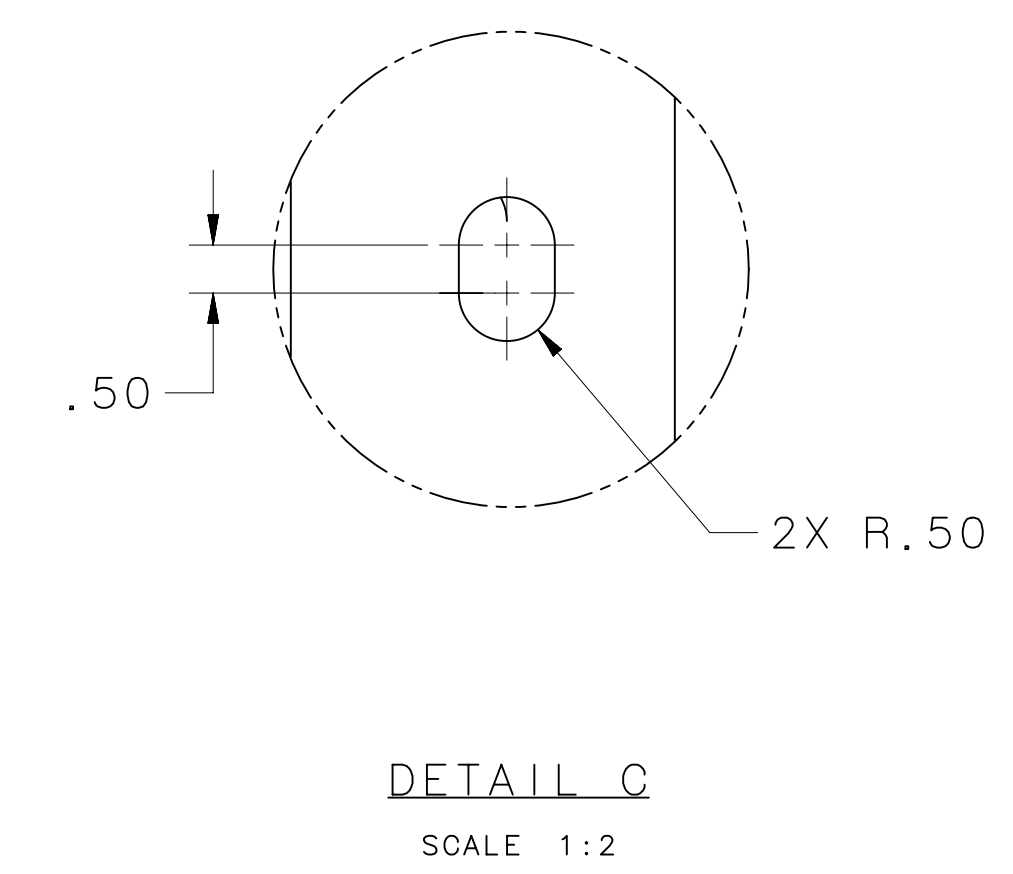
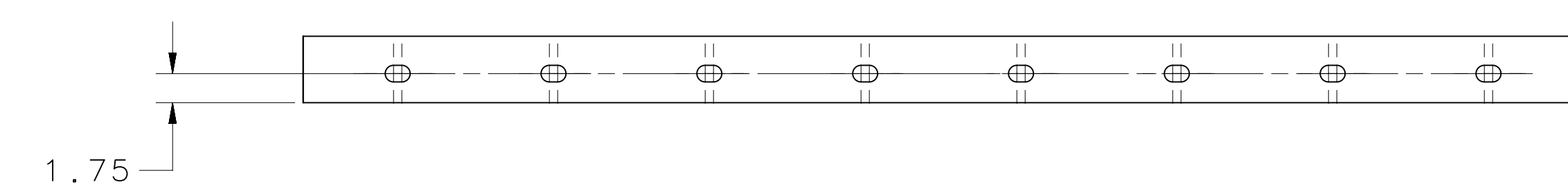
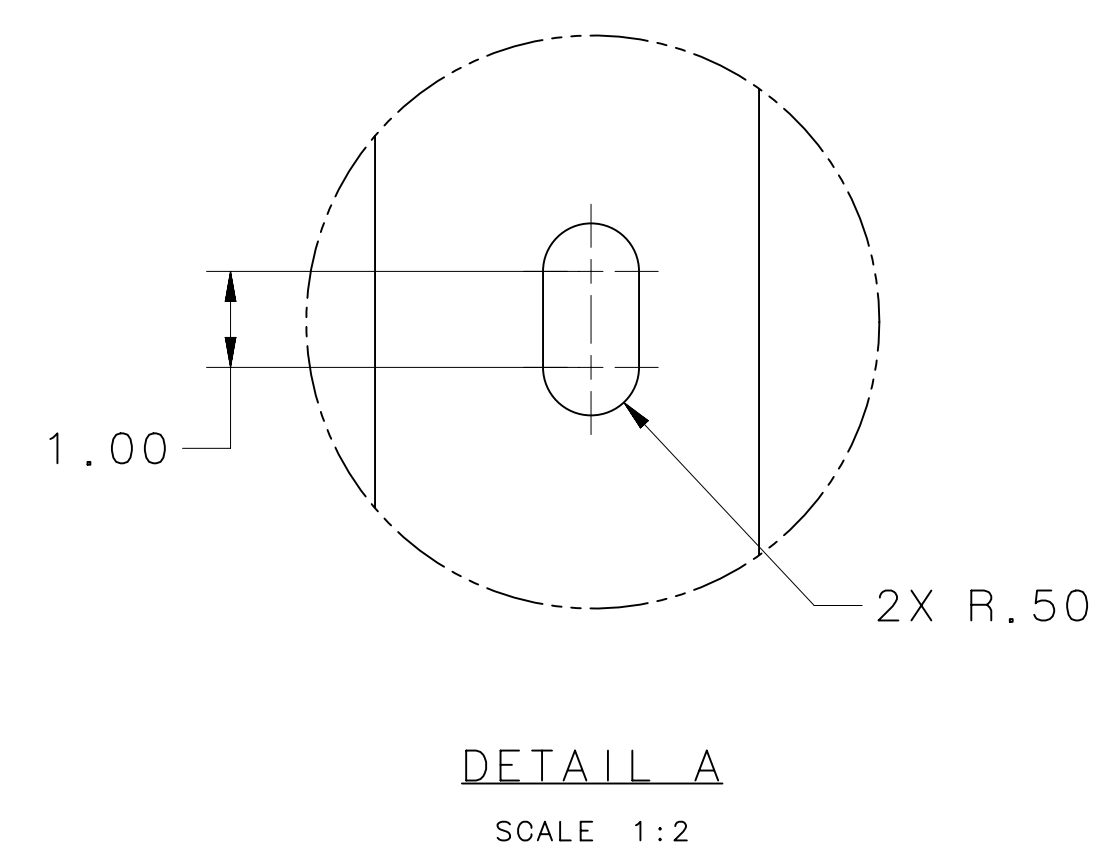
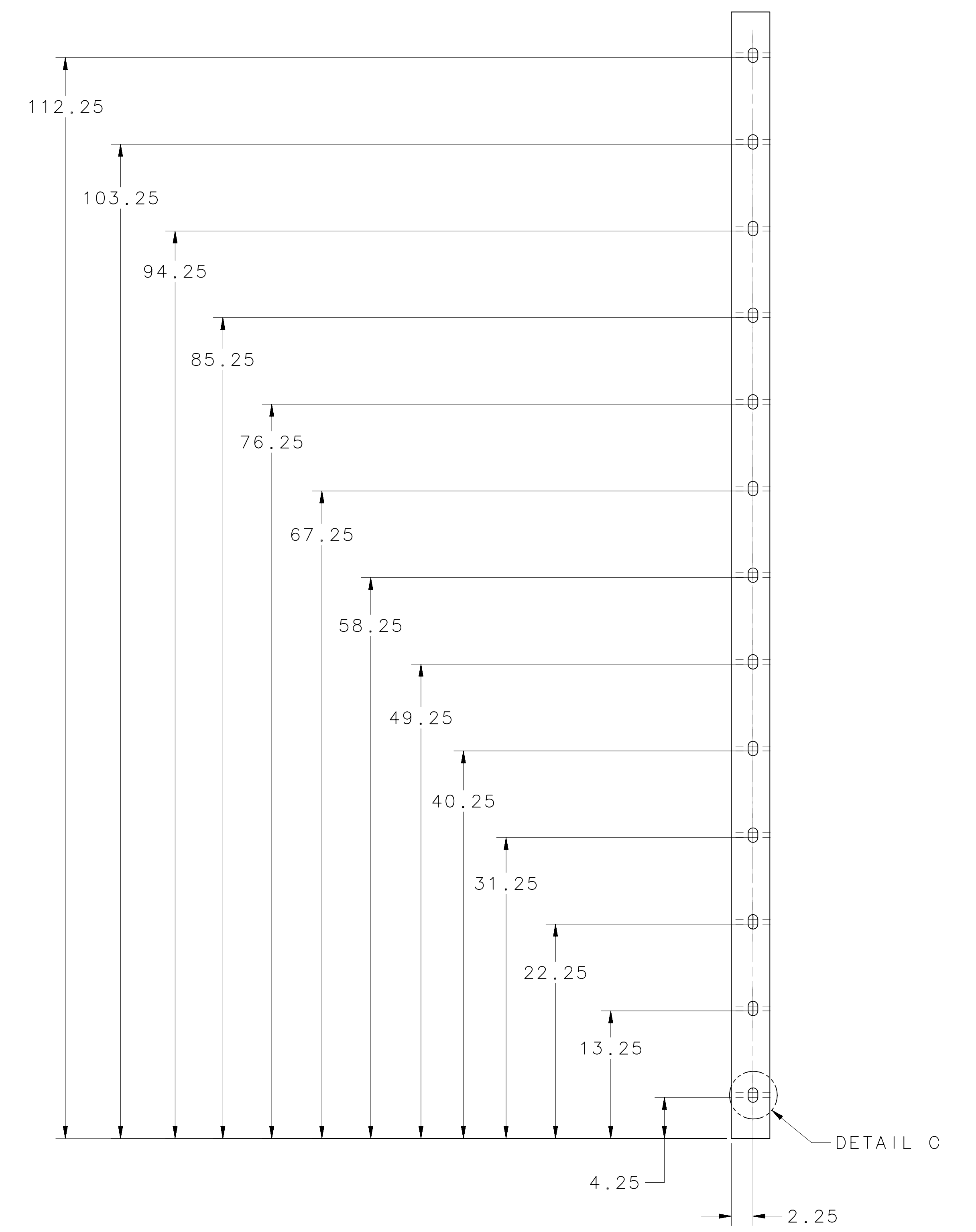
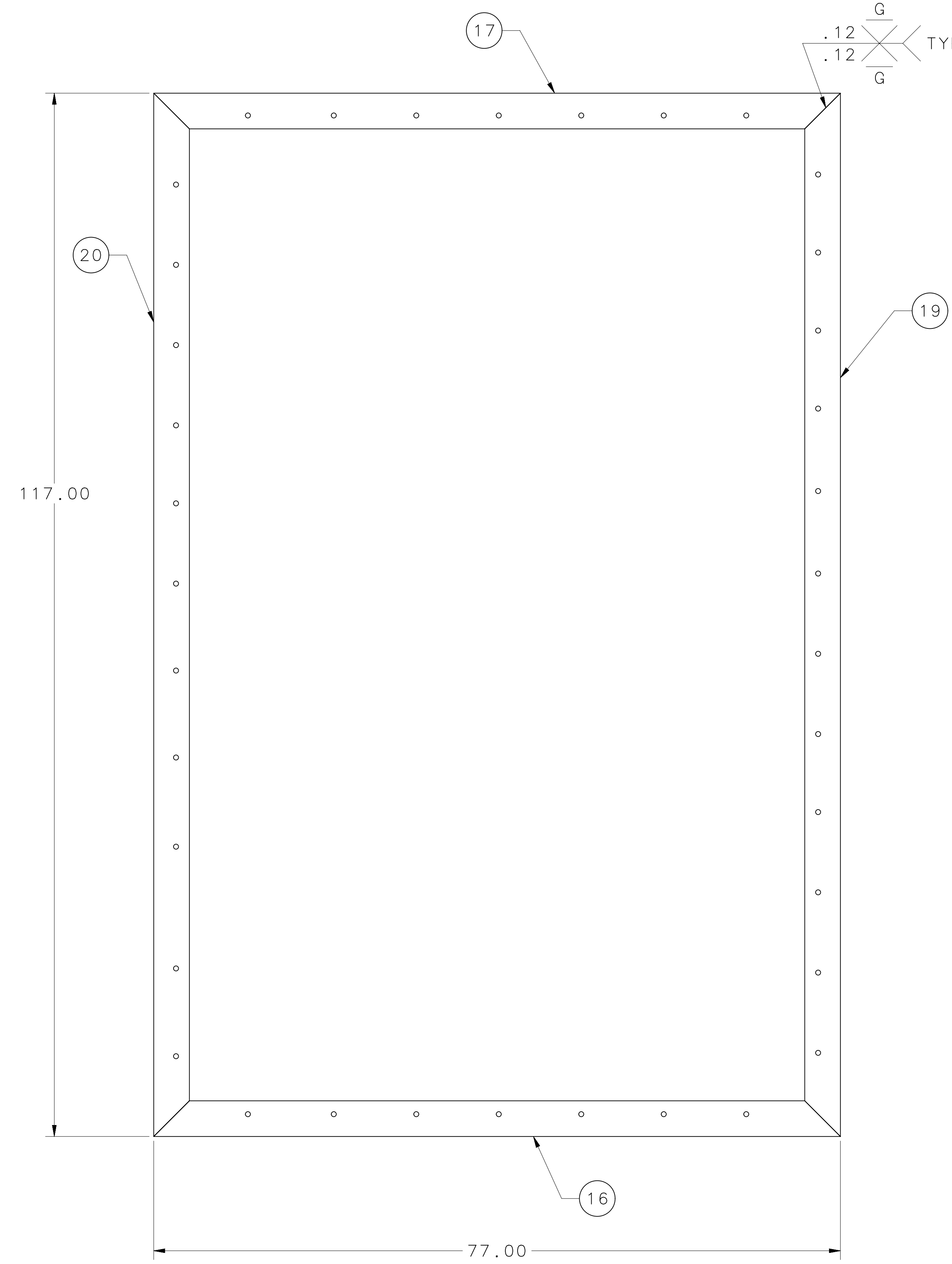
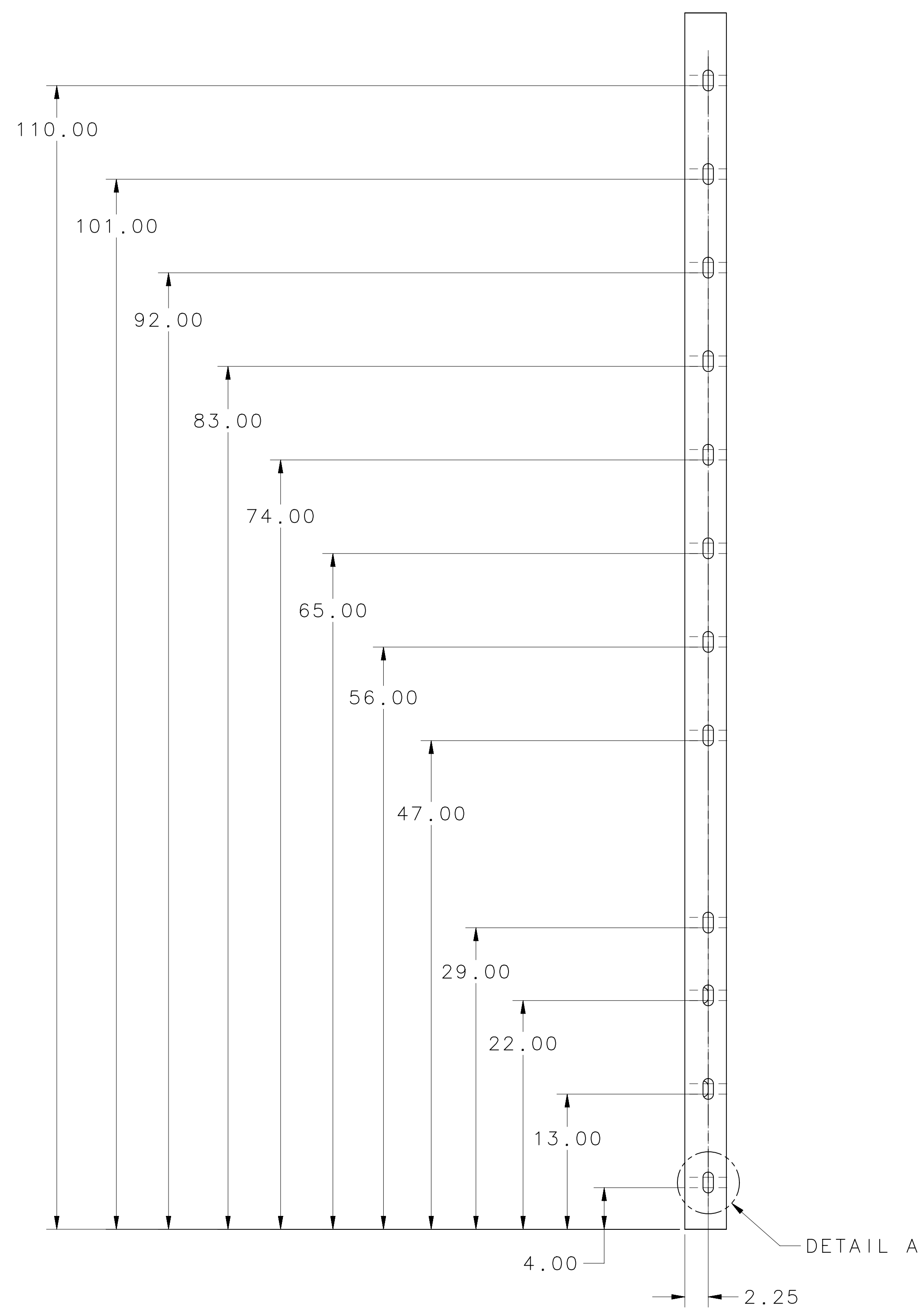
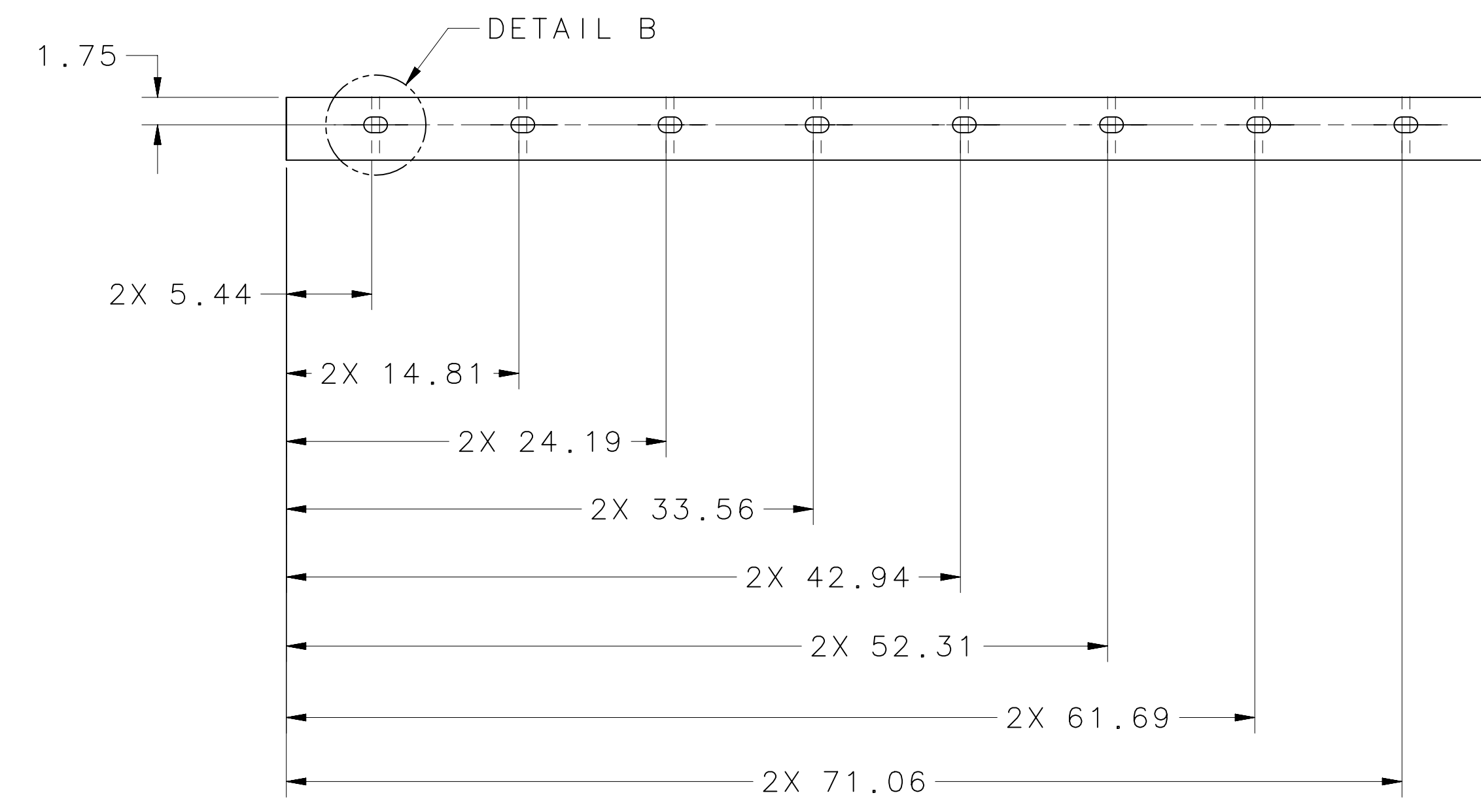
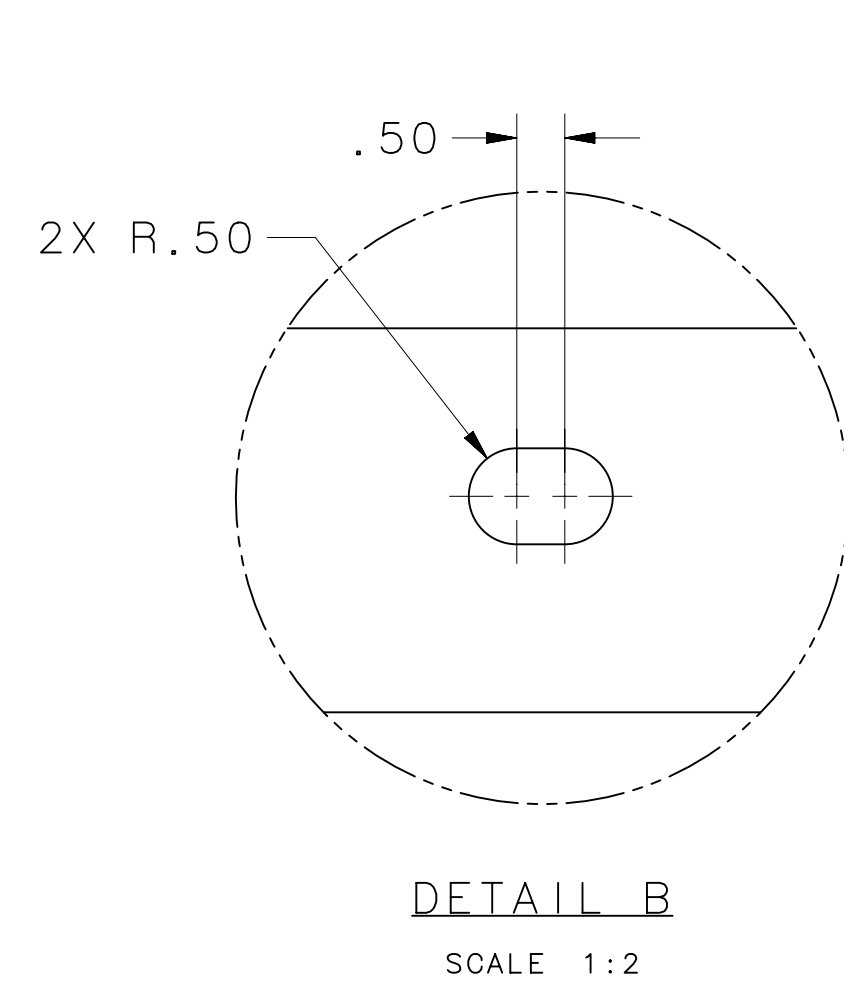


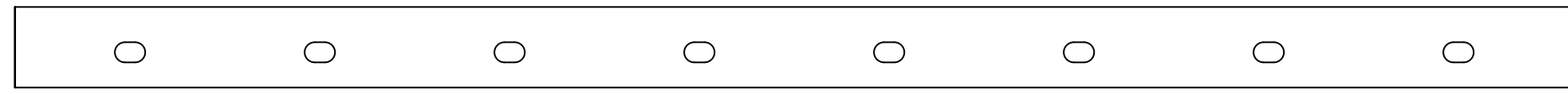
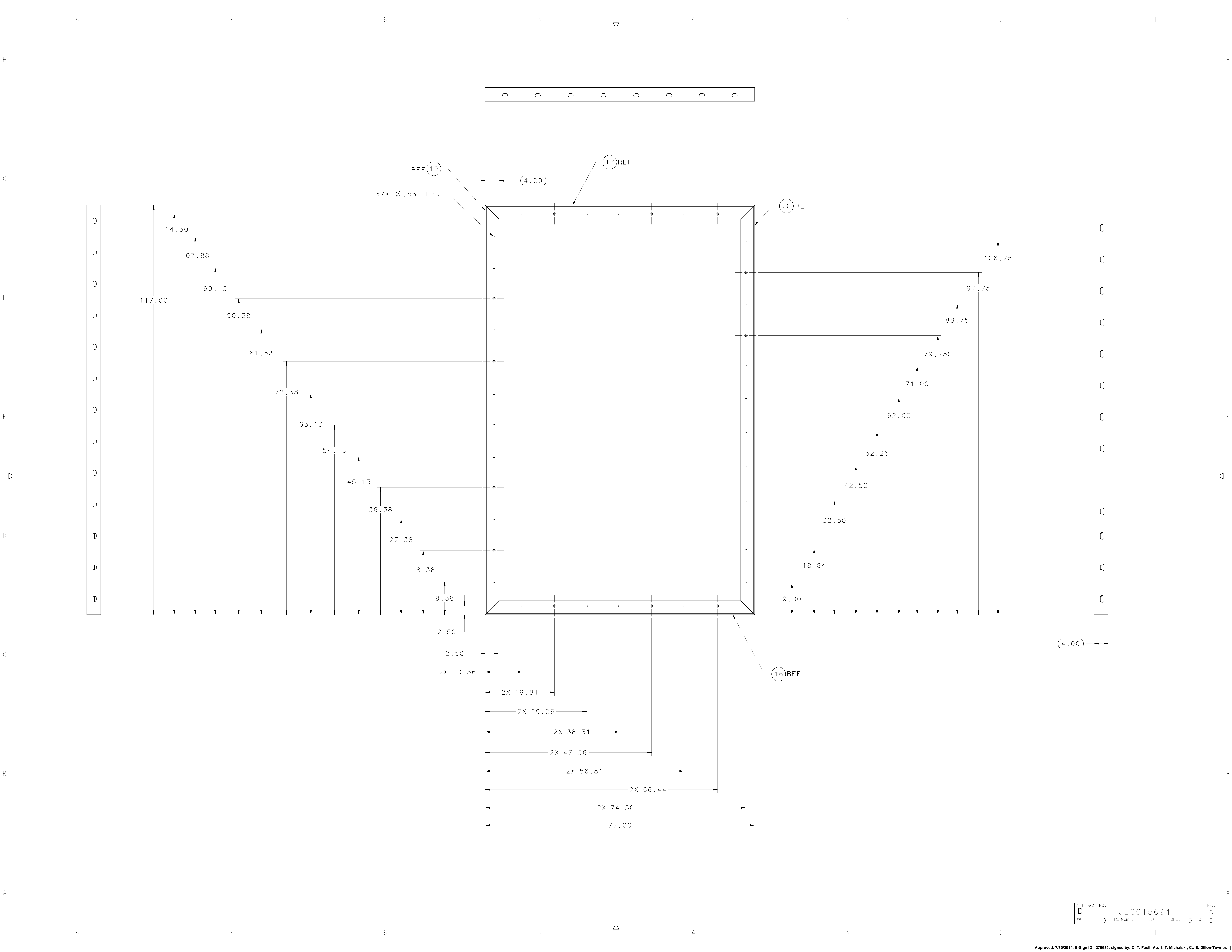
QTY	ITEM NO.	PART OR IDENTIFYING NO.	NOMENCLATURE OR DESCRIPTION	MATERIAL SPECIFICATION	NOTES
6	43		HARDWARE	HEX NUT, .38-16 UNC	SILICON BRONZE
6	42		HARDWARE	LOCK WASHER, .38	300 SERIES STAINLESS STEEL
6	41		HARDWARE	FLAT WASHER, .38	300 SERIES STAINLESS STEEL
6	40		HARDWARE	SOCKET HEAD CAP SCREW, .38-16 UNC X 1.50 LG.	300 SERIES STAINLESS STEEL
44	39		HARDWARE	HEX NUT, #8-32 UNC	SILICON BRONZE
44	38		HARDWARE	LOCK WASHER, #8	300 SERIES STAINLESS STEEL
44	37		HARDWARE	FLAT WASHER, #8	300 SERIES STAINLESS STEEL
44	36		HARDWARE	SOCKET HEAD CAP SCREW #8-32 UNC X .62 LG.	300 SERIES STAINLESS STEEL
37	35		HARDWARE	HEX NUT, .50-13 UNC	SILICON BRONZE
37	34		HARDWARE	LOCK WASHER, .50	300 SERIES STAINLESS STEEL
37	33		HARDWARE	FLAT WASHER, .50	300 SERIES STAINLESS STEEL
37	32		HARDWARE	HEX HEAD BOLT, .50-13 UNC X 1.50 LG.	300 SERIES STAINLESS STEEL
14	31		HARDWARE	HEX NUT, .31-18 UNC	SILICON BRONZE
14	30		HARDWARE	LOCK WASHER, .31	300 SERIES STAINLESS STEEL
14	29		HARDWARE	FLAT WASHER, .31	300 SERIES STAINLESS STEEL
6	28		HARDWARE	HEX HEAD BOLT, .31-18 UNC X 1.25 LG.	300 SERIES STAINLESS STEEL
8	27		HARDWARE	SOCKET HEAD CAP SCREW, .31-18 UNC X 1.25 LG.	300 SERIES STAINLESS STEEL
12	26		HARDWARE	STUD, .62-11 UNC	300 SERIES STAINLESS STEEL
65	25		HARDWARE	FLANGE NUT, .62-11 UNC	SILICON BRONZE
65	24		HARDWARE	FLAT WASHER, .62	300 SERIES STAINLESS STEEL
41	23		HARDWARE	THREADED ROD, .62-11 UNC X 8.0 LG.	300 SERIES STAINLESS STEEL
41	22		MCMaster-CARR #97031A045	TWO WAY EXPANSION ANCHOR, .62-11 X 2.75 LG.	
2	21		-	C-CHANNEL-ANCHOR PLATE	ALUMINUM 6061-T6 SH 5
1	20		ANGLE	L4 X 4 X .38 LEFT	ALUMINUM 6061-T6 SH 2
1	19		ANGLE	L4 X 4 X .38 RIGHT	ALUMINUM 6061-T6 SH 2
2	18		ANGLE	L4 X 2 X .38 VERT	ALUMINUM 6061-T6 SH 4
1	17		ANGLE	L4 X 4 X .38 TOP	ALUMINUM 6061-T6 SH 2
1	16		ANGLE	L4 X 4 X .38 BOTTOM	ALUMINUM 6061-T6 SH 2
2	15		ANGLE	L4 X 2 X .38 HORZ	ALUMINUM 6061-T6 SH 4
1	14		ANGLE	L4 X 2 X .38 ABOVE DOOR	ALUMINUM 6061-T6 SH 4
11	13		MCMaster-CARR #5126A710	HOLD DOWN TOGGLE CLAMP	
1	12		MCMaster-CARR #8694K16	EPDM GASKET, .50 WIDE X .12 THICK	
3	11		-	DOOR HINGE SPACER	ALUMINUM 6061-T6 SH 4
1	10		-	DOOR HASP SPACER	ALUMINUM 6061-T6 SH 4
1	9		MCMaster-CARR #1750A53	HASP PADLOCK	
3	8		MCMaster-CARR #1151A890	LIFT OFF HINGE	
1	7		C-CHANNEL	C-CHANNEL 6" WIDE ALUMINUM ASSOCIATION	ALUMINUM 6061-T6 SH 5
1	6		JL0009943	VENT ISO WALL	
1	5		JL0016212	VACUUM TUBE HUB	
1	4		JL0017852	HIGH POWER VIEWER WINDOW	
1	3		JL0017856	HIGH POWER VIEWER TUBE WELDMENT	
1	2		JL0015725	WALL PLATE	
1	1		JL0016371	DOOR WELDMENT	

FOR JLAB INTERNAL USE ONLY  
 ALL WELDS ON THIS DRAWING ARE AS DEFINED BY JLAB ES & H MANUAL, WELDING & BRAZING PROGRAM SUPPLEMENT.  
 WELD CLASS: C  
 WELD SPECIFICATION: \*  
 WELD ANALYSIS: \*

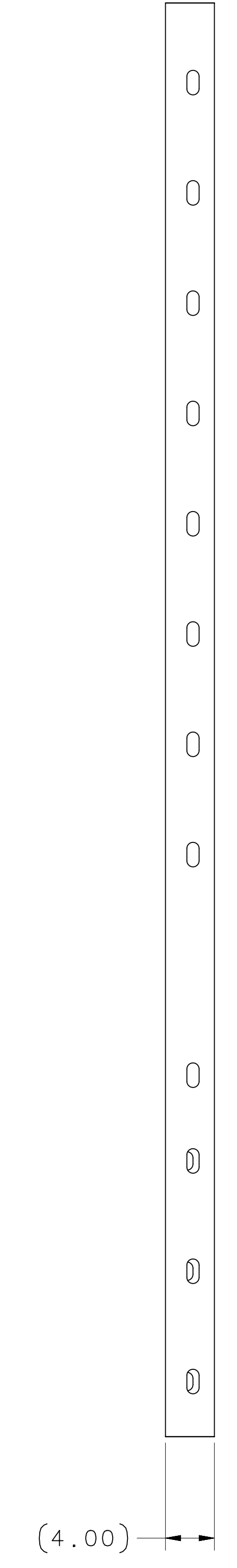
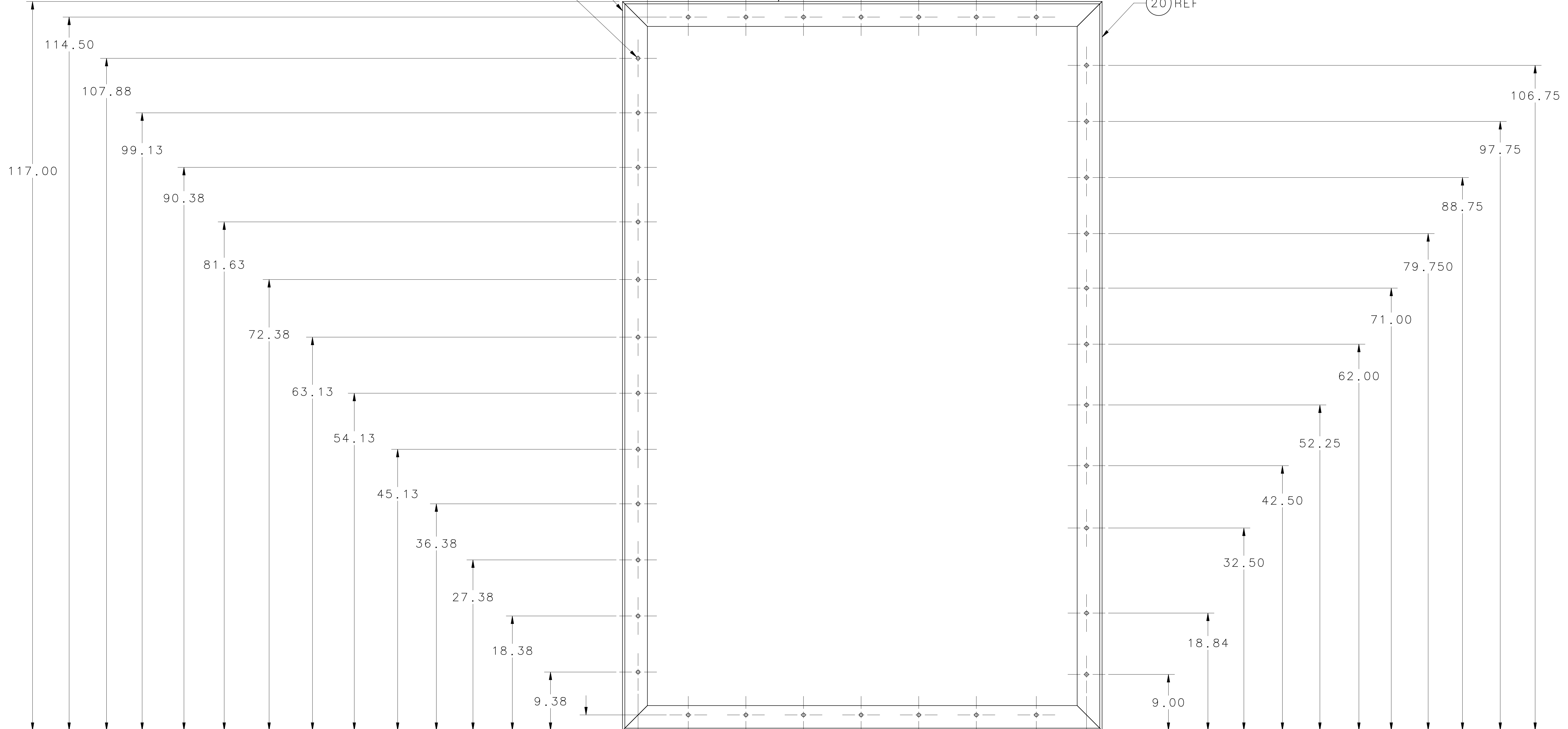
SEE PARTS LIST  
 THIRD ANGLE PROJECTION  
 FINISH: MACHINED SURFACES UNLESS OTHERWISE NOTED  
 DO NOT SCALE DRAWING  
 DATE: 01JUL14  
 SCALE: 1:10  
 SHEET: 1 OF 5

United States Department of Energy  
**Jefferson Lab**  
 Newport News, Virginia  
 HALL A INSTALLATION BEAM DUMP ISO WALL WELDMENT ASSEMBLY  
 SIZE: DWG. NO. JL0015694  
 REV. A



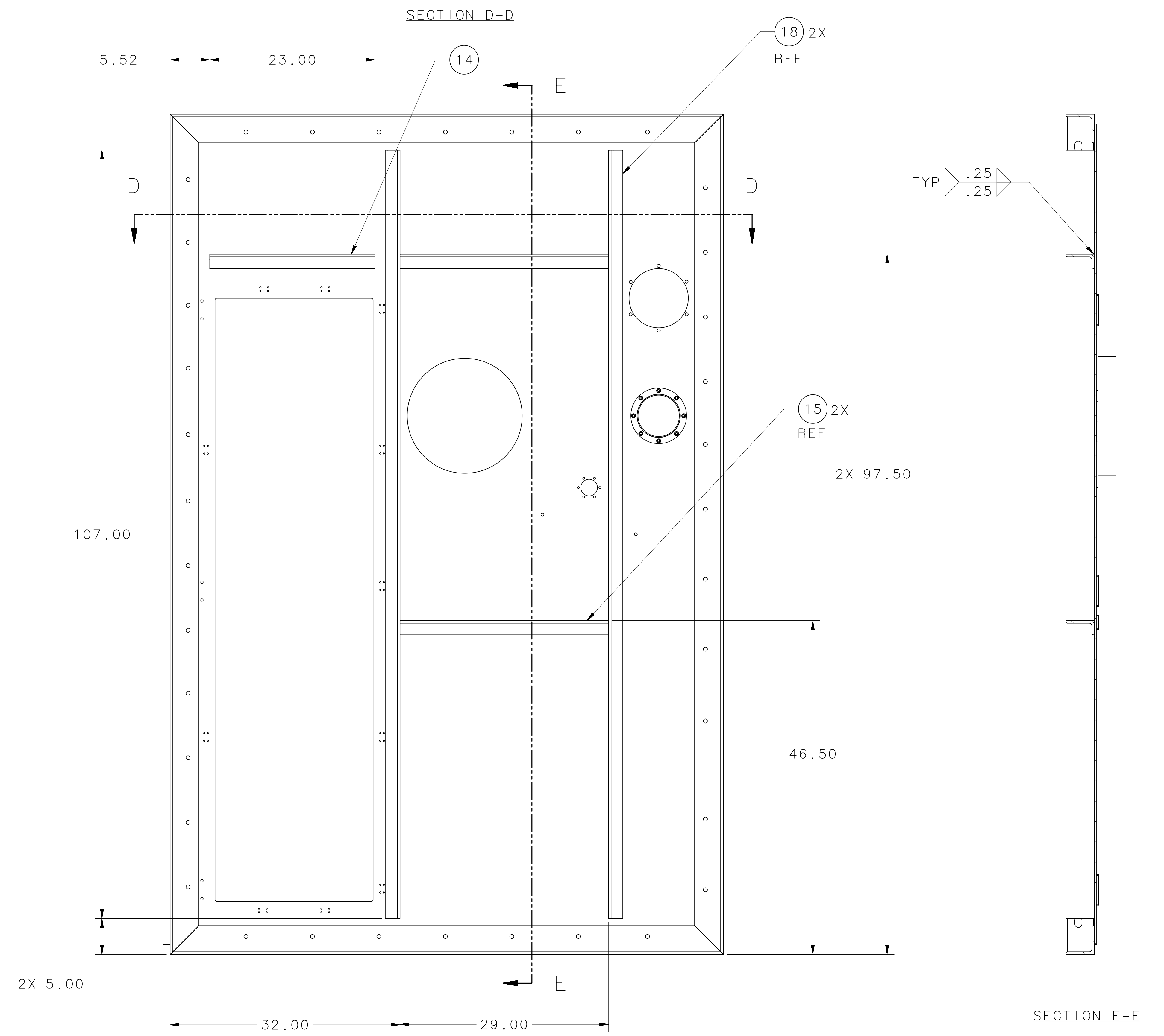
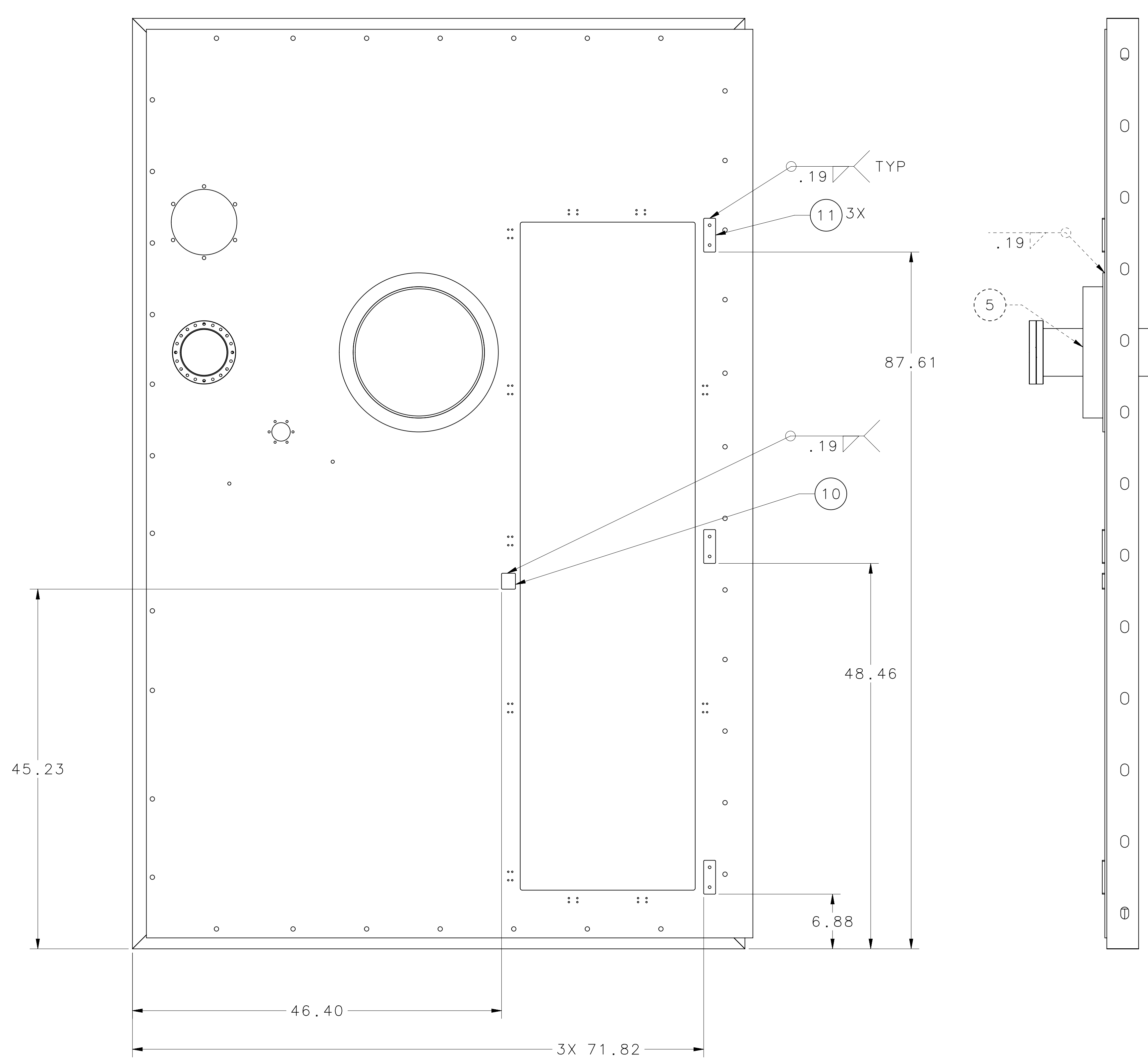
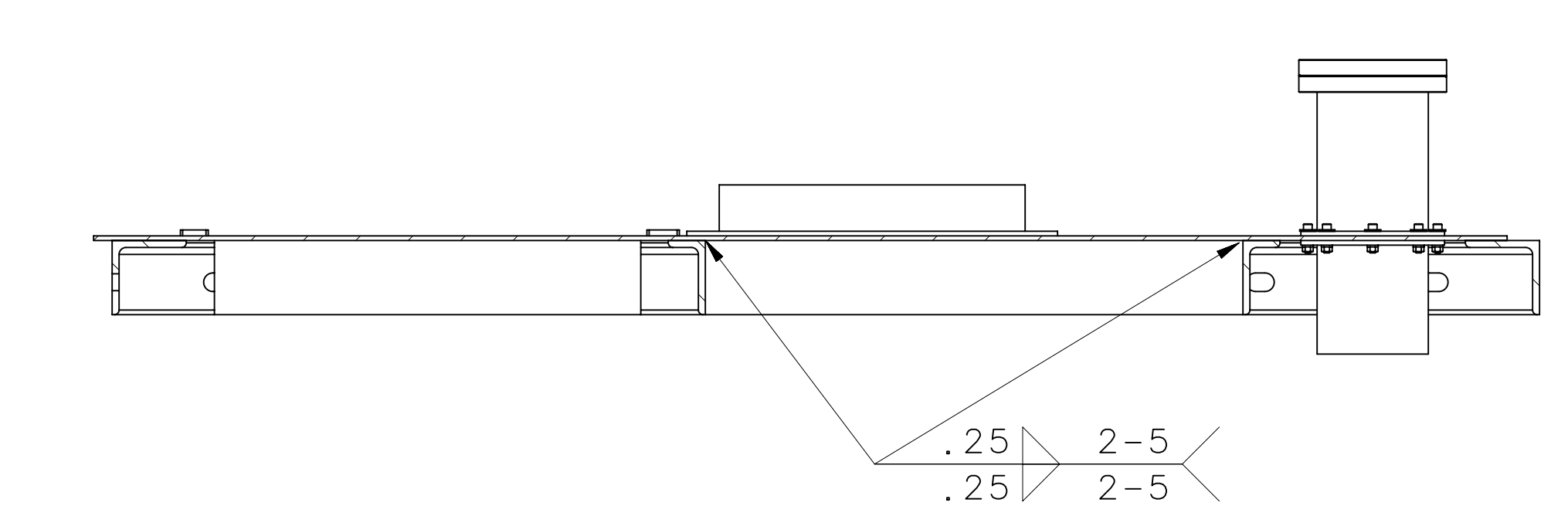
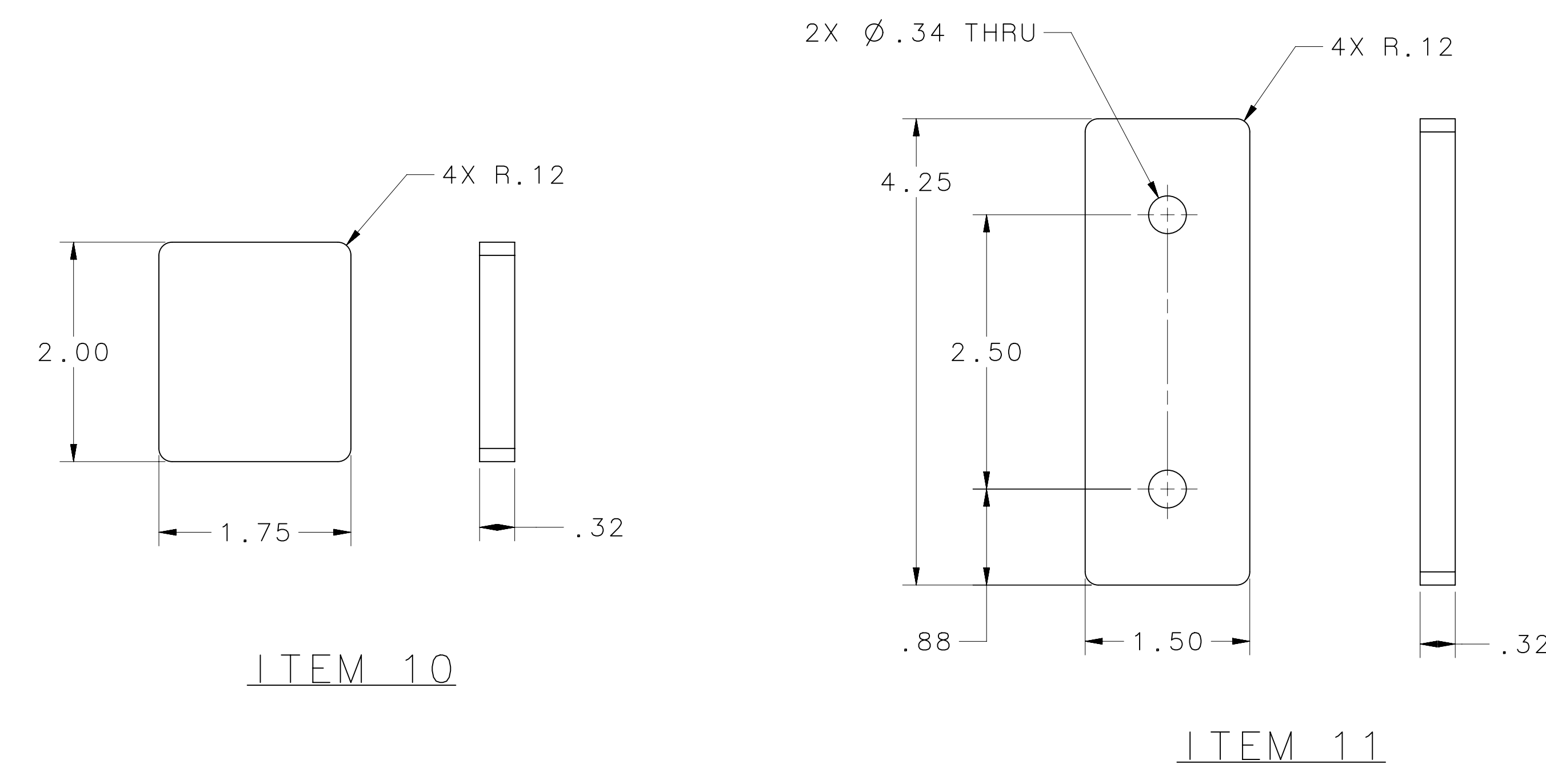


REF 19  
 37X Ø.56 THRU  
 (4.00)  
 REF 17  
 REF 20

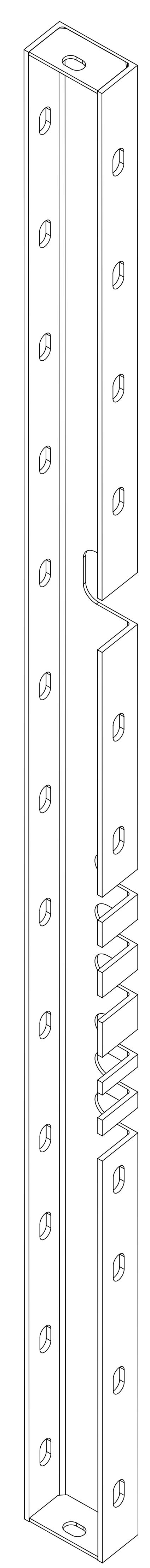
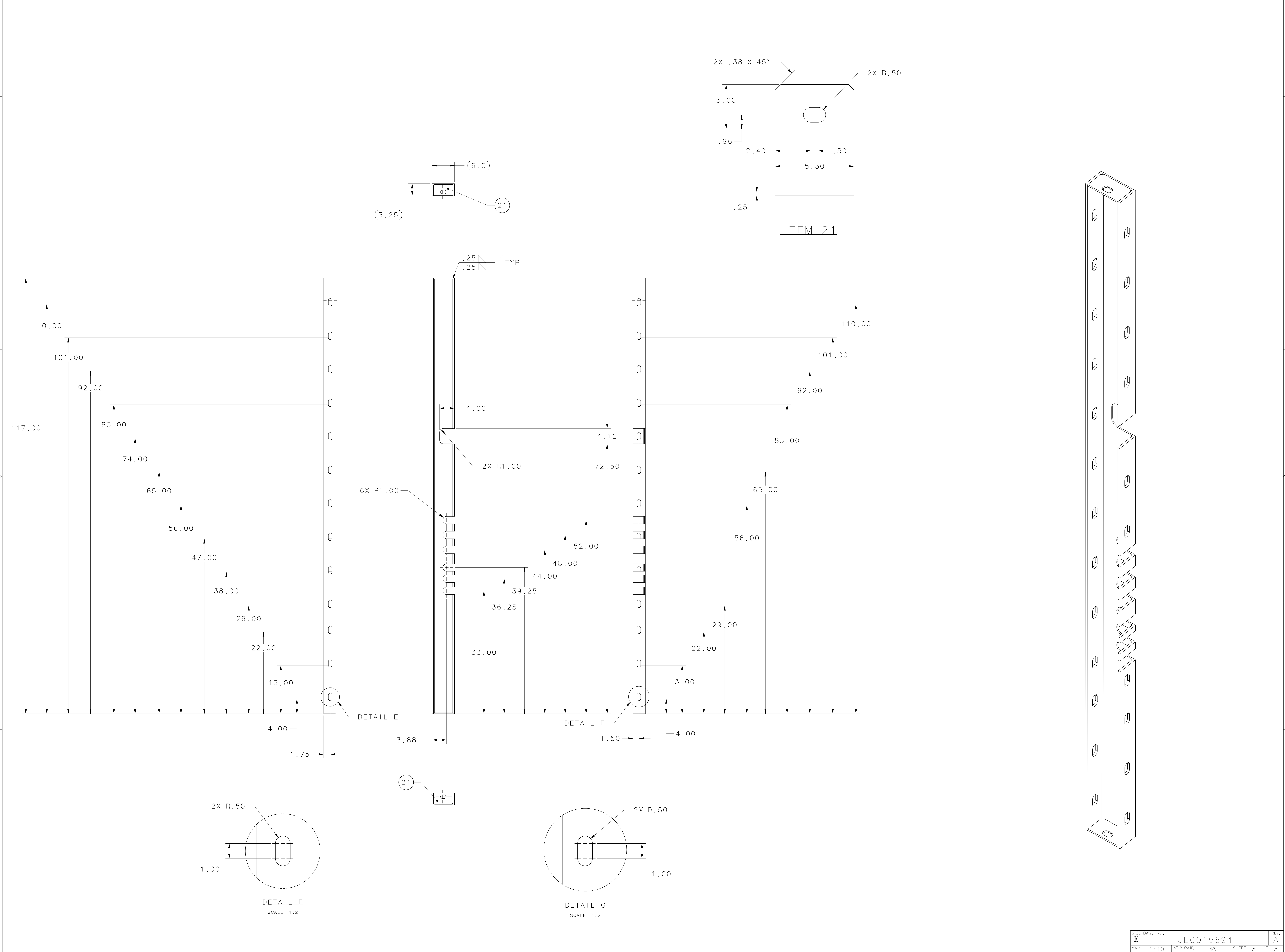


REF 16  
 2.50  
 2.50  
 2X 10.56  
 2X 19.81  
 2X 29.06  
 2X 38.31  
 2X 47.56  
 2X 56.81  
 2X 66.44  
 2X 74.50  
 77.00

8 7 6 5 4 3 2 1



SIZE	DWG. NO.	REV.
E	JL0015694	A
SCALE	1:10	SHEET 4 OF 5



SIZE	DWG. NO.	REV.
E	JL0015694	A
SCALE	USED OR ASSY NO.	SHEET
1:10	N/A	5 OF 5