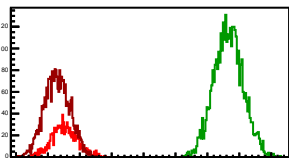
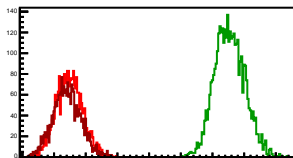


**Cycle 1, PosHel**

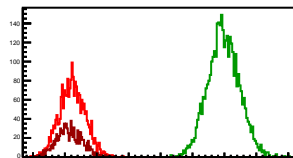
Entries: 994	Entries: 3710	Entries: 2619
Mean: 6.2625 +/- 0.0064	Mean: 8.8316 +/- 0.0038	Mean: 6.1450 +/- 0.0039
Std Dev: 0.2025 +/- 0.0045	Std Dev: 0.2290 +/- 0.0027	Std Dev: 0.1978 +/- 0.0027

**Cycle 2, PosHel**

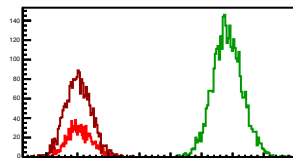
Entries: 2574	Entries: 3781	Entries: 2269
Mean: 6.2415 +/- 0.0041	Mean: 8.7724 +/- 0.0038	Mean: 6.2031 +/- 0.0046
Std Dev: 0.2063 +/- 0.0029	Std Dev: 0.2366 +/- 0.0027	Std Dev: 0.2192 +/- 0.0033

**Cycle 3, PosHel**

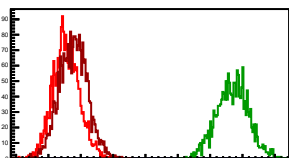
Entries: 2300	Entries: 3669	Entries: 973
Mean: 6.1164 +/- 0.0042	Mean: 8.4877 +/- 0.0041	Mean: 6.0745 +/- 0.0065
Std Dev: 0.2031 +/- 0.0030	Std Dev: 0.2462 +/- 0.0029	Std Dev: 0.2037 +/- 0.0046

**Cycle 4, PosHel**

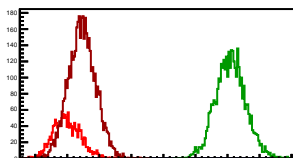
Entries: 991	Entries: 3638	Entries: 2287
Mean: 6.0434 +/- 0.0066	Mean: 8.4172 +/- 0.0030	Mean: 6.0152 +/- 0.0044
Std Dev: 0.2070 +/- 0.0047	Std Dev: 0.2374 +/- 0.0028	Std Dev: 0.2091 +/- 0.0031

**Cycle 5, PosHel**

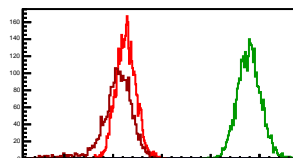
Entries: 2267	Entries: 1735	Entries: 2422
Mean: 5.7749 +/- 0.0042	Mean: 8.3477 +/- 0.0058	Mean: 5.8859 +/- 0.0044
Std Dev: 0.2019 +/- 0.0030	Std Dev: 0.2429 +/- 0.0041	Std Dev: 0.2152 +/- 0.0031

**Cycle 6, PosHel**

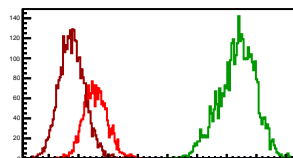
Entries: 1590	Entries: 3739	Entries: 4561
Mean: 5.9945 +/- 0.0054	Mean: 8.5496 +/- 0.0038	Mean: 6.2304 +/- 0.0032
Std Dev: 0.2127 +/- 0.0038	Std Dev: 0.2340 +/- 0.0027	Std Dev: 0.2136 +/- 0.0022

**Cycle 7, PosHel**

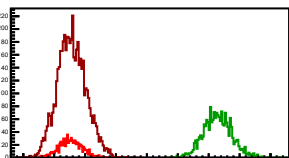
Entries: 4538	Entries: 3641	Entries: 2231
Mean: 6.2638 +/- 0.0029	Mean: 8.7902 +/- 0.0039	Mean: 6.0760 +/- 0.0069
Std Dev: 0.1987 +/- 0.0021	Std Dev: 0.2353 +/- 0.0028	Std Dev: 0.3267 +/- 0.0049

**Cycle 8, PosHel**

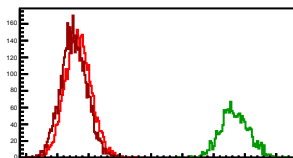
Entries: 2188	Entries: 3765	Entries: 3383
Mean: 6.2897 +/- 0.0043	Mean: 8.6798 +/- 0.0050	Mean: 5.8899 +/- 0.0037
Std Dev: 0.1996 +/- 0.0030	Std Dev: 0.3064 +/- 0.0035	Std Dev: 0.2156 +/- 0.0026

**Cycle 9, PosHel**

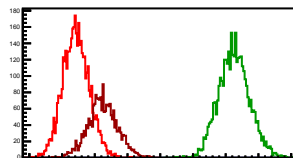
Entries: 825	Entries: 1888	Entries: 5099
Mean: 5.7656 +/- 0.0066	Mean: 8.1461 +/- 0.0053	Mean: 5.7854 +/- 0.0032
Std Dev: 0.1897 +/- 0.0047	Std Dev: 0.2294 +/- 0.0037	Std Dev: 0.2310 +/- 0.0023

**Cycle 10, PosHel**

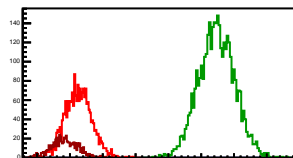
Entries: 3776	Entries: 3659	Entries: 4422
Mean: 5.8308 +/- 0.0034	Mean: 8.3392 +/- 0.0058	Mean: 5.7639 +/- 0.0031
Std Dev: 0.2086 +/- 0.0024	Std Dev: 0.2294 +/- 0.0041	Std Dev: 0.2087 +/- 0.0022

**Cycle 11, PosHel**

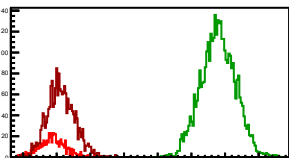
Entries: 4315	Entries: 3664	Entries: 2136
Mean: 5.7126 +/- 0.0031	Mean: 8.1290 +/- 0.0039	Mean: 6.1217 +/- 0.0049
Std Dev: 0.2016 +/- 0.0022	Std Dev: 0.2367 +/- 0.0028	Std Dev: 0.2279 +/- 0.0035

**Cycle 12, PosHel**

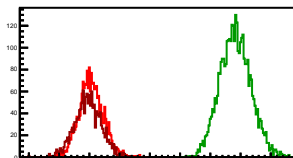
Entries: 2117	Entries: 3765	Entries: 641
Mean: 6.1285 +/- 0.0044	Mean: 8.2348 +/- 0.0045	Mean: 5.9188 +/- 0.0079
Std Dev: 0.2038 +/- 0.0031	Std Dev: 0.2732 +/- 0.0031	Std Dev: 0.2004 +/- 0.0056

**Cycle 13, PosHel**

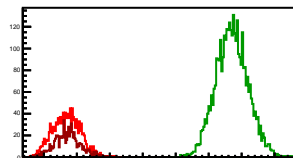
Entries: 628	Entries: 3762	Entries: 2014
Mean: 5.9344 +/- 0.0077	Mean: 8.3996 +/- 0.0042	Mean: 6.0638 +/- 0.0046
Std Dev: 0.1929 +/- 0.0054	Std Dev: 0.2547 +/- 0.0029	Std Dev: 0.2042 +/- 0.0032

**Cycle 14, PosHel**

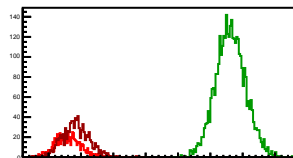
Entries: 2022	Entries: 3683	Entries: 1417
Mean: 5.8300 +/- 0.0045	Mean: 8.4153 +/- 0.0042	Mean: 5.9782 +/- 0.0059
Std Dev: 0.2009 +/- 0.0032	Std Dev: 0.2548 +/- 0.0030	Std Dev: 0.2206 +/- 0.0041

**Cycle 15, PosHel**

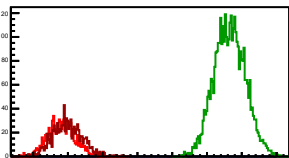
Entries: 1379	Entries: 3673	Entries: 740
Mean: 5.8433 +/- 0.0057	Mean: 8.3528 +/- 0.0040	Mean: 5.8583 +/- 0.0072
Std Dev: 0.2118 +/- 0.0040	Std Dev: 0.2420 +/- 0.0028	Std Dev: 0.1953 +/- 0.0051

**Cycle 16, PosHel**

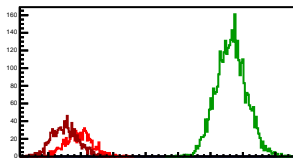
Entries: 715	Entries: 3681	Entries: 877
Mean: 5.7970 +/- 0.0075	Mean: 8.3143 +/- 0.0038	Mean: 5.9183 +/- 0.0070
Std Dev: 0.2016 +/- 0.0053	Std Dev: 0.2310 +/- 0.0027	Std Dev: 0.2067 +/- 0.0049

**Cycle 17, PosHel**

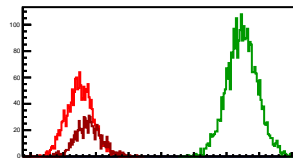
Entries: 838	Entries: 3770	Entries: 912
Mean: 5.8061 +/- 0.0069	Mean: 8.3262 +/- 0.0036	Mean: 5.9914 +/- 0.0069
Std Dev: 0.1990 +/- 0.0049	Std Dev: 0.2233 +/- 0.0026	Std Dev: 0.2082 +/- 0.0049

**Cycle 18, PosHel**

Entries: 880	Entries: 3754	Entries: 1209
Mean: 5.9707 +/- 0.0068	Mean: 8.3213 +/- 0.0038	Mean: 5.7559 +/- 0.0057
Std Dev: 0.2015 +/- 0.0048	Std Dev: 0.2337 +/- 0.0027	Std Dev: 0.1990 +/- 0.0040

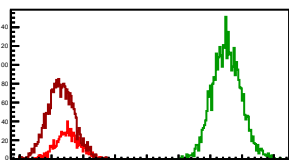
**Cycle 19, PosHel**

Entries: 1704	Entries: 2932	Entries: 789
Mean: 5.7507 +/- 0.0049	Mean: 8.2377 +/- 0.0043	Mean: 5.8953 +/- 0.0071
Std Dev: 0.2006 +/- 0.0034	Std Dev: 0.2329 +/- 0.0030	Std Dev: 0.1986 +/- 0.0050

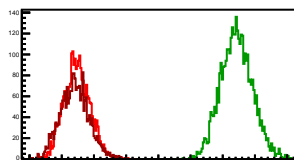


**Cycle 1, NegHel**

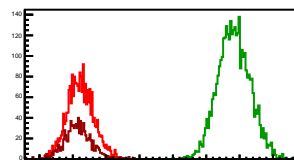
Entries: 994	Entries: 3710	Entries: 2619
Mean: 6.2642 +/- 0.0061	Mean: 8.7591 +/- 0.0037	Mean: 6.1450 +/- 0.0041
Std Dev: 0.1919 +/- 0.0043	Std Dev: 0.2276 +/- 0.0026	Std Dev: 0.2082 +/- 0.0029

**Cycle 2, NegHel**

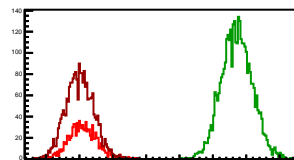
Entries: 2574	Entries: 3781	Entries: 2269
Mean: 6.2364 +/- 0.0040	Mean: 8.7149 +/- 0.0040	Mean: 6.2022 +/- 0.0046
Std Dev: 0.2016 +/- 0.0028	Std Dev: 0.2465 +/- 0.0028	Std Dev: 0.2202 +/- 0.0033

**Cycle 3, NegHel**

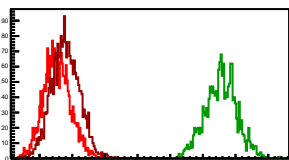
Entries: 2300	Entries: 3669	Entries: 973
Mean: 6.1149 +/- 0.0042	Mean: 8.4154 +/- 0.0040	Mean: 6.0757 +/- 0.0063
Std Dev: 0.2006 +/- 0.0030	Std Dev: 0.2407 +/- 0.0028	Std Dev: 0.1973 +/- 0.0045

**Cycle 4, NegHel**

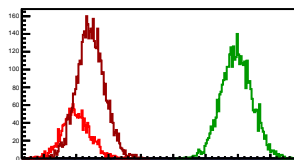
Entries: 991	Entries: 3638	Entries: 2287
Mean: 6.0505 +/- 0.0066	Mean: 8.3591 +/- 0.0030	Mean: 6.0062 +/- 0.0044
Std Dev: 0.2082 +/- 0.0047	Std Dev: 0.2325 +/- 0.0027	Std Dev: 0.2103 +/- 0.0031

**Cycle 5, NegHel**

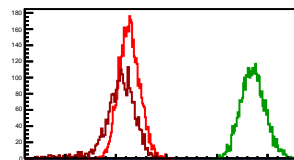
Entries: 2267	Entries: 1735	Entries: 2422
Mean: 5.7667 +/- 0.0043	Mean: 8.2796 +/- 0.0058	Mean: 5.8951 +/- 0.0043
Std Dev: 0.2052 +/- 0.0030	Std Dev: 0.2404 +/- 0.0041	Std Dev: 0.2113 +/- 0.0030

**Cycle 6, NegHel**

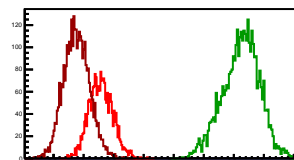
Entries: 1590	Entries: 3739	Entries: 4561
Mean: 5.9987 +/- 0.0054	Mean: 8.4810 +/- 0.0039	Mean: 6.2245 +/- 0.0032
Std Dev: 0.2164 +/- 0.0038	Std Dev: 0.2384 +/- 0.0028	Std Dev: 0.2138 +/- 0.0022

**Cycle 7, NegHel**

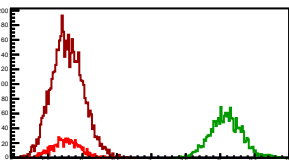
Entries: 4538	Entries: 3641	Entries: 2231
Mean: 6.2688 +/- 0.0030	Mean: 8.7129 +/- 0.0040	Mean: 6.0769 +/- 0.0068
Std Dev: 0.2038 +/- 0.0021	Std Dev: 0.2385 +/- 0.0028	Std Dev: 0.3222 +/- 0.0048

**Cycle 8, NegHel**

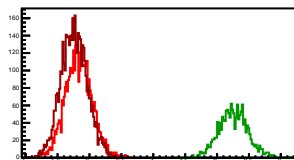
Entries: 2188	Entries: 3765	Entries: 3383
Mean: 6.2868 +/- 0.0042	Mean: 8.6196 +/- 0.0050	Mean: 5.8822 +/- 0.0037
Std Dev: 0.1955 +/- 0.0030	Std Dev: 0.2659 +/- 0.0035	Std Dev: 0.2140 +/- 0.0026

**Cycle 9, NegHel**

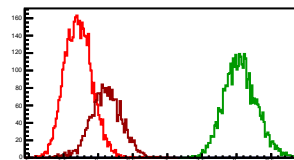
Entries: 825	Entries: 1888	Entries: 5099
Mean: 5.7589 +/- 0.0067	Mean: 8.0850 +/- 0.0053	Mean: 5.7818 +/- 0.0032
Std Dev: 0.1924 +/- 0.0047	Std Dev: 0.2292 +/- 0.0037	Std Dev: 0.2280 +/- 0.0023

**Cycle 10, NegHel**

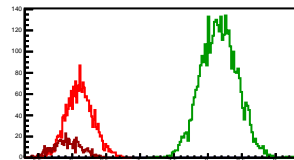
Entries: 3776	Entries: 1569	Entries: 4422
Mean: 5.8296 +/- 0.0034	Mean: 8.2583 +/- 0.0057	Mean: 5.7605 +/- 0.0031
Std Dev: 0.2082 +/- 0.0024	Std Dev: 0.2276 +/- 0.0041	Std Dev: 0.2062 +/- 0.0022

**Cycle 11, NegHel**

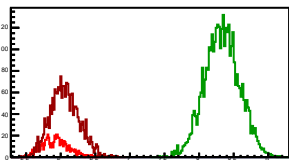
Entries: 4315	Entries: 3684	Entries: 2136
Mean: 5.7144 +/- 0.0030	Mean: 8.0551 +/- 0.0039	Mean: 6.1158 +/- 0.0049
Std Dev: 0.1987 +/- 0.0021	Std Dev: 0.2363 +/- 0.0028	Std Dev: 0.2258 +/- 0.0035

**Cycle 12, NegHel**

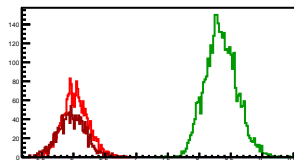
Entries: 2117	Entries: 3765	Entries: 641
Mean: 6.1118 +/- 0.0044	Mean: 8.1657 +/- 0.0043	Mean: 5.9249 +/- 0.0080
Std Dev: 0.2014 +/- 0.0031	Std Dev: 0.2657 +/- 0.0031	Std Dev: 0.2027 +/- 0.0057

**Cycle 13, NegHel**

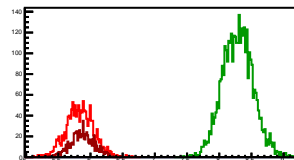
Entries: 628	Entries: 3762	Entries: 2014
Mean: 5.9282 +/- 0.0076	Mean: 8.3316 +/- 0.0041	Mean: 6.0582 +/- 0.0046
Std Dev: 0.1896 +/- 0.0053	Std Dev: 0.2515 +/- 0.0029	Std Dev: 0.2073 +/- 0.0033

**Cycle 14, NegHel**

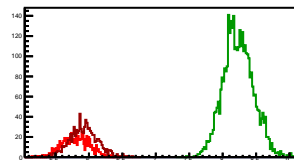
Entries: 2022	Entries: 3683	Entries: 1417
Mean: 6.0264 +/- 0.0046	Mean: 8.3440 +/- 0.0042	Mean: 5.9719 +/- 0.0059
Std Dev: 0.2048 +/- 0.0032	Std Dev: 0.2254 +/- 0.0029	Std Dev: 0.2221 +/- 0.0042

**Cycle 15, NegHel**

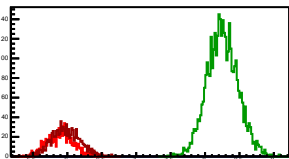
Entries: 1379	Entries: 3673	Entries: 740
Mean: 5.8331 +/- 0.0058	Mean: 8.2866 +/- 0.0039	Mean: 5.8742 +/- 0.0068
Std Dev: 0.2152 +/- 0.0041	Std Dev: 0.2388 +/- 0.0028	Std Dev: 0.1861 +/- 0.0048

**Cycle 16, NegHel**

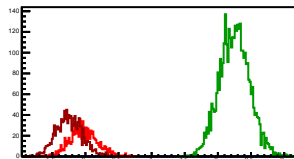
Entries: 715	Entries: 3681	Entries: 877
Mean: 5.7999 +/- 0.0075	Mean: 8.2341 +/- 0.0037	Mean: 5.9230 +/- 0.0070
Std Dev: 0.2003 +/- 0.0053	Std Dev: 0.2255 +/- 0.0026	Std Dev: 0.2060 +/- 0.0049

**Cycle 17, NegHel**

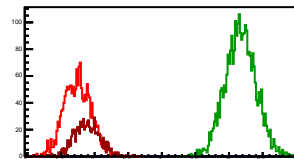
Entries: 638	Entries: 3770	Entries: 912
Mean: 5.8022 +/- 0.0067	Mean: 8.2531 +/- 0.0036	Mean: 5.9777 +/- 0.0069
Std Dev: 0.1945 +/- 0.0048	Std Dev: 0.2241 +/- 0.0026	Std Dev: 0.2088 +/- 0.0049

**Cycle 18, NegHel**

Entries: 880	Entries: 3754	Entries: 1209
Mean: 5.9744 +/- 0.0070	Mean: 8.2512 +/- 0.0037	Mean: 5.7587 +/- 0.0057
Std Dev: 0.2077 +/- 0.0050	Std Dev: 0.2264 +/- 0.0026	Std Dev: 0.1983 +/- 0.0040

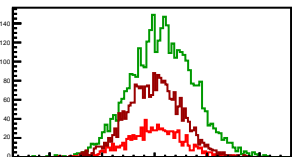
**Cycle 19, NegHel**

Entries: 1704	Entries: 2932	Entries: 789
Mean: 5.7444 +/- 0.0049	Mean: 8.1706 +/- 0.0042	Mean: 5.8854 +/- 0.0067
Std Dev: 0.2021 +/- 0.0035	Std Dev: 0.2297 +/- 0.0030	Std Dev: 0.1894 +/- 0.0049



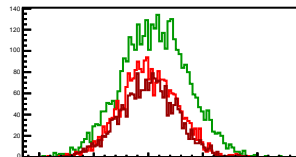
### Cycle 1, Diffs

Entries: 994	Entries: 3710	Entries: 2619
Mean: $-0.0016 \pm 0.0004$	Mean: $0.0725 \pm 0.0050$	Mean: $-0.0000 \pm 0.0050$
Std Dev: $0.2637 \pm 0.0059$	Std Dev: $0.3018 \pm 0.0035$	Std Dev: $0.2545 \pm 0.0035$



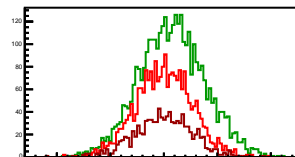
### Cycle 2, Diffs

Entries: 2574	Entries: 3781	Entries: 2269
Mean: $0.0051 \pm 0.0050$	Mean: $0.0575 \pm 0.0050$	Mean: $0.0009 \pm 0.0054$
Std Dev: $0.2549 \pm 0.0036$	Std Dev: $0.3048 \pm 0.0035$	Std Dev: $0.2578 \pm 0.0038$



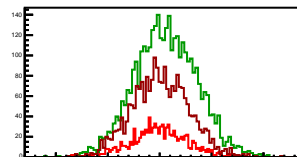
### Cycle 3, Diffs

Entries: 2300	Entries: 3669	Entries: 973
Mean: $0.0015 \pm 0.0055$	Mean: $0.0723 \pm 0.0051$	Mean: $-0.0011 \pm 0.0085$
Std Dev: $0.2631 \pm 0.0039$	Std Dev: $0.3072 \pm 0.0036$	Std Dev: $0.2667 \pm 0.0060$



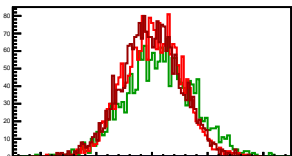
### Cycle 4, Diffs

Entries: 991	Entries: 3638	Entries: 2287
Mean: $-0.0072 \pm 0.0084$	Mean: $0.0581 \pm 0.0050$	Mean: $0.0090 \pm 0.0057$
Std Dev: $0.2630 \pm 0.0059$	Std Dev: $0.3031 \pm 0.0036$	Std Dev: $0.2745 \pm 0.0041$



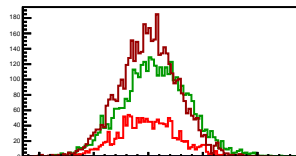
### Cycle 5, Diffs

Entries: 2267	Entries: 1735	Entries: 2422
Mean: $0.0083 \pm 0.0054$	Mean: $0.0681 \pm 0.0073$	Mean: $-0.0092 \pm 0.0053$
Std Dev: $0.2555 \pm 0.0038$	Std Dev: $0.3049 \pm 0.0052$	Std Dev: $0.2613 \pm 0.0038$



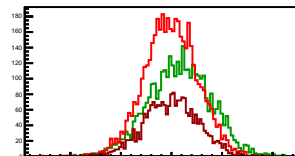
### Cycle 6, Diffs

Entries: 1590	Entries: 3739	Entries: 4561
Mean: $-0.0042 \pm 0.0056$	Mean: $0.0686 \pm 0.0050$	Mean: $0.0060 \pm 0.0040$
Std Dev: $0.2631 \pm 0.0047$	Std Dev: $0.3050 \pm 0.0035$	Std Dev: $0.2674 \pm 0.0028$



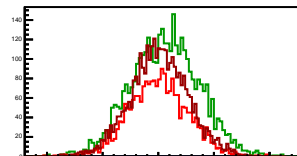
### Cycle 7, Diffs

Entries: 4538	Entries: 3641	Entries: 2231
Mean: $-0.0050 \pm 0.0039$	Mean: $0.0773 \pm 0.0051$	Mean: $-0.0009 \pm 0.0056$
Std Dev: $0.2607 \pm 0.0027$	Std Dev: $0.3103 \pm 0.0036$	Std Dev: $0.2635 \pm 0.0039$



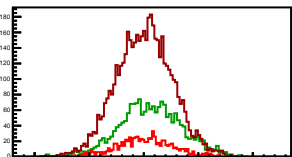
### Cycle 8, Diffs

Entries: 2188	Entries: 3765	Entries: 3383
Mean: $0.0029 \pm 0.0056$	Mean: $0.0602 \pm 0.0049$	Mean: $0.0077 \pm 0.0044$
Std Dev: $0.2627 \pm 0.0040$	Std Dev: $0.3037 \pm 0.0035$	Std Dev: $0.2588 \pm 0.0031$



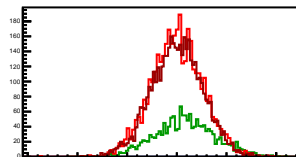
### Cycle 9, Diffs

Entries: 825	Entries: 1888	Entries: 5099
Mean: $0.0066 \pm 0.0088$	Mean: $0.0611 \pm 0.0067$	Mean: $0.0036 \pm 0.0036$
Std Dev: $0.2522 \pm 0.0062$	Std Dev: $0.2921 \pm 0.0048$	Std Dev: $0.2568 \pm 0.0025$



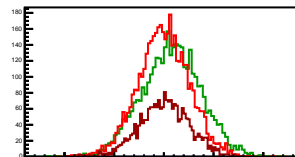
### Cycle 10, Diffs

Entries: 3776	Entries: 3659	Entries: 4422
Mean: $0.0013 \pm 0.0042$	Mean: $0.0809 \pm 0.0077$	Mean: $0.0034 \pm 0.0039$
Std Dev: $0.2574 \pm 0.0030$	Std Dev: $0.3041 \pm 0.0054$	Std Dev: $0.2574 \pm 0.0027$



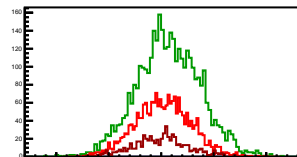
### Cycle 11, Diffs

Entries: 4315	Entries: 3664	Entries: 2136
Mean: $-0.0018 \pm 0.0039$	Mean: $0.0739 \pm 0.0050$	Mean: $0.0059 \pm 0.0054$
Std Dev: $0.2569 \pm 0.0028$	Std Dev: $0.3008 \pm 0.0035$	Std Dev: $0.2516 \pm 0.0039$



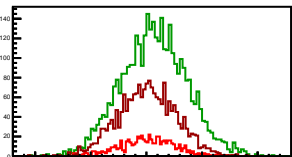
### Cycle 12, Diffs

Entries: 2117	Entries: 3765	Entries: 641
Mean: $0.0167 \pm 0.0057$	Mean: $0.0681 \pm 0.0049$	Mean: $-0.0062 \pm 0.0104$
Std Dev: $0.2617 \pm 0.0040$	Std Dev: $0.3029 \pm 0.0035$	Std Dev: $0.2624 \pm 0.0073$



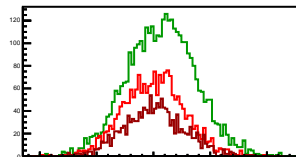
### Cycle 13, Diffs

Entries: 628	Entries: 3762	Entries: 2014
Mean: $0.0048 \pm 0.0088$	Mean: $0.0680 \pm 0.0048$	Mean: $0.0136 \pm 0.0058$
Std Dev: $0.2492 \pm 0.0070$	Std Dev: $0.2952 \pm 0.0034$	Std Dev: $0.2606 \pm 0.0041$



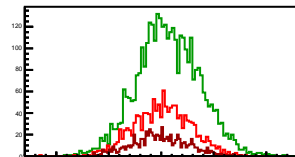
### Cycle 14, Diffs

Entries: 2022	Entries: 3683	Entries: 1417
Mean: $-0.0036 \pm 0.0059$	Mean: $0.0714 \pm 0.0050$	Mean: $-0.0028 \pm 0.0070$
Std Dev: $0.2665 \pm 0.0042$	Std Dev: $0.3016 \pm 0.0035$	Std Dev: $0.2624 \pm 0.0049$



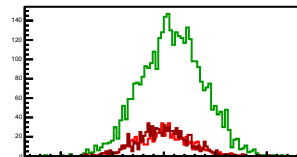
### Cycle 15, Diffs

Entries: 1379	Entries: 3673	Entries: 740
Mean: $0.0102 \pm 0.0073$	Mean: $0.0661 \pm 0.0049$	Mean: $-0.0159 \pm 0.0096$
Std Dev: $0.2697 \pm 0.0051$	Std Dev: $0.2988 \pm 0.0035$	Std Dev: $0.2601 \pm 0.0068$



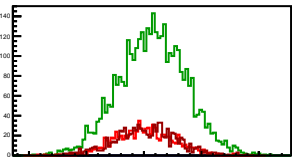
### Cycle 16, Diffs

Entries: 715	Entries: 3681	Entries: 877
Mean: $-0.0028 \pm 0.0099$	Mean: $0.0802 \pm 0.0050$	Mean: $-0.0047 \pm 0.0086$
Std Dev: $0.2634 \pm 0.0070$	Std Dev: $0.3021 \pm 0.0035$	Std Dev: $0.2552 \pm 0.0061$



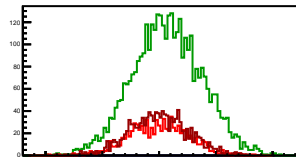
### Cycle 17, Diffs

Entries: 838	Entries: 3770	Entries: 912
Mean: $0.0038 \pm 0.0088$	Mean: $0.0731 \pm 0.0048$	Mean: $0.0136 \pm 0.0090$
Std Dev: $0.2559 \pm 0.0063$	Std Dev: $0.2923 \pm 0.0034$	Std Dev: $0.2713 \pm 0.0064$



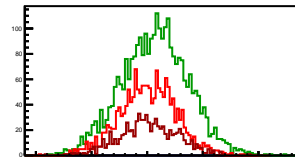
### Cycle 18, Diffs

Entries: 890	Entries: 3754	Entries: 1209
Mean: $-0.0037 \pm 0.0088$	Mean: $0.0701 \pm 0.0050$	Mean: $-0.0028 \pm 0.0074$
Std Dev: $0.2651 \pm 0.0063$	Std Dev: $0.3050 \pm 0.0035$	Std Dev: $0.2586 \pm 0.0053$



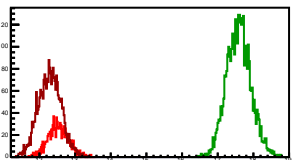
### Cycle 19, Diffs

Entries: 1704	Entries: 2932	Entries: 789
Mean: $0.0064 \pm 0.0062$	Mean: $0.0671 \pm 0.0056$	Mean: $0.0099 \pm 0.0093$
Std Dev: $0.2566 \pm 0.0044$	Std Dev: $0.3020 \pm 0.0039$	Std Dev: $0.2613 \pm 0.0066$



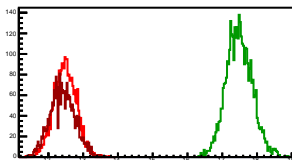
### Cycle 1, Sums

Entries: 994	Entries: 3710	Entries: 2619
Mean: 12.5267 $\pm$ 0.0093	Mean: 17.5907 $\pm$ 0.0056	Mean: 12.2899 $\pm$ 0.0062
Std Dev: 0.2935 $\pm$ 0.0066	Std Dev: 0.3426 $\pm$ 0.0040	Std Dev: 0.3166 $\pm$ 0.0044



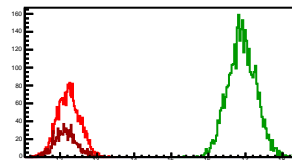
### Cycle 2, Sums

Entries: 2574	Entries: 3781	Entries: 2269
Mean: 12.4778 $\pm$ 0.0063	Mean: 17.4873 $\pm$ 0.0061	Mean: 12.4053 $\pm$ 0.0075
Std Dev: 0.3186 $\pm$ 0.0043	Std Dev: 0.3750 $\pm$ 0.0043	Std Dev: 0.3558 $\pm$ 0.0053



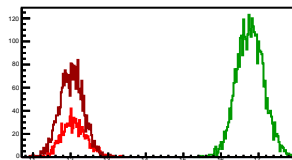
### Cycle 3, Sums

Entries: 2300	Entries: 3669	Entries: 973
Mean: 12.2313 $\pm$ 0.0064	Mean: 16.9030 $\pm$ 0.0062	Mean: 12.1502 $\pm$ 0.0096
Std Dev: 0.3064 $\pm$ 0.0045	Std Dev: 0.3778 $\pm$ 0.0044	Std Dev: 0.2996 $\pm$ 0.0068



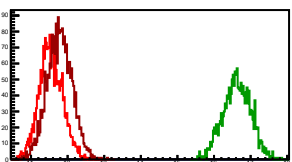
### Cycle 4, Sums

Entries: 991	Entries: 3638	Entries: 2287
Mean: 12.0939 $\pm$ 0.0102	Mean: 16.7763 $\pm$ 0.0060	Mean: 12.0213 $\pm$ 0.0066
Std Dev: 0.3213 $\pm$ 0.0072	Std Dev: 0.3591 $\pm$ 0.0042	Std Dev: 0.3172 $\pm$ 0.0047



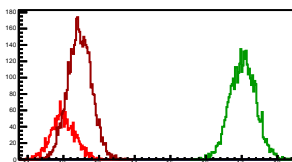
### Cycle 5, Sums

Entries: 2267	Entries: 1735	Entries: 2422
Mean: 11.5416 $\pm$ 0.0067	Mean: 16.6272 $\pm$ 0.0090	Mean: 11.7810 $\pm$ 0.0068
Std Dev: 0.3169 $\pm$ 0.0047	Std Dev: 0.3750 $\pm$ 0.0064	Std Dev: 0.3371 $\pm$ 0.0048



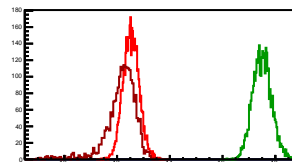
### Cycle 6, Sums

Entries: 1590	Entries: 3739	Entries: 4561
Mean: 11.9932 $\pm$ 0.0085	Mean: 17.0306 $\pm$ 0.0059	Mean: 12.4549 $\pm$ 0.0049
Std Dev: 0.3389 $\pm$ 0.0060	Std Dev: 0.3608 $\pm$ 0.0042	Std Dev: 0.3334 $\pm$ 0.0035



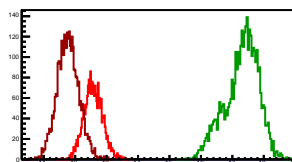
### Cycle 7, Sums

Entries: 4538	Entries: 3641	Entries: 2231
Mean: 12.5327 $\pm$ 0.0046	Mean: 17.5031 $\pm$ 0.0059	Mean: 12.1529 $\pm$ 0.0126
Std Dev: 0.3066 $\pm$ 0.0032	Std Dev: 0.3581 $\pm$ 0.0042	Std Dev: 0.5931 $\pm$ 0.0089



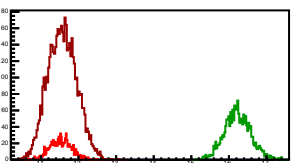
### Cycle 8, Sums

Entries: 2188	Entries: 3765	Entries: 3383
Mean: 12.5764 $\pm$ 0.0063	Mean: 17.2994 $\pm$ 0.0087	Mean: 11.7722 $\pm$ 0.0059
Std Dev: 0.2951 $\pm$ 0.0045	Std Dev: 0.5317 $\pm$ 0.0061	Std Dev: 0.3429 $\pm$ 0.0042



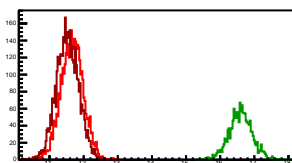
### Cycle 9, Sums

Entries: 825	Entries: 1888	Entries: 5099
Mean: 11.5245 $\pm$ 0.0100	Mean: 16.2311 $\pm$ 0.0081	Mean: 11.5671 $\pm$ 0.0053
Std Dev: 0.2872 $\pm$ 0.0071	Std Dev: 0.3535 $\pm$ 0.0058	Std Dev: 0.3805 $\pm$ 0.0039



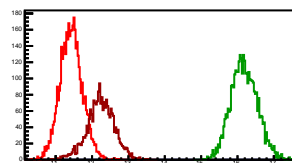
### Cycle 10, Sums

Entries: 3770	Entries: 3569	Entries: 4422
Mean: 11.6604 $\pm$ 0.0053	Mean: 16.5975 $\pm$ 0.0086	Mean: 11.5244 $\pm$ 0.0049
Std Dev: 0.3277 $\pm$ 0.0038	Std Dev: 0.3412 $\pm$ 0.0061	Std Dev: 0.3253 $\pm$ 0.0035



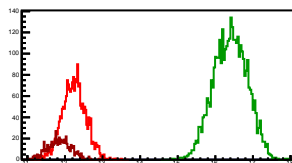
### Cycle 11, Sums

Entries: 4315	Entries: 3664	Entries: 2136
Mean: 11.4269 $\pm$ 0.0047	Mean: 16.1841 $\pm$ 0.0060	Mean: 12.2375 $\pm$ 0.0082
Std Dev: 0.3069 $\pm$ 0.0033	Std Dev: 0.3651 $\pm$ 0.0043	Std Dev: 0.3775 $\pm$ 0.0059



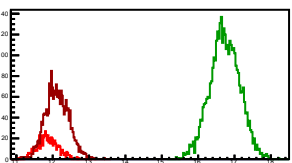
### Cycle 12, Sums

Entries: 2117	Entries: 3765	Entries: 641
Mean: 12.2404 $\pm$ 0.0067	Mean: 16.4006 $\pm$ 0.0073	Mean: 11.8434 $\pm$ 0.0121
Std Dev: 0.3094 $\pm$ 0.0048	Std Dev: 0.4458 $\pm$ 0.0051	Std Dev: 0.3059 $\pm$ 0.0085



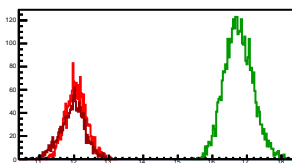
### Cycle 13, Sums

Entries: 628	Entries: 3762	Entries: 2014
Mean: 11.8643 $\pm$ 0.0116	Mean: 16.7311 $\pm$ 0.0067	Mean: 12.1220 $\pm$ 0.0071
Std Dev: 0.2902 $\pm$ 0.0082	Std Dev: 0.4113 $\pm$ 0.0047	Std Dev: 0.3185 $\pm$ 0.0050



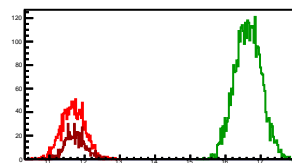
### Cycle 14, Sums

Entries: 2022	Entries: 3683	Entries: 1417
Mean: 11.0565 $\pm$ 0.0068	Mean: 16.5725 $\pm$ 0.0067	Mean: 11.9501 $\pm$ 0.0095
Std Dev: 0.3058 $\pm$ 0.0048	Std Dev: 0.4078 $\pm$ 0.0048	Std Dev: 0.3566 $\pm$ 0.0067



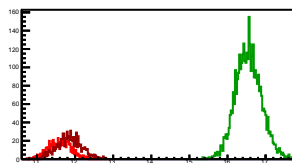
### Cycle 15, Sums

Entries: 1379	Entries: 3673	Entries: 740
Mean: 11.6763 $\pm$ 0.0089	Mean: 16.6394 $\pm$ 0.0062	Mean: 11.7326 $\pm$ 0.0103
Std Dev: 0.3311 $\pm$ 0.0063	Std Dev: 0.3767 $\pm$ 0.0044	Std Dev: 0.2791 $\pm$ 0.0073



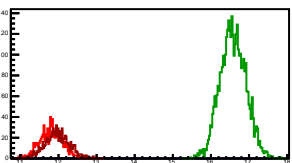
### Cycle 16, Sums

Entries: 715	Entries: 3681	Entries: 877
Mean: 11.5969 $\pm$ 0.0114	Mean: 16.5484 $\pm$ 0.0056	Mean: 11.8414 $\pm$ 0.0110
Std Dev: 0.3035 $\pm$ 0.0080	Std Dev: 0.3423 $\pm$ 0.0040	Std Dev: 0.3244 $\pm$ 0.0077



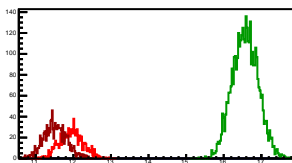
### Cycle 17, Sums

Entries: 838	Entries: 3770	Entries: 912
Mean: 11.8083 $\pm$ 0.0103	Mean: 16.5793 $\pm$ 0.0055	Mean: 11.9691 $\pm$ 0.0105
Std Dev: 0.2989 $\pm$ 0.0073	Std Dev: 0.3387 $\pm$ 0.0039	Std Dev: 0.3168 $\pm$ 0.0074



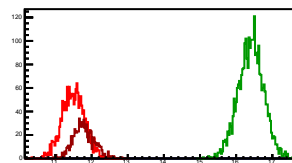
### Cycle 18, Sums

Entries: 890	Entries: 3754	Entries: 1209
Mean: 11.9451 $\pm$ 0.0105	Mean: 16.5725 $\pm$ 0.0056	Mean: 11.5146 $\pm$ 0.0087
Std Dev: 0.3118 $\pm$ 0.0074	Std Dev: 0.3445 $\pm$ 0.0040	Std Dev: 0.3015 $\pm$ 0.0061



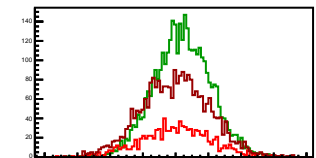
### Cycle 19, Sums

Entries: 1704	Entries: 2932	Entries: 789
Mean: 11.4951 $\pm$ 0.0075	Mean: 16.4083 $\pm$ 0.0065	Mean: 11.7808 $\pm$ 0.0102
Std Dev: 0.3103 $\pm$ 0.0053	Std Dev: 0.3504 $\pm$ 0.0046	Std Dev: 0.2870 $\pm$ 0.0072



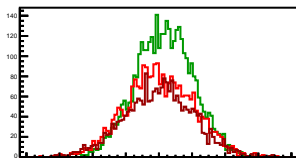
### Cycle 1, Asyms

Entries: 994	Entries: 3710	Entries: 2619
Mean: -0.0002 +/- 0.0007	Mean: 0.0041 +/- 0.0003	Mean: 0.0000 +/- 0.0004
Std Dev: 0.0210 +/- 0.0005	Std Dev: 0.0171 +/- 0.0002	Std Dev: 0.0207 +/- 0.0003



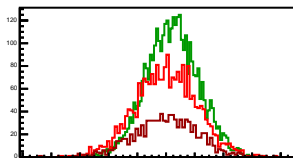
### Cycle 2, Asyms

Entries: 2574	Entries: 3781	Entries: 2269
Mean: 0.0004 +/- 0.0004	Mean: 0.0033 +/- 0.0003	Mean: 0.0001 +/- 0.0004
Std Dev: 0.0204 +/- 0.0003	Std Dev: 0.0174 +/- 0.0002	Std Dev: 0.0207 +/- 0.0003



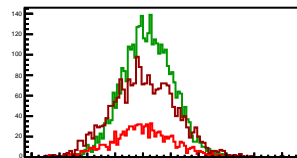
### Cycle 3, Asyms

Entries: 2300	Entries: 3669	Entries: 973
Mean: 0.0001 +/- 0.0004	Mean: 0.0043 +/- 0.0003	Mean: -0.0001 +/- 0.0007
Std Dev: 0.0215 +/- 0.0003	Std Dev: 0.0182 +/- 0.0002	Std Dev: 0.0219 +/- 0.0005



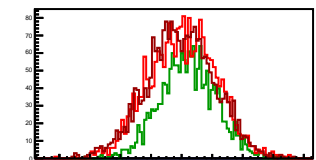
### Cycle 4, Asyms

Entries: 991	Entries: 3638	Entries: 2287
Mean: -0.0006 +/- 0.0007	Mean: 0.0035 +/- 0.0003	Mean: 0.0008 +/- 0.0005
Std Dev: 0.0217 +/- 0.0005	Std Dev: 0.0180 +/- 0.0002	Std Dev: 0.0228 +/- 0.0003



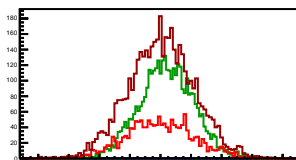
### Cycle 5, Asyms

Entries: 2267	Entries: 1735	Entries: 2422
Mean: 0.0007 +/- 0.0005	Mean: 0.0041 +/- 0.0004	Mean: -0.0008 +/- 0.0005
Std Dev: 0.0221 +/- 0.0003	Std Dev: 0.0183 +/- 0.0003	Std Dev: 0.0222 +/- 0.0003



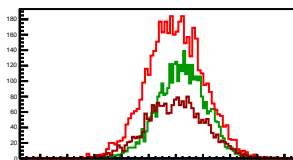
### Cycle 6, Asyms

Entries: 1590	Entries: 3739	Entries: 4561
Mean: -0.0003 +/- 0.0006	Mean: 0.0040 +/- 0.0003	Mean: 0.0005 +/- 0.0003
Std Dev: 0.0219 +/- 0.0004	Std Dev: 0.0179 +/- 0.0002	Std Dev: 0.0214 +/- 0.0002



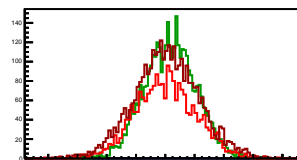
### Cycle 7, Asyms

Entries: 4538	Entries: 3641	Entries: 2231
Mean: -0.0004 +/- 0.0003	Mean: 0.0044 +/- 0.0003	Mean: -0.0001 +/- 0.0005
Std Dev: 0.0208 +/- 0.0002	Std Dev: 0.0177 +/- 0.0002	Std Dev: 0.0217 +/- 0.0003



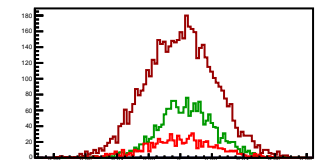
### Cycle 8, Asyms

Entries: 2188	Entries: 3765	Entries: 3383
Mean: 0.0002 +/- 0.0004	Mean: 0.0035 +/- 0.0003	Mean: 0.0006 +/- 0.0004
Std Dev: 0.0209 +/- 0.0003	Std Dev: 0.0176 +/- 0.0002	Std Dev: 0.0219 +/- 0.0003



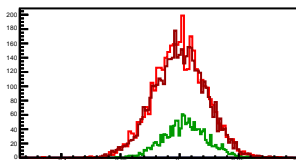
### Cycle 9, Asyms

Entries: 825	Entries: 1889	Entries: 5099
Mean: 0.0006 +/- 0.0008	Mean: 0.0038 +/- 0.0004	Mean: 0.0003 +/- 0.0003
Std Dev: 0.0219 +/- 0.0005	Std Dev: 0.0180 +/- 0.0003	Std Dev: 0.0221 +/- 0.0002



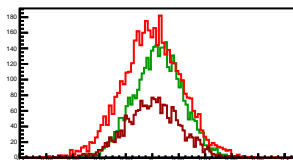
### Cycle 10, Asyms

Entries: 3776	Entries: 3659	Entries: 4422
Mean: 0.0001 +/- 0.0004	Mean: 0.0049 +/- 0.0005	Mean: 0.0003 +/- 0.0003
Std Dev: 0.0220 +/- 0.0003	Std Dev: 0.0183 +/- 0.0003	Std Dev: 0.0223 +/- 0.0002



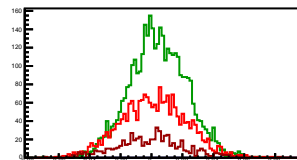
### Cycle 11, Asyms

Entries: 4315	Entries: 3684	Entries: 2136
Mean: -0.0002 +/- 0.0003	Mean: 0.0046 +/- 0.0003	Mean: 0.0005 +/- 0.0004
Std Dev: 0.0224 +/- 0.0002	Std Dev: 0.0186 +/- 0.0002	Std Dev: 0.0205 +/- 0.0003



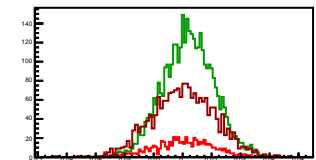
### Cycle 12, Asyms

Entries: 2117	Entries: 3765	Entries: 641
Mean: 0.0014 +/- 0.0005	Mean: 0.0042 +/- 0.0003	Mean: -0.0005 +/- 0.0009
Std Dev: 0.0214 +/- 0.0003	Std Dev: 0.0184 +/- 0.0002	Std Dev: 0.0221 +/- 0.0006



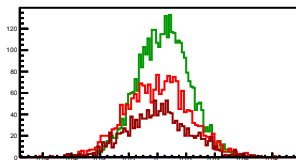
### Cycle 13, Asyms

Entries: 628	Entries: 3762	Entries: 2014
Mean: 0.0004 +/- 0.0008	Mean: 0.0041 +/- 0.0003	Mean: 0.0005 +/- 0.0005
Std Dev: 0.0209 +/- 0.0006	Std Dev: 0.0176 +/- 0.0002	Std Dev: 0.0215 +/- 0.0003



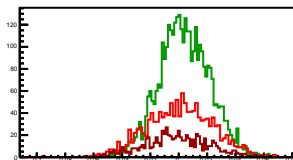
### Cycle 14, Asyms

Entries: 2022	Entries: 3683	Entries: 1417
Mean: -0.0003 +/- 0.0005	Mean: 0.0043 +/- 0.0003	Mean: -0.0002 +/- 0.0006
Std Dev: 0.0221 +/- 0.0003	Std Dev: 0.0180 +/- 0.0002	Std Dev: 0.0219 +/- 0.0004



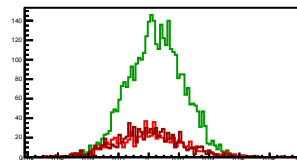
### Cycle 15, Asyms

Entries: 1379	Entries: 3673	Entries: 740
Mean: 0.0006 +/- 0.0006	Mean: 0.0040 +/- 0.0003	Mean: -0.0014 +/- 0.0008
Std Dev: 0.0231 +/- 0.0004	Std Dev: 0.0179 +/- 0.0002	Std Dev: 0.0222 +/- 0.0006



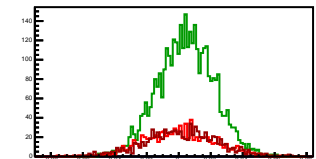
### Cycle 16, Asyms

Entries: 715	Entries: 3681	Entries: 877
Mean: -0.0002 +/- 0.0008	Mean: 0.0048 +/- 0.0003	Mean: -0.0004 +/- 0.0007
Std Dev: 0.0227 +/- 0.0006	Std Dev: 0.0182 +/- 0.0002	Std Dev: 0.0215 +/- 0.0005



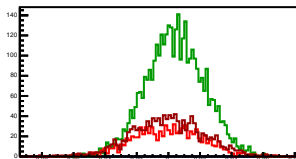
### Cycle 17, Asyms

Entries: 838	Entries: 3770	Entries: 912
Mean: 0.0003 +/- 0.0007	Mean: 0.0044 +/- 0.0003	Mean: 0.0011 +/- 0.0007
Std Dev: 0.0216 +/- 0.0005	Std Dev: 0.0176 +/- 0.0002	Std Dev: 0.0226 +/- 0.0005



### Cycle 18, Asyms

Entries: 890	Entries: 3754	Entries: 1209
Mean: -0.0003 +/- 0.0007	Mean: 0.0042 +/- 0.0003	Mean: -0.0002 +/- 0.0006
Std Dev: 0.0221 +/- 0.0005	Std Dev: 0.0184 +/- 0.0002	Std Dev: 0.0224 +/- 0.0005



### Cycle 19, Asyms

Entries: 1704	Entries: 2932	Entries: 789
Mean: 0.0006 +/- 0.0005	Mean: 0.0041 +/- 0.0003	Mean: 0.0008 +/- 0.0008
Std Dev: 0.0223 +/- 0.0004	Std Dev: 0.0184 +/- 0.0002	Std Dev: 0.0221 +/- 0.0006

