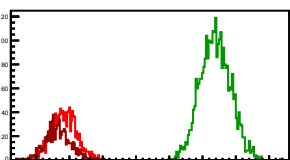
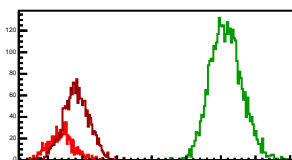


Cycle 1, PosHel

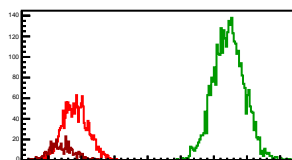
Entries: 1263	Entries: 3096	Entries: 811
Mean: 5.9212 +/- 0.0054	Mean: 8.1940 +/- 0.0041	Mean: 5.8291 +/- 0.0069
Std Dev: 0.1914 +/- 0.0038	Std Dev: 0.2279 +/- 0.0029	Std Dev: 0.1956 +/- 0.0049

**Cycle 2, PosHel**

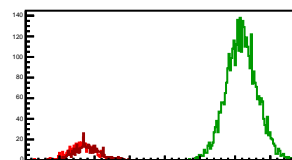
Entries: 851	Entries: 3726	Entries: 1835
Mean: 5.6915 +/- 0.0063	Mean: 8.0759 +/- 0.0038	Mean: 5.9108 +/- 0.0044
Std Dev: 0.1824 +/- 0.0044	Std Dev: 0.2295 +/- 0.0027	Std Dev: 0.1879 +/- 0.0031

**Cycle 3, PosHel**

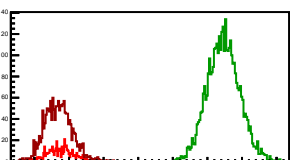
Entries: 1827	Entries: 3710	Entries: 457
Mean: 5.9127 +/- 0.0044	Mean: 8.2275 +/- 0.0038	Mean: 5.7063 +/- 0.0086
Std Dev: 0.1899 +/- 0.0031	Std Dev: 0.2344 +/- 0.0027	Std Dev: 0.1843 +/- 0.0061

**Cycle 4, PosHel**

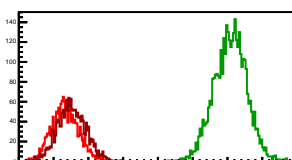
Entries: 457	Entries: 3778	Entries: 451
Mean: 5.8288 +/- 0.0084	Mean: 8.0951 +/- 0.0036	Mean: 5.8997 +/- 0.0086
Std Dev: 0.1803 +/- 0.0060	Std Dev: 0.2223 +/- 0.0026	Std Dev: 0.1830 +/- 0.0061

**Cycle 5, PosHel**

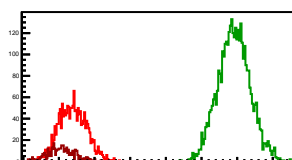
Entries: 451	Entries: 3789	Entries: 1652
Mean: 5.8689 +/- 0.0090	Mean: 8.2315 +/- 0.0038	Mean: 5.8475 +/- 0.0048
Std Dev: 0.1910 +/- 0.0054	Std Dev: 0.2315 +/- 0.0027	Std Dev: 0.1969 +/- 0.0034

**Cycle 6, PosHel**

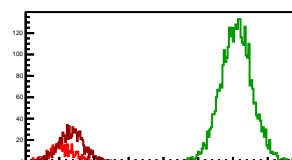
Entries: 1635	Entries: 3756	Entries: 1791
Mean: 5.6678 +/- 0.0048	Mean: 8.0396 +/- 0.0038	Mean: 5.7593 +/- 0.0048
Std Dev: 0.1553 +/- 0.0034	Std Dev: 0.2256 +/- 0.0027	Std Dev: 0.2027 +/- 0.0034

**Cycle 7, PosHel**

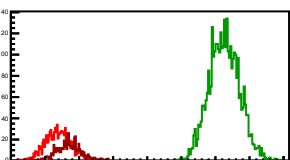
Entries: 1752	Entries: 3803	Entries: 461
Mean: 5.6926 +/- 0.0046	Mean: 7.9567 +/- 0.0036	Mean: 5.5315 +/- 0.0086
Std Dev: 0.1917 +/- 0.0032	Std Dev: 0.2233 +/- 0.0026	Std Dev: 0.1839 +/- 0.0061

**Cycle 8, PosHel**

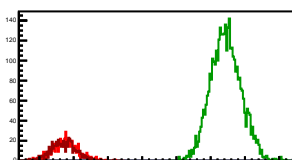
Entries: 447	Entries: 3773	Entries: 944
Mean: 5.5466 +/- 0.0080	Mean: 8.0488 +/- 0.0036	Mean: 5.6731 +/- 0.0057
Std Dev: 0.1701 +/- 0.0057	Std Dev: 0.2240 +/- 0.0026	Std Dev: 0.1766 +/- 0.0041

**Cycle 9, PosHel**

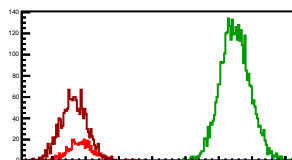
Entries: 900	Entries: 3697	Entries: 562
Mean: 5.6920 +/- 0.0059	Mean: 8.1307 +/- 0.0037	Mean: 5.8555 +/- 0.0075
Std Dev: 0.1855 +/- 0.0042	Std Dev: 0.2231 +/- 0.0026	Std Dev: 0.1789 +/- 0.0053

**Cycle 10, PosHel**

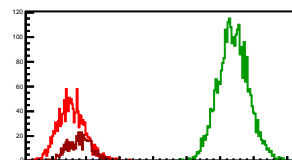
Entries: 561	Entries: 3677	Entries: 556
Mean: 5.8776 +/- 0.0080	Mean: 8.2219 +/- 0.0036	Mean: 5.8549 +/- 0.0079
Std Dev: 0.1897 +/- 0.0057	Std Dev: 0.2229 +/- 0.0026	Std Dev: 0.1854 +/- 0.0056

**Cycle 11, PosHel**

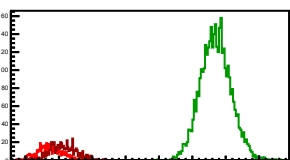
Entries: 559	Entries: 3739	Entries: 1588
Mean: 5.9320 +/- 0.0061	Mean: 8.2463 +/- 0.0037	Mean: 5.8197 +/- 0.0050
Std Dev: 0.1910 +/- 0.0057	Std Dev: 0.2248 +/- 0.0026	Std Dev: 0.1996 +/- 0.0035

**Cycle 12, PosHel**

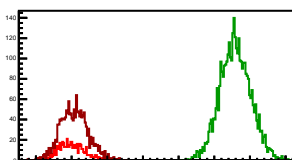
Entries: 1581	Entries: 2974	Entries: 556
Mean: 5.7783 +/- 0.0050	Mean: 8.1981 +/- 0.0042	Mean: 5.9092 +/- 0.0077
Std Dev: 0.1992 +/- 0.0035	Std Dev: 0.2271 +/- 0.0029	Std Dev: 0.1816 +/- 0.0053

**Cycle 13, PosHel**

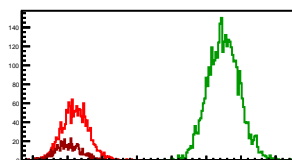
Entries: 560	Entries: 3799	Entries: 589
Mean: 5.8557 +/- 0.0076	Mean: 8.4243 +/- 0.0037	Mean: 6.0716 +/- 0.0081
Std Dev: 0.1808 +/- 0.0054	Std Dev: 0.2267 +/- 0.0026	Std Dev: 0.1955 +/- 0.0057

**Cycle 14, PosHel**

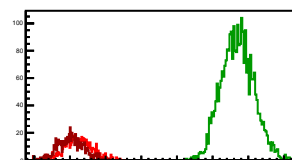
Entries: 582	Entries: 3674	Entries: 1596
Mean: 5.9831 +/- 0.0077	Mean: 8.2036 +/- 0.0035	Mean: 6.0333 +/- 0.0078
Std Dev: 0.1857 +/- 0.0054	Std Dev: 0.2145 +/- 0.0025	Std Dev: 0.1930 +/- 0.0034

**Cycle 15, PosHel**

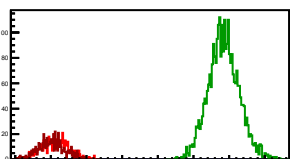
Entries: 1600	Entries: 3754	Entries: 580
Mean: 6.1112 +/- 0.0047	Mean: 8.2499 +/- 0.0037	Mean: 6.0053 +/- 0.0076
Std Dev: 0.1897 +/- 0.0034	Std Dev: 0.2266 +/- 0.0026	Std Dev: 0.1829 +/- 0.0054

**Cycle 16, PosHel**

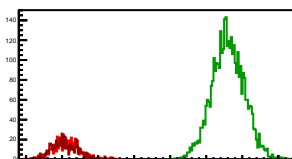
Entries: 580	Entries: 2915	Entries: 576
Mean: 6.1193 +/- 0.0081	Mean: 8.3497 +/- 0.0042	Mean: 6.0085 +/- 0.0075
Std Dev: 0.1948 +/- 0.0057	Std Dev: 0.2257 +/- 0.0030	Std Dev: 0.1798 +/- 0.0053

**Cycle 17, PosHel**

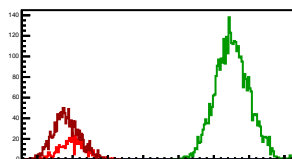
Entries: 577	Entries: 2984	Entries: 575
Mean: 6.0618 +/- 0.0080	Mean: 8.4243 +/- 0.0040	Mean: 6.0084 +/- 0.0078
Std Dev: 0.1931 +/- 0.0057	Std Dev: 0.2165 +/- 0.0028	Std Dev: 0.1866 +/- 0.0055

**Cycle 18, PosHel**

Entries: 574	Entries: 3706	Entries: 582
Mean: 6.0591 +/- 0.0078	Mean: 8.3036 +/- 0.0037	Mean: 6.0333 +/- 0.0075
Std Dev: 0.1871 +/- 0.0055	Std Dev: 0.2252 +/- 0.0026	Std Dev: 0.1813 +/- 0.0053

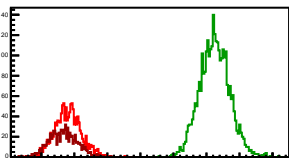
**Cycle 19, PosHel**

Entries: 582	Entries: 3753	Entries: 1524
Mean: 6.0050 +/- 0.0077	Mean: 8.2811 +/- 0.0039	Mean: 5.9147 +/- 0.0048
Std Dev: 0.1866 +/- 0.0055	Std Dev: 0.2305 +/- 0.0028	Std Dev: 0.1875 +/- 0.0034

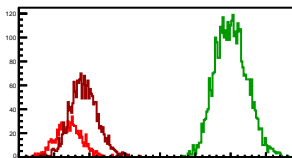


Cycle 1, NegHel

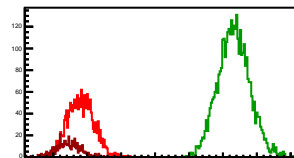
Entries: 1263	Entries: 3096	Entries: 811
Mean: 5.9074 +/- 0.0056	Mean: 8.1244 +/- 0.0041	Mean: 5.8279 +/- 0.0074
Std Dev: 0.2000 +/- 0.0040	Std Dev: 0.2260 +/- 0.0029	Std Dev: 0.2100 +/- 0.0052

**Cycle 2, NegHel**

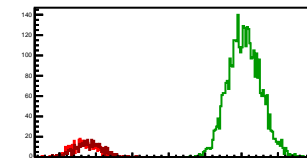
Entries: 851	Entries: 3726	Entries: 1835
Mean: 5.7071 +/- 0.0064	Mean: 8.0061 +/- 0.0037	Mean: 5.9218 +/- 0.0045
Std Dev: 0.1876 +/- 0.0045	Std Dev: 0.2266 +/- 0.0026	Std Dev: 0.1941 +/- 0.0032

**Cycle 3, NegHel**

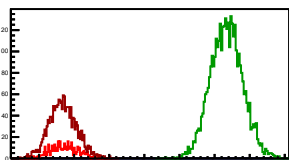
Entries: 1827	Entries: 3710	Entries: 457
Mean: 5.9056 +/- 0.0045	Mean: 8.1609 +/- 0.0038	Mean: 5.7139 +/- 0.0084
Std Dev: 0.1917 +/- 0.0032	Std Dev: 0.2335 +/- 0.0027	Std Dev: 0.1794 +/- 0.0059

**Cycle 4, NegHel**

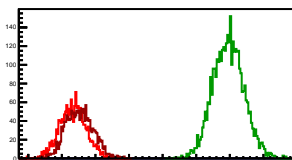
Entries: 457	Entries: 3778	Entries: 451
Mean: 5.8265 +/- 0.0082	Mean: 8.0380 +/- 0.0036	Mean: 5.9046 +/- 0.0090
Std Dev: 0.1751 +/- 0.0058	Std Dev: 0.2219 +/- 0.0026	Std Dev: 0.1917 +/- 0.0064

**Cycle 5, NegHel**

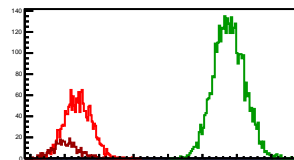
Entries: 451	Entries: 3789	Entries: 1652
Mean: 5.8633 +/- 0.0091	Mean: 8.1700 +/- 0.0037	Mean: 5.8408 +/- 0.0048
Std Dev: 0.1942 +/- 0.0065	Std Dev: 0.2274 +/- 0.0026	Std Dev: 0.1955 +/- 0.0034

**Cycle 6, NegHel**

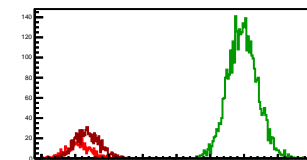
Entries: 1635	Entries: 3756	Entries: 1791
Mean: 5.6670 +/- 0.0049	Mean: 7.9799 +/- 0.0038	Mean: 5.7608 +/- 0.0048
Std Dev: 0.1567 +/- 0.0034	Std Dev: 0.2203 +/- 0.0027	Std Dev: 0.2011 +/- 0.0034

**Cycle 7, NegHel**

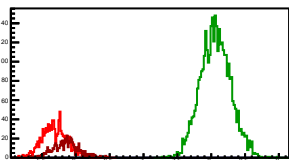
Entries: 1752	Entries: 3803	Entries: 461
Mean: 5.6924 +/- 0.0046	Mean: 7.8867 +/- 0.0028	Mean: 5.5153 +/- 0.0087
Std Dev: 0.1915 +/- 0.0032	Std Dev: 0.2248 +/- 0.0026	Std Dev: 0.1860 +/- 0.0061

**Cycle 8, NegHel**

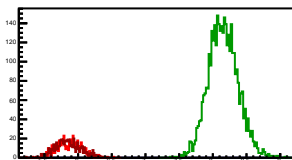
Entries: 447	Entries: 3773	Entries: 944
Mean: 5.5451 +/- 0.0087	Mean: 7.9788 +/- 0.0036	Mean: 5.6804 +/- 0.0060
Std Dev: 0.1842 +/- 0.0062	Std Dev: 0.2217 +/- 0.0025	Std Dev: 0.1838 +/- 0.0042

**Cycle 9, NegHel**

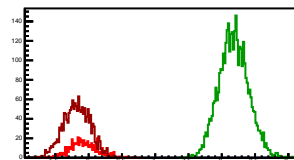
Entries: 900	Entries: 3697	Entries: 562
Mean: 5.6862 +/- 0.0059	Mean: 8.0636 +/- 0.0037	Mean: 5.8562 +/- 0.0080
Std Dev: 0.1849 +/- 0.0042	Std Dev: 0.2229 +/- 0.0026	Std Dev: 0.1907 +/- 0.0057

**Cycle 10, NegHel**

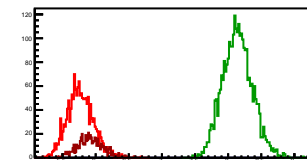
Entries: 561	Entries: 3767	Entries: 556
Mean: 5.6897 +/- 0.0077	Mean: 8.1567 +/- 0.0036	Mean: 5.8532 +/- 0.0081
Std Dev: 0.1824 +/- 0.0054	Std Dev: 0.2218 +/- 0.0026	Std Dev: 0.1898 +/- 0.0057

**Cycle 11, NegHel**

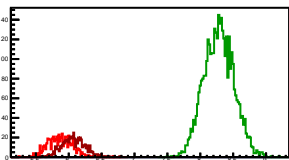
Entries: 559	Entries: 3739	Entries: 1588
Mean: 5.9253 +/- 0.0086	Mean: 8.1791 +/- 0.0036	Mean: 5.8218 +/- 0.0051
Std Dev: 0.2027 +/- 0.0061	Std Dev: 0.2209 +/- 0.0026	Std Dev: 0.2025 +/- 0.0036

**Cycle 12, NegHel**

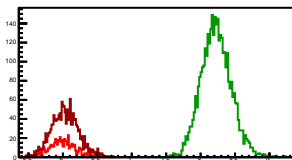
Entries: 1581	Entries: 2974	Entries: 556
Mean: 5.7678 +/- 0.0050	Mean: 8.1395 +/- 0.0041	Mean: 5.9190 +/- 0.0062
Std Dev: 0.1978 +/- 0.0035	Std Dev: 0.2229 +/- 0.0029	Std Dev: 0.1938 +/- 0.0058

**Cycle 13, NegHel**

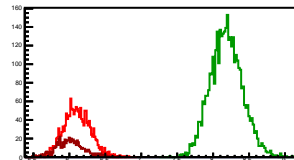
Entries: 560	Entries: 3799	Entries: 589
Mean: 5.8688 +/- 0.0079	Mean: 8.2832 +/- 0.0037	Mean: 6.0724 +/- 0.0074
Std Dev: 0.1866 +/- 0.0056	Std Dev: 0.2279 +/- 0.0026	Std Dev: 0.1803 +/- 0.0053

**Cycle 14, NegHel**

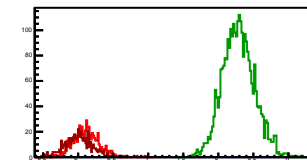
Entries: 582	Entries: 3674	Entries: 1596
Mean: 5.9918 +/- 0.0078	Mean: 8.2294 +/- 0.0036	Mean: 6.0325 +/- 0.0049
Std Dev: 0.1887 +/- 0.0055	Std Dev: 0.2179 +/- 0.0025	Std Dev: 0.1959 +/- 0.0035

**Cycle 15, NegHel**

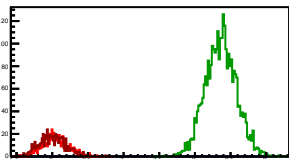
Entries: 1600	Entries: 3754	Entries: 580
Mean: 6.1076 +/- 0.0047	Mean: 8.1851 +/- 0.0037	Mean: 6.0113 +/- 0.0080
Std Dev: 0.1873 +/- 0.0033	Std Dev: 0.2240 +/- 0.0026	Std Dev: 0.1930 +/- 0.0057

**Cycle 16, NegHel**

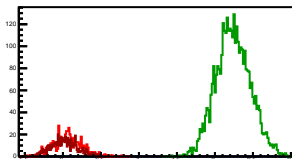
Entries: 580	Entries: 2915	Entries: 576
Mean: 6.1116 +/- 0.0077	Mean: 8.2890 +/- 0.0042	Mean: 6.0080 +/- 0.0079
Std Dev: 0.1860 +/- 0.0055	Std Dev: 0.2283 +/- 0.0030	Std Dev: 0.1889 +/- 0.0056

**Cycle 17, NegHel**

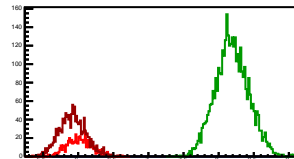
Entries: 577	Entries: 2984	Entries: 575
Mean: 6.0459 +/- 0.0076	Mean: 8.3638 +/- 0.0040	Mean: 6.0018 +/- 0.0077
Std Dev: 0.1819 +/- 0.0054	Std Dev: 0.2172 +/- 0.0028	Std Dev: 0.1838 +/- 0.0054

**Cycle 18, NegHel**

Entries: 574	Entries: 3706	Entries: 582
Mean: 6.0565 +/- 0.0078	Mean: 8.2394 +/- 0.0037	Mean: 6.0209 +/- 0.0072
Std Dev: 0.1904 +/- 0.0056	Std Dev: 0.2258 +/- 0.0026	Std Dev: 0.1734 +/- 0.0051

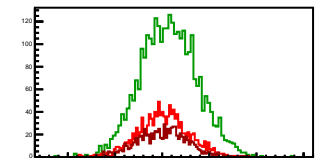
**Cycle 19, NegHel**

Entries: 582	Entries: 3753	Entries: 1524
Mean: 6.0165 +/- 0.0078	Mean: 8.1895 +/- 0.0039	Mean: 5.9204 +/- 0.0048
Std Dev: 0.1862 +/- 0.0055	Std Dev: 0.2263 +/- 0.0027	Std Dev: 0.1882 +/- 0.0034



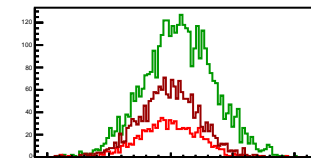
Cycle 1, Diffs

Entries: 1263	Entries: 3096	Entries: 811
Mean: 0.0138 +/- 0.0073	Mean: 0.0695 +/- 0.0054	Mean: 0.0012 +/- 0.0092
Std Dev: 0.2607 +/- 0.0052	Std Dev: 0.2997 +/- 0.0038	Std Dev: 0.2630 +/- 0.0065



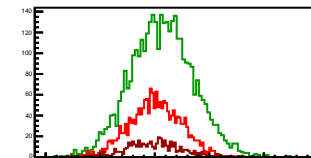
Cycle 2, Diffs

Entries: 851	Entries: 3726	Entries: 1835
Mean: -0.0157 +/- 0.0081	Mean: 0.0677 +/- 0.0046	Mean: -0.0109 +/- 0.0056
Std Dev: 0.2370 +/- 0.0057	Std Dev: 0.2822 +/- 0.0033	Std Dev: 0.2379 +/- 0.0039



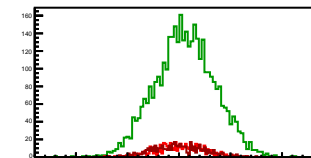
Cycle 3, Diffs

Entries: 1827	Entries: 3710	Entries: 457
Mean: 0.0071 +/- 0.0056	Mean: 0.0666 +/- 0.0047	Mean: -0.0076 +/- 0.0115
Std Dev: 0.2374 +/- 0.0039	Std Dev: 0.2876 +/- 0.0033	Std Dev: 0.2455 +/- 0.0081



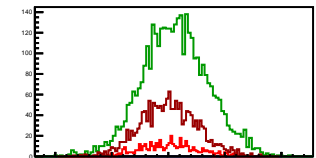
Cycle 4, Diffs

Entries: 457	Entries: 3778	Entries: 451
Mean: 0.0023 +/- 0.0109	Mean: 0.0572 +/- 0.0047	Mean: -0.0049 +/- 0.0116
Std Dev: 0.2332 +/- 0.0077	Std Dev: 0.2888 +/- 0.0033	Std Dev: 0.2469 +/- 0.0082



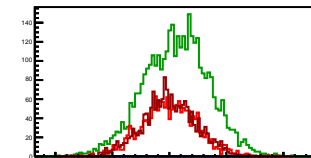
Cycle 5, Diffs

Entries: 451	Entries: 3789	Entries: 1652
Mean: 0.0057 +/- 0.0117	Mean: 0.0615 +/- 0.0047	Mean: 0.0067 +/- 0.0062
Std Dev: 0.2490 +/- 0.0083	Std Dev: 0.2913 +/- 0.0033	Std Dev: 0.2512 +/- 0.0044



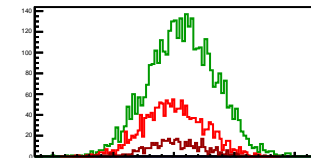
Cycle 6, Diffs

Entries: 1635	Entries: 3756	Entries: 1791
Mean: 0.0009 +/- 0.0060	Mean: 0.0598 +/- 0.0047	Mean: -0.0015 +/- 0.0056
Std Dev: 0.2432 +/- 0.0043	Std Dev: 0.2877 +/- 0.0033	Std Dev: 0.2373 +/- 0.0040



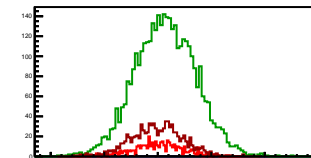
Cycle 7, Diffs

Entries: 1752	Entries: 3803	Entries: 461
Mean: 0.0002 +/- 0.0059	Mean: 0.0700 +/- 0.0045	Mean: 0.0162 +/- 0.0108
Std Dev: 0.2475 +/- 0.0042	Std Dev: 0.2767 +/- 0.0032	Std Dev: 0.2322 +/- 0.0076



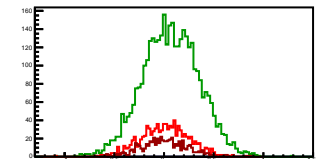
Cycle 8, Diffs

Entries: 447	Entries: 3773	Entries: 944
Mean: 0.0005 +/- 0.0114	Mean: 0.0700 +/- 0.0046	Mean: -0.0073 +/- 0.0078
Std Dev: 0.2408 +/- 0.0081	Std Dev: 0.2841 +/- 0.0033	Std Dev: 0.2391 +/- 0.0055



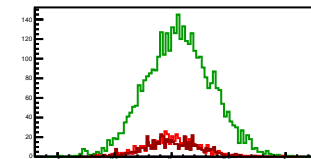
Cycle 9, Diffs

Entries: 900	Entries: 3697	Entries: 562
Mean: 0.0058 +/- 0.0077	Mean: 0.0671 +/- 0.0047	Mean: -0.0007 +/- 0.0098
Std Dev: 0.2424 +/- 0.0055	Std Dev: 0.2869 +/- 0.0033	Std Dev: 0.2323 +/- 0.0069



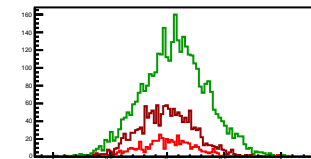
Cycle 10, Diffs

Entries: 561	Entries: 3767	Entries: 556
Mean: 0.0080 +/- 0.0100	Mean: 0.0651 +/- 0.0047	Mean: 0.0017 +/- 0.0104
Std Dev: 0.2375 +/- 0.0071	Std Dev: 0.2902 +/- 0.0033	Std Dev: 0.2448 +/- 0.0073



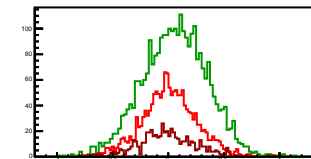
Cycle 11, Diffs

Entries: 559	Entries: 3739	Entries: 1588
Mean: -0.0002 +/- 0.0103	Mean: 0.0672 +/- 0.0047	Mean: -0.0021 +/- 0.0062
Std Dev: 0.2435 +/- 0.0073	Std Dev: 0.2887 +/- 0.0033	Std Dev: 0.2455 +/- 0.0044



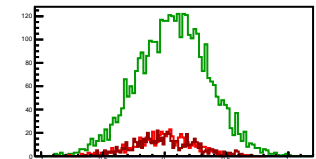
Cycle 12, Diffs

Entries: 1581	Entries: 2974	Entries: 556
Mean: 0.0104 +/- 0.0061	Mean: 0.0586 +/- 0.0053	Mean: -0.0098 +/- 0.0107
Std Dev: 0.2412 +/- 0.0043	Std Dev: 0.2915 +/- 0.0038	Std Dev: 0.2351 +/- 0.0076



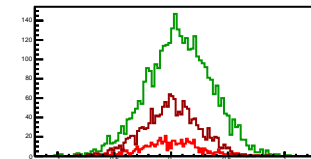
Cycle 13, Diffs

Entries: 560	Entries: 3799	Entries: 589
Mean: -0.0132 +/- 0.0101	Mean: 0.0670 +/- 0.0047	Mean: 0.0068 +/- 0.0103
Std Dev: 0.2394 +/- 0.0072	Std Dev: 0.2885 +/- 0.0033	Std Dev: 0.2490 +/- 0.0073



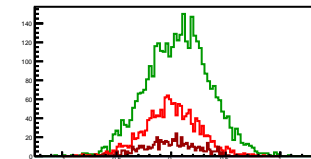
Cycle 14, Diffs

Entries: 582	Entries: 3674	Entries: 1596
Mean: -0.0087 +/- 0.0103	Mean: 0.0697 +/- 0.0048	Mean: 0.0025 +/- 0.0062
Std Dev: 0.2484 +/- 0.0073	Std Dev: 0.2883 +/- 0.0034	Std Dev: 0.2464 +/- 0.0044



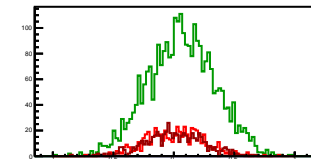
Cycle 15, Diffs

Entries: 1600	Entries: 3754	Entries: 580
Mean: 0.0005 +/- 0.0062	Mean: 0.0648 +/- 0.0047	Mean: -0.0060 +/- 0.0099
Std Dev: 0.2463 +/- 0.0044	Std Dev: 0.2888 +/- 0.0033	Std Dev: 0.2386 +/- 0.0070



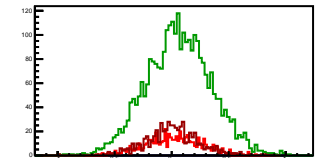
Cycle 16, Diffs

Entries: 580	Entries: 2915	Entries: 576
Mean: 0.0077 +/- 0.0103	Mean: 0.0617 +/- 0.0051	Mean: 0.0005 +/- 0.0100
Std Dev: 0.2483 +/- 0.0073	Std Dev: 0.2774 +/- 0.0036	Std Dev: 0.2401 +/- 0.0071



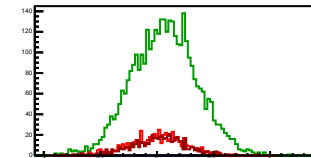
Cycle 17, Diffs

Entries: 577	Entries: 2984	Entries: 575
Mean: 0.0159 +/- 0.0104	Mean: 0.0605 +/- 0.0052	Mean: 0.0066 +/- 0.0097
Std Dev: 0.2494 +/- 0.0073	Std Dev: 0.2859 +/- 0.0037	Std Dev: 0.2320 +/- 0.0069



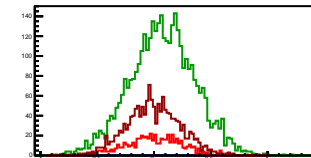
Cycle 18, Diffs

Entries: 574	Entries: 3706	Entries: 582
Mean: 0.0005 +/- 0.0105	Mean: 0.0642 +/- 0.0047	Mean: 0.0123 +/- 0.0099
Std Dev: 0.2516 +/- 0.0074	Std Dev: 0.2861 +/- 0.0033	Std Dev: 0.2378 +/- 0.0070



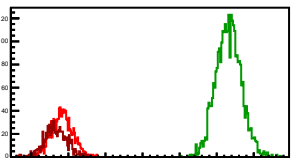
Cycle 19, Diffs

Entries: 582	Entries: 3753	Entries: 1524
Mean: -0.0116 +/- 0.0103	Mean: 0.0715 +/- 0.0047	Mean: -0.0057 +/- 0.0061
Std Dev: 0.2493 +/- 0.0073	Std Dev: 0.2871 +/- 0.0033	Std Dev: 0.2364 +/- 0.0043



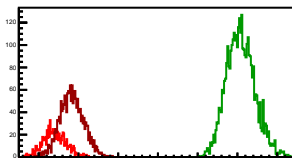
Cycle 1, Sums

Entries: 1263	Entries: 3096	Entries: 811
Mean: 11.8285 \pm 0.0082	Mean: 16.3184 \pm 0.0061	Mean: 11.6569 \pm 0.0109
Std Dev: 0.2920 \pm 0.0058	Std Dev: 0.3408 \pm 0.0043	Std Dev: 0.3091 \pm 0.0077



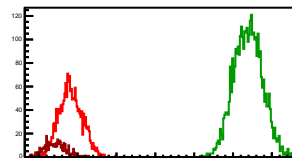
Cycle 2, Sums

Entries: 851	Entries: 3726	Entries: 1835
Mean: 11.3986 \pm 0.0097	Mean: 16.0840 \pm 0.0059	Mean: 11.8326 \pm 0.0070
Std Dev: 0.2843 \pm 0.0069	Std Dev: 0.3583 \pm 0.0042	Std Dev: 0.2990 \pm 0.0049



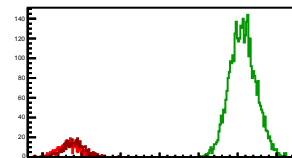
Cycle 3, Sums

Entries: 1827	Entries: 3710	Entries: 457
Mean: 11.8183 \pm 0.0070	Mean: 16.3883 \pm 0.0061	Mean: 11.4202 \pm 0.0126
Std Dev: 0.2988 \pm 0.0049	Std Dev: 0.3691 \pm 0.0043	Std Dev: 0.2684 \pm 0.0089



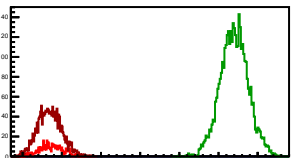
Cycle 4, Sums

Entries: 457	Entries: 3778	Entries: 451
Mean: 11.6552 \pm 0.0125	Mean: 16.1331 \pm 0.0055	Mean: 11.8043 \pm 0.0133
Std Dev: 0.2683 \pm 0.0089	Std Dev: 0.3376 \pm 0.0039	Std Dev: 0.2821 \pm 0.0094



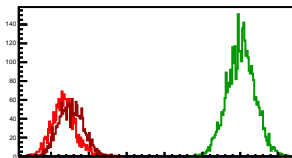
Cycle 5, Sums

Entries: 451	Entries: 3789	Entries: 1652
Mean: 11.7322 \pm 0.0138	Mean: 16.4015 \pm 0.0058	Mean: 11.6883 \pm 0.0074
Std Dev: 0.2939 \pm 0.0098	Std Dev: 0.3547 \pm 0.0041	Std Dev: 0.3016 \pm 0.0052



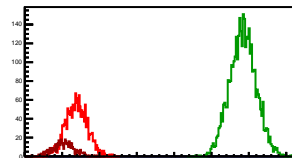
Cycle 6, Sums

Entries: 1635	Entries: 3756	Entries: 1791
Mean: 11.3348 \pm 0.0076	Mean: 16.0195 \pm 0.0060	Mean: 11.5200 \pm 0.0077
Std Dev: 0.3075 \pm 0.0054	Std Dev: 0.3664 \pm 0.0042	Std Dev: 0.3268 \pm 0.0055



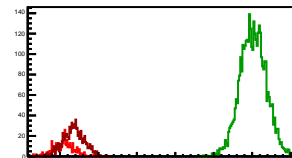
Cycle 7, Sums

Entries: 1752	Entries: 3803	Entries: 461
Mean: 11.3850 \pm 0.0070	Mean: 15.8434 \pm 0.0057	Mean: 11.0468 \pm 0.0134
Std Dev: 0.2926 \pm 0.0049	Std Dev: 0.3531 \pm 0.0040	Std Dev: 0.2879 \pm 0.0095



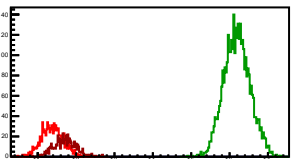
Cycle 8, Sums

Entries: 447	Entries: 3773	Entries: 944
Mean: 11.0926 \pm 0.0123	Mean: 16.0275 \pm 0.0055	Mean: 11.3555 \pm 0.0088
Std Dev: 0.2602 \pm 0.0087	Std Dev: 0.3409 \pm 0.0039	Std Dev: 0.2697 \pm 0.0082



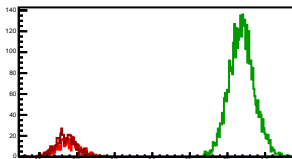
Cycle 9, Sums

Entries: 900	Entries: 3697	Entries: 562
Mean: 11.3782 \pm 0.0089	Mean: 16.1942 \pm 0.0056	Mean: 11.7117 \pm 0.0121
Std Dev: 0.2801 \pm 0.0063	Std Dev: 0.3415 \pm 0.0040	Std Dev: 0.2877 \pm 0.0086



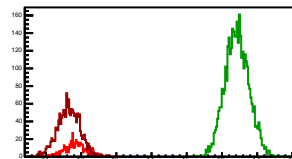
Cycle 10, Sums

Entries: 561	Entries: 3767	Entries: 556
Mean: 11.7473 \pm 0.0121	Mean: 16.3786 \pm 0.0055	Mean: 11.7081 \pm 0.0121
Std Dev: 0.2866 \pm 0.0086	Std Dev: 0.3369 \pm 0.0039	Std Dev: 0.2844 \pm 0.0085



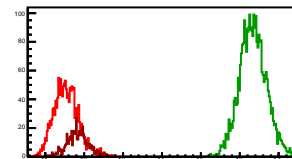
Cycle 11, Sums

Entries: 559	Entries: 3739	Entries: 1588
Mean: 11.8503 \pm 0.0131	Mean: 16.4254 \pm 0.0056	Mean: 11.6415 \pm 0.0080
Std Dev: 0.2996 \pm 0.0093	Std Dev: 0.3395 \pm 0.0039	Std Dev: 0.3184 \pm 0.0056



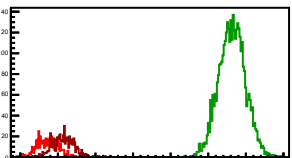
Cycle 12, Sums

Entries: 1581	Entries: 2974	Entries: 556
Mean: 11.5461 \pm 0.0079	Mean: 16.3376 \pm 0.0063	Mean: 11.8282 \pm 0.0118
Std Dev: 0.3154 \pm 0.0056	Std Dev: 0.3427 \pm 0.0044	Std Dev: 0.2777 \pm 0.0083



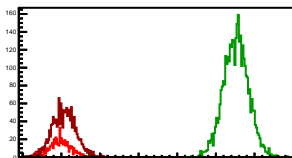
Cycle 13, Sums

Entries: 560	Entries: 3799	Entries: 589
Mean: 11.7245 \pm 0.0118	Mean: 16.6334 \pm 0.0060	Mean: 12.1441 \pm 0.0116
Std Dev: 0.2787 \pm 0.0083	Std Dev: 0.3513 \pm 0.0040	Std Dev: 0.2819 \pm 0.0082



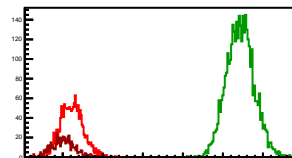
Cycle 14, Sums

Entries: 582	Entries: 3674	Entries: 1596
Mean: 11.7478 \pm 0.0116	Mean: 16.5203 \pm 0.0053	Mean: 12.0675 \pm 0.0075
Std Dev: 0.2801 \pm 0.0082	Std Dev: 0.3223 \pm 0.0038	Std Dev: 0.3009 \pm 0.0053



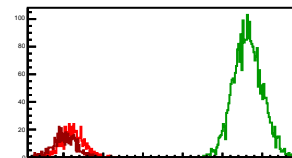
Cycle 15, Sums

Entries: 1600	Entries: 3754	Entries: 580
Mean: 12.2182 \pm 0.0071	Mean: 16.4351 \pm 0.0056	Mean: 12.0165 \pm 0.0121
Std Dev: 0.2854 \pm 0.0050	Std Dev: 0.3459 \pm 0.0040	Std Dev: 0.2906 \pm 0.0085



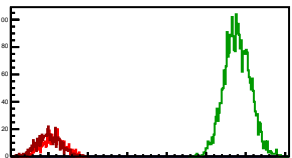
Cycle 16, Sums

Entries: 580	Entries: 2915	Entries: 576
Mean: 12.2309 \pm 0.0120	Mean: 16.6376 \pm 0.0067	Mean: 12.0165 \pm 0.0117
Std Dev: 0.2888 \pm 0.0085	Std Dev: 0.3594 \pm 0.0047	Std Dev: 0.2800 \pm 0.0082



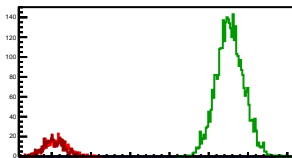
Cycle 17, Sums

Entries: 577	Entries: 2984	Entries: 575
Mean: 12.1077 \pm 0.0117	Mean: 16.7881 \pm 0.0060	Mean: 12.0101 \pm 0.0120
Std Dev: 0.2802 \pm 0.0082	Std Dev: 0.3262 \pm 0.0042	Std Dev: 0.2888 \pm 0.0085



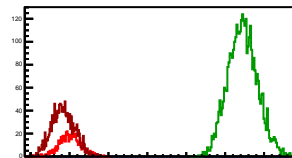
Cycle 18, Sums

Entries: 574	Entries: 3706	Entries: 582
Mean: 12.1176 \pm 0.0117	Mean: 16.5430 \pm 0.0057	Mean: 12.0542 \pm 0.0109
Std Dev: 0.2815 \pm 0.0083	Std Dev: 0.3486 \pm 0.0040	Std Dev: 0.2633 \pm 0.0077



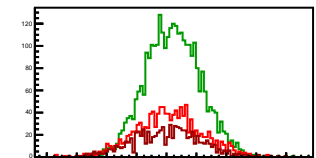
Cycle 19, Sums

Entries: 582	Entries: 3753	Entries: 1524
Mean: 12.0215 \pm 0.0116	Mean: 16.4506 \pm 0.0062	Mean: 11.8352 \pm 0.0075
Std Dev: 0.2798 \pm 0.0082	Std Dev: 0.3781 \pm 0.0044	Std Dev: 0.2921 \pm 0.0053



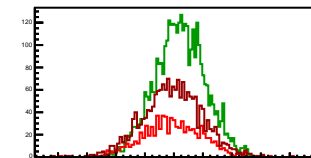
Cycle 1, Asyms

Entries: 1263	Entries: 3096	Entries: 811
Mean: 0.0012 +/- 0.0006	Mean: 0.0043 +/- 0.0003	Mean: 0.0001 +/- 0.0008
Std Dev: 0.0220 +/- 0.0004	Std Dev: 0.0183 +/- 0.0002	Std Dev: 0.0225 +/- 0.0006



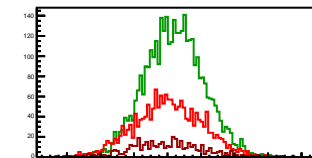
Cycle 2, Asyms

Entries: 851	Entries: 3726	Entries: 1835
Mean: -0.0014 +/- 0.0007	Mean: 0.0042 +/- 0.0003	Mean: -0.0009 +/- 0.0005
Std Dev: 0.0208 +/- 0.0005	Std Dev: 0.0175 +/- 0.0002	Std Dev: 0.0201 +/- 0.0003



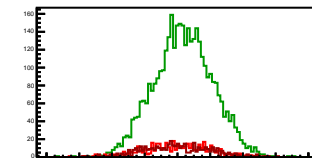
Cycle 3, Asyms

Entries: 1827	Entries: 3710	Entries: 457
Mean: 0.0006 +/- 0.0005	Mean: 0.0041 +/- 0.0003	Mean: -0.0007 +/- 0.0010
Std Dev: 0.0200 +/- 0.0003	Std Dev: 0.0175 +/- 0.0002	Std Dev: 0.0215 +/- 0.0007



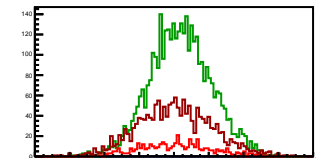
Cycle 4, Asyms

Entries: 457	Entries: 3778	Entries: 451
Mean: 0.0002 +/- 0.0009	Mean: 0.0035 +/- 0.0003	Mean: -0.0004 +/- 0.0010
Std Dev: 0.0200 +/- 0.0007	Std Dev: 0.0179 +/- 0.0002	Std Dev: 0.0209 +/- 0.0007



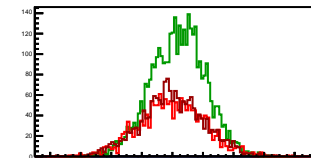
Cycle 5, Asyms

Entries: 451	Entries: 3789	Entries: 1652
Mean: 0.0005 +/- 0.0010	Mean: 0.0037 +/- 0.0003	Mean: 0.0006 +/- 0.0005
Std Dev: 0.0212 +/- 0.0007	Std Dev: 0.0177 +/- 0.0002	Std Dev: 0.0214 +/- 0.0004



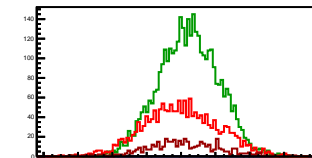
Cycle 6, Asyms

Entries: 1635	Entries: 3756	Entries: 1791
Mean: 0.0001 +/- 0.0005	Mean: 0.0037 +/- 0.0003	Mean: -0.0001 +/- 0.0005
Std Dev: 0.0214 +/- 0.0004	Std Dev: 0.0180 +/- 0.0002	Std Dev: 0.0206 +/- 0.0003



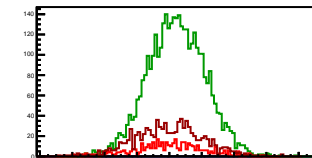
Cycle 7, Asyms

Entries: 1752	Entries: 3803	Entries: 461
Mean: 0.0000 +/- 0.0005	Mean: 0.0044 +/- 0.0003	Mean: 0.0015 +/- 0.0010
Std Dev: 0.0217 +/- 0.0004	Std Dev: 0.0174 +/- 0.0002	Std Dev: 0.0210 +/- 0.0007



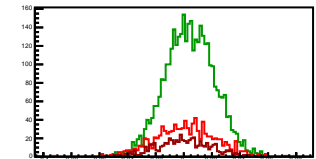
Cycle 8, Asyms

Entries: 447	Entries: 3773	Entries: 944
Mean: 0.0001 +/- 0.0010	Mean: 0.0044 +/- 0.0003	Mean: -0.0006 +/- 0.0007
Std Dev: 0.0216 +/- 0.0007	Std Dev: 0.0177 +/- 0.0002	Std Dev: 0.0210 +/- 0.0005



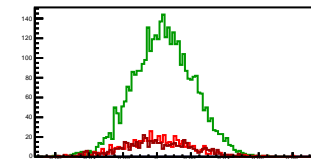
Cycle 9, Asyms

Entries: 900	Entries: 3697	Entries: 562
Mean: 0.0005 +/- 0.0007	Mean: 0.0041 +/- 0.0003	Mean: -0.0000 +/- 0.0008
Std Dev: 0.0213 +/- 0.0005	Std Dev: 0.0177 +/- 0.0002	Std Dev: 0.0198 +/- 0.0006



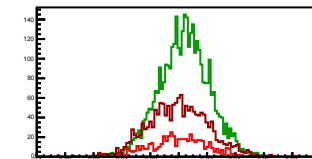
Cycle 10, Asyms

Entries: 561	Entries: 3767	Entries: 556
Mean: 0.0007 +/- 0.0009	Mean: 0.0040 +/- 0.0003	Mean: 0.0002 +/- 0.0009
Std Dev: 0.0202 +/- 0.0006	Std Dev: 0.0177 +/- 0.0002	Std Dev: 0.0209 +/- 0.0006



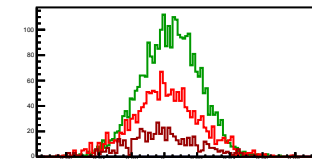
Cycle 11, Asyms

Entries: 559	Entries: 3739	Entries: 1588
Mean: 0.0000 +/- 0.0009	Mean: 0.0041 +/- 0.0003	Mean: -0.0002 +/- 0.0005
Std Dev: 0.0205 +/- 0.0006	Std Dev: 0.0176 +/- 0.0002	Std Dev: 0.0211 +/- 0.0004



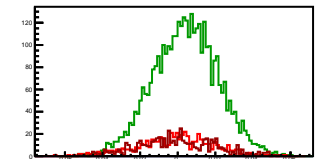
Cycle 12, Asyms

Entries: 1581	Entries: 2974	Entries: 556
Mean: 0.0009 +/- 0.0005	Mean: 0.0036 +/- 0.0003	Mean: -0.0008 +/- 0.0009
Std Dev: 0.0209 +/- 0.0004	Std Dev: 0.0178 +/- 0.0002	Std Dev: 0.0213 +/- 0.0006



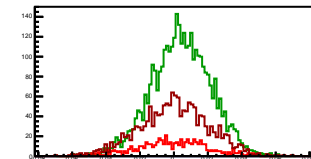
Cycle 13, Asyms

Entries: 560	Entries: 3799	Entries: 589
Mean: -0.0011 +/- 0.0009	Mean: 0.0040 +/- 0.0003	Mean: 0.0005 +/- 0.0008
Std Dev: 0.0204 +/- 0.0006	Std Dev: 0.0173 +/- 0.0002	Std Dev: 0.0204 +/- 0.0006



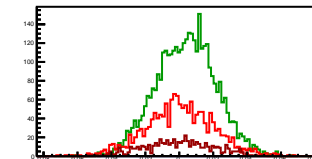
Cycle 14, Asyms

Entries: 582	Entries: 3674	Entries: 1596
Mean: -0.0007 +/- 0.0009	Mean: 0.0042 +/- 0.0003	Mean: 0.0002 +/- 0.0005
Std Dev: 0.0207 +/- 0.0006	Std Dev: 0.0174 +/- 0.0002	Std Dev: 0.0204 +/- 0.0004



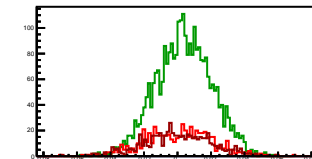
Cycle 15, Asyms

Entries: 1600	Entries: 3754	Entries: 580
Mean: 0.0003 +/- 0.0005	Mean: 0.0039 +/- 0.0003	Mean: -0.0005 +/- 0.0008
Std Dev: 0.0201 +/- 0.0004	Std Dev: 0.0176 +/- 0.0002	Std Dev: 0.0198 +/- 0.0006



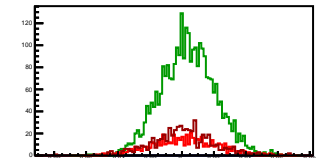
Cycle 16, Asyms

Entries: 580	Entries: 2915	Entries: 576
Mean: 0.0006 +/- 0.0008	Mean: 0.0037 +/- 0.0003	Mean: 0.0001 +/- 0.0008
Std Dev: 0.0202 +/- 0.0006	Std Dev: 0.0166 +/- 0.0002	Std Dev: 0.0200 +/- 0.0006



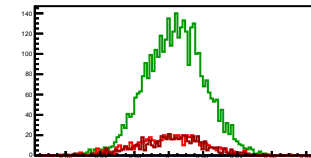
Cycle 17, Asyms

Entries: 577	Entries: 2984	Entries: 575
Mean: 0.0013 +/- 0.0009	Mean: 0.0036 +/- 0.0003	Mean: 0.0005 +/- 0.0008
Std Dev: 0.0205 +/- 0.0006	Std Dev: 0.0170 +/- 0.0002	Std Dev: 0.0193 +/- 0.0006



Cycle 18, Asyms

Entries: 574	Entries: 3706	Entries: 582
Mean: 0.0001 +/- 0.0009	Mean: 0.0039 +/- 0.0003	Mean: 0.0010 +/- 0.0008
Std Dev: 0.0207 +/- 0.0006	Std Dev: 0.0173 +/- 0.0002	Std Dev: 0.0197 +/- 0.0006



Cycle 19, Asyms

Entries: 582	Entries: 3753	Entries: 1524
Mean: -0.0010 +/- 0.0009	Mean: 0.0043 +/- 0.0003	Mean: -0.0005 +/- 0.0005
Std Dev: 0.0207 +/- 0.0006	Std Dev: 0.0175 +/- 0.0002	Std Dev: 0.0199 +/- 0.0004

