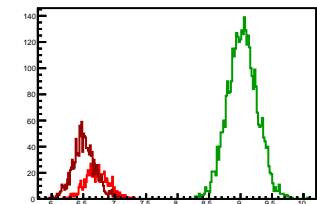


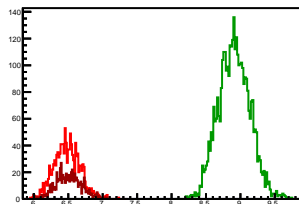
Cycle 1, PosHel

Entries: 702	Entries: 3668	Entries: 1313
Mean: 6.7157 +/- 0.0072	Mean: 9.0305 +/- 0.0039	Mean: 6.5151 +/- 0.0051
Std Dev: 0.1900 +/- 0.0051	Std Dev: 0.2346 +/- 0.0027	Std Dev: 0.1844 +/- 0.0036



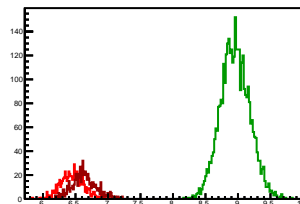
Cycle 2, PosHel

Entries: 1259	Entries: 3666	Entries: 672
Mean: 6.4818 +/- 0.0052	Mean: 8.9098 +/- 0.0038	Mean: 6.5067 +/- 0.0071
Std Dev: 0.1853 +/- 0.0037	Std Dev: 0.2289 +/- 0.0027	Std Dev: 0.1840 +/- 0.0050



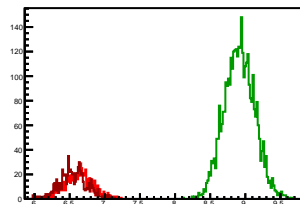
Cycle 3, PosHel

Entries: 667	Entries: 3671	Entries: 679
Mean: 6.4538 +/- 0.0070	Mean: 8.9543 +/- 0.0037	Mean: 6.6359 +/- 0.0073
Std Dev: 0.1808 +/- 0.0050	Std Dev: 0.2258 +/- 0.0028	Std Dev: 0.1915 +/- 0.0052



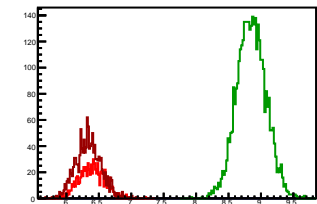
Cycle 4, PosHel

Entries: 676	Entries: 3673	Entries: 735
Mean: 6.6301 +/- 0.0073	Mean: 8.9156 +/- 0.0036	Mean: 6.5509 +/- 0.0071
Std Dev: 0.1895 +/- 0.0052	Std Dev: 0.2168 +/- 0.0025	Std Dev: 0.1919 +/- 0.0050



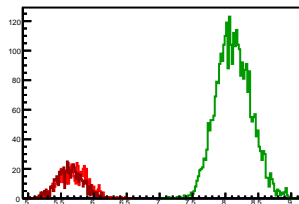
Cycle 5, PosHel

Entries: 727	Entries: 3720	Entries: 1317
Mean: 6.3908 +/- 0.0072	Mean: 8.8521 +/- 0.0037	Mean: 6.3420 +/- 0.0055
Std Dev: 0.1940 +/- 0.0051	Std Dev: 0.2252 +/- 0.0028	Std Dev: 0.1981 +/- 0.0039



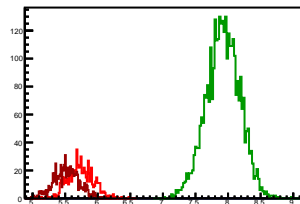
Cycle 6, PosHel

Entries: 653	Entries: 3415	Entries: 715
Mean: 5.6984 +/- 0.0084	Mean: 8.1256 +/- 0.0045	Mean: 5.6323 +/- 0.0072
Std Dev: 0.2142 +/- 0.0059	Std Dev: 0.2641 +/- 0.0032	Std Dev: 0.1936 +/- 0.0051



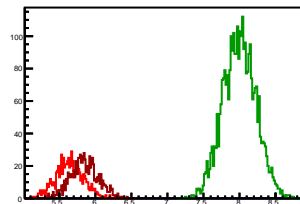
Cycle 7, PosHel

Entries: 701	Entries: 3443	Entries: 756
Mean: 5.7312 +/- 0.0074	Mean: 7.9232 +/- 0.0044	Mean: 5.5200 +/- 0.0072
Std Dev: 0.1949 +/- 0.0052	Std Dev: 0.2592 +/- 0.0031	Std Dev: 0.1966 +/- 0.0051



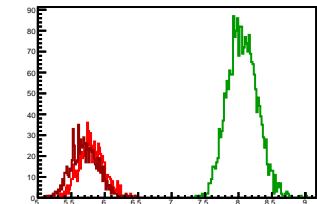
Cycle 8, PosHel

Entries: 745	Entries: 3272	Entries: 846
Mean: 5.6400 +/- 0.0071	Mean: 7.9979 +/- 0.0040	Mean: 5.8478 +/- 0.0066
Std Dev: 0.1937 +/- 0.0050	Std Dev: 0.2288 +/- 0.0028	Std Dev: 0.1922 +/- 0.0047



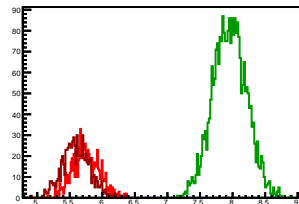
Cycle 9, PosHel

Entries: 815	Entries: 2347	Entries: 832
Mean: 5.8014 +/- 0.0066	Mean: 8.0580 +/- 0.0046	Mean: 5.7028 +/- 0.0070
Std Dev: 0.1876 +/- 0.0046	Std Dev: 0.2224 +/- 0.0032	Std Dev: 0.2015 +/- 0.0049



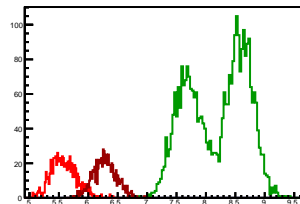
Cycle 10, PosHel

Entries: 805	Entries: 2689	Entries: 770
Mean: 5.7484 +/- 0.0073	Mean: 7.9555 +/- 0.0050	Mean: 5.5965 +/- 0.0076
Std Dev: 0.2069 +/- 0.0052	Std Dev: 0.2594 +/- 0.0035	Std Dev: 0.2120 +/- 0.0054



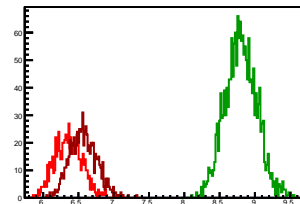
Cycle 11, PosHel

Entries: 756	Entries: 3202	Entries: 742
Mean: 5.5863 +/- 0.0080	Mean: 8.1882 +/- 0.0089	Mean: 6.2840 +/- 0.0072
Std Dev: 0.2194 +/- 0.0056	Std Dev: 0.5055 +/- 0.0063	Std Dev: 0.1955 +/- 0.0051



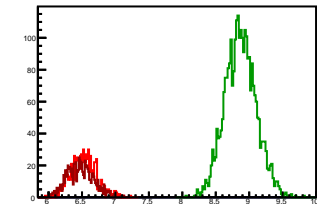
Cycle 12, PosHel

Entries: 741	Entries: 1882	Entries: 763
Mean: 6.3624 +/- 0.0071	Mean: 8.8018 +/- 0.0052	Mean: 6.5720 +/- 0.0069
Std Dev: 0.1943 +/- 0.0050	Std Dev: 0.2255 +/- 0.0037	Std Dev: 0.1904 +/- 0.0049



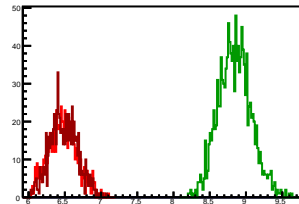
Cycle 13, PosHel

Entries: 809	Entries: 2854	Entries: 758
Mean: 6.5290 +/- 0.0069	Mean: 8.8704 +/- 0.0044	Mean: 6.4767 +/- 0.0070
Std Dev: 0.1969 +/- 0.0049	Std Dev: 0.2340 +/- 0.0031	Std Dev: 0.1940 +/- 0.0050



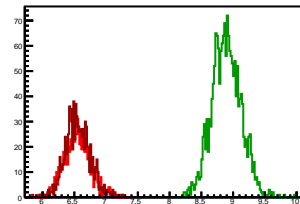
Cycle 14, PosHel

Entries: 755	Entries: 1343	Entries: 814
Mean: 6.4706 +/- 0.0072	Mean: 8.8462 +/- 0.0061	Mean: 6.4872 +/- 0.0066
Std Dev: 0.1988 +/- 0.0051	Std Dev: 0.2246 +/- 0.0043	Std Dev: 0.1892 +/- 0.0047



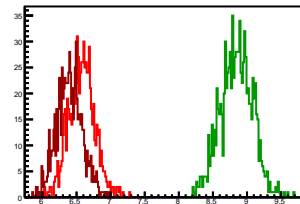
Cycle 15, PosHel

Entries: 797	Entries: 1805	Entries: 876
Mean: 6.5429 +/- 0.0071	Mean: 8.8941 +/- 0.0054	Mean: 6.5603 +/- 0.0066
Std Dev: 0.1991 +/- 0.0050	Std Dev: 0.2304 +/- 0.0038	Std Dev: 0.1965 +/- 0.0047



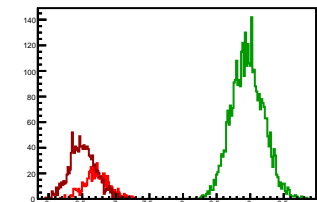
Cycle 16, PosHel

Entries: 760	Entries: 959	Entries: 795
Mean: 6.5766 +/- 0.0070	Mean: 8.8440 +/- 0.0076	Mean: 6.3931 +/- 0.0067
Std Dev: 0.1921 +/- 0.0049	Std Dev: 0.2348 +/- 0.0054	Std Dev: 0.1876 +/- 0.0047



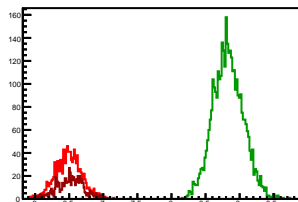
Cycle 1, NegHel

Entries: 702	Entries: 3668	Entries: 1313
Mean: 6.7202 +/- 0.0072	Mean: 8.9611 +/- 0.0039	Mean: 6.5111 +/- 0.0054
Std Dev: 0.1904 +/- 0.0051	Std Dev: 0.2386 +/- 0.0028	Std Dev: 0.1966 +/- 0.0038



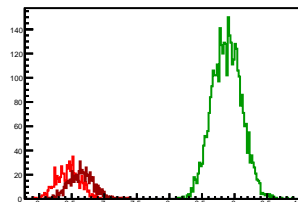
Cycle 2, NegHel

Entries: 1259	Entries: 3666	Entries: 672
Mean: 6.4879 +/- 0.0053	Mean: 8.8306 +/- 0.0037	Mean: 6.5184 +/- 0.0074
Std Dev: 0.1884 +/- 0.0038	Std Dev: 0.2218 +/- 0.0026	Std Dev: 0.1927 +/- 0.0053



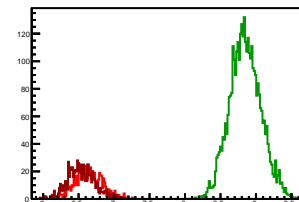
Cycle 3, NegHel

Entries: 667	Entries: 3671	Entries: 679
Mean: 6.4509 +/- 0.0073	Mean: 8.8819 +/- 0.0037	Mean: 6.6484 +/- 0.0074
Std Dev: 0.1890 +/- 0.0052	Std Dev: 0.2267 +/- 0.0026	Std Dev: 0.1936 +/- 0.0053



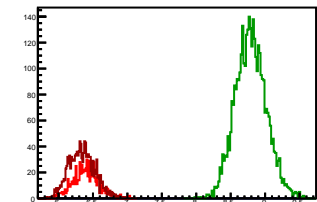
Cycle 4, NegHel

Entries: 676	Entries: 3673	Entries: 735
Mean: 6.6384 +/- 0.0074	Mean: 8.8499 +/- 0.0036	Mean: 6.5382 +/- 0.0069
Std Dev: 0.1925 +/- 0.0052	Std Dev: 0.2207 +/- 0.0026	Std Dev: 0.1882 +/- 0.0049



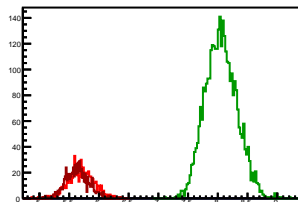
Cycle 5, NegHel

Entries: 727	Entries: 3720	Entries: 1317
Mean: 6.3996 +/- 0.0070	Mean: 8.7931 +/- 0.0037	Mean: 6.3406 +/- 0.0052
Std Dev: 0.1889 +/- 0.0050	Std Dev: 0.2268 +/- 0.0026	Std Dev: 0.1896 +/- 0.0037



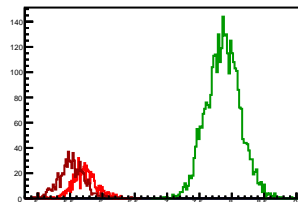
Cycle 6, NegHel

Entries: 653	Entries: 3415	Entries: 715
Mean: 5.6992 +/- 0.0087	Mean: 8.0558 +/- 0.0046	Mean: 5.6360 +/- 0.0072
Std Dev: 0.2211 +/- 0.0061	Std Dev: 0.2664 +/- 0.0032	Std Dev: 0.1931 +/- 0.0051



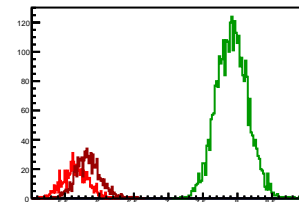
Cycle 7, NegHel

Entries: 701	Entries: 3443	Entries: 756
Mean: 5.7293 +/- 0.0069	Mean: 7.8663 +/- 0.0044	Mean: 5.5256 +/- 0.0074
Std Dev: 0.1815 +/- 0.0048	Std Dev: 0.2592 +/- 0.0031	Std Dev: 0.2045 +/- 0.0053



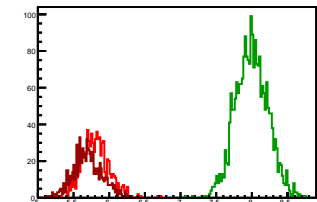
Cycle 8, NegHel

Entries: 745	Entries: 3272	Entries: 846
Mean: 5.6522 +/- 0.0068	Mean: 7.9235 +/- 0.0040	Mean: 5.8397 +/- 0.0064
Std Dev: 0.1856 +/- 0.0048	Std Dev: 0.2281 +/- 0.0028	Std Dev: 0.1866 +/- 0.0045



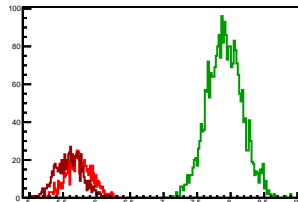
Cycle 9, NegHel

Entries: 815	Entries: 2347	Entries: 832
Mean: 5.8001 +/- 0.0069	Mean: 7.9963 +/- 0.0047	Mean: 5.6960 +/- 0.0070
Std Dev: 0.1975 +/- 0.0049	Std Dev: 0.2264 +/- 0.0033	Std Dev: 0.2033 +/- 0.0050



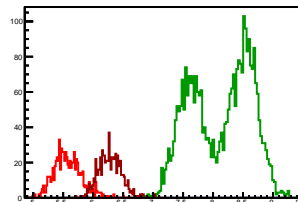
Cycle 10, NegHel

Entries: 805	Entries: 2689	Entries: 770
Mean: 5.7435 +/- 0.0069	Mean: 7.9117 +/- 0.0050	Mean: 5.5937 +/- 0.0072
Std Dev: 0.1958 +/- 0.0049	Std Dev: 0.2571 +/- 0.0035	Std Dev: 0.1989 +/- 0.0051



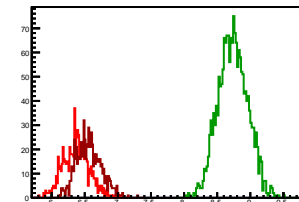
Cycle 11, NegHel

Entries: 756	Entries: 3202	Entries: 742
Mean: 5.5799 +/- 0.0083	Mean: 8.1295 +/- 0.0089	Mean: 6.2804 +/- 0.0069
Std Dev: 0.2273 +/- 0.0058	Std Dev: 0.5055 +/- 0.0063	Std Dev: 0.1872 +/- 0.0049



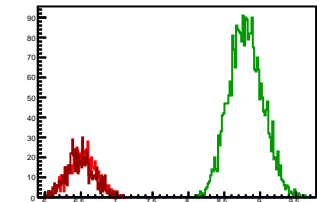
Cycle 12, NegHel

Entries: 741	Entries: 1882	Entries: 763
Mean: 6.3677 +/- 0.0072	Mean: 8.7377 +/- 0.0051	Mean: 6.5618 +/- 0.0068
Std Dev: 0.1971 +/- 0.0051	Std Dev: 0.2232 +/- 0.0036	Std Dev: 0.1884 +/- 0.0048



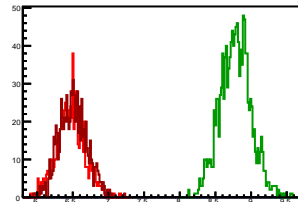
Cycle 13, NegHel

Entries: 809	Entries: 2854	Entries: 758
Mean: 6.5128 +/- 0.0066	Mean: 8.8027 +/- 0.0044	Mean: 6.4887 +/- 0.0070
Std Dev: 0.1889 +/- 0.0047	Std Dev: 0.2359 +/- 0.0031	Std Dev: 0.1927 +/- 0.0049



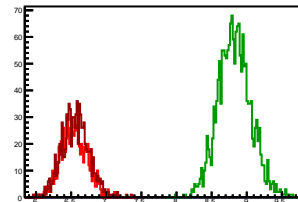
Cycle 14, NegHel

Entries: 755	Entries: 1343	Entries: 814
Mean: 6.4759 +/- 0.0072	Mean: 8.7811 +/- 0.0059	Mean: 6.5049 +/- 0.0068
Std Dev: 0.1983 +/- 0.0051	Std Dev: 0.2163 +/- 0.0042	Std Dev: 0.1952 +/- 0.0048



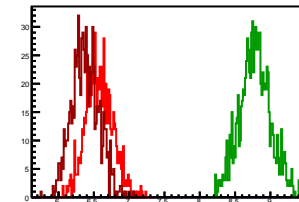
Cycle 15, NegHel

Entries: 797	Entries: 1805	Entries: 876
Mean: 6.5422 +/- 0.0067	Mean: 8.8258 +/- 0.0056	Mean: 6.5623 +/- 0.0065
Std Dev: 0.1886 +/- 0.0047	Std Dev: 0.2360 +/- 0.0039	Std Dev: 0.1913 +/- 0.0046



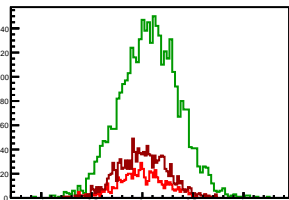
Cycle 16, NegHel

Entries: 760	Entries: 959	Entries: 795
Mean: 6.5770 +/- 0.0069	Mean: 8.7832 +/- 0.0071	Mean: 6.3807 +/- 0.0068
Std Dev: 0.1914 +/- 0.0049	Std Dev: 0.2202 +/- 0.0050	Std Dev: 0.1928 +/- 0.0048



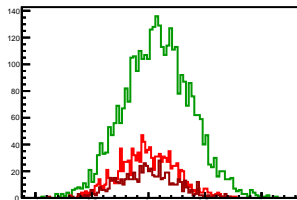
Cycle 1, Diffs

Entries: 702	Entries: 3668	Entries: 1313
Mean: -0.0045 +/- 0.0093	Mean: 0.0694 +/- 0.0048	Mean: 0.0040 +/- 0.0068
Std Dev: 0.2477 +/- 0.0066	Std Dev: 0.2889 +/- 0.0034	Std Dev: 0.2453 +/- 0.0048



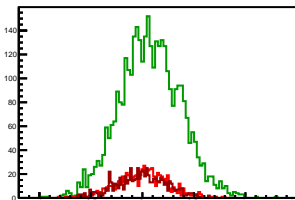
Cycle 2, Diffs

Entries: 1259	Entries: 3666	Entries: 672
Mean: -0.0061 +/- 0.0069	Mean: 0.0792 +/- 0.0049	Mean: -0.0117 +/- 0.0097
Std Dev: 0.2455 +/- 0.0049	Std Dev: 0.2942 +/- 0.0034	Std Dev: 0.2515 +/- 0.0069



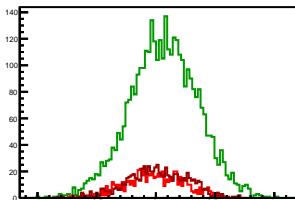
Cycle 3, Diffs

Entries: 667	Entries: 3671	Entries: 679
Mean: 0.0030 +/- 0.0095	Mean: 0.0725 +/- 0.0049	Mean: -0.0125 +/- 0.0094
Std Dev: 0.2449 +/- 0.0067	Std Dev: 0.2942 +/- 0.0034	Std Dev: 0.2459 +/- 0.0067



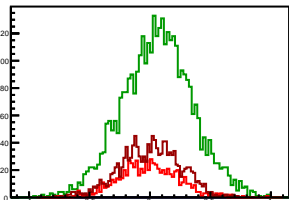
Cycle 4, Diffs

Entries: 676	Entries: 3673	Entries: 735
Mean: -0.0062 +/- 0.0097	Mean: 0.0657 +/- 0.0047	Mean: 0.0127 +/- 0.0093
Std Dev: 0.2527 +/- 0.0069	Std Dev: 0.2854 +/- 0.0033	Std Dev: 0.2517 +/- 0.0066



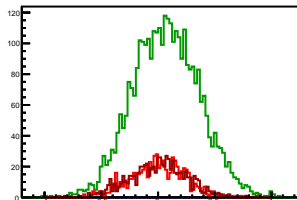
Cycle 5, Diffs

Entries: 727	Entries: 3720	Entries: 1317
Mean: -0.0068 +/- 0.0092	Mean: 0.0590 +/- 0.0047	Mean: 0.0014 +/- 0.0068
Std Dev: 0.2472 +/- 0.0065	Std Dev: 0.2893 +/- 0.0034	Std Dev: 0.2465 +/- 0.0048



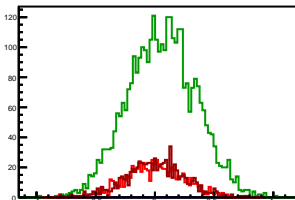
Cycle 6, Diffs

Entries: 653	Entries: 3415	Entries: 715
Mean: -0.0008 +/- 0.0096	Mean: 0.0698 +/- 0.0050	Mean: -0.0036 +/- 0.0091
Std Dev: 0.2448 +/- 0.0068	Std Dev: 0.2923 +/- 0.0035	Std Dev: 0.2446 +/- 0.0065



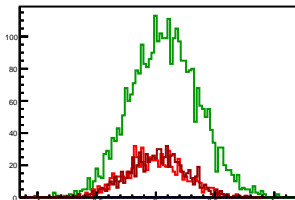
Cycle 7, Diffs

Entries: 701	Entries: 3443	Entries: 756
Mean: 0.0019 +/- 0.0094	Mean: 0.0569 +/- 0.0049	Mean: -0.0055 +/- 0.0091
Std Dev: 0.2487 +/- 0.0066	Std Dev: 0.2858 +/- 0.0034	Std Dev: 0.2489 +/- 0.0064



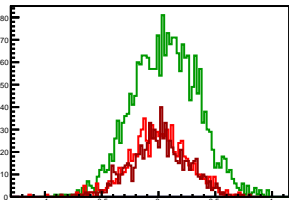
Cycle 8, Diffs

Entries: 745	Entries: 3272	Entries: 846
Mean: -0.0122 +/- 0.0092	Mean: 0.0744 +/- 0.0050	Mean: 0.0081 +/- 0.0084
Std Dev: 0.2505 +/- 0.0065	Std Dev: 0.2851 +/- 0.0035	Std Dev: 0.2448 +/- 0.0060



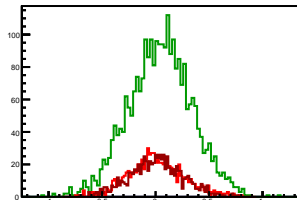
Cycle 9, Diffs

Entries: 815	Entries: 2347	Entries: 832
Mean: 0.0013 +/- 0.0089	Mean: 0.0618 +/- 0.0059	Mean: 0.0068 +/- 0.0087
Std Dev: 0.2540 +/- 0.0063	Std Dev: 0.2867 +/- 0.0042	Std Dev: 0.2513 +/- 0.0062



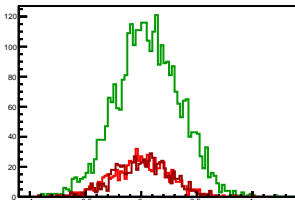
Cycle 10, Diffs

Entries: 805	Entries: 2689	Entries: 770
Mean: 0.0049 +/- 0.0092	Mean: 0.0437 +/- 0.0057	Mean: 0.0028 +/- 0.0090
Std Dev: 0.2615 +/- 0.0065	Std Dev: 0.2952 +/- 0.0040	Std Dev: 0.2484 +/- 0.0063



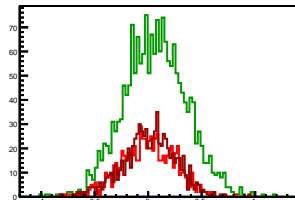
Cycle 11, Diffs

Entries: 756	Entries: 3202	Entries: 742
Mean: 0.0064 +/- 0.0091	Mean: 0.0587 +/- 0.0051	Mean: 0.0036 +/- 0.0093
Std Dev: 0.2501 +/- 0.0064	Std Dev: 0.2886 +/- 0.0036	Std Dev: 0.2525 +/- 0.0066



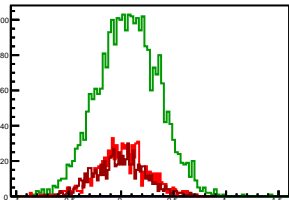
Cycle 12, Diffs

Entries: 741	Entries: 1882	Entries: 763
Mean: -0.0053 +/- 0.0093	Mean: 0.0641 +/- 0.0067	Mean: 0.0102 +/- 0.0089
Std Dev: 0.2533 +/- 0.0066	Std Dev: 0.2928 +/- 0.0048	Std Dev: 0.2451 +/- 0.0063



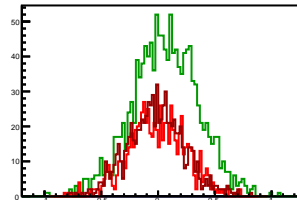
Cycle 13, Diffs

Entries: 809	Entries: 2854	Entries: 758
Mean: 0.0162 +/- 0.0085	Mean: 0.0677 +/- 0.0054	Mean: -0.0120 +/- 0.0087
Std Dev: 0.2423 +/- 0.0060	Std Dev: 0.2905 +/- 0.0038	Std Dev: 0.2406 +/- 0.0062



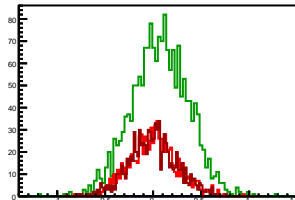
Cycle 14, Diffs

Entries: 755	Entries: 1343	Entries: 814
Mean: -0.0053 +/- 0.0092	Mean: 0.0651 +/- 0.0079	Mean: -0.0178 +/- 0.0087
Std Dev: 0.2529 +/- 0.0065	Std Dev: 0.2904 +/- 0.0056	Std Dev: 0.2484 +/- 0.0062



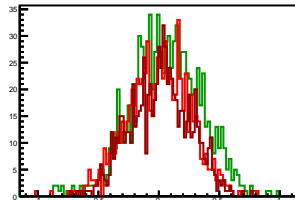
Cycle 15, Diffs

Entries: 797	Entries: 1805	Entries: 876
Mean: 0.0007 +/- 0.0090	Mean: 0.0682 +/- 0.0070	Mean: -0.0020 +/- 0.0085
Std Dev: 0.2552 +/- 0.0064	Std Dev: 0.2975 +/- 0.0050	Std Dev: 0.2502 +/- 0.0060



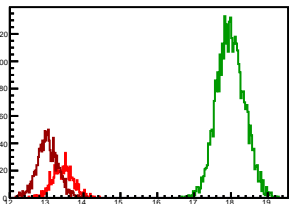
Cycle 16, Diffs

Entries: 760	Entries: 959	Entries: 795
Mean: -0.0004 +/- 0.0093	Mean: 0.0607 +/- 0.0093	Mean: 0.0124 +/- 0.0087
Std Dev: 0.2557 +/- 0.0066	Std Dev: 0.2888 +/- 0.0066	Std Dev: 0.2453 +/- 0.0062



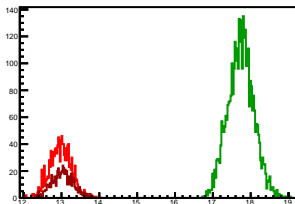
Cycle 1, Sums

Entries: 702	Entries: 3668	Entries: 1313
Mean: 13.4359 +/- 0.0109	Mean: 17.9917 +/- 0.0062	Mean: 13.0263 +/- 0.0081
Std Dev: 0.2888 +/- 0.0077	Std Dev: 0.3748 +/- 0.0044	Std Dev: 0.2918 +/- 0.0057



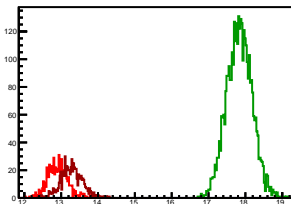
Cycle 2, Sums

Entries: 1259	Entries: 3666	Entries: 672
Mean: 12.9697 +/- 0.0079	Mean: 17.7404 +/- 0.0056	Mean: 13.0251 +/- 0.0108
Std Dev: 0.2818 +/- 0.0056	Std Dev: 0.3414 +/- 0.0040	Std Dev: 0.2895 +/- 0.0077



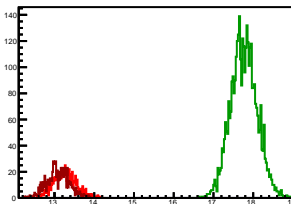
Cycle 3, Sums

Entries: 667	Entries: 3671	Entries: 679
Mean: 12.9047 +/- 0.0107	Mean: 17.8362 +/- 0.0057	Mean: 13.2843 +/- 0.0114
Std Dev: 0.2772 +/- 0.0076	Std Dev: 0.3438 +/- 0.0040	Std Dev: 0.2964 +/- 0.0080



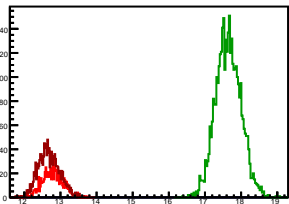
Cycle 4, Sums

Entries: 676	Entries: 3673	Entries: 735
Mean: 13.2685 +/- 0.0110	Mean: 17.7654 +/- 0.0055	Mean: 13.0891 +/- 0.0105
Std Dev: 0.2864 +/- 0.0078	Std Dev: 0.3317 +/- 0.0039	Std Dev: 0.2847 +/- 0.0074



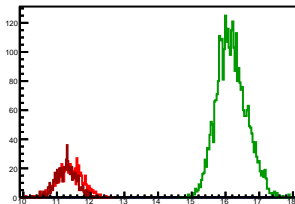
Cycle 5, Sums

Entries: 727	Entries: 3720	Entries: 1317
Mean: 12.7904 +/- 0.0108	Mean: 17.6452 +/- 0.0057	Mean: 12.6827 +/- 0.0082
Std Dev: 0.2925 +/- 0.0077	Std Dev: 0.3473 +/- 0.0040	Std Dev: 0.2981 +/- 0.0058



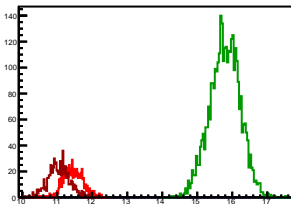
Cycle 6, Sums

Entries: 653	Entries: 3415	Entries: 715
Mean: 11.3976 +/- 0.0141	Mean: 16.1814 +/- 0.0076	Mean: 11.2683 +/- 0.0112
Std Dev: 0.3601 +/- 0.0100	Std Dev: 0.4427 +/- 0.0054	Std Dev: 0.2996 +/- 0.0079



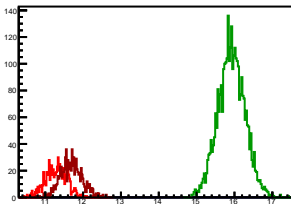
Cycle 7, Sums

Entries: 701	Entries: 3443	Entries: 756
Mean: 11.4604 +/- 0.0107	Mean: 15.7895 +/- 0.0074	Mean: 11.0456 +/- 0.0114
Std Dev: 0.2829 +/- 0.0076	Std Dev: 0.4324 +/- 0.0052	Std Dev: 0.3146 +/- 0.0081



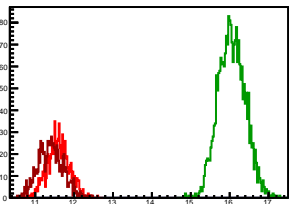
Cycle 8, Sums

Entries: 745	Entries: 3272	Entries: 846
Mean: 11.2923 +/- 0.0104	Mean: 15.9215 +/- 0.0062	Mean: 11.6875 +/- 0.0099
Std Dev: 0.2849 +/- 0.0074	Std Dev: 0.3570 +/- 0.0044	Std Dev: 0.2891 +/- 0.0070



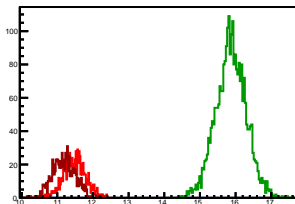
Cycle 9, Sums

Entries: 815	Entries: 2347	Entries: 832
Mean: 11.6014 +/- 0.0101	Mean: 16.0543 +/- 0.0071	Mean: 11.3987 +/- 0.0110
Std Dev: 0.2896 +/- 0.0072	Std Dev: 0.3453 +/- 0.0050	Std Dev: 0.3174 +/- 0.0078



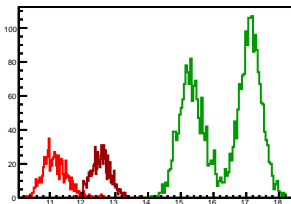
Cycle 10, Sums

Entries: 805	Entries: 2689	Entries: 770
Mean: 11.4919 +/- 0.0108	Mean: 15.8672 +/- 0.0082	Mean: 11.1903 +/- 0.0118
Std Dev: 0.3064 +/- 0.0076	Std Dev: 0.4238 +/- 0.0058	Std Dev: 0.3276 +/- 0.0083



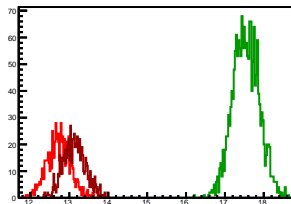
Cycle 11, Sums

Entries: 756	Entries: 3202	Entries: 742
Mean: 11.1662 +/- 0.0135	Mean: 16.3178 +/- 0.0171	Mean: 12.5644 +/- 0.0106
Std Dev: 0.3702 +/- 0.0095	Std Dev: 0.9689 +/- 0.0121	Std Dev: 0.2878 +/- 0.0075



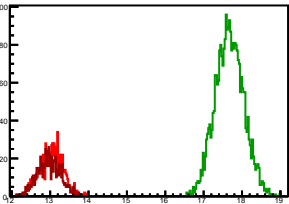
Cycle 12, Sums

Entries: 741	Entries: 1882	Entries: 763
Mean: 12.7302 +/- 0.0110	Mean: 17.5395 +/- 0.0078	Mean: 13.1338 +/- 0.0105
Std Dev: 0.2984 +/- 0.0078	Std Dev: 0.3400 +/- 0.0055	Std Dev: 0.2888 +/- 0.0074



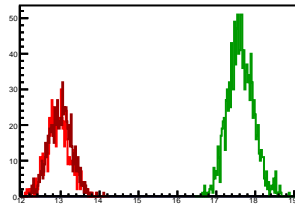
Cycle 13, Sums

Entries: 809	Entries: 2854	Entries: 758
Mean: 13.0418 +/- 0.0106	Mean: 17.6731 +/- 0.0069	Mean: 12.9654 +/- 0.0110
Std Dev: 0.3003 +/- 0.0075	Std Dev: 0.3695 +/- 0.0049	Std Dev: 0.3027 +/- 0.0078



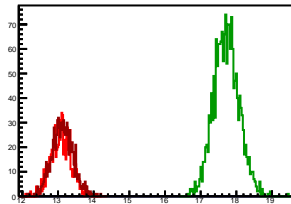
Cycle 14, Sums

Entries: 755	Entries: 1343	Entries: 814
Mean: 12.9465 +/- 0.0111	Mean: 17.6274 +/- 0.0091	Mean: 12.9921 +/- 0.0103
Std Dev: 0.3062 +/- 0.0079	Std Dev: 0.3319 +/- 0.0064	Std Dev: 0.2933 +/- 0.0073



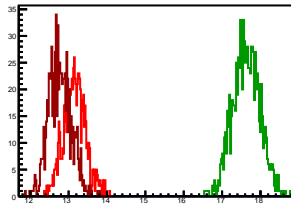
Cycle 15, Sums

Entries: 797	Entries: 1805	Entries: 876
Mean: 13.0851 +/- 0.0103	Mean: 17.7199 +/- 0.0085	Mean: 13.1226 +/- 0.0100
Std Dev: 0.2921 +/- 0.0073	Std Dev: 0.3592 +/- 0.0060	Std Dev: 0.2963 +/- 0.0071



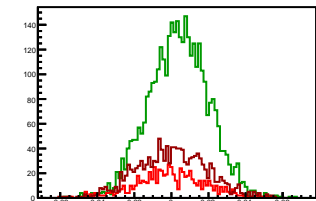
Cycle 16, Sums

Entries: 760	Entries: 959	Entries: 795
Mean: 13.1537 +/- 0.0104	Mean: 17.6272 +/- 0.0114	Mean: 12.7739 +/- 0.0103
Std Dev: 0.2859 +/- 0.0073	Std Dev: 0.3519 +/- 0.0080	Std Dev: 0.2907 +/- 0.0073



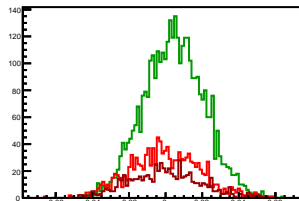
Cycle 1, Asyms

Entries: 702	Entries: 3668	Entries: 1313
Mean: -0.0003 +/- 0.0007	Mean: 0.0039 +/- 0.0003	Mean: 0.0003 +/- 0.0005
Std Dev: 0.0184 +/- 0.0005	Std Dev: 0.0160 +/- 0.0002	Std Dev: 0.0188 +/- 0.0004



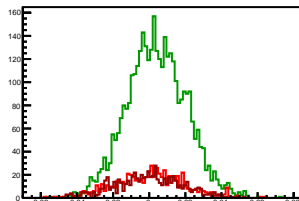
Cycle 2, Asyms

Entries: 1259	Entries: 3666	Entries: 672
Mean: -0.0005 +/- 0.0005	Mean: 0.0045 +/- 0.0003	Mean: -0.0009 +/- 0.0007
Std Dev: 0.0189 +/- 0.0004	Std Dev: 0.0166 +/- 0.0002	Std Dev: 0.0193 +/- 0.0005



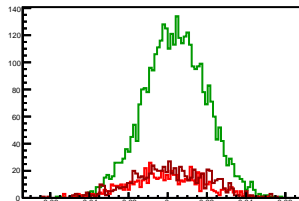
Cycle 3, Asyms

Entries: 667	Entries: 3671	Entries: 679
Mean: 0.0002 +/- 0.0007	Mean: 0.0041 +/- 0.0003	Mean: -0.0009 +/- 0.0007
Std Dev: 0.0190 +/- 0.0005	Std Dev: 0.0165 +/- 0.0002	Std Dev: 0.0184 +/- 0.0005



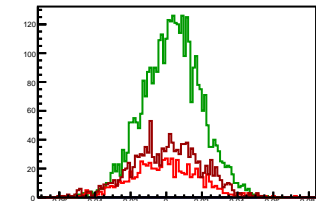
Cycle 4, Asyms

Entries: 676	Entries: 3673	Entries: 735
Mean: -0.0006 +/- 0.0007	Mean: 0.0037 +/- 0.0003	Mean: 0.0010 +/- 0.0007
Std Dev: 0.0190 +/- 0.0005	Std Dev: 0.0161 +/- 0.0002	Std Dev: 0.0192 +/- 0.0005



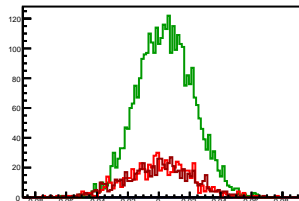
Cycle 5, Asyms

Entries: 727	Entries: 3720	Entries: 1317
Mean: -0.0007 +/- 0.0007	Mean: 0.0033 +/- 0.0003	Mean: 0.0001 +/- 0.0005
Std Dev: 0.0193 +/- 0.0005	Std Dev: 0.0164 +/- 0.0002	Std Dev: 0.0194 +/- 0.0004



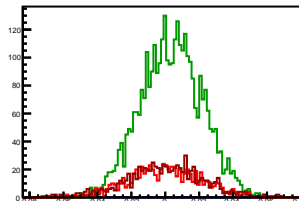
Cycle 6, Asyms

Entries: 653	Entries: 3415	Entries: 715
Mean: -0.0000 +/- 0.0008	Mean: 0.0043 +/- 0.0003	Mean: -0.0003 +/- 0.0008
Std Dev: 0.0214 +/- 0.0006	Std Dev: 0.0181 +/- 0.0002	Std Dev: 0.0216 +/- 0.0006



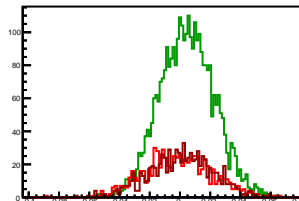
Cycle 7, Asyms

Entries: 701	Entries: 3443	Entries: 756
Mean: 0.0001 +/- 0.0008	Mean: 0.0036 +/- 0.0003	Mean: -0.0005 +/- 0.0008
Std Dev: 0.0216 +/- 0.0006	Std Dev: 0.0181 +/- 0.0002	Std Dev: 0.0225 +/- 0.0006



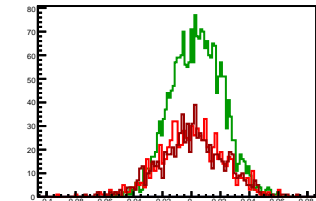
Cycle 8, Asyms

Entries: 745	Entries: 3272	Entries: 846
Mean: -0.0011 +/- 0.0008	Mean: 0.0047 +/- 0.0003	Mean: 0.0007 +/- 0.0007
Std Dev: 0.0221 +/- 0.0006	Std Dev: 0.0179 +/- 0.0002	Std Dev: 0.0209 +/- 0.0005



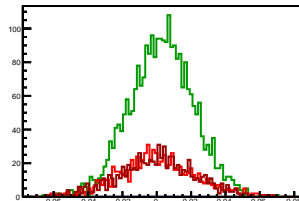
Cycle 9, Asyms

Entries: 815	Entries: 2347	Entries: 832
Mean: 0.0001 +/- 0.0008	Mean: 0.0039 +/- 0.0004	Mean: 0.0006 +/- 0.0008
Std Dev: 0.0218 +/- 0.0005	Std Dev: 0.0178 +/- 0.0003	Std Dev: 0.0220 +/- 0.0005



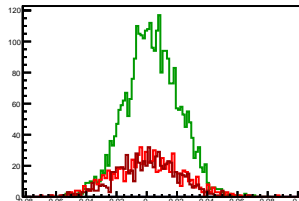
Cycle 10, Asyms

Entries: 805	Entries: 2689	Entries: 770
Mean: 0.0004 +/- 0.0008	Mean: 0.0028 +/- 0.0004	Mean: 0.0002 +/- 0.0008
Std Dev: 0.0227 +/- 0.0006	Std Dev: 0.0186 +/- 0.0003	Std Dev: 0.0222 +/- 0.0006



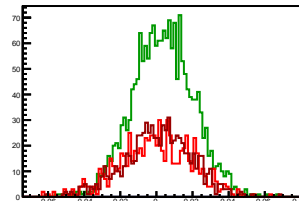
Cycle 11, Asyms

Entries: 756	Entries: 3202	Entries: 742
Mean: 0.0006 +/- 0.0008	Mean: 0.0036 +/- 0.0003	Mean: 0.0003 +/- 0.0007
Std Dev: 0.0223 +/- 0.0006	Std Dev: 0.0177 +/- 0.0002	Std Dev: 0.0201 +/- 0.0005



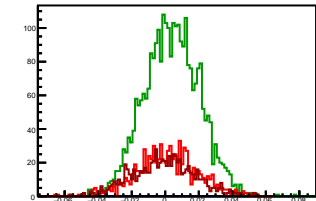
Cycle 12, Asyms

Entries: 741	Entries: 1882	Entries: 763
Mean: -0.0004 +/- 0.0007	Mean: 0.0037 +/- 0.0004	Mean: 0.0008 +/- 0.0007
Std Dev: 0.0198 +/- 0.0005	Std Dev: 0.0167 +/- 0.0003	Std Dev: 0.0186 +/- 0.0005



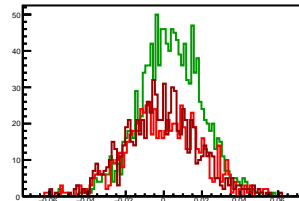
Cycle 13, Asyms

Entries: 809	Entries: 2854	Entries: 758
Mean: 0.0012 +/- 0.0007	Mean: 0.0038 +/- 0.0003	Mean: -0.0009 +/- 0.0007
Std Dev: 0.0185 +/- 0.0005	Std Dev: 0.0164 +/- 0.0002	Std Dev: 0.0185 +/- 0.0005



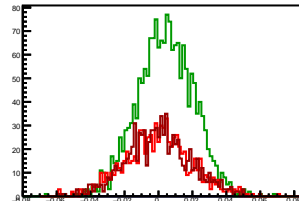
Cycle 14, Asyms

Entries: 755	Entries: 1343	Entries: 814
Mean: -0.0004 +/- 0.0007	Mean: 0.0037 +/- 0.0004	Mean: -0.0014 +/- 0.0007
Std Dev: 0.0195 +/- 0.0005	Std Dev: 0.0165 +/- 0.0003	Std Dev: 0.0191 +/- 0.0005



Cycle 15, Asyms

Entries: 797	Entries: 1805	Entries: 876
Mean: 0.0000 +/- 0.0007	Mean: 0.0039 +/- 0.0004	Mean: -0.0002 +/- 0.0006
Std Dev: 0.0194 +/- 0.0005	Std Dev: 0.0168 +/- 0.0003	Std Dev: 0.0190 +/- 0.0005



Cycle 16, Asyms

Entries: 760	Entries: 959	Entries: 795
Mean: -0.0000 +/- 0.0007	Mean: 0.0034 +/- 0.0005	Mean: 0.0010 +/- 0.0007
Std Dev: 0.0194 +/- 0.0005	Std Dev: 0.0164 +/- 0.0004	Std Dev: 0.0192 +/- 0.0005

