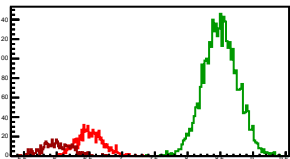
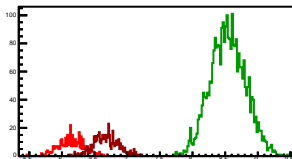


Cycle 1, PosHel

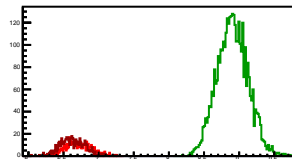
Entries: 827	Entries: 3743	Entries: 461
Mean: 6.5120 +/- 0.0072	Mean: 6.5008 +/- 0.0043	Mean: 6.0092 +/- 0.0107
Std Dev: 0.2064 +/- 0.0051	Std Dev: 0.2634 +/- 0.0030	Std Dev: 0.2305 +/- 0.0076

**Cycle 2, PosHel**

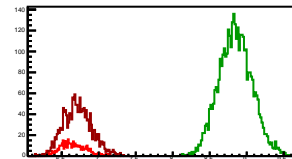
Entries: 379	Entries: 3028	Entries: 498
Mean: 6.1425 +/- 0.0099	Mean: 8.5421 +/- 0.0040	Mean: 6.6808 +/- 0.0085
Std Dev: 0.1931 +/- 0.0070	Std Dev: 0.2691 +/- 0.0035	Std Dev: 0.1896 +/- 0.0060

**Cycle 3, PosHel**

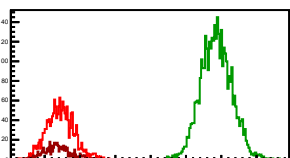
Entries: 478	Entries: 3692	Entries: 463
Mean: 6.7124 +/- 0.0062	Mean: 8.9059 +/- 0.0036	Mean: 6.6266 +/- 0.0082
Std Dev: 0.1792 +/- 0.0058	Std Dev: 0.2191 +/- 0.0025	Std Dev: 0.1774 +/- 0.0058

**Cycle 4, PosHel**

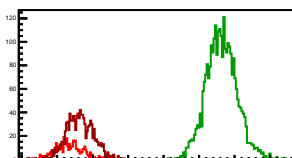
Entries: 462	Entries: 3752	Entries: 1683
Mean: 6.6488 +/- 0.0084	Mean: 8.8485 +/- 0.0037	Mean: 6.7139 +/- 0.0047
Std Dev: 0.1811 +/- 0.0060	Std Dev: 0.2260 +/- 0.0026	Std Dev: 0.1921 +/- 0.0033

**Cycle 5, PosHel**

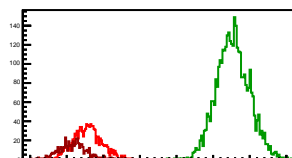
Entries: 1686	Entries: 3729	Entries: 460
Mean: 6.7197 +/- 0.0047	Mean: 8.9298 +/- 0.0036	Mean: 6.6771 +/- 0.0086
Std Dev: 0.1941 +/- 0.0033	Std Dev: 0.2176 +/- 0.0025	Std Dev: 0.1848 +/- 0.0061

**Cycle 6, PosHel**

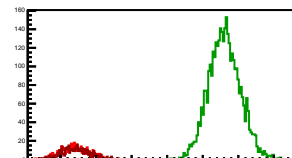
Entries: 459	Entries: 2901	Entries: 1078
Mean: 6.6665 +/- 0.0089	Mean: 8.8169 +/- 0.0040	Mean: 6.8223 +/- 0.0057
Std Dev: 0.1905 +/- 0.0063	Std Dev: 0.2158 +/- 0.0028	Std Dev: 0.1862 +/- 0.0040

**Cycle 7, PosHel**

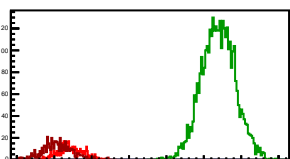
Entries: 1111	Entries: 3644	Entries: 513
Mean: 6.7826 +/- 0.0058	Mean: 8.7713 +/- 0.0037	Mean: 6.5897 +/- 0.0084
Std Dev: 0.1927 +/- 0.0041	Std Dev: 0.2237 +/- 0.0026	Std Dev: 0.1907 +/- 0.0060

**Cycle 8, PosHel**

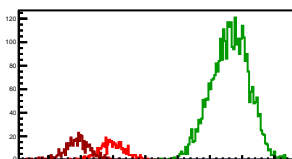
Entries: 489	Entries: 3650	Entries: 459
Mean: 6.6987 +/- 0.0092	Mean: 8.8060 +/- 0.0037	Mean: 6.7158 +/- 0.0088
Std Dev: 0.2024 +/- 0.0065	Std Dev: 0.2219 +/- 0.0026	Std Dev: 0.1892 +/- 0.0062

**Cycle 9, PosHel**

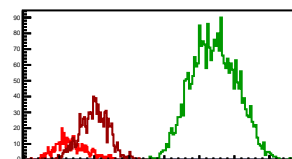
Entries: 459	Entries: 3752	Entries: 498
Mean: 6.7175 +/- 0.0079	Mean: 8.6943 +/- 0.0037	Mean: 6.5400 +/- 0.0087
Std Dev: 0.1886 +/- 0.0056	Std Dev: 0.2262 +/- 0.0026	Std Dev: 0.1930 +/- 0.0062

**Cycle 10, PosHel**

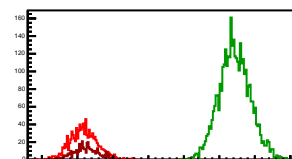
Entries: 491	Entries: 3605	Entries: 456
Mean: 6.4862 +/- 0.0089	Mean: 8.3103 +/- 0.0048	Mean: 5.9482 +/- 0.0094
Std Dev: 0.1953 +/- 0.0063	Std Dev: 0.2306 +/- 0.0034	Std Dev: 0.2012 +/- 0.0067

**Cycle 11, PosHel**

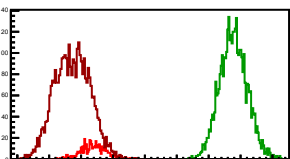
Entries: 452	Entries: 2800	Entries: 1004
Mean: 6.1726 +/- 0.0104	Mean: 8.2110 +/- 0.0061	Mean: 6.4997 +/- 0.0064
Std Dev: 0.2201 +/- 0.0073	Std Dev: 0.3241 +/- 0.0043	Std Dev: 0.2043 +/- 0.0046

**Cycle 12, PosHel**

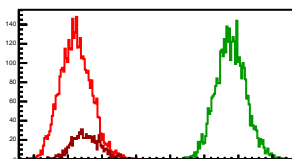
Entries: 1028	Entries: 3676	Entries: 463
Mean: 6.5911 +/- 0.0061	Mean: 8.7172 +/- 0.0037	Mean: 6.6242 +/- 0.0085
Std Dev: 0.1969 +/- 0.0043	Std Dev: 0.2221 +/- 0.0026	Std Dev: 0.1819 +/- 0.0060

**Cycle 13, PosHel**

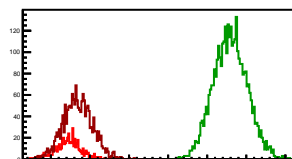
Entries: 452	Entries: 3789	Entries: 3404
Mean: 6.6907 +/- 0.0089	Mean: 8.8881 +/- 0.0037	Mean: 6.3653 +/- 0.0047
Std Dev: 0.1901 +/- 0.0063	Std Dev: 0.2171 +/- 0.0025	Std Dev: 0.2748 +/- 0.0033

**Cycle 14, PosHel**

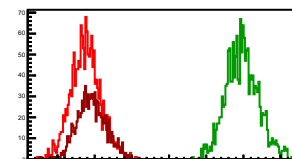
Entries: 3885	Entries: 3770	Entries: 919
Mean: 6.6150 +/- 0.0036	Mean: 8.8914 +/- 0.0036	Mean: 6.7684 +/- 0.0067
Std Dev: 0.2242 +/- 0.0025	Std Dev: 0.2186 +/- 0.0025	Std Dev: 0.2027 +/- 0.0047

**Cycle 15, PosHel**

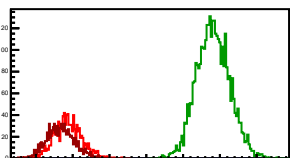
Entries: 521	Entries: 3666	Entries: 1717
Mean: 6.7151 +/- 0.0072	Mean: 8.7951 +/- 0.0036	Mean: 6.8445 +/- 0.0045
Std Dev: 0.1651 +/- 0.0051	Std Dev: 0.2168 +/- 0.0025	Std Dev: 0.1885 +/- 0.0032

**Cycle 16, PosHel**

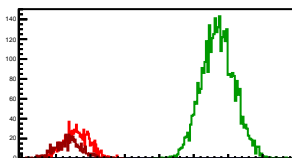
Entries: 1673	Entries: 1721	Entries: 980
Mean: 6.8789 +/- 0.0048	Mean: 8.9836 +/- 0.0053	Mean: 6.9568 +/- 0.0060
Std Dev: 0.1947 +/- 0.0034	Std Dev: 0.2181 +/- 0.0037	Std Dev: 0.1890 +/- 0.0043

**Cycle 17, PosHel**

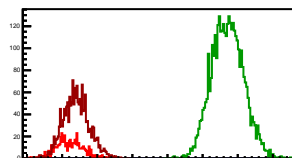
Entries: 1010	Entries: 3616	Entries: 993
Mean: 6.9332 +/- 0.0059	Mean: 8.9084 +/- 0.0037	Mean: 6.8351 +/- 0.0060
Std Dev: 0.1889 +/- 0.0042	Std Dev: 0.2242 +/- 0.0026	Std Dev: 0.1884 +/- 0.0042

**Cycle 18, PosHel**

Entries: 998	Entries: 3709	Entries: 565
Mean: 6.8010 +/- 0.0059	Mean: 8.8531 +/- 0.0039	Mean: 6.6814 +/- 0.0081
Std Dev: 0.1860 +/- 0.0042	Std Dev: 0.2383 +/- 0.0028	Std Dev: 0.1927 +/- 0.0057

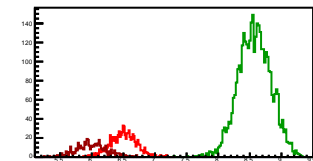
**Cycle 19, PosHel**

Entries: 564	Entries: 3757	Entries: 1768
Mean: 6.6074 +/- 0.0079	Mean: 8.8549 +/- 0.0037	Mean: 6.7005 +/- 0.0044
Std Dev: 0.1862 +/- 0.0056	Std Dev: 0.2274 +/- 0.0026	Std Dev: 0.1853 +/- 0.0031

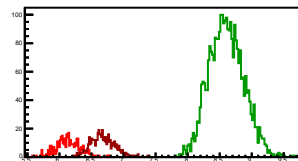


Cycle 1, NegHel

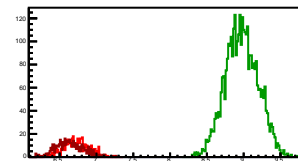
Entries: 827	Entries: 3743	Entries: 461
Mean: 6.5035 +/- 0.0072	Mean: 8.5753 +/- 0.0042	Mean: 5.9938 +/- 0.0114
Std Dev: 0.2080 +/- 0.0051	Std Dev: 0.2576 +/- 0.0030	Std Dev: 0.2439 +/- 0.0080

**Cycle 2, NegHel**

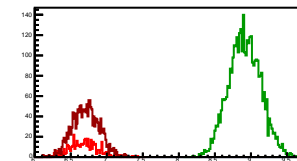
Entries: 379	Entries: 3028	Entries: 498
Mean: 6.1349 +/- 0.0095	Mean: 8.6039 +/- 0.0040	Mean: 6.6744 +/- 0.0082
Std Dev: 0.1849 +/- 0.0067	Std Dev: 0.2672 +/- 0.0034	Std Dev: 0.1819 +/- 0.0058

**Cycle 3, NegHel**

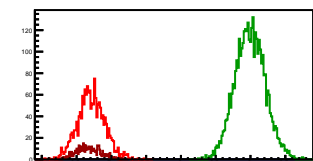
Entries: 478	Entries: 3692	Entries: 463
Mean: 6.7216 +/- 0.0079	Mean: 8.9736 +/- 0.0037	Mean: 6.6353 +/- 0.0087
Std Dev: 0.1734 +/- 0.0056	Std Dev: 0.2226 +/- 0.0026	Std Dev: 0.1876 +/- 0.0062

**Cycle 4, NegHel**

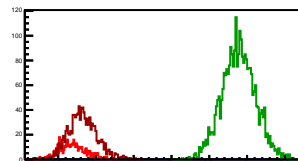
Entries: 462	Entries: 3752	Entries: 1683
Mean: 6.6756 +/- 0.0093	Mean: 8.9135 +/- 0.0036	Mean: 6.7088 +/- 0.0045
Std Dev: 0.1993 +/- 0.0066	Std Dev: 0.2227 +/- 0.0026	Std Dev: 0.1857 +/- 0.0032

**Cycle 5, NegHel**

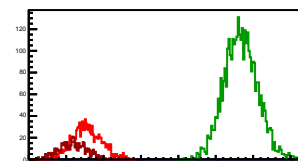
Entries: 1686	Entries: 3729	Entries: 460
Mean: 6.7113 +/- 0.0047	Mean: 8.9943 +/- 0.0035	Mean: 6.6772 +/- 0.0082
Std Dev: 0.1945 +/- 0.0033	Std Dev: 0.2160 +/- 0.0025	Std Dev: 0.1751 +/- 0.0058

**Cycle 6, NegHel**

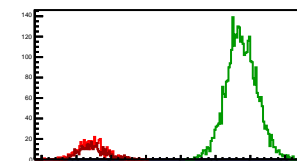
Entries: 459	Entries: 2901	Entries: 1078
Mean: 6.6870 +/- 0.0084	Mean: 8.8894 +/- 0.0041	Mean: 6.8240 +/- 0.0058
Std Dev: 0.1810 +/- 0.0060	Std Dev: 0.2213 +/- 0.0029	Std Dev: 0.1893 +/- 0.0041

**Cycle 7, NegHel**

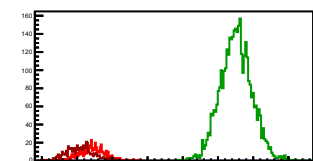
Entries: 1111	Entries: 3644	Entries: 513
Mean: 6.7790 +/- 0.0059	Mean: 8.8357 +/- 0.0037	Mean: 6.5873 +/- 0.0082
Std Dev: 0.1961 +/- 0.0042	Std Dev: 0.2227 +/- 0.0026	Std Dev: 0.1848 +/- 0.0058

**Cycle 8, NegHel**

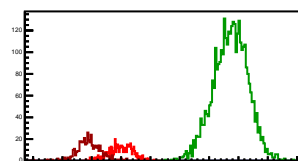
Entries: 489	Entries: 3650	Entries: 459
Mean: 6.7214 +/- 0.0087	Mean: 8.8733 +/- 0.0037	Mean: 6.7289 +/- 0.0068
Std Dev: 0.1927 +/- 0.0062	Std Dev: 0.2213 +/- 0.0026	Std Dev: 0.1895 +/- 0.0063

**Cycle 9, NegHel**

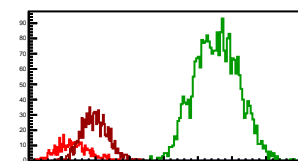
Entries: 459	Entries: 3752	Entries: 498
Mean: 6.7205 +/- 0.0087	Mean: 8.7571 +/- 0.0037	Mean: 6.5448 +/- 0.0084
Std Dev: 0.1866 +/- 0.0062	Std Dev: 0.2245 +/- 0.0026	Std Dev: 0.1865 +/- 0.0060

**Cycle 10, NegHel**

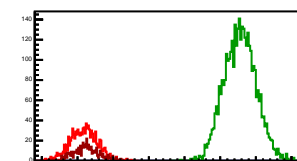
Entries: 491	Entries: 3605	Entries: 456
Mean: 6.4951 +/- 0.0092	Mean: 8.3657 +/- 0.0049	Mean: 5.9504 +/- 0.0096
Std Dev: 0.2013 +/- 0.0065	Std Dev: 0.2920 +/- 0.0034	Std Dev: 0.2055 +/- 0.0068

**Cycle 11, NegHel**

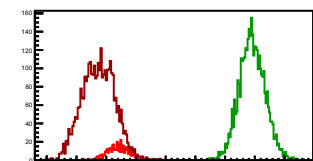
Entries: 452	Entries: 2800	Entries: 1004
Mean: 6.1714 +/- 0.0106	Mean: 8.2751 +/- 0.0061	Mean: 6.4929 +/- 0.0061
Std Dev: 0.2264 +/- 0.0075	Std Dev: 0.3236 +/- 0.0043	Std Dev: 0.1925 +/- 0.0043

**Cycle 12, NegHel**

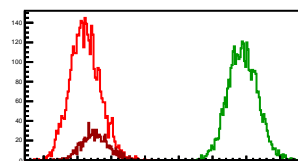
Entries: 1028	Entries: 3676	Entries: 463
Mean: 6.5862 +/- 0.0059	Mean: 8.7788 +/- 0.0037	Mean: 6.6229 +/- 0.0063
Std Dev: 0.1901 +/- 0.0042	Std Dev: 0.2233 +/- 0.0026	Std Dev: 0.1788 +/- 0.0059

**Cycle 13, NegHel**

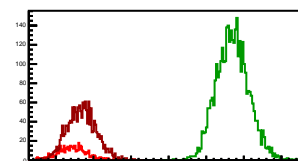
Entries: 452	Entries: 3789	Entries: 3404
Mean: 6.7118 +/- 0.0089	Mean: 8.9688 +/- 0.0037	Mean: 6.3690 +/- 0.0047
Std Dev: 0.1890 +/- 0.0063	Std Dev: 0.2177 +/- 0.0025	Std Dev: 0.2723 +/- 0.0033

**Cycle 14, NegHel**

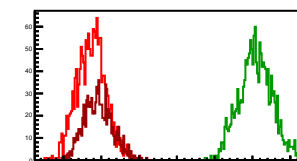
Entries: 3885	Entries: 3770	Entries: 919
Mean: 6.6132 +/- 0.0036	Mean: 8.9469 +/- 0.0035	Mean: 6.7627 +/- 0.0065
Std Dev: 0.2214 +/- 0.0025	Std Dev: 0.2179 +/- 0.0025	Std Dev: 0.1963 +/- 0.0046

**Cycle 15, NegHel**

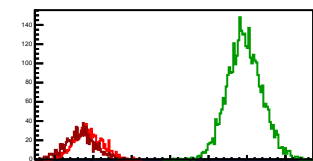
Entries: 521	Entries: 3666	Entries: 1717
Mean: 6.7105 +/- 0.0082	Mean: 8.8509 +/- 0.0035	Mean: 6.8449 +/- 0.0046
Std Dev: 0.1875 +/- 0.0058	Std Dev: 0.2136 +/- 0.0025	Std Dev: 0.1923 +/- 0.0033

**Cycle 16, NegHel**

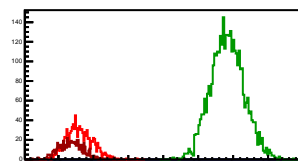
Entries: 1673	Entries: 1721	Entries: 980
Mean: 6.8739 +/- 0.0048	Mean: 9.0442 +/- 0.0053	Mean: 6.9598 +/- 0.0060
Std Dev: 0.1946 +/- 0.0034	Std Dev: 0.2202 +/- 0.0038	Std Dev: 0.1877 +/- 0.0042

**Cycle 17, NegHel**

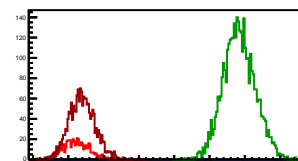
Entries: 1010	Entries: 3616	Entries: 993
Mean: 6.9333 +/- 0.0058	Mean: 8.9688 +/- 0.0037	Mean: 6.8314 +/- 0.0061
Std Dev: 0.1854 +/- 0.0041	Std Dev: 0.2252 +/- 0.0026	Std Dev: 0.1907 +/- 0.0043

**Cycle 18, NegHel**

Entries: 998	Entries: 3709	Entries: 565
Mean: 6.8000 +/- 0.0059	Mean: 8.9171 +/- 0.0039	Mean: 6.6808 +/- 0.0075
Std Dev: 0.1857 +/- 0.0042	Std Dev: 0.2389 +/- 0.0028	Std Dev: 0.1780 +/- 0.0053

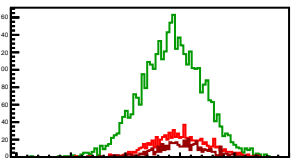
**Cycle 19, NegHel**

Entries: 564	Entries: 3757	Entries: 1768
Mean: 6.6072 +/- 0.0079	Mean: 8.9199 +/- 0.0037	Mean: 6.6947 +/- 0.0044
Std Dev: 0.1865 +/- 0.0056	Std Dev: 0.2266 +/- 0.0026	Std Dev: 0.1835 +/- 0.0031



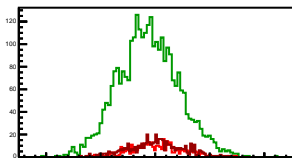
Cycle 1, Diffs

Entries: 827	Entries: 3743	Entries: 461
Mean: 0.0086 +/- 0.0069	Mean: -0.0745 +/- 0.0046	Mean: 0.0154 +/- 0.0112
Std Dev: 0.2553 +/- 0.0063	Std Dev: 0.2828 +/- 0.0033	Std Dev: 0.2397 +/- 0.0079



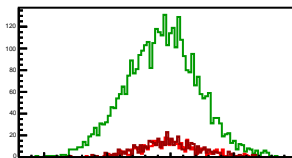
Cycle 2, Diffs

Entries: 379	Entries: 3028	Entries: 498
Mean: -0.0076 +/- 0.0121	Mean: -0.0617 +/- 0.0050	Mean: 0.0064 +/- 0.0111
Std Dev: 0.2349 +/- 0.0085	Std Dev: 0.2773 +/- 0.0036	Std Dev: 0.2486 +/- 0.0079



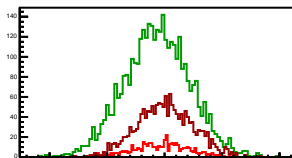
Cycle 3, Diffs

Entries: 478	Entries: 3692	Entries: 463
Mean: -0.0092 +/- 0.0107	Mean: -0.0677 +/- 0.0047	Mean: -0.0087 +/- 0.0110
Std Dev: 0.2331 +/- 0.0075	Std Dev: 0.2842 +/- 0.0033	Std Dev: 0.2363 +/- 0.0078



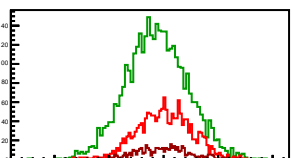
Cycle 4, Diffs

Entries: 462	Entries: 3752	Entries: 1683
Mean: -0.0268 +/- 0.0112	Mean: -0.0651 +/- 0.0047	Mean: 0.0051 +/- 0.0059
Std Dev: 0.2398 +/- 0.0079	Std Dev: 0.2858 +/- 0.0033	Std Dev: 0.2430 +/- 0.0042



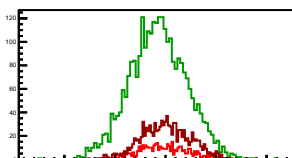
Cycle 5, Diffs

Entries: 1686	Entries: 3729	Entries: 460
Mean: 0.0084 +/- 0.0060	Mean: -0.0645 +/- 0.0046	Mean: -0.0001 +/- 0.0108
Std Dev: 0.2470 +/- 0.0043	Std Dev: 0.2803 +/- 0.0032	Std Dev: 0.2317 +/- 0.0076



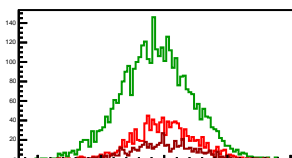
Cycle 6, Diffs

Entries: 459	Entries: 2901	Entries: 1078
Mean: -0.0205 +/- 0.0111	Mean: -0.0725 +/- 0.0052	Mean: -0.0018 +/- 0.0073
Std Dev: 0.2388 +/- 0.0079	Std Dev: 0.2814 +/- 0.0037	Std Dev: 0.2403 +/- 0.0052



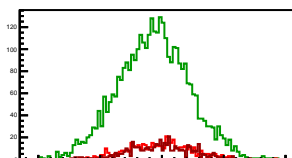
Cycle 7, Diffs

Entries: 1111	Entries: 3644	Entries: 513
Mean: 0.0036 +/- 0.0073	Mean: -0.0645 +/- 0.0046	Mean: 0.0024 +/- 0.0110
Std Dev: 0.2428 +/- 0.0052	Std Dev: 0.2793 +/- 0.0033	Std Dev: 0.2495 +/- 0.0078



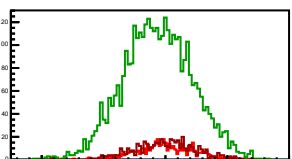
Cycle 8, Diffs

Entries: 489	Entries: 3650	Entries: 459
Mean: -0.0227 +/- 0.0114	Mean: -0.0673 +/- 0.0047	Mean: -0.0131 +/- 0.0117
Std Dev: 0.2529 +/- 0.0081	Std Dev: 0.2860 +/- 0.0033	Std Dev: 0.2514 +/- 0.0083



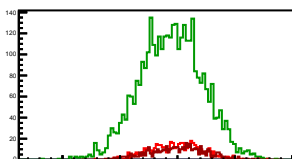
Cycle 9, Diffs

Entries: 459	Entries: 3752	Entries: 498
Mean: -0.0031 +/- 0.0108	Mean: -0.0628 +/- 0.0046	Mean: -0.0048 +/- 0.0113
Std Dev: 0.2304 +/- 0.0076	Std Dev: 0.2822 +/- 0.0032	Std Dev: 0.2492 +/- 0.0080



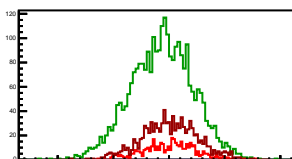
Cycle 10, Diffs

Entries: 491	Entries: 3605	Entries: 456
Mean: -0.0089 +/- 0.0104	Mean: -0.0553 +/- 0.0046	Mean: -0.0023 +/- 0.0114
Std Dev: 0.2286 +/- 0.0074	Std Dev: 0.2754 +/- 0.0032	Std Dev: 0.2428 +/- 0.0080



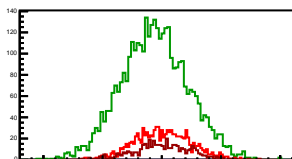
Cycle 11, Diffs

Entries: 452	Entries: 2800	Entries: 1004
Mean: 0.0011 +/- 0.0112	Mean: -0.0641 +/- 0.0053	Mean: 0.0067 +/- 0.0079
Std Dev: 0.2380 +/- 0.0079	Std Dev: 0.2804 +/- 0.0037	Std Dev: 0.2517 +/- 0.0056



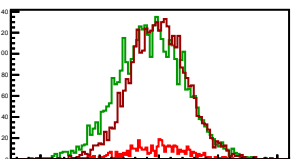
Cycle 12, Diffs

Entries: 1028	Entries: 3676	Entries: 463
Mean: 0.0049 +/- 0.0073	Mean: -0.0616 +/- 0.0047	Mean: 0.0013 +/- 0.0111
Std Dev: 0.2344 +/- 0.0052	Std Dev: 0.2825 +/- 0.0033	Std Dev: 0.2384 +/- 0.0078



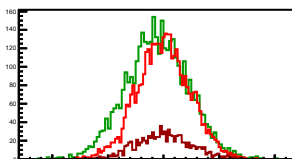
Cycle 13, Diffs

Entries: 452	Entries: 3789	Entries: 3404
Mean: -0.0211 +/- 0.0115	Mean: -0.0667 +/- 0.0046	Mean: -0.0037 +/- 0.0041
Std Dev: 0.2439 +/- 0.0081	Std Dev: 0.2821 +/- 0.0032	Std Dev: 0.2403 +/- 0.0029



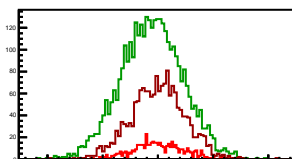
Cycle 14, Diffs

Entries: 3885	Entries: 3770	Entries: 919
Mean: 0.0018 +/- 0.0038	Mean: -0.0555 +/- 0.0046	Mean: 0.0057 +/- 0.0080
Std Dev: 0.2367 +/- 0.0027	Std Dev: 0.2797 +/- 0.0032	Std Dev: 0.2424 +/- 0.0057



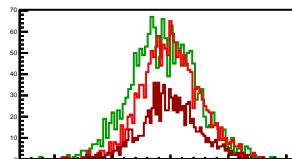
Cycle 15, Diffs

Entries: 521	Entries: 3666	Entries: 1717
Mean: 0.0046 +/- 0.0101	Mean: -0.0558 +/- 0.0046	Mean: -0.0058 +/- 0.0059
Std Dev: 0.2313 +/- 0.0072	Std Dev: 0.2809 +/- 0.0033	Std Dev: 0.2432 +/- 0.0041



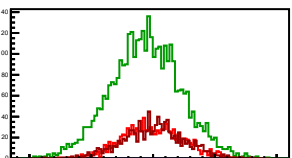
Cycle 16, Diffs

Entries: 1673	Entries: 1721	Entries: 980
Mean: 0.0050 +/- 0.0061	Mean: -0.0606 +/- 0.0059	Mean: -0.0030 +/- 0.0077
Std Dev: 0.2498 +/- 0.0043	Std Dev: 0.2845 +/- 0.0048	Std Dev: 0.2424 +/- 0.0055



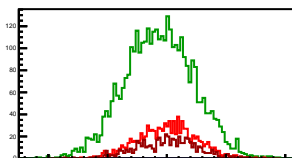
Cycle 17, Diffs

Entries: 1010	Entries: 3616	Entries: 993
Mean: -0.0000 +/- 0.0077	Mean: -0.0604 +/- 0.0047	Mean: 0.0037 +/- 0.0079
Std Dev: 0.2432 +/- 0.0054	Std Dev: 0.2840 +/- 0.0032	Std Dev: 0.2479 +/- 0.0056



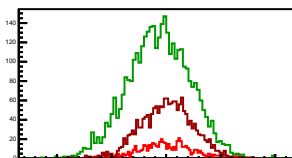
Cycle 18, Diffs

Entries: 998	Entries: 3709	Entries: 565
Mean: 0.0009 +/- 0.0077	Mean: -0.0640 +/- 0.0048	Mean: 0.0006 +/- 0.0107
Std Dev: 0.2429 +/- 0.0054	Std Dev: 0.2918 +/- 0.0034	Std Dev: 0.2536 +/- 0.0075



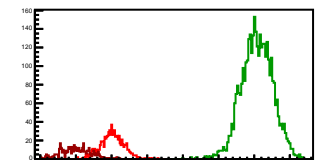
Cycle 19, Diffs

Entries: 564	Entries: 3757	Entries: 1768
Mean: 0.0003 +/- 0.0101	Mean: -0.0650 +/- 0.0046	Mean: -0.0058 +/- 0.0056
Std Dev: 0.2405 +/- 0.0072	Std Dev: 0.2850 +/- 0.0033	Std Dev: 0.2351 +/- 0.0040

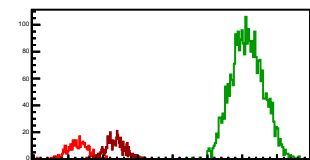


Cycle 1, Sums

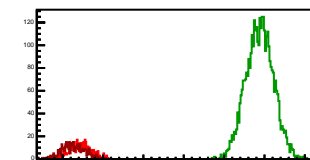
Entries: 827	Entries: 3743	Entries: 461
Mean: 13.0155 +/- 0.0113	Mean: 17.0761 +/- 0.0072	Mean: 12.0030 +/- 0.0191
Std Dev: 0.3264 +/- 0.0080	Std Dev: 0.4376 +/- 0.0051	Std Dev: 0.4096 +/- 0.0135

**Cycle 2, Sums**

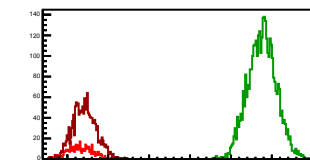
Entries: 379	Entries: 3028	Entries: 498
Mean: 12.2774 +/- 0.0152	Mean: 17.1460 +/- 0.0063	Mean: 13.3552 +/- 0.0124
Std Dev: 0.2963 +/- 0.0108	Std Dev: 0.4590 +/- 0.0059	Std Dev: 0.2762 +/- 0.0088

**Cycle 3, Sums**

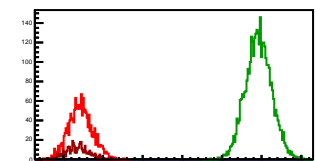
Entries: 478	Entries: 3692	Entries: 463
Mean: 13.4340 +/- 0.0121	Mean: 17.6796 +/- 0.0056	Mean: 13.2620 +/- 0.0129
Std Dev: 0.2646 +/- 0.0086	Std Dev: 0.3381 +/- 0.0039	Std Dev: 0.2784 +/- 0.0091

**Cycle 4, Sums**

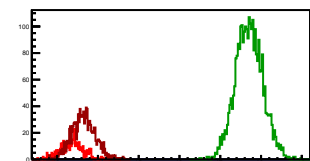
Entries: 462	Entries: 3752	Entries: 1683
Mean: 13.3243 +/- 0.0138	Mean: 17.7620 +/- 0.0056	Mean: 13.4227 +/- 0.0071
Std Dev: 0.2959 +/- 0.0097	Std Dev: 0.3460 +/- 0.0040	Std Dev: 0.2892 +/- 0.0050

**Cycle 5, Sums**

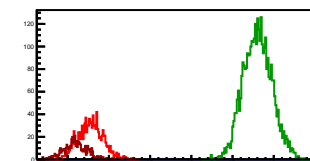
Entries: 1686	Entries: 3729	Entries: 460
Mean: 13.4310 +/- 0.0073	Mean: 17.9241 +/- 0.0054	Mean: 13.3544 +/- 0.0128
Std Dev: 0.3000 +/- 0.0052	Std Dev: 0.3308 +/- 0.0038	Std Dev: 0.2756 +/- 0.0091

**Cycle 6, Sums**

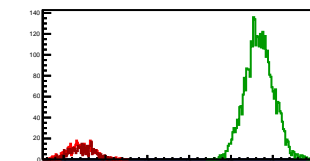
Entries: 459	Entries: 2901	Entries: 1078
Mean: 13.3535 +/- 0.0133	Mean: 17.7063 +/- 0.0062	Mean: 13.6463 +/- 0.0088
Std Dev: 0.2847 +/- 0.0094	Std Dev: 0.3344 +/- 0.0044	Std Dev: 0.2886 +/- 0.0092

**Cycle 7, Sums**

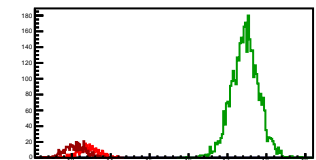
Entries: 1111	Entries: 3644	Entries: 513
Mean: 13.5617 +/- 0.0091	Mean: 17.6070 +/- 0.0058	Mean: 13.1770 +/- 0.0124
Std Dev: 0.3036 +/- 0.0064	Std Dev: 0.3482 +/- 0.0041	Std Dev: 0.2806 +/- 0.0088

**Cycle 8, Sums**

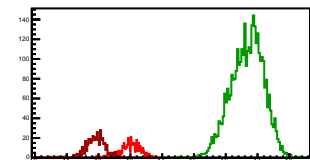
Entries: 489	Entries: 3650	Entries: 459
Mean: 13.4201 +/- 0.0137	Mean: 17.6792 +/- 0.0056	Mean: 13.4446 +/- 0.0132
Std Dev: 0.3037 +/- 0.0097	Std Dev: 0.3386 +/- 0.0040	Std Dev: 0.2832 +/- 0.0093

**Cycle 9, Sums**

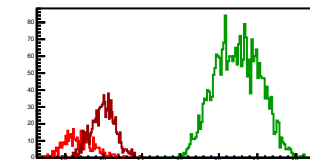
Entries: 458	Entries: 3752	Entries: 488
Mean: 13.4300 +/- 0.0127	Mean: 17.4514 +/- 0.0057	Mean: 13.0848 +/- 0.0130
Std Dev: 0.2709 +/- 0.0089	Std Dev: 0.3515 +/- 0.0041	Std Dev: 0.2863 +/- 0.0092

**Cycle 10, Sums**

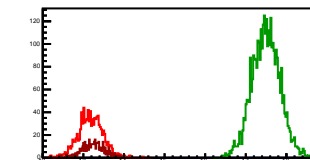
Entries: 481	Entries: 3605	Entries: 456
Mean: 12.9813 +/- 0.0148	Mean: 16.6760 +/- 0.0066	Mean: 11.8986 +/- 0.0153
Std Dev: 0.3241 +/- 0.0105	Std Dev: 0.5134 +/- 0.0060	Std Dev: 0.3263 +/- 0.0108

**Cycle 11, Sums**

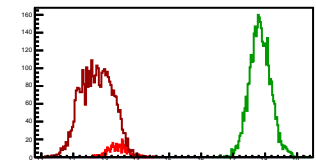
Entries: 452	Entries: 2800	Entries: 1004
Mean: 13.3440 +/- 0.0178	Mean: 16.4862 +/- 0.0110	Mean: 12.9926 +/- 0.0097
Std Dev: 0.3776 +/- 0.0126	Std Dev: 0.5839 +/- 0.0078	Std Dev: 0.3070 +/- 0.0069

**Cycle 12, Sums**

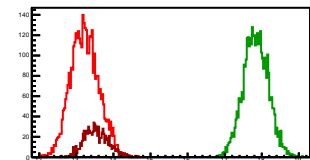
Entries: 1020	Entries: 3676	Entries: 463
Mean: 13.1773 +/- 0.0096	Mean: 17.4960 +/- 0.0057	Mean: 13.2471 +/- 0.0126
Std Dev: 0.3079 +/- 0.0068	Std Dev: 0.3344 +/- 0.0040	Std Dev: 0.2706 +/- 0.0089

**Cycle 13, Sums**

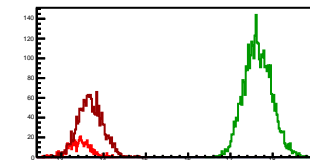
Entries: 452	Entries: 3789	Entries: 3404
Mean: 13.8655 +/- 0.0090	Mean: 17.8428 +/- 0.0054	Mean: 12.7343 +/- 0.0084
Std Dev: 0.2902 +/- 0.0097	Std Dev: 0.3308 +/- 0.0038	Std Dev: 0.4915 +/- 0.0060

**Cycle 14, Sums**

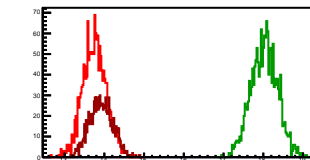
Entries: 3885	Entries: 3770	Entries: 919
Mean: 13.2282 +/- 0.0061	Mean: 17.6383 +/- 0.0055	Mean: 13.5311 +/- 0.0105
Std Dev: 0.3776 +/- 0.0043	Std Dev: 0.3351 +/- 0.0039	Std Dev: 0.3169 +/- 0.0074

**Cycle 15, Sums**

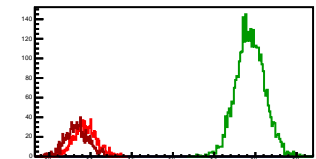
Entries: 521	Entries: 3666	Entries: 1717
Mean: 13.4256 +/- 0.0117	Mean: 17.6460 +/- 0.0054	Mean: 13.6894 +/- 0.0071
Std Dev: 0.2669 +/- 0.0083	Std Dev: 0.3262 +/- 0.0038	Std Dev: 0.2930 +/- 0.0050

**Cycle 16, Sums**

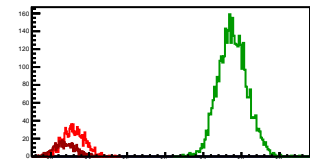
Entries: 1673	Entries: 1721	Entries: 980
Mean: 13.7528 +/- 0.0073	Mean: 18.0278 +/- 0.0080	Mean: 13.9165 +/- 0.0092
Std Dev: 0.2986 +/- 0.0052	Std Dev: 0.3334 +/- 0.0057	Std Dev: 0.2883 +/- 0.0065

**Cycle 17, Sums**

Entries: 1010	Entries: 3616	Entries: 993
Mean: 13.8665 +/- 0.0090	Mean: 17.8772 +/- 0.0058	Mean: 13.6666 +/- 0.0091
Std Dev: 0.2846 +/- 0.0063	Std Dev: 0.3482 +/- 0.0041	Std Dev: 0.2868 +/- 0.0064

**Cycle 18, Sums**

Entries: 998	Entries: 3709	Entries: 565
Mean: 13.6010 +/- 0.0089	Mean: 17.7702 +/- 0.0062	Mean: 13.3622 +/- 0.0114
Std Dev: 0.2813 +/- 0.0063	Std Dev: 0.3776 +/- 0.0044	Std Dev: 0.2709 +/- 0.0081

**Cycle 19, Sums**

Entries: 564	Entries: 3757	Entries: 1768
Mean: 13.2146 +/- 0.0121	Mean: 17.7747 +/- 0.0058	Mean: 13.3952 +/- 0.0068
Std Dev: 0.2873 +/- 0.0086	Std Dev: 0.3354 +/- 0.0041	Std Dev: 0.2843 +/- 0.0048

