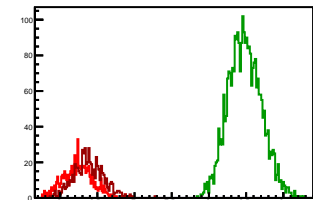


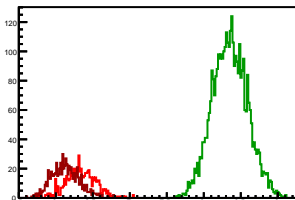
Cycle 1, PosHel

Entries: 665	Entries: 2999	Entries: 618
Mean: 6.2447 +/- 0.0076	Mean: 8.4829 +/- 0.0041	Mean: 6.3842 +/- 0.0081
Std Dev: 0.1957 +/- 0.0054	Std Dev: 0.2229 +/- 0.0029	Std Dev: 0.2002 +/- 0.0057



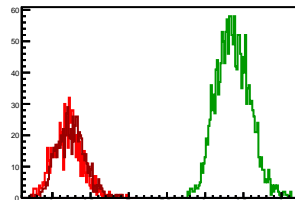
Cycle 2, PosHel

Entries: 616	Entries: 3678	Entries: 733
Mean: 6.3399 +/- 0.0080	Mean: 8.3522 +/- 0.0039	Mean: 6.1317 +/- 0.0069
Std Dev: 0.1982 +/- 0.0056	Std Dev: 0.2371 +/- 0.0028	Std Dev: 0.1862 +/- 0.0049



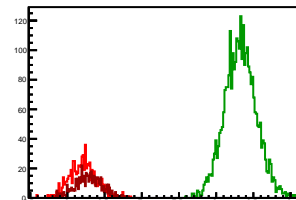
Cycle 3, PosHel

Entries: 705	Entries: 1860	Entries: 761
Mean: 6.2005 +/- 0.0071	Mean: 8.3634 +/- 0.0051	Mean: 6.2439 +/- 0.0066
Std Dev: 0.1883 +/- 0.0050	Std Dev: 0.2187 +/- 0.0036	Std Dev: 0.1813 +/- 0.0046



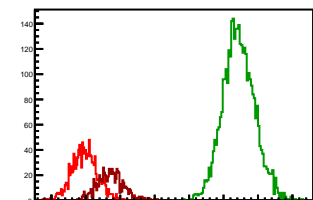
Cycle 4, PosHel

Entries: 723	Entries: 3152	Entries: 560
Mean: 6.2114 +/- 0.0070	Mean: 8.3273 +/- 0.0038	Mean: 6.2882 +/- 0.0077
Std Dev: 0.1883 +/- 0.0050	Std Dev: 0.2142 +/- 0.0027	Std Dev: 0.1813 +/- 0.0054



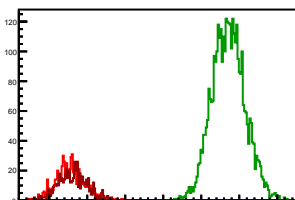
Cycle 5, PosHel

Entries: 1283	Entries: 3697	Entries: 702
Mean: 5.9819 +/- 0.0051	Mean: 8.2208 +/- 0.0038	Mean: 6.3602 +/- 0.0070
Std Dev: 0.1630 +/- 0.0036	Std Dev: 0.2310 +/- 0.0027	Std Dev: 0.1858 +/- 0.0050



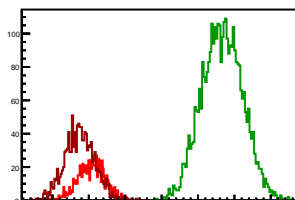
Cycle 6, PosHel

Entries: 687	Entries: 3692	Entries: 657
Mean: 6.2724 +/- 0.0072	Mean: 8.3585 +/- 0.0036	Mean: 6.3077 +/- 0.0074
Std Dev: 0.1891 +/- 0.0051	Std Dev: 0.2168 +/- 0.0025	Std Dev: 0.1896 +/- 0.0052



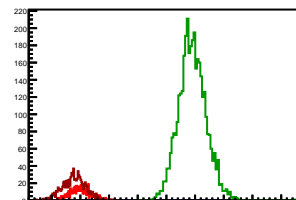
Cycle 7, PosHel

Entries: 791	Entries: 3547	Entries: 1228
Mean: 6.5395 +/- 0.0067	Mean: 8.3309 +/- 0.0047	Mean: 6.3762 +/- 0.0059
Std Dev: 0.1878 +/- 0.0047	Std Dev: 0.2273 +/- 0.0033	Std Dev: 0.2053 +/- 0.0041



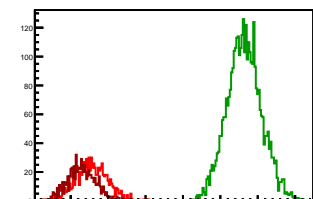
Cycle 8, PosHel

Entries: 575	Entries: 3674	Entries: 866
Mean: 6.5104 +/- 0.0076	Mean: 8.4529 +/- 0.0039	Mean: 6.3862 +/- 0.0068
Std Dev: 0.1811 +/- 0.0053	Std Dev: 0.2385 +/- 0.0028	Std Dev: 0.1991 +/- 0.0048



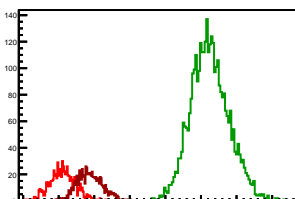
Cycle 9, PosHel

Entries: 833	Entries: 3725	Entries: 770
Mean: 6.2813 +/- 0.0073	Mean: 8.3204 +/- 0.0038	Mean: 6.1438 +/- 0.0066
Std Dev: 0.2110 +/- 0.0052	Std Dev: 0.2309 +/- 0.0027	Std Dev: 0.1838 +/- 0.0047



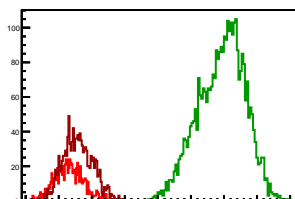
Cycle 10, PosHel

Entries: 761	Entries: 3534	Entries: 756
Mean: 6.0561 +/- 0.0065	Mean: 8.1239 +/- 0.0045	Mean: 6.4363 +/- 0.0064
Std Dev: 0.1784 +/- 0.0046	Std Dev: 0.2684 +/- 0.0032	Std Dev: 0.1761 +/- 0.0045



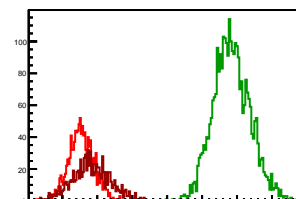
Cycle 11, PosHel

Entries: 755	Entries: 3453	Entries: 1247
Mean: 6.1590 +/- 0.0080	Mean: 8.4633 +/- 0.0060	Mean: 6.2904 +/- 0.0063
Std Dev: 0.2193 +/- 0.0056	Std Dev: 0.3515 +/- 0.0042	Std Dev: 0.2231 +/- 0.0045



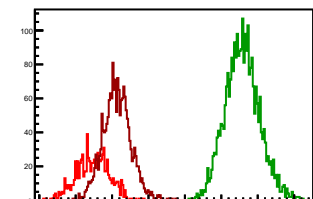
Cycle 12, PosHel

Entries: 1205	Entries: 3013	Entries: 873
Mean: 6.2734 +/- 0.0052	Mean: 8.4242 +/- 0.0048	Mean: 6.4130 +/- 0.0091
Std Dev: 0.1797 +/- 0.0037	Std Dev: 0.2645 +/- 0.0034	Std Dev: 0.2884 +/- 0.0064



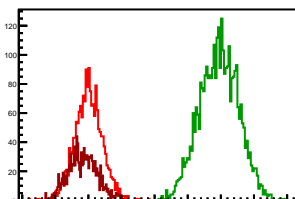
Cycle 13, PosHel

Entries: 894	Entries: 2913	Entries: 1842
Mean: 6.2381 +/- 0.0075	Mean: 8.2874 +/- 0.0044	Mean: 6.5663 +/- 0.0045
Std Dev: 0.2246 +/- 0.0053	Std Dev: 0.2352 +/- 0.0031	Std Dev: 0.1912 +/- 0.0031



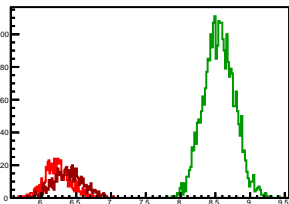
Cycle 14, PosHel

Entries: 1825	Entries: 3467	Entries: 1254
Mean: 6.4991 +/- 0.0048	Mean: 8.4716 +/- 0.0049	Mean: 6.4135 +/- 0.0061
Std Dev: 0.2059 +/- 0.0034	Std Dev: 0.2913 +/- 0.0035	Std Dev: 0.2160 +/- 0.0043



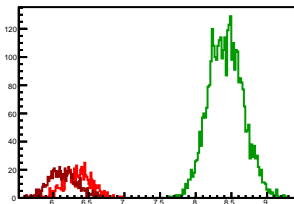
Cycle 1, NegHel

Entries: 665	Entries: 2999	Entries: 618
Mean: 6.2337 +/- 0.0073	Mean: 8.5530 +/- 0.0041	Mean: 6.3894 +/- 0.0086
Std Dev: 0.1875 +/- 0.0051	Std Dev: 0.2230 +/- 0.0029	Std Dev: 0.2149 +/- 0.0061



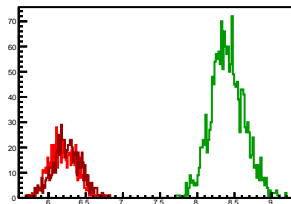
Cycle 2, NegHel

Entries: 616	Entries: 3678	Entries: 733
Mean: 6.3431 +/- 0.0077	Mean: 8.4216 +/- 0.0040	Mean: 6.1441 +/- 0.0072
Std Dev: 0.1922 +/- 0.0055	Std Dev: 0.2415 +/- 0.0028	Std Dev: 0.1955 +/- 0.0051



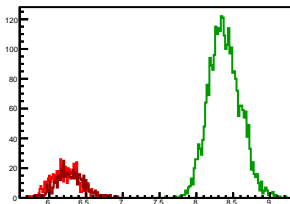
Cycle 3, NegHel

Entries: 705	Entries: 1860	Entries: 761
Mean: 6.2012 +/- 0.0068	Mean: 8.4081 +/- 0.0052	Mean: 6.2478 +/- 0.0068
Std Dev: 0.1814 +/- 0.0048	Std Dev: 0.2243 +/- 0.0037	Std Dev: 0.1874 +/- 0.0048



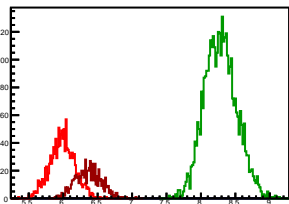
Cycle 4, NegHel

Entries: 723	Entries: 3152	Entries: 560
Mean: 6.2196 +/- 0.0071	Mean: 8.3832 +/- 0.0038	Mean: 6.2858 +/- 0.0062
Std Dev: 0.1910 +/- 0.0050	Std Dev: 0.2151 +/- 0.0027	Std Dev: 0.1952 +/- 0.0056



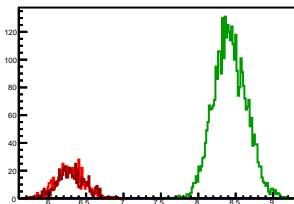
Cycle 5, NegHel

Entries: 1283	Entries: 3697	Entries: 702
Mean: 5.9871 +/- 0.0051	Mean: 8.2841 +/- 0.0038	Mean: 6.3660 +/- 0.0071
Std Dev: 0.1812 +/- 0.0036	Std Dev: 0.2337 +/- 0.0027	Std Dev: 0.1884 +/- 0.0050



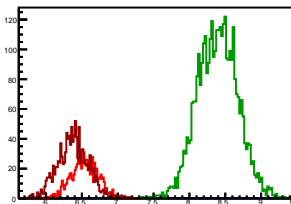
Cycle 6, NegHel

Entries: 687	Entries: 3692	Entries: 657
Mean: 6.2820 +/- 0.0072	Mean: 8.4252 +/- 0.0036	Mean: 6.3017 +/- 0.0075
Std Dev: 0.1888 +/- 0.0051	Std Dev: 0.2186 +/- 0.0025	Std Dev: 0.1922 +/- 0.0053



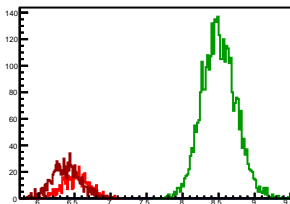
Cycle 7, NegHel

Entries: 791	Entries: 3547	Entries: 1228
Mean: 6.5377 +/- 0.0067	Mean: 8.3932 +/- 0.0047	Mean: 6.3762 +/- 0.0060
Std Dev: 0.1893 +/- 0.0048	Std Dev: 0.2778 +/- 0.0033	Std Dev: 0.2117 +/- 0.0043



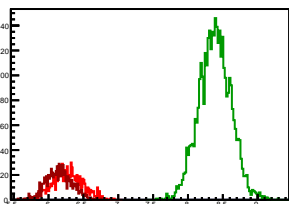
Cycle 8, NegHel

Entries: 575	Entries: 3674	Entries: 866
Mean: 6.5235 +/- 0.0077	Mean: 8.5060 +/- 0.0039	Mean: 6.3864 +/- 0.0068
Std Dev: 0.1851 +/- 0.0055	Std Dev: 0.2365 +/- 0.0028	Std Dev: 0.1999 +/- 0.0048



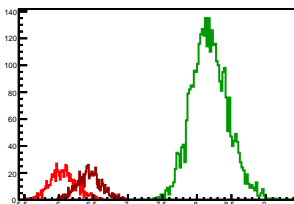
Cycle 9, NegHel

Entries: 833	Entries: 3725	Entries: 770
Mean: 6.2778 +/- 0.0073	Mean: 8.3854 +/- 0.0038	Mean: 6.1525 +/- 0.0066
Std Dev: 0.2101 +/- 0.0051	Std Dev: 0.2293 +/- 0.0027	Std Dev: 0.1832 +/- 0.0047



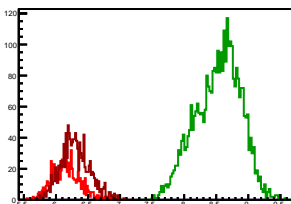
Cycle 10, NegHel

Entries: 761	Entries: 3534	Entries: 756
Mean: 6.0644 +/- 0.0068	Mean: 8.1848 +/- 0.0045	Mean: 6.4414 +/- 0.0065
Std Dev: 0.1874 +/- 0.0048	Std Dev: 0.2656 +/- 0.0032	Std Dev: 0.1776 +/- 0.0046



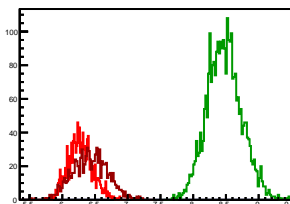
Cycle 11, NegHel

Entries: 755	Entries: 3453	Entries: 1247
Mean: 6.1577 +/- 0.0077	Mean: 8.5284 +/- 0.0060	Mean: 6.2989 +/- 0.0064
Std Dev: 0.2117 +/- 0.0054	Std Dev: 0.3503 +/- 0.0042	Std Dev: 0.2243 +/- 0.0045



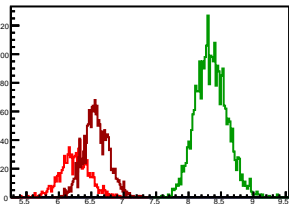
Cycle 12, NegHel

Entries: 1205	Entries: 3013	Entries: 873
Mean: 6.2774 +/- 0.0054	Mean: 8.4770 +/- 0.0048	Mean: 6.4243 +/- 0.0090
Std Dev: 0.1863 +/- 0.0038	Std Dev: 0.2655 +/- 0.0034	Std Dev: 0.2863 +/- 0.0064



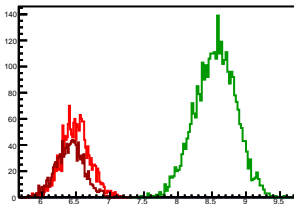
Cycle 13, NegHel

Entries: 894	Entries: 2913	Entries: 1842
Mean: 6.2475 +/- 0.0075	Mean: 8.3520 +/- 0.0045	Mean: 6.5742 +/- 0.0045
Std Dev: 0.2244 +/- 0.0053	Std Dev: 0.2407 +/- 0.0032	Std Dev: 0.1911 +/- 0.0031



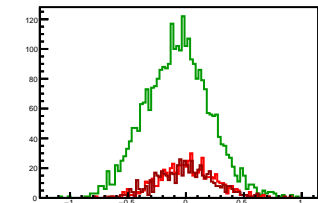
Cycle 14, NegHel

Entries: 1825	Entries: 3467	Entries: 1254
Mean: 6.4948 +/- 0.0049	Mean: 8.5476 +/- 0.0050	Mean: 6.4115 +/- 0.0058
Std Dev: 0.2090 +/- 0.0035	Std Dev: 0.2959 +/- 0.0036	Std Dev: 0.2052 +/- 0.0041



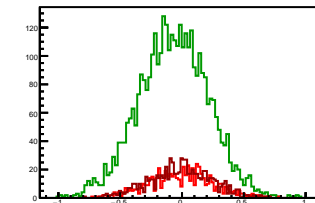
Cycle 1, Diffs

Entries: 665	Entries: 2999	Entries: 618
Mean: 0.0110 +/- 0.0094	Mean: -0.0700 +/- 0.0051	Mean: -0.0052 +/- 0.0098
Std Dev: 0.2431 +/- 0.0067	Std Dev: 0.2810 +/- 0.0036	Std Dev: 0.2448 +/- 0.0070



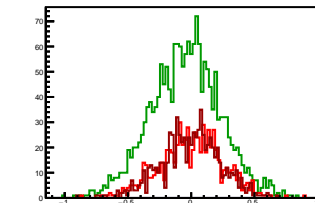
Cycle 2, Diffs

Entries: 616	Entries: 3678	Entries: 733
Mean: -0.0033 +/- 0.0103	Mean: -0.0694 +/- 0.0047	Mean: -0.0124 +/- 0.0092
Std Dev: 0.2563 +/- 0.0073	Std Dev: 0.2820 +/- 0.0033	Std Dev: 0.2503 +/- 0.0065



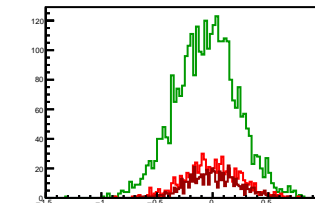
Cycle 3, Diffs

Entries: 705	Entries: 1860	Entries: 761
Mean: -0.0008 +/- 0.0095	Mean: -0.0448 +/- 0.0064	Mean: -0.0039 +/- 0.0085
Std Dev: 0.2518 +/- 0.0067	Std Dev: 0.2758 +/- 0.0045	Std Dev: 0.2349 +/- 0.0060



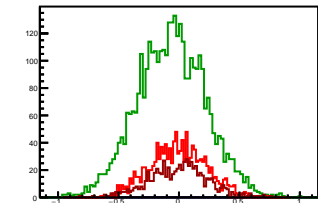
Cycle 4, Diffs

Entries: 723	Entries: 3152	Entries: 560
Mean: -0.0082 +/- 0.0094	Mean: -0.0559 +/- 0.0050	Mean: 0.0024 +/- 0.0097
Std Dev: 0.2533 +/- 0.0067	Std Dev: 0.2804 +/- 0.0035	Std Dev: 0.2306 +/- 0.0069



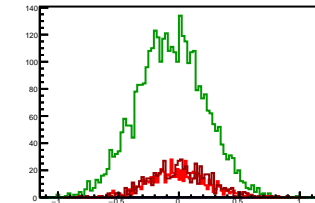
Cycle 5, Diffs

Entries: 1283	Entries: 3697	Entries: 702
Mean: -0.0052 +/- 0.0065	Mean: -0.0633 +/- 0.0046	Mean: -0.0057 +/- 0.0089
Std Dev: 0.2342 +/- 0.0046	Std Dev: 0.2824 +/- 0.0033	Std Dev: 0.2366 +/- 0.0063



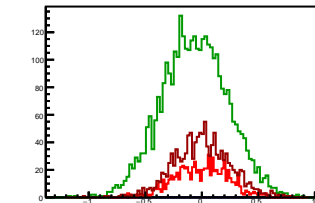
Cycle 6, Diffs

Entries: 687	Entries: 3692	Entries: 657
Mean: -0.0096 +/- 0.0093	Mean: -0.0667 +/- 0.0046	Mean: 0.0060 +/- 0.0097
Std Dev: 0.2437 +/- 0.0068	Std Dev: 0.2796 +/- 0.0033	Std Dev: 0.2475 +/- 0.0068



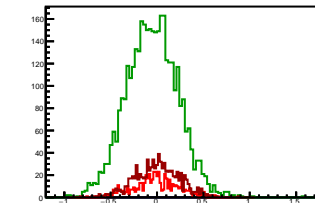
Cycle 7, Diffs

Entries: 791	Entries: 3547	Entries: 1228
Mean: 0.0018 +/- 0.0084	Mean: -0.0623 +/- 0.0049	Mean: -0.0000 +/- 0.0070
Std Dev: 0.2369 +/- 0.0060	Std Dev: 0.2907 +/- 0.0035	Std Dev: 0.2466 +/- 0.0050



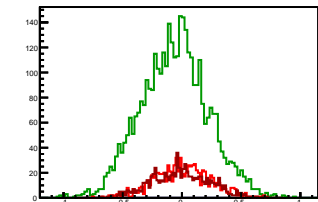
Cycle 8, Diffs

Entries: 575	Entries: 3674	Entries: 866
Mean: -0.0131 +/- 0.0102	Mean: -0.0530 +/- 0.0046	Mean: -0.0002 +/- 0.0080
Std Dev: 0.2443 +/- 0.0072	Std Dev: 0.2776 +/- 0.0032	Std Dev: 0.2366 +/- 0.0057



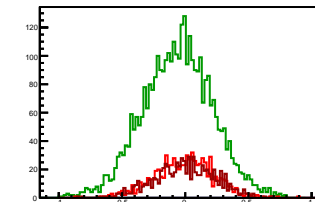
Cycle 9, Diffs

Entries: 833	Entries: 3725	Entries: 770
Mean: 0.0035 +/- 0.0082	Mean: -0.0650 +/- 0.0047	Mean: -0.0087 +/- 0.0088
Std Dev: 0.2359 +/- 0.0058	Std Dev: 0.2840 +/- 0.0033	Std Dev: 0.2430 +/- 0.0062



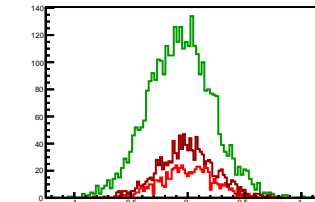
Cycle 10, Diffs

Entries: 761	Entries: 3534	Entries: 756
Mean: -0.0083 +/- 0.0086	Mean: -0.0609 +/- 0.0047	Mean: -0.0052 +/- 0.0087
Std Dev: 0.2370 +/- 0.0061	Std Dev: 0.2778 +/- 0.0033	Std Dev: 0.2391 +/- 0.0061



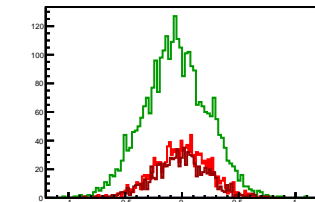
Cycle 11, Diffs

Entries: 755	Entries: 3453	Entries: 1247
Mean: 0.0014 +/- 0.0084	Mean: -0.0651 +/- 0.0048	Mean: -0.0085 +/- 0.0069
Std Dev: 0.2315 +/- 0.0060	Std Dev: 0.2845 +/- 0.0034	Std Dev: 0.2452 +/- 0.0049



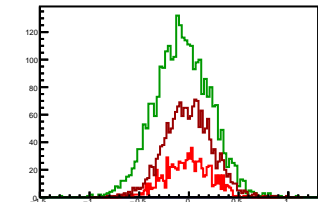
Cycle 12, Diffs

Entries: 1205	Entries: 3013	Entries: 873
Mean: -0.0040 +/- 0.0067	Mean: -0.0528 +/- 0.0051	Mean: -0.0113 +/- 0.0082
Std Dev: 0.2341 +/- 0.0048	Std Dev: 0.2803 +/- 0.0036	Std Dev: 0.2420 +/- 0.0058



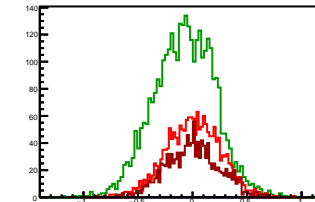
Cycle 13, Diffs

Entries: 894	Entries: 2913	Entries: 1842
Mean: -0.0093 +/- 0.0077	Mean: -0.0645 +/- 0.0052	Mean: -0.0079 +/- 0.0056
Std Dev: 0.2316 +/- 0.0055	Std Dev: 0.2784 +/- 0.0036	Std Dev: 0.2392 +/- 0.0039



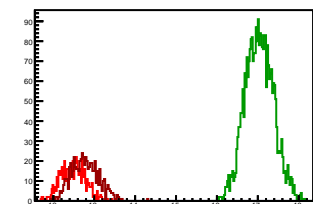
Cycle 14, Diffs

Entries: 1825	Entries: 3467	Entries: 1254
Mean: 0.0043 +/- 0.0057	Mean: -0.0759 +/- 0.0047	Mean: 0.0019 +/- 0.0069
Std Dev: 0.2456 +/- 0.0041	Std Dev: 0.2788 +/- 0.0033	Std Dev: 0.2443 +/- 0.0049



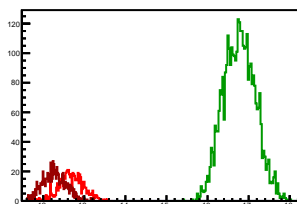
Cycle 1, Sums

Entries: 665	Entries: 2999	Entries: 618
Mean: 12.4784 +/- 0.0115	Mean: 17.0359 +/- 0.0063	Mean: 12.7737 +/- 0.0135
Std Dev: 0.2963 +/- 0.0081	Std Dev: 0.3462 +/- 0.0045	Std Dev: 0.3355 +/- 0.0095



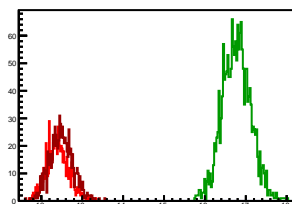
Cycle 2, Sums

Entries: 616	Entries: 3678	Entries: 733
Mean: 12.6830 +/- 0.0119	Mean: 16.7739 +/- 0.0064	Mean: 12.2757 +/- 0.0106
Std Dev: 0.2946 +/- 0.0084	Std Dev: 0.3867 +/- 0.0045	Std Dev: 0.2882 +/- 0.0075



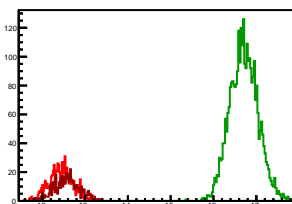
Cycle 3, Sums

Entries: 705	Entries: 1860	Entries: 761
Mean: 12.4017 +/- 0.0102	Mean: 16.7715 +/- 0.0080	Mean: 12.4918 +/- 0.0103
Std Dev: 0.2707 +/- 0.0072	Std Dev: 0.3467 +/- 0.0057	Std Dev: 0.2843 +/- 0.0073



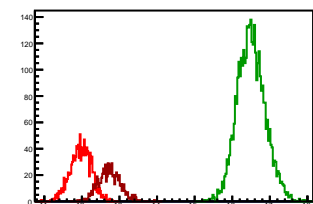
Cycle 4, Sums

Entries: 723	Entries: 3152	Entries: 560
Mean: 12.4310 +/- 0.0105	Mean: 16.7105 +/- 0.0058	Mean: 12.5740 +/- 0.0126
Std Dev: 0.2824 +/- 0.0074	Std Dev: 0.3250 +/- 0.0041	Std Dev: 0.2979 +/- 0.0089



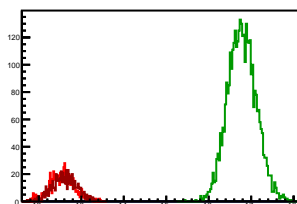
Cycle 5, Sums

Entries: 1283	Entries: 3697	Entries: 702
Mean: 11.9690 +/- 0.0078	Mean: 16.5048 +/- 0.0061	Mean: 12.7262 +/- 0.0109
Std Dev: 0.2788 +/- 0.0055	Std Dev: 0.3691 +/- 0.0043	Std Dev: 0.2898 +/- 0.0077



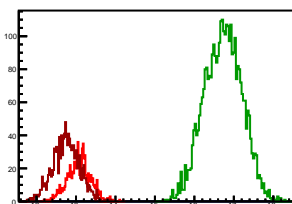
Cycle 6, Sums

Entries: 687	Entries: 3692	Entries: 657
Mean: 12.5544 +/- 0.0110	Mean: 16.7837 +/- 0.0055	Mean: 12.6093 +/- 0.0113
Std Dev: 0.2889 +/- 0.0078	Std Dev: 0.3337 +/- 0.0039	Std Dev: 0.2907 +/- 0.0080



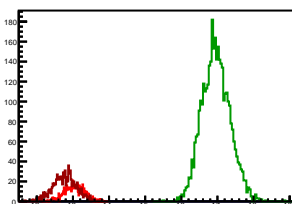
Cycle 7, Sums

Entries: 791	Entries: 3547	Entries: 1228
Mean: 13.0772 +/- 0.0104	Mean: 16.7242 +/- 0.0079	Mean: 12.7524 +/- 0.0096
Std Dev: 0.2933 +/- 0.0074	Std Dev: 0.4730 +/- 0.0056	Std Dev: 0.3363 +/- 0.0068



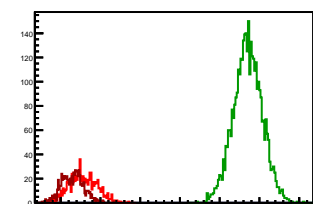
Cycle 8, Sums

Entries: 575	Entries: 3674	Entries: 866
Mean: 13.0339 +/- 0.0114	Mean: 16.9589 +/- 0.0064	Mean: 12.7726 +/- 0.0109
Std Dev: 0.2728 +/- 0.0080	Std Dev: 0.3854 +/- 0.0045	Std Dev: 0.3213 +/- 0.0077



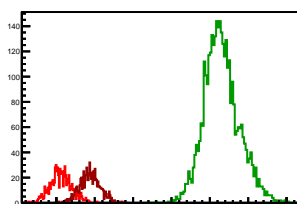
Cycle 9, Sums

Entries: 833	Entries: 3725	Entries: 770
Mean: 12.5591 +/- 0.0121	Mean: 16.7058 +/- 0.0059	Mean: 12.2963 +/- 0.0099
Std Dev: 0.3487 +/- 0.0085	Std Dev: 0.3621 +/- 0.0042	Std Dev: 0.2751 +/- 0.0070



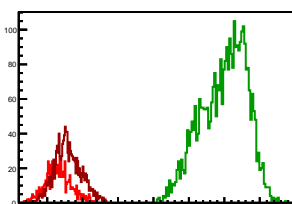
Cycle 10, Sums

Entries: 761	Entries: 3534	Entries: 756
Mean: 12.1205 +/- 0.0101	Mean: 16.3087 +/- 0.0077	Mean: 12.8777 +/- 0.0095
Std Dev: 0.2787 +/- 0.0071	Std Dev: 0.4562 +/- 0.0054	Std Dev: 0.2607 +/- 0.0067



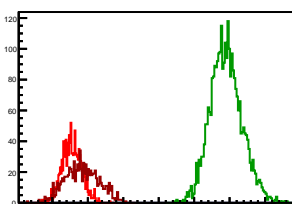
Cycle 11, Sums

Entries: 755	Entries: 3453	Entries: 1247
Mean: 12.3167 +/- 0.0132	Mean: 16.9916 +/- 0.0109	Mean: 12.5893 +/- 0.0106
Std Dev: 0.3636 +/- 0.0094	Std Dev: 0.6415 +/- 0.0077	Std Dev: 0.3742 +/- 0.0075



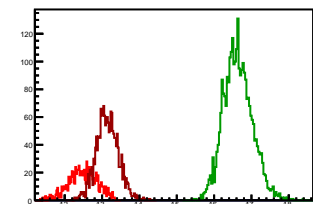
Cycle 12, Sums

Entries: 1205	Entries: 3013	Entries: 873
Mean: 12.5508 +/- 0.0081	Mean: 16.9012 +/- 0.0082	Mean: 12.8373 +/- 0.0161
Std Dev: 0.2815 +/- 0.0057	Std Dev: 0.4498 +/- 0.0058	Std Dev: 0.4767 +/- 0.0114



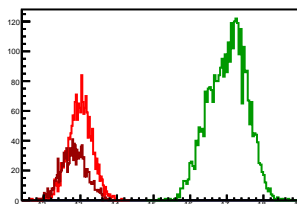
Cycle 13, Sums

Entries: 894	Entries: 2913	Entries: 1842
Mean: 12.4856 +/- 0.0129	Mean: 16.6394 +/- 0.0072	Mean: 13.1404 +/- 0.0069
Std Dev: 0.3847 +/- 0.0091	Std Dev: 0.3860 +/- 0.0051	Std Dev: 0.2983 +/- 0.0049



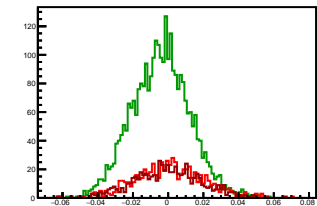
Cycle 14, Sums

Entries: 1825	Entries: 3467	Entries: 1254
Mean: 12.9939 +/- 0.0078	Mean: 17.0192 +/- 0.0088	Mean: 12.8250 +/- 0.0097
Std Dev: 0.3344 +/- 0.0055	Std Dev: 0.5169 +/- 0.0062	Std Dev: 0.3432 +/- 0.0069



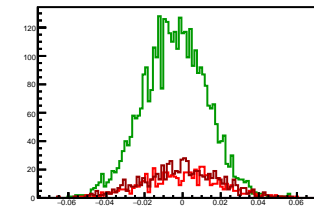
Cycle 1, Asyms

Entries: 655	Entries: 2999	Entries: 618
Mean: 0.0009 +/- 0.0008	Mean: -0.0041 +/- 0.0003	Mean: -0.0004 +/- 0.0008
Std Dev: 0.0194 +/- 0.0005	Std Dev: 0.0165 +/- 0.0002	Std Dev: 0.0192 +/- 0.0005



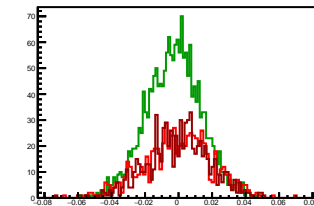
Cycle 2, Asyms

Entries: 616	Entries: 3678	Entries: 733
Mean: -0.0003 +/- 0.0006	Mean: -0.0041 +/- 0.0003	Mean: -0.0010 +/- 0.0008
Std Dev: 0.0202 +/- 0.0006	Std Dev: 0.0168 +/- 0.0002	Std Dev: 0.0203 +/- 0.0005



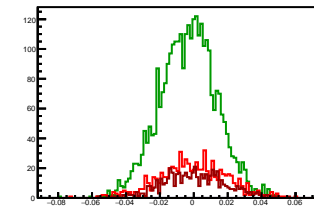
Cycle 3, Asyms

Entries: 705	Entries: 1860	Entries: 761
Mean: -0.0001 +/- 0.0006	Mean: -0.0027 +/- 0.0004	Mean: -0.0003 +/- 0.0007
Std Dev: 0.0203 +/- 0.0005	Std Dev: 0.0164 +/- 0.0003	Std Dev: 0.0188 +/- 0.0005



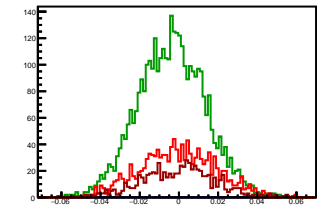
Cycle 4, Asyms

Entries: 723	Entries: 3152	Entries: 560
Mean: -0.0007 +/- 0.0006	Mean: -0.0033 +/- 0.0003	Mean: 0.0002 +/- 0.0008
Std Dev: 0.0203 +/- 0.0005	Std Dev: 0.0167 +/- 0.0002	Std Dev: 0.0183 +/- 0.0005



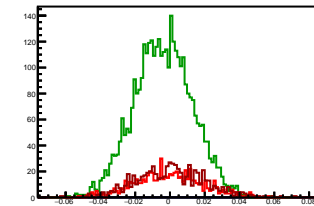
Cycle 5, Asyms

Entries: 1283	Entries: 3697	Entries: 702
Mean: -0.0004 +/- 0.0005	Mean: -0.0038 +/- 0.0003	Mean: -0.0004 +/- 0.0007
Std Dev: 0.0195 +/- 0.0004	Std Dev: 0.0171 +/- 0.0002	Std Dev: 0.0185 +/- 0.0005



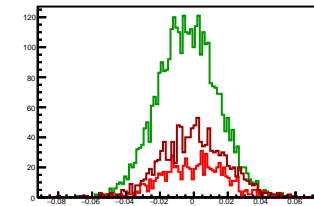
Cycle 6, Asyms

Entries: 687	Entries: 3692	Entries: 657
Mean: -0.0008 +/- 0.0007	Mean: -0.0040 +/- 0.0003	Mean: 0.0005 +/- 0.0008
Std Dev: 0.0194 +/- 0.0005	Std Dev: 0.0166 +/- 0.0002	Std Dev: 0.0196 +/- 0.0005



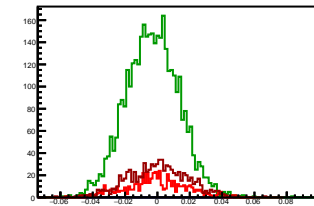
Cycle 7, Asyms

Entries: 791	Entries: 3547	Entries: 1228
Mean: 0.0001 +/- 0.0006	Mean: -0.0037 +/- 0.0003	Mean: 0.0000 +/- 0.0006
Std Dev: 0.0181 +/- 0.0005	Std Dev: 0.0174 +/- 0.0002	Std Dev: 0.0193 +/- 0.0004



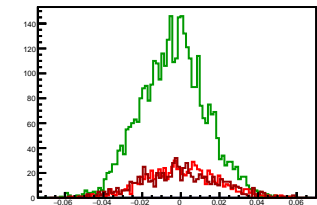
Cycle 8, Asyms

Entries: 575	Entries: 3674	Entries: 866
Mean: -0.0010 +/- 0.0006	Mean: -0.0031 +/- 0.0003	Mean: -0.0000 +/- 0.0006
Std Dev: 0.0187 +/- 0.0006	Std Dev: 0.0163 +/- 0.0002	Std Dev: 0.0185 +/- 0.0004



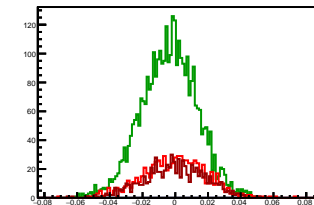
Cycle 9, Asyms

Entries: 833	Entries: 3725	Entries: 770
Mean: 0.0003 +/- 0.0006	Mean: -0.0039 +/- 0.0003	Mean: -0.0007 +/- 0.0007
Std Dev: 0.0187 +/- 0.0005	Std Dev: 0.0170 +/- 0.0002	Std Dev: 0.0197 +/- 0.0005



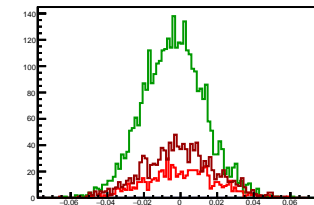
Cycle 10, Asyms

Entries: 761	Entries: 3534	Entries: 756
Mean: -0.0007 +/- 0.0007	Mean: -0.0037 +/- 0.0003	Mean: -0.0004 +/- 0.0007
Std Dev: 0.0195 +/- 0.0005	Std Dev: 0.0170 +/- 0.0002	Std Dev: 0.0185 +/- 0.0005



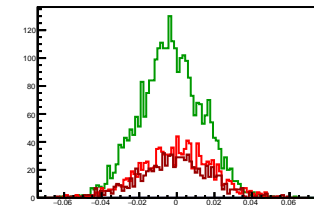
Cycle 11, Asyms

Entries: 755	Entries: 3453	Entries: 1247
Mean: 0.0001 +/- 0.0007	Mean: -0.0038 +/- 0.0003	Mean: -0.0007 +/- 0.0005
Std Dev: 0.0188 +/- 0.0005	Std Dev: 0.0168 +/- 0.0002	Std Dev: 0.0194 +/- 0.0004



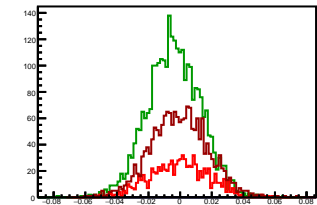
Cycle 12, Asyms

Entries: 1205	Entries: 3013	Entries: 873
Mean: -0.0003 +/- 0.0005	Mean: -0.0031 +/- 0.0003	Mean: -0.0009 +/- 0.0006
Std Dev: 0.0186 +/- 0.0004	Std Dev: 0.0166 +/- 0.0002	Std Dev: 0.0189 +/- 0.0005



Cycle 13, Asyms

Entries: 894	Entries: 2913	Entries: 1842
Mean: -0.0007 +/- 0.0004	Mean: -0.0039 +/- 0.0003	Mean: -0.0006 +/- 0.0004
Std Dev: 0.0185 +/- 0.0004	Std Dev: 0.0167 +/- 0.0002	Std Dev: 0.0182 +/- 0.0003



Cycle 14, Asyms

Entries: 1825	Entries: 3467	Entries: 1254
Mean: 0.0003 +/- 0.0004	Mean: -0.0045 +/- 0.0003	Mean: 0.0001 +/- 0.0005
Std Dev: 0.0189 +/- 0.0003	Std Dev: 0.0164 +/- 0.0002	Std Dev: 0.0190 +/- 0.0004

