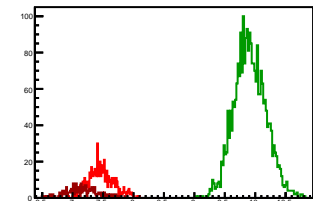


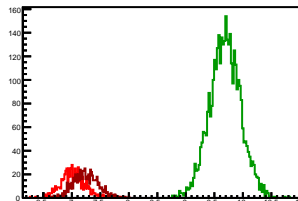
### Cycle 1, PosHel

Entries: 588	Entries: 2631	Entries: 196
Mean: 7.4650 +/- 0.0089	Mean: 9.9141 +/- 0.0051	Mean: 7.1571 +/- 0.0181
Std Dev: 0.2149 +/- 0.0063	Std Dev: 0.2614 +/- 0.0036	Std Dev: 0.2540 +/- 0.0128



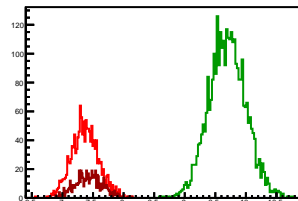
### Cycle 2, PosHel

Entries: 603	Entries: 3701	Entries: 686
Mean: 7.0168 +/- 0.0085	Mean: 9.6872 +/- 0.0045	Mean: 7.2442 +/- 0.0083
Std Dev: 0.2097 +/- 0.0060	Std Dev: 0.2717 +/- 0.0032	Std Dev: 0.2163 +/- 0.0058



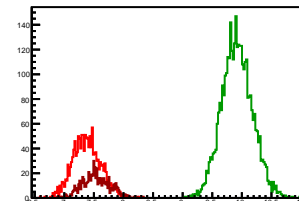
### Cycle 3, PosHel

Entries: 1443	Entries: 3317	Entries: 576
Mean: 7.3701 +/- 0.0058	Mean: 9.6960 +/- 0.0052	Mean: 7.4309 +/- 0.0092
Std Dev: 0.2203 +/- 0.0041	Std Dev: 0.3022 +/- 0.0037	Std Dev: 0.2209 +/- 0.0065



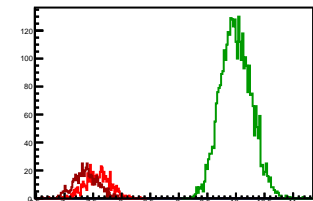
### Cycle 4, PosHel

Entries: 1467	Entries: 3654	Entries: 619
Mean: 7.3788 +/- 0.0061	Mean: 9.9192 +/- 0.0043	Mean: 7.5347 +/- 0.0093
Std Dev: 0.2344 +/- 0.0043	Std Dev: 0.2607 +/- 0.0030	Std Dev: 0.2323 +/- 0.0066



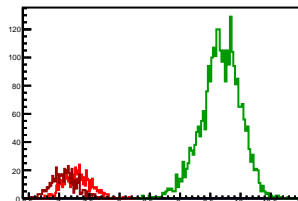
### Cycle 5, PosHel

Entries: 609	Entries: 3674	Entries: 608
Mean: 7.5800 +/- 0.0068	Mean: 9.9990 +/- 0.0044	Mean: 7.3741 +/- 0.0087
Std Dev: 0.2176 +/- 0.0062	Std Dev: 0.2686 +/- 0.0031	Std Dev: 0.2144 +/- 0.0061



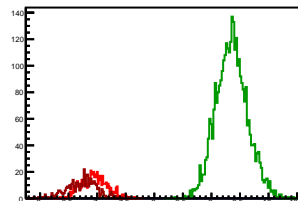
### Cycle 6, PosHel

Entries: 606	Entries: 3073	Entries: 613
Mean: 7.3014 +/- 0.0092	Mean: 9.6734 +/- 0.0058	Mean: 7.0862 +/- 0.0084
Std Dev: 0.2256 +/- 0.0065	Std Dev: 0.3228 +/- 0.0041	Std Dev: 0.2091 +/- 0.0060



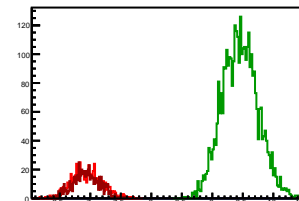
### Cycle 7, PosHel

Entries: 608	Entries: 3299	Entries: 429
Mean: 6.9500 +/- 0.0092	Mean: 9.3573 +/- 0.0048	Mean: 6.7356 +/- 0.0130
Std Dev: 0.2278 +/- 0.0065	Std Dev: 0.2765 +/- 0.0034	Std Dev: 0.2687 +/- 0.0092



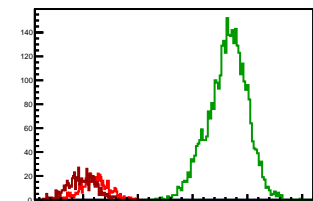
### Cycle 8, PosHel

Entries: 646	Entries: 3667	Entries: 639
Mean: 6.9401 +/- 0.0096	Mean: 9.4559 +/- 0.0046	Mean: 6.9342 +/- 0.0088
Std Dev: 0.2451 +/- 0.0068	Std Dev: 0.2929 +/- 0.0034	Std Dev: 0.2223 +/- 0.0062



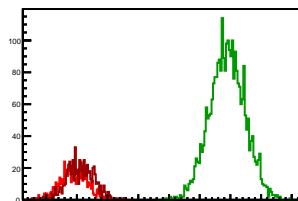
### Cycle 9, PosHel

Entries: 637	Entries: 3755	Entries: 655
Mean: 7.2206 +/- 0.0100	Mean: 9.6382 +/- 0.0058	Mean: 6.9841 +/- 0.0100
Std Dev: 0.2524 +/- 0.0071	Std Dev: 0.3530 +/- 0.0041	Std Dev: 0.2564 +/- 0.0071



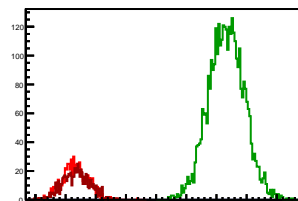
### Cycle 10, PosHel

Entries: 648	Entries: 2911	Entries: 679
Mean: 6.9529 +/- 0.0089	Mean: 9.4495 +/- 0.0053	Mean: 7.0587 +/- 0.0085
Std Dev: 0.2258 +/- 0.0063	Std Dev: 0.2873 +/- 0.0038	Std Dev: 0.2227 +/- 0.0060



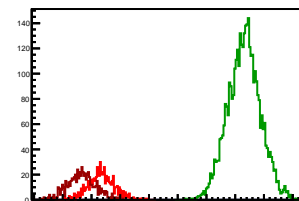
### Cycle 11, PosHel

Entries: 663	Entries: 3673	Entries: 656
Mean: 7.1530 +/- 0.0087	Mean: 9.6827 +/- 0.0049	Mean: 7.1775 +/- 0.0089
Std Dev: 0.2228 +/- 0.0061	Std Dev: 0.2961 +/- 0.0035	Std Dev: 0.2282 +/- 0.0063



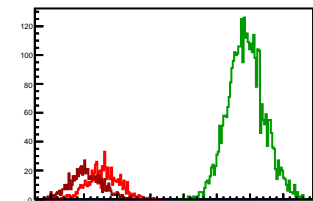
### Cycle 12, PosHel

Entries: 655	Entries: 3785	Entries: 645
Mean: 7.1743 +/- 0.0092	Mean: 9.6538 +/- 0.0046	Mean: 6.8271 +/- 0.0097
Std Dev: 0.2349 +/- 0.0065	Std Dev: 0.2829 +/- 0.0033	Std Dev: 0.2455 +/- 0.0068



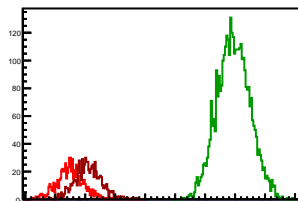
### Cycle 13, PosHel

Entries: 687	Entries: 3717	Entries: 723
Mean: 7.2890 +/- 0.0090	Mean: 9.4403 +/- 0.0045	Mean: 7.0278 +/- 0.0088
Std Dev: 0.2358 +/- 0.0064	Std Dev: 0.2716 +/- 0.0031	Std Dev: 0.2358 +/- 0.0062



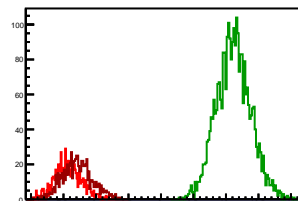
### Cycle 14, PosHel

Entries: 716	Entries: 3776	Entries: 737
Mean: 7.2510 +/- 0.0084	Mean: 9.9750 +/- 0.0044	Mean: 7.5530 +/- 0.0081
Std Dev: 0.2246 +/- 0.0059	Std Dev: 0.2718 +/- 0.0031	Std Dev: 0.2204 +/- 0.0057



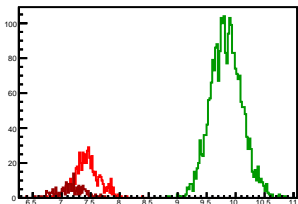
### Cycle 15, PosHel

Entries: 731	Entries: 2879	Entries: 756
Mean: 7.5698 +/- 0.0076	Mean: 10.1166 +/- 0.0049	Mean: 7.7144 +/- 0.0083
Std Dev: 0.2057 +/- 0.0054	Std Dev: 0.2636 +/- 0.0035	Std Dev: 0.2275 +/- 0.0058



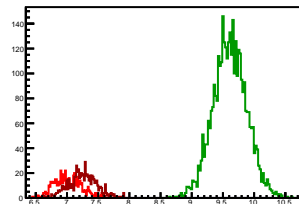
## Cycle 1, NegHel

Entries: 588	Entries: 2631	Entries: 196
Mean: 7.4399 +/- 0.0091	Mean: 9.8380 +/- 0.0053	Mean: 7.1468 +/- 0.0177
Std Dev: 0.2198 +/- 0.0064	Std Dev: 0.2693 +/- 0.0037	Std Dev: 0.2482 +/- 0.0125



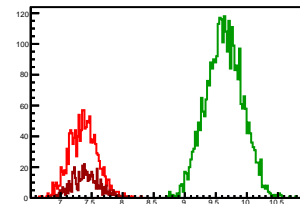
## Cycle 2, NegHel

Entries: 603	Entries: 3701	Entries: 686
Mean: 7.0127 +/- 0.0090	Mean: 9.6112 +/- 0.0044	Mean: 7.2543 +/- 0.0085
Std Dev: 0.2201 +/- 0.0063	Std Dev: 0.2698 +/- 0.0031	Std Dev: 0.2228 +/- 0.0060



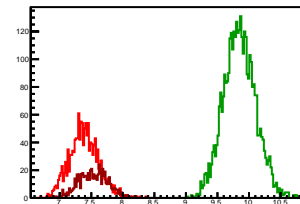
## Cycle 3, NegHel

Entries: 1443	Entries: 3317	Entries: 576
Mean: 7.3710 +/- 0.0060	Mean: 9.6337 +/- 0.0051	Mean: 7.4085 +/- 0.0093
Std Dev: 0.2261 +/- 0.0042	Std Dev: 0.2940 +/- 0.0036	Std Dev: 0.2223 +/- 0.0065



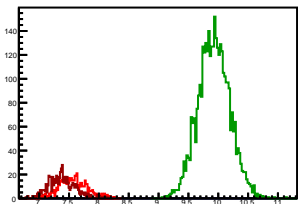
## Cycle 4, NegHel

Entries: 1467	Entries: 3654	Entries: 619
Mean: 7.3864 +/- 0.0060	Mean: 9.8502 +/- 0.0042	Mean: 7.5363 +/- 0.0093
Std Dev: 0.2310 +/- 0.0043	Std Dev: 0.2548 +/- 0.0030	Std Dev: 0.2318 +/- 0.0066



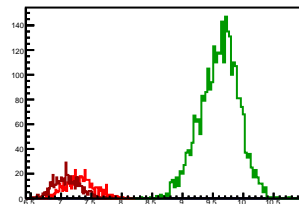
## Cycle 5, NegHel

Entries: 609	Entries: 3674	Entries: 608
Mean: 7.5684 +/- 0.0094	Mean: 9.9280 +/- 0.0044	Mean: 7.3774 +/- 0.0091
Std Dev: 0.2318 +/- 0.0066	Std Dev: 0.2658 +/- 0.0031	Std Dev: 0.2251 +/- 0.0065



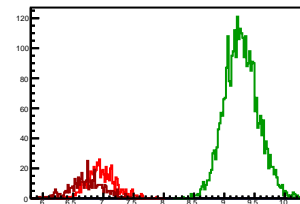
## Cycle 6, NegHel

Entries: 606	Entries: 3073	Entries: 613
Mean: 7.3158 +/- 0.0097	Mean: 9.6036 +/- 0.0057	Mean: 7.0923 +/- 0.0088
Std Dev: 0.2390 +/- 0.0069	Std Dev: 0.3183 +/- 0.0041	Std Dev: 0.2171 +/- 0.0062



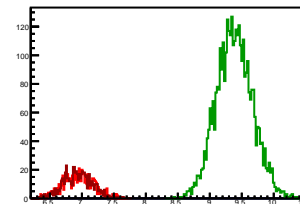
## Cycle 7, NegHel

Entries: 608	Entries: 3299	Entries: 429
Mean: 6.9724 +/- 0.0096	Mean: 9.2819 +/- 0.0048	Mean: 6.7342 +/- 0.0133
Std Dev: 0.2358 +/- 0.0068	Std Dev: 0.2774 +/- 0.0034	Std Dev: 0.2760 +/- 0.0094



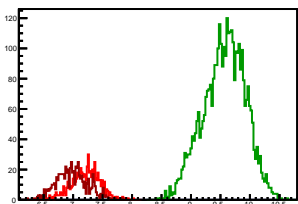
## Cycle 8, NegHel

Entries: 646	Entries: 3667	Entries: 639
Mean: 6.9436 +/- 0.0096	Mean: 9.3866 +/- 0.0047	Mean: 6.9380 +/- 0.0088
Std Dev: 0.2445 +/- 0.0068	Std Dev: 0.2820 +/- 0.0033	Std Dev: 0.2237 +/- 0.0063



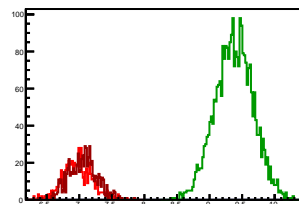
## Cycle 9, NegHel

Entries: 637	Entries: 3755	Entries: 655
Mean: 7.2128 +/- 0.0096	Mean: 9.5646 +/- 0.0058	Mean: 6.9847 +/- 0.0102
Std Dev: 0.2429 +/- 0.0068	Std Dev: 0.3554 +/- 0.0041	Std Dev: 0.2604 +/- 0.0072



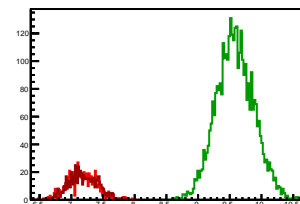
## Cycle 10, NegHel

Entries: 648	Entries: 2911	Entries: 679
Mean: 6.9734 +/- 0.0089	Mean: 9.3768 +/- 0.0054	Mean: 7.0603 +/- 0.0083
Std Dev: 0.2269 +/- 0.0063	Std Dev: 0.2921 +/- 0.0038	Std Dev: 0.2171 +/- 0.0059



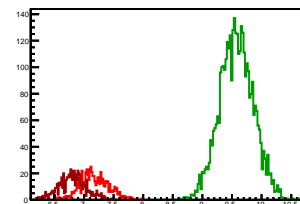
## Cycle 11, NegHel

Entries: 663	Entries: 3673	Entries: 656
Mean: 7.1642 +/- 0.0087	Mean: 9.5831 +/- 0.0049	Mean: 7.1888 +/- 0.0088
Std Dev: 0.2241 +/- 0.0062	Std Dev: 0.2968 +/- 0.0035	Std Dev: 0.2249 +/- 0.0062



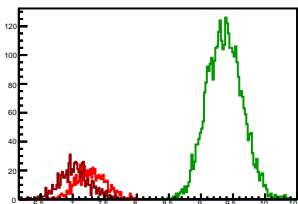
## Cycle 12, NegHel

Entries: 655	Entries: 3785	Entries: 645
Mean: 7.1742 +/- 0.0092	Mean: 9.5765 +/- 0.0046	Mean: 6.8084 +/- 0.0090
Std Dev: 0.2351 +/- 0.0065	Std Dev: 0.2839 +/- 0.0033	Std Dev: 0.2281 +/- 0.0063



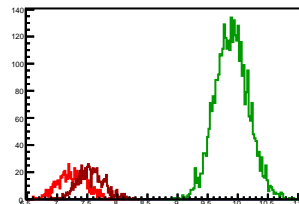
## Cycle 13, NegHel

Entries: 687	Entries: 3717	Entries: 723
Mean: 7.2920 +/- 0.0068	Mean: 9.3700 +/- 0.0045	Mean: 7.0358 +/- 0.0088
Std Dev: 0.2310 +/- 0.0062	Std Dev: 0.2735 +/- 0.0032	Std Dev: 0.2360 +/- 0.0062



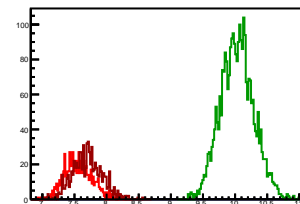
## Cycle 14, NegHel

Entries: 716	Entries: 3776	Entries: 737
Mean: 7.2551 +/- 0.0089	Mean: 9.9002 +/- 0.0045	Mean: 7.5632 +/- 0.0082
Std Dev: 0.2379 +/- 0.0063	Std Dev: 0.2773 +/- 0.0032	Std Dev: 0.2214 +/- 0.0058



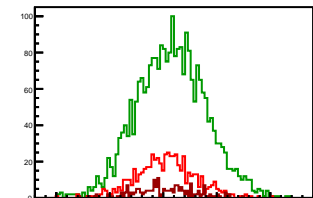
## Cycle 15, NegHel

Entries: 731	Entries: 2879	Entries: 756
Mean: 7.5553 +/- 0.0079	Mean: 10.0325 +/- 0.0048	Mean: 7.7013 +/- 0.0083
Std Dev: 0.2144 +/- 0.0056	Std Dev: 0.2594 +/- 0.0034	Std Dev: 0.2286 +/- 0.0059



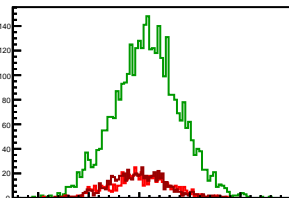
### Cycle 1, Diffs

Entries: 588	Entries: 2631	Entries: 196
Mean: 0.0251 +/- 0.0114	Mean: 0.0761 +/- 0.0063	Mean: 0.0103 +/- 0.0196
Std Dev: 0.2762 +/- 0.0081	Std Dev: 0.3230 +/- 0.0045	Std Dev: 0.2742 +/- 0.0139



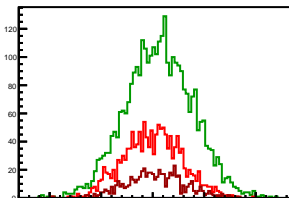
### Cycle 2, Diffs

Entries: 603	Entries: 3701	Entries: 686
Mean: 0.0042 +/- 0.0118	Mean: 0.0759 +/- 0.0053	Mean: -0.0100 +/- 0.0106
Std Dev: 0.2903 +/- 0.0084	Std Dev: 0.3205 +/- 0.0037	Std Dev: 0.2789 +/- 0.0075



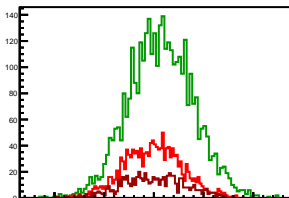
### Cycle 3, Diffs

Entries: 1443	Entries: 3317	Entries: 576
Mean: -0.0010 +/- 0.0074	Mean: 0.0624 +/- 0.0057	Mean: 0.0224 +/- 0.0118
Std Dev: 0.2810 +/- 0.0052	Std Dev: 0.3261 +/- 0.0040	Std Dev: 0.2821 +/- 0.0083



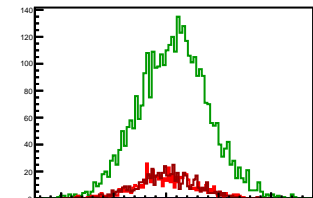
### Cycle 4, Diffs

Entries: 1467	Entries: 3654	Entries: 619
Mean: -0.0075 +/- 0.0076	Mean: 0.0690 +/- 0.0054	Mean: -0.0017 +/- 0.0124
Std Dev: 0.2908 +/- 0.0054	Std Dev: 0.3250 +/- 0.0038	Std Dev: 0.3090 +/- 0.0088



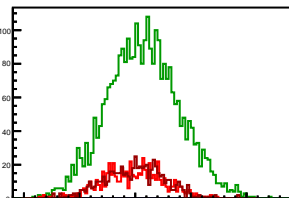
### Cycle 5, Diffs

Entries: 609	Entries: 3674	Entries: 608
Mean: 0.0116 +/- 0.0116	Mean: 0.0710 +/- 0.0054	Mean: -0.0033 +/- 0.0112
Std Dev: 0.2859 +/- 0.0082	Std Dev: 0.3292 +/- 0.0038	Std Dev: 0.2751 +/- 0.0079



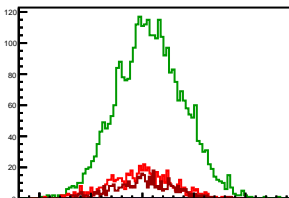
### Cycle 6, Diffs

Entries: 606	Entries: 3073	Entries: 613
Mean: -0.0144 +/- 0.0111	Mean: 0.0698 +/- 0.0058	Mean: -0.0062 +/- 0.0109
Std Dev: 0.2731 +/- 0.0078	Std Dev: 0.3232 +/- 0.0041	Std Dev: 0.2706 +/- 0.0077



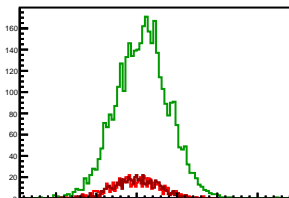
### Cycle 7, Diffs

Entries: 608	Entries: 3299	Entries: 429
Mean: -0.0224 +/- 0.0122	Mean: 0.0754 +/- 0.0056	Mean: 0.0014 +/- 0.0136
Std Dev: 0.3014 +/- 0.0086	Std Dev: 0.3218 +/- 0.0040	Std Dev: 0.2821 +/- 0.0096



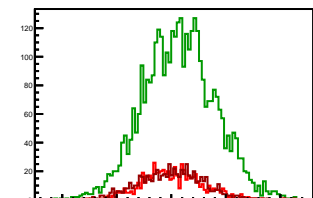
### Cycle 8, Diffs

Entries: 646	Entries: 3667	Entries: 639
Mean: -0.0035 +/- 0.0115	Mean: 0.0693 +/- 0.0054	Mean: -0.0039 +/- 0.0108
Std Dev: 0.2914 +/- 0.0081	Std Dev: 0.3265 +/- 0.0038	Std Dev: 0.2721 +/- 0.0076



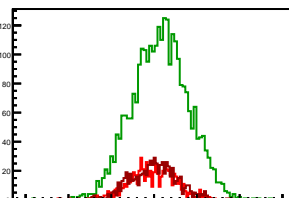
### Cycle 9, Diffs

Entries: 637	Entries: 3755	Entries: 655
Mean: 0.0078 +/- 0.0108	Mean: 0.0736 +/- 0.0053	Mean: -0.0006 +/- 0.0115
Std Dev: 0.2735 +/- 0.0077	Std Dev: 0.3266 +/- 0.0038	Std Dev: 0.2944 +/- 0.0081



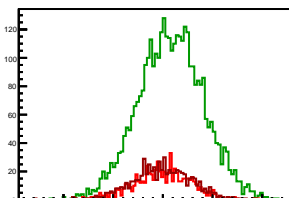
### Cycle 10, Diffs

Entries: 648	Entries: 2911	Entries: 679
Mean: -0.0205 +/- 0.0107	Mean: 0.0727 +/- 0.0061	Mean: -0.0017 +/- 0.0105
Std Dev: 0.2723 +/- 0.0076	Std Dev: 0.3268 +/- 0.0043	Std Dev: 0.2737 +/- 0.0074



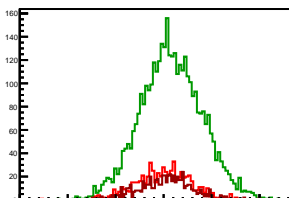
### Cycle 11, Diffs

Entries: 663	Entries: 3673	Entries: 656
Mean: -0.0112 +/- 0.0111	Mean: 0.0796 +/- 0.0054	Mean: -0.0113 +/- 0.0116
Std Dev: 0.2859 +/- 0.0078	Std Dev: 0.3281 +/- 0.0038	Std Dev: 0.2959 +/- 0.0082



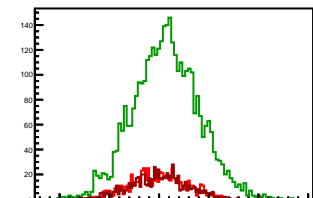
### Cycle 12, Diffs

Entries: 655	Entries: 3785	Entries: 645
Mean: 0.0000 +/- 0.0112	Mean: 0.0773 +/- 0.0052	Mean: 0.0187 +/- 0.0109
Std Dev: 0.2869 +/- 0.0079	Std Dev: 0.3209 +/- 0.0037	Std Dev: 0.2763 +/- 0.0077



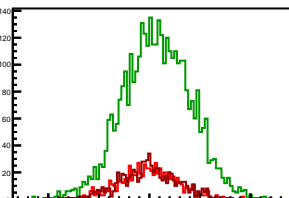
### Cycle 13, Diffs

Entries: 687	Entries: 3717	Entries: 723
Mean: -0.0029 +/- 0.0108	Mean: 0.0703 +/- 0.0054	Mean: -0.0079 +/- 0.0104
Std Dev: 0.2827 +/- 0.0076	Std Dev: 0.3292 +/- 0.0038	Std Dev: 0.2796 +/- 0.0074



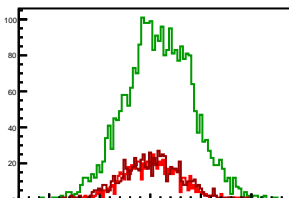
### Cycle 14, Diffs

Entries: 716	Entries: 3776	Entries: 737
Mean: -0.0041 +/- 0.0108	Mean: 0.0748 +/- 0.0054	Mean: -0.0102 +/- 0.0106
Std Dev: 0.2895 +/- 0.0076	Std Dev: 0.3315 +/- 0.0038	Std Dev: 0.2886 +/- 0.0075



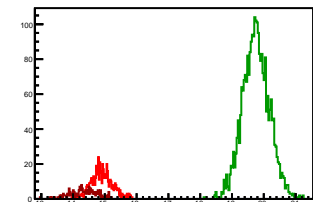
### Cycle 15, Diffs

Entries: 731	Entries: 2879	Entries: 756
Mean: 0.0145 +/- 0.0099	Mean: 0.0841 +/- 0.0061	Mean: 0.0130 +/- 0.0106
Std Dev: 0.2678 +/- 0.0070	Std Dev: 0.3295 +/- 0.0043	Std Dev: 0.2920 +/- 0.0075



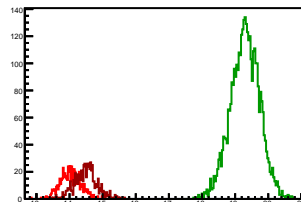
## Cycle 1, Sums

Entries: 588	Entries: 2631	Entries: 196
Mean: 14.9048 +/- 0.0138	Mean: 19.7521 +/- 0.0082	Mean: 14.3039 +/- 0.0300
Std Dev: 0.3357 +/- 0.0098	Std Dev: 0.4212 +/- 0.0058	Std Dev: 0.4207 +/- 0.0212



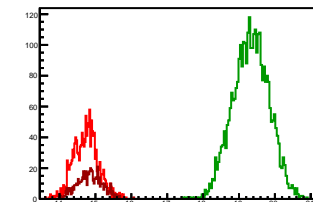
## Cycle 2, Sums

Entries: 603	Entries: 3701	Entries: 686
Mean: 14.0295 +/- 0.0129	Mean: 19.2984 +/- 0.0072	Mean: 14.4985 +/- 0.0130
Std Dev: 0.3172 +/- 0.0091	Std Dev: 0.4365 +/- 0.0051	Std Dev: 0.3393 +/- 0.0092



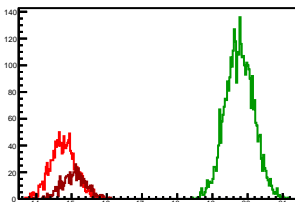
## Cycle 3, Sums

Entries: 1443	Entries: 3317	Entries: 576
Mean: 14.7411 +/- 0.0091	Mean: 19.3297 +/- 0.0087	Mean: 14.8394 +/- 0.0142
Std Dev: 0.3468 +/- 0.0065	Std Dev: 0.4992 +/- 0.0061	Std Dev: 0.3417 +/- 0.0101



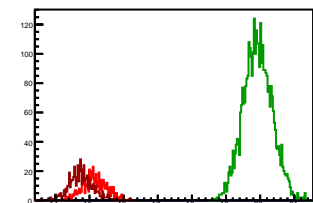
## Cycle 4, Sums

Entries: 1467	Entries: 3654	Entries: 619
Mean: 14.7652 +/- 0.0095	Mean: 19.7694 +/- 0.0066	Mean: 15.0710 +/- 0.0139
Std Dev: 0.3633 +/- 0.0067	Std Dev: 0.4002 +/- 0.0047	Std Dev: 0.3463 +/- 0.0098



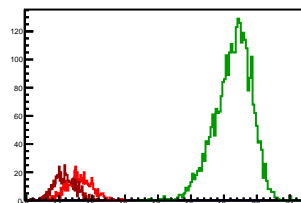
## Cycle 5, Sums

Entries: 609	Entries: 3674	Entries: 608
Mean: 15.1484 +/- 0.0141	Mean: 19.9269 +/- 0.0069	Mean: 14.7515 +/- 0.0139
Std Dev: 0.3471 +/- 0.0099	Std Dev: 0.4209 +/- 0.0049	Std Dev: 0.3430 +/- 0.0098



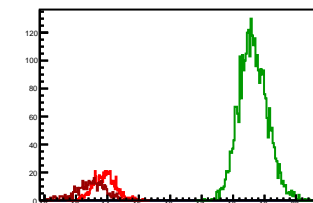
## Cycle 6, Sums

Entries: 606	Entries: 3073	Entries: 613
Mean: 14.6173 +/- 0.0153	Mean: 19.2770 +/- 0.0100	Mean: 14.1785 +/- 0.0133
Std Dev: 0.3760 +/- 0.0108	Std Dev: 0.5537 +/- 0.0071	Std Dev: 0.3293 +/- 0.0094



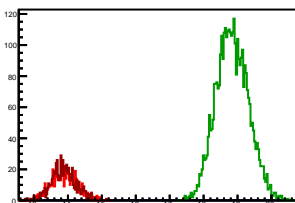
## Cycle 7, Sums

Entries: 608	Entries: 3299	Entries: 429
Mean: 13.9224 +/- 0.0143	Mean: 18.6392 +/- 0.0079	Mean: 13.4699 +/- 0.0225
Std Dev: 0.3524 +/- 0.0101	Std Dev: 0.4509 +/- 0.0056	Std Dev: 0.4659 +/- 0.0159



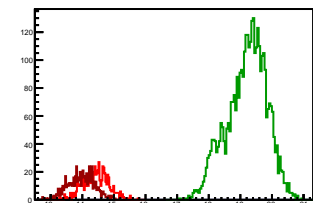
## Cycle 8, Sums

Entries: 646	Entries: 3667	Entries: 639
Mean: 13.8837 +/- 0.0155	Mean: 18.8426 +/- 0.0078	Mean: 13.8722 +/- 0.0140
Std Dev: 0.3935 +/- 0.0109	Std Dev: 0.4733 +/- 0.0055	Std Dev: 0.3534 +/- 0.0099



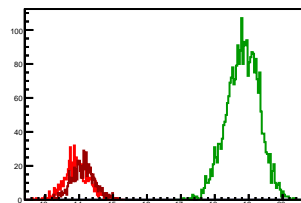
## Cycle 9, Sums

Entries: 637	Entries: 3755	Entries: 655
Mean: 14.4334 +/- 0.0164	Mean: 19.2028 +/- 0.0103	Mean: 13.9688 +/- 0.0166
Std Dev: 0.4130 +/- 0.0116	Std Dev: 0.6287 +/- 0.0073	Std Dev: 0.4247 +/- 0.0117



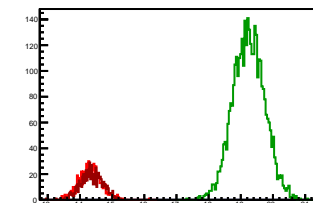
## Cycle 10, Sums

Entries: 648	Entries: 2911	Entries: 679
Mean: 13.9263 +/- 0.0142	Mean: 18.8262 +/- 0.0089	Mean: 14.1190 +/- 0.0132
Std Dev: 0.3618 +/- 0.0100	Std Dev: 0.4785 +/- 0.0063	Std Dev: 0.3443 +/- 0.0093



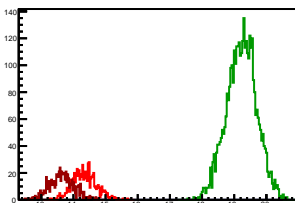
## Cycle 11, Sums

Entries: 663	Entries: 3673	Entries: 656
Mean: 14.3172 +/- 0.0133	Mean: 19.2458 +/- 0.0081	Mean: 14.3663 +/- 0.0134
Std Dev: 0.3435 +/- 0.0094	Std Dev: 0.4937 +/- 0.0058	Std Dev: 0.3431 +/- 0.0095



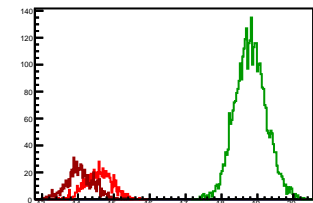
## Cycle 12, Sums

Entries: 655	Entries: 3785	Entries: 645
Mean: 14.3485 +/- 0.0145	Mean: 19.2303 +/- 0.0076	Mean: 13.6355 +/- 0.0152
Std Dev: 0.3722 +/- 0.0103	Std Dev: 0.4672 +/- 0.0054	Std Dev: 0.3850 +/- 0.0107



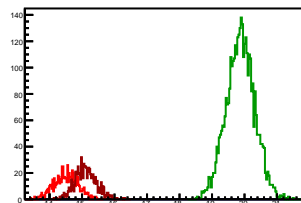
## Cycle 13, Sums

Entries: 687	Entries: 3717	Entries: 723
Mean: 14.5810 +/- 0.0142	Mean: 18.8102 +/- 0.0071	Mean: 14.0636 +/- 0.0141
Std Dev: 0.3714 +/- 0.0100	Std Dev: 0.4345 +/- 0.0050	Std Dev: 0.3800 +/- 0.0100



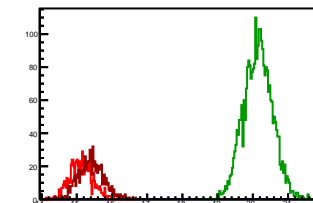
## Cycle 14, Sums

Entries: 716	Entries: 3776	Entries: 737
Mean: 14.5060 +/- 0.0135	Mean: 19.8752 +/- 0.0071	Mean: 15.1162 +/- 0.0123
Std Dev: 0.3610 +/- 0.0095	Std Dev: 0.4377 +/- 0.0050	Std Dev: 0.3345 +/- 0.0087



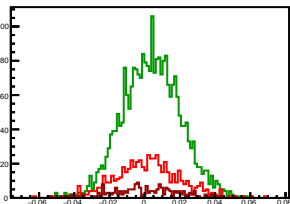
## Cycle 15, Sums

Entries: 731	Entries: 2879	Entries: 756
Mean: 15.1250 +/- 0.0120	Mean: 20.1490 +/- 0.0076	Mean: 15.4157 +/- 0.0127
Std Dev: 0.3238 +/- 0.0085	Std Dev: 0.4062 +/- 0.0054	Std Dev: 0.3504 +/- 0.0090



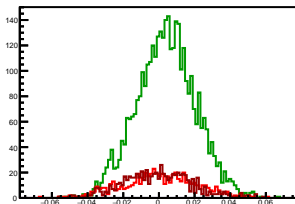
## Cycle 1, Asyms

Entries: 588	Entries: 2631	Entries: 196
Mean: 0.0017 +/- 0.0008	Mean: 0.0039 +/- 0.0003	Mean: 0.0007 +/- 0.0014
Std Dev: 0.0185 +/- 0.0005	Std Dev: 0.0163 +/- 0.0002	Std Dev: 0.0191 +/- 0.0010



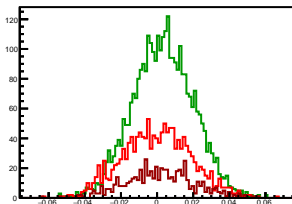
## Cycle 2, Asyms

Entries: 603	Entries: 3701	Entries: 686
Mean: 0.0003 +/- 0.0008	Mean: 0.0039 +/- 0.0003	Mean: -0.0007 +/- 0.0007
Std Dev: 0.0206 +/- 0.0006	Std Dev: 0.0166 +/- 0.0002	Std Dev: 0.0192 +/- 0.0005



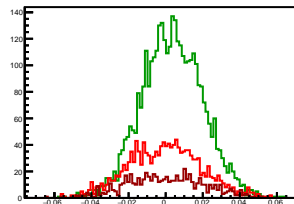
## Cycle 3, Asyms

Entries: 1443	Entries: 3317	Entries: 576
Mean: -0.0001 +/- 0.0005	Mean: 0.0032 +/- 0.0003	Mean: 0.0015 +/- 0.0008
Std Dev: 0.0190 +/- 0.0004	Std Dev: 0.0168 +/- 0.0002	Std Dev: 0.0190 +/- 0.0006



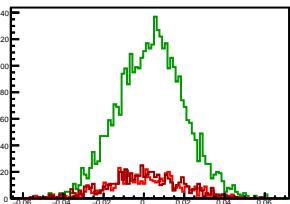
## Cycle 4, Asyms

Entries: 1467	Entries: 3654	Entries: 619
Mean: -0.0005 +/- 0.0005	Mean: 0.0035 +/- 0.0003	Mean: -0.0001 +/- 0.0008
Std Dev: 0.0196 +/- 0.0004	Std Dev: 0.0164 +/- 0.0002	Std Dev: 0.0204 +/- 0.0006



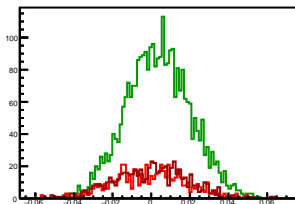
## Cycle 5, Asyms

Entries: 609	Entries: 3674	Entries: 608
Mean: 0.0008 +/- 0.0008	Mean: 0.0036 +/- 0.0003	Mean: -0.0002 +/- 0.0008
Std Dev: 0.0188 +/- 0.0005	Std Dev: 0.0165 +/- 0.0002	Std Dev: 0.0186 +/- 0.0005



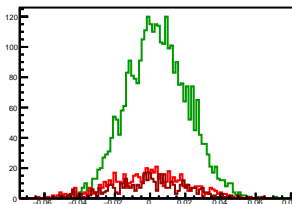
## Cycle 6, Asyms

Entries: 606	Entries: 3073	Entries: 613
Mean: -0.0010 +/- 0.0008	Mean: 0.0036 +/- 0.0003	Mean: -0.0004 +/- 0.0008
Std Dev: 0.0186 +/- 0.0005	Std Dev: 0.0168 +/- 0.0002	Std Dev: 0.0191 +/- 0.0005



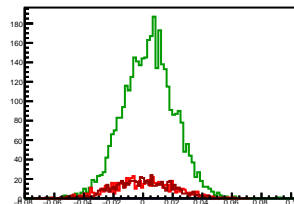
## Cycle 7, Asyms

Entries: 608	Entries: 3299	Entries: 429
Mean: -0.0016 +/- 0.0009	Mean: 0.0041 +/- 0.0003	Mean: 0.0001 +/- 0.0010
Std Dev: 0.0216 +/- 0.0006	Std Dev: 0.0173 +/- 0.0002	Std Dev: 0.0209 +/- 0.0007



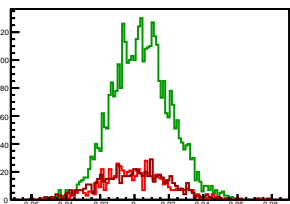
## Cycle 8, Asyms

Entries: 646	Entries: 3667	Entries: 639
Mean: -0.0003 +/- 0.0008	Mean: 0.0037 +/- 0.0003	Mean: -0.0003 +/- 0.0008
Std Dev: 0.0209 +/- 0.0006	Std Dev: 0.0173 +/- 0.0002	Std Dev: 0.0196 +/- 0.0005



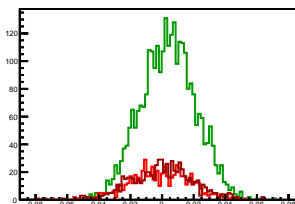
## Cycle 9, Asyms

Entries: 637	Entries: 3755	Entries: 655
Mean: 0.0005 +/- 0.0008	Mean: 0.0038 +/- 0.0003	Mean: -0.0000 +/- 0.0008
Std Dev: 0.0190 +/- 0.0005	Std Dev: 0.0170 +/- 0.0002	Std Dev: 0.0210 +/- 0.0006



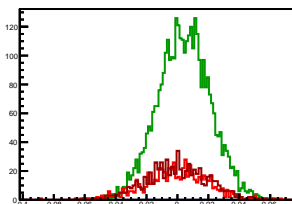
## Cycle 10, Asyms

Entries: 648	Entries: 2911	Entries: 679
Mean: -0.0015 +/- 0.0008	Mean: 0.0039 +/- 0.0003	Mean: -0.0001 +/- 0.0007
Std Dev: 0.0195 +/- 0.0005	Std Dev: 0.0173 +/- 0.0002	Std Dev: 0.0194 +/- 0.0005



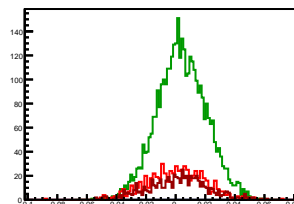
## Cycle 11, Asyms

Entries: 663	Entries: 3673	Entries: 656
Mean: -0.0008 +/- 0.0008	Mean: 0.0041 +/- 0.0003	Mean: -0.0008 +/- 0.0008
Std Dev: 0.0200 +/- 0.0005	Std Dev: 0.0170 +/- 0.0002	Std Dev: 0.0206 +/- 0.0006



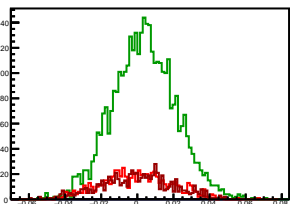
## Cycle 12, Asyms

Entries: 655	Entries: 3785	Entries: 645
Mean: 0.0000 +/- 0.0008	Mean: 0.0040 +/- 0.0003	Mean: 0.0013 +/- 0.0008
Std Dev: 0.0200 +/- 0.0006	Std Dev: 0.0167 +/- 0.0002	Std Dev: 0.0202 +/- 0.0006



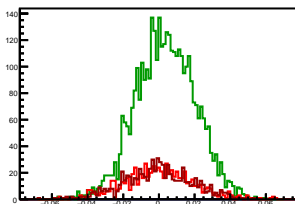
## Cycle 13, Asyms

Entries: 687	Entries: 3717	Entries: 723
Mean: -0.0002 +/- 0.0007	Mean: 0.0037 +/- 0.0003	Mean: -0.0006 +/- 0.0007
Std Dev: 0.0193 +/- 0.0005	Std Dev: 0.0175 +/- 0.0002	Std Dev: 0.0199 +/- 0.0005



## Cycle 14, Asyms

Entries: 716	Entries: 3776	Entries: 737
Mean: -0.0003 +/- 0.0007	Mean: 0.0038 +/- 0.0003	Mean: -0.0007 +/- 0.0007
Std Dev: 0.0199 +/- 0.0005	Std Dev: 0.0167 +/- 0.0002	Std Dev: 0.0190 +/- 0.0005



## Cycle 15, Asyms

Entries: 731	Entries: 2879	Entries: 756
Mean: 0.0010 +/- 0.0007	Mean: 0.0042 +/- 0.0003	Mean: 0.0008 +/- 0.0007
Std Dev: 0.0177 +/- 0.0005	Std Dev: 0.0163 +/- 0.0002	Std Dev: 0.0189 +/- 0.0005

