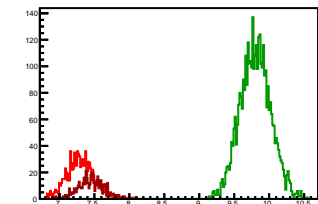


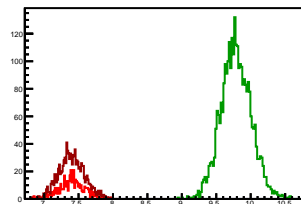
### Cycle 1, PosHel

Entries: 992	Entries: 3760	Entries: 475
Mean: 7.2973 +/- 0.0061	Mean: 9.8039 +/- 0.0036	Mean: 7.4553 +/- 0.0085
Std Dev: 0.1933 +/- 0.0043	Std Dev: 0.2198 +/- 0.0025	Std Dev: 0.1850 +/- 0.0060



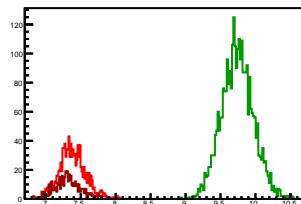
### Cycle 2, PosHel

Entries: 452	Entries: 3036	Entries: 1097
Mean: 7.3972 +/- 0.0090	Mean: 9.7871 +/- 0.0040	Mean: 7.4026 +/- 0.0056
Std Dev: 0.1922 +/- 0.0064	Std Dev: 0.2200 +/- 0.0028	Std Dev: 0.1861 +/- 0.0040



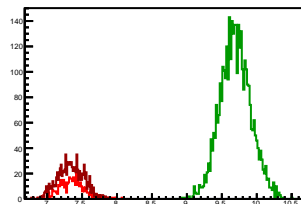
### Cycle 3, PosHel

Entries: 1071	Entries: 3063	Entries: 483
Mean: 7.3850 +/- 0.0057	Mean: 9.7436 +/- 0.0041	Mean: 7.3164 +/- 0.0082
Std Dev: 0.1881 +/- 0.0041	Std Dev: 0.2283 +/- 0.0029	Std Dev: 0.1798 +/- 0.0058



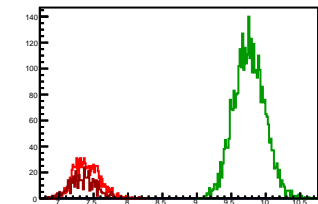
### Cycle 4, PosHel

Entries: 460	Entries: 3743	Entries: 983
Mean: 7.3652 +/- 0.0087	Mean: 9.6943 +/- 0.0036	Mean: 7.3420 +/- 0.0059
Std Dev: 0.1857 +/- 0.0061	Std Dev: 0.2192 +/- 0.0025	Std Dev: 0.1859 +/- 0.0042



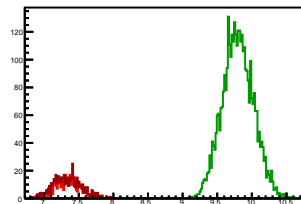
### Cycle 5, PosHel

Entries: 979	Entries: 3705	Entries: 478
Mean: 7.3985 +/- 0.0060	Mean: 9.7598 +/- 0.0037	Mean: 7.3470 +/- 0.0087
Std Dev: 0.1871 +/- 0.0042	Std Dev: 0.2223 +/- 0.0026	Std Dev: 0.1900 +/- 0.0061



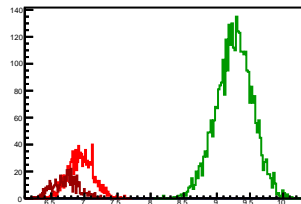
### Cycle 6, PosHel

Entries: 463	Entries: 3763	Entries: 564
Mean: 7.3523 +/- 0.0085	Mean: 9.7989 +/- 0.0037	Mean: 7.3278 +/- 0.0081
Std Dev: 0.1828 +/- 0.0060	Std Dev: 0.2242 +/- 0.0026	Std Dev: 0.1917 +/- 0.0057



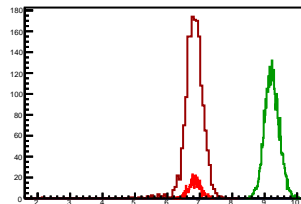
### Cycle 7, PosHel

Entries: 1035	Entries: 3643	Entries: 577
Mean: 6.9475 +/- 0.0060	Mean: 9.2622 +/- 0.0045	Mean: 6.7164 +/- 0.0082
Std Dev: 0.1915 +/- 0.0042	Std Dev: 0.2743 +/- 0.0032	Std Dev: 0.1962 +/- 0.0058



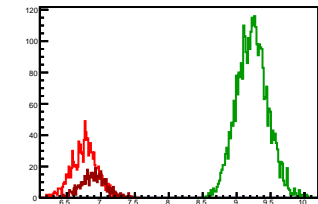
### Cycle 8, PosHel

Entries: 577	Entries: 3755	Entries: 1651
Mean: 6.8477 +/- 0.0078	Mean: 9.2258 +/- 0.0037	Mean: 6.8198 +/- 0.0075
Std Dev: 0.1864 +/- 0.0055	Std Dev: 0.2254 +/- 0.0026	Std Dev: 0.3061 +/- 0.0053



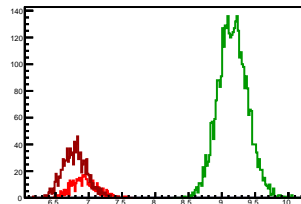
### Cycle 9, PosHel

Entries: 1178	Entries: 3412	Entries: 504
Mean: 6.7591 +/- 0.0055	Mean: 9.2292 +/- 0.0039	Mean: 6.8953 +/- 0.0085
Std Dev: 0.1897 +/- 0.0039	Std Dev: 0.2285 +/- 0.0028	Std Dev: 0.1917 +/- 0.0060



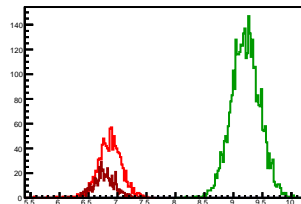
### Cycle 10, PosHel

Entries: 514	Entries: 3690	Entries: 1057
Mean: 6.9281 +/- 0.0084	Mean: 9.1643 +/- 0.0036	Mean: 6.7955 +/- 0.0057
Std Dev: 0.1896 +/- 0.0059	Std Dev: 0.2207 +/- 0.0026	Std Dev: 0.1845 +/- 0.0040



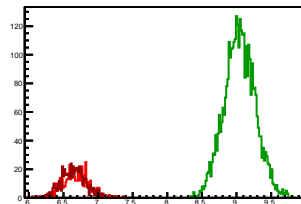
### Cycle 11, PosHel

Entries: 1044	Entries: 3653	Entries: 566
Mean: 6.8693 +/- 0.0065	Mean: 9.2078 +/- 0.0041	Mean: 6.7720 +/- 0.0079
Std Dev: 0.2090 +/- 0.0046	Std Dev: 0.2467 +/- 0.0029	Std Dev: 0.1882 +/- 0.0056



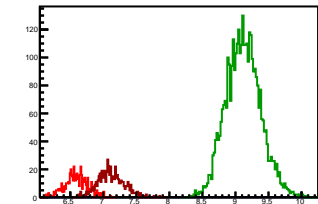
### Cycle 12, PosHel

Entries: 562	Entries: 3666	Entries: 562
Mean: 6.6820 +/- 0.0078	Mean: 9.0474 +/- 0.0037	Mean: 6.6448 +/- 0.0077
Std Dev: 0.1842 +/- 0.0055	Std Dev: 0.2249 +/- 0.0026	Std Dev: 0.1823 +/- 0.0054



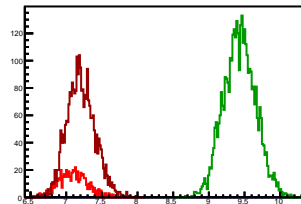
### Cycle 13, PosHel

Entries: 564	Entries: 3670	Entries: 589
Mean: 6.5889 +/- 0.0073	Mean: 9.1190 +/- 0.0043	Mean: 7.1177 +/- 0.0080
Std Dev: 0.1744 +/- 0.0052	Std Dev: 0.2629 +/- 0.0031	Std Dev: 0.1946 +/- 0.0057



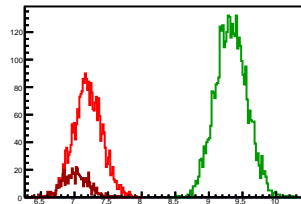
### Cycle 14, PosHel

Entries: 583	Entries: 3741	Entries: 2673
Mean: 7.0948 +/- 0.0084	Mean: 9.4308 +/- 0.0037	Mean: 7.2055 +/- 0.0038
Std Dev: 0.2029 +/- 0.0059	Std Dev: 0.2242 +/- 0.0026	Std Dev: 0.1961 +/- 0.0027



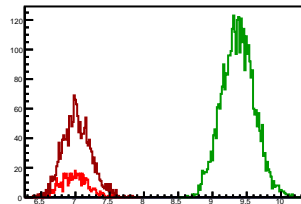
### Cycle 15, PosHel

Entries: 2579	Entries: 3766	Entries: 549
Mean: 7.2015 +/- 0.0041	Mean: 9.3315 +/- 0.0038	Mean: 7.0119 +/- 0.0083
Std Dev: 0.2074 +/- 0.0029	Std Dev: 0.2347 +/- 0.0027	Std Dev: 0.1954 +/- 0.0059



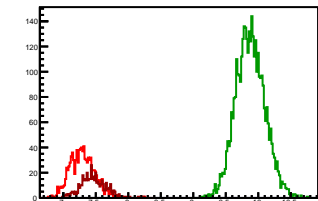
### Cycle 16, PosHel

Entries: 565	Entries: 3721	Entries: 1659
Mean: 6.8881 +/- 0.0081	Mean: 9.3738 +/- 0.0039	Mean: 7.0220 +/- 0.0051
Std Dev: 0.1933 +/- 0.0057	Std Dev: 0.2370 +/- 0.0027	Std Dev: 0.2063 +/- 0.0036



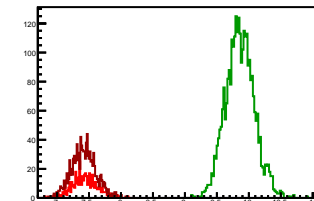
### Cycle 1, NegHel

Entries: 992	Entries: 3760	Entries: 475
Mean: 7.2927 +/- 0.0061	Mean: 9.8766 +/- 0.0036	Mean: 7.4582 +/- 0.0089
Std Dev: 0.1909 +/- 0.0043	Std Dev: 0.2232 +/- 0.0026	Std Dev: 0.1942 +/- 0.0063



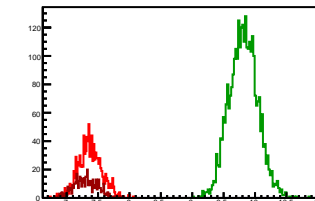
### Cycle 2, NegHel

Entries: 452	Entries: 3036	Entries: 1097
Mean: 7.4339 +/- 0.0093	Mean: 9.8621 +/- 0.0041	Mean: 7.4196 +/- 0.0057
Std Dev: 0.1977 +/- 0.0066	Std Dev: 0.2247 +/- 0.0029	Std Dev: 0.1902 +/- 0.0041



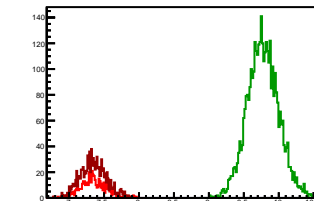
### Cycle 3, NegHel

Entries: 1071	Entries: 3063	Entries: 483
Mean: 7.3736 +/- 0.0058	Mean: 9.8153 +/- 0.0041	Mean: 7.3074 +/- 0.0087
Std Dev: 0.1889 +/- 0.0041	Std Dev: 0.2278 +/- 0.0029	Std Dev: 0.1907 +/- 0.0061



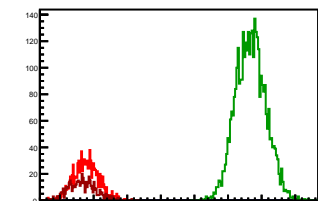
### Cycle 4, NegHel

Entries: 460	Entries: 3743	Entries: 983
Mean: 7.3441 +/- 0.0086	Mean: 9.7734 +/- 0.0037	Mean: 7.3446 +/- 0.0059
Std Dev: 0.1841 +/- 0.0061	Std Dev: 0.2248 +/- 0.0026	Std Dev: 0.1856 +/- 0.0042



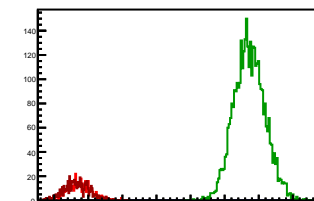
### Cycle 5, NegHel

Entries: 979	Entries: 3705	Entries: 478
Mean: 7.3869 +/- 0.0059	Mean: 9.8383 +/- 0.0037	Mean: 7.3311 +/- 0.0090
Std Dev: 0.1846 +/- 0.0042	Std Dev: 0.2227 +/- 0.0026	Std Dev: 0.1961 +/- 0.0063



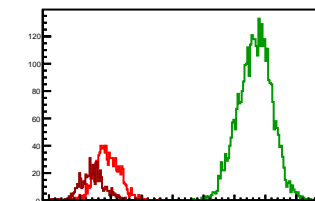
### Cycle 6, NegHel

Entries: 463	Entries: 3763	Entries: 564
Mean: 7.3726 +/- 0.0081	Mean: 9.8642 +/- 0.0037	Mean: 7.3318 +/- 0.0077
Std Dev: 0.1746 +/- 0.0057	Std Dev: 0.2262 +/- 0.0026	Std Dev: 0.1823 +/- 0.0054



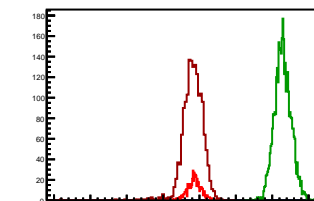
### Cycle 7, NegHel

Entries: 1035	Entries: 3643	Entries: 577
Mean: 6.9531 +/- 0.0060	Mean: 9.3322 +/- 0.0045	Mean: 6.7050 +/- 0.0080
Std Dev: 0.1941 +/- 0.0043	Std Dev: 0.2686 +/- 0.0031	Std Dev: 0.1912 +/- 0.0056



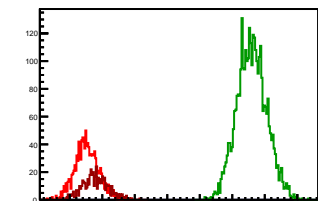
### Cycle 8, NegHel

Entries: 577	Entries: 3755	Entries: 1651
Mean: 6.8611 +/- 0.0080	Mean: 9.2930 +/- 0.0037	Mean: 6.8158 +/- 0.0072
Std Dev: 0.1934 +/- 0.0057	Std Dev: 0.2269 +/- 0.0026	Std Dev: 0.2912 +/- 0.0051



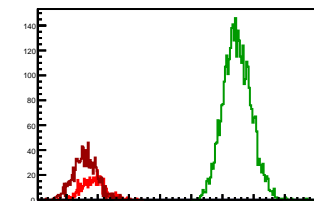
### Cycle 9, NegHel

Entries: 1178	Entries: 3412	Entries: 504
Mean: 6.7640 +/- 0.0054	Mean: 9.2998 +/- 0.0039	Mean: 6.8934 +/- 0.0089
Std Dev: 0.1838 +/- 0.0038	Std Dev: 0.2281 +/- 0.0026	Std Dev: 0.1994 +/- 0.0063



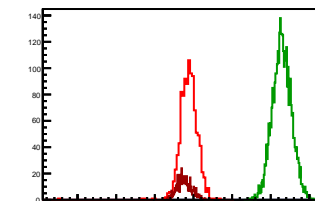
### Cycle 10, NegHel

Entries: 514	Entries: 3690	Entries: 1057
Mean: 6.9380 +/- 0.0082	Mean: 9.2365 +/- 0.0036	Mean: 6.7963 +/- 0.0059
Std Dev: 0.1869 +/- 0.0058	Std Dev: 0.2215 +/- 0.0026	Std Dev: 0.1920 +/- 0.0042



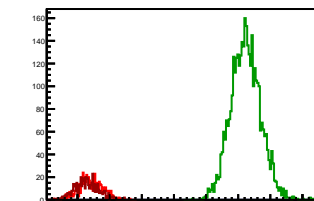
### Cycle 11, NegHel

Entries: 1044	Entries: 3653	Entries: 566
Mean: 6.8767 +/- 0.0074	Mean: 9.2893 +/- 0.0041	Mean: 6.7684 +/- 0.0080
Std Dev: 0.2396 +/- 0.0052	Std Dev: 0.2455 +/- 0.0029	Std Dev: 0.1899 +/- 0.0056



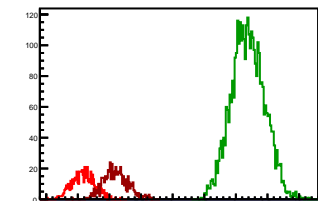
### Cycle 12, NegHel

Entries: 562	Entries: 3666	Entries: 562
Mean: 6.6945 +/- 0.0078	Mean: 9.1174 +/- 0.0038	Mean: 6.6458 +/- 0.0078
Std Dev: 0.1846 +/- 0.0055	Std Dev: 0.2308 +/- 0.0027	Std Dev: 0.1849 +/- 0.0055



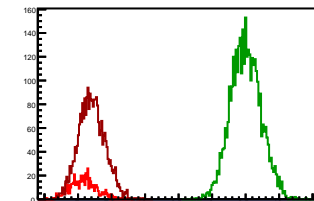
### Cycle 13, NegHel

Entries: 564	Entries: 3670	Entries: 589
Mean: 6.5911 +/- 0.0076	Mean: 9.1926 +/- 0.0043	Mean: 7.0997 +/- 0.0080
Std Dev: 0.1801 +/- 0.0054	Std Dev: 0.2626 +/- 0.0031	Std Dev: 0.1948 +/- 0.0057



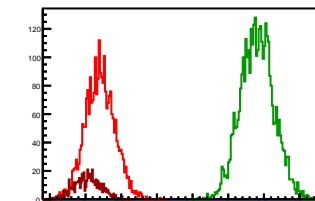
### Cycle 14, NegHel

Entries: 583	Entries: 3741	Entries: 2673
Mean: 7.0774 +/- 0.0082	Mean: 9.5013 +/- 0.0037	Mean: 7.2059 +/- 0.0038
Std Dev: 0.1984 +/- 0.0058	Std Dev: 0.2255 +/- 0.0026	Std Dev: 0.1980 +/- 0.0027



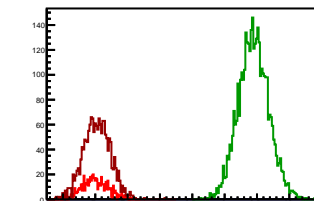
### Cycle 15, NegHel

Entries: 2579	Entries: 3766	Entries: 549
Mean: 7.2031 +/- 0.0041	Mean: 9.4052 +/- 0.0038	Mean: 7.0241 +/- 0.0079
Std Dev: 0.2050 +/- 0.0029	Std Dev: 0.2337 +/- 0.0027	Std Dev: 0.1850 +/- 0.0056



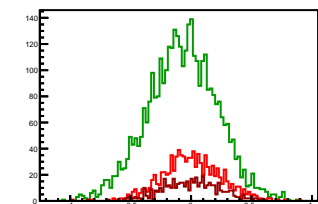
### Cycle 16, NegHel

Entries: 565	Entries: 3721	Entries: 1659
Mean: 6.9994 +/- 0.0085	Mean: 9.4463 +/- 0.0038	Mean: 7.0254 +/- 0.0051
Std Dev: 0.2025 +/- 0.0060	Std Dev: 0.2342 +/- 0.0027	Std Dev: 0.2069 +/- 0.0036



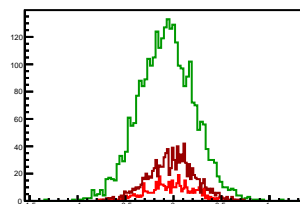
### Cycle 1, Diffs

Entries: 992	Entries: 3760	Entries: 475
Mean: 0.0046 +/- 0.0077	Mean: -0.0727 +/- 0.0047	Mean: -0.0029 +/- 0.0109
Std Dev: 0.2420 +/- 0.0054	Std Dev: 0.2866 +/- 0.0033	Std Dev: 0.2384 +/- 0.0077



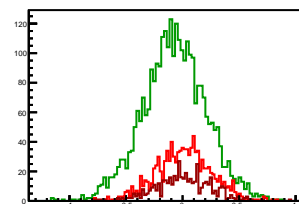
### Cycle 2, Diffs

Entries: 452	Entries: 3036	Entries: 1097
Mean: -0.0367 +/- 0.0116	Mean: -0.0749 +/- 0.0052	Mean: -0.0169 +/- 0.0073
Std Dev: 0.2469 +/- 0.0082	Std Dev: 0.2872 +/- 0.0037	Std Dev: 0.2424 +/- 0.0052



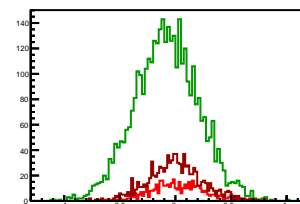
### Cycle 3, Diffs

Entries: 1071	Entries: 3063	Entries: 483
Mean: 0.0114 +/- 0.0075	Mean: -0.0717 +/- 0.0051	Mean: 0.0089 +/- 0.0112
Std Dev: 0.2463 +/- 0.0053	Std Dev: 0.2819 +/- 0.0036	Std Dev: 0.2453 +/- 0.0079



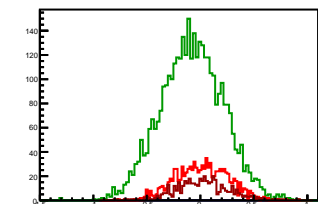
### Cycle 4, Diffs

Entries: 460	Entries: 3743	Entries: 983
Mean: 0.0211 +/- 0.0111	Mean: -0.0791 +/- 0.0047	Mean: -0.0026 +/- 0.0077
Std Dev: 0.2388 +/- 0.0079	Std Dev: 0.2883 +/- 0.0033	Std Dev: 0.2428 +/- 0.0055



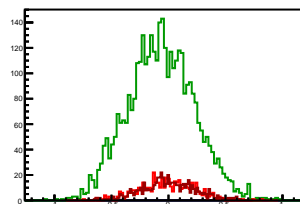
### Cycle 5, Diffs

Entries: 979	Entries: 3705	Entries: 478
Mean: 0.0116 +/- 0.0077	Mean: -0.0785 +/- 0.0048	Mean: 0.0159 +/- 0.0115
Std Dev: 0.2423 +/- 0.0055	Std Dev: 0.2920 +/- 0.0034	Std Dev: 0.2515 +/- 0.0081



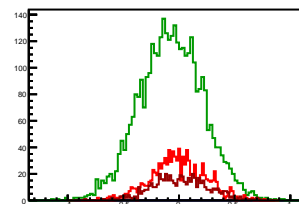
### Cycle 6, Diffs

Entries: 463	Entries: 3763	Entries: 564
Mean: -0.0203 +/- 0.0112	Mean: -0.0653 +/- 0.0047	Mean: -0.0041 +/- 0.0098
Std Dev: 0.2419 +/- 0.0079	Std Dev: 0.2908 +/- 0.0034	Std Dev: 0.2330 +/- 0.0069



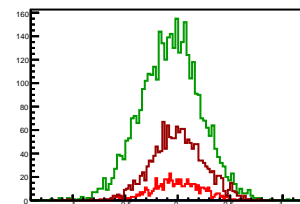
### Cycle 7, Diffs

Entries: 1035	Entries: 3643	Entries: 577
Mean: -0.0056 +/- 0.0075	Mean: -0.0699 +/- 0.0047	Mean: 0.0113 +/- 0.0104
Std Dev: 0.2415 +/- 0.0053	Std Dev: 0.2846 +/- 0.0033	Std Dev: 0.2498 +/- 0.0074



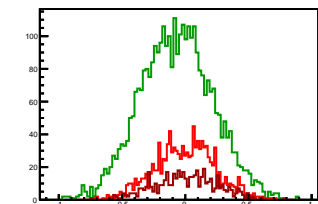
### Cycle 8, Diffs

Entries: 577	Entries: 3755	Entries: 1651
Mean: -0.0134 +/- 0.0098	Mean: -0.0671 +/- 0.0047	Mean: 0.0040 +/- 0.0060
Std Dev: 0.2363 +/- 0.0070	Std Dev: 0.2864 +/- 0.0033	Std Dev: 0.2458 +/- 0.0043



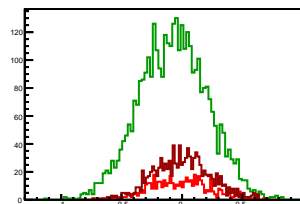
### Cycle 9, Diffs

Entries: 1178	Entries: 3412	Entries: 504
Mean: -0.0049 +/- 0.0069	Mean: -0.0706 +/- 0.0049	Mean: 0.0019 +/- 0.0110
Std Dev: 0.2373 +/- 0.0049	Std Dev: 0.2858 +/- 0.0033	Std Dev: 0.2462 +/- 0.0078



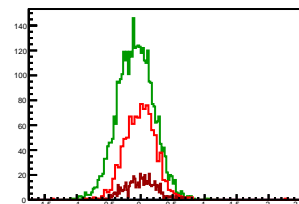
### Cycle 10, Diffs

Entries: 514	Entries: 3690	Entries: 1057
Mean: -0.0099 +/- 0.0109	Mean: -0.0722 +/- 0.0046	Mean: -0.0008 +/- 0.0073
Std Dev: 0.2468 +/- 0.0077	Std Dev: 0.2812 +/- 0.0033	Std Dev: 0.2387 +/- 0.0052



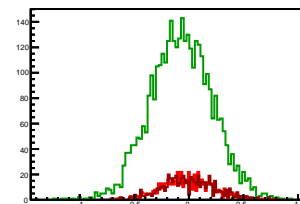
### Cycle 11, Diffs

Entries: 1044	Entries: 3653	Entries: 566
Mean: -0.0074 +/- 0.0079	Mean: -0.0815 +/- 0.0047	Mean: 0.0036 +/- 0.0103
Std Dev: 0.2547 +/- 0.0056	Std Dev: 0.2830 +/- 0.0033	Std Dev: 0.2457 +/- 0.0073



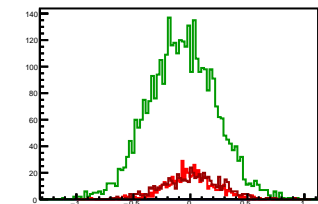
### Cycle 12, Diffs

Entries: 562	Entries: 3666	Entries: 562
Mean: -0.0125 +/- 0.0099	Mean: -0.0699 +/- 0.0047	Mean: -0.0009 +/- 0.0102
Std Dev: 0.2355 +/- 0.0070	Std Dev: 0.2842 +/- 0.0033	Std Dev: 0.2426 +/- 0.0072



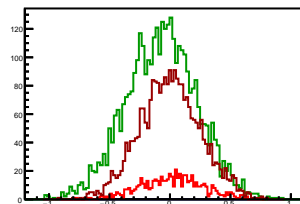
### Cycle 13, Diffs

Entries: 564	Entries: 3670	Entries: 589
Mean: -0.0022 +/- 0.0092	Mean: -0.0736 +/- 0.0049	Mean: 0.0180 +/- 0.0104
Std Dev: 0.2173 +/- 0.0065	Std Dev: 0.2938 +/- 0.0034	Std Dev: 0.2530 +/- 0.0074



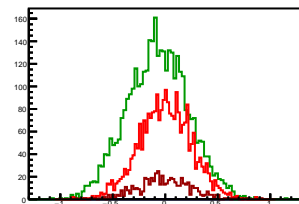
### Cycle 14, Diffs

Entries: 583	Entries: 3741	Entries: 2673
Mean: 0.0174 +/- 0.0107	Mean: -0.0705 +/- 0.0048	Mean: -0.0005 +/- 0.0049
Std Dev: 0.2573 +/- 0.0075	Std Dev: 0.2931 +/- 0.0034	Std Dev: 0.2528 +/- 0.0035



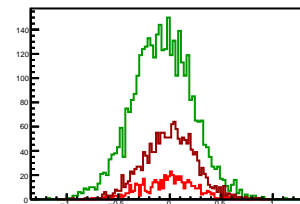
### Cycle 15, Diffs

Entries: 2579	Entries: 3766	Entries: 549
Mean: -0.0016 +/- 0.0049	Mean: -0.0738 +/- 0.0047	Mean: -0.0121 +/- 0.0110
Std Dev: 0.2478 +/- 0.0035	Std Dev: 0.2910 +/- 0.0034	Std Dev: 0.2584 +/- 0.0078



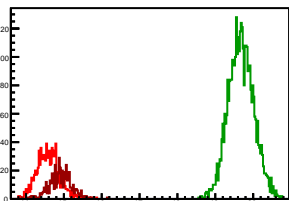
### Cycle 16, Diffs

Entries: 565	Entries: 3721	Entries: 1659
Mean: -0.0113 +/- 0.0110	Mean: -0.0725 +/- 0.0048	Mean: -0.0034 +/- 0.0061
Std Dev: 0.2603 +/- 0.0077	Std Dev: 0.2932 +/- 0.0034	Std Dev: 0.2503 +/- 0.0043



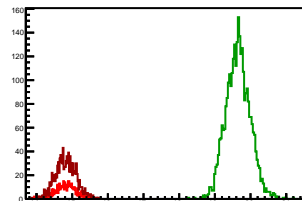
### Cycle 1, Sums

Entries: 992	Entries: 3760	Entries: 475
Mean: 14.5899 +/- 0.0095	Mean: 19.6804 +/- 0.0055	Mean: 14.9135 +/- 0.0135
Std Dev: 0.2984 +/- 0.0067	Std Dev: 0.3378 +/- 0.0039	Std Dev: 0.2950 +/- 0.0096



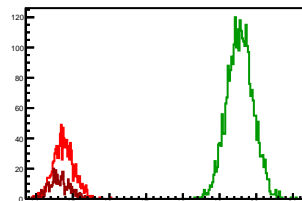
### Cycle 2, Sums

Entries: 452	Entries: 3036	Entries: 1097
Mean: 14.8311 +/- 0.0142	Mean: 19.6492 +/- 0.0062	Mean: 14.8222 +/- 0.0087
Std Dev: 0.3019 +/- 0.0100	Std Dev: 0.3396 +/- 0.0044	Std Dev: 0.2878 +/- 0.0061



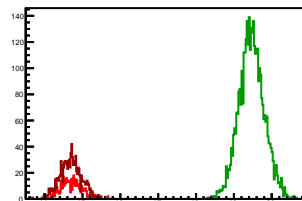
### Cycle 3, Sums

Entries: 1071	Entries: 3063	Entries: 483
Mean: 14.7585 +/- 0.0087	Mean: 19.5590 +/- 0.0065	Mean: 14.6238 +/- 0.0126
Std Dev: 0.2855 +/- 0.0062	Std Dev: 0.3585 +/- 0.0046	Std Dev: 0.2778 +/- 0.0089



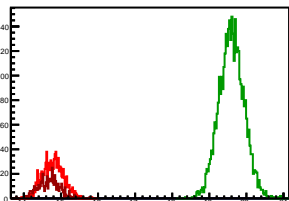
### Cycle 4, Sums

Entries: 460	Entries: 3743	Entries: 983
Mean: 14.7093 +/- 0.0132	Mean: 19.4678 +/- 0.0055	Mean: 14.6866 +/- 0.0090
Std Dev: 0.2824 +/- 0.0093	Std Dev: 0.3377 +/- 0.0039	Std Dev: 0.2813 +/- 0.0063



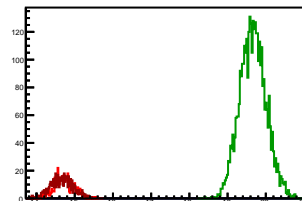
### Cycle 5, Sums

Entries: 979	Entries: 3705	Entries: 478
Mean: 14.7655 +/- 0.0090	Mean: 19.5981 +/- 0.0055	Mean: 14.6781 +/- 0.0134
Std Dev: 0.2820 +/- 0.0064	Std Dev: 0.3359 +/- 0.0039	Std Dev: 0.2930 +/- 0.0095



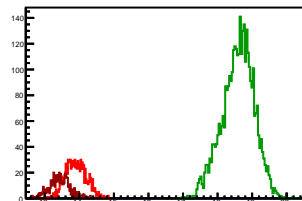
### Cycle 6, Sums

Entries: 463	Entries: 3763	Entries: 564
Mean: 14.7248 +/- 0.0122	Mean: 19.6632 +/- 0.0056	Mean: 14.6596 +/- 0.0123
Std Dev: 0.2632 +/- 0.0086	Std Dev: 0.3439 +/- 0.0040	Std Dev: 0.2927 +/- 0.0087



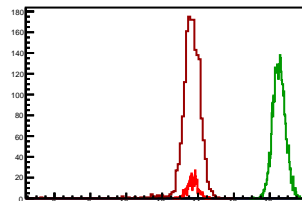
### Cycle 7, Sums

Entries: 1035	Entries: 3643	Entries: 577
Mean: 13.9006 +/- 0.0093	Mean: 18.5944 +/- 0.0077	Mean: 13.4214 +/- 0.0123
Std Dev: 0.3005 +/- 0.0066	Std Dev: 0.4623 +/- 0.0054	Std Dev: 0.2961 +/- 0.0087



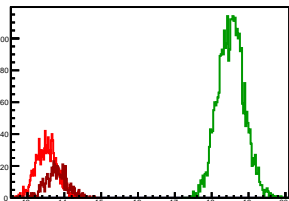
### Cycle 8, Sums

Entries: 577	Entries: 3755	Entries: 1651
Mean: 13.7088 +/- 0.0124	Mean: 18.5188 +/- 0.0057	Mean: 13.6356 +/- 0.0134
Std Dev: 0.2974 +/- 0.0088	Std Dev: 0.3500 +/- 0.0040	Std Dev: 0.5446 +/- 0.0095



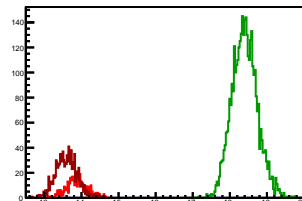
### Cycle 9, Sums

Entries: 1178	Entries: 3412	Entries: 504
Mean: 13.5231 +/- 0.0084	Mean: 18.5289 +/- 0.0061	Mean: 13.7887 +/- 0.0135
Std Dev: 0.2885 +/- 0.0059	Std Dev: 0.3561 +/- 0.0043	Std Dev: 0.3039 +/- 0.0096



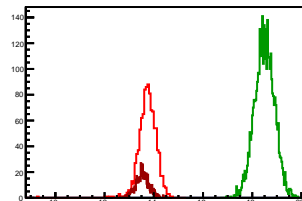
### Cycle 10, Sums

Entries: 514	Entries: 3690	Entries: 1057
Mean: 13.8662 +/- 0.0125	Mean: 18.4008 +/- 0.0056	Mean: 13.5918 +/- 0.0090
Std Dev: 0.2844 +/- 0.0089	Std Dev: 0.3414 +/- 0.0040	Std Dev: 0.2912 +/- 0.0063



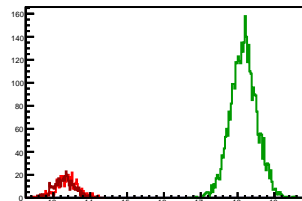
### Cycle 11, Sums

Entries: 1044	Entries: 3653	Entries: 566
Mean: 13.7460 +/- 0.0115	Mean: 18.4971 +/- 0.0067	Mean: 13.5404 +/- 0.0121
Std Dev: 0.3706 +/- 0.0081	Std Dev: 0.4027 +/- 0.0047	Std Dev: 0.2873 +/- 0.0085



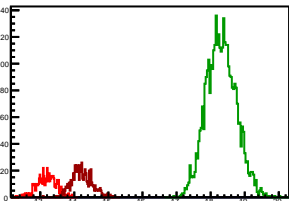
### Cycle 12, Sums

Entries: 562	Entries: 3666	Entries: 562
Mean: 13.3765 +/- 0.0120	Mean: 18.1648 +/- 0.0059	Mean: 13.2906 +/- 0.0116
Std Dev: 0.2838 +/- 0.0085	Std Dev: 0.3563 +/- 0.0042	Std Dev: 0.2756 +/- 0.0082



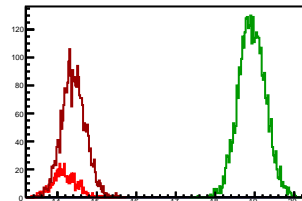
### Cycle 13, Sums

Entries: 564	Entries: 3670	Entries: 589
Mean: 13.1800 +/- 0.0118	Mean: 18.3117 +/- 0.0072	Mean: 14.2174 +/- 0.0122
Std Dev: 0.2801 +/- 0.0083	Std Dev: 0.4356 +/- 0.0051	Std Dev: 0.2960 +/- 0.0086



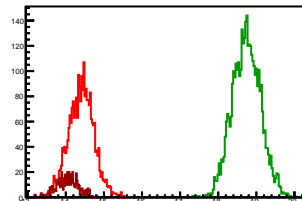
### Cycle 14, Sums

Entries: 583	Entries: 3741	Entries: 2673
Mean: 14.1722 +/- 0.0128	Mean: 18.9322 +/- 0.0056	Mean: 14.4114 +/- 0.0058
Std Dev: 0.3080 +/- 0.0090	Std Dev: 0.3411 +/- 0.0039	Std Dev: 0.3023 +/- 0.0041



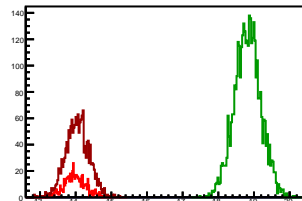
### Cycle 15, Sums

Entries: 2579	Entries: 3766	Entries: 549
Mean: 14.4046 +/- 0.0065	Mean: 18.7367 +/- 0.0060	Mean: 14.0360 +/- 0.0119
Std Dev: 0.3309 +/- 0.0046	Std Dev: 0.3671 +/- 0.0042	Std Dev: 0.2793 +/- 0.0084



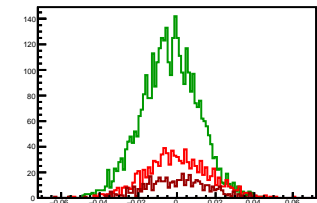
### Cycle 16, Sums

Entries: 565	Entries: 3721	Entries: 1659
Mean: 13.9875 +/- 0.0125	Mean: 18.8201 +/- 0.0060	Mean: 14.0474 +/- 0.0081
Std Dev: 0.2982 +/- 0.0089	Std Dev: 0.3689 +/- 0.0043	Std Dev: 0.3287 +/- 0.0057



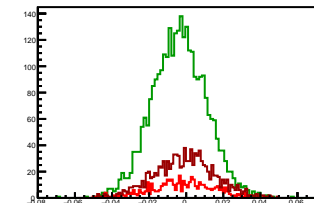
### Cycle 1, Asyms

Entries: 992	Entries: 3760	Entries: 475
Mean: 0.0003 +/- 0.0005	Mean: -0.0037 +/- 0.0002	Mean: -0.0002 +/- 0.0007
Std Dev: 0.0165 +/- 0.0004	Std Dev: 0.0145 +/- 0.0002	Std Dev: 0.0159 +/- 0.0005



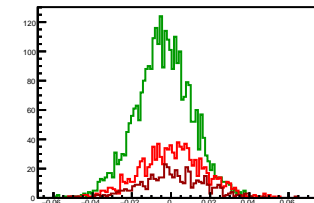
### Cycle 2, Asyms

Entries: 452	Entries: 3036	Entries: 1097
Mean: -0.0025 +/- 0.0008	Mean: -0.0038 +/- 0.0003	Mean: -0.0011 +/- 0.0005
Std Dev: 0.0166 +/- 0.0006	Std Dev: 0.0146 +/- 0.0002	Std Dev: 0.0163 +/- 0.0003



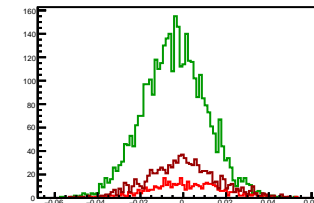
### Cycle 3, Asyms

Entries: 1071	Entries: 3063	Entries: 483
Mean: 0.0008 +/- 0.0005	Mean: -0.0037 +/- 0.0003	Mean: 0.0006 +/- 0.0008
Std Dev: 0.0166 +/- 0.0004	Std Dev: 0.0144 +/- 0.0002	Std Dev: 0.0168 +/- 0.0005



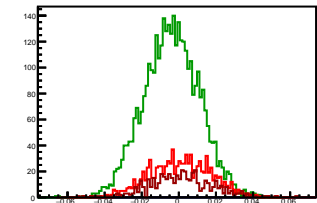
### Cycle 4, Asyms

Entries: 460	Entries: 3743	Entries: 983
Mean: 0.0014 +/- 0.0008	Mean: -0.0041 +/- 0.0002	Mean: -0.0002 +/- 0.0005
Std Dev: 0.0162 +/- 0.0005	Std Dev: 0.0148 +/- 0.0002	Std Dev: 0.0165 +/- 0.0004



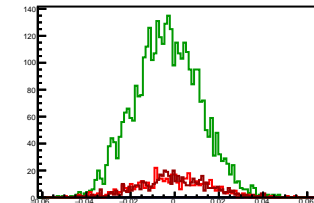
### Cycle 5, Asyms

Entries: 979	Entries: 3705	Entries: 478
Mean: 0.0008 +/- 0.0005	Mean: -0.0040 +/- 0.0002	Mean: 0.0011 +/- 0.0008
Std Dev: 0.0163 +/- 0.0004	Std Dev: 0.0149 +/- 0.0002	Std Dev: 0.0171 +/- 0.0006



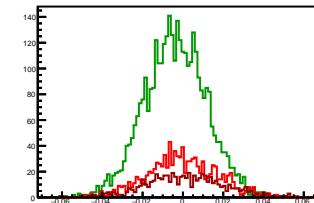
### Cycle 6, Asyms

Entries: 463	Entries: 3763	Entries: 564
Mean: -0.0014 +/- 0.0008	Mean: -0.0033 +/- 0.0002	Mean: -0.0003 +/- 0.0007
Std Dev: 0.0164 +/- 0.0005	Std Dev: 0.0148 +/- 0.0002	Std Dev: 0.0158 +/- 0.0005



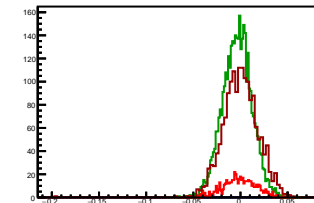
### Cycle 7, Asyms

Entries: 1035	Entries: 3643	Entries: 577
Mean: -0.0004 +/- 0.0005	Mean: -0.0038 +/- 0.0003	Mean: 0.0008 +/- 0.0008
Std Dev: 0.0173 +/- 0.0004	Std Dev: 0.0153 +/- 0.0002	Std Dev: 0.0186 +/- 0.0005



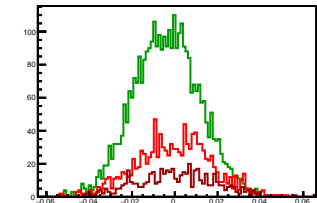
### Cycle 8, Asyms

Entries: 577	Entries: 3755	Entries: 1651
Mean: -0.0010 +/- 0.0007	Mean: -0.0036 +/- 0.0003	Mean: 0.0002 +/- 0.0005
Std Dev: 0.0172 +/- 0.0005	Std Dev: 0.0154 +/- 0.0002	Std Dev: 0.0186 +/- 0.0005



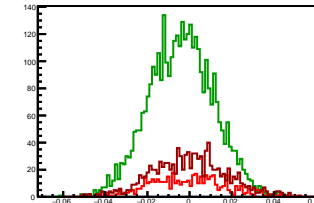
### Cycle 9, Asyms

Entries: 1178	Entries: 3412	Entries: 504
Mean: -0.0004 +/- 0.0005	Mean: -0.0038 +/- 0.0003	Mean: 0.0002 +/- 0.0008
Std Dev: 0.0176 +/- 0.0004	Std Dev: 0.0154 +/- 0.0002	Std Dev: 0.0178 +/- 0.0006



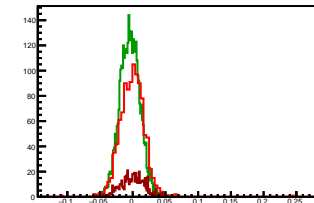
### Cycle 10, Asyms

Entries: 514	Entries: 3690	Entries: 1057
Mean: -0.0007 +/- 0.0008	Mean: -0.0039 +/- 0.0003	Mean: -0.0000 +/- 0.0005
Std Dev: 0.0177 +/- 0.0006	Std Dev: 0.0153 +/- 0.0002	Std Dev: 0.0175 +/- 0.0004



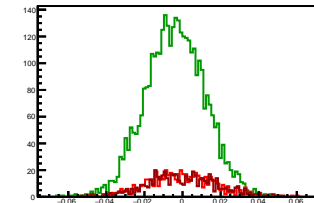
### Cycle 11, Asyms

Entries: 1044	Entries: 3653	Entries: 566
Mean: -0.0004 +/- 0.0006	Mean: -0.0044 +/- 0.0003	Mean: 0.0003 +/- 0.0008
Std Dev: 0.0194 +/- 0.0004	Std Dev: 0.0153 +/- 0.0002	Std Dev: 0.0181 +/- 0.0005



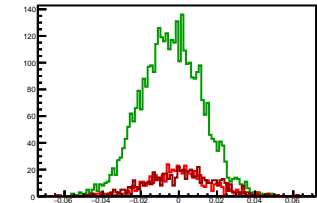
### Cycle 12, Asyms

Entries: 562	Entries: 3666	Entries: 562
Mean: -0.0009 +/- 0.0007	Mean: -0.0038 +/- 0.0003	Mean: -0.0001 +/- 0.0008
Std Dev: 0.0176 +/- 0.0005	Std Dev: 0.0156 +/- 0.0002	Std Dev: 0.0182 +/- 0.0005



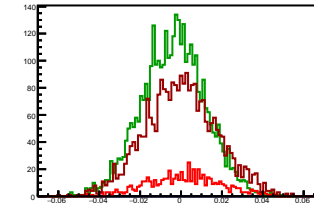
### Cycle 13, Asyms

Entries: 564	Entries: 3670	Entries: 589
Mean: -0.0002 +/- 0.0007	Mean: -0.0040 +/- 0.0003	Mean: 0.0013 +/- 0.0007
Std Dev: 0.0165 +/- 0.0005	Std Dev: 0.0160 +/- 0.0002	Std Dev: 0.0178 +/- 0.0005



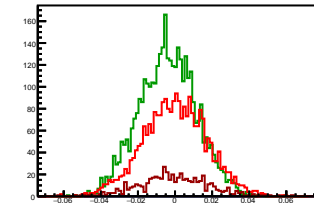
### Cycle 14, Asyms

Entries: 583	Entries: 3741	Entries: 2673
Mean: 0.0012 +/- 0.0008	Mean: -0.0037 +/- 0.0003	Mean: -0.0000 +/- 0.0003
Std Dev: 0.0181 +/- 0.0005	Std Dev: 0.0155 +/- 0.0002	Std Dev: 0.0175 +/- 0.0003



### Cycle 15, Asyms

Entries: 2579	Entries: 3766	Entries: 549
Mean: -0.0001 +/- 0.0003	Mean: -0.0039 +/- 0.0003	Mean: -0.0009 +/- 0.0008
Std Dev: 0.0172 +/- 0.0002	Std Dev: 0.0155 +/- 0.0002	Std Dev: 0.0184 +/- 0.0006



### Cycle 16, Asyms

Entries: 565	Entries: 3721	Entries: 1659
Mean: -0.0008 +/- 0.0008	Mean: -0.0039 +/- 0.0003	Mean: -0.0002 +/- 0.0004
Std Dev: 0.0186 +/- 0.0006	Std Dev: 0.0156 +/- 0.0002	Std Dev: 0.0178 +/- 0.0003

