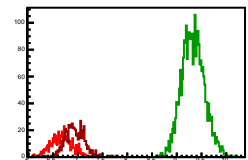
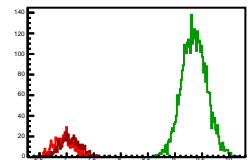


**Cycle 1, PosHel**

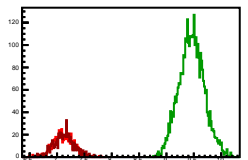
Entries: 592	Entries: 2741	Entries: 622
Mean: 6.699 ± 0.007	Mean: 9.3283 ± 0.0044	Mean: 6.9372 ± 0.0075
Std Dev: 0.2120 ± 0.0052	Std Dev: 0.2288 ± 0.0031	Std Dev: 0.1866 ± 0.0053

**Cycle 2, PosHel**

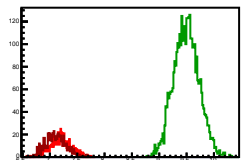
Entries: 610	Entries: 3793	Entries: 587
Mean: 6.5419 ± 0.0077	Mean: 9.3565 ± 0.0038	Mean: 7.0887 ± 0.0077
Std Dev: 0.1904 ± 0.0055	Std Dev: 0.2324 ± 0.0027	Std Dev: 0.1956 ± 0.0051

**Cycle 3, PosHel**

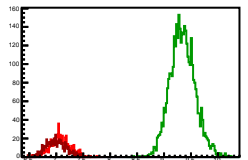
Entries: 591	Entries: 3665	Entries: 635
Mean: 7.1139 ± 0.0078	Mean: 9.4603 ± 0.0038	Mean: 7.1255 ± 0.0076
Std Dev: 0.1993 ± 0.0055	Std Dev: 0.2314 ± 0.0027	Std Dev: 0.1995 ± 0.0053

**Cycle 4, PosHel**

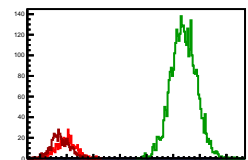
Entries: 622	Entries: 3761	Entries: 673
Mean: 7.2007 ± 0.0075	Mean: 9.4952 ± 0.0038	Mean: 7.1088 ± 0.0073
Std Dev: 0.1866 ± 0.0053	Std Dev: 0.2305 ± 0.0027	Std Dev: 0.1895 ± 0.0052

**Cycle 5, PosHel**

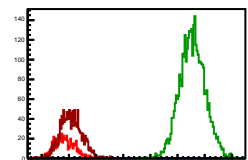
Entries: 650	Entries: 3749	Entries: 692
Mean: 7.0715 ± 0.0071	Mean: 9.3439 ± 0.0038	Mean: 6.9988 ± 0.0077
Std Dev: 0.1815 ± 0.0050	Std Dev: 0.2319 ± 0.0027	Std Dev: 0.1899 ± 0.0055

**Cycle 6, PosHel**

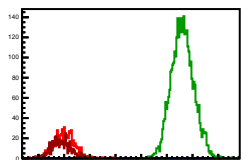
Entries: 600	Entries: 3713	Entries: 668
Mean: 6.8966 ± 0.0072	Mean: 9.1959 ± 0.0039	Mean: 6.8833 ± 0.0069
Std Dev: 0.1704 ± 0.0051	Std Dev: 0.2281 ± 0.0028	Std Dev: 0.1785 ± 0.0049

**Cycle 7, PosHel**

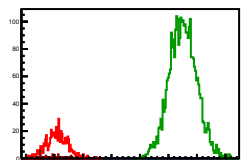
Entries: 643	Entries: 3644	Entries: 1416
Mean: 6.5222 ± 0.0076	Mean: 9.2738 ± 0.0039	Mean: 7.0384 ± 0.0052
Std Dev: 0.1918 ± 0.0053	Std Dev: 0.2235 ± 0.0027	Std Dev: 0.1950 ± 0.0051

**Cycle 8, PosHel**

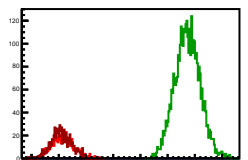
Entries: 645	Entries: 3647	Entries: 600
Mean: 7.0268 ± 0.0080	Mean: 9.3056 ± 0.0036	Mean: 6.9417 ± 0.0078
Std Dev: 0.2041 ± 0.0052	Std Dev: 0.2178 ± 0.0028	Std Dev: 0.1822 ± 0.0055

**Cycle 9, PosHel**

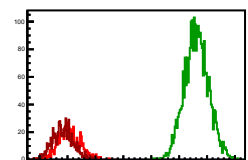
Entries: 599	Entries: 3252	Entries: 43
Mean: 7.0426 ± 0.0079	Mean: 9.2554 ± 0.0042	Mean: 6.9631 ± 0.0080
Std Dev: 0.1916 ± 0.0053	Std Dev: 0.2412 ± 0.0030	Std Dev: 0.1968 ± 0.0052

**Cycle 10, PosHel**

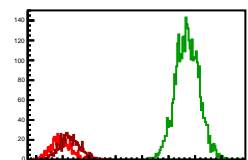
Entries: 639	Entries: 3736	Entries: 682
Mean: 7.0677 ± 0.0079	Mean: 9.3638 ± 0.0038	Mean: 7.0463 ± 0.0070
Std Dev: 0.1989 ± 0.0050	Std Dev: 0.2319 ± 0.0027	Std Dev: 0.1838 ± 0.0050

**Cycle 11, PosHel**

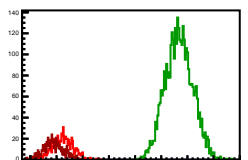
Entries: 603	Entries: 3678	Entries: 779
Mean: 7.0238 ± 0.0079	Mean: 9.3130 ± 0.0041	Mean: 6.9233 ± 0.0069
Std Dev: 0.2004 ± 0.0053	Std Dev: 0.2187 ± 0.0028	Std Dev: 0.1887 ± 0.0048

**Cycle 12, PosHel**

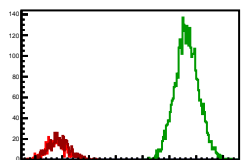
Entries: 730	Entries: 3673	Entries: 744
Mean: 6.9823 ± 0.0073	Mean: 9.3540 ± 0.0037	Mean: 7.1981 ± 0.0072
Std Dev: 0.1887 ± 0.0049	Std Dev: 0.2225 ± 0.0028	Std Dev: 0.1990 ± 0.0051

**Cycle 13, PosHel**

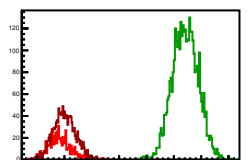
Entries: 760	Entries: 3783	Entries: 642
Mean: 7.1163 ± 0.0074	Mean: 9.3401 ± 0.0043	Mean: 6.9455 ± 0.0074
Std Dev: 0.1972 ± 0.0052	Std Dev: 0.2026 ± 0.0030	Std Dev: 0.1874 ± 0.0052

**Cycle 14, PosHel**

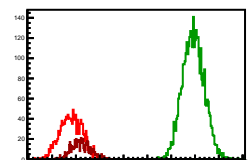
Entries: 639	Entries: 3689	Entries: 632
Mean: 6.9037 ± 0.0077	Mean: 9.3245 ± 0.0037	Mean: 6.9385 ± 0.0078
Std Dev: 0.1931 ± 0.0054	Std Dev: 0.2225 ± 0.0028	Std Dev: 0.1969 ± 0.0055

**Cycle 15, PosHel**

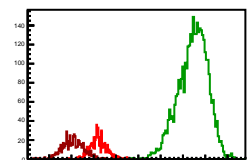
Entries: 628	Entries: 3712	Entries: 1492
Mean: 6.9094 ± 0.0083	Mean: 9.2093 ± 0.0039	Mean: 7.0023 ± 0.0083
Std Dev: 0.2081 ± 0.0059	Std Dev: 0.2360 ± 0.0028	Std Dev: 0.2014 ± 0.0037

**Cycle 16, PosHel**

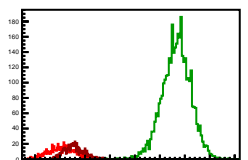
Entries: 1444	Entries: 3694	Entries: 642
Mean: 7.0750 ± 0.0072	Mean: 9.4899 ± 0.0037	Mean: 7.1123 ± 0.0077
Std Dev: 0.2329 ± 0.0043	Std Dev: 0.2268 ± 0.0028	Std Dev: 0.1944 ± 0.0054

**Cycle 17, PosHel**

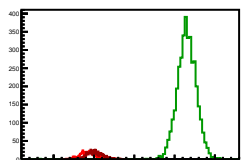
Entries: 630	Entries: 3756	Entries: 626
Mean: 6.9843 ± 0.0073	Mean: 9.2255 ± 0.0054	Mean: 6.9393 ± 0.0055
Std Dev: 0.1844 ± 0.0052	Std Dev: 0.2312 ± 0.0030	Std Dev: 0.2307 ± 0.0057

**Cycle 18, PosHel**

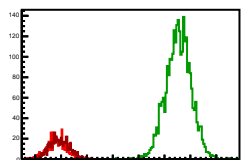
Entries: 621	Entries: 3724	Entries: 652
Mean: 6.5339 ± 0.0102	Mean: 9.8316 ± 0.0047	Mean: 6.7895 ± 0.0075
Std Dev: 0.2530 ± 0.0072	Std Dev: 0.2039 ± 0.0033	Std Dev: 0.1903 ± 0.0053

**Cycle 19, PosHel**

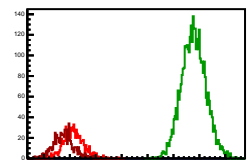
Entries: 640	Entries: 3736	Entries: 625
Mean: 6.8604 ± 0.0073	Mean: 9.3014 ± 0.0040	Mean: 7.0109 ± 0.0076
Std Dev: 0.1969 ± 0.0055	Std Dev: 0.2426 ± 0.0028	Std Dev: 0.1905 ± 0.0054

**Cycle 20, PosHel**

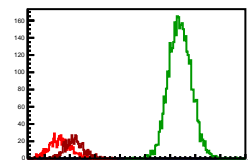
Entries: 628	Entries: 2878	Entries: 681
Mean: 6.9191 ± 0.0077	Mean: 9.5445 ± 0.0045	Mean: 6.9688 ± 0.0071
Std Dev: 0.1920 ± 0.0054	Std Dev: 0.2434 ± 0.0028	Std Dev: 0.1855 ± 0.0050

**Cycle 21, PosHel**

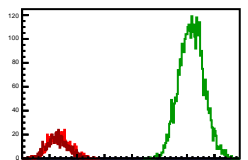
Entries: 741	Entries: 3706	Entries: 719
Mean: 7.0750 ± 0.0072	Mean: 9.3899 ± 0.0037	Mean: 6.8821 ± 0.0076
Std Dev: 0.1956 ± 0.0051	Std Dev: 0.2249 ± 0.0028	Std Dev: 0.2046 ± 0.0054

**Cycle 22, PosHel**

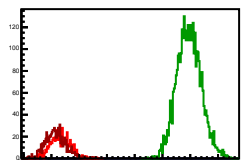
Entries: 697	Entries: 3778	Entries: 658
Mean: 6.9943 ± 0.0081	Mean: 9.1856 ± 0.0037	Mean: 7.0993 ± 0.0072
Std Dev: 0.2142 ± 0.0057	Std Dev: 0.2283 ± 0.0030	Std Dev: 0.1837 ± 0.0051

**Cycle 23, PosHel**

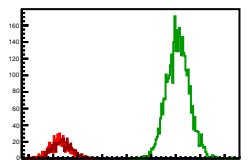
Entries: 652	Entries: 3664	Entries: 658
Mean: 7.1695 ± 0.0079	Mean: 9.8334 ± 0.0037	Mean: 7.1428 ± 0.0075
Std Dev: 0.2028 ± 0.0056	Std Dev: 0.2252 ± 0.0028	Std Dev: 0.1821 ± 0.0053

**Cycle 24, PosHel**

Entries: 652	Entries: 3725	Entries: 771
Mean: 7.1548 ± 0.0073	Mean: 9.4775 ± 0.0036	Mean: 7.0712 ± 0.0085
Std Dev: 0.1940 ± 0.0052	Std Dev: 0.2205 ± 0.0028	Std Dev: 0.1817 ± 0.0046

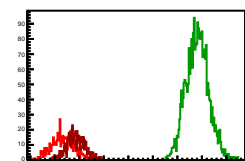
**Cycle 25, PosHel**

Entries: 727	Entries: 3681	Entries: 666
Mean: 7.1150 ± 0.0071	Mean: 9.5445 ± 0.0036	Mean: 7.1097 ± 0.0075
Std Dev: 0.1911 ± 0.0051	Std Dev: 0.2209 ± 0.0028	Std Dev: 0.1935 ± 0.0053

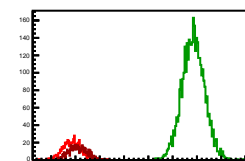


**Cycle 1, NegHel**

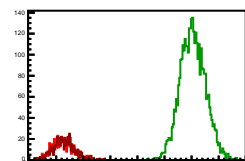
Entries: 592	Entries: 2741	Entries: 622
Mean: 6.691 ± 0.006	Mean: 9.4076 ± 0.0044	Mean: 6.9391 ± 0.0075
Std Dev: 0.2234 ± 0.0058	Std Dev: 0.2297 ± 0.0031	Std Dev: 0.1865 ± 0.0053

**Cycle 2, NegHel**

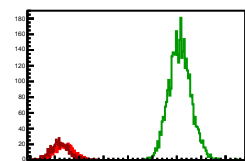
Entries: 610	Entries: 3793	Entries: 587
Mean: 6.5301 ± 0.0060	Mean: 9.4261 ± 0.0038	Mean: 7.9522 ± 0.0078
Std Dev: 0.1994 ± 0.0056	Std Dev: 0.2315 ± 0.0027	Std Dev: 0.1880 ± 0.0051

**Cycle 3, NegHel**

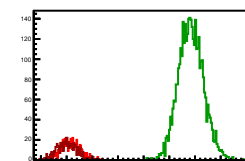
Entries: 591	Entries: 3665	Entries: 635
Mean: 7.1162 ± 0.0062	Mean: 9.5232 ± 0.0038	Mean: 7.1371 ± 0.0077
Std Dev: 0.1995 ± 0.0058	Std Dev: 0.2322 ± 0.0027	Std Dev: 0.1933 ± 0.0055

**Cycle 4, NegHel**

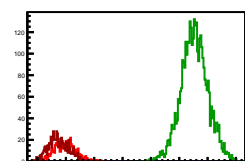
Entries: 622	Entries: 3761	Entries: 673
Mean: 7.1933 ± 0.0075	Mean: 9.5650 ± 0.0037	Mean: 7.1040 ± 0.0073
Std Dev: 0.1900 ± 0.0054	Std Dev: 0.2271 ± 0.0026	Std Dev: 0.1888 ± 0.0051

**Cycle 5, NegHel**

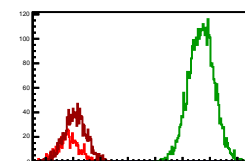
Entries: 650	Entries: 3749	Entries: 692
Mean: 7.0693 ± 0.0073	Mean: 9.4218 ± 0.0040	Mean: 7.9024 ± 0.0077
Std Dev: 0.1872 ± 0.0052	Std Dev: 0.2419 ± 0.0022	Std Dev: 0.1884 ± 0.0054

**Cycle 6, NegHel**

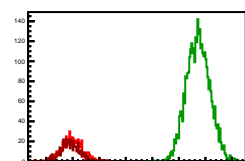
Entries: 600	Entries: 3713	Entries: 668
Mean: 6.9798 ± 0.0077	Mean: 9.2683 ± 0.0039	Mean: 6.8711 ± 0.0071
Std Dev: 0.1987 ± 0.0054	Std Dev: 0.2282 ± 0.0023	Std Dev: 0.1750 ± 0.0050

**Cycle 7, NegHel**

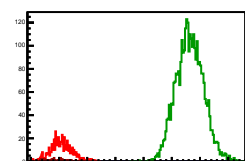
Entries: 643	Entries: 3644	Entries: 1416
Mean: 6.5202 ± 0.0077	Mean: 9.3439 ± 0.0039	Mean: 7.9387 ± 0.0052
Std Dev: 0.1954 ± 0.0054	Std Dev: 0.2226 ± 0.0027	Std Dev: 0.1837 ± 0.0037

**Cycle 8, NegHel**

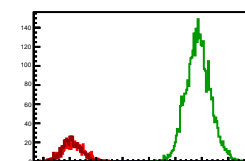
Entries: 645	Entries: 3647	Entries: 600
Mean: 7.0005 ± 0.0077	Mean: 9.3646 ± 0.0036	Mean: 6.9497 ± 0.0075
Std Dev: 0.1950 ± 0.0054	Std Dev: 0.2204 ± 0.0027	Std Dev: 0.1825 ± 0.0053

**Cycle 9, NegHel**

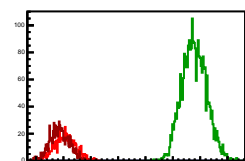
Entries: 599	Entries: 3252	Entries: 43
Mean: 7.0368 ± 0.0077	Mean: 9.3189 ± 0.0042	Mean: 6.9369 ± 0.0077
Std Dev: 0.1880 ± 0.0054	Std Dev: 0.2427 ± 0.0020	Std Dev: 0.1817 ± 0.0196

**Cycle 10, NegHel**

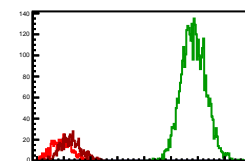
Entries: 639	Entries: 3736	Entries: 682
Mean: 7.0731 ± 0.0080	Mean: 9.4342 ± 0.0038	Mean: 7.9376 ± 0.0071
Std Dev: 0.2031 ± 0.0059	Std Dev: 0.2233 ± 0.0022	Std Dev: 0.1859 ± 0.0050

**Cycle 11, NegHel**

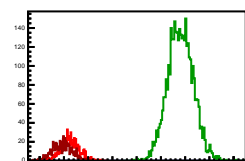
Entries: 663	Entries: 3706	Entries: 779
Mean: 7.0207 ± 0.0075	Mean: 9.3919 ± 0.0042	Mean: 6.8205 ± 0.0063
Std Dev: 0.1921 ± 0.0053	Std Dev: 0.2230 ± 0.0023	Std Dev: 0.1750 ± 0.0045

**Cycle 12, NegHel**

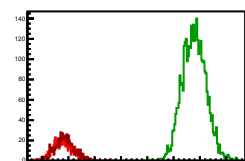
Entries: 730	Entries: 3673	Entries: 744
Mean: 6.5566 ± 0.0060	Mean: 9.4227 ± 0.0038	Mean: 7.1971 ± 0.0071
Std Dev: 0.1861 ± 0.0049	Std Dev: 0.2225 ± 0.0027	Std Dev: 0.1920 ± 0.0050

**Cycle 13, NegHel**

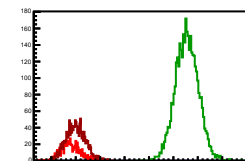
Entries: 760	Entries: 3783	Entries: 642
Mean: 7.1215 ± 0.0071	Mean: 9.4040 ± 0.0043	Mean: 6.9816 ± 0.0080
Std Dev: 0.1883 ± 0.0050	Std Dev: 0.2206 ± 0.0020	Std Dev: 0.2015 ± 0.0056

**Cycle 14, NegHel**

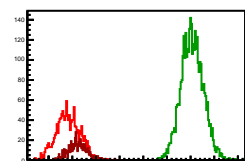
Entries: 630	Entries: 3689	Entries: 632
Mean: 6.8979 ± 0.0074	Mean: 9.3917 ± 0.0037	Mean: 6.9200 ± 0.0076
Std Dev: 0.1921 ± 0.0054	Std Dev: 0.2252 ± 0.0020	Std Dev: 0.1916 ± 0.0054

**Cycle 15, NegHel**

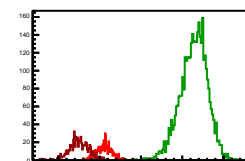
Entries: 628	Entries: 3712	Entries: 1492
Mean: 6.8974 ± 0.0091	Mean: 9.2760 ± 0.0038	Mean: 6.9397 ± 0.0063
Std Dev: 0.2041 ± 0.0058	Std Dev: 0.2239 ± 0.0022	Std Dev: 0.2016 ± 0.0037

**Cycle 16, NegHel**

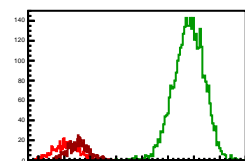
Entries: 1444	Entries: 3694	Entries: 642
Mean: 6.9177 ± 0.0068	Mean: 9.4509 ± 0.0039	Mean: 7.1126 ± 0.0075
Std Dev: 0.2054 ± 0.0047	Std Dev: 0.2243 ± 0.0022	Std Dev: 0.1908 ± 0.0053

**Cycle 17, NegHel**

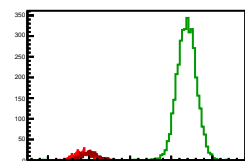
Entries: 630	Entries: 3756	Entries: 626
Mean: 6.1114 ± 0.0076	Mean: 9.2608 ± 0.0053	Mean: 6.4978 ± 0.0091
Std Dev: 0.1834 ± 0.0054	Std Dev: 0.2270 ± 0.0030	Std Dev: 0.2285 ± 0.0065

**Cycle 18, NegHel**

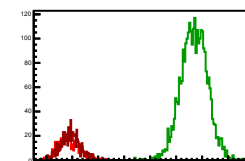
Entries: 621	Entries: 3724	Entries: 652
Mean: 6.1116 ± 0.0097	Mean: 9.9001 ± 0.0047	Mean: 6.9739 ± 0.0079
Std Dev: 0.2428 ± 0.0069	Std Dev: 0.2097 ± 0.0034	Std Dev: 0.2000 ± 0.0056

**Cycle 19, NegHel**

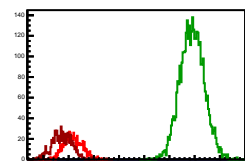
Entries: 640	Entries: 3736	Entries: 625
Mean: 6.8520 ± 0.0080	Mean: 9.3765 ± 0.0040	Mean: 7.0126 ± 0.0076
Std Dev: 0.2019 ± 0.0056	Std Dev: 0.2448 ± 0.0020	Std Dev: 0.1895 ± 0.0054

**Cycle 20, NegHel**

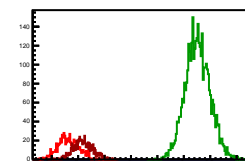
Entries: 628	Entries: 2878	Entries: 681
Mean: 6.9305 ± 0.0077	Mean: 9.3448 ± 0.0047	Mean: 6.9634 ± 0.0074
Std Dev: 0.1934 ± 0.0058	Std Dev: 0.2532 ± 0.0022	Std Dev: 0.1920 ± 0.0052

**Cycle 21, NegHel**

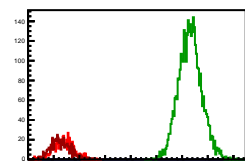
Entries: 741	Entries: 3706	Entries: 719
Mean: 6.9777 ± 0.0068	Mean: 9.4509 ± 0.0039	Mean: 6.8702 ± 0.0073
Std Dev: 0.1848 ± 0.0048	Std Dev: 0.2283 ± 0.0022	Std Dev: 0.1865 ± 0.0052

**Cycle 22, NegHel**

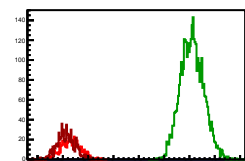
Entries: 697	Entries: 3778	Entries: 658
Mean: 6.1133 ± 0.0076	Mean: 9.2608 ± 0.0053	Mean: 7.0951 ± 0.0073
Std Dev: 0.2000 ± 0.0054	Std Dev: 0.2239 ± 0.0027	Std Dev: 0.1873 ± 0.0052

**Cycle 23, NegHel**

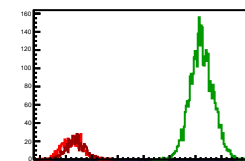
Entries: 652	Entries: 3664	Entries: 658
Mean: 7.1798 ± 0.0076	Mean: 9.5560 ± 0.0037	Mean: 7.1255 ± 0.0075
Std Dev: 0.1938 ± 0.0054	Std Dev: 0.2250 ± 0.0022	Std Dev: 0.1831 ± 0.0053

**Cycle 24, NegHel**

Entries: 652	Entries: 3725	Entries: 771
Mean: 6.1533 ± 0.0077	Mean: 9.5527 ± 0.0038	Mean: 7.0660 ± 0.0066
Std Dev: 0.1986 ± 0.0054	Std Dev: 0.2301 ± 0.0022	Std Dev: 0.1831 ± 0.0047

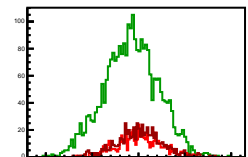
**Cycle 25, NegHel**

Entries: 727	Entries: 3681	Entries: 666
Mean: 6.1132 ± 0.0072	Mean: 9.6187 ± 0.0037	Mean: 7.3917 ± 0.0072
Std Dev: 0.1984 ± 0.0051	Std Dev: 0.2231 ± 0.0022	Std Dev: 0.1867 ± 0.0051

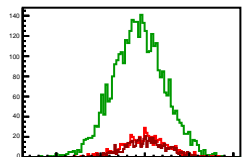


**Cycle 1, Diffs**

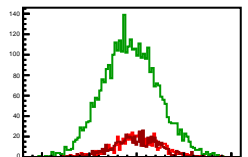
Entries: 592	Entries: 2741	Entries: 622
Mean: -0.0091 ± 0.0098	Mean: -0.0724 ± 0.0056	Mean: 0.0071 ± 0.0096
Std Dev: 0.2379 ± 0.0093	Std Dev: 0.2916 ± 0.0033	Std Dev: 0.2438 ± 0.0069

**Cycle 2, Diffs**

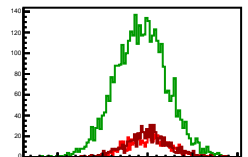
Entries: 610	Entries: 3793	Entries: 587
Mean: 0.0118 ± 0.0103	Mean: -0.0696 ± 0.0047	Mean: 0.0165 ± 0.0099
Std Dev: 0.2324 ± 0.0073	Std Dev: 0.2895 ± 0.0033	Std Dev: 0.2397 ± 0.0070

**Cycle 3, Diffs**

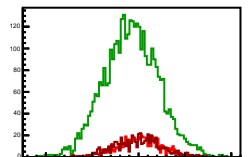
Entries: 591	Entries: 3665	Entries: 635
Mean: -0.0023 ± 0.0104	Mean: -0.0630 ± 0.0045	Mean: -0.0046 ± 0.0099
Std Dev: 0.2517 ± 0.0073	Std Dev: 0.2937 ± 0.0033	Std Dev: 0.2488 ± 0.0070

**Cycle 4, Diffs**

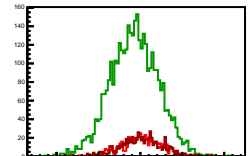
Entries: 622	Entries: 3761	Entries: 673
Mean: 0.0054 ± 0.0095	Mean: -0.0699 ± 0.0047	Mean: 0.0048 ± 0.0095
Std Dev: 0.2362 ± 0.0067	Std Dev: 0.2888 ± 0.0033	Std Dev: 0.2458 ± 0.0067

**Cycle 5, Diffs**

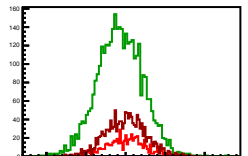
Entries: 650	Entries: 3749	Entries: 692
Mean: 0.0012 ± 0.0091	Mean: -0.0779 ± 0.0045	Mean: -0.0025 ± 0.0102
Std Dev: 0.2318 ± 0.0064	Std Dev: 0.2933 ± 0.0033	Std Dev: 0.2500 ± 0.0072

**Cycle 6, Diffs**

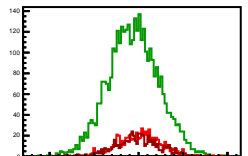
Entries: 600	Entries: 3713	Entries: 668
Mean: 0.0058 ± 0.0101	Mean: -0.0724 ± 0.0047	Mean: 0.0122 ± 0.0094
Std Dev: 0.2467 ± 0.0071	Std Dev: 0.2864 ± 0.0033	Std Dev: 0.2438 ± 0.0069

**Cycle 7, Diffs**

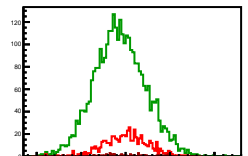
Entries: 643	Entries: 3644	Entries: 1416
Mean: 0.0029 ± 0.0098	Mean: -0.0700 ± 0.0047	Mean: -0.0003 ± 0.0097
Std Dev: 0.2465 ± 0.0069	Std Dev: 0.2895 ± 0.0033	Std Dev: 0.2459 ± 0.0069

**Cycle 8, Diffs**

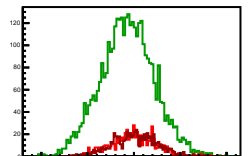
Entries: 645	Entries: 3647	Entries: 600
Mean: 0.0083 ± 0.0094	Mean: -0.0590 ± 0.0047	Mean: -0.0079 ± 0.0100
Std Dev: 0.2476 ± 0.0069	Std Dev: 0.2845 ± 0.0033	Std Dev: 0.2439 ± 0.0070

**Cycle 9, Diffs**

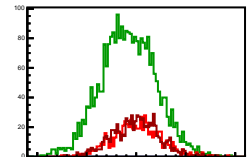
Entries: 599	Entries: 3292	Entries: 43
Mean: 0.0038 ± 0.0102	Mean: -0.0635 ± 0.0050	Mean: 0.0082 ± 0.0074
Std Dev: 0.2490 ± 0.0070	Std Dev: 0.2890 ± 0.0033	Std Dev: 0.2451 ± 0.0064

**Cycle 10, Diffs**

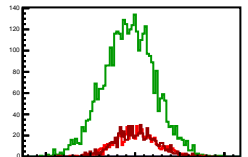
Entries: 639	Entries: 3736	Entries: 682
Mean: -0.0055 ± 0.0099	Mean: -0.0704 ± 0.0047	Mean: 0.0087 ± 0.0092
Std Dev: 0.2513 ± 0.0070	Std Dev: 0.2899 ± 0.0033	Std Dev: 0.2415 ± 0.0065

**Cycle 11, Diffs**

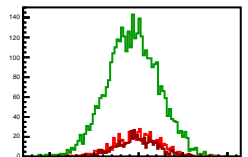
Entries: 602	Entries: 3786	Entries: 779
Mean: 0.0039 ± 0.0095	Mean: -0.0790 ± 0.0053	Mean: -0.0022 ± 0.0094
Std Dev: 0.2469 ± 0.0068	Std Dev: 0.2884 ± 0.0033	Std Dev: 0.2438 ± 0.0069

**Cycle 12, Diffs**

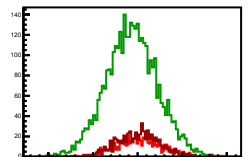
Entries: 730	Entries: 3673	Entries: 744
Mean: 0.0057 ± 0.0098	Mean: -0.0667 ± 0.0047	Mean: 0.0003 ± 0.0099
Std Dev: 0.2384 ± 0.0062	Std Dev: 0.2876 ± 0.0034	Std Dev: 0.2423 ± 0.0063

**Cycle 13, Diffs**

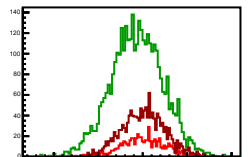
Entries: 760	Entries: 3783	Entries: 642
Mean: -0.0018 ± 0.0094	Mean: -0.0645 ± 0.0047	Mean: -0.0191 ± 0.0094
Std Dev: 0.2507 ± 0.0067	Std Dev: 0.2917 ± 0.0033	Std Dev: 0.2393 ± 0.0067

**Cycle 14, Diffs**

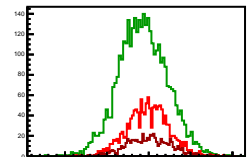
Entries: 639	Entries: 3689	Entries: 632
Mean: 0.0054 ± 0.0096	Mean: -0.0672 ± 0.0048	Mean: 0.0095 ± 0.0097
Std Dev: 0.2478 ± 0.0070	Std Dev: 0.2888 ± 0.0033	Std Dev: 0.2451 ± 0.0069

**Cycle 15, Diffs**

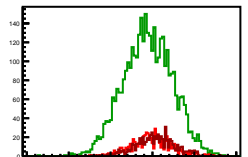
Entries: 628	Entries: 3712	Entries: 1492
Mean: 0.0034 ± 0.0100	Mean: -0.0667 ± 0.0048	Mean: 0.0064 ± 0.0094
Std Dev: 0.2488 ± 0.0070	Std Dev: 0.2929 ± 0.0033	Std Dev: 0.2439 ± 0.0065

**Cycle 16, Diffs**

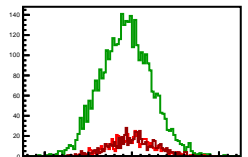
Entries: 1444	Entries: 3694	Entries: 642
Mean: -0.0125 ± 0.0087	Mean: -0.0685 ± 0.0049	Mean: 0.0023 ± 0.0100
Std Dev: 0.2422 ± 0.0045	Std Dev: 0.2883 ± 0.0034	Std Dev: 0.2538 ± 0.0071

**Cycle 17, Diffs**

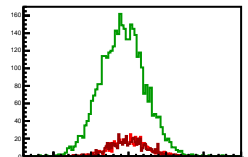
Entries: 630	Entries: 3756	Entries: 626
Mean: -0.0015 ± 0.0092	Mean: -0.0651 ± 0.0048	Mean: 0.0025 ± 0.0094
Std Dev: 0.2463 ± 0.0068	Std Dev: 0.2925 ± 0.0034	Std Dev: 0.2342 ± 0.0066

**Cycle 18, Diffs**

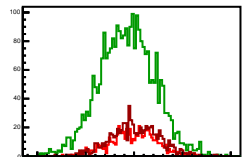
Entries: 621	Entries: 3724	Entries: 652
Mean: -0.0076 ± 0.0100	Mean: -0.0685 ± 0.0048	Mean: -0.0193 ± 0.0100
Std Dev: 0.2464 ± 0.0070	Std Dev: 0.2890 ± 0.0033	Std Dev: 0.2558 ± 0.0071

**Cycle 19, Diffs**

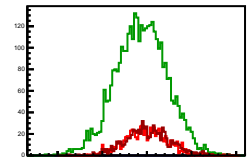
Entries: 640	Entries: 3736	Entries: 625
Mean: 0.0054 ± 0.0091	Mean: -0.0750 ± 0.0048	Mean: -0.0017 ± 0.0096
Std Dev: 0.2312 ± 0.0065	Std Dev: 0.2910 ± 0.0034	Std Dev: 0.2402 ± 0.0068

**Cycle 20, Diffs**

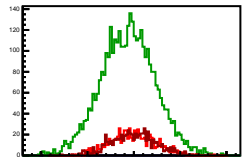
Entries: 628	Entries: 2878	Entries: 681
Mean: -0.0014 ± 0.0096	Mean: -0.0744 ± 0.0053	Mean: 0.0064 ± 0.0096
Std Dev: 0.2397 ± 0.0068	Std Dev: 0.2852 ± 0.0033	Std Dev: 0.2593 ± 0.0068

**Cycle 21, Diffs**

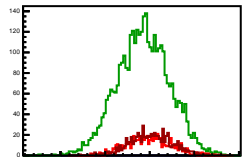
Entries: 741	Entries: 3706	Entries: 719
Mean: -0.0127 ± 0.0087	Mean: -0.0661 ± 0.0048	Mean: 0.0123 ± 0.0095
Std Dev: 0.2381 ± 0.0062	Std Dev: 0.2895 ± 0.0034	Std Dev: 0.2538 ± 0.0067

**Cycle 22, Diffs**

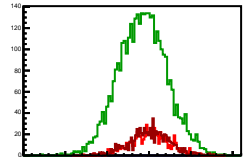
Entries: 697	Entries: 3778	Entries: 658
Mean: -0.0095 ± 0.0092	Mean: -0.0642 ± 0.0048	Mean: -0.0048 ± 0.0095
Std Dev: 0.2424 ± 0.0065	Std Dev: 0.2933 ± 0.0034	Std Dev: 0.2430 ± 0.0067

**Cycle 23, Diffs**

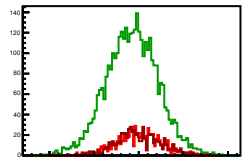
Entries: 652	Entries: 3664	Entries: 658
Mean: -0.0091 ± 0.0100	Mean: -0.0726 ± 0.0048	Mean: -0.0193 ± 0.0092
Std Dev: 0.2543 ± 0.0070	Std Dev: 0.2930 ± 0.0033	Std Dev: 0.2393 ± 0.0065

**Cycle 24, Diffs**

Entries: 652	Entries: 3725	Entries: 771
Mean: 0.0115 ± 0.0095	Mean: -0.0750 ± 0.0047	Mean: 0.0052 ± 0.0097
Std Dev: 0.2430 ± 0.0067	Std Dev: 0.2894 ± 0.0033	Std Dev: 0.2408 ± 0.0061

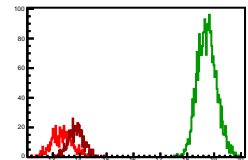
**Cycle 25, Diffs**

Entries: 727	Entries: 3681	Entries: 666
Mean: 0.0028 ± 0.0091	Mean: -0.0743 ± 0.0048	Mean: -0.0019 ± 0.0098
Std Dev: 0.2487 ± 0.0065	Std Dev: 0.2917 ± 0.0033	Std Dev: 0.2530 ± 0.0069



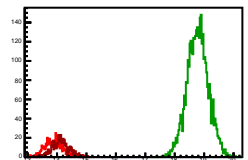
### Cycle 1, Sums

Entries: 592	Entries: 2741	Entries: 622
Mean: 13.3390 ± 0.0155	Mean: 18.7359 ± 0.0068	Mean: 13.8672 ± 0.0113
Std Dev: 0.3760 ± 0.0109	Std Dev: 0.3539 ± 0.0044	Std Dev: 0.2824 ± 0.0080



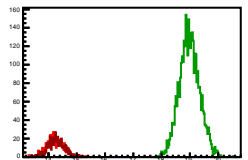
### Cycle 2, Sums

Entries: 610	Entries: 3793	Entries: 587
Mean: 13.8720 ± 0.0116	Mean: 18.7625 ± 0.0059	Mean: 14.1209 ± 0.0116
Std Dev: 0.2924 ± 0.0084	Std Dev: 0.3625 ± 0.0042	Std Dev: 0.2966 ± 0.0081



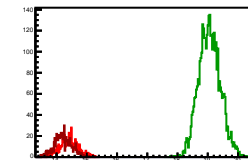
### Cycle 3, Sums

Entries: 591	Entries: 3665	Entries: 635
Mean: 14.2301 ± 0.0122	Mean: 18.9835 ± 0.0059	Mean: 14.2895 ± 0.0111
Std Dev: 0.2966 ± 0.0086	Std Dev: 0.3587 ± 0.0042	Std Dev: 0.2949 ± 0.0083



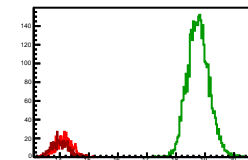
### Cycle 4, Sums

Entries: 622	Entries: 3761	Entries: 673
Mean: 14.3903 ± 0.0118	Mean: 19.0602 ± 0.0058	Mean: 14.2129 ± 0.0111
Std Dev: 0.2933 ± 0.0084	Std Dev: 0.3565 ± 0.0041	Std Dev: 0.2876 ± 0.0078



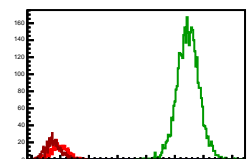
### Cycle 5, Sums

Entries: 650	Entries: 3749	Entries: 692
Mean: 14.1410 ± 0.0112	Mean: 19.7657 ± 0.0061	Mean: 14.0022 ± 0.0116
Std Dev: 0.2868 ± 0.0080	Std Dev: 0.3722 ± 0.0041	Std Dev: 0.2840 ± 0.0082



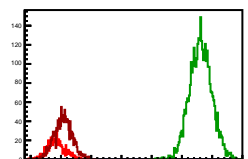
### Cycle 6, Sums

Entries: 600	Entries: 3713	Entries: 668
Mean: 13.9664 ± 0.0119	Mean: 18.4642 ± 0.0062	Mean: 13.7564 ± 0.0103
Std Dev: 0.2869 ± 0.0078	Std Dev: 0.3806 ± 0.0041	Std Dev: 0.2861 ± 0.0079



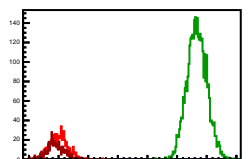
### Cycle 7, Sums

Entries: 643	Entries: 3644	Entries: 1416
Mean: 13.8424 ± 0.0117	Mean: 18.5177 ± 0.0061	Mean: 14.0771 ± 0.0079
Std Dev: 0.2968 ± 0.0083	Std Dev: 0.3494 ± 0.0041	Std Dev: 0.2971 ± 0.0059



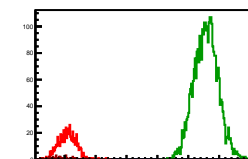
### Cycle 8, Sums

Entries: 645	Entries: 3647	Entries: 600
Mean: 14.0092 ± 0.0123	Mean: 18.6702 ± 0.0055	Mean: 13.8914 ± 0.0116
Std Dev: 0.3138 ± 0.0087	Std Dev: 0.3382 ± 0.0039	Std Dev: 0.2847 ± 0.0082



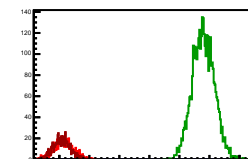
### Cycle 9, Sums

Entries: 599	Entries: 3252	Entries: 43
Mean: 14.0814 ± 0.0117	Mean: 18.5744 ± 0.0058	Mean: 13.9001 ± 0.0141
Std Dev: 0.2866 ± 0.0083	Std Dev: 0.3881 ± 0.0040	Std Dev: 0.2889 ± 0.0091



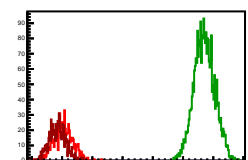
### Cycle 10, Sums

Entries: 639	Entries: 3736	Entries: 682
Mean: 14.1468 ± 0.0124	Mean: 18.7980 ± 0.0059	Mean: 14.0838 ± 0.0107
Std Dev: 0.3141 ± 0.0088	Std Dev: 0.3633 ± 0.0041	Std Dev: 0.2798 ± 0.0076



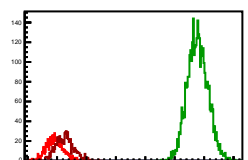
### Cycle 11, Sums

Entries: 602	Entries: 3298	Entries: 779
Mean: 14.0525 ± 0.0119	Mean: 18.7049 ± 0.0065	Mean: 13.8249 ± 0.0100
Std Dev: 0.3063 ± 0.0084	Std Dev: 0.3414 ± 0.0041	Std Dev: 0.2798 ± 0.0071



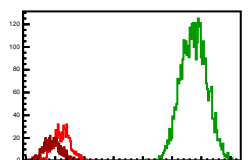
### Cycle 12, Sums

Entries: 730	Entries: 3673	Entries: 744
Mean: 13.9189 ± 0.0116	Mean: 18.7707 ± 0.0058	Mean: 14.2681 ± 0.0112
Std Dev: 0.2883 ± 0.0078	Std Dev: 0.3496 ± 0.0041	Std Dev: 0.3052 ± 0.0079



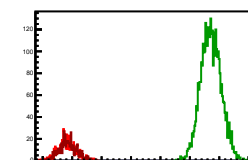
### Cycle 13, Sums

Entries: 709	Entries: 3783	Entries: 642
Mean: 14.3268 ± 0.0120	Mean: 18.7447 ± 0.0071	Mean: 13.9058 ± 0.0121
Std Dev: 0.2920 ± 0.0078	Std Dev: 0.4380 ± 0.0050	Std Dev: 0.3068 ± 0.0086



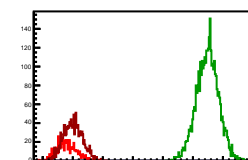
### Cycle 14, Sums

Entries: 639	Entries: 3689	Entries: 632
Mean: 13.9716 ± 0.0117	Mean: 18.7162 ± 0.0059	Mean: 13.8874 ± 0.0120
Std Dev: 0.2949 ± 0.0083	Std Dev: 0.3422 ± 0.0040	Std Dev: 0.3019 ± 0.0085



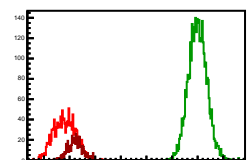
### Cycle 15, Sums

Entries: 628	Entries: 3712	Entries: 1402
Mean: 13.9719 ± 0.0121	Mean: 18.4853 ± 0.0060	Mean: 14.3038 ± 0.0084
Std Dev: 0.3278 ± 0.0082	Std Dev: 0.3674 ± 0.0041	Std Dev: 0.3208 ± 0.0080



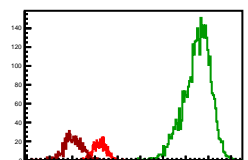
### Cycle 16, Sums

Entries: 1444	Entries: 3694	Entries: 642
Mean: 14.0123 ± 0.0119	Mean: 18.8048 ± 0.0061	Mean: 14.2249 ± 0.0114
Std Dev: 0.4188 ± 0.0078	Std Dev: 0.3600 ± 0.0041	Std Dev: 0.3201 ± 0.0081



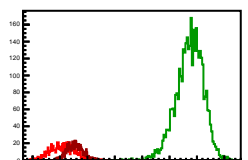
### Cycle 17, Sums

Entries: 630	Entries: 3756	Entries: 626
Mean: 14.2103 ± 0.0122	Mean: 18.4574 ± 0.0056	Mean: 14.1824 ± 0.0101
Std Dev: 0.2785 ± 0.0078	Std Dev: 0.5897 ± 0.0068	Std Dev: 0.4021 ± 0.0114



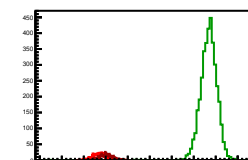
### Cycle 18, Sums

Entries: 621	Entries: 3724	Entries: 652
Mean: 13.8783 ± 0.0120	Mean: 17.7317 ± 0.0081	Mean: 14.2753 ± 0.0118
Std Dev: 0.4291 ± 0.0122	Std Dev: 0.4956 ± 0.0097	Std Dev: 0.2958 ± 0.0082



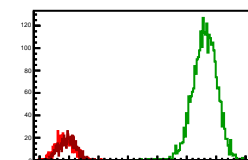
### Cycle 19, Sums

Entries: 640	Entries: 3736	Entries: 625
Mean: 13.9126 ± 0.0120	Mean: 18.6002 ± 0.0064	Mean: 14.0235 ± 0.0118
Std Dev: 0.3250 ± 0.0081	Std Dev: 0.3910 ± 0.0040	Std Dev: 0.2945 ± 0.0083



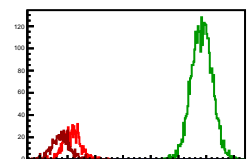
### Cycle 20, Sums

Entries: 628	Entries: 3878	Entries: 681
Mean: 14.2281 ± 0.0121	Mean: 18.6152 ± 0.0070	Mean: 14.3032 ± 0.0108
Std Dev: 0.3017 ± 0.0085	Std Dev: 0.4066 ± 0.0051	Std Dev: 0.2827 ± 0.0077



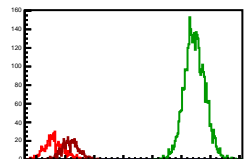
### Cycle 21, Sums

Entries: 741	Entries: 3706	Entries: 719
Mean: 14.0123 ± 0.0119	Mean: 18.8048 ± 0.0061	Mean: 14.2249 ± 0.0114
Std Dev: 0.2869 ± 0.0077	Std Dev: 0.3732 ± 0.0041	Std Dev: 0.3109 ± 0.0082



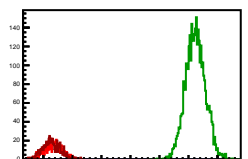
### Cycle 22, Sums

Entries: 697	Entries: 3778	Entries: 658
Mean: 14.2103 ± 0.0122	Mean: 18.4574 ± 0.0056	Mean: 14.1824 ± 0.0101
Std Dev: 0.3355 ± 0.0080	Std Dev: 0.3547 ± 0.0041	Std Dev: 0.2888 ± 0.0077



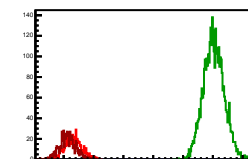
### Cycle 23, Sums

Entries: 652	Entries: 3664	Entries: 658
Mean: 14.3481 ± 0.0120	Mean: 19.2034 ± 0.0059	Mean: 14.2753 ± 0.0119
Std Dev: 0.3043 ± 0.0084	Std Dev: 0.3419 ± 0.0040	Std Dev: 0.3048 ± 0.0084



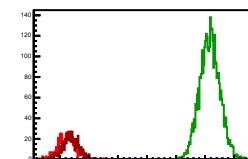
### Cycle 24, Sums

Entries: 652	Entries: 3725	Entries: 771
Mean: 14.3181 ± 0.0120	Mean: 19.0302 ± 0.0057	Mean: 14.1375 ± 0.0099
Std Dev: 0.2897 ± 0.0082	Std Dev: 0.3455 ± 0.0040	Std Dev: 0.2748 ± 0.0070



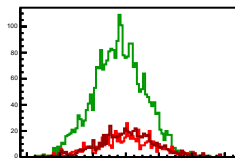
### Cycle 25, Sums

Entries: 727	Entries: 3681	Entries: 666
Mean: 14.2281 ± 0.0121	Mean: 19.1522 ± 0.0057	Mean: 14.3814 ± 0.0110
Std Dev: 0.2888 ± 0.0078	Std Dev: 0.3480 ± 0.0040	Std Dev: 0.2840 ± 0.0078

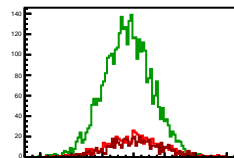


**Cycle 1, Asyms**

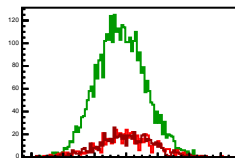
Entries: 592	Entries: 2741	Entries: 622
Mean: 0.0009 ± 0.0007	Mean: -0.0042 ± 0.0003	Mean: 0.0005 ± 0.0007
Std Dev: 0.0176 ± 0.0005	Std Dev: 0.0155 ± 0.0002	Std Dev: 0.0175 ± 0.0005

**Cycle 2, Asyms**

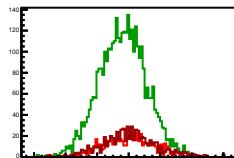
Entries: 610	Entries: 3793	Entries: 587
Mean: 0.0009 ± 0.0007	Mean: -0.0037 ± 0.0003	Mean: 0.0012 ± 0.0007
Std Dev: 0.0182 ± 0.0005	Std Dev: 0.0154 ± 0.0002	Std Dev: 0.0170 ± 0.0005

**Cycle 3, Asyms**

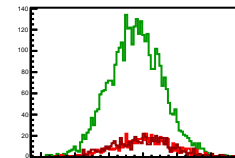
Entries: 591	Entries: 3665	Entries: 635
Mean: -0.0001 ± 0.0007	Mean: -0.0033 ± 0.0003	Mean: -0.0003 ± 0.0007
Std Dev: 0.0176 ± 0.0005	Std Dev: 0.0155 ± 0.0002	Std Dev: 0.0174 ± 0.0005

**Cycle 4, Asyms**

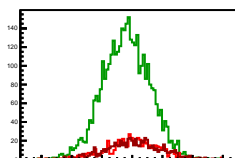
Entries: 622	Entries: 3761	Entries: 673
Mean: 0.0004 ± 0.0007	Mean: -0.0037 ± 0.0002	Mean: 0.0003 ± 0.0007
Std Dev: 0.0164 ± 0.0005	Std Dev: 0.0150 ± 0.0002	Std Dev: 0.0172 ± 0.0005

**Cycle 5, Asyms**

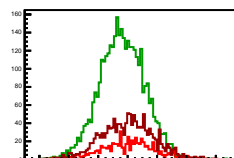
Entries: 650	Entries: 3749	Entries: 692
Mean: 0.0001 ± 0.0006	Mean: -0.0041 ± 0.0003	Mean: -0.0002 ± 0.0007
Std Dev: 0.0164 ± 0.0005	Std Dev: 0.0156 ± 0.0002	Std Dev: 0.0178 ± 0.0005

**Cycle 6, Asyms**

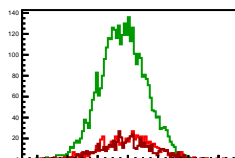
Entries: 600	Entries: 3713	Entries: 668
Mean: 0.0005 ± 0.0007	Mean: -0.0039 ± 0.0003	Mean: 0.0009 ± 0.0007
Std Dev: 0.0177 ± 0.0005	Std Dev: 0.0155 ± 0.0002	Std Dev: 0.0176 ± 0.0005

**Cycle 7, Asyms**

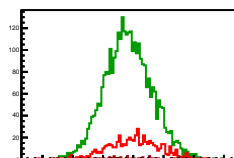
Entries: 643	Entries: 3644	Entries: 1416
Mean: 0.0002 ± 0.0007	Mean: -0.0038 ± 0.0003	Mean: -0.0006 ± 0.0005
Std Dev: 0.0179 ± 0.0004	Std Dev: 0.0153 ± 0.0002	Std Dev: 0.0180 ± 0.0004

**Cycle 8, Asyms**

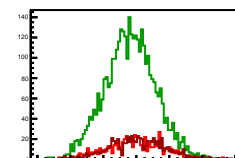
Entries: 645	Entries: 3647	Entries: 600
Mean: 0.0006 ± 0.0007	Mean: -0.0032 ± 0.0003	Mean: -0.0006 ± 0.0005
Std Dev: 0.0176 ± 0.0005	Std Dev: 0.0152 ± 0.0002	Std Dev: 0.0175 ± 0.0005

**Cycle 9, Asyms**

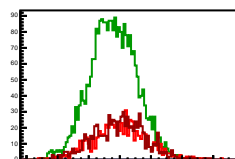
Entries: 599	Entries: 3252	Entries: 43
Mean: 0.0003 ± 0.0007	Mean: -0.0034 ± 0.0003	Mean: 0.0019 ± 0.0007
Std Dev: 0.0176 ± 0.0005	Std Dev: 0.0155 ± 0.0002	Std Dev: 0.0178 ± 0.0019

**Cycle 10, Asyms**

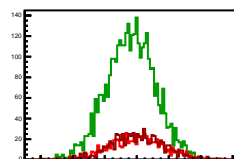
Entries: 639	Entries: 3736	Entries: 682
Mean: -0.0004 ± 0.0007	Mean: -0.0037 ± 0.0003	Mean: 0.0006 ± 0.0007
Std Dev: 0.0177 ± 0.0005	Std Dev: 0.0154 ± 0.0002	Std Dev: 0.0171 ± 0.0005

**Cycle 11, Asyms**

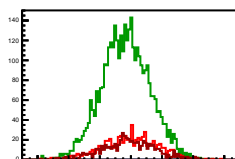
Entries: 603	Entries: 3726	Entries: 779
Mean: 0.0004 ± 0.0007	Mean: -0.0042 ± 0.0003	Mean: -0.0002 ± 0.0004
Std Dev: 0.0175 ± 0.0005	Std Dev: 0.0150 ± 0.0002	Std Dev: 0.0169 ± 0.0004

**Cycle 12, Asyms**

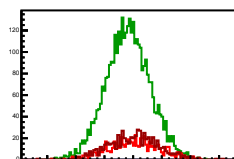
Entries: 730	Entries: 3673	Entries: 744
Mean: 0.0004 ± 0.0006	Mean: -0.0037 ± 0.0003	Mean: 0.0004 ± 0.0004
Std Dev: 0.0171 ± 0.0004	Std Dev: 0.0153 ± 0.0002	Std Dev: 0.0170 ± 0.0004

**Cycle 13, Asyms**

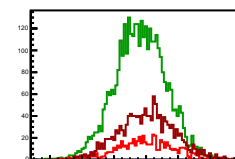
Entries: 760	Entries: 3783	Entries: 642
Mean: -0.0006 ± 0.0007	Mean: -0.0034 ± 0.0003	Mean: -0.0013 ± 0.0007
Std Dev: 0.0176 ± 0.0005	Std Dev: 0.0155 ± 0.0002	Std Dev: 0.0172 ± 0.0005

**Cycle 14, Asyms**

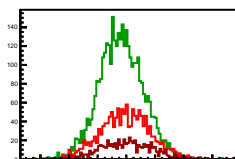
Entries: 639	Entries: 3689	Entries: 632
Mean: 0.0004 ± 0.0007	Mean: -0.0036 ± 0.0003	Mean: 0.0007 ± 0.0007
Std Dev: 0.0179 ± 0.0005	Std Dev: 0.0154 ± 0.0002	Std Dev: 0.0176 ± 0.0005

**Cycle 15, Asyms**

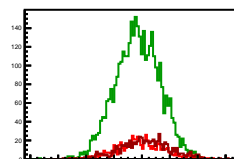
Entries: 629	Entries: 3713	Entries: 1402
Mean: 0.0006 ± 0.0007	Mean: -0.0036 ± 0.0003	Mean: 0.0005 ± 0.0005
Std Dev: 0.0180 ± 0.0005	Std Dev: 0.0150 ± 0.0002	Std Dev: 0.0174 ± 0.0005

**Cycle 16, Asyms**

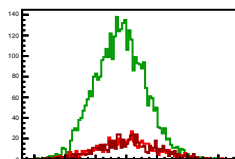
Entries: 1444	Entries: 3694	Entries: 642
Mean: -0.0009 ± 0.0005	Mean: -0.0036 ± 0.0003	Mean: 0.0000 ± 0.0007
Std Dev: 0.0175 ± 0.0003	Std Dev: 0.0152 ± 0.0002	Std Dev: 0.0176 ± 0.0005

**Cycle 17, Asyms**

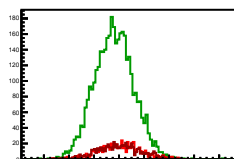
Entries: 630	Entries: 3756	Entries: 626
Mean: -0.0007 ± 0.0007	Mean: -0.0035 ± 0.0003	Mean: -0.0003 ± 0.0007
Std Dev: 0.0169 ± 0.0005	Std Dev: 0.0158 ± 0.0002	Std Dev: 0.0179 ± 0.0005

**Cycle 18, Asyms**

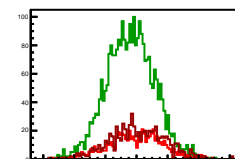
Entries: 621	Entries: 3724	Entries: 652
Mean: -0.0006 ± 0.0006	Mean: -0.0039 ± 0.0003	Mean: -0.0007 ± 0.0007
Std Dev: 0.0169 ± 0.0005	Std Dev: 0.0163 ± 0.0002	Std Dev: 0.0168 ± 0.0005

**Cycle 19, Asyms**

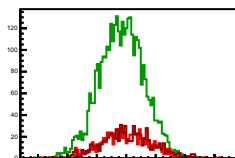
Entries: 640	Entries: 3736	Entries: 625
Mean: 0.0006 ± 0.0007	Mean: -0.0039 ± 0.0003	Mean: -0.0009 ± 0.0006
Std Dev: 0.0168 ± 0.0005	Std Dev: 0.0156 ± 0.0002	Std Dev: 0.0171 ± 0.0005

**Cycle 20, Asyms**

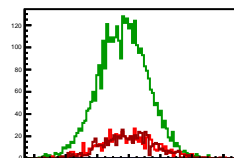
Entries: 628	Entries: 2878	Entries: 681
Mean: 0.0002 ± 0.0006	Mean: -0.0040 ± 0.0003	Mean: 0.0005 ± 0.0007
Std Dev: 0.0173 ± 0.0005	Std Dev: 0.0153 ± 0.0002	Std Dev: 0.0179 ± 0.0005

**Cycle 21, Asyms**

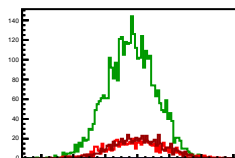
Entries: 741	Entries: 3706	Entries: 719
Mean: -0.0009 ± 0.0005	Mean: -0.0036 ± 0.0003	Mean: 0.0000 ± 0.0007
Std Dev: 0.0168 ± 0.0004	Std Dev: 0.0153 ± 0.0002	Std Dev: 0.0184 ± 0.0005

**Cycle 22, Asyms**

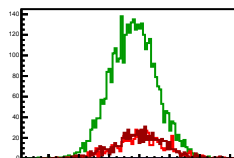
Entries: 697	Entries: 3778	Entries: 658
Mean: -0.0007 ± 0.0007	Mean: -0.0035 ± 0.0003	Mean: -0.0003 ± 0.0007
Std Dev: 0.0178 ± 0.0005	Std Dev: 0.0159 ± 0.0002	Std Dev: 0.0171 ± 0.0005

**Cycle 23, Asyms**

Entries: 652	Entries: 3664	Entries: 658
Mean: -0.0007 ± 0.0007	Mean: -0.0039 ± 0.0003	Mean: -0.0007 ± 0.0006
Std Dev: 0.0177 ± 0.0005	Std Dev: 0.0152 ± 0.0002	Std Dev: 0.0165 ± 0.0005

**Cycle 24, Asyms**

Entries: 652	Entries: 3725	Entries: 771
Mean: 0.0006 ± 0.0007	Mean: -0.0039 ± 0.0002	Mean: -0.0004 ± 0.0006
Std Dev: 0.0170 ± 0.0005	Std Dev: 0.0152 ± 0.0002	Std Dev: 0.0170 ± 0.0004

**Cycle 25, Asyms**

Entries: 727	Entries: 3681	Entries: 666
Mean: 0.0002 ± 0.0006	Mean: -0.0039 ± 0.0003	Mean: -0.0001 ± 0.0007
Std Dev: 0.0173 ± 0.0005	Std Dev: 0.0152 ± 0.0002	Std Dev: 0.0175 ± 0.0005

