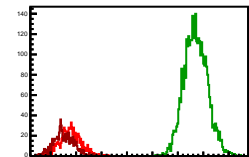


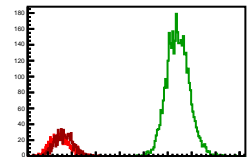
### Cycle 1, PosHel

Entries: 824	Entries: 3692	Entries: 829
Mean: 7.5977 ± 0.0070	Mean: 9.8523 ± 0.0038	Mean: 7.2559 ± 0.0066
Std Dev: 0.2089 ± 0.0048	Std Dev: 0.2293 ± 0.0027	Std Dev: 0.1844 ± 0.0046



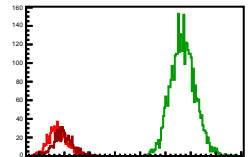
### Cycle 2, PosHel

Entries: 812	Entries: 3769	Entries: 822
Mean: 7.2556 ± 0.0068	Mean: 9.7114 ± 0.0038	Mean: 7.3387 ± 0.0066
Std Dev: 0.1973 ± 0.0048	Std Dev: 0.2342 ± 0.0027	Std Dev: 0.1893 ± 0.0047



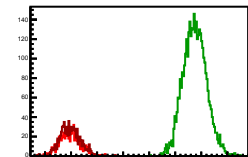
### Cycle 3, PosHel

Entries: 834	Entries: 3669	Entries: 812
Mean: 7.3441 ± 0.0066	Mean: 9.8459 ± 0.0040	Mean: 7.4748 ± 0.0066
Std Dev: 0.1996 ± 0.0046	Std Dev: 0.2440 ± 0.0026	Std Dev: 0.1898 ± 0.0047



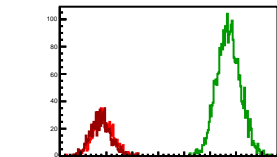
### Cycle 4, PosHel

Entries: 832	Entries: 3737	Entries: 808
Mean: 7.4739 ± 0.0068	Mean: 9.8760 ± 0.0037	Mean: 7.4810 ± 0.0069
Std Dev: 0.1932 ± 0.0048	Std Dev: 0.2231 ± 0.0026	Std Dev: 0.1864 ± 0.0049



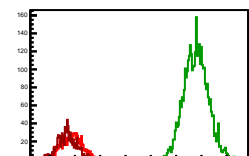
### Cycle 5, PosHel

Entries: 825	Entries: 2861	Entries: 877
Mean: 7.4237 ± 0.0068	Mean: 9.8557 ± 0.0043	Mean: 7.3918 ± 0.0066
Std Dev: 0.1981 ± 0.0048	Std Dev: 0.2280 ± 0.0026	Std Dev: 0.1945 ± 0.0046



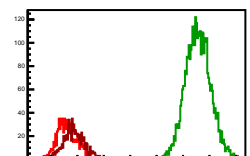
### Cycle 6, PosHel

Entries: 804	Entries: 3737	Entries: 890
Mean: 7.4481 ± 0.0068	Mean: 9.8962 ± 0.0039	Mean: 7.3436 ± 0.0066
Std Dev: 0.2030 ± 0.0048	Std Dev: 0.2372 ± 0.0027	Std Dev: 0.1861 ± 0.0046



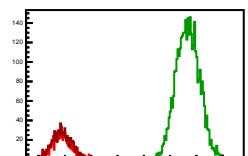
### Cycle 7, PosHel

Entries: 873	Entries: 3783	Entries: 838
Mean: 7.3104 ± 0.0067	Mean: 9.7837 ± 0.0038	Mean: 7.4971 ± 0.0070
Std Dev: 0.1980 ± 0.0046	Std Dev: 0.2364 ± 0.0027	Std Dev: 0.2071 ± 0.0049



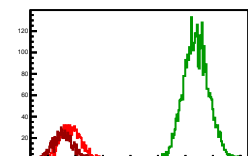
### Cycle 8, PosHel

Entries: 843	Entries: 3752	Entries: 821
Mean: 7.4550 ± 0.0064	Mean: 9.8363 ± 0.0036	Mean: 7.4348 ± 0.0065
Std Dev: 0.1854 ± 0.0045	Std Dev: 0.2226 ± 0.0026	Std Dev: 0.1895 ± 0.0046



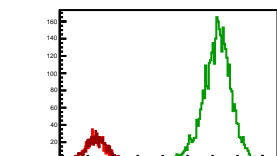
### Cycle 9, PosHel

Entries: 832	Entries: 3731	Entries: 810
Mean: 7.4141 ± 0.0067	Mean: 9.8983 ± 0.0038	Mean: 7.2696 ± 0.0064
Std Dev: 0.1943 ± 0.0048	Std Dev: 0.2292 ± 0.0026	Std Dev: 0.1819 ± 0.0045



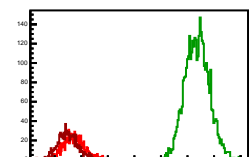
### Cycle 10, PosHel

Entries: 829	Entries: 2740	Entries: 856
Mean: 7.1625 ± 0.0066	Mean: 9.5935 ± 0.0044	Mean: 7.1797 ± 0.0065
Std Dev: 0.1947 ± 0.0048	Std Dev: 0.2794 ± 0.0031	Std Dev: 0.1895 ± 0.0046



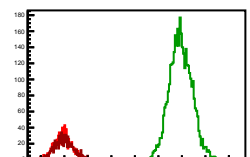
### Cycle 11, PosHel

Entries: 821	Entries: 3751	Entries: 822
Mean: 7.5819 ± 0.0070	Mean: 9.8815 ± 0.0038	Mean: 7.2672 ± 0.0068
Std Dev: 0.2015 ± 0.0050	Std Dev: 0.2301 ± 0.0027	Std Dev: 0.1860 ± 0.0048



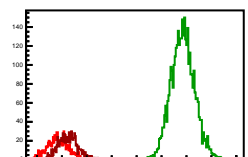
### Cycle 12, PosHel

Entries: 868	Entries: 3675	Entries: 848
Mean: 7.4710 ± 0.0064	Mean: 9.9748 ± 0.0040	Mean: 7.4956 ± 0.0070
Std Dev: 0.1899 ± 0.0046	Std Dev: 0.2299 ± 0.0026	Std Dev: 0.2071 ± 0.0049



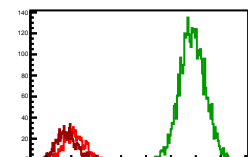
### Cycle 13, PosHel

Entries: 827	Entries: 3708	Entries: 797
Mean: 7.4225 ± 0.0072	Mean: 9.9260 ± 0.0039	Mean: 7.5687 ± 0.0071
Std Dev: 0.2076 ± 0.0051	Std Dev: 0.2366 ± 0.0027	Std Dev: 0.2089 ± 0.0050



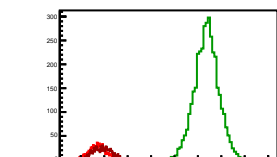
### Cycle 14, PosHel

Entries: 810	Entries: 3716	Entries: 841
Mean: 7.5670 ± 0.0072	Mean: 9.9348 ± 0.0042	Mean: 7.3891 ± 0.0067
Std Dev: 0.2048 ± 0.0051	Std Dev: 0.2533 ± 0.0028	Std Dev: 0.1955 ± 0.0048



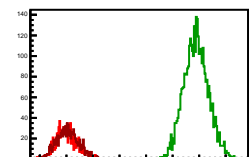
### Cycle 15, PosHel

Entries: 826	Entries: 3705	Entries: 811
Mean: 7.2630 ± 0.0064	Mean: 9.6631 ± 0.0044	Mean: 7.3633 ± 0.0065
Std Dev: 0.1848 ± 0.0045	Std Dev: 0.2675 ± 0.0031	Std Dev: 0.1968 ± 0.0046



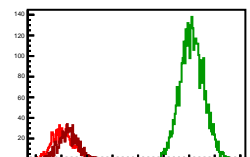
### Cycle 16, PosHel

Entries: 893	Entries: 3739	Entries: 880
Mean: 7.5829 ± 0.0066	Mean: 9.9426 ± 0.0038	Mean: 7.5234 ± 0.0071
Std Dev: 0.1971 ± 0.0047	Std Dev: 0.2320 ± 0.0027	Std Dev: 0.2096 ± 0.0050



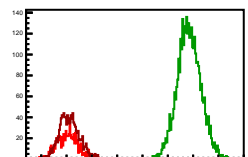
### Cycle 17, PosHel

Entries: 869	Entries: 3679	Entries: 812
Mean: 7.5230 ± 0.0066	Mean: 10.0133 ± 0.0038	Mean: 7.8091 ± 0.0067
Std Dev: 0.2011 ± 0.0047	Std Dev: 0.2287 ± 0.0027	Std Dev: 0.1993 ± 0.0047



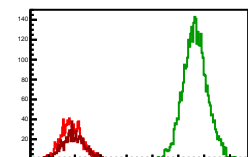
### Cycle 18, PosHel

Entries: 822	Entries: 3698	Entries: 1155
Mean: 7.5182 ± 0.0068	Mean: 9.9042 ± 0.0039	Mean: 7.4928 ± 0.0070
Std Dev: 0.2117 ± 0.0052	Std Dev: 0.2344 ± 0.0027	Std Dev: 0.2013 ± 0.0047



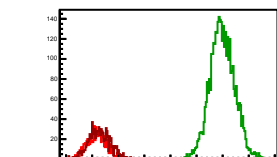
### Cycle 19, PosHel

Entries: 1130	Entries: 3709	Entries: 832
Mean: 7.4301 ± 0.0067	Mean: 9.8584 ± 0.0038	Mean: 7.4788 ± 0.0074
Std Dev: 0.2043 ± 0.0049	Std Dev: 0.2334 ± 0.0027	Std Dev: 0.2133 ± 0.0052



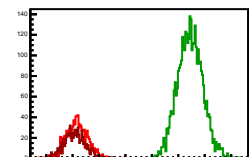
### Cycle 20, PosHel

Entries: 843	Entries: 3764	Entries: 946
Mean: 7.2850 ± 0.0068	Mean: 9.9922 ± 0.0038	Mean: 7.6441 ± 0.0067
Std Dev: 0.1983 ± 0.0048	Std Dev: 0.2345 ± 0.0027	Std Dev: 0.2048 ± 0.0047



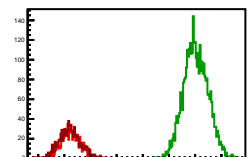
### Cycle 21, PosHel

Entries: 825	Entries: 3718	Entries: 836
Mean: 7.8112 ± 0.0068	Mean: 9.7244 ± 0.0038	Mean: 7.5233 ± 0.0070
Std Dev: 0.2053 ± 0.0048	Std Dev: 0.2393 ± 0.0028	Std Dev: 0.2028 ± 0.0050



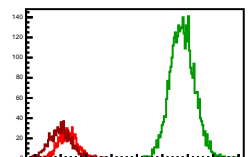
### Cycle 22, PosHel

Entries: 841	Entries: 3641	Entries: 815
Mean: 7.5230 ± 0.0066	Mean: 10.0133 ± 0.0038	Mean: 7.8091 ± 0.0071
Std Dev: 0.1913 ± 0.0047	Std Dev: 0.2219 ± 0.0027	Std Dev: 0.2023 ± 0.0050



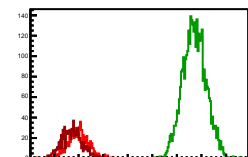
### Cycle 23, PosHel

Entries: 820	Entries: 3686	Entries: 833
Mean: 7.6382 ± 0.0068	Mean: 9.8042 ± 0.0039	Mean: 7.4928 ± 0.0070
Std Dev: 0.1937 ± 0.0048	Std Dev: 0.2380 ± 0.0028	Std Dev: 0.2134 ± 0.0048



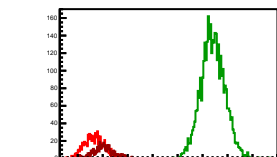
### Cycle 24, PosHel

Entries: 815	Entries: 3701	Entries: 864
Mean: 7.4901 ± 0.0067	Mean: 9.8584 ± 0.0038	Mean: 7.3638 ± 0.0069
Std Dev: 0.2034 ± 0.0048	Std Dev: 0.2386 ± 0.0028	Std Dev: 0.2049 ± 0.0049

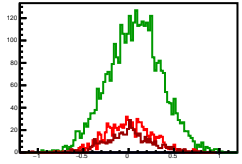
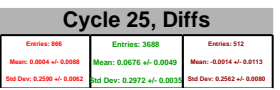
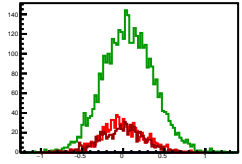
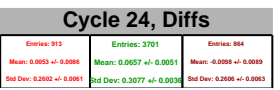
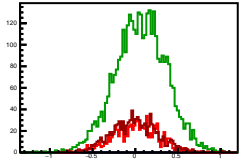
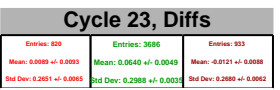
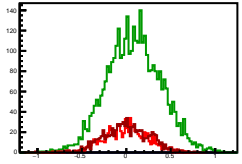
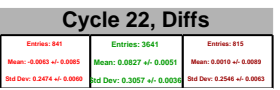
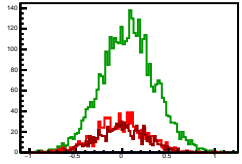
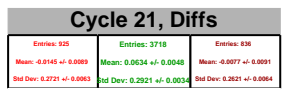
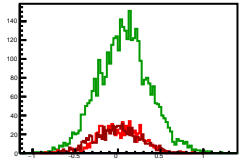
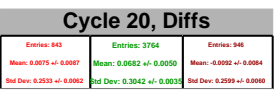
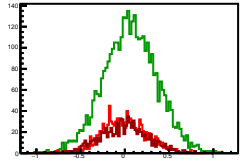
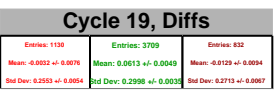
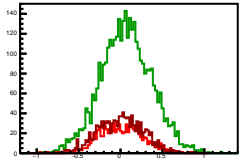
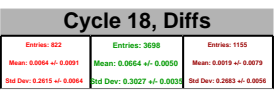
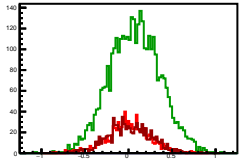
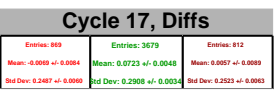
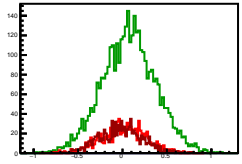
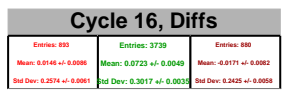
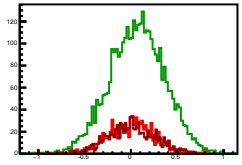
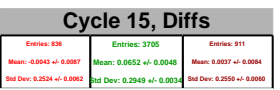
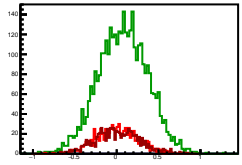
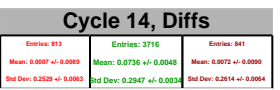
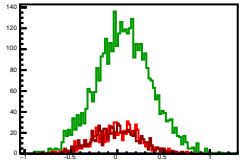
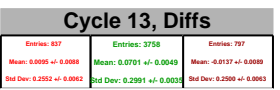
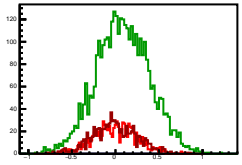
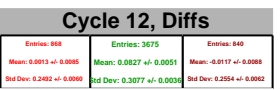
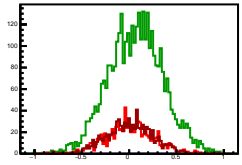
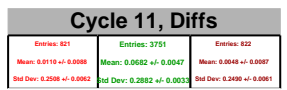
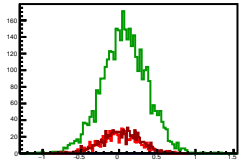
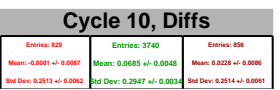
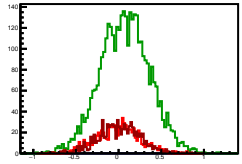
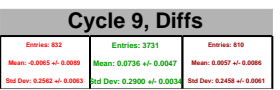
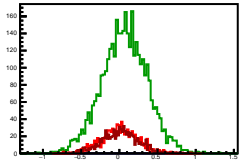
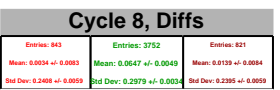
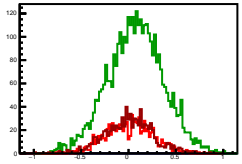
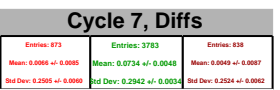
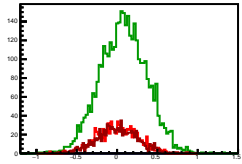
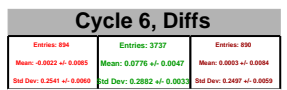
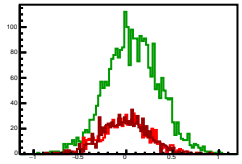
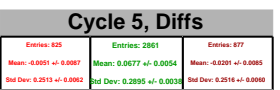
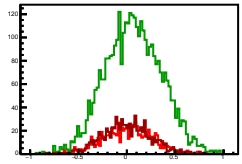
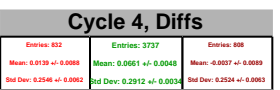
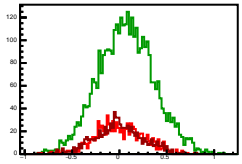
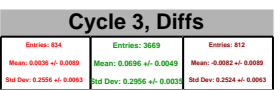
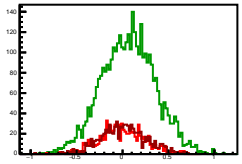
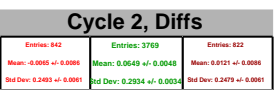
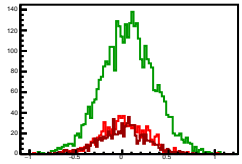
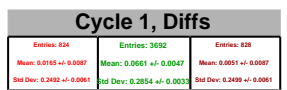


### Cycle 25, PosHel

Entries: 888	Entries: 3688	Entries: 552
Mean: 7.2877 ± 0.0068	Mean: 9.7071 ± 0.0038	Mean: 7.5158 ± 0.0091
Std Dev: 0.1983 ± 0.0048	Std Dev: 0.2270 ± 0.0028	Std Dev: 0.2062 ± 0.0049

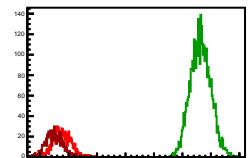






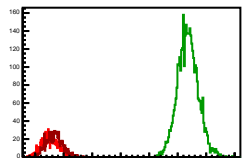
### Cycle 1, Sums

Entries: 824	Entries: 3692	Entries: 828
Mean: 14.7648 ± 0.0111	Mean: 19.6384 ± 0.0059	Mean: 14.4967 ± 0.0106
Std Dev: 0.3177 ± 0.0075	Std Dev: 0.3608 ± 0.0042	Std Dev: 0.3046 ± 0.0075



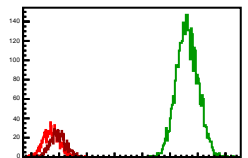
### Cycle 2, Sums

Entries: 842	Entries: 3769	Entries: 822
Mean: 14.5178 ± 0.0104	Mean: 19.5078 ± 0.0058	Mean: 14.6654 ± 0.0098
Std Dev: 0.3012 ± 0.0073	Std Dev: 0.3550 ± 0.0041	Std Dev: 0.2899 ± 0.0065



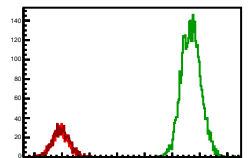
### Cycle 3, Sums

Entries: 834	Entries: 3669	Entries: 812
Mean: 14.7347 ± 0.0103	Mean: 19.6221 ± 0.0064	Mean: 14.9576 ± 0.0098
Std Dev: 0.2966 ± 0.0073	Std Dev: 0.3668 ± 0.0042	Std Dev: 0.2798 ± 0.0065



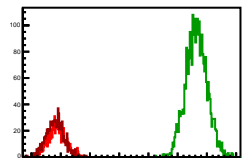
### Cycle 4, Sums

Entries: 832	Entries: 3737	Entries: 808
Mean: 14.9319 ± 0.0101	Mean: 19.6860 ± 0.0067	Mean: 14.9658 ± 0.0109
Std Dev: 0.2918 ± 0.0073	Std Dev: 0.3476 ± 0.0042	Std Dev: 0.3106 ± 0.0077



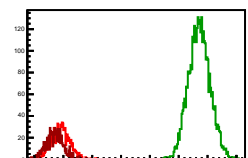
### Cycle 5, Sums

Entries: 825	Entries: 2861	Entries: 877
Mean: 14.8705 ± 0.0101	Mean: 19.6438 ± 0.0065	Mean: 14.8037 ± 0.0100
Std Dev: 0.3018 ± 0.0074	Std Dev: 0.3630 ± 0.0042	Std Dev: 0.2976 ± 0.0071



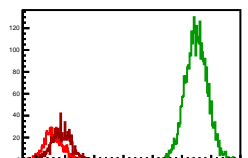
### Cycle 6, Sums

Entries: 804	Entries: 3737	Entries: 890
Mean: 14.8884 ± 0.0107	Mean: 19.7147 ± 0.0065	Mean: 14.6869 ± 0.0102
Std Dev: 0.3192 ± 0.0075	Std Dev: 0.3778 ± 0.0042	Std Dev: 0.3038 ± 0.0075



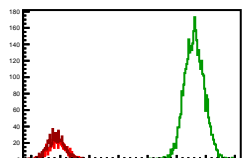
### Cycle 7, Sums

Entries: 873	Entries: 3783	Entries: 838
Mean: 14.6142 ± 0.0101	Mean: 19.4941 ± 0.0060	Mean: 14.8654 ± 0.0108
Std Dev: 0.3075 ± 0.0076	Std Dev: 0.3701 ± 0.0042	Std Dev: 0.3140 ± 0.0077



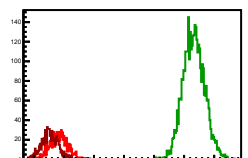
### Cycle 8, Sums

Entries: 843	Entries: 3752	Entries: 821
Mean: 14.3966 ± 0.0100	Mean: 19.6079 ± 0.0055	Mean: 14.8556 ± 0.0101
Std Dev: 0.3294 ± 0.0076	Std Dev: 0.3354 ± 0.0042	Std Dev: 0.2898 ± 0.0071



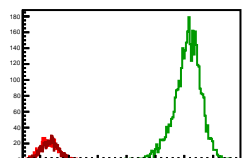
### Cycle 9, Sums

Entries: 832	Entries: 3731	Entries: 810
Mean: 14.8346 ± 0.0103	Mean: 19.3230 ± 0.0059	Mean: 14.5334 ± 0.0099
Std Dev: 0.2958 ± 0.0073	Std Dev: 0.3567 ± 0.0042	Std Dev: 0.2889 ± 0.0070



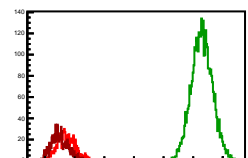
### Cycle 10, Sums

Entries: 829	Entries: 2740	Entries: 856
Mean: 14.3250 ± 0.0099	Mean: 19.1184 ± 0.0074	Mean: 14.3865 ± 0.0095
Std Dev: 0.2883 ± 0.0071	Std Dev: 0.4533 ± 0.0052	Std Dev: 0.2772 ± 0.0071



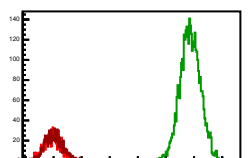
### Cycle 11, Sums

Entries: 821	Entries: 3751	Entries: 832
Mean: 14.7125 ± 0.0105	Mean: 19.2947 ± 0.0058	Mean: 14.4869 ± 0.0102
Std Dev: 0.3088 ± 0.0074	Std Dev: 0.3548 ± 0.0042	Std Dev: 0.2918 ± 0.0072



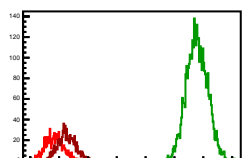
### Cycle 12, Sums

Entries: 868	Entries: 3675	Entries: 848
Mean: 14.3407 ± 0.0098	Mean: 19.8665 ± 0.0059	Mean: 15.8028 ± 0.0108
Std Dev: 0.2898 ± 0.0076	Std Dev: 0.3601 ± 0.0042	Std Dev: 0.3172 ± 0.0077



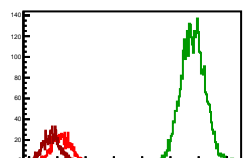
### Cycle 13, Sums

Entries: 837	Entries: 3758	Entries: 797
Mean: 14.8355 ± 0.0108	Mean: 19.7835 ± 0.0059	Mean: 15.2071 ± 0.0109
Std Dev: 0.3124 ± 0.0076	Std Dev: 0.3633 ± 0.0042	Std Dev: 0.3088 ± 0.0077



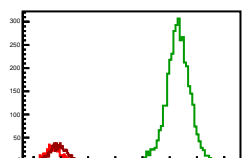
### Cycle 14, Sums

Entries: 813	Entries: 3716	Entries: 841
Mean: 15.1333 ± 0.0107	Mean: 19.7960 ± 0.0067	Mean: 14.7916 ± 0.0099
Std Dev: 0.3058 ± 0.0076	Std Dev: 0.4058 ± 0.0042	Std Dev: 0.2879 ± 0.0070



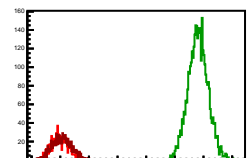
### Cycle 15, Sums

Entries: 836	Entries: 3705	Entries: 911
Mean: 14.7314 ± 0.0099	Mean: 19.3009 ± 0.0073	Mean: 14.2075 ± 0.0100
Std Dev: 0.2829 ± 0.0069	Std Dev: 0.4443 ± 0.0052	Std Dev: 0.3099 ± 0.0070



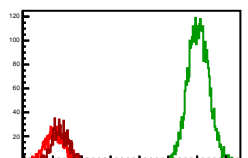
### Cycle 16, Sums

Entries: 808	Entries: 3718	Entries: 880
Mean: 15.1792 ± 0.0104	Mean: 19.3855 ± 0.0057	Mean: 15.0743 ± 0.0115
Std Dev: 0.2924 ± 0.0065	Std Dev: 0.3498 ± 0.0042	Std Dev: 0.3044 ± 0.0081



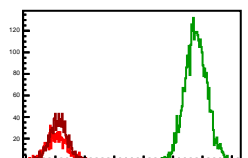
### Cycle 17, Sums

Entries: 869	Entries: 3679	Entries: 812
Mean: 15.0543 ± 0.0106	Mean: 20.0440 ± 0.0058	Mean: 15.8028 ± 0.0099
Std Dev: 0.3090 ± 0.0075	Std Dev: 0.3520 ± 0.0041	Std Dev: 0.2818 ± 0.0070



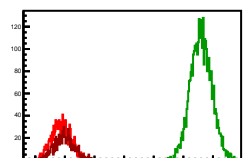
### Cycle 18, Sums

Entries: 822	Entries: 3698	Entries: 1155
Mean: 15.0361 ± 0.0105	Mean: 19.7244 ± 0.0060	Mean: 15.1109 ± 0.0088
Std Dev: 0.3297 ± 0.0081	Std Dev: 0.3644 ± 0.0042	Std Dev: 0.3085 ± 0.0063



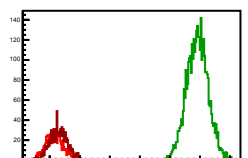
### Cycle 19, Sums

Entries: 1130	Entries: 3709	Entries: 832
Mean: 14.8687 ± 0.0097	Mean: 19.5531 ± 0.0059	Mean: 14.7976 ± 0.0115
Std Dev: 0.3276 ± 0.0089	Std Dev: 0.3564 ± 0.0042	Std Dev: 0.3304 ± 0.0081



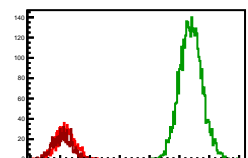
### Cycle 20, Sums

Entries: 843	Entries: 2764	Entries: 946
Mean: 15.1623 ± 0.0102	Mean: 19.9162 ± 0.0059	Mean: 15.2975 ± 0.0098
Std Dev: 0.2961 ± 0.0072	Std Dev: 0.3568 ± 0.0042	Std Dev: 0.3019 ± 0.0069



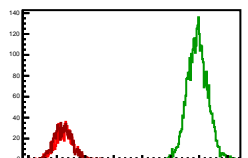
### Cycle 21, Sums

Entries: 825	Entries: 3718	Entries: 836
Mean: 15.1792 ± 0.0104	Mean: 19.3855 ± 0.0060	Mean: 15.0743 ± 0.0108
Std Dev: 0.3163 ± 0.0074	Std Dev: 0.3785 ± 0.0042	Std Dev: 0.3132 ± 0.0077



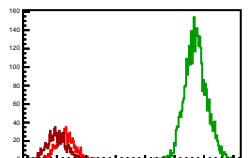
### Cycle 22, Sums

Entries: 841	Entries: 3641	Entries: 815
Mean: 15.2582 ± 0.0106	Mean: 19.9439 ± 0.0058	Mean: 15.2712 ± 0.0110
Std Dev: 0.3077 ± 0.0075	Std Dev: 0.3492 ± 0.0041	Std Dev: 0.3142 ± 0.0073



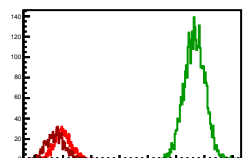
### Cycle 23, Sums

Entries: 830	Entries: 3686	Entries: 933
Mean: 15.0361 ± 0.0105	Mean: 19.7244 ± 0.0060	Mean: 14.9773 ± 0.0103
Std Dev: 0.3098 ± 0.0074	Std Dev: 0.3670 ± 0.0042	Std Dev: 0.3150 ± 0.0073



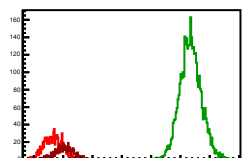
### Cycle 24, Sums

Entries: 913	Entries: 3701	Entries: 864
Mean: 14.9319 ± 0.0097	Mean: 19.6531 ± 0.0060	Mean: 14.7976 ± 0.0107
Std Dev: 0.2946 ± 0.0069	Std Dev: 0.3652 ± 0.0042	Std Dev: 0.3131 ± 0.0075



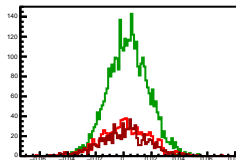
### Cycle 25, Sums

Entries: 888	Entries: 3688	Entries: 512
Mean: 14.6540 ± 0.0108	Mean: 19.3466 ± 0.0060	Mean: 15.0226 ± 0.0138
Std Dev: 0.3185 ± 0.0074	Std Dev: 0.3672 ± 0.0042	Std Dev: 0.3073 ± 0.0096

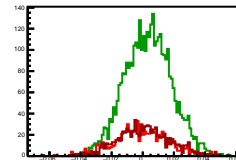


**Cycle 1, Asyms**

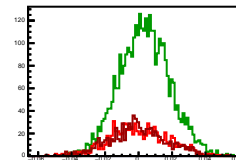
Entries: 824	Entries: 3692	Entries: 828
Mean: -0.0011 ± 0.0006	Mean: 0.0034 ± 0.0002	Mean: 0.0004 ± 0.0006
Std Dev: 0.0189 ± 0.0004	Std Dev: 0.0145 ± 0.0002	Std Dev: 0.0172 ± 0.0004

**Cycle 2, Asyms**

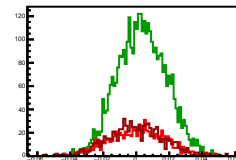
Entries: 842	Entries: 3769	Entries: 822
Mean: -0.0005 ± 0.0006	Mean: 0.0034 ± 0.0002	Mean: 0.0008 ± 0.0006
Std Dev: 0.0174 ± 0.0004	Std Dev: 0.0151 ± 0.0002	Std Dev: 0.0168 ± 0.0004

**Cycle 3, Asyms**

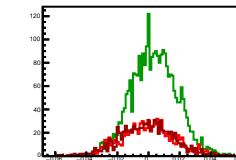
Entries: 834	Entries: 3669	Entries: 812
Mean: 0.0003 ± 0.0006	Mean: 0.0035 ± 0.0002	Mean: -0.0006 ± 0.0006
Std Dev: 0.0174 ± 0.0004	Std Dev: 0.0150 ± 0.0002	Std Dev: 0.0168 ± 0.0004

**Cycle 4, Asyms**

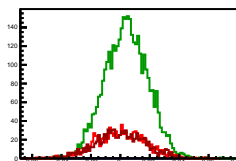
Entries: 832	Entries: 3737	Entries: 808
Mean: 0.0009 ± 0.0006	Mean: 0.0034 ± 0.0002	Mean: -0.0002 ± 0.0006
Std Dev: 0.0170 ± 0.0004	Std Dev: 0.0148 ± 0.0002	Std Dev: 0.0168 ± 0.0004

**Cycle 5, Asyms**

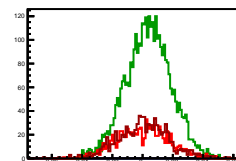
Entries: 825	Entries: 2861	Entries: 877
Mean: -0.0003 ± 0.0006	Mean: 0.0035 ± 0.0002	Mean: -0.0014 ± 0.0006
Std Dev: 0.0169 ± 0.0004	Std Dev: 0.0147 ± 0.0002	Std Dev: 0.0169 ± 0.0004

**Cycle 6, Asyms**

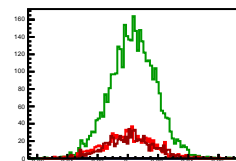
Entries: 804	Entries: 3737	Entries: 850
Mean: -0.0001 ± 0.0006	Mean: 0.0039 ± 0.0002	Mean: 0.0000 ± 0.0006
Std Dev: 0.0176 ± 0.0004	Std Dev: 0.0146 ± 0.0002	Std Dev: 0.0170 ± 0.0004

**Cycle 7, Asyms**

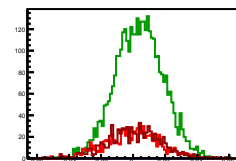
Entries: 873	Entries: 3783	Entries: 838
Mean: -0.0004 ± 0.0006	Mean: 0.0038 ± 0.0002	Mean: 0.0003 ± 0.0006
Std Dev: 0.0171 ± 0.0004	Std Dev: 0.0151 ± 0.0002	Std Dev: 0.0169 ± 0.0004

**Cycle 8, Asyms**

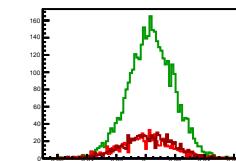
Entries: 843	Entries: 3752	Entries: 821
Mean: 0.0002 ± 0.0006	Mean: 0.0033 ± 0.0002	Mean: 0.0009 ± 0.0006
Std Dev: 0.0161 ± 0.0004	Std Dev: 0.0152 ± 0.0002	Std Dev: 0.0161 ± 0.0004

**Cycle 9, Asyms**

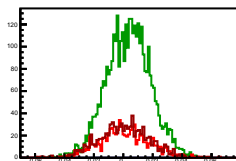
Entries: 832	Entries: 3731	Entries: 810
Mean: -0.0004 ± 0.0006	Mean: 0.0038 ± 0.0002	Mean: 0.0004 ± 0.0006
Std Dev: 0.0172 ± 0.0004	Std Dev: 0.0150 ± 0.0002	Std Dev: 0.0169 ± 0.0004

**Cycle 10, Asyms**

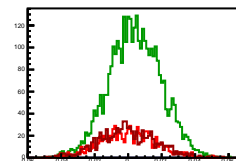
Entries: 829	Entries: 2740	Entries: 856
Mean: -0.0000 ± 0.0006	Mean: 0.0036 ± 0.0002	Mean: 0.0016 ± 0.0006
Std Dev: 0.0175 ± 0.0004	Std Dev: 0.0154 ± 0.0002	Std Dev: 0.0175 ± 0.0004

**Cycle 11, Asyms**

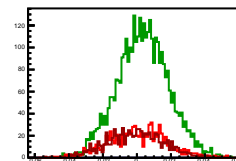
Entries: 821	Entries: 3751	Entries: 822
Mean: 0.0007 ± 0.0006	Mean: 0.0035 ± 0.0002	Mean: 0.0001 ± 0.0006
Std Dev: 0.0176 ± 0.0004	Std Dev: 0.0149 ± 0.0002	Std Dev: 0.0172 ± 0.0004

**Cycle 12, Asyms**

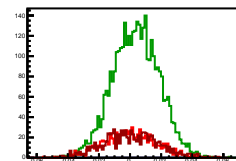
Entries: 868	Entries: 3675	Entries: 848
Mean: 0.0001 ± 0.0006	Mean: 0.0042 ± 0.0002	Mean: -0.0008 ± 0.0006
Std Dev: 0.0168 ± 0.0004	Std Dev: 0.0155 ± 0.0002	Std Dev: 0.0170 ± 0.0004

**Cycle 13, Asyms**

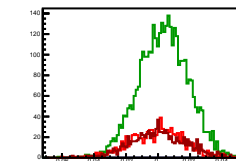
Entries: 827	Entries: 3758	Entries: 797
Mean: 0.0005 ± 0.0006	Mean: 0.0035 ± 0.0002	Mean: -0.0009 ± 0.0006
Std Dev: 0.0172 ± 0.0004	Std Dev: 0.0151 ± 0.0002	Std Dev: 0.0164 ± 0.0004

**Cycle 14, Asyms**

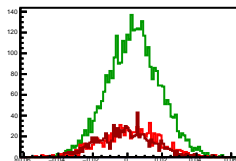
Entries: 813	Entries: 3716	Entries: 841
Mean: 0.0002 ± 0.0006	Mean: 0.0037 ± 0.0002	Mean: 0.0005 ± 0.0006
Std Dev: 0.0167 ± 0.0004	Std Dev: 0.0149 ± 0.0002	Std Dev: 0.0177 ± 0.0004

**Cycle 15, Asyms**

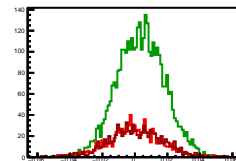
Entries: 836	Entries: 3705	Entries: 811
Mean: -0.0003 ± 0.0006	Mean: 0.0034 ± 0.0002	Mean: -0.0008 ± 0.0006
Std Dev: 0.0171 ± 0.0004	Std Dev: 0.0153 ± 0.0002	Std Dev: 0.0171 ± 0.0004

**Cycle 16, Asyms**

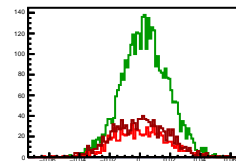
Entries: 830	Entries: 3739	Entries: 880
Mean: -0.0009 ± 0.0006	Mean: 0.0036 ± 0.0002	Mean: -0.0011 ± 0.0006
Std Dev: 0.0171 ± 0.0004	Std Dev: 0.0152 ± 0.0002	Std Dev: 0.0161 ± 0.0004

**Cycle 17, Asyms**

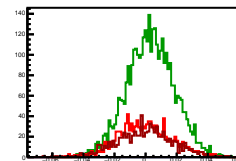
Entries: 849	Entries: 3679	Entries: 812
Mean: -0.0004 ± 0.0006	Mean: 0.0040 ± 0.0002	Mean: -0.0008 ± 0.0006
Std Dev: 0.0165 ± 0.0004	Std Dev: 0.0145 ± 0.0002	Std Dev: 0.0165 ± 0.0004

**Cycle 18, Asyms**

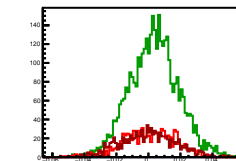
Entries: 822	Entries: 3698	Entries: 1155
Mean: 0.0004 ± 0.0006	Mean: 0.0034 ± 0.0002	Mean: -0.0009 ± 0.0006
Std Dev: 0.0174 ± 0.0004	Std Dev: 0.0153 ± 0.0002	Std Dev: 0.0177 ± 0.0004

**Cycle 19, Asyms**

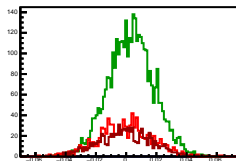
Entries: 1130	Entries: 3709	Entries: 832
Mean: 0.0002 ± 0.0006	Mean: 0.0031 ± 0.0002	Mean: -0.0007 ± 0.0006
Std Dev: 0.0171 ± 0.0004	Std Dev: 0.0153 ± 0.0002	Std Dev: 0.0161 ± 0.0004

**Cycle 20, Asyms**

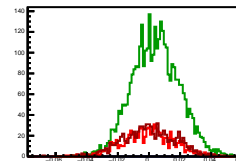
Entries: 843	Entries: 3764	Entries: 946
Mean: -0.0006 ± 0.0006	Mean: 0.0034 ± 0.0002	Mean: -0.0006 ± 0.0006
Std Dev: 0.0167 ± 0.0004	Std Dev: 0.0153 ± 0.0002	Std Dev: 0.0170 ± 0.0004

**Cycle 21, Asyms**

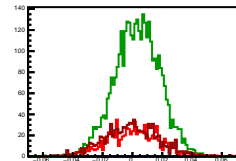
Entries: 825	Entries: 3718	Entries: 836
Mean: -0.0009 ± 0.0006	Mean: 0.0033 ± 0.0002	Mean: -0.0011 ± 0.0006
Std Dev: 0.0173 ± 0.0004	Std Dev: 0.0151 ± 0.0002	Std Dev: 0.0174 ± 0.0004

**Cycle 22, Asyms**

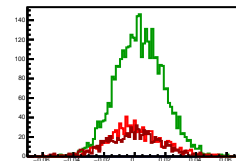
Entries: 841	Entries: 3641	Entries: 815
Mean: -0.0004 ± 0.0006	Mean: 0.0041 ± 0.0002	Mean: 0.0001 ± 0.0006
Std Dev: 0.0162 ± 0.0004	Std Dev: 0.0153 ± 0.0002	Std Dev: 0.0167 ± 0.0004

**Cycle 23, Asyms**

Entries: 820	Entries: 3686	Entries: 833
Mean: 0.0004 ± 0.0006	Mean: 0.0032 ± 0.0002	Mean: -0.0009 ± 0.0006
Std Dev: 0.0173 ± 0.0004	Std Dev: 0.0151 ± 0.0002	Std Dev: 0.0173 ± 0.0004

**Cycle 24, Asyms**

Entries: 813	Entries: 3701	Entries: 864
Mean: 0.0003 ± 0.0006	Mean: 0.0033 ± 0.0002	Mean: -0.0007 ± 0.0006
Std Dev: 0.0173 ± 0.0004	Std Dev: 0.0156 ± 0.0002	Std Dev: 0.0177 ± 0.0004

**Cycle 25, Asyms**

Entries: 888	Entries: 3688	Entries: 552
Mean: 0.0004 ± 0.0006	Mean: 0.0035 ± 0.0002	Mean: -0.0007 ± 0.0006
Std Dev: 0.0167 ± 0.0004	Std Dev: 0.0153 ± 0.0002	Std Dev: 0.0170 ± 0.0004

